

# National Meeting 18<sup>th</sup> February 2021



## Agenda

- Eloise / Response update / MRA results - 10 mins
- Cabo Delgado humanitarian updates - 10mins
- FSC monthly responses update for January 2020 (WFP, FAO, FSC) - 20 mins
- Linha Verde Updates - 15min
- Meet your FSC partner: 5 minutes presentation by FSC members (ActionAid, ADRA, AGRIMERC, Caritas) – 30 min
- AoB (All)-5 mins

# Tropical Depression



Instituto Nacional de Meteorologia  
Direcção de Análise e Previsão de Tempo  
Departamento de Análise e Previsão de Tempo

Maputo, 17 de Fevereiro de 2021

Boletim N°	019/INAM-DAPT/250.2-CT/2020
Emitido:	09:30:00 Horas (Tempo Local)
Valido até:	24:00 Horas do dia 18 de Fevereiro de 2021
Tipo de Comunicado:	<b>Aviso</b>
<b>Fenómeno Meteorológico:</b>	<b>Depressão Tropical</b>
<b>Áreas de risco</b>	<p><b>Chuvas acima de 100 mm/24h, ventos fortes de 80 Km/h e rajadas até 100 Km/h</b> <b>Provincia de Inhambane</b> (distritos de Massinga, Mabote, Govoru, Inhassoro e Vilankulo);</p> <p><b>Chuvas acima de 50 mm/24h, acompanhadas de trovoadas</b> <b>Provincia de Sofala</b> (distritos de Machanga, Buzi, Nhamatanda, Gorongosa, Cheringoma, Marromeu, Maringue, Caia, Muanza, Chibabava, Gorongosa, Chemba e cidades da Beira e Dondo); <b>Provincia de Inhambane</b> (distritos de Zavala, Inharrime, Jangamo, Panda, Homoine, Morrumbene e cidades de Inhambane e Maxixe); <b>Provincia de Manica</b> (distritos de Machazi, Mossurize, Sussundenga, Macate, Vanduzi e cidades de Chimoi e Gondola); <b>Provincia da Zambézia</b> (distritos de Chinde, Luabo, Mopeia, Inhassunge, Maquival, Nicoadala e cidade de Quelimane).</p>

## Participated agencies

WFP  
WHO  
CARE  
Cosaca  
World vision  
FAO  
UNFPA  
OIM  
OXFAM  
Cruz Vermelha  
Save The Children International  
Plan International  
WFP  
UNDP  
OCHA  
UNICEF  
JAM

### **Sofala province**

- Buzi, Beira, Dondo, Nhamatanda, Muanza and Machanga

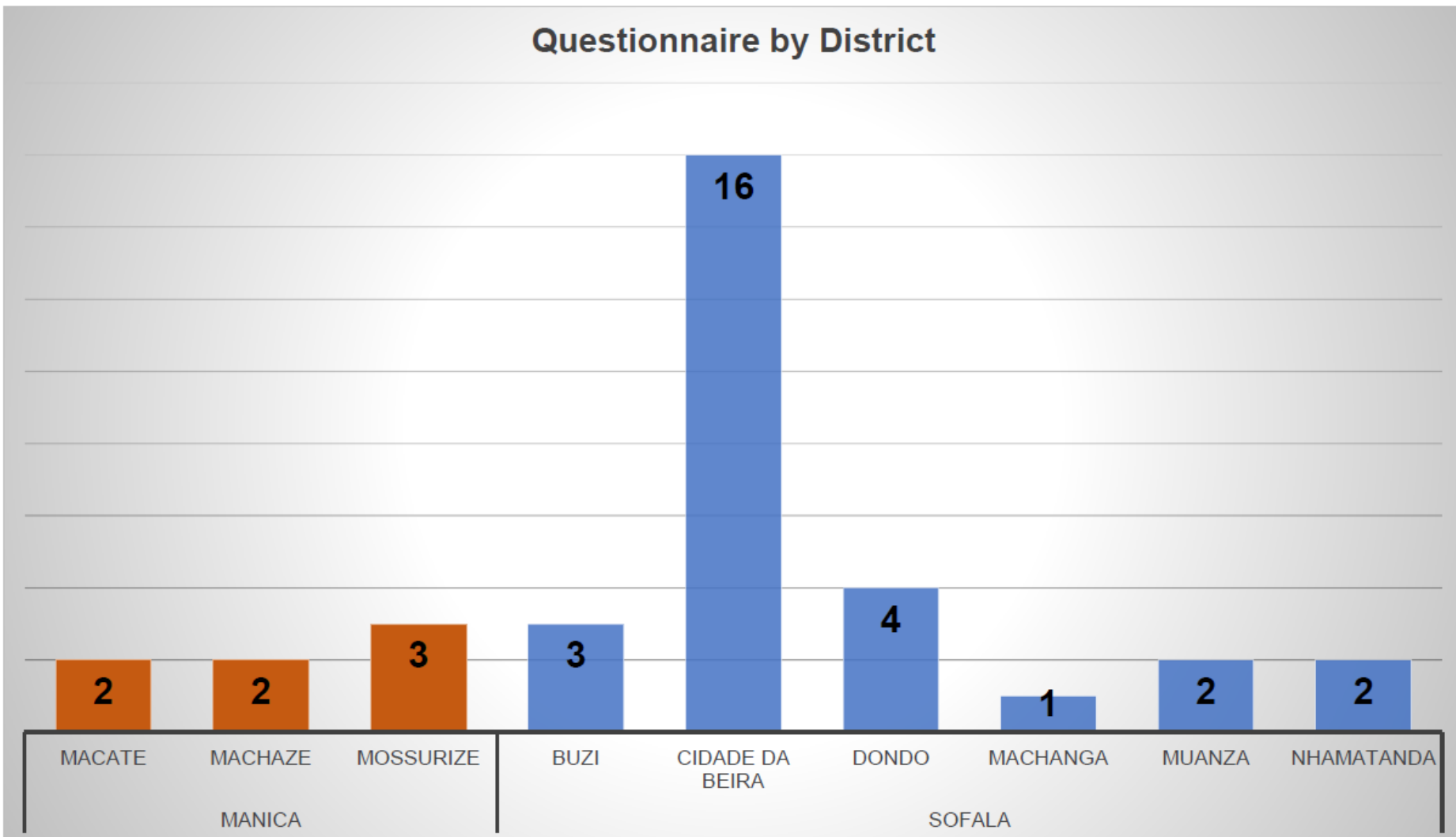
### **Manica province**

- Mossurize, Sussendenga, Macate e Machaze

- Assessment conducted between 25 January - 3 February 2021
- The final assessment report about Sofala, Manica and Zambezia will be shared in the coming few days.

# MRA: FINDINGS

Questionnaire by District



# SOFALA

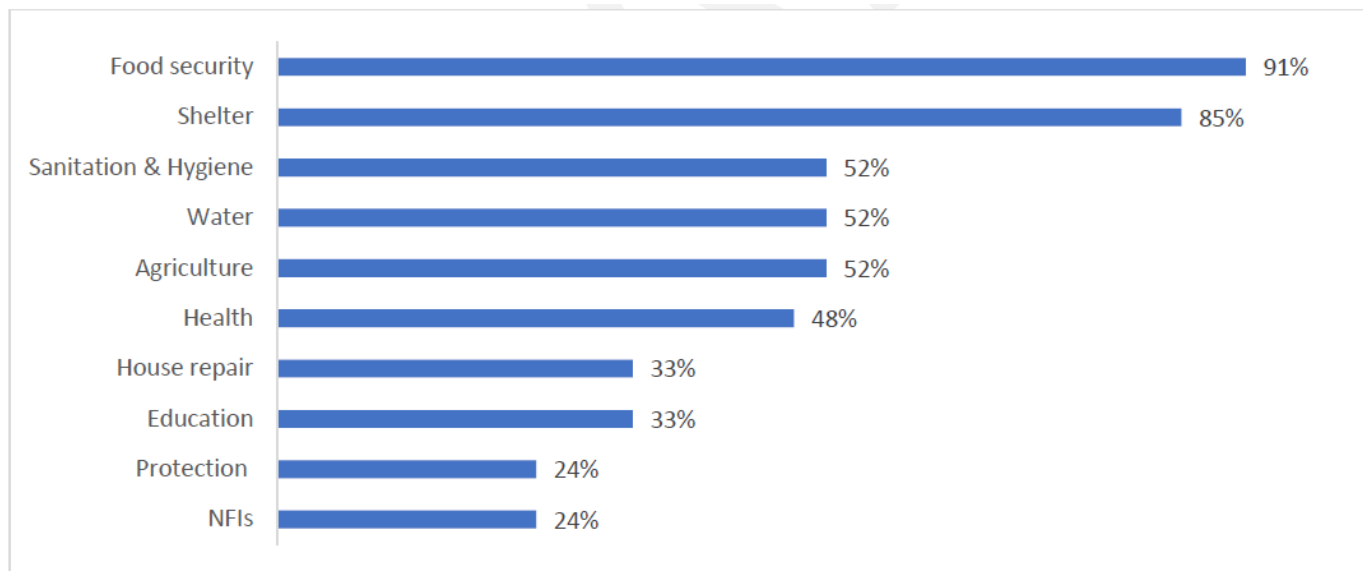
Extra  
questions  
MIRA

- Quais os danos que o ciclone causou na agricultura?
- Quantas familias camponesas perderam as suas machambas?
- Qual a area total (Ha) de machambas com culturas perdidas?
- Quais as culturas perdidas nas machambas?
- Se a familia vive no bairro de reassentamento, qual a condicao da semente distribuida pela FAO nesta campanha agricola?
- Em ordem de importancia, quais as sementes e utensilios que mais necessitam?
- Em ordem de importancia, quais as artes de pesca que mais necessitam?
- Quais as necessidades que mais necessitam para a recuperacao da criacao de animais?

---

Draft report

main priorities  
for assistance  
Cyclone Eloise



**\*\*Final dissemination next week\*\***

# SOFALA

Extra questions MIRA

Preliminary results - Example from Beira city

## Key Government figures



**441,686**  
affected



**11**  
dead



**25**  
injured



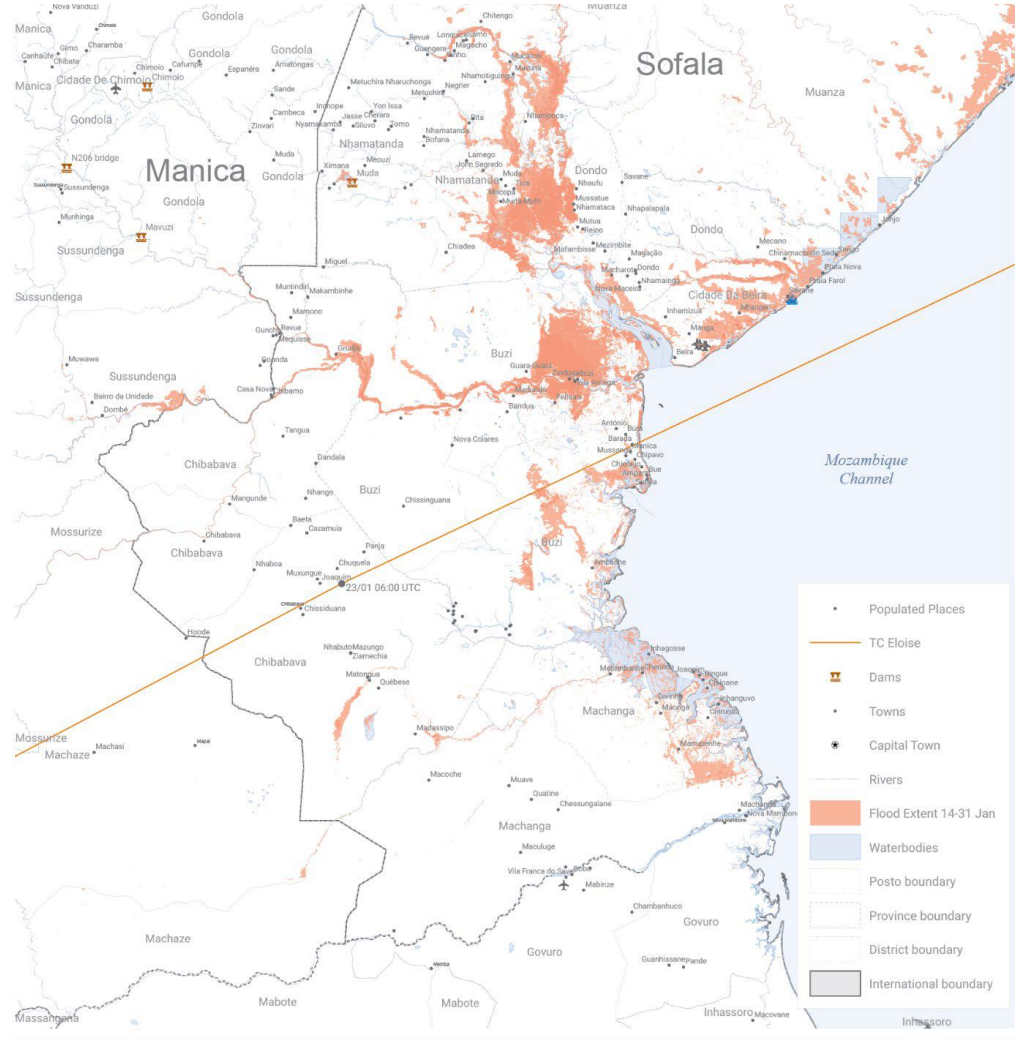
**56,364**  
affected houses



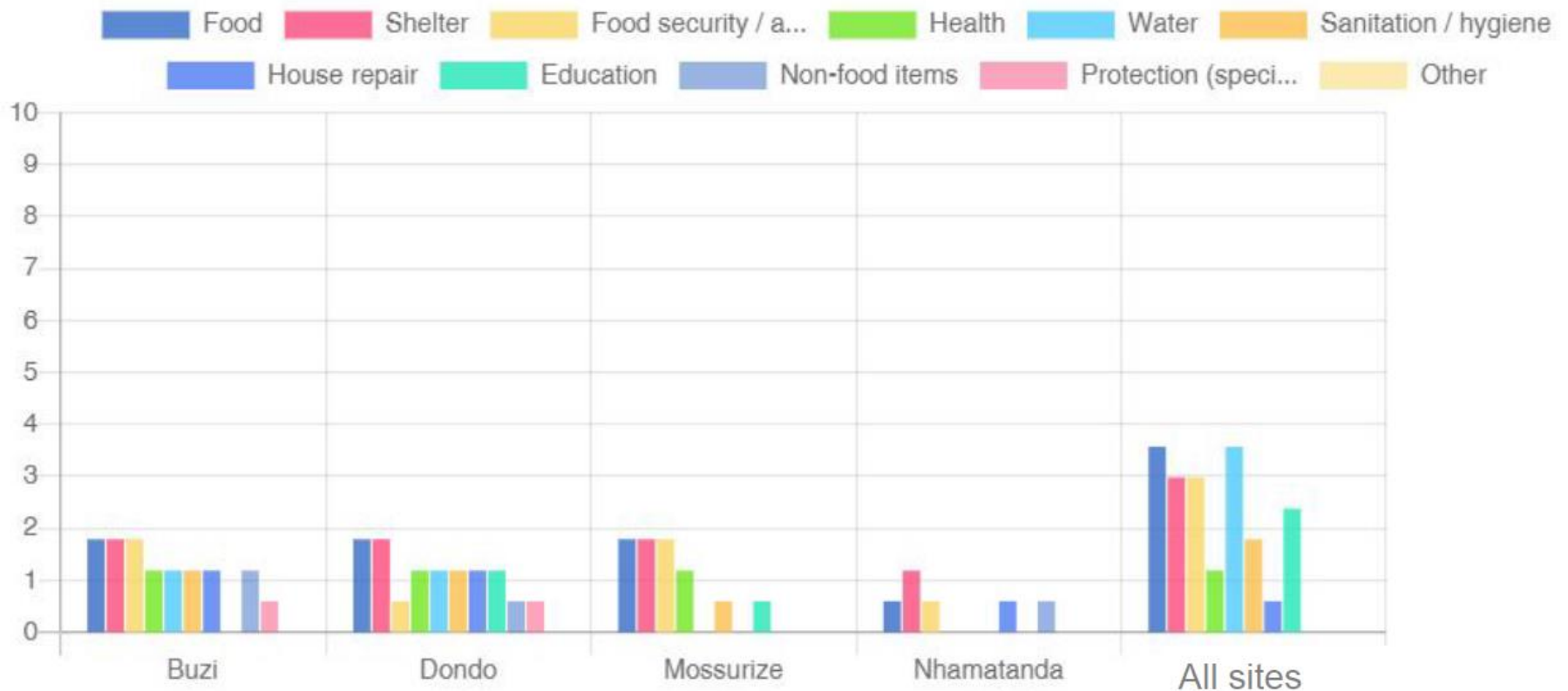
**31**  
sites



**43,327**  
displaced



## Main overall concerns or priorities of the community



## Main concerns or priorities in relation to agriculture and food security

- Priorities for food assistance, agricultural tools and seeds (maize, feijoa nhemba, Boer, horticulture) for second planting season
- Crop loss, lack of food, small irrigation systems, agricultural tools



## Overall comments and observations

- The population will have severe problems in obtaining food shortly because they have lost all of their “Machambas”
- Support in assisting communities in agricultural inputs, fishing.
- Loss of many hectares of cereals in the current agricultural campaign

## PLANS – Plans:



Response Phase	Beneficiaries	Duration
Phase 1 – Immediate response	20,000 beneficiaries	7 days initial response 1 month return packages
Phase 2 – Mid Term Response	150,000 beneficiaries	5 months from March to July 2021
Phase 3	150,000 beneficiaries	TBC



Response Phase	Beneficiaries	Seeds
CERF	3,800 HHs	10 kg Maize 4 kg Beans
Expected	6000 HHs	Same kit
Top-up e-voucher	4000 HHs Sofala / Manica	TBC

## Updates from last week

- **INGD Gaza**

Agriculture and Livestock: 22,836 ha of farmland presumably lost. 1,224 livestock moved; 5,000 ha of pasture flooded.

- **Secretary Permanent**

need for seeds – **PRIORITY**

# National Meeting

## 18<sup>th</sup> February 2021



## Agenda

- Eloise / Response update / MRA results - 10 mins
- **Cabo Delgado humanitarian updates - 10mins**
- FSC monthly responses update for January 2020 (WFP, FAO, FSC) - 20 mins
- Linha Verde Updates - 15min
- Meet your FSC partner: 5 minutes presentation by FSC members (ActionAid, ADRA, AGRIMERC, Caritas) – 30 min
- AoB (All)-5 mins

# Cabo Delgado



- CCCM Cluster Site Update - Northern Mozambique:
- FH is planning to carry out a one-time food distribution, in Nanjua B.
- Namuno Multi-Sectoral Site Assessment:
- CCCM Cluster's Information Desks to be established at the sites
- Rapid Response mission to Mueda
- WB-GoM follow-up mission to Cabo Delgado to take place 18 – 23 February. .

# National Meeting

## 18<sup>th</sup> February 2021



## Agenda

- Eloise / Response update / MRA results - 10 mins
- Cabo Delgado humanitarian updates - 10mins
- **FSC monthly responses update for January 2020 (WFP, FAO, FSC) - 20 mins**
- Linha Verde Updates - 15min
- Meet your FSC partner: 5 minutes presentation by FSC members (ActionAid, ADRA, AGRIMERC, Caritas) – 30 min
- AoB (All)-5 mins



World Food Programme

# Food Assistance Figures update - WFP



SAVING  
LIVES  
CHANGING  
LIVES



World Food Programme

Province		Jan-21			Feb-21		
		Beneficiaries planned	Beneficiaries reached	Achievement rate	Beneficiaries planned	Beneficiaries reached	Achievement rate
Cabo Delgado	IDPs	590,940	287,145	49%	602,875	0	0%
Nampula	Refugees	7,105	7,104	100%	7,105	7,125	100%
	IDPs	60,084	11,490	19%	63,014	56,938	90%
Niassa	IDPs	500	0	0%	500	0	0%
Gaza	LSA	80,850	38,585	48%	80,850	0	0%
Inhambane	LSA	79,600	59,510	75%	79,600	0	0%
Manica	LSA	36,475	31,305	86%	36,475	14,700	40%
Sofala	LSA	148,695	141,800	95%	148,695	50,610	34%
	Eloise	not available	29,840	-	not available	27,595	-
	GTNS	7,500	7,350	98%	7,500	7,350	98%
Tete	LSA	83,500	24,550	29%	83,500	0	0%
	Covid	86,780	0	0%	86,780	0	0%
Zambezia	LSA	20,000	17,605	88%	20,000	17,605	88%
	Covid	136,600	0	0%	136,600	0	0%
Maputo	LSA	20,000	2,095	10%	20,000	0	0%
	Covid	activation upon request	60	-	activation upon request	110	-
<b>Mozambique</b>		<b>1,358,629</b>	<b>658,439</b>	<b>48%</b>	<b>1,373,494</b>	<b>182,033</b>	<b>13%</b>

\*Data as of 19<sup>th</sup> February 2021

SAVING  
LIVES  
CHANGING  
LIVES





## **Figures update - FAO**



**National, MOÇAMBIQUE**  
**FOOD SECURITY CLUSTER**  
*Strengthening Humanitarian Response*

18<sup>th</sup> February 2021

FSC Response update, Period of January 31<sup>st</sup> 2021

# IM Update



## CURRENT EVENT:

- Training on the new 5W Matrix template for the HRP 2021 –
  - Today at 3pm online
- New 5w template circulation: 28<sup>th</sup> February 2021
  - **Deadline for submission: 5<sup>th</sup> of each month**

## FURTHER INFORMATION

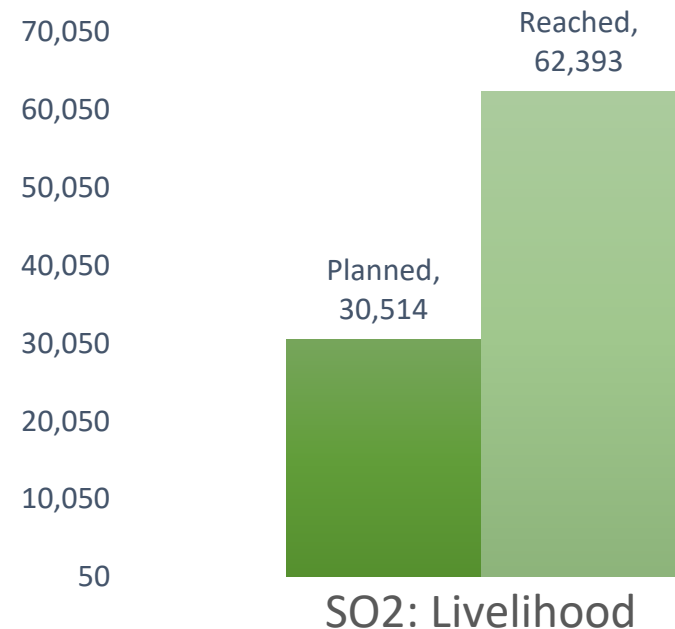
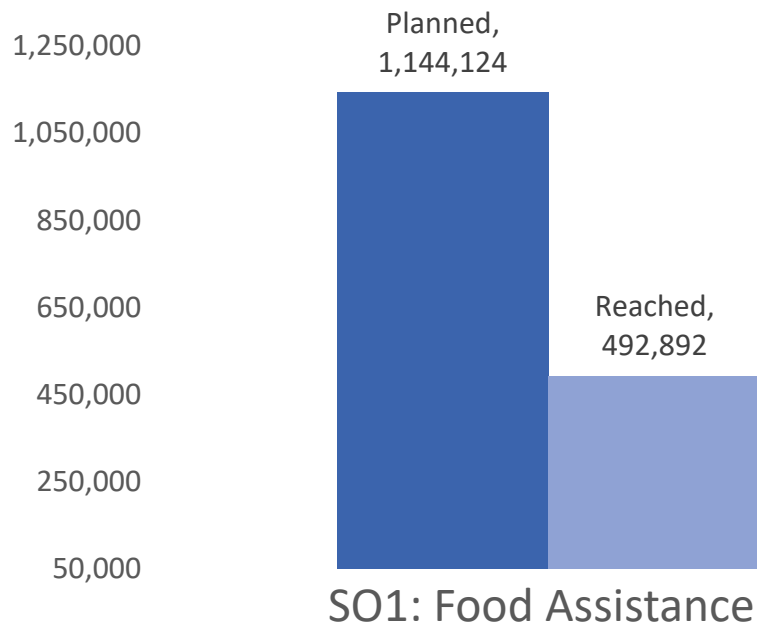
Find more Information about what the cluster is doing in the country on the website:

<https://fscluster.org/mozambique>

Contact: [joao.muianga@wfp.org](mailto:joao.muianga@wfp.org)

According to the chart during the month of January 2020, the activities of the FS partners contributed to both objectives:

- **SO1** - Provision of life-saving food assistance to acutely food insecurity population including displaced population and immediate host communities;
- **SO2** - Support rebuilding of the livelihoods of the affected population in resettlement sites and host communities



## FOOD ASSISTANCE BY ACTIVITY



**492,892**

Total number of people reached in January 2021 by the Food Assistance

### Activity

**04**

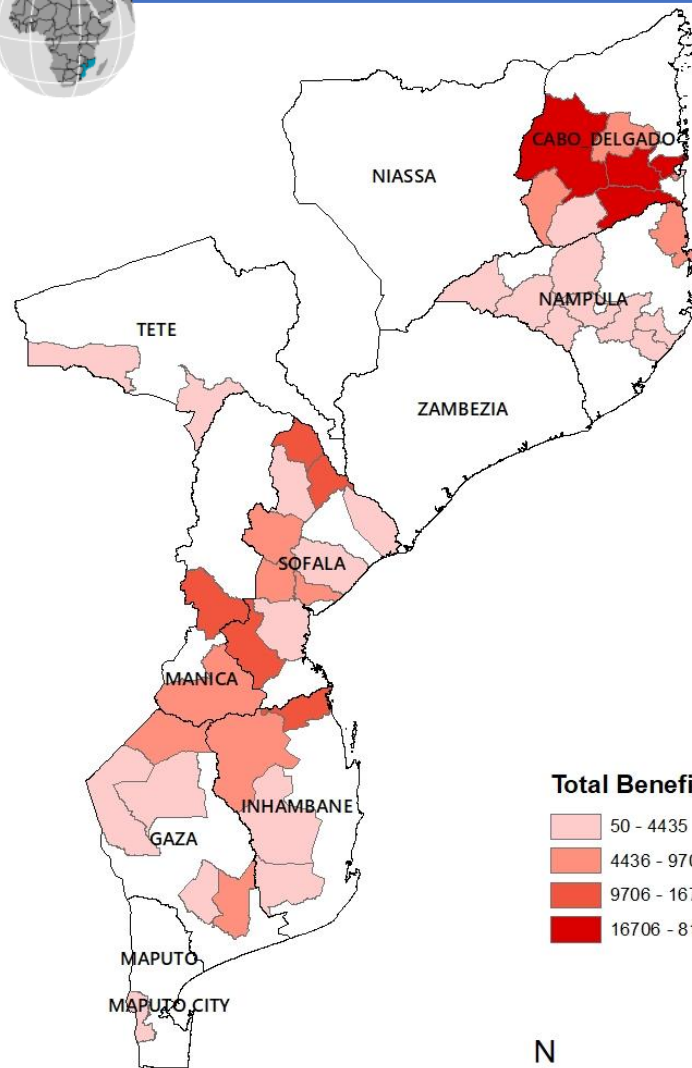


FFA (in Kind)  
FFA (CBT)  
GFD (CBT)  
GFD (In Kind)

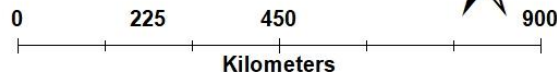
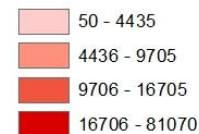
## Assistance by Lead



## FOOD ASSISTANCE MAP



### Total Beneficiaries Reached



## LEAD ORGANIZATION

WFP  
Caritas Pemba  
Iris Global  
CVM  
OIKOS

**05**



## IMPLEMENTING PARTNER

AAM, ADRA, ADRM, ADS, ANDA, ARA, CCM, CEFA, FH, GVC, INGC, JAM, SEPPA, WVI, Young Africa\_M

**15**

## ASSISTANCE BY SHOCK

**03**

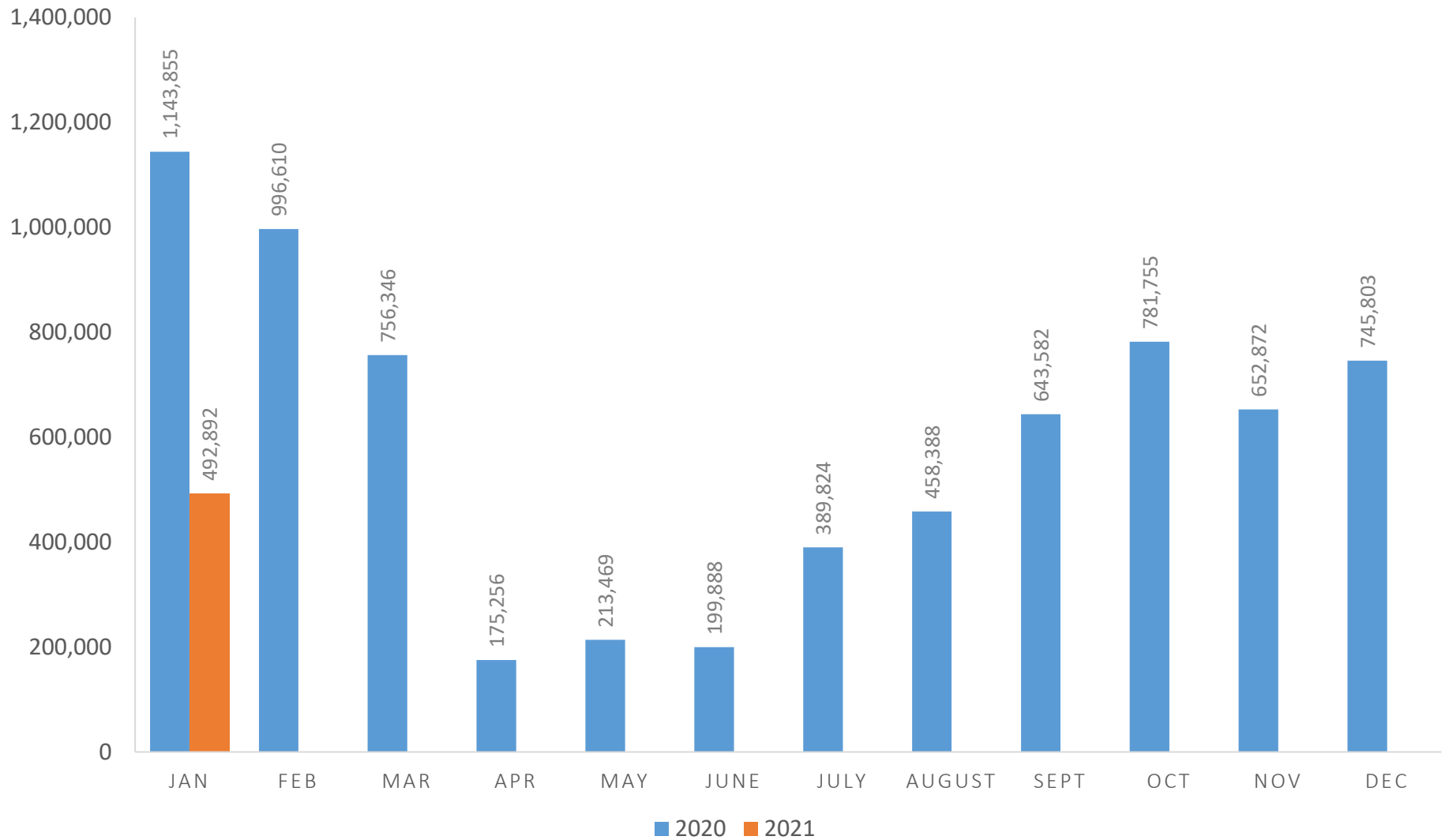
Conflict affected  
COVID  
Lean Season

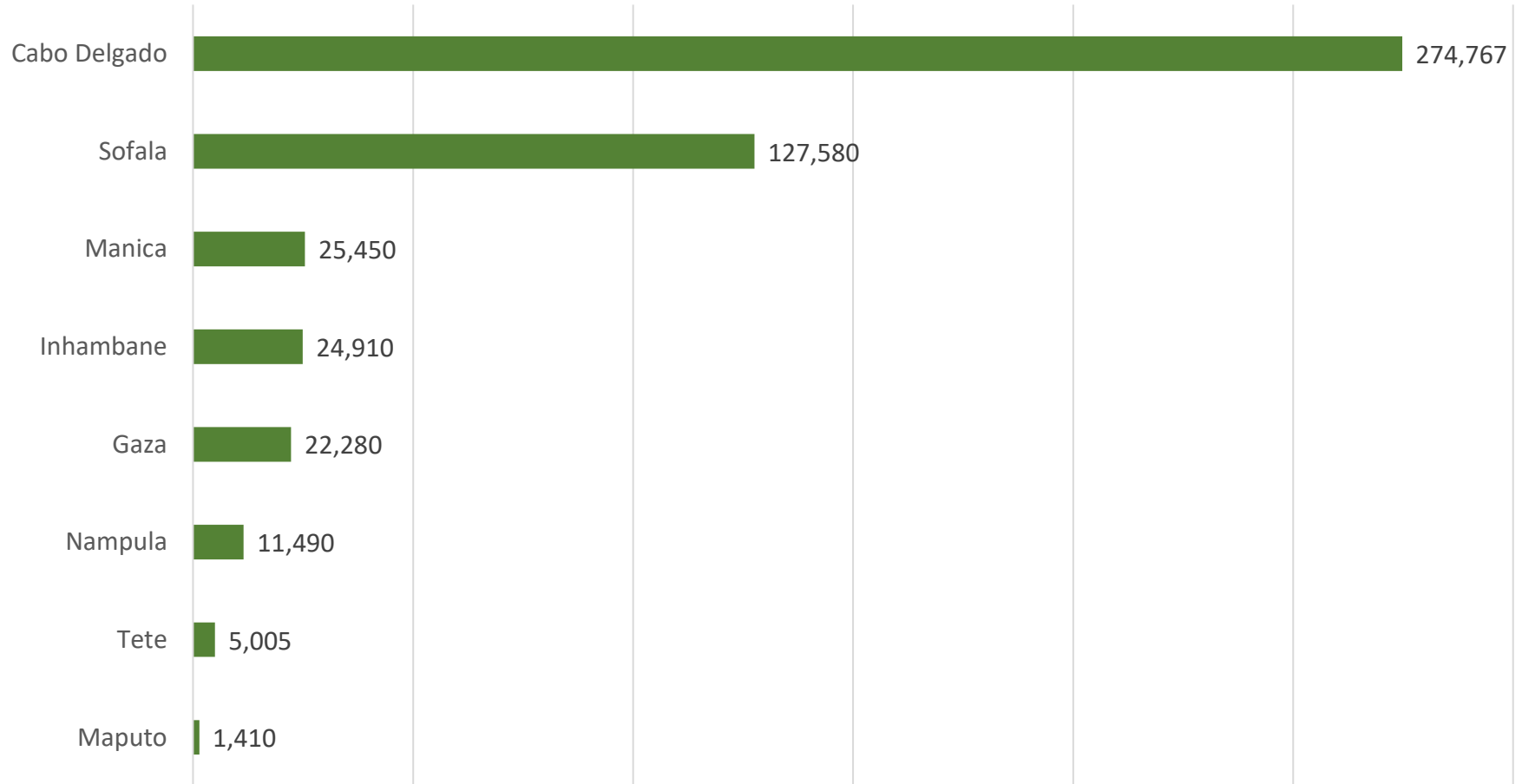


## TOTAL OF DISTRICT REACHED

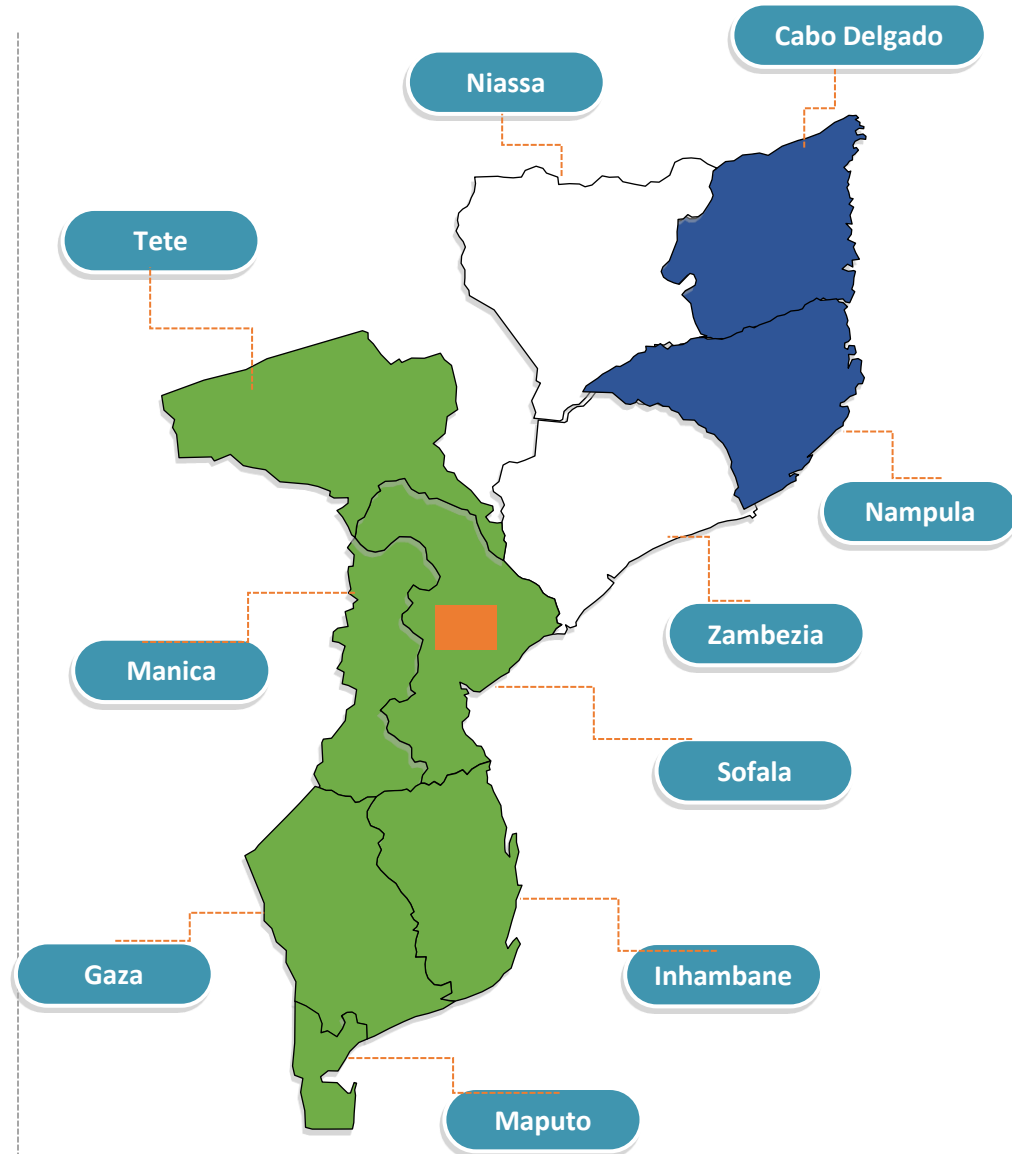
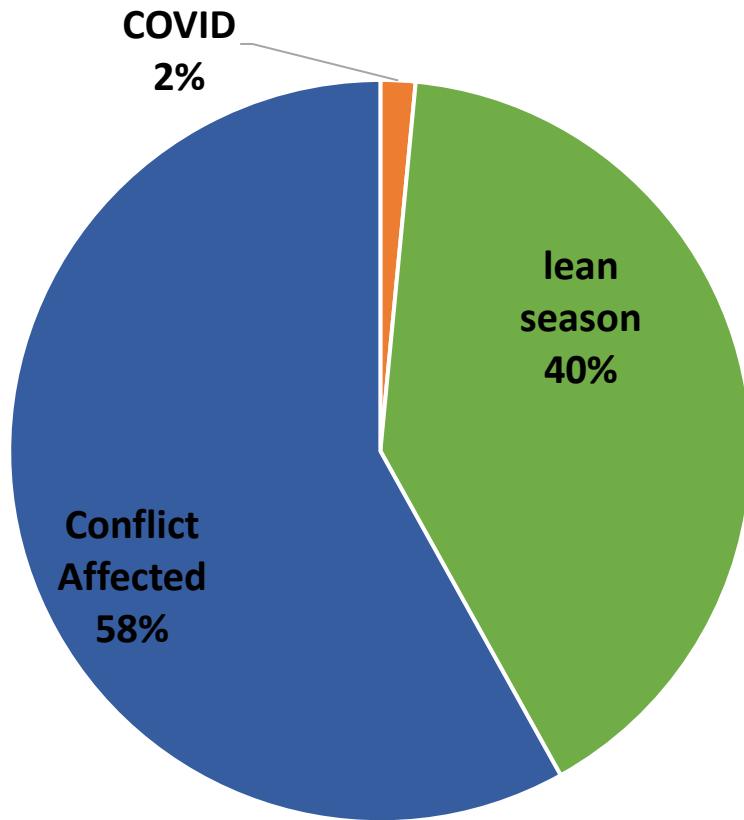
**43** Districts

# Food Assistance: Monthly # Beneficiaries Assisted During Period of January 2020 to January 31<sup>st</sup>, 2021



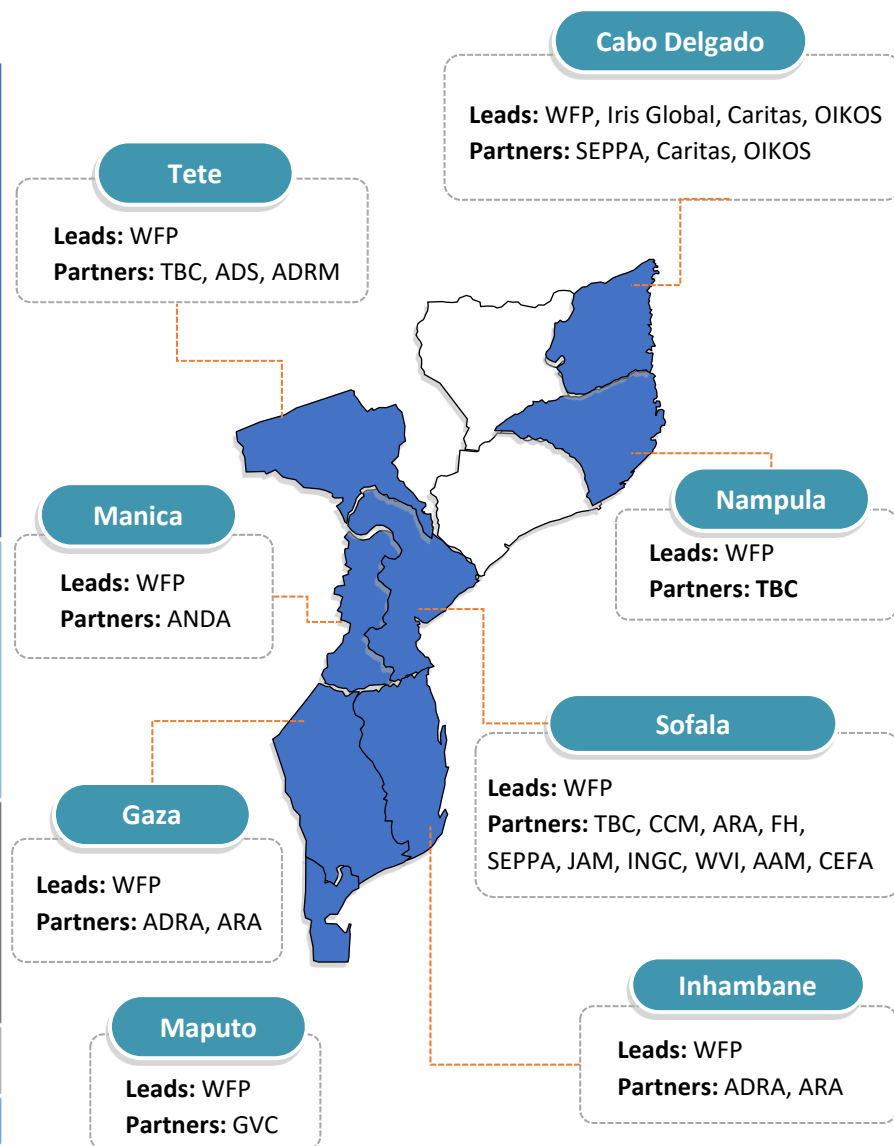
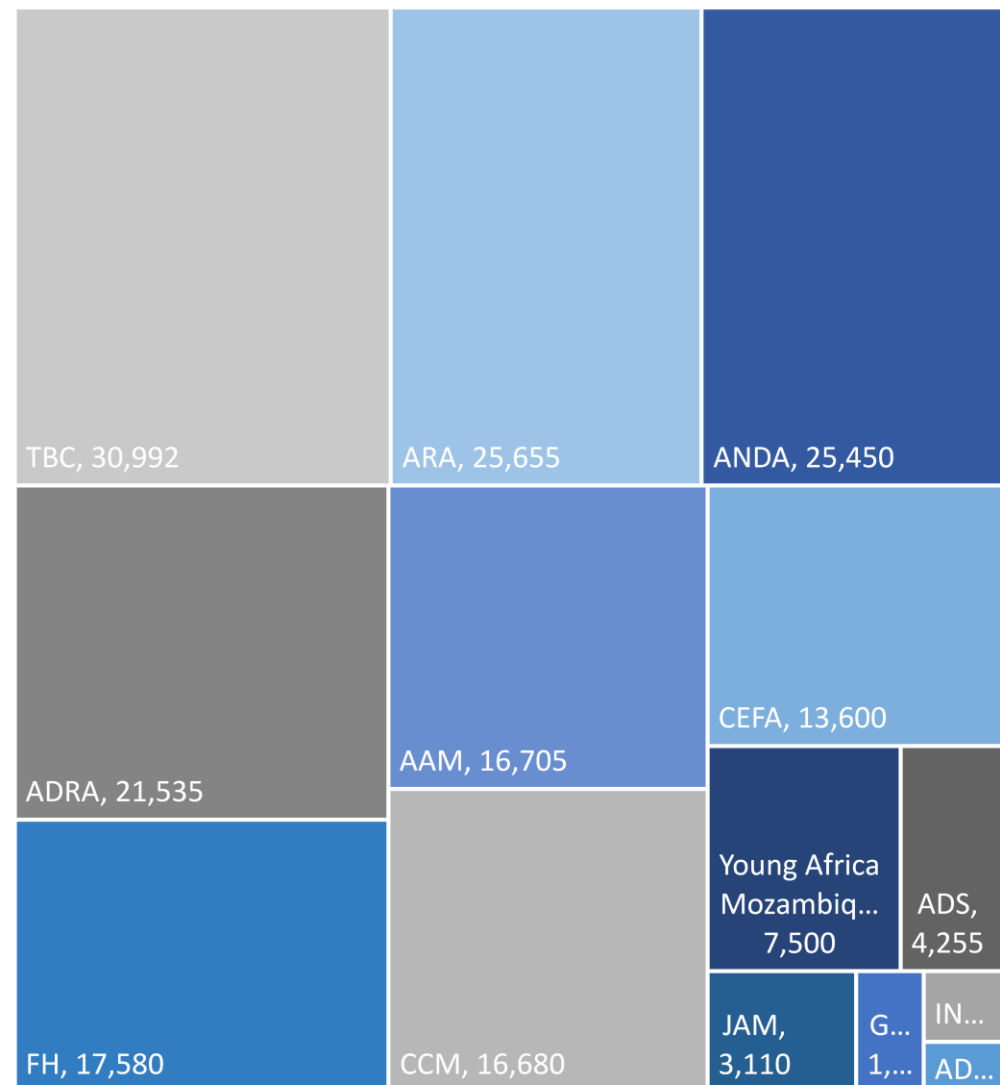


**Total: 492,982**





**Total: 492,892**



## OVERVIEW LIVELIHOOD

**62,393**

Total number of people reached by Livelihood during the month of January 2021



### LIVELIHOOD BY ACTIVITY



**37,964**

Seeds



**2,718**

Seed Kit 1



**16,776**

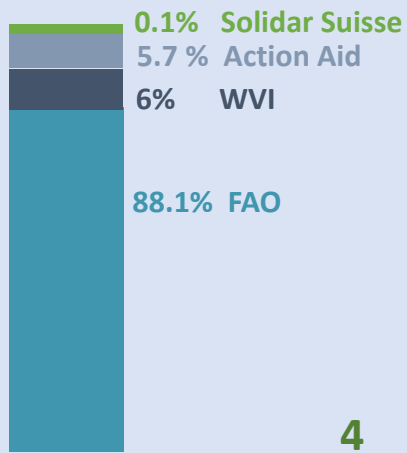
Tools



**4,640**

Training & Capacity Development

### Assistance by Lead



**295**

Distribution Livestock

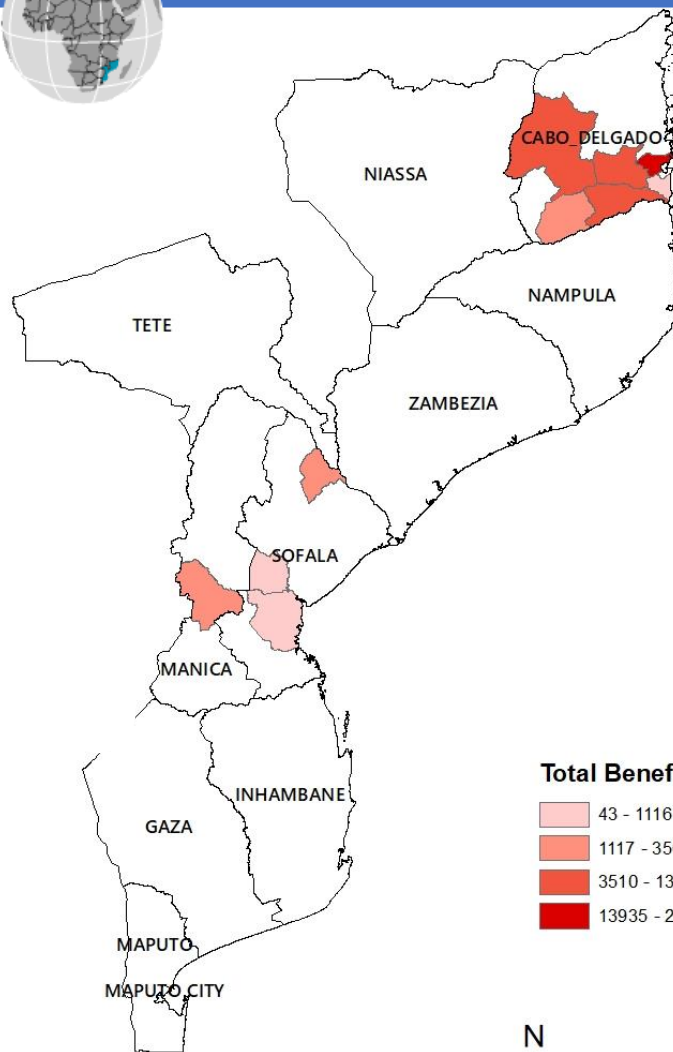
### Shock



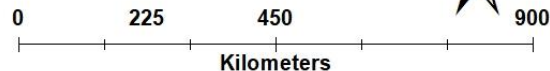
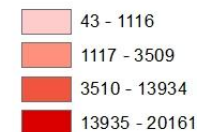
Conflict affected Kenneth IDAI **3**



## LIVELIHOOD MAP



### Total Beneficiaries Reached



### IMPLEMENTING PARTNER

**07**

Caritas, WVI, SDAE Buzi, ADEL\_CD, SDAE, AVSI, KAYEMA

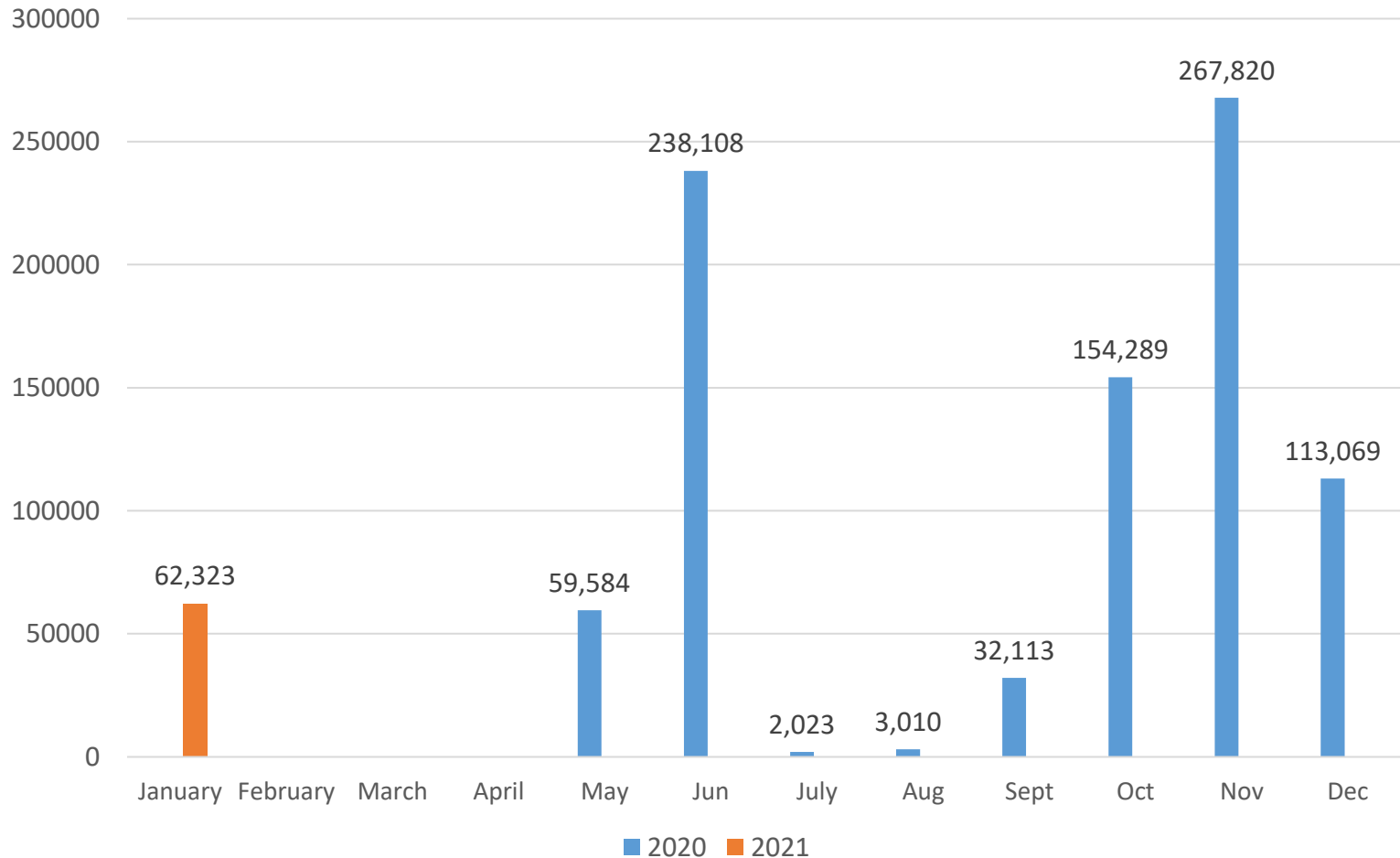
### LEAD ORGANIZATION

**04**

FAO, Solidar Suisse, Action Aid, WVI

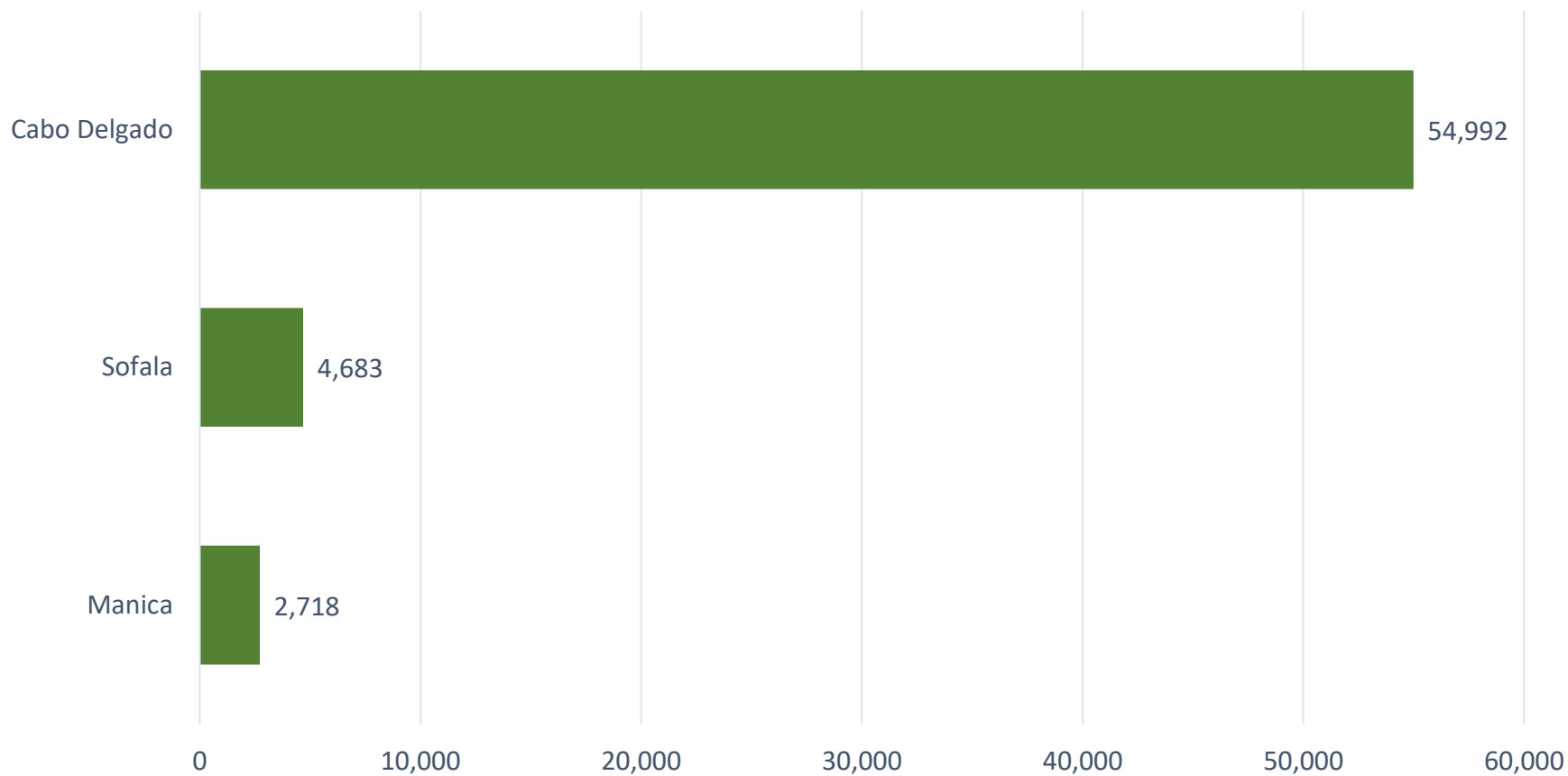


## Beneficiaries Reached



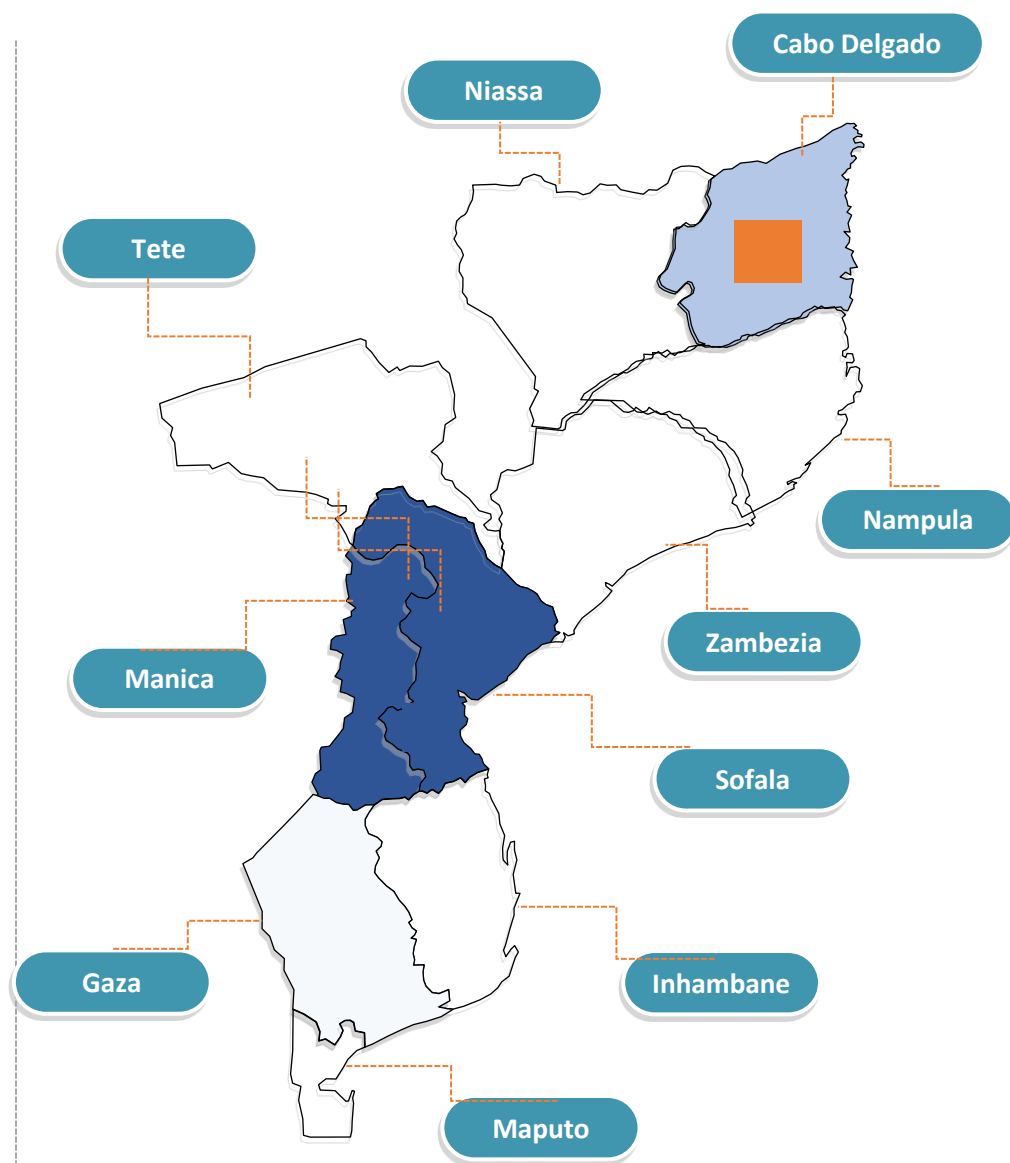
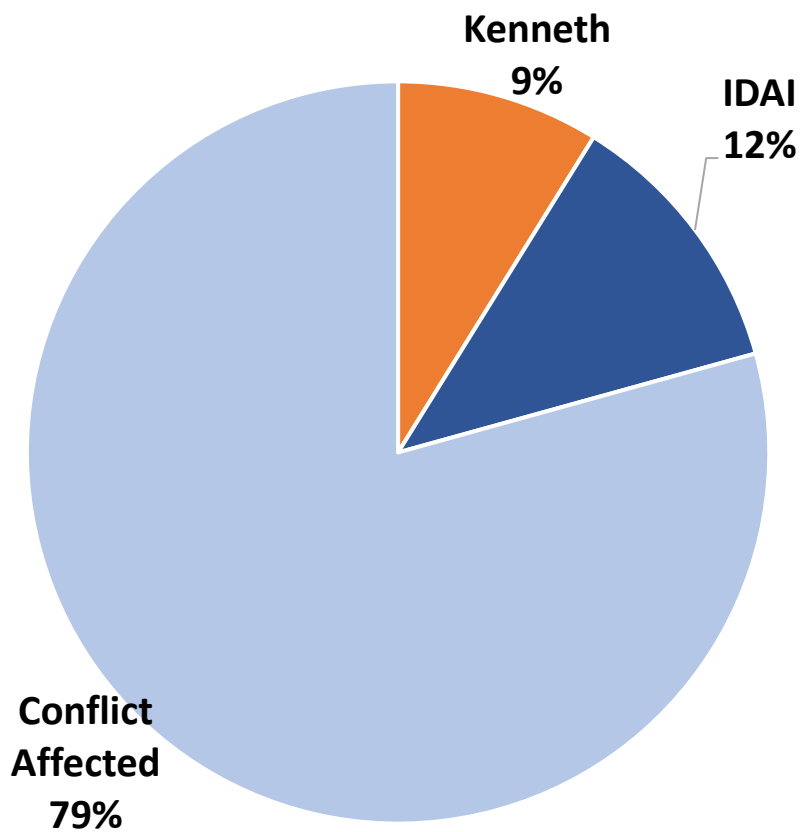


**Total: 62,393**



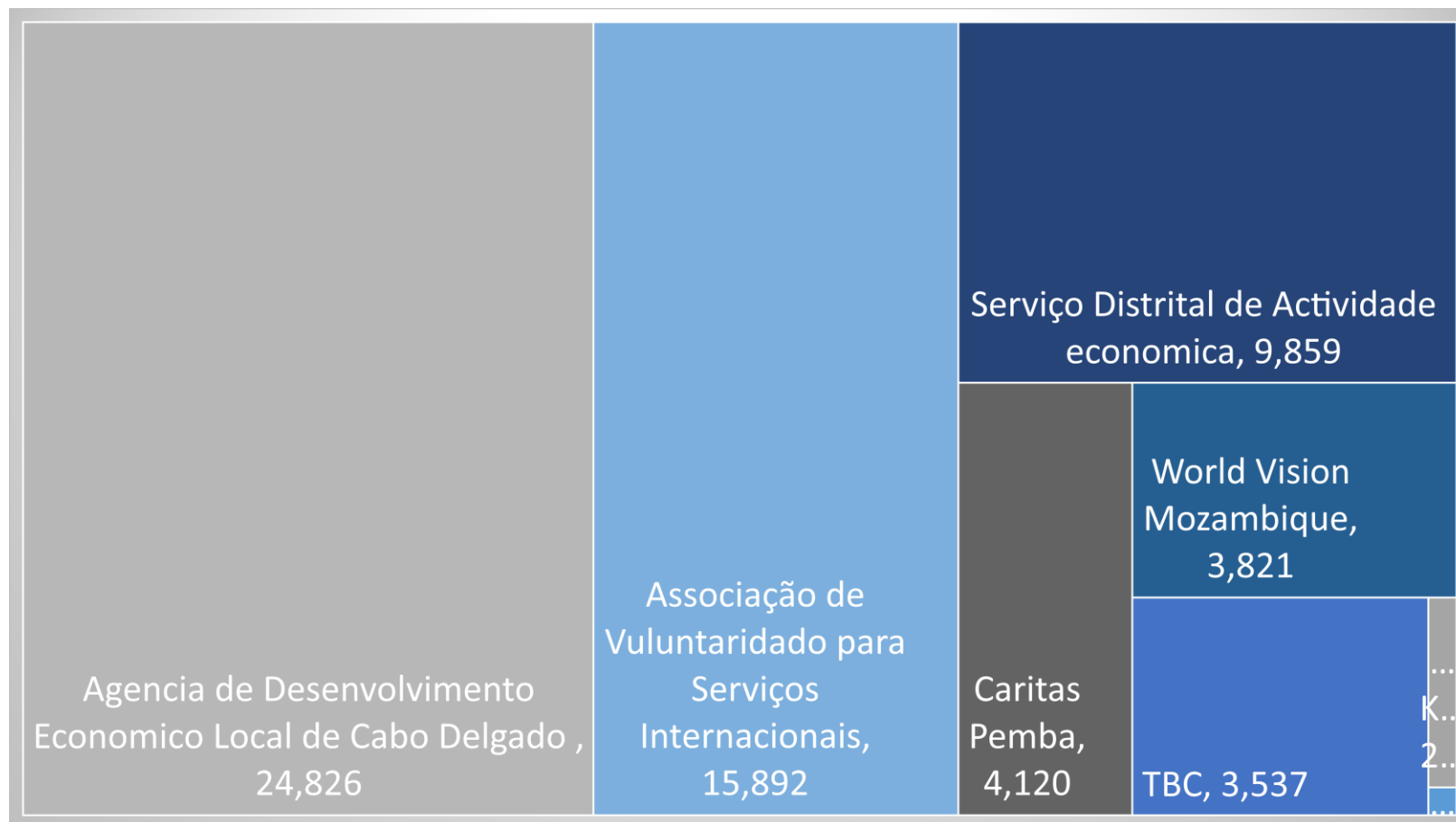


**Total: 62,393**





**Total: 62,393**



# Obrigado pela atenção



# National Meeting 18<sup>th</sup> February 2021



## Agenda

- Eloise / Response update / MRA results - 10 mins
- Cabo Delgado humanitarian updates - 10mins
- FSC monthly responses update for January 2020 (WFP, FAO, FSC) - 20 mins
- **Linha Verde Updates - 15min**
- Meet your FSC partner: 5 minutes presentation by FSC members (ActionAid, ADRA, AGRIMERC, Caritas) – 30 min
- AoB (All)-5 mins





## Inter-Agency Complaints and Feedback Mechanism in Mozambique

*Joint commitments to Accountability to Affected Populations (AAP) and Protection against Sexual Exploitation and Abuse (PSEA)*

February 2021

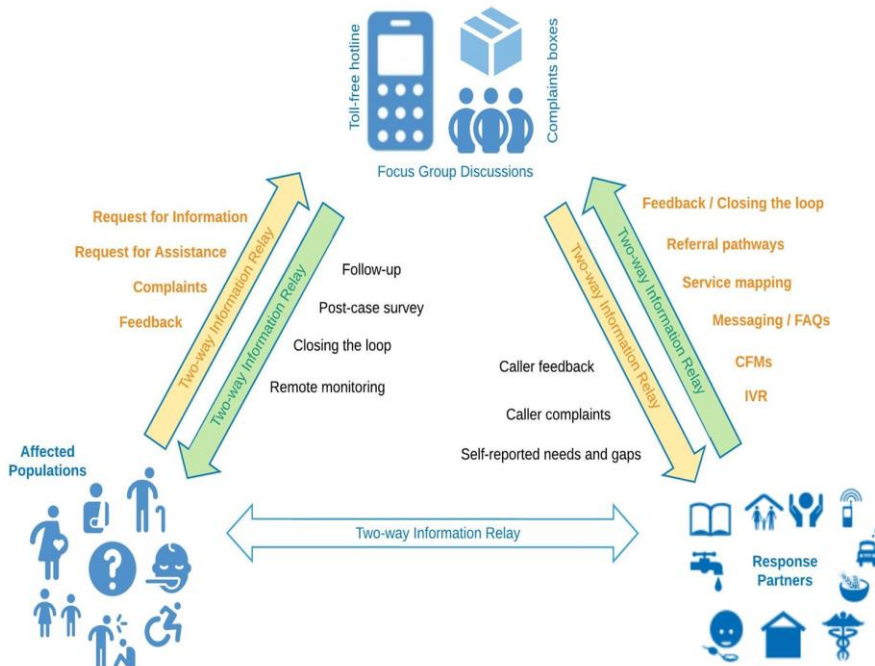
## Linha Verde da Resposta a Emergencia (1458)

- ❖ Launched in May 2019 as a result of IDAI, emanated from the Protection cluster as part of UN wide commitments to Protection, AAP and PSEA.
- ❖ **Is an interagency CFM and is available to clusters and cluster partners.** Organizations working with UN agencies can obtain feedback regarding programs.
- ❖ **National reach:**
  - Scaled-up to cover Cabo Delgado in August 2019
  - Further scaled up to cover drought affected areas in the south from November 2019
- ❖ Operates from 6am to 9pm. 6 agents per shift. **14 languages of communication. Always 50% women per shift.**
- ❖ Monthly dashboards intended to highlight gaps and challenges to facilitate joint decision-making by humanitarian coordination

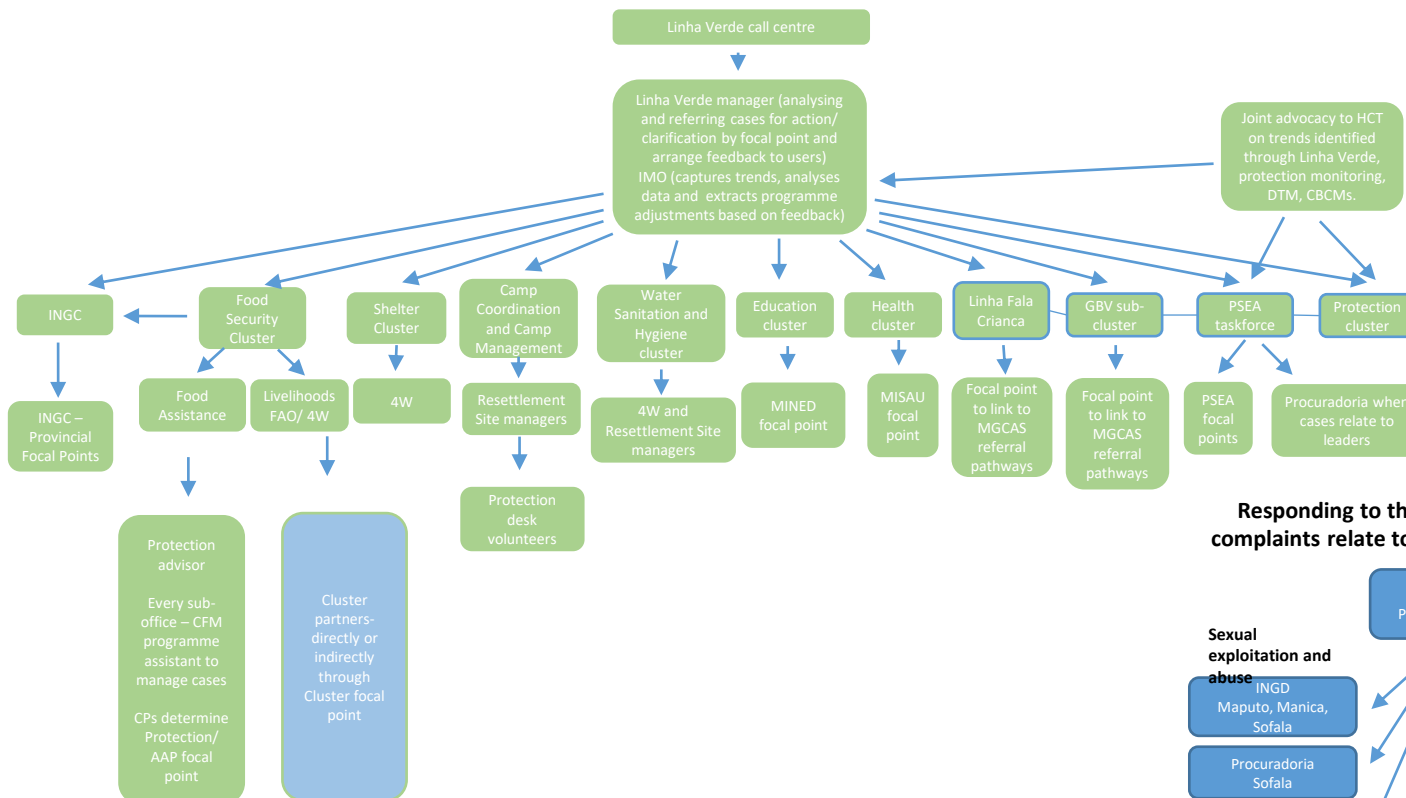


# Linha Verde da Resposta a Emergência (1458)

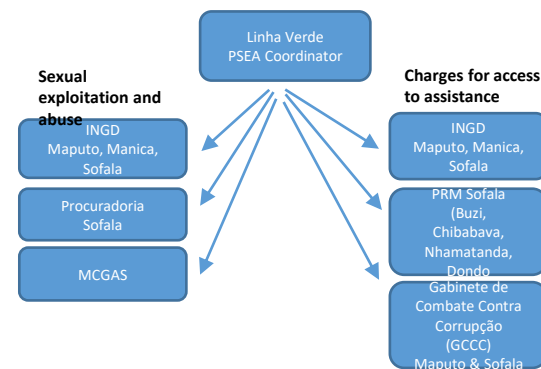
- ❖ Two-way information relay mechanism for the humanitarian response: cyclones, drought, IDP, Covid-19



## Humanitarian actors



## Responding to the fact that the majority of complaints relate to abuses of power by leaders



## Case handling:

- ❖ Linha Verde 1458 is only as good as the information provided by humanitarian partners.
- ❖ Upon registering any case Linha Verde 1458 obtains consent to capture case details and to refer cases (with or without personal details) for action by partners.
  1. **First case resolution:** [not referred] clarification is provided to callers on the call, removing doubt and opportunity for rumours or misunderstanding and managing expectations.
  2. **Referral to sector focal points** for clarification or action. Humanitarian partners are responsible for addressing all cases and sharing a final update on actions taken for feedback loop closure by Linha Verde 1458
  3. Linha Verde 1458 proposes the following referral timelines:



Case Type	Time	Role and responsibility	
		Linha Verde	Referral Focal Point (cluster, partner)
Urgent	24 hours	to share the case with the relevant focal point	to acknowledge case and provide update* to Linha Verde
Urgent	24 hours	to relay update to the CFM User / close the loop	
Non-urgent	7 days	to share the case with the relevant focal point	to acknowledge case and provide update* to Linha Verde
Non-urgent	7 days	to relay update to the CFM User / close the loop	

*Note: An update does not automatically indicate a resolution of a case, but ensures that Linha Verde is aware that action is being taken.*

# What does feedback mean?/Loop closure

- ❖ Inform the caller/ beneficiary that the organisation has been notified of the issue and is taking steps to resolve it or put mechanisms in place to prevent it from happening again.
  - (Humanitarian organisations have to verify the facts of the cases and use established internal measures to resolve issues and improve programming.
  
- ❖ Where the humanitarian organisation cannot take action against perpetrator in cases of abuses of power/PSEA.
  - Linha Verde 1458 informs caller regarding the role of the humanitarian organisation and local authorities who are in charge of taking action against local leadership
  - Linha Verde 1458 informs caller the case has been referred to local authorities/encourage people to report to GPCC.



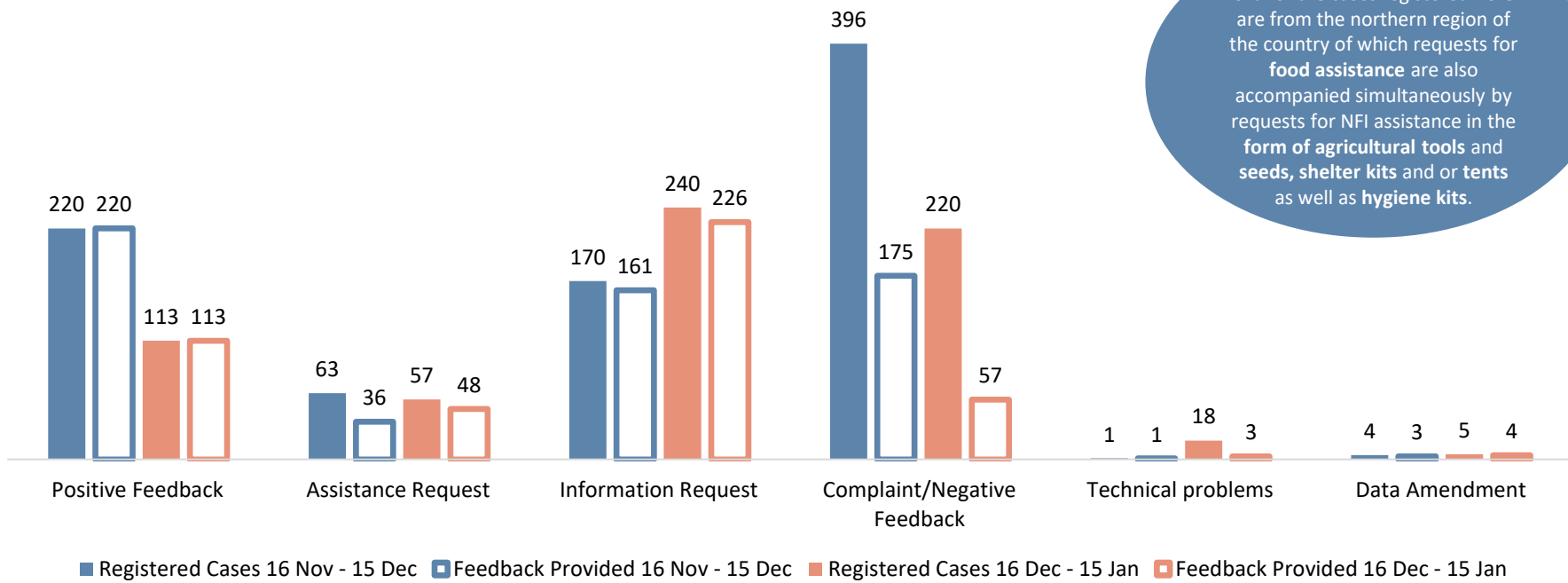
Sofala	99
Zambezia	5
Manica	22
Tete	22
Nampula	26
Cabo Delgado	405
Inhambane	40
Gaza	29
Maputo Provincia	5

## FOOD SECURITY



16 Dec 2020 - 15 Jan 2021  
 Cases Registered:  
**653**  
 Feedback Provided:  
**451**

16 Dec 2020 - 15 Jan 2021  
 64% of the cases registered here are from the northern region of the country of which requests for **food assistance** are also accompanied simultaneously by requests for NFI assistance in the form of **agricultural tools and seeds, shelter kits and or tents** as well as **hygiene kits**.



# Highlights: Food Security Cluster

## ❖ Central and Southern Region:

- Exclusion error claims in resettlement sites persist despite verification exercise that took place 4 months ago
- Claims that monetary values are being charged by local leadership for assistance
- Assistance requests from people affected by Tropical storm ELOISE and the consequent flooding in Gaza
- Linha Verde 1458 provided support in dissemination of early warning SMS's for tropical storm Eloise and consequent flooding in Gaza

## Considerations:

1. there has been indication that these claims can be associated to other humanitarian food assistance programs in resettlement sites
2. Take caution and try to avoid leaving distribution activities/ management of lists fully in the hands of local leadership
3. Linha Verde 1458 can forward claims to CFM focal points in partner organisation for resolution of cases
4. Partners can provide programme info for first case resolution





# Highlights: Food Security Cluster

## ❖ Northern region:

- WFP and other humanitarian partners continue to face problems regarding IDP registration lists, IDP's continue to claim to be excluded from beneficiary lists despite having been registered by local leaders
- Claims that members of host communities are receiving assistance in place of IDP's due to affiliation with local leadership
- Large number of requests for information regarding distribution dates due to delays and cancellations, distributions resumed throughout the month of January 2021



## Considerations:

- 1. Partners can explore opportunities for joint action for common issues raised**
2. Cases can be shared with CFM focal points of cluster partners to facilitate feedback provision, directly or indirectly through cluster focal point.
3. Partners can share information regarding interventions to facilitate sharing of information by Linha Verde 1458, Linha Verde 1458 needs to reiterate CWC messages for reinforcement

# Communications



Para reportar abusos na ajuda humanitária,  
ligue para a **Linha Verde 1458**  
**Não se paga a chamada**

**1458**  
LINHA VERDE  
DA RESPOSTA À EMERGÊNCIA



**LINHA VERDE**  
DA RESPOSTA À EMERGÊNCIA

Se precisar de **INFORMAÇÃO**  
**OU** tiver alguma **PREOCUPAÇÃO**  
sobre as intervenções da resposta  
humanitária na sua zona

Ligue para este número gratuito:

 **1458**



A ajuda humanitária é gratuita

Thank you!

Questions?



**LINHA VERDE**

DA RESPOSTA A EMERGÊNCIA

# National Meeting 18<sup>th</sup> February 2021



## Agenda

- Eloise / Response update / MRA results - 10 mins
- Cabo Delgado humanitarian updates - 10mins
- FSC monthly responses update for January 2020 (WFP, FAO, FSC) - 20 mins
- Linha Verde Updates - 15min
- **Meet your FSC partner: 5 minutes presentation by FSC members (ActionAid, ADRA, AGRIMERC, Caritas) – 30 min**
- AoB (All)-5 mins

**Segurança Alimentar e meios de subsistencia em Sofala- no Ambito da resposta humanitaria, de ciclone IDAI e Cheias nos distritos de Buzi, Nhamatanda e Caia.**

**Aos, 18 de Fevereiro de 2021**

# 1.0 Introdução

AAMoz é uma organização nacional não governamental de combate a pobreza, operando em Moçambique desde 1988 nas províncias de Cabo Delgado, Zambezia, Nampula, Inhambane, Gaza, Maputo e Sofala.

O objectivo principal de AAMoz prioridades estratégicas:

Direito a Educação e ambiente sem violencia

Direito a justiça e a colecta dos recurso e a Governação democratica.

# 1.1 Contextualização

A actionaid iniciou a implementação de programa de segurança alimentar na provincia de Sofala em 2019 apois o ciclone IDAI e cheias.

Distritos de intervencao no ambito de emergencia na  
seguranca Alimentar:

Nhamatanda,

Buzi

Caia.

## **Para esta campanha agraria 2020/2021 contamos com os seguintes doadores:**

- DRPF,
- PPL,
- START FUND
- WFP.



## 2.0 Objectivos

### **Objectivo Geral**

- Apoiar as famílias mais vulneráveis afectadas pelo ciclone IDAI.

### **Objectivo Especifico**

- Aumentar a produção e sua comercialização;
- Garantir produção das hortícolas durante toda época do ano;
- Garantir a retoma segura das crianças nas escolas.

## 3.0 Distrito de implementação dos projectos

(Buzi e Nhamatanda) - DEC, DRPF e PPL.

Nhamatanda – Start Fund

Caia - WFP

Nr. Total dos Beneficiarios: 11.890

**Orçamento global implementação das actividades:**

**\$261. 324,33**

### **3.1. No âmbito de distribuição de insumos agrícolas e instrumento em Buzi e Nhamatanda(o kit e composto por):**

- 5 kg de semente de milho
- 10 gr de semente de Hortícolas
- 1 enxada por família.

# Fotos no ambito de kits em Nhamatanda e Buzi- DEC



Cont.



# Conti.



**Cont.**



## **4.0 Distribuição no posto administrativo Metuchira e Nhamatanda sede**

***Feijoes: 5kg***

***Hortícolas: 10gr ( Alface, tomate)***

**Instrumentos: 1 enxada**



# Fotos no ambito de distribuicao de insumos em Nhamatanda- Start Fund



## 5.0 Sementeira nos campos de demonstração em Caia.



Cont.



## 6.0 No ambito do treinamento Projecto PPL ( Buzi e Nhamatanda)



Conti.



## 7.0 Actividades planejadas Distrito de Nhamatanda e Buzi-DRPF

- Construção de sombrites para a produção das hortícolas;
- Distribuição de equipamento de irrigação por gravidade;
- Treinamento de mulheres produtoras em melhoria da dieta alimentar ( Nutrição).

## **8.0 Actividades planejadas Postos**

**Administrativo: Murraça, Marra, Ndoro e Sena.**

**Campos de demonstracao (CDR): 50 campos**

**Nr. De beneficiario: 3400 beneficiarios**

➤ **Sistema de rega gota a gota:**

➤ **Area por cada sistema: 1.5 hectares**

➤ **Nr. De beneficiario: 259**

## 9.0 Constragimentos

- Efeito da pandemia de Covi-19
- Vias de acesso intrasitavel
- Muita queda pluviometrica



**act!onaid**

Obrigado!!!

Beira, aos 18 de Fevereiro de 2021



# Partnership for Inclusive Agricultural Transformation in Africa (PIATA)



BILL & MELINDA  
GATES foundation



# Projecto: Pós Idai e Post Kennedy - Reconstuindo os sistemas alimentares nas provincias de Sofala e Cabo Delgado

- ▶ Financiador: GAIN
- ▶ Implementador: AGRA
  - ▶ Subcontratado: AGRIMERC ODS
- ▶ Data de inicio do Projecto: Dezembro de 2019
- ▶ Data do Fim do Projecto: Fevereiro 28,2021

# Introdução

## Objectivos

- Aumentar acesso a insumos pelos produtores nos distritos alvo;
- Aumentar produção e produtividade das culturas de milho e soja pelos produtores afectados nos distritos alvo;

## Estratégia de implementação

- Treinamento de VBAs e provisão de assistência técnica aos produtores
- Estabelecimento de um Sistema sustentável de acesso a insumos por meio de VBAs, agro-dealers e estabelecimento de mercados de produto

Pos Idai e Kennedy -  
Reconstruindo Sistemas  
alimentares nas províncias  
de Sofala e Cabo Delegado

## Cobertura geográfica

### Buzi (Agrimerç)

### Estaquinha

- Cultura de Milho
- Nº de Produtores: 4,040 (1,965 Mulheres)
- Nº de VBAs: 21 VBAs (Mulheres)
- Nº de Agro dealers 5

### Bandua

- Cultura de Milho
- Nº de Produtores 3,858 (1,725 Mulheres)
- Nº de VBAs: 19 VBAs (5 Mulheres)
- Nº de Agro dealers 4

### Hortícolas

- Nº de Produtores: 70
- Culturas: Cebola, Cenoura, Repolho e Couves

## Progresso: Insumos

- ▶ 8,850 produtores (3,690 Mulheres) com acesso a insumos em Estaquinha e Bandua;
- ▶ 58 ton de semente de milho hybrid acessado pelos produtores;
- ▶ 10 ton de fertilizantes acessados pelos produtores;
- ▶ 9 Agro-dealers treinados e integrados no Sistema de venda de insumos;
- ▶ 3 empresas fornecedoras de semente envolvidas e com oportunidade de negocio identificado (Zembe, Pannar, Seed Co);

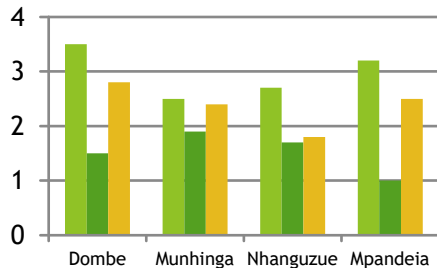


### Constrangimentos

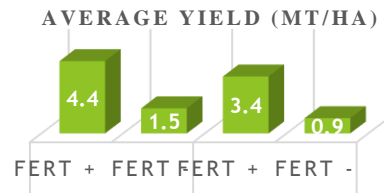
- Confiância entre actores (produtores, VBAs, agro-dealers);
- Recorrente ocorrência de chuvas (cheias –Buzi e Sussundenga), alguma seca, e pragas;
- Insegurança política;

# Extensao

- 39 VBAs (17 mulheres) identificados e treinados (praticas agricolas, negocios, marketing);
- 8,327 (7,718 mulheres) Produtores treinados em boas praticas agricolas, pesticidas;
- 40 campos demonstracao estabelecidos;
- 25 dias de campo realizados nos campos de demonstracao;
- Determinacao de rendimento nos campos de demonstracao;
- 600 produtores participantes em dias de campo;
- Desenvolvimento 4849 e distribuicao de material de extensao;



■ Demoplots PAN 53  
 ■ Demoplots PAN 3M01



## Constrangimentos

- Lagarta do funil e outras pragas;
- Secas e cheias;
- COVID-19
- Inseguranca politica – assistencia tecnica e monitoria

# Planos para 2021

## Actividades centradas no Hub Agro dealer

- ▶ Fortificar a ligação de VBAs, Agro-dealers, compradores e fornecedores de insumos;
- ▶ Estabelecer a Cooperativa Distrital de Agrodealers
- ▶ Assistência técnica aos produtores na produção e comercialização de hortícolas;
- ▶ Promoção e estabelecimento de demos para milho e horticultura;
- ▶ Treinamento de produtores em boas práticas agrícolas;
- ▶ Assistência técnica aos produtores (milho e hortícolas);

# AGRIMERC ODS - Organização para o desenvolvimento Sustentável da Agricultura e Mercados Rurais

A Agrimerc é uma cooperativa de prestação de serviços sem fins lucrativos e serve aos provedores de insumos e agentes de Extensão Agrícola baseados na comunidade a assistir as famílias na produção e a comercialização.

- ▶ **Missão:** Criar um ambiente próspero e de segurança alimentar através dum abordagem de crescimento agrícola baseado na capacitação e assistência aos diferentes operadores agrícolas na cadeia de produção e comercialização.
- ▶ **Visão:** Contribuir para o aumento da produtividade agrícola numa base sustentável, através de uma abordagem de desenvolvimento e transferência efectiva de conhecimentos e tecnologias para assegurar a especialização dos operadores agrícolas no mercado
- ▶ **Valores:** A AgriMerc ODS orienta-se pelos valores de boa governação, transparência, prestação de contas, equidade de género, participação e integridade ética, moral e deontológica.

Estrada de Vanduzi via Matsinho  
Bairro Piloto, Zona 19, Cidade de Chimoio  
[www.agrimerc-ods.com](http://www.agrimerc-ods.com)



# Obrigado!



TO SERVE HUMANITY SO ALL MAY LIVE AS GOD INTENDED



ADRA



*Justice  
Compassion  
Love*



# Current Food Security and Livelihoods Activities

*Justice.  
Compassion  
Love*

## Food Aid

- ADRA is implementing conditional Lean Season assistance as Food for Assets in partnership with WFP using voucher and in-kind modalities.
- The project started in November 2020 and will end in March 2021
- 5 districts targeted in Inhambane and Gaza Province as shown in the following table.



*Justice.  
Compassion  
Love*

Province	District	Number of Beneficiaries		Total	Modality
		Males	Females		
Gaza	Chibuto	16,080	17,420	33,500	Commodity Voucher and Value Vouchers
	Guija	3,530	6,470	10,000	Commodity Voucher and Value Vouchers
	Massangena	3,168	3,432	6,600	In-kind
Inhambane	Funhalouro	7,060	12,940	20,000	Commodity Voucher and Value Vouchers
	Panda	5,340	12,410	17,750	Commodity Voucher and Value Vouchers
Total		35,178	52,672	87,850	

# Rations

## In-kind

- Monthly Food Ration;
- Cereal (maize) – 50kg
- Pulses (split peas and beans) – 7.5kg
- Vegetable oil – 3liters

## Vouchers

- **Monthly Value Voucher** per family of xxxx MZN.
- **Commodity voucher** per family with ;
- Arroz –
- Farinha de milho-
- Feijao -
- Amendoim -
- Oleo -
- Sal -

## Seeds Distribution

*Justice.  
Compassion  
Love*

- ADRA commenced a Project on the 15th of February 2021 a Rapid Response in partnership with BHA (USAID) in a Shelter and Livelihoods project targeting 1640 families in Inhassunge (750) and Luabo (890) Districts.
- ADRA will assist families that have been affected with seeds for 0.5ha production and will distributed maize seed (7kg) and cow peas (2kg) in Luabo District to 746 families.





# Planned Food Security and Livelihoods Activities 2021

JUSTICE. COMPASSION. LOVE.





## Food Aid

*Justice.  
Compassion  
Love*

- Besides the food aid that ADRA is providing through the conditional LSA until March 2021, ADRA has in pipeline funds that will be available for food distribution for 1,600 households for Sofala Province in Nhamatanda for 4 months. ADRA will also provide Nutrition Supplements through distribution of CSB to avoid cases such as the Pellagra cases that occurred last year.



## Food Aid

- The food that will be provided will be the following;
- Rice 50kg
- Beans – 10kg
- Vegetable oil – 4 liters
- Salt – 1kg
- Corn Soya Blend – 5kg
- The first distributions are expected in March 2020 and in-kind distributions will be the modality.



## School Feeding

*Justice.  
Compassion  
Love*

- ADRA has a school feeding program in Boane and will restart in March 2021 and will continue to assist 12,648 students with lunch daily until December 2022 in 19 schools.
- The Food will transition from RAH donation (a mixture of rice with soy, dehydrated vegetables and Micronutrient Powder accompanied with distribution of vegetable oil and salt) to local procurement from 2021.





# Obrigado

JUSTICE. COMPASSION. LOVE.



# National Meeting 18<sup>th</sup> February 2021



## Agenda

- Eloise / Response update / MRA results - 10 mins
- Cabo Delgado humanitarian updates - 10mins
- FSC monthly responses update for January 2020 (WFP, FAO, FSC) - 20 mins
- Linha Verde Updates - 15min
- Meet your FSC partner: 5 minutes presentation by FSC members (ActionAid, ADRA, AGRIMERC, Caritas) – 30 min
- **AoB (All)-5 mins**

- **HRP** - Project Module! Reminder COB today!
- **Country Cluster Performance Monitoring (CCPM) 2020** – Deadline tomorrow!
- **New 5W template training** – Today (15 to 17 hours!)
- **GiHA:** gender in humanitarian action training

# Gender in humanitarian action

## Agenda Training



<b>Monday 22st February 2021   2,5 hours in the AM</b>	
Welcome & Introduction to the GenCap and the GiHA workshops	
Why are we here and what are we going to achieve together. Get to know the team	
Gender in the Normative Framework	
Partner's Overview of GE issues in Mozambique	
What has been done/Areas of interest/Available information/Common challenges/Sector standards/Community building & learning	
<b>Monday 1st March 2021   2 hours in the AM</b>	<b>Monday 1st March 2021   1-1,5 hours in the PM</b>
Workshop: Clusters to work with their existing SADD and current processes. Clusters to identify an actionable way to improve the use of SADD	The use of SADD in real programming: Un Habitat and the project pilot on GE and resettlement
Case studies	Forum discussion on RGA and Gender Analysis. How to use the available information and how to inform programming
<b>Monday 8th March 2021   2 hours in the AM</b>	<b>Monday 8th March 2021   1-1,5 hours in the PM</b>
Workshop: Clusters to identify priority areas for improving GEPIE. Do no harm. Key gender inequalities and protection risks . GBV multisectoral approach.	<i>Explore the relation between Gender and Culture, GE, SEA and GBV. Understanding the importance of meaningful participation</i>
Good practices	PSEA: the case of Mozambique
<b>Monday 15th March 2021   2 hours in the AM</b>	<b>Monday 15th March 2021   1-1,5 hours in the PM</b>
Workshop: Clusters to identify ways to address gender inequalities and to consolidate key sectoral commitments to improve GEPIE	Gender equality and disaster management. Understanding the importance of counting of gender progressive SCOs
Commitments	The WPS agenda and the H-D Nexus: the case of Mozambique
<b>Monday 22th March 2021   2 hours in the AM</b>	
Key outcomes of the Cluster Workshops / Clusters minimum commitments	
Engendering indicators and the link with GRB	
Close and Continuation	

# Obrigado



MOÇAMBIQUE  
**FOOD SECURITY CLUSTER**

*Strengthening Humanitarian Response*

---