



Food Security & Livelihoods Coordination Meeting

5 April 2022

Cox's Bazar, Bangladesh



**COX'S BAZAR
FOOD SECURITY
SECTOR**

Photo: ISCG / Saikat Mojumdur

Action Points

FSS JRP 2022 UPDATE

JRP has been launched on 29 March 2022 (publication date).

[Video link](#)

The final JRP document is available at the following link.

[The 2022 JRP on the Humanitarian Response website](#), including the two-page 'At a Glance'.

24 organizations (37 individuals) in attendance ;		
BRAC	ICRC	UNWOMEN
CPI	IOM	VSO
CRS	IVY –Japan	WFP
CWW	MUKTI	WFP-SL
DRC	NRC	
FAO	PIB	
FIA	RIC	
FIVDB	SCI	
GIZ	SHED	
Helvetas	UNHCR	

Action Points

RAMADAN UPDATE

FSS to get endorsement of recommended "Ramadan basket" from RRRC by 11 April 2022

SAG NOMINATION

FSS to publish NNGOs SAG election results and composition of SAG by 14 April 2022

JOINT FIELD VISIT

- FSS will organize next joint field visit in May 2022. Dates and theme will be confirmed later.
- Interested FSS partners colleagues to register their name for upcoming site visit by 28 April 2022

24 organizations (37 individuals) in attendance ;		
BRAC	ICRC	UNWOMEN
CPI	IOM	VSO
CRS	IVY –Japan	WFP
CWW	MUKTI	WFP-SL
DRC	NRC	
FAO	PIB	
FIA	RIC	
FIVDB	SCI	
GIZ	SHED	
Helvetas	UNHCR	

Action Points

FSS CAPACITY BUILDING INITIATIVE

FSS to organize upcoming training on Climate Adaptive Agriculture in May 2022

SDTWG

FSS to share revised first draft of Skill development interactive dashboard with map in April 2022

24 organizations (37 individuals) in attendance ;		
BRAC	ICRC	UNWOMEN
CPI	IOM	VSO
CRS	IVY –Japan	WFP
CWW	MUKTI	WFP-SL
DRC	NRC	
FAO	PIB	
FIA	RIC	
FIVDB	SCI	
GIZ	SHED	
Helvetas	UNHCR	

Upcoming Events

- [FSS Bi - Weekly Coordination Meeting](#) | Tuesday 19 April 2022 from 11:00 – 12:30
- [Next SDTWG Meeting](#) | 25 April 2022 | 3:00 – 4:00 pm
- [Livestock Partners Monthly Meeting](#) | Wednesday, 27 April 2022
- EETWG monthly meeting | 10 May 2022 | 15:30-17:00
- FSS Partners Capacity Building Initiative | Climate Adaptive Agriculture | May 2022

24 organizations (37 individuals) in attendance ;		
BRAC	ICRC	UNWOMEN
CPI	IOM	VSO
CRS	IVY –Japan	WFP
CWW	MUKTI	WFP-SL
DRC	NRC	
FAO	PIB	
FIA	RIC	
FIVDB	SCI	
GIZ	SHED	
Helvetas	UNHCR	

Agenda

Meeting agenda

- FSS Updates
- JRP Updates 2022
- Presentations:
 - Homestead Gardening Guidelines-
presentation by FAO
- Partners' Updates
- AOB

FSS updates

Strategic Advisory Group (SAG)

- Objective
- Roles and Responsibilities
- Composition
- Election Procedure

Objectives

Objective of the SAG is to guide the sector and its working groups on strategic direction, coordination, policy decisions and implementation of the FSS's Work Plan

Roles and Responsibilities



Identify the gaps and needs of thematic working groups and task forces and advise on their activation and deactivation



Assist the sector in advocacy, strategic partnerships and fund-raising



Advise the sector coordination team of critical issues and concerns that need to be brought to the attention of the lead agencies or the Inter Sector Coordination Group

Composition of the SAG

(9 voting members+ observers as non-voting)

5 Permanent members (Voting)

- 1 member - World Food Programme
- 1 member - Food and Agriculture Organization
- 1 member – United Nations High Commissioner for Refugees
- 1 member – International Organization for Migration
- 1 member – Food Security Sector Coordinator (alternate: Deputy Coordinator or Co-coordinator)

4 Elected members (Voting)

- 2 members from NNGOs
- 2 members from INGOs

Observers (non-voting)

- Members from donor community
- Members from the other United Nations agencies
- Coordinator -Energy and Environment Technical Working Group
- Coordinator- Skill Development Technical Working Group
- Sector leads from other sectors

Nominations:

- 2 nominations for INGOs- no voting is required.
- 4 nominations for NNGOs- voting is required to select 2 organizations/members

Voting Process

- Shared email link for voting on 04 April 2022, [HERE](#)
- Open for all the FSS active partners
- List of 4 organizations with 4 members is shared
- Select two organizations
- One partner – one vote policy
- The deadline for voting is until **7th April 2022.**
- Queries- technical issues to neamul.akhter@wfp.org, or zolboo.bold-erdene@wfp.org

FSS Strategic Advisory Group



FSS Strategic Advisory Group (SAG) - Member list- 2022

SL #	Name of Member	Organization	Member Status
1	Jessica Kim	WFP	Permanent member
2	Rokibul Alam	WFP	Alternative Member
3	Marco De Gaetano	FAO	Permanent member
4	Bidyuth Mahalder	FAO	Alternative Member
5	Subrata Kumar Chakrabarty	UNHCR	Permanent member
6	Md. Nahid Hasan Raju	UNHCR	Alternative Member
7	Ataur Rahman	NGO Forum	Permanent member
8	Md. Abu Rafat Siddique	NGO Forum	Alternative Member
9	Shamira Haider	BRAC	Permanent member
10	Shahana Hyat	BRAC	Alternative Member
11	Abdul Mannan	SHED	Permanent member
12	Mohammad Anwar Hossen	SHED	Alternative Member
13	Md. Kamrul Hossain	Mukti Cox's Bazar	Permanent member
14	Mian Michael Jahangir	Mukti Cox's Bazar	Alternative Member
15	Zillur Rahman Chowdhury	CWW	Permanent member
16	Richard Mwanditani	CWW	Alternative Member
17	G M Jahangir Kabir	HELVETAS	Permanent member
18	Kamlesh Vyas	HELVETAS	Alternative Member
Voting for SAG (NNGOs) by 7 April 2022			
1	BRAC		
2	NGO Forum		
3	Mukti Cox's Bazar		
4	SHED		

FSS Training: EPR and Anticipatory Actions (including FbF)

Date: 29-30 March 2022

Number of participants: 40 participants from 30 different organizations (ACAPS, AMAN, BBC Media Action, CARITAS, CBM, CNRS, CODEC, Concern Worldwide, Cristian AID, DCA, FAO, FIA, HAPS, Help Age International, ISDE Bangladesh, MSHDF, MUKTI, NACOM, NRC, PARC, Qatar Charity, RIC, SBSKS, SHUSHILAN, TWB, UNWOMEN, VSO Bangladesh, WFP, WVI, Islamic Relief)

Training materials:

- [Day 1](#) Emergency Preparedness and Response, Communication with Communities ([Shongjog | Resources](#)), FSS, Solid Waste Management
- [Day 2](#) Anticipatory Actions with Forecast-based Financing



FSS training on EPR: opening session, 29 March 2022

Upcoming FSS Trainings



Topic: Adaptive Agriculture

Date: mid-May 2022

Modality: in person, 30 participants (requirement: technical agricultural background with 5-10 years of experience in agricultural activities)

Joint field visit | 6 April 2022 | NFI Production Ukhiya



Time	Location	Activity type (e.g. handicraft production)	Organization	Implementing Partner
7:45	WFP Shaibal Luxury Cottage	Travel to Ukhiya	FSS	
8:45 – 9:45	Jaliapalong Union near Sonarpara Bazar, Ukhiya	EFSN Self-Help Group producing Nokshi Khatha	WFP	RIC
9:45- 10:15		Transit (30')		
10:15-11:00	Ali Mora, Rajapalong, Ukhiya	Training and production hub for Income generation for host community	IOM	Protyashi
11:00 – 11:15		Transit (15')		
11:15 – 12:00	AAF-BRAC Centre Rajapalong, Jadimura, Ukhiya	Woman-led livelihood activities (block printing, screen printing, tailoring)	UNHCR	BRAC
12:00 – 12:15		Transit (15')		
12:15 – 12:50	Patabari village Rajapalong, Ukhiya	Women managed Handicraft production	DRC	DRC
12:50 – 13:00		Closing/wrap-up	FSS	
13:00 – 14:30		Travel back to CXB		

Upcoming joint field visits – May



May – livestock in the Host Communities

Guidance Note – Ramadan Food Distribution



To ensure harmonized and coordinated food assistance, it is requested that all partners coordinate through FSS for the best use of resources while avoiding gaps and overlaps. Once information is shared by partners and RRRC office, FSS can provide consolidated data how many organizations are providing assistance in which camps.

Key recommendations:

- Cover the entire camp
- Choose food items that are complementary to what is already available through regular food assistance
- Ensure food safety
- Avoid waste production
- Ensure equal access to distribution
- Follow COVID-19 safety measures during distribution

Information sharing

Partners planning for ad hoc food distributions are requested to fill in the [Forecast Matrix](#) and submit to FSS (coxsbazar.fss@wfp.org) to allow FSS to identify underserved areas and guide partners accordingly.

Guidance Note – Ramadan Food Distribution

Recommended complimentary Ramadan basket per Household:

This basket is a result of a joint discussion lead by FSS with multiple organizations (AMAN, Moonlight Development Society, MSI, PRANTIC, SDI, SBSKS, Qatar Charity) on 24 March 2022.

#	Item	Amount
1	Chickpeas	2 kg
2	Puffed Rice (muri)	1 kg
3	Dates	1 kg
4	Soybean Oil	1 liter
5	Sugar	1 kg
6	Juice powder (for Shorbot)	500 grams
7	Kheshari lentils	2 kg
8	Flattened rice (chira)	1 kg
9	Bangla Shemai	1 kg
10	Onion	1 kg
11	Hot Masala	100 grams
12	Milk powder	200 grams

General Food Assistance (GFA)

Food assistance

- GFA support is continuing through 21 e-voucher outlets (10 Fixed and 18 Flexible item), 12\$=1025.28 and 30% vulnerable HHs received FFC Voucher support (16 items), top-up 3\$=256.32.
- 25 -30 March 2022 Downtime for GFA support, Because of Building Block platform upgradation.
- 20 FFC in 19 Outlet are now available with live fish and chicken.

General Food Assistance updates



Food assistance

Covid-19 risk Mitigation:

Covid-19 compliances and risk minimization activities will be continued through the camp

- Normal EV operation has been started in 3 outlets (KRC, NRC and 20Ex) (Multiple Visit to be allowed)
- Piloting on Normal E-Voucher operation in 6 outlets (MC4, KMS, 8W, BMS, JMTL, UCPR) (2nd time visit)

GFA Ramadan Items: Chickpeas, Vermichilli, Lassa-Semai, Mustered Oil, Puffed-Rice, Flatted-Rice is now available in outlets as flexible items.

FSS JRP – 2022 updates

JRP 2022

- JRP has been launched on 29 March 2022 (publication date)
- [Video link](#)
- The final JRP document is available at the following link.

[The 2022 JRP on the Humanitarian Response website](#), including the two-page 'At a Glance'.

JRP Updates- Facts and Figures



JRP Updates- Facts and Figures



Strategic Objective 1

Work towards the sustainable repatriation of Rohingya refugees/FDMNs to Myanmar.

Support Rohingya refugees/FDMNs to build skills and capacities commensurate with livelihood opportunities available in Rakhine State, with a view to facilitating their early voluntary and sustainable repatriation and reintegration in Myanmar society.



Strategic Objective 2

Strengthen the protection of Rohingya refugee/FDMN women, men, girls, and boys.

In close cooperation with the Government of Bangladesh and affected populations, protect individuals and communities, and contribute to an enabling environment respectful of basic rights and well-being of Rohingya refugees/FDMNs.



Strategic Objective 3

Deliver life-saving assistance to populations in need.

Maintain and rationalize services and assistance to ensure equal access for affected populations in need of humanitarian assistance. In close cooperation with the Government of Bangladesh and affected populations, enhance preparedness and contingency plans for disaster responses at the Upazila level.



Strategic Objective 4

Foster the well-being of host communities in Ukhiya and Teknaf Upazilas.

In close cooperation with the Government of Bangladesh and affected populations, and in the spirit of mitigating the effects of hosting a large number of Rohingya on the host communities in Ukhiya and Teknaf, facilitate equitable access to quality services for communities; mitigate potential tensions between the Rohingya and the host communities; strengthen public service infrastructure and delivery through system and capacity strengthening; support sustainable livelihoods for host communities; and rehabilitate the environment and ecosystem.



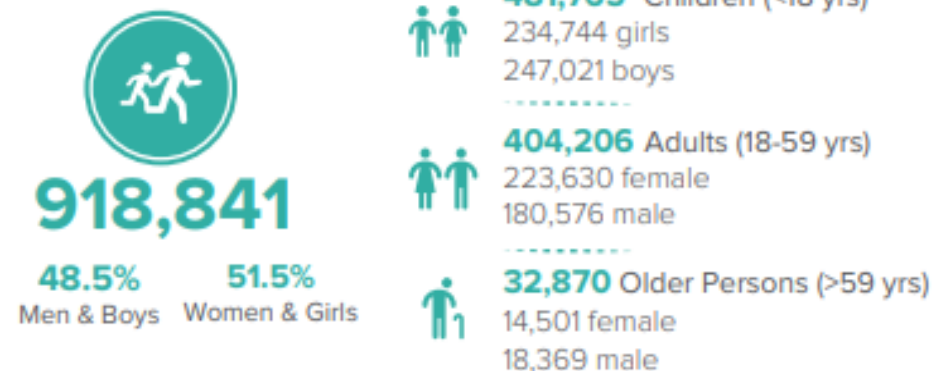
Strategic Objective 5

Strengthen disaster risk management and combat the effects of climate change.

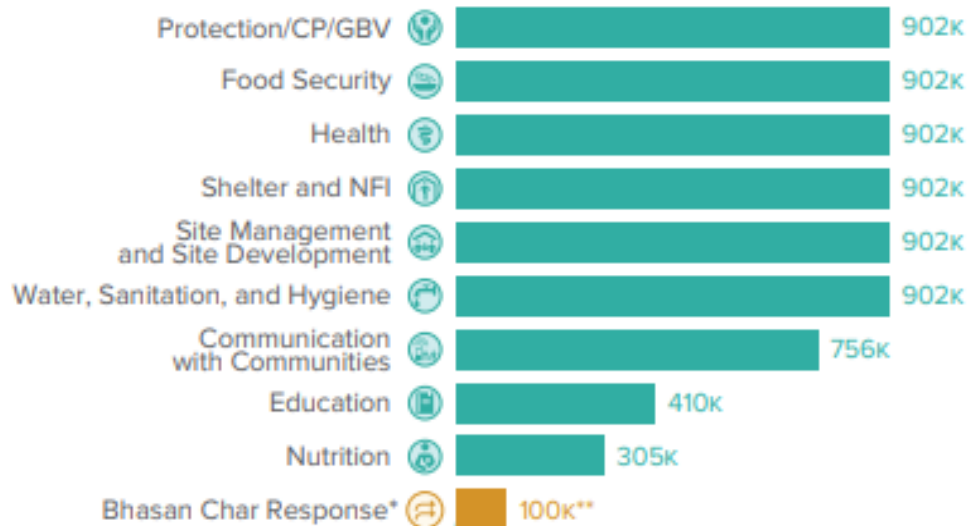
In coordination with the Government of Bangladesh, mitigate the adverse impacts on the environment exacerbated by the Rohingya exodus and their prolonged stay in Bangladesh. This will include efforts to restore ecosystems, promote reforestation, develop waste management plans, and may also require efforts to strengthen disaster coordination mechanisms, promote the use of renewable and cleaner energy sources, and train Rohingya refugees/FDMNs and Bangladeshi first responders to respond to the effects of climate change and disaster risks.

JRP Updates- Facts and Figures

TARGETED ROHINGYA REFUGEES/FDMNs

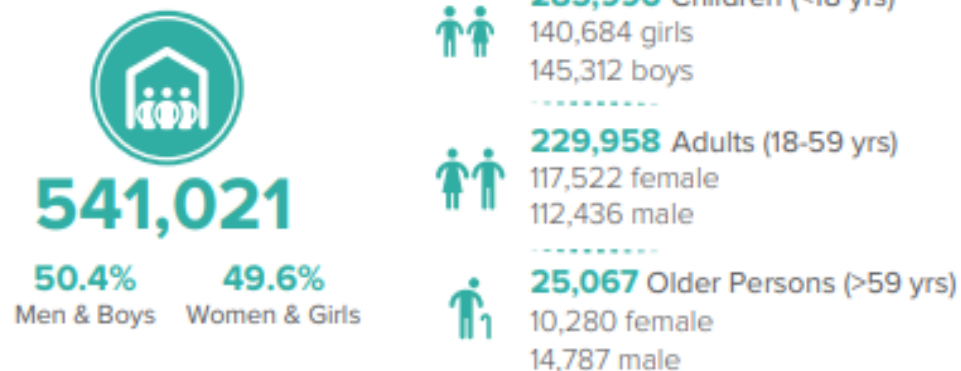


ROHINGYA REFUGEE/FDMN POPULATION TARGETED

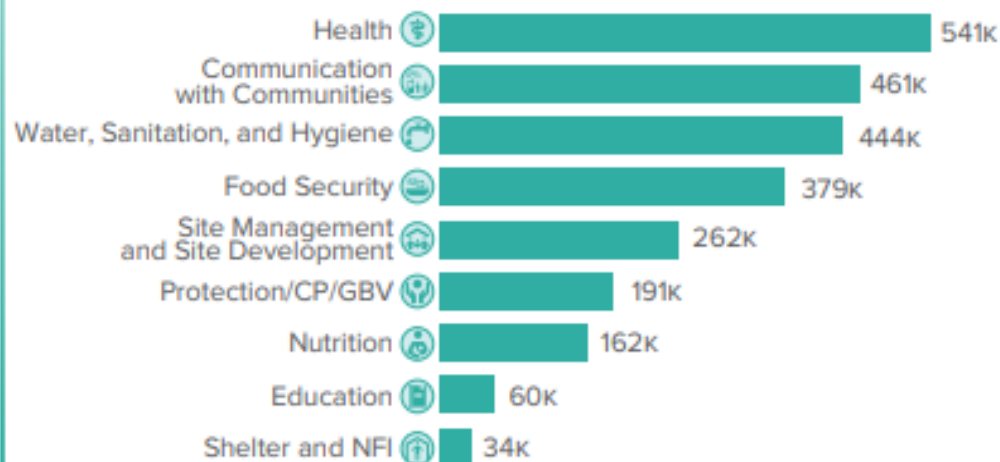


**Voluntary relocations to Bhasan Char will continue to be organized by the Government of Bangladesh, reaching up to 100,000 Rohingya refugees/FDMNs on Bhasan Char by the end of 2022.

TARGETED HOST COMMUNITY IN UKHIYA AND TEKNAF



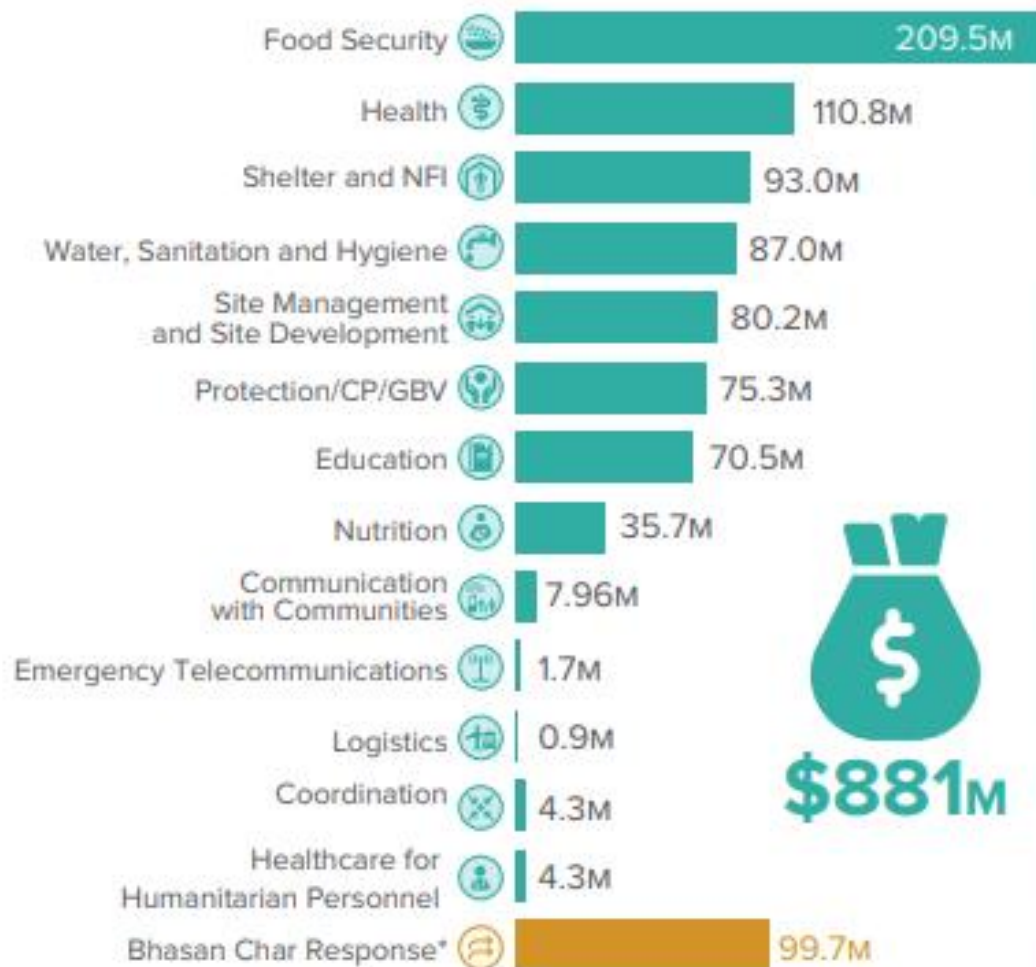
BANGLADESHI HOST COMMUNITY POPULATION TARGETED



Targeted host community population lives in 10 Unions and 1 Municipality of Ukhiya and Teknaf Upazila. St. Martin Union is not included

JRP Updates- Facts and Figures

BREAKDOWN OF PRIORITIZED NEEDS

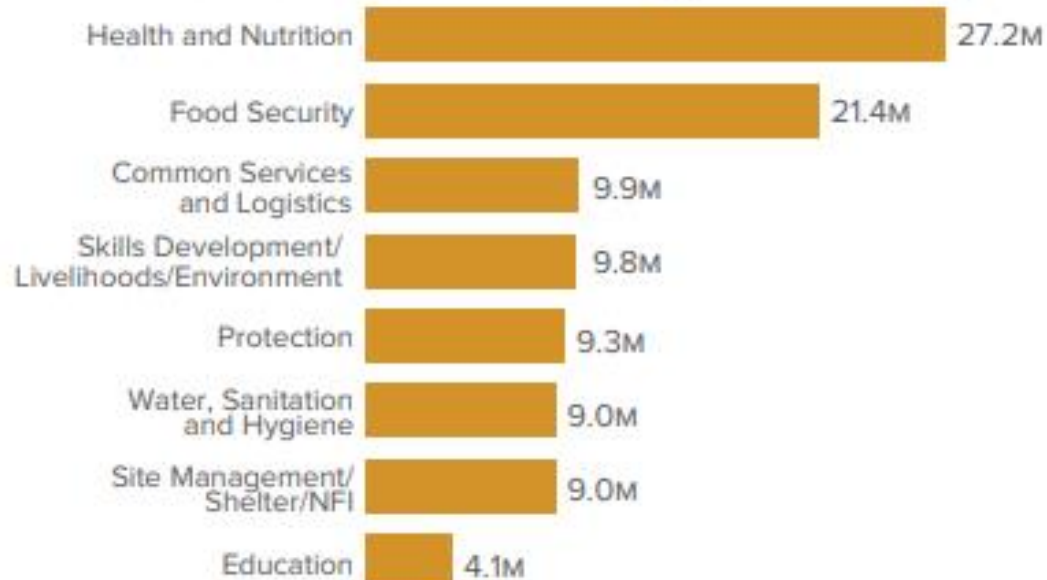


*The Bhasan Char Response is led by the Government of Bangladesh, with the support of UNHCR on behalf of the broader humanitarian community. It is coordinated separately from the Sectors in Cox's Bazar.

BHASAN CHAR RESPONSE KEY FIGURES



BREAKDOWN OF PRIORITIZED NEEDS (BHASAN CHAR)



**Voluntary relocations to Bhasan Char will continue to be organized by the Government of Bangladesh, reaching up to 100,000 Rohingya refugees/FDMNs on Bhasan Char by the end of 2022.

JRP Updates- Facts and Figures



2022 JOINT RESPONSE PLAN APPEALING PARTNERS

ACF, Agrajatra, AMAN, BRAC, CAID, CARE, Caritas, CBM, COAST, COTE, CWW, DCA, DRC, Educo, FAO, FIVDB, GH, GlobalOne, GUSS, HAEFA, HEKS, HelpAge, Helvetas, HI, HMBD, HOPE, ICCO, IOM, IRC, IVY, MdM, MG, MM, MSI, Mukti, Nabolok, NGOF, NRC, Oxfam, PARC, Plan, Prantic, PWJ, RPN, SCI, SI, SKUS, TdH, Tearfund, UN WOMEN, UNDP, UNESCO, UNFPA, UNHCR, UNICEF, VSO, WFP, WHH, WHO, WVI, YPSA

Livelihoods and Self-Reliance

Livestock:

- The Regular monthly livestock partner's meeting for March 2022 wasn't held on 30 March due to conflicting schedule with the FSS Training: Emergency, Preparedness and Response (EPR) and Anticipatory Actions (including FbF) on 29-30 March 2022.
- Re-scheduled monthly livestock partners meeting is 27 April 2022 at 11.00 AM – 12.00 PM

Information Management Update

March 5W and CfW/Volunteer information request deadlines:

- [Template for Volunteer and CfW Information, January 2022 - request for action](#) | **10 April 2022**
- FSS 5W Reporting | [5W response tracker](#) | Excel [5W response tracker](#) | [Guidance note](#) | [FSS Climate Smart Agriculture \(CSA\) Quick Guide](#) | **6 April 2022**

As always, thanks so much for your timely reporting!

For all your Information Management needs please contact:

- Zolboo Bold-Erdene, zolboo.bold-erdene@wfp.org (Mobile: 01313097855)
- Neyamul Akhter, neamul.akhter@wfp.org (Mobile: 01313770424)

Skill Development TWG updates

Skill Development Working Group



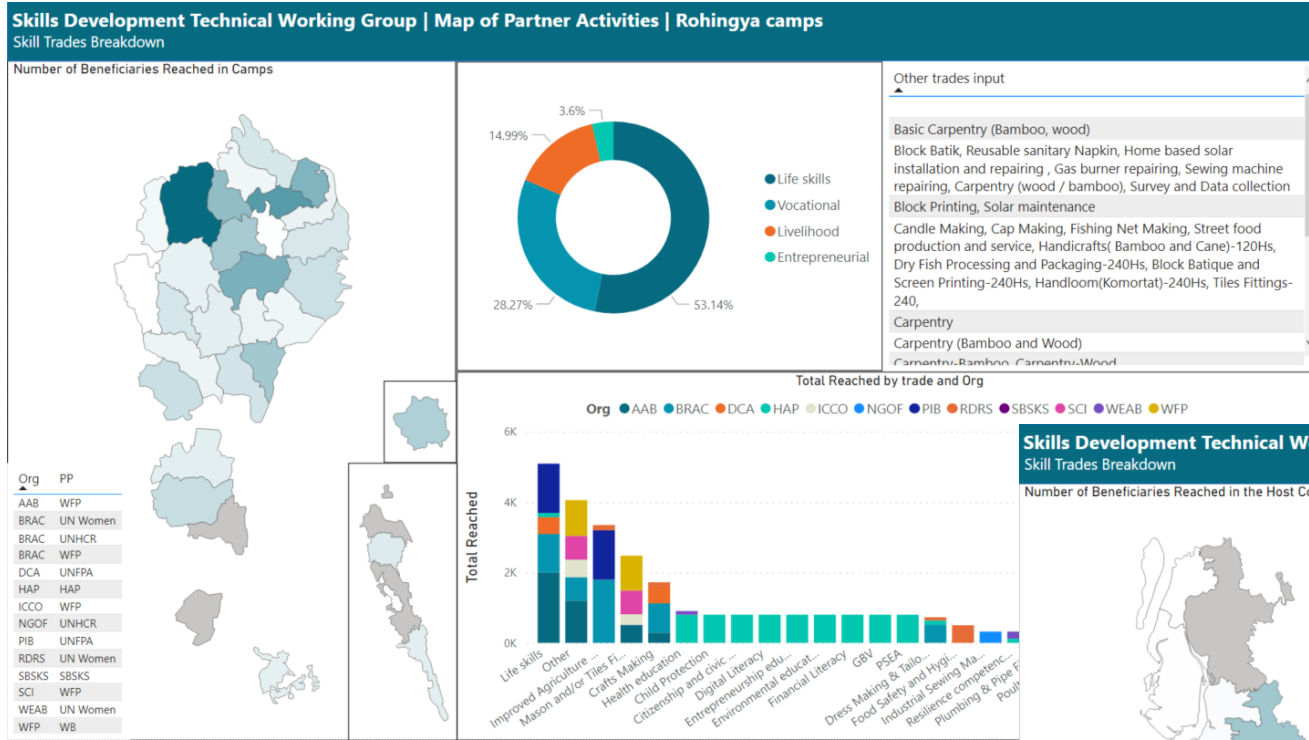
Skills Development Technical Work Group (SDTWG) is a multi-sectoral technical working group aiming at building synergies amongst stakeholder efforts and initiatives across all sectors engaging in Skill Development in the refugee camps and host community.

SDTWG's main objective is to establish an effective network with the relevant partners and agencies to collect quality information regularly and in a timely manner; to **ensure cooperation** among different partners to avoid duplication, share lessons learnt, build synergies and ensure a harmonized approach.

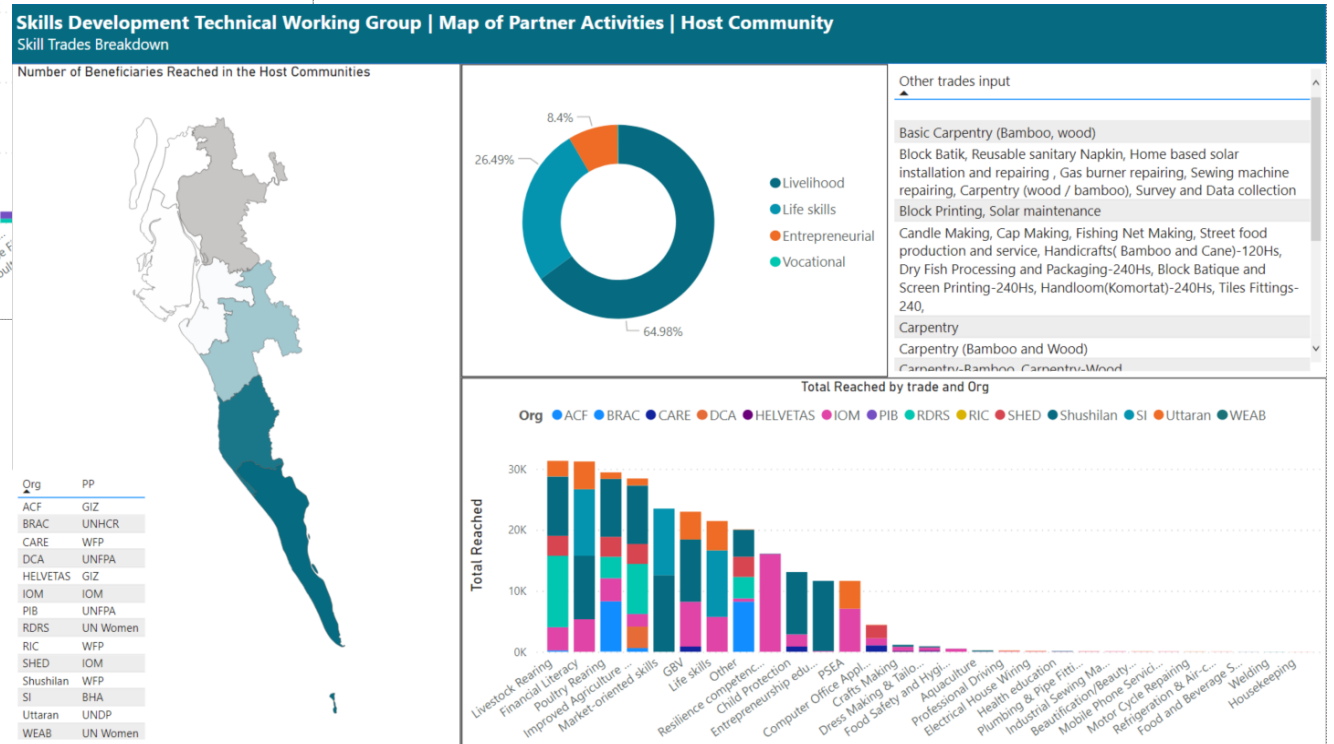
Skills Development Technical Working Group – Contacts of Co-Chairs

- 1. Joseph Falcone** Food Security Sector/Skills Development focal point
joseph.falcone@wfp.org WFP work mobile: +8801730309883
WhatsApp: +8801531339092
- 2. Ashraful Rahman** Education Sector/Youth Working Group co-chair
mdrahman@unfpa.org
mobile / WhatsApp: +8801760748034
- 3. Immad Ahmed** Education Sector/Youth Working Group co-chair
immad@hap.consulting
mobile / WhatsApp: +8801729748252

Skill Development WG mapping update



- First draft of interactive dashboard with map shared – but facing technical issues.
- To be circulated in FSS mailing list once resolved



Skill Development WG updates



Other updates:

- Advocacy strategy – CXB specific SD advocacy strategy rough draft is being revised this week

If interested in SDTWG mailing list, reach out Zolboo Bold-Erdene | FSS IMO – zolboo.bold-erdene@wfp.org

Next SDTWG Meeting will be held on Monday, 25 April 2022

EETWG updates

Energy & Environment Technical Working Group updates



About:

The EETWG is a multi-sectoral technical working group which aims to build synergies amongst stakeholder efforts and initiatives across all sectors with a special focus on identified linkages between the Food Security, Site Management and Shelter/NFI Sectors. The group is currently made up of 37 partner organizations implementing energy and environmental programmes in the Rohingya Refugee Camps and Host Communities of Cox's Bazar.

Key activities include solar lighting, lightning protection, cleaner cooking, solid waste management initiatives including up/recycling, plantation/reforestation, land stabilization through nature-based solutions, tree nursery management/establishment, watershed management, eco-friendly construction and wildlife management. EETWG members are also active in conducting environmental and energy impact assessments and research.

Resources:

- EETWG google drive: <https://drive.google.com/drive/u/2/folders/1RC6UPbss3tYTZ1etWbqZwRhU6iltNcap>
- Old EETWG google drive (pre-2021): https://drive.google.com/drive/u/0/folders/1c3tSPMk8cEI-F_OOOy7oo9EnxcLZEuON

Contact person: Fenella Henderson-Howat, Interim Coordinator, Fenella.Hendersonhowat@wfp.org

Next meeting: TODAY Tuesday, 5 April @ 2pm



Energy & Environment Technical Working Group updates



EETWG Updates (more updates in EETWG meeting at 2pm today!):

- **2022 Plantation Shapefiles** received from: UNHCR-IUCN, UNHCR-CNRS, WFP-FAO-ACTED, WFP-FAO-CAID, WFP-FAO-Cordaid, WFP-FAO-CARE, IOM-FAO, IOM-FAO-ActionAid, IOM-FAO-CARE, DRC, BAT, DCA. Map under review by Site Planners and overlaps being addressed
- **New Publication: 'Rohingya Refugee Camps and Forest Loss in Cox's Bazar, Bangladesh: An Inquiry Using Remote Sensing and Econometric Approaches'**, World Bank – UNHCR Joint Data Center, <https://openknowledge.worldbank.org/handle/10986/37053>
- **Training workshop on using geospatial for improved environmental monitoring in Cox's Bazar** | 13 April (14:00-16:00) | ISCG meeting room | Limited to 20 participants who have existing knowledge of geospatial and Open Street Map (OSM) and interest in monitoring
- **Gender Mainstreaming Training** | 9 May (full-day) | Venue to be confirmed | Limited to 25 participants, noting the training will be held in Bangla
- **2021 Plantation Assessment** | mid-May
- **2022 Plantation Practical Training** | Date TBC | | Open to all EETWG 2022 Plantation Partners (UNHCR, IUCN, CNRS, WFP, FAO, ACTED, CAID, Cordaid, IOM, ActionAid, CARE, DRC, BAT, DCA)



Presentation: Homestead Gardening Guidelines



Food and Agriculture
Organization of the
United Nations

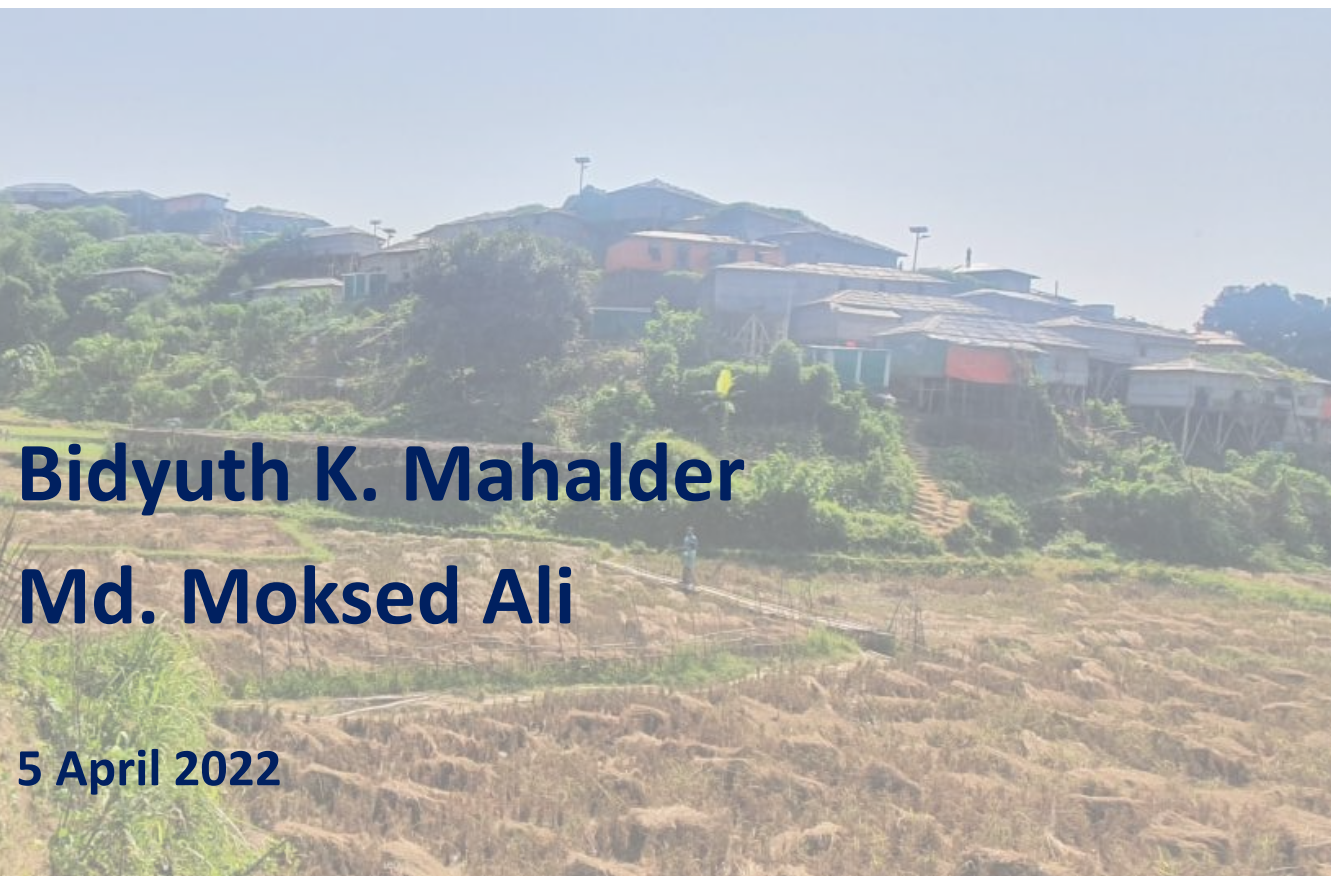


World Food
Programme



COX'S BAZAR
FOOD SECURITY
SECTOR

Homestead Gardening Guidelines for Vegetable Production: Stress Environment in Rohingya Camps, Host Communities in Cox's Bazar and Beyond



Bidyuth K. Mahalder

Md. Moksed Ali

5 April 2022



Context:

Vegetable Production- At Stressed Environment



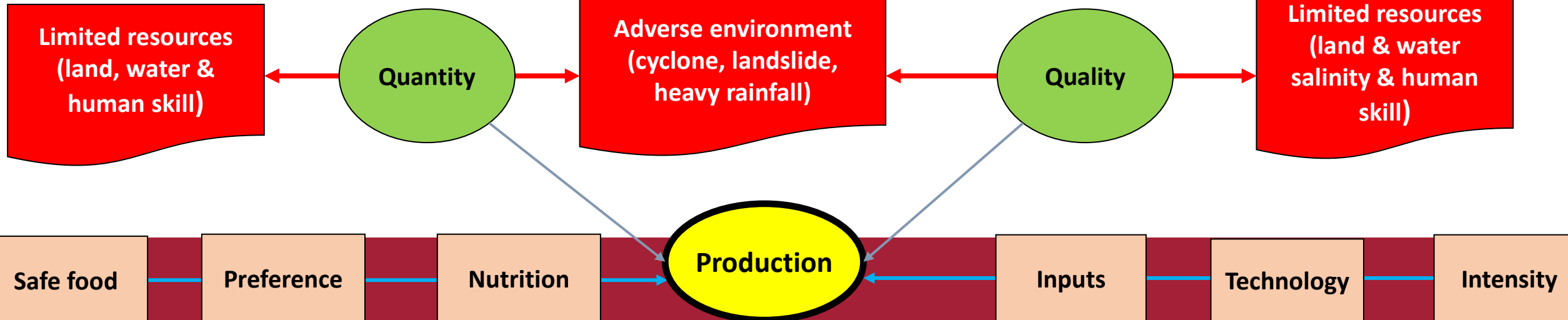
Rohingya Camp-Cox's Bazar



Host Community -Cox's Bazar



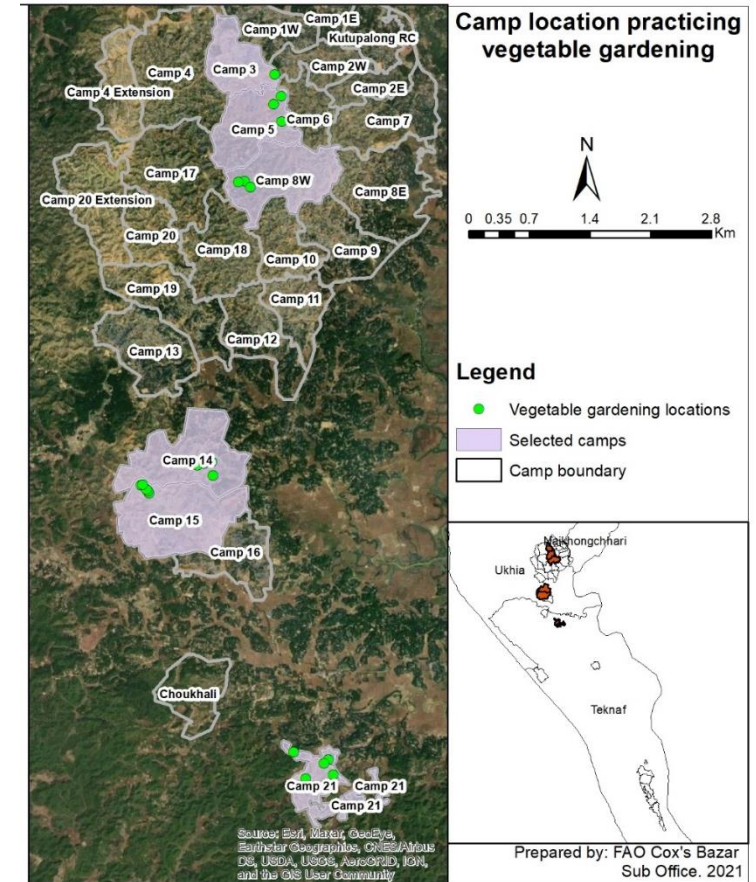
Rohingya Camp-Bhasan Char



Objectives

The overall objectives of the Guidelines on homestead vegetable Gardening at the Rohingya camps and host communities in Cox's Bazar:

- Introduce situation-specific production systems in increasing productivity, reducing production costs and minimizing potential risks ;
- Appropriate **crop species** at highly congested **environment-sensitive homesteads** in consideration with **seasonal effects**, and **value for money**;
- Quantify year-round household requirements of vegetables;
- Consider major obstacles and potential measures for recommended interventions;





Methods

- Data gathered from secondary sources on practicing vegetable production systems (VPSs); and
- Consulted reference documents on the geographical, social and environmental issues of the study area.

The study design focused on:

I. households' visit and individual interview;

II. focus group discussions (FGDs) with beneficiaries' groups;

III. key informant interviews (KIIs).

380 HHs Interviewed

6 FGDs @ 10-12 participants

12 KIIs with CWW, BRAC staff and Majhi

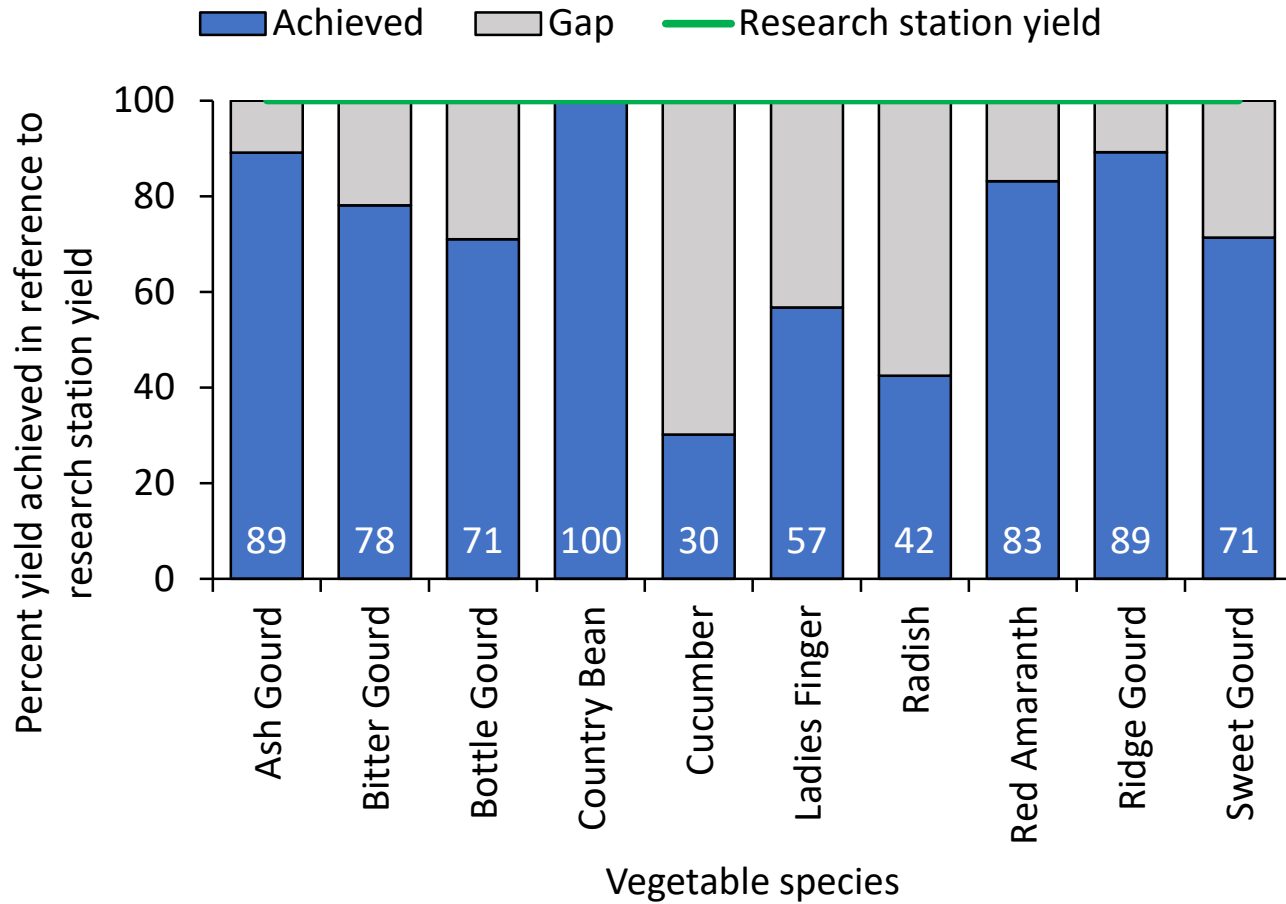
6 Production Systems

12 Camps growing vegetables





Findings: Status of productivity





Production Systems to Achieve the Goals

Homestead vegetable production system: Bed planting



- A piece of plain to mild slopy natural land with no aboveground structure.
- Relatively on higher alleviation to facilitate drainage, and good access of sunlight.
- Usually requires extensive soil work, which also depends on crop selection.
- Not suitable under highly stressed edaphic and non-edaphic environments.

Situational Context		Value for Money		Management Perspective	
Space Used (61.3 sft)	Species Diversity (Moderate)	Productivity (76 kg / dec.)	Production Cost (BDT 2,139/dec.)	Water Requirement (High)	Species Suitability (Very good)
Soil disturbance (High)		Economic Coefficient (1.39)		Easiness of Adoption (Moderate)	

Production Systems to Achieve the Goals

Homestead vegetable production system: Pit planting



- Enclosed smaller separate beds sitting on with full or partial basal connection to land surface.
- Uses soils collected from elsewhere; soils are prepared and conditioned as required.
- Suits stressed edaphic (such as soil salinity, hard and stony soil and unfertile soil) and non-edaphic (such as water logging and water salinity) environments as it does not use natural land.

Situational Context

Management Perspective

Value for Money

Situational Context		Management Perspective		Value for Money	
Space Used (67.3 sft)	Species Diversity (Good)	Species Suitability (High)	Easiness of Adoption (Easy to adopt)	Productivity (107 kg/dec.)	Production Cost (BDT 3,477/dec.)
	Soil disturbance (Moderate)		Water Requirement (Moderate)		Economic Coefficient (1.28)



Production Systems to Achieve the Goals

Homestead vegetable production system: Sack planting



- Similar to pit planting except for sacks are used as enclosure material, does not have direct attachment to land surface, and the system is moveable.
- Like pit planting, it uses collected soil; soil is prepared and conditioned as required.
- Suits stressed edaphic and non-edaphic environments as it is not connected to natural land.

Situational Context		Management Perspective		Value for Money	
Space Used (115.6 sft)	Species Diversity (Moderate)	Species Suitability (High)	Easiness of Adoption (Moderate)	Productivity (130 kg/dec.)	Production Cost (BDT 3,757/dec.)
	Soil disturbance (Low)		Water Requirement (Low)		Economic Coefficient (1.23)



Production Systems to Achieve the Goals

Homestead vegetable production system: Trellis growing



- Similar to bed planting except for some kind of horizontal structure is constructed above the soil surface for creeping vegetables.
- Limits crop species choice as non-creeping crops experience various degree of shadow from crops spreads on aboveground structure.
- Extensiveness of soil work depends on crop choice.
- Not suitable under highly stressed edaphic and non-edaphic environments.

Situational Context		Value for Money		Management Perspective	
Space Used (120 sft)	Species Diversity (Poor)	Productivity (112 kg/dec.)	Economic Coefficient (1.45)	Species Suitability (High)	Easiness of Adoption (Easy to adopt)
	Soil Disturbance (Moderate)		Production Cost (BDT 2,800 /dec.)		Water Requirement (Moderate)

Production Systems to Achieve the Goals

Homestead vegetable production system: Vertical growing



- An unique system specific to creeper vegetables to address limitation in horizontal creeping area,
- Applicable to both favourable and stressed edaphic and non-edaphic environments.
- Limits vegetable species choice as non-creeping crops are not ideally

Situational Context		Value for Money		Management Perspective	
Space Used (120 sft)	Species Diversity (Poor)	Productivity (78 kg/dec.)	Economic Coefficient (1.61)	Species Suitability (Moderate)	Easiness of Adoption (Not easy)
	Soil Disturbance (Moderate)		Production Cost (BDT 1,688/dec.)		Water Requirement (Moderate)

Production Systems to Achieve the Goals

Homestead vegetable production system: Multilayer growing



- An improved trellis system adding relatively light extra layer(s) above the main trellis to enhance aboveground surface area.
- Limits crop species choice as non-creeping crops experience various degree of shadow from crops spreads on aboveground structure. However, extra layer(s) could accommodate more crops, compared to trellis system, if species are appropriately selected.
- Extensiveness of soil work depends on crop choice.
- Not suitable under highly stressed edaphic and non-edaphic environments.

Situational Context		Value for Money		Management Perspective	
Space Used (166.8 sft)	Species Diversity (Poor)	Productivity (109 kg/dec.)	Economic Coefficient (1.33)	Species Suitability (Good)	Easiness of Adoption (Moderate)
	Soil Disturbance (Moderate)		Production Cost (BDT 2,886/dec.)		Water Requirement (Moderate)



Comparative Standing of Six Homestead Vegetable Production Systems

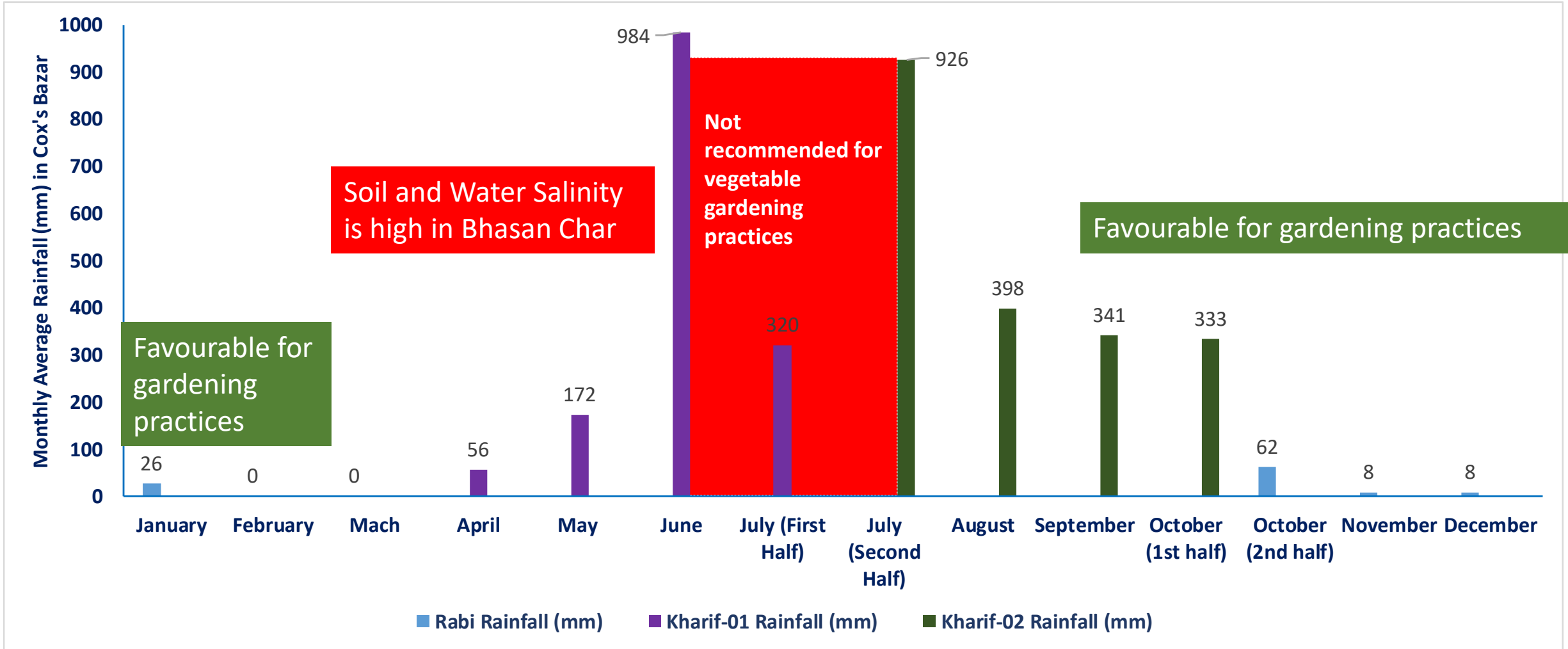
System property class	System property	Production system					
		Bed planting	Pit planting	Sack planting	Trellis growing	Vertical growing	Multilayer growing
Situational context	Space friendliness	●	●	●	●	●	●
	Species diversity	●	●	●	●	●	●
	Environment friendliness	●	●	●	●	●	●
Value for money	Productivity	●	●	●	●	●	●
	Cost effectiveness	●	●	●	●	●	●
	Economic value	●	●	●	●	●	●
Management perspectives	Water economics	●	●	●	●	●	●
	Species suitability	●	●	●	●	●	●
	Easiness of adoption	●	●	●	●	●	●

Score point
(0 to 100 scale, relative to maximum performance of a system defined as 100)

- Excellent (≥ 80%)
- Good (≥ 60 - <80%)
- Moderate (≥ 40 - <60%)
- Poor (≥ 20 - <40%)
- Extreme Poor (< 20%)





Risks in Production: Heavy Rainfall, Soil and Water Salinity





Crop Calendar

Crop Calendar for Vegetable Production in Rohingya Camp													
	Sowing/Transplantation												Kharif-01: 16 March - 15 July Kharif-02: 16 July - 15 October Rabi: 16 October - 15 March
	Crop growing & harvesting												
	Rabi			Kharif-01				Kharif-02			Rabi		
Vegetable Species	Jan	Feb	March	April	May	Jun	Jul	Aug	Sep	Oct	Nov	Dec	Production System
Bottle Gourd													Sack, Pit, Trellis, Multilayer
Sweet Gourd													Sack, Pit, Trellis, Multilayer
Bitter Gourd													Sack, Pit, Trellis, Multilayer
Ridge Gourd													Sack, Pit, Trellis, Multilayer
Ash Gourd													Sack, Pit, Trellis, Multilayer
Cucumber													Sack, Pit, Trellis, Multilayer, vertical growing
Tomato													Sack, Pit
Eggplant													Sack, Pit
Country Bean													Sack, Pit, Trellis, Multilayer, vertical growing
Yard-long Bean													Sack, Pit, Trellis, Multilayer, vertical growing
Indian Spinach													Sack, Pit, Trellis, Multilayer, vertical growing
Ladies finger													Pit & Sack
Radish													Pit & Sack
Red Amaranth													Multilayer & Pit



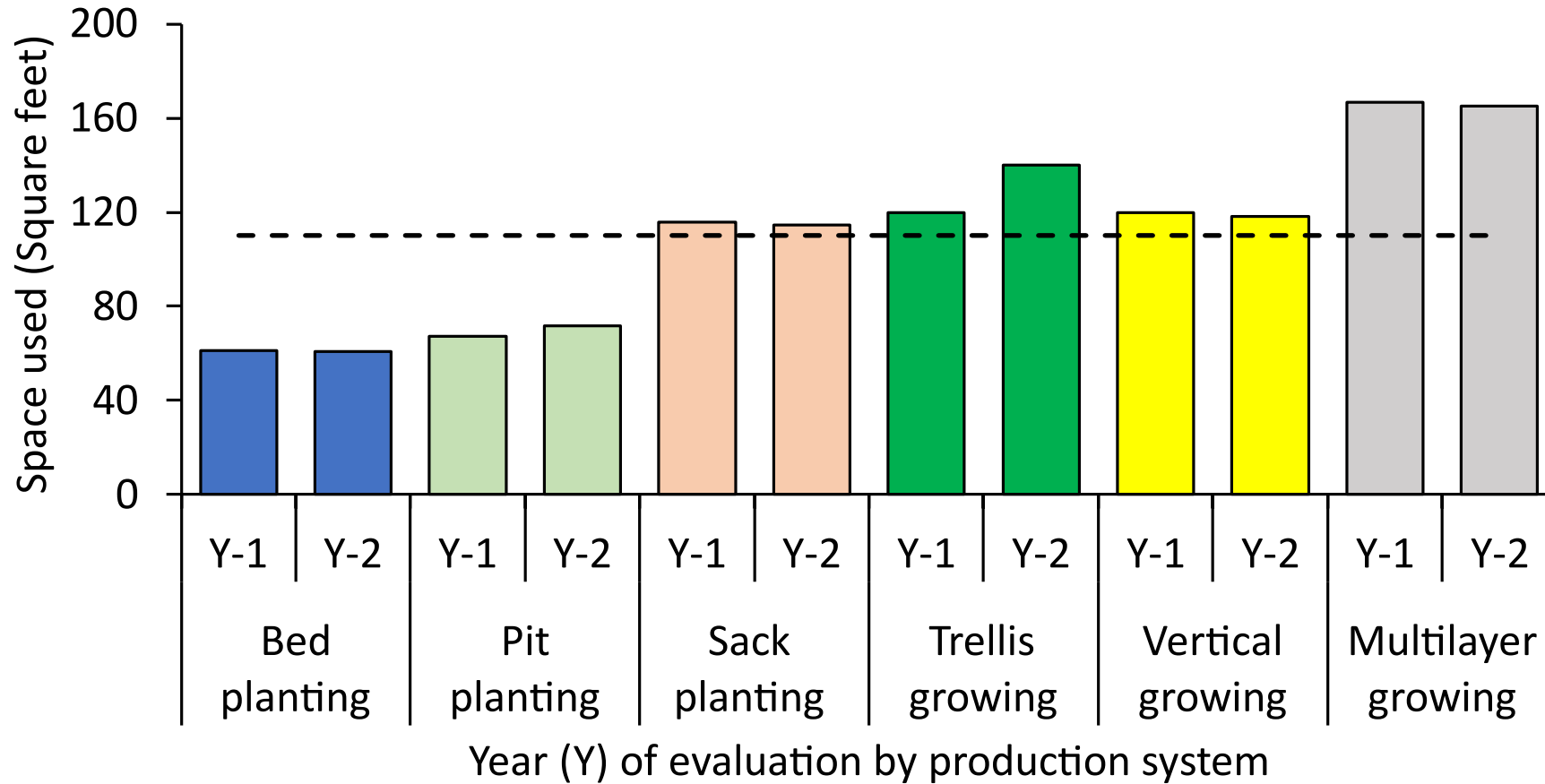
Vegetable Species with Production Systems

Sl.	Vegetable Species	Scientific Name	Production Method	Growing Season	Reference Yield (Kg/dec.)
1	Bottle Gourd	Lagenaria siceraria	Sack, Pit, Trellis & Multilayer	Winter & Summer	223-243
2	Sweet Gourd	Cucurbita Maxima	Sack, Pit, Trellis & Multilayer	Winter & Summer	142-162
3	Country Bean	Phaseolus vulgaris	Sack, Pit, Trellis, Multilayer & Vertical growing	Winter	61-69
4	Tomato	Solanum lycopersicum	Sack and Pit	Winter	324-344
5	Bitter Gourd	Momordica charantia	Sack, Pit, Trellis & Multilayer	Winter & Summer	85-93
6	Yard-long Bean	Vigna unguiculata	Sack, Pit, Trellis, Multilayer & Vertical growing	Summer	61-81
7	Eggplant	Solanum melongena	Sack and Pit	Winter & Summer	162-182
8	Ladies Finger	Abelmoschus esculentus	Sack and Pit	Summer	69-85
9	Cucumber	Cucumis sativus	Sack, Pit, Trellis, Multilayer & Vertical growing	Summer	263-283
10	Radish	Raphanus sativus	Sack and Pit	Winter	263-283
11	Indian Spinach	Basella alba	Sack, Pit, Trellis, Multilayer & Vertical growing	Summer	202-304
12	Red Amaranth	Amaranthus cruentus	Sack and Pit	Winter & Summer	50-60
13	Ash Gourd	Benincasa hispida	Sack, Pit, Trellis & Multilayer	Summer	100-120
14	Ridge Gourd	Luffa acutangula	Sack, Pit, Trellis & Multilayer	Summer	90-100



Year-1 (2020) and Year-2 (2021) Data: Spaced Used

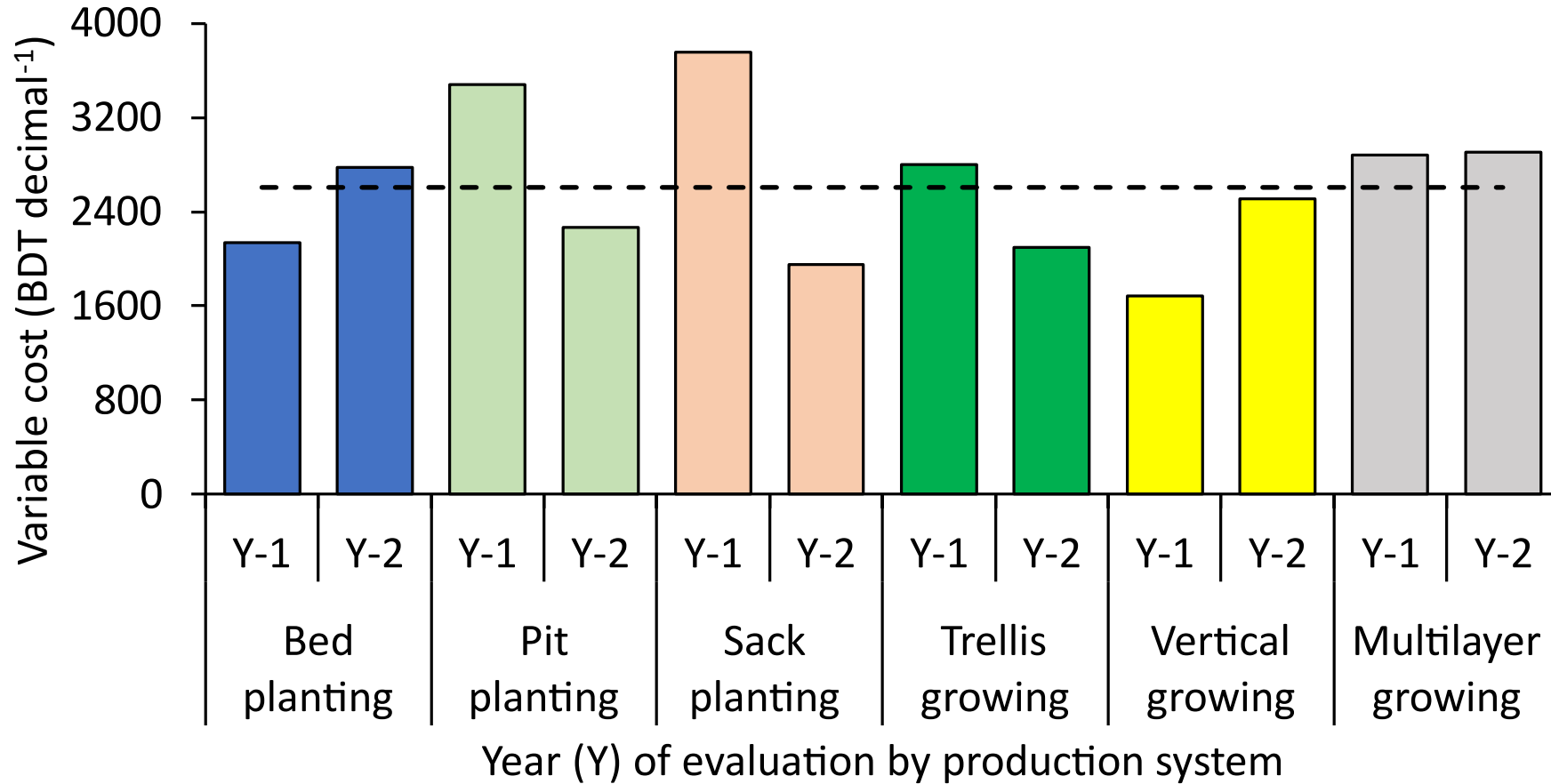
--- Average across production system and years





Year-1 (2020) and Year-2 (2021) Data: Variable Costs of Production

- - - Average across production system and years

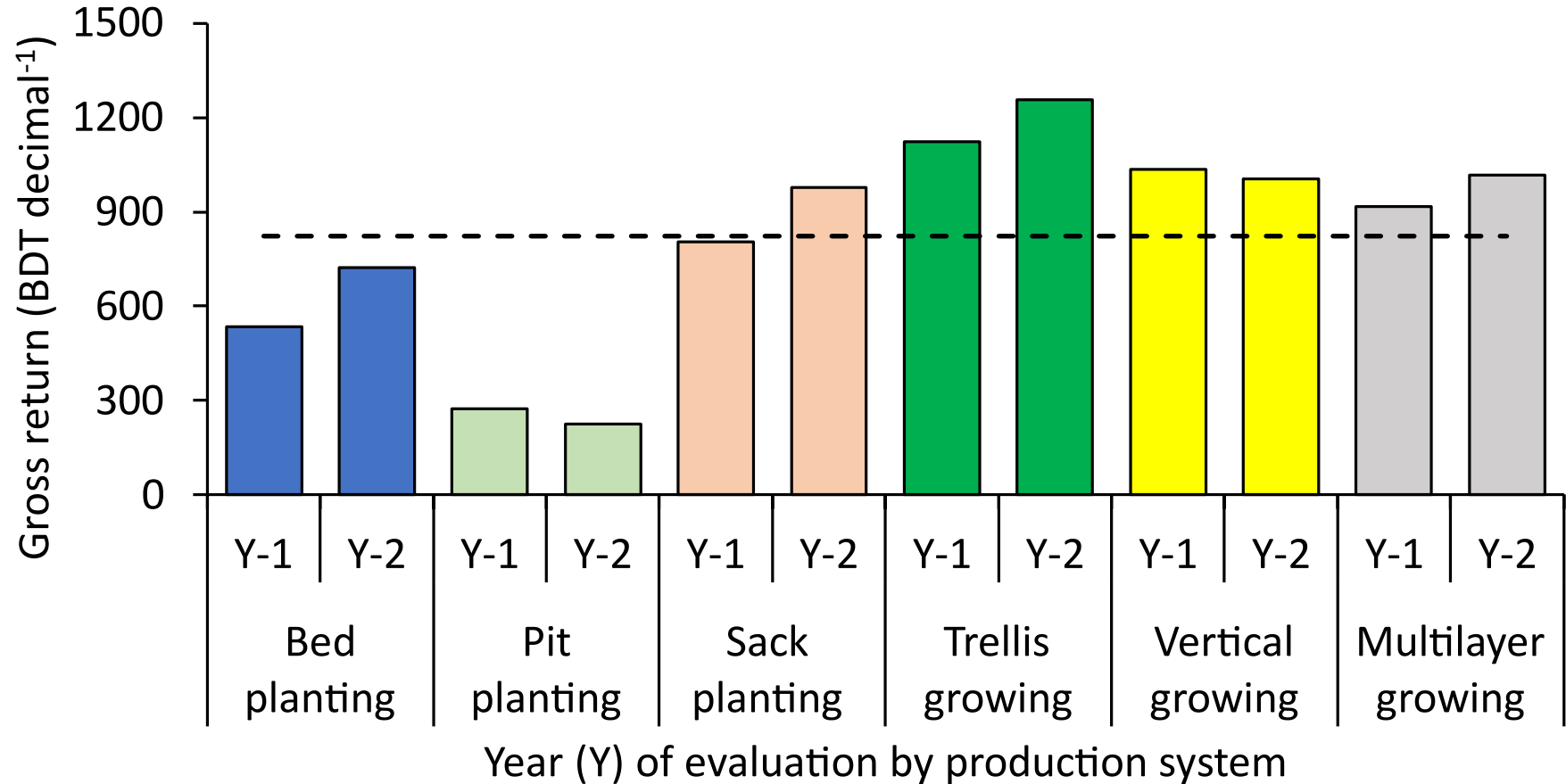




Year-1 (2020) and Year-2 (2021) Data:

Gross Profit Margin

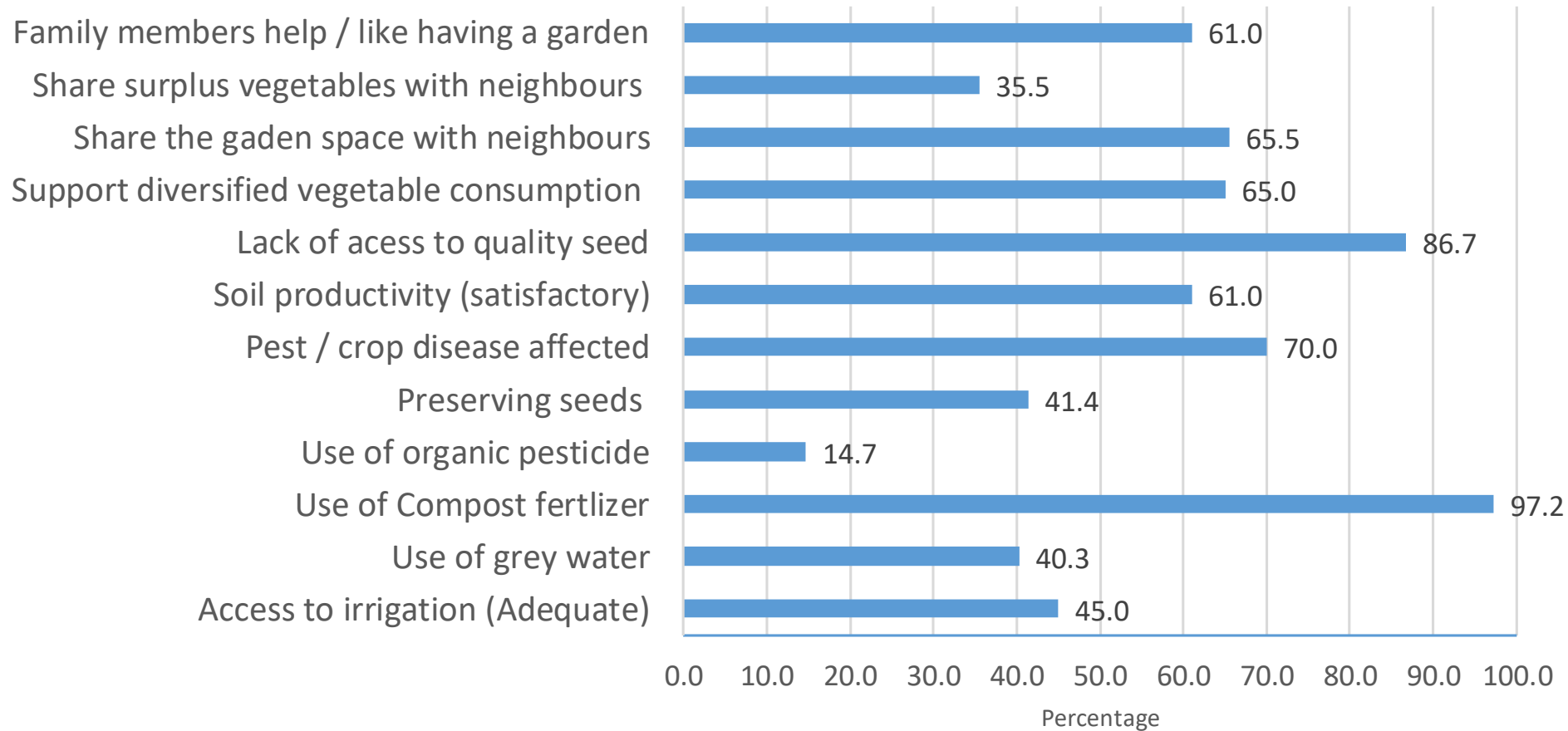
- - - Average across production system and years





Social Factors and Satisfaction

Facilities and Social Impacts





Food and Agriculture
Organization of the
United Nations

Acknowledgement



World Vision



CONCERN
worldwide

brac



SAFEPLUS
Safe Access to Fuel and Energy



Food and Agriculture
Organization of the
United Nations



Thank You

Partners Update

Partners Update

- SHED: Abdul Mannan from SHED shared his organization update. SHED has started to implement a new projection on enhancing income generating activities of FDMN at Bashan Char by their own organization fund. The project consists of three main components. The component one is developing the Entrepreneurship and business promotion skills of existing 30 FDMN traders, Component two is pilot scheme of improvised country chicken rearing covering a cluster and the component tree is pilot scheme of phone-based agroforestry, fish culture and BRAC clearing covering two cluster. So now our team is at Bashan Char and working with additional RRRC and CiC for selecting beneficiaries and area.

- Helvetas: EFSN project has been completed last month. and Helvetas will start new project in Camp and host community at Ukhiya and Teknaf Upazial, Project name is SHINE
- Community Partners International (CPI): CPI is interested to donate 92 showing machines for the FSS partners who are already working in the camps. So if you are interested to receive the sewing machines FSS requested to fill in the request form and respond to the email. There is no obligation required. It's only received this machine from CPI and the reporting will be as usual, so no additional reporting is required. So please respond to that email if you are interested to receive these sewing machines

AOB

- Megumi Shuto from JICA, provided thanks to FSS for introducing her to all FSS partners during the meeting. She provided short brief on newly started new JIKA project on Fishery and Livelihood Enhancement in coastal area over the Bay of Bengal
- Update on FSS files: all files from 2021 have been archived [here](#)
- Next FSS coordination meeting modality is hybrid, (in-person in ISCG conference room or online)

Thank you all!

Next FSS coordination meeting

19 April 2022, 11:00-12:30

Coordinator: **Pramila Ghimire**, 01713456737, pramila.ghimire@wfp.org

Co- Coordinator: **Hossain Rahman Raiyan**, 01844559309, hossain.raihan@brac.net

Deputy Coordinator: **Anna Rzym**, 01730309838, anna.rzym@wfp.org

Information Management Officer (IMO), **Zolboo Bold-Erdene**, 01313097855, zolboo.bold-erdene@wfp.org

Information Management Associate (IMA), **Neyamul Akhter**, 01313770424, neamul.akhter@wfp.org