



# Food Security & Livelihoods Coordination Meeting

22 February 2022

Cox's Bazar, Bangladesh



**COX'S BAZAR  
FOOD SECURITY  
SECTOR**

Photo: ISCG / Saikat Mojumdur

## Action Points

### COVID 19 Restriction

Partners adhere to RRRC message on Covid-19 restriction | [To comply with government decisions in light of COVID-19 pandemic situation. No-432](#) | 6 February 2022

### FSS JRP Update

JRP process is ongoing: Currently JRP 2022 is being reviewed by the MoFA and MoDMR, Dhaka. JRP 2022 will most likely be launched in early March 2022.

Process of next 2023 JRP will start around August 2022.

31 organizations (53 individuals) in attendance ;		
AAB	ILO	SHUSHILAN
ACID/VOCA	IOM	SS
AMAN	IVY Japan	UNHCR
BRAC	ISCG	UNICEF
CAB	MUKTI	UNWOMEN
CNRS	PI	VSO
DRC	Pop Council	WFP
FAO	RDRS	WR
FIA	RIC	WVI
FIVDB	SCI	
Helvetas	SHED	

# Action Points

## FSS Update

- FSS to revise and share the Strategic Advisory Group (SAG) committee TOR and guidance of FSS Co-Coordination Selection to partners by 3 March 2022
- FSS to share monthly and interactive dashboard by 3 March 2022
- FSS organize partners' site visit follow-up workshop on 23 February 2022
- FSS to organize field visit on Self-Reliance NFI Production in camp on 9 March 2022

31 organizations (53 individuals) in attendance ;		
AAB	ILO	SHUSHILAN
ACID/VOCA	IOM	SS
AMAN	IVY Japan	UNHCR
BRAC	ISCG	UNICEF
CAB	MUKTI	UNWOMEN
CNRS	PI	VSO
DRC	Pop Council	WFP
FAO	RDRS	WR
FIA	RIC	WVI
FIVDB	SCI	
Helvetas	SHED	

# Action Points

## FSS Update

- FSS partners who are interested in facilitating their site for monthly visitations need to register by following the below Registration link.

[“April 2022”](#)

- FSS to develop service map and dashboard for the livestock initiatives based on the inputs received from livestock partners by 15 March 2022

31 organizations (53 individuals) in attendance ;		
AAB	ILO	SHUSHILAN
ACID/VOCA	IOM	SS
AMAN	IVY Japan	UNHCR
BRAC	ISCG	UNICEF
CAB	MUKTI	UNWOMEN
CNRS	PI	VSO
	Pop Council	WFP
DRC		
FAO	RDRS	WR
FIA	RIC	WVI
FIVDB	SCI	
Helvetas	SHED	

# Action Points

- Interested partners to fill out the [Compost Request Form](#) to acquire compost from WASH sector, [Technical Notes - Composting Method | Humanitarian Response](#)

## Partners Capacity Building Initiatives

- FSS to organize and provide Power BI training to partners IM colleagues on 24 February 2022, Training modality is online, and language is English

31 organizations (53 individuals) in attendance ;		
AAB	ILO	SHUSHILAN
ACID/VOCA	IOM	SS
AMAN	IVY Japan	UNHCR
BRAC	ISCG	UNICEF
CAB	MUKTI	UNWOMEN
CNRS	PI	VSO
	Pop Council	WFP
DRC		
FAO	RDRS	WR
FIA	RIC	WVI
FIVDB	SCI	
Helvetas	SHED	

# Action Points

## SDTWG

- Partners to submit Skills Development Mapping Questionnaire information: <https://enketo.unhcr.org/x/tM4eN5ct> and SDTWG Mapping Questionnaire Guidance Note Here : <https://drive.google.com/file/d/1Y19HYOS-tj9KhyPI2XM4AMVtoQaHIDis/view?usp=sharing> by 24 February 2022

31 organizations (53 individuals) in attendance ;		
AAB	ILO	SHUSHILAN
ACID/VOCA	IOM	SS
AMAN	IVY Japan	UNHCR
BRAC	ISCG	UNICEF
CAB	MUKTI	UNWOMEN
CNRS	PI	VSO
DRC	Pop Council	WFP
FAO	RDRS	WR
FIA	RIC	WVI
FIVDB	SCI	
Helvetas	SHED	

# FSS Upcoming Events



- Next SDTWG Meeting | 28 February 2022 | 3:00 – 4:00 pm
- EETWG monthly meeting | 1 March 2022 | 15:30-17:00
- Livestock Partners Monthly Meeting | Wednesday, 2 March 2022
- FSS Bi - Weekly Coordination Meeting | Tuesday 8 March 2022 from 11:00 – 12:30

31 organizations (53 individuals) in attendance ;		
AAB	ILO	SHUSHILAN
ACID/VOCA	IOM	SS
AMAN	IVY Japan	UNHCR
BRAC	ISCG	UNICEF
CAB	MUKTI	UNWOMEN
CNRS	PI	VSO
DRC	Pop Council	WFP
FAO	RDRS	WR
FIA	RIC	WVI
FIVDB	SCI	
Helvetas	SHED	

# Agenda

## Meeting agenda

- FSS Updates
- JRP Update 2022
- Presentation:
  - EETWG: Sustainable Land Management and Environmental Rehabilitation (SuLMER) of Shoa Ma'r Jhiri Watershed Area in Camp 1W & 2W in relation to Food Security and Livelihood activities
- Partners' Updates
- AOB



# FSS updates

## Updates on COVID 19 restriction

---

- Not received any official communication
- Continue following the safety measures: using mask, physical distancing, hand washing

# FSS Updates

---

- **Strategic Advisory Group (Committee)**
  - ✓ Election
  - ✓ Share a TOR and more information early next week
  - ✓ Invite for nomination next week
  
- **FSS Guidance on Co-Coordinator Selection**
  - ✓ Includes process of nomination, voting , tenure etc.
  - ✓ Share a draft guidance next week
  
- **Country Cluster Performance Monitoring Survey (CCPM)**
  - ✓ 77% response rate for CXB (overall 44%)
  - ✓ Survey closed
  - ✓ Awaiting results

# FSS JRP – 2022 and 2023 updates

## **JRP 2022**

- JRP process is ongoing:
  - ✓ Currently with MoFA and MoDMR, Dhaka
  - ✓ JRP Launch – Early March

## **JRP 2023**

- ✓ Process to start around August
- ✓ No need assessment

# Information Management Update

## IM Updates

---



- IM team received the 5W and CfW submissions from partners – thank you to all partners for the timely reporting!
- Back to early-month information request starting March
- **PowerBI Training** – this Thursday, 24 February 10am-1pm
- Goodbye to Ajmerry Hossain (IMO), for all your IMO needs please only contact:
  - Zolboo Bold-Erdene, [zolboo.bold-erdene@wfp.org](mailto:zolboo.bold-erdene@wfp.org)
  - Neyamul Akhter, [neamul.akhter@wfp.org](mailto:neamul.akhter@wfp.org) (Mobile: 01313770424)

# Livelihoods and Self-Reliance



# FSS joint field visits

Aggregation Centers and Farmer Groups in Teknaf on 9 February 2022:

1. WFP/Shushilan
2. UNHCR/CNRS
3. DCA
4. FAO/Shushilan

Representatives of 14 different organizations and the Department of Livestock Services (27 participants)

Picture 1 (top right): Farmer Group in Teknaf, DCA

Picture 2 (bottom right): Aggregation Center in Teknaf, UNHCR/CNRS



# FSS joint field visits

Aggregation Centers in Ramu and Ukhiya on 10 February 2022:

1. FAO/Shushilan
2. WFP/RIC
3. Helvetas/Shushilan
4. VSO/Shushilan

Representatives of 12 different organizations and the Department of Agricultural Extension (25 participants)

Picture 1 (top right): Aggregation Center in Ukhiya, Helvetas/ Shushilan

Picture 2 (bottom right): Sales Center in Ramu, VSO/Shushilan



# FSS joint field visits

Total number of organizations 19:

- 4 UN (FAO, UNDP, UNHCR, WFP)
- 8 INGO (BBC Media Action, Danish Church Aid, Helvetas, IVY Japan, Plan International, Solidar Suisse, Solidarites International, VSO Bangladesh)
- 7 NNGO (BRAC, CNRS, Meghna Social Health & Development Foundation, Mukti Cox's Bazar, Nowzuwan, RIC, Shushilan)



Farmers, FSS partners and the Deputy Director of the Department of the Agricultural Extension in front of Aggregation Center in Ramu, FAO/Shushilan

# FSS Partners' Site Visit | Follow up workshop



**Date:** 23 February 2022

**Location:** Long Beach,  
Cox's Bazar

**Number of participants:**  
35 from 16 different  
organizations  
(UN, INGOs, NNGOs)

Session I	Good practices and lessons learned: <ol style="list-style-type: none"><li>1. Scope of Aggregation Centres (Assessment criteria, objectives)</li><li>2. Organizational capacity development and linkage with DAE and other line department (sustainability of an Aggregation Centre and Farmer groups)</li><li>3. Additional services (e.g., technical expertise, machineries' sharing, money saving, transportation, group activities)</li><li>4. Multiple organizations in the same geographic area – cooperation opportunities</li></ol>
Session II	Market linkages: <ol style="list-style-type: none"><li>1. Price setting mechanism</li><li>2. Order and delivery system</li><li>3. Challenges</li><li>4. Opportunities (functional good practices)</li></ol>
Session III	Improved production: <ol style="list-style-type: none"><li>1. Year-round vegetable cultivation</li><li>2. Governmental network of existing services to support farmer groups and aggregation centres</li></ol>
Session IV	Way forward

### 9 March 2022: Self-Reliance NFI Production (Camps):

Location	Activity type (e.g. handicraft production)	Organization	Implementing Partner
Camp 4ext	Menstrual Hygiene Management Products	UN Women	ActionAid Bangladesh
Camp 4	Handicrafts and mask production	PRANTIC	PRANTIC
Camp 5	Eco-friendly jute products production centre	UNHCR	NGO Forum for Public Health
Camp 15	Circular food Assistance project (Upcycling food packaging to usable products)	WFP	Cordaid (former ICCO)

[Link](#) to register for the field visit in March

**If your organization would like to facilitate next sites, please register through the following link: [April](#) (Livelihoods NFI Production in the Host Communities)**

## Compost – WASH Partners

FSS Partners have been connected with MRFs (Material Recovery Facility) producing compost in the camps.

If your organization is implementing homestead gardening activities in the **camps** and would like to receive compost from WASH sector partners, please contact FSS team.



### Livestock

- In depth online webinar has organized for latest 5W reporting template on 8th February for all partners including livestock.
- Re-Scheduled Next Monthly Meeting: Wednesday, 02 March 2022 at 1100-1200 hrs.

# Skill Development TWG updates



# Skill Development Working Group



Skills Development Technical Work Group (SDTWG) is a multi-sectoral technical working group aiming at building synergies amongst stakeholder efforts and initiatives across all sectors engaging in Skill Development in the refugee camps and host community.

SDTWG's main objective is to establish an effective network with the relevant partners and agencies to collect quality information regularly and in a timely manner; to **ensure cooperation** among different partners to avoid duplication, share lessons learnt, build synergies and ensure a harmonized approach.

## Skills Development Technical Working Group – Contacts of Co-Chairs

- 1. Joseph Falcone**      Food Security Sector/Skills Development focal point  
[joseph.falcone@wfp.org](mailto:joseph.falcone@wfp.org) WFP work mobile: +8801730309883  
WhatsApp: +8801531339092
- 2. Ashraful Rahman**      Education Sector/Youth Working Group co-chair  
[mdrahman@unfpa.org](mailto:mdrahman@unfpa.org)  
mobile / WhatsApp: +8801760748034
- 3. Immad Ahmed**      Education Sector/Youth Working Group co-chair  
[immad@hap.consulting](mailto:immad@hap.consulting)  
mobile / WhatsApp: +8801729748252

## **Skills Development Activities Mapping: Deadline Thursday, 24 February 2022**

- Requesting all partners with Skills Development activities to input their information

Purpose of this mapping exercise is to **gather and form a comprehensive overview of skills development activities** in both the Rohingya camps and the host communities. This is a one time exercise to **inform the Skill Development TWG of gaps and needs** for coordination purposes.

If interested in SDTWG mailing list, reach out Zolboo Bold-Erdene | FSS IMO – [zolboo.bold-erdene@wfp.org](mailto:zolboo.bold-erdene@wfp.org)

**Next SDTWG Meeting will be held on Monday, 28 February 2021**

# EETWG updates

# Energy & Environment Technical Working Group updates

---



## About:

The EETWG is a multi-sectoral technical working group which aims to build synergies amongst stakeholder efforts and initiatives across all sectors with a special focus on identified linkages between the Food Security, Site Management and Shelter/NFI Sectors. The group is currently made up of 37 partner organizations implementing energy and environmental programmes in the Rohingya Refugee Camps and Host Communities of Cox's Bazar.

Key activities include solar lighting, lightning protection, cleaner cooking, solid waste management initiatives including up/recycling, plantation/reforestation, land stabilization through nature-based solutions, tree nursery management/establishment, watershed management, eco-friendly construction and wildlife management. EETWG members are also active in conducting environmental and energy impact assessments and research.

## Resources:

- EETWG google drive: <https://drive.google.com/drive/u/2/folders/1RC6UPbss3tYtZ1etWbqZwRhU6iltNcap>
- Old EETWG google drive (pre-2021): [https://drive.google.com/drive/u/0/folders/1c3tSPMk8cEI-F\\_OOy7oo9EnxclZEuON](https://drive.google.com/drive/u/0/folders/1c3tSPMk8cEI-F_OOy7oo9EnxclZEuON)

**Contact person:** Fenella Henderson-Howat, Interim Coordinator, [Fenella.Hendersonhowat@wfp.org](mailto:Fenella.Hendersonhowat@wfp.org)



# Energy & Environment Technical Working Group updates

---



## EETWG Updates:

- **2022 Plantation Season** – shapefiles due end-February
- Updating **solar lighting guidance** with IOM and UNHCR

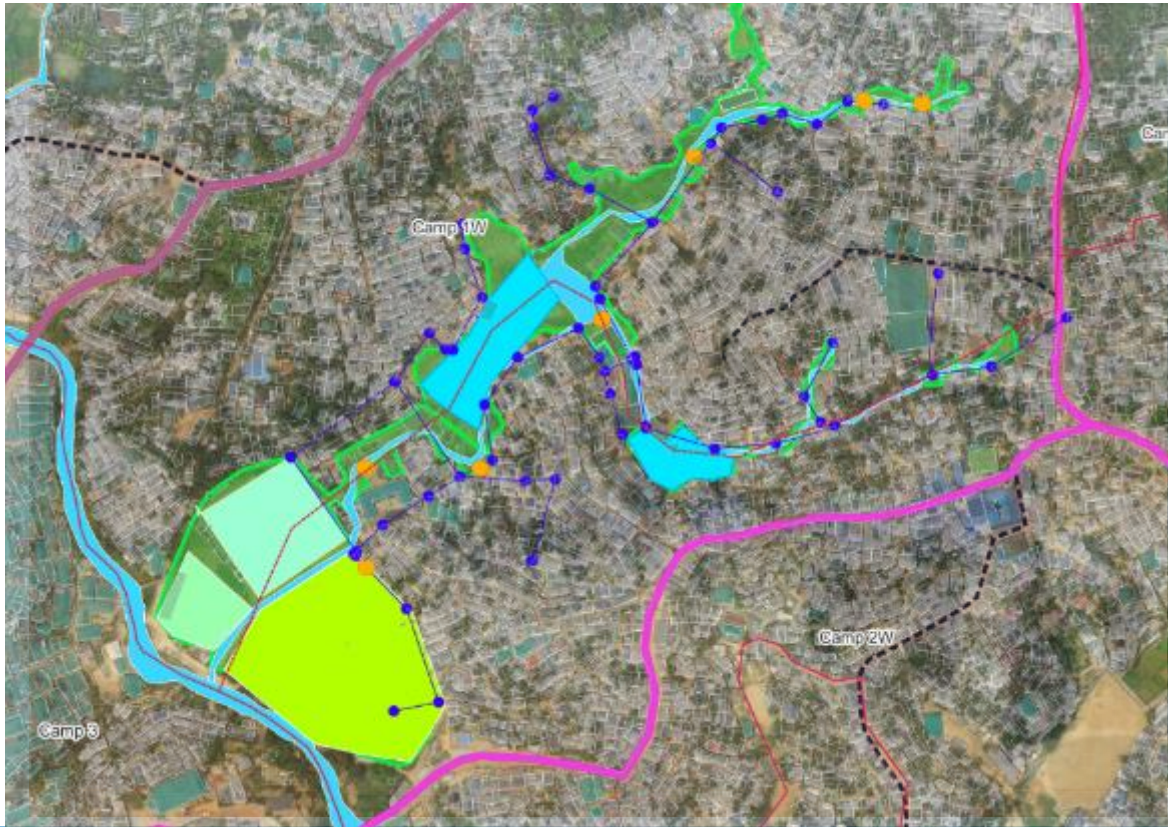
## Upcoming Events/Meetings:

- **Energy Field Visit** - 28 February
- **NEAT+ practical training** - date TBC
- **EETWG meeting** -1 March (15:30-17:00) – invitation to follow



EETWG: Sustainable Land  
Management and Environmental  
Rehabilitation (SuLMER) of Shoa Ma'r  
Jhiri Watershed Area in Camp 1W &  
2W in relation to Food Security and  
Livelihood activities

# Sustainable Land Management and Environmental Rehabilitation (SuLMER) in Camps 1W & 2W in relation to Food Security and Livelihood activities FSS Coordination Meeting February 22<sup>nd</sup>



# Objectives and Approach

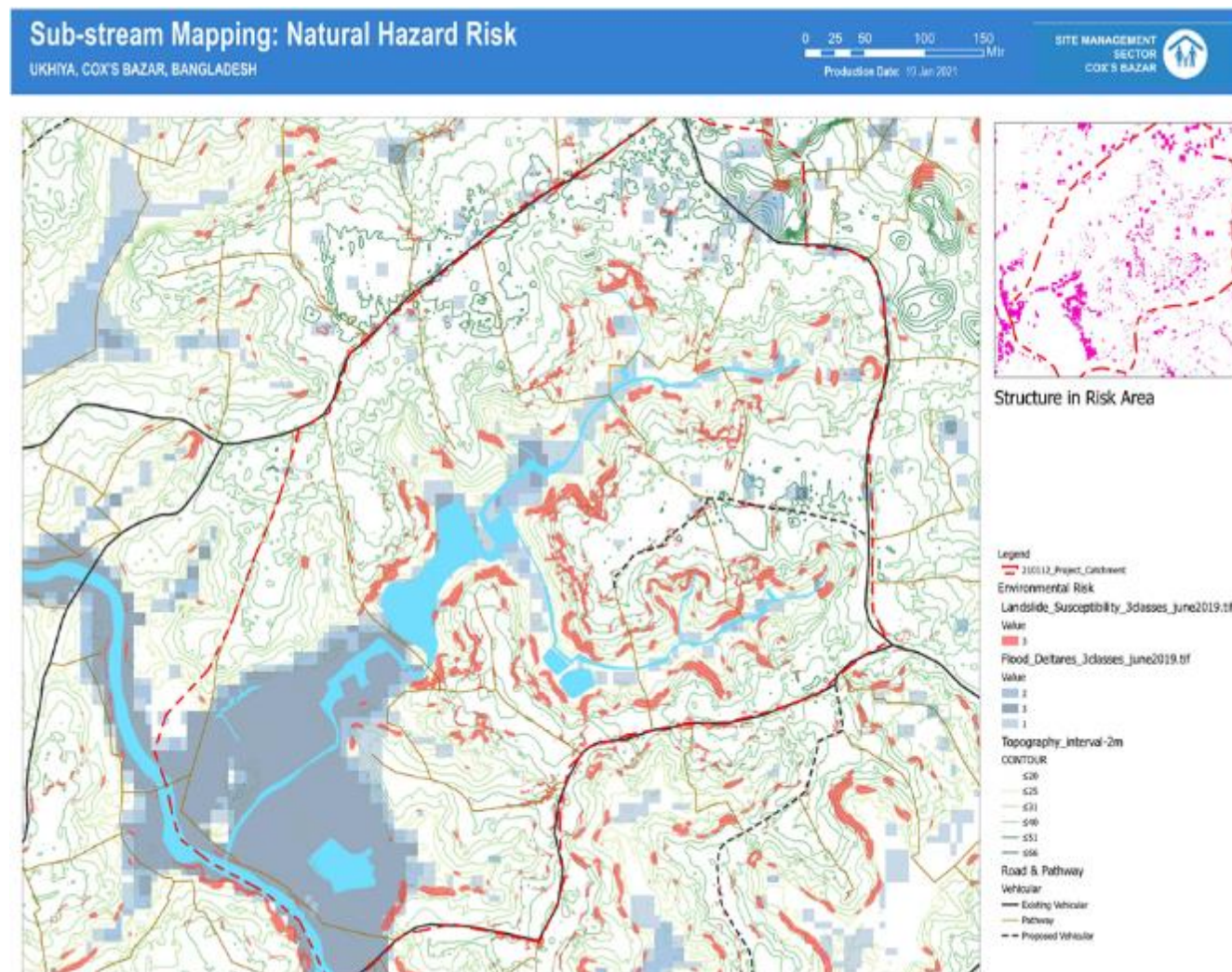
The “**Sustainable Land Management and Environmental Restoration**” project has the aim to reduce negative environmental impacts associated with refugee camps and to protect the refugees and the host communities by improving their health, well-being and livelihoods.

- **Spatial planning / Blue-Green Network / Macro Settlement Plan (MSP) / Watershed Management Plan**
- **Integrated / holistic approach** (rehabilitation not emergency oriented)
- **Using Nature based Solutions (NbS)**
- **Community engagement** and empowerment to create ownership
- Promoting **social cohesion** among refugees and HC members
- **Intra and inter unit / sector approach** in coordination with EETWG
- **Coordination and partnerships** (GoB, Sectors, FAO, SMEP, WFP, IOM)

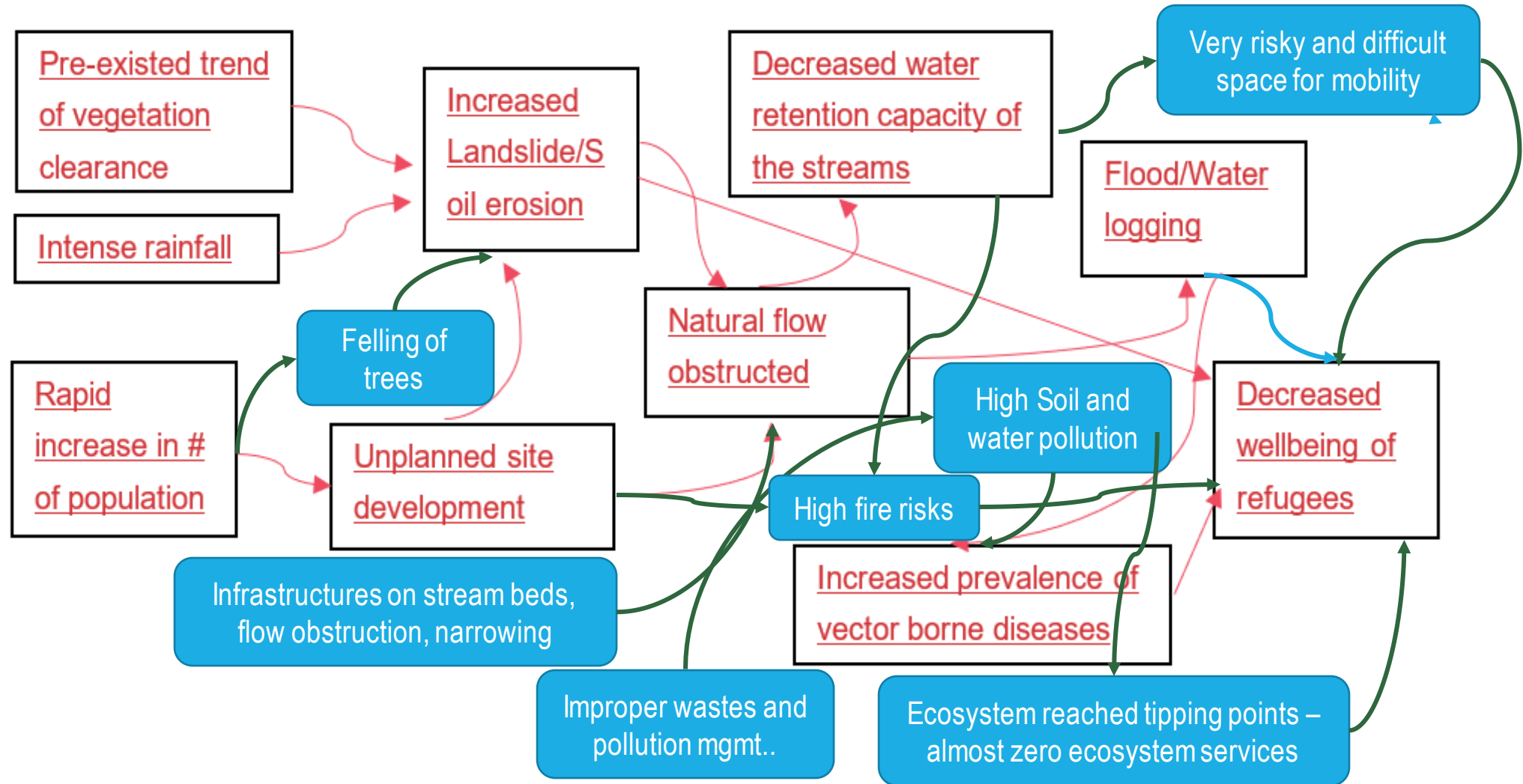


# Overview & Background Information

- **Shoa Ma'r jhiri watershed** area in camps 1W & 2W; about 1 km long
- **Total area size:** 24 ha (1W blocks E/F/G and 2W block D)
- **Total population (pilot area only):** 17,300 refugees and 430 host community members
- One of the most **densely populated camps** (density 74,000/sqkm)
- About **100 HC households** are living together with the refugees



# Results and Findings (Disaster Risk) & System Linkages (dynamic)



# Existing Situation in the Watershed



Toilet on the Streambed



Tube-well on the Streambed



Dustbin on the Streambed



FSM on the Streambed



Learning Center on the Streambed



Shelter on the Streambed



Shelter on the Streambed

# Agricultural Livelihood Activities

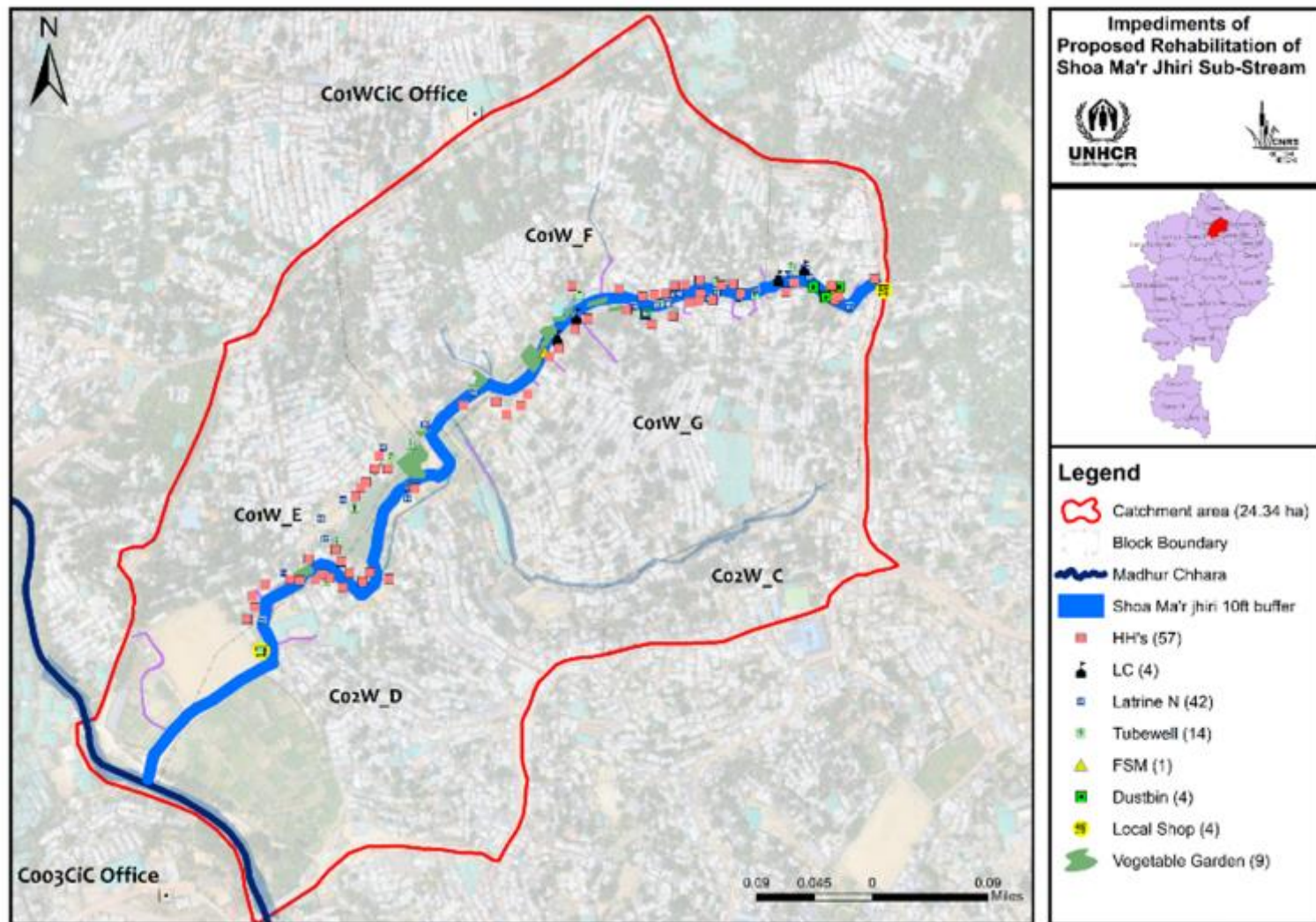


# Challenges

- **Relocation** – of refugee houses and other common facilities to safer areas within or outside the SuLMER area - support/endorsement from the Government authorities and stakeholders is required
- **Allocation of funds** – the magnitude of the operation will require coordinated funding from multiple sources
- **Non-coordinated implementation** by agencies working within SuLMER area (working in silos) is further impacting the natural ecosystem and the population
- **Time specificity** – Various activities (e.g. planting) are time sensitive and should be accomplished in time (considering fund flows and approval from authorities)
- **Frequently changing CiCs and supporting staff** – consultation process had to restart

# Relocation of Shelters and Communal Infrastructure

- Relocation of individual shelters (about 60)
- Decommissioning of Faecal Sludge Mgmt. (FCM) structures (5)
- Decommissioning and relocation of other WASH facilities & dustbins (11 + 8)
- Relocation of Learning Centres (5)
- Relocation of religious facilities (4)
- **Relocation of vegetable gardens**



# CNRS Rehabilitation of Tributaries Phase I (2021)

During the phase I, three micro-streams or tributaries have been rehabilitated based on the design using Nature based Solution (NbS)

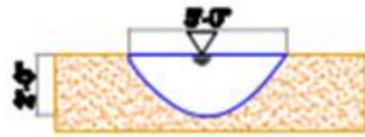


Fig: Section Existing Micro Stream

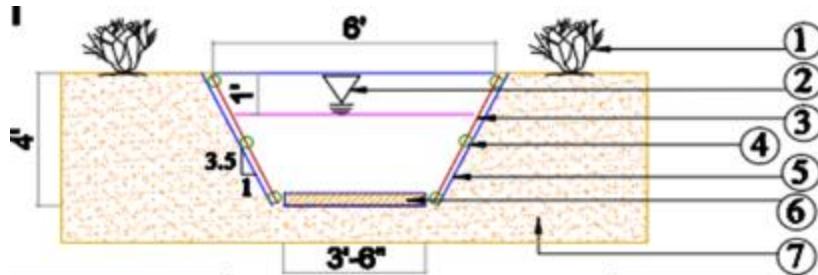
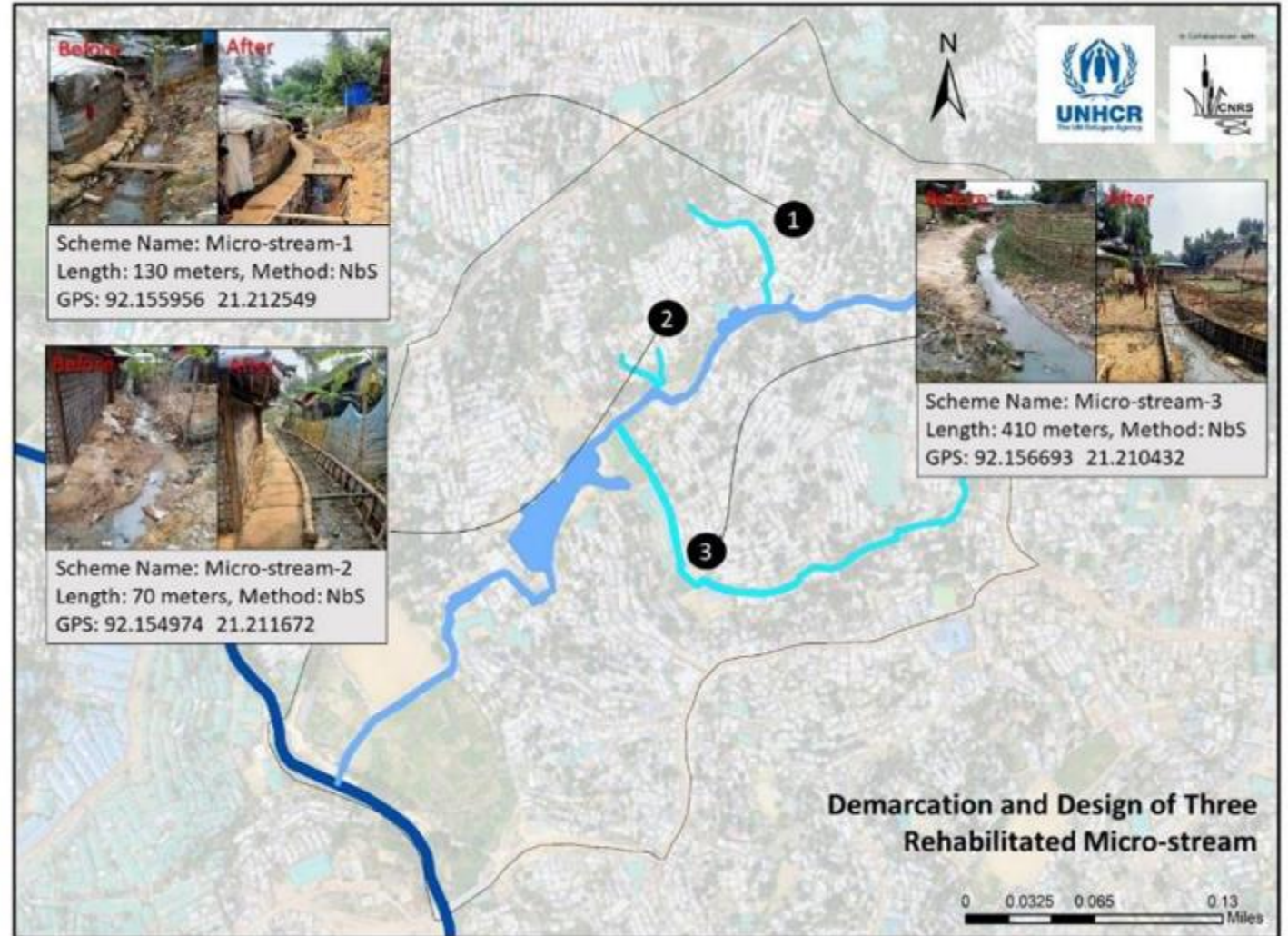


Fig: Section Proposal Micro Stream

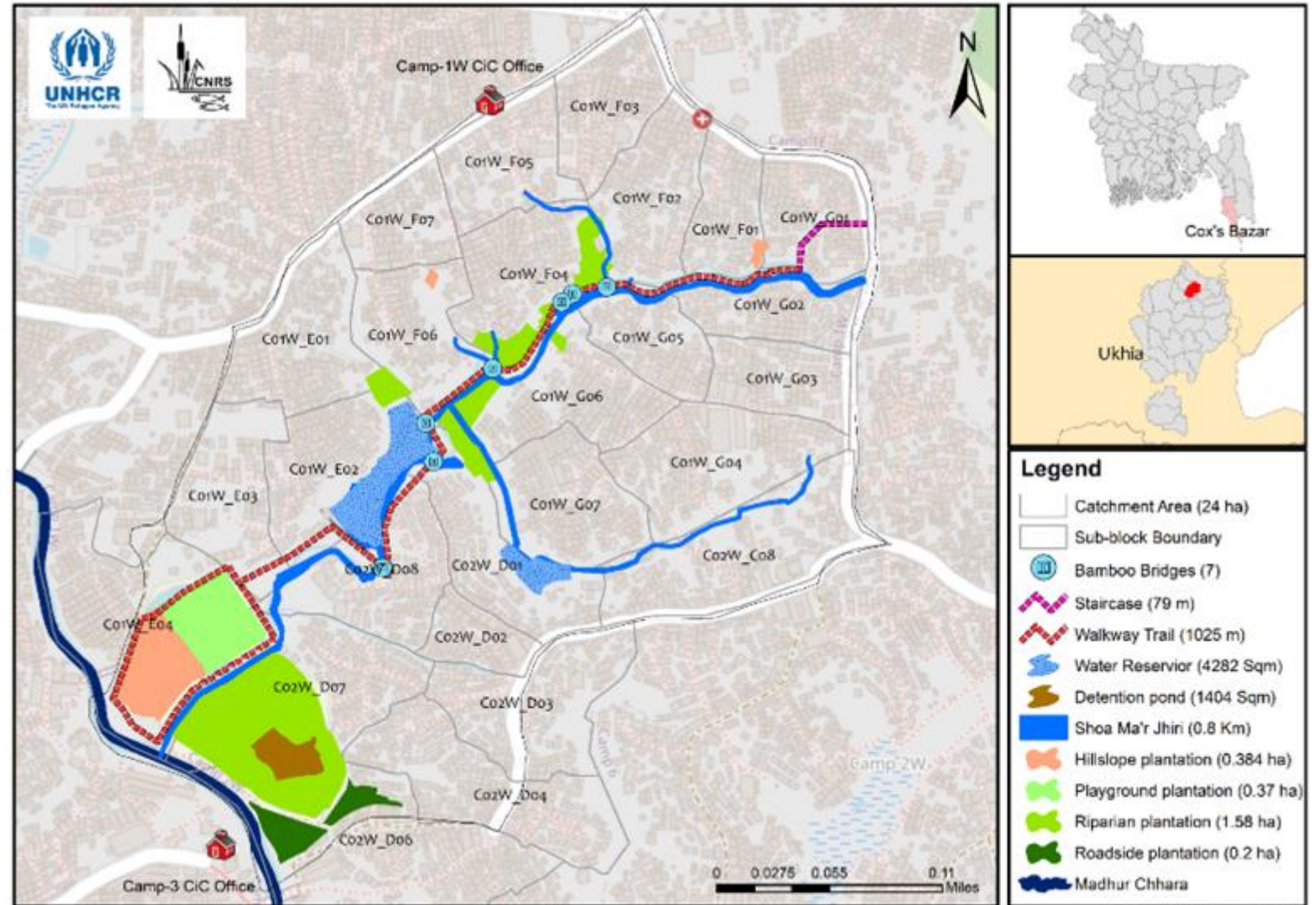
- ① - Vetiver Plants
- ② - Water Level
- ③ - Bamboo Log Avg. Dia 3"-4"
- ④ - Bamboo Twice Batten 1/2 dia
- ⑤ - Geomat layer
- ⑥ - Geobag matting with Soil
- ⑦ - Ground Layer



# CNRS Comprehensive Rehabilitation Plan for Phase II

## Upcoming Activities:

- Stream Rehabilitation
- Walkway construction
- Detention pond construction
- Hillslope plantation
- Riparian Plantation
- Roadside Plantation
- Water reservoir construction
- Bamboo Bridge construction





# Possible Food Security & Livelihood Activities

- **Conservation agriculture** in alignment with the environmental plantation activities (following the EETWG guidelines for home gardening); **multi-layer vegetable cultivation; pond aquaculture**
- Special focus on **Youth Groups** (skills development, vocational training & environmental education)
- **Cash for Work** for rehabilitation activities (refugees & HC members)
- **Specific livelihood activities for the host community** (cash grants for start-ups) → assessment results
- **Specific skills development and self reliance activities for vulnerable refugee population** → assessment results
- Establishment of **multi-purpose/multi-agency skills development centers**

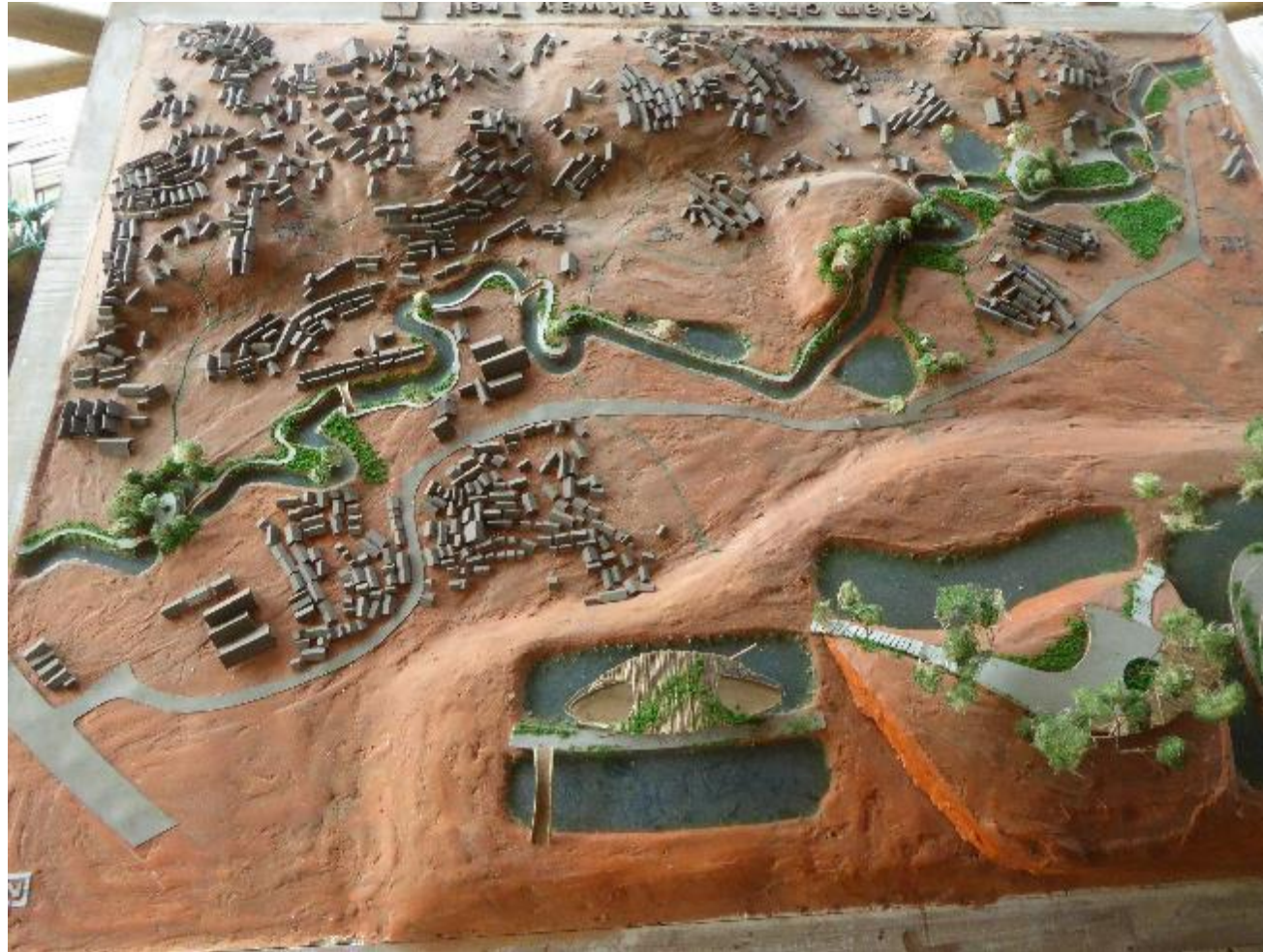
# Next Steps

- Finalizing **Implementation/Action Plan** for 2022
- Estimated **Budget** for each UNHCR Sector/Unit for 2022
- Ongoing presentations in relevant **Sector Coordination & HoSOG Meetings** and **Sector Coordinators Field Trip**
- Updated **Stakeholder Mapping** for each Sector & **Skills Development Assessment**
- **Orientation Workshop** with CCiCs and RRRC
- **Relocation Process** (Participation CiCs & Beneficiaries)
- **Implementation** of planned **Activities** in Phase II

# Coordination with FSS and Partners

- Assist in **updating** the existing **stakeholder mapping**
- Assist in **mapping of ongoing** and **planned projects** and activities to ensure coordination and avoid overlapping
- Assist in **prioritizing projects** for re-planning, re-design and rationalization and agree on a single implementation/work plan for SuLMER
- To advise actors to **respect** the **existing risk maps** (e.g. flood zones, landslides) and **guidelines** for any planned implementation
- Agree on a **participatory planning strategy**
- Assist in the **multiscale coordination** so that **allocated funds** for activities in Camps 1W and 2W are going along the **agreed implementation plan**

# Any Questions?



# Partners Update

- FAO host community food production support: FAO provided 70 metric ton of Bro rice seed (Variety BRRI dhan-28) to 3536 farmers in Cox's Bazar Sadar, with financial support from CANADA.
- FAO has plans to distribute summer vegetable seeds to 20,000 poor farmers in host community located in Ukhiya, Teknaf, Cox's Bazar Sadar and Ramu sub district, (contribute to the home state and commercial vegetable production in host community).

- FAO plans to distribute to 100 Metric ton of BRRI dhan to host community farmers and targeted number is 10,000, Agriculture department and FAO will finalize the list of targeted beneficiaries

AOB



- FSS representative participation in Camp coordination meeting
- FSS Information Management Officer, Ajmery Hossain is leaving WFP and will join FAO for a new assignment in Rome, Italy.
- Next FSS coordination meeting modality is hybrid, (in-person in ISCG conference room or online)