

Zimbabwe: Monthly FS Response Dashboard - Food Assistance

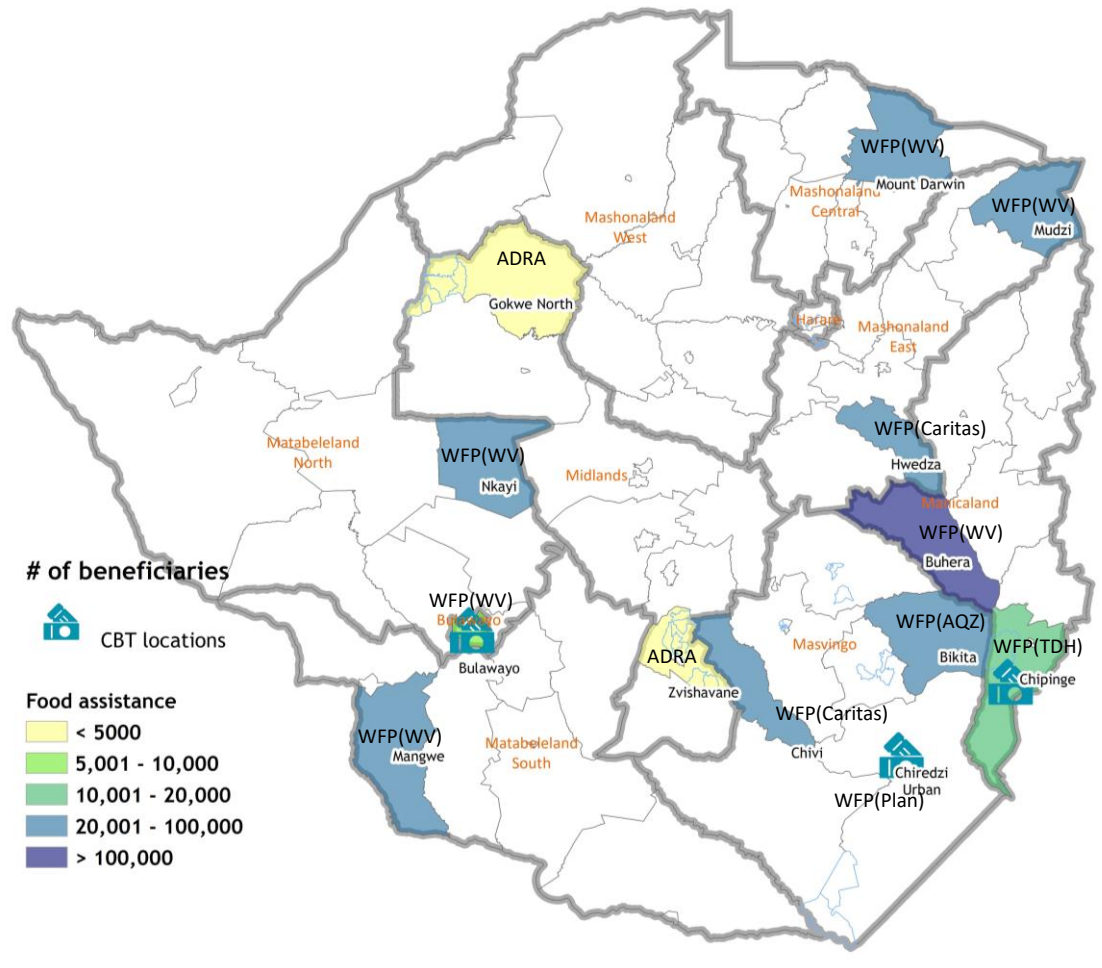
December 2022



The ZIMVAC report of 2022 projected that 3.8 million individuals shall be food insecure at the height of the lean season (January to March). Government and development partners have collaborated to cover 100% of the food-insecure population. While the government is covering the bulk of the caseload, this report reflects only the contribution of the food security cluster.

Collectively, in December, FSLC partners reported delivery of food assistance to 597,375 individuals (including refugees) through both cash-based transfers and in-kind interventions. The average value of the cash transfer per person was US\$12 and enabled vulnerable urban and rural households to supplement their food requirements in December. The basic food basket for in-kind interventions had cereals, pulses, oil and corn-soya blend where nutritional interventions were necessary. The FSLC will continue to deliver assistance up to the end of the lean season.

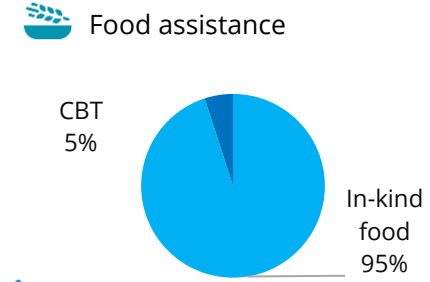
COUNTRY RESPONSE MAP



December Reporting Organizations/Implementing Partners

ADRA Zimbabwe, Aquaculture Zimbabwe, Caritas, Plan International, Terre des Hommes Italia, World Food Programme, World Vision. ZRCS is supporting an additional 850 HH under CBT in Mwenezi.

RESPONSE



In-kind food assistance: 565,318
 CBT (urban + rural areas) : 32,057



KEY PARTNERS

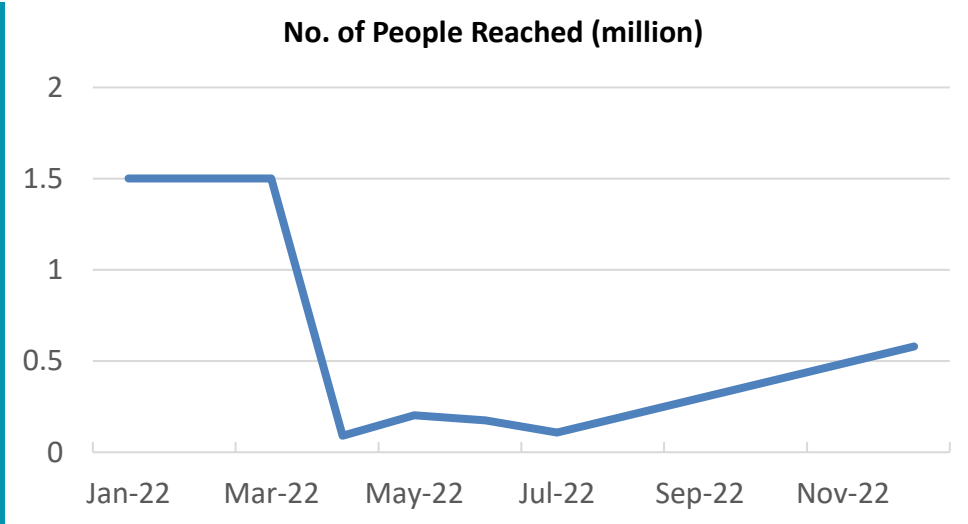
UN/NGO PARTNERS



PEOPLE REACHED BY PARTNERS

Organisation	People Reached
WFP	594,411
ADRA	2,964

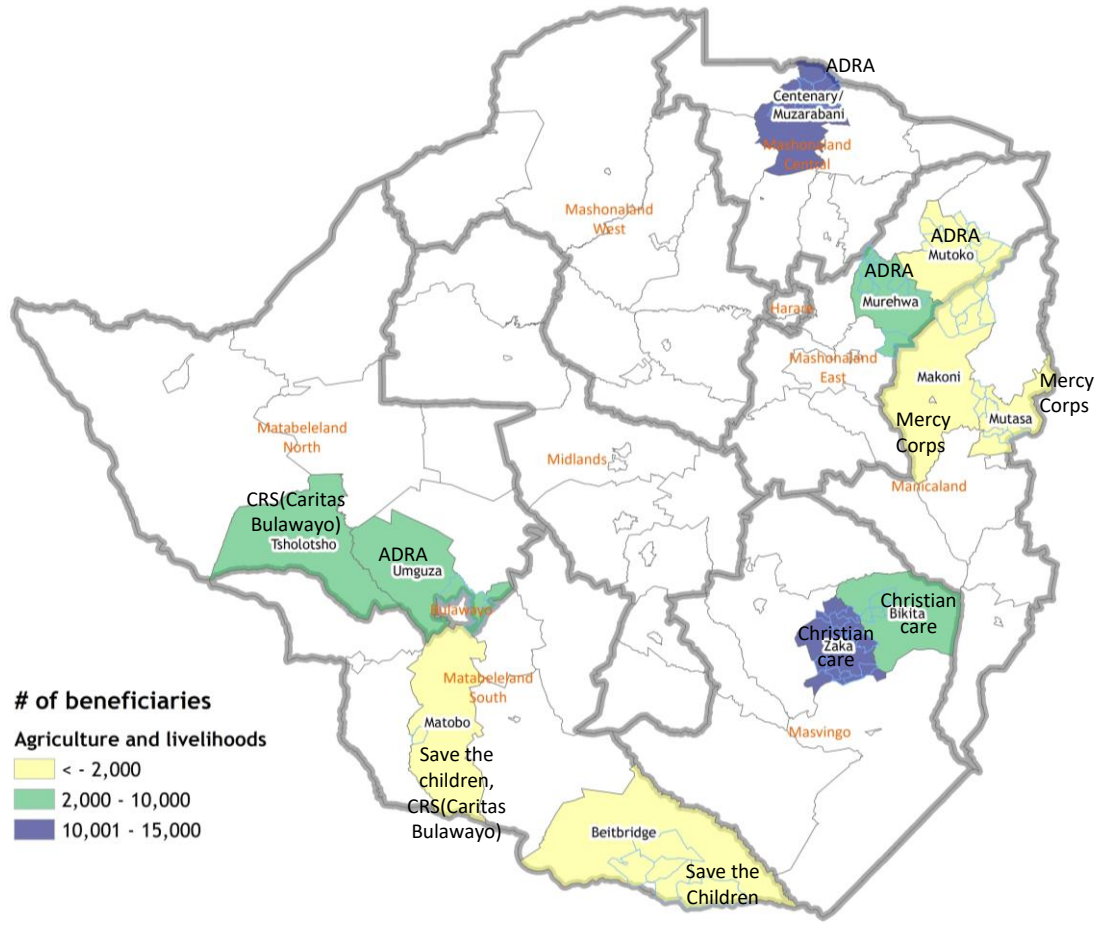
PEOPLE REACHED TREND



The Government data is included from January to March 2022

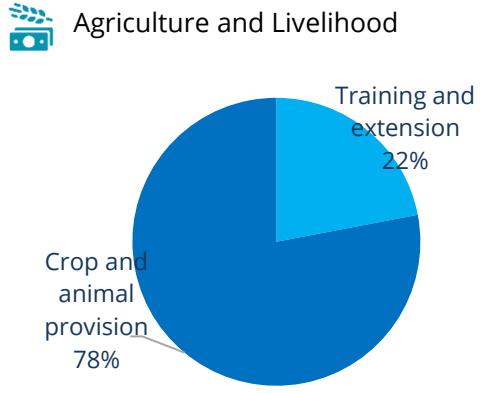
Concurrently, 70,700 beneficiaries were supported with agricultural and livelihood assistance. This included the provision of agriculture or livestock inputs to households while working on asset rehabilitation/construction with 18,095 participants, provision of drought-tolerant seeds for cereals (maize, small grains and legumes) as well as fertilisers (and related trainings) that benefited 14,120. Additionally, 15,220 farmers benefited from training to support crop pest management, post-harvest handling, storage and processing while the remaining 23,265 participants received small livestock (restocking, improved breeds) and other inputs/materials (e.g. hatcheries) (and related training)

COUNTRY RESPONSE MAP

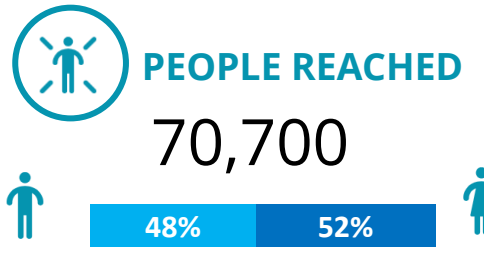


December Reporting Organizations/Implementing Partners
 ADRA Zimbabwe, Caritas Bulawayo, Catholic Relief Services, Christian Care, Mercy Corps, Save The Children

RESPONSE



Crop and livestock inputs : 55,480
 Extension and advisory services: 15,220



KEY PARTNERS



PEOPLE REACHED BY PARTNERS

Organisation	People Reached
ADRA Zimbabwe	30,220
Mercy Corps	17,215
Christian Care	12,540
CRS	10,000
Save The Children	725

