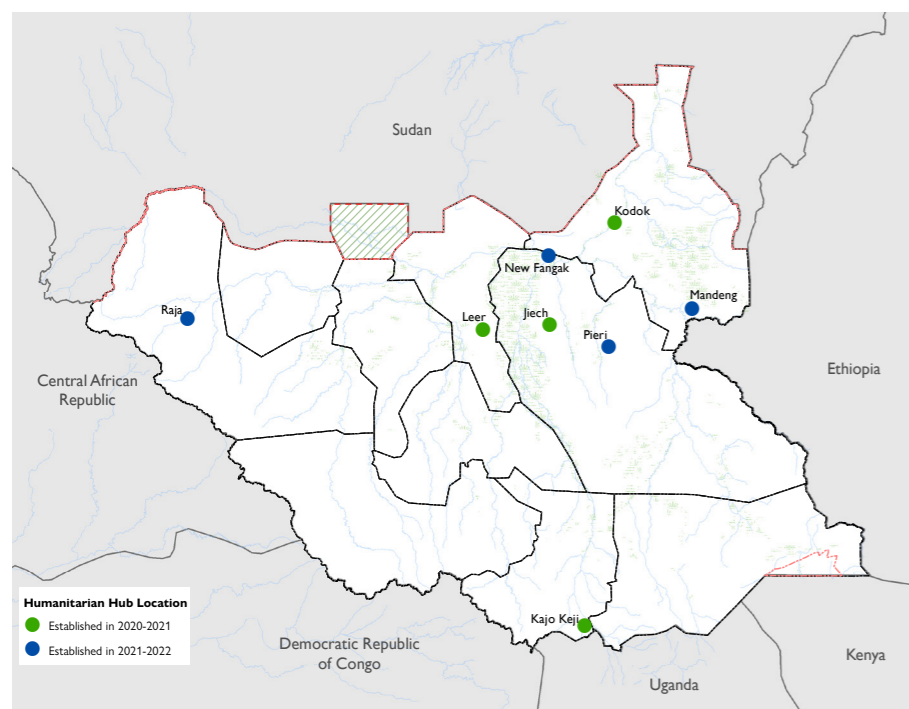


### Situation Overview

The Humanitarian Hubs will support an efficient, effective and timely humanitarian response to the most vulnerable communities living in remote areas across South Sudan. It will also ensure a conducive and safe environment for a long term presence of aid workers from national and international NGOs, as well as UN agencies. Such presence will expand humanitarian access, improve communication with communities and local authorities, speed up rapid need assessments and tailor response to needs identified with and by affected communities.

Furthermore, the hubs will provide space and support to development actors who consider that conditions are in place for early recovery and resilience activities. Sites for the initial four humanitarian hubs out of total eight (8) planned hubs have been finalized and ready for construction at different locations in South Sudan.

### Humanitarian Hub Location Map



### International Organization for Migration (IOM):

- Land and hub management agreements with local authorities and identified partners.
- Operational liaison with relevant humanitarian counterparts, NNGOs, INGOs and Government entities.
- In country transportation of materials to the hub sites.
- Quality control mechanism, pre and post operational coordination of humanitarian hubs.
- Capacity building of identified partners to attain efficient hub operations.

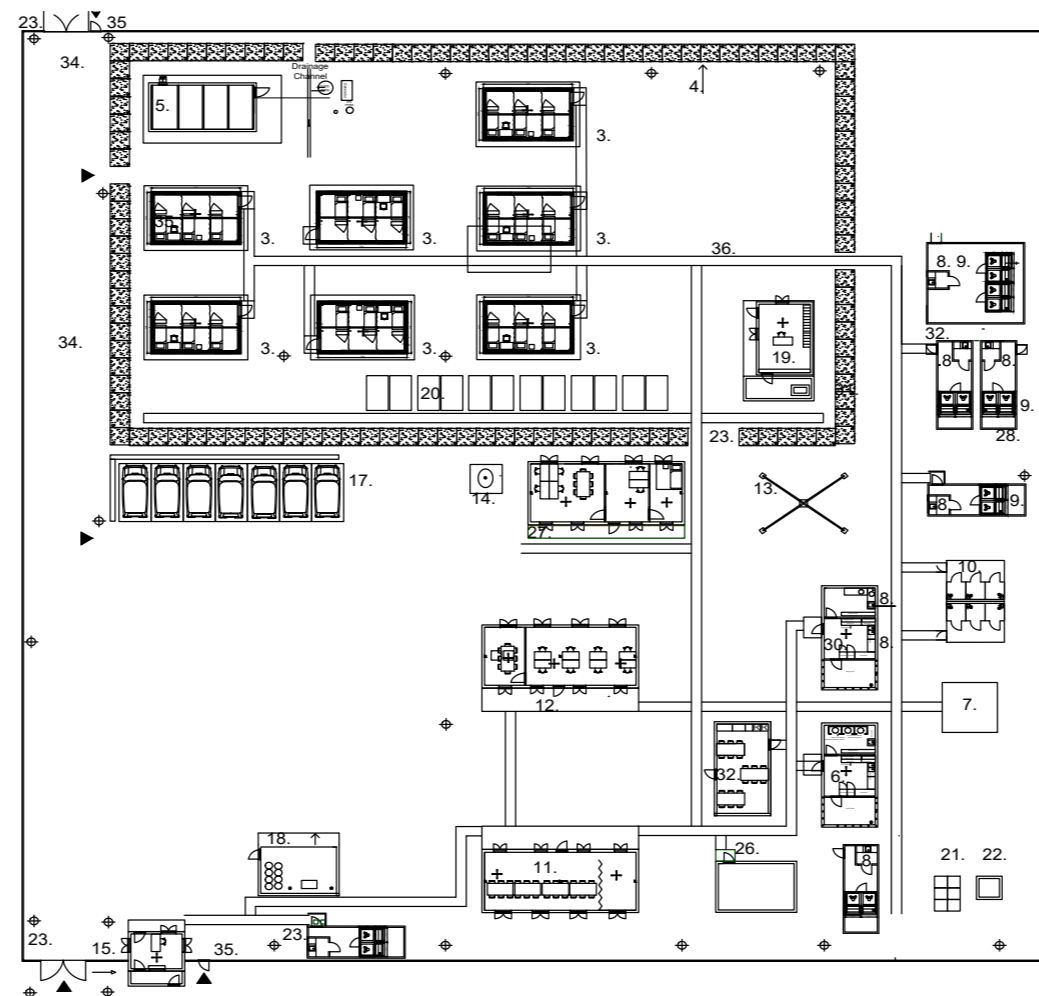
### Swedish Civil Contingencies Agency (MSB):

- Overall Project Management of the implementation of the Hub Service package including conceptualization, planning, integration of gender and environmental aspects, specification for procurement, logistics, local construction, technical installations, capacity building and hand over.

### Office and Accommodation



### Site Plan



### Partnership Roles and Responsibilities

#### Office for the Coordination of Humanitarian Affairs (OCHA):

- Support deep field coordination with the selected humanitarian hub implementing partground and liaise with ICCG and NAWG on priorities.
- Coordinate multi-sectoral response scale up in the catchment area of the humanitarian covering 25-30 km radius.
- Support access negotiation, UN-Humanitarian Civil Military coordination and engagements with local authorities.
- Support linkages with development partners and with the Humanitarian Response Plan (HRP) and UN Cooperation Framework (UNCF)
- Coordinate with the NGO Forum Safety and Security, UNDSS, and Security and Agency Focal points on the ground on any security relocation

### Facts and Figures

#### Quality Aspects

Sustainable results • Appropriate living and working conditions • Facility management • Knowledge transfer, coordination and training • Decentralized response • NEXUS coordinated response	Cross cutting • Addressing gender & diversity aspects • Identified environmental results to achieve • Safety and security • Medical coordination and first responders • Conflict sensitivity
--	---

#### Possible Add-Ons

Common storage facilities	Current : Not included, space assessed Planned: Separate project can be added
Increased office and accommodation capacity	Current : Not included Planned: Based on Hub utilization

#### Project service package for one field Humanitarian Hub - in short

Accommodation	20
Common office work stations	20
Meeting room	Yes
Emergency communication and internet	Yes
Water purification plant	Yes
Kitchen/Canteen	Yes
Security installations according to UNDSS local recommendations	Yes
Electricity 24/7 (Solar cell solution)	Yes (DEMA)

### Construction and Energy Solution



#### Donors:



#### Enabling partners:

