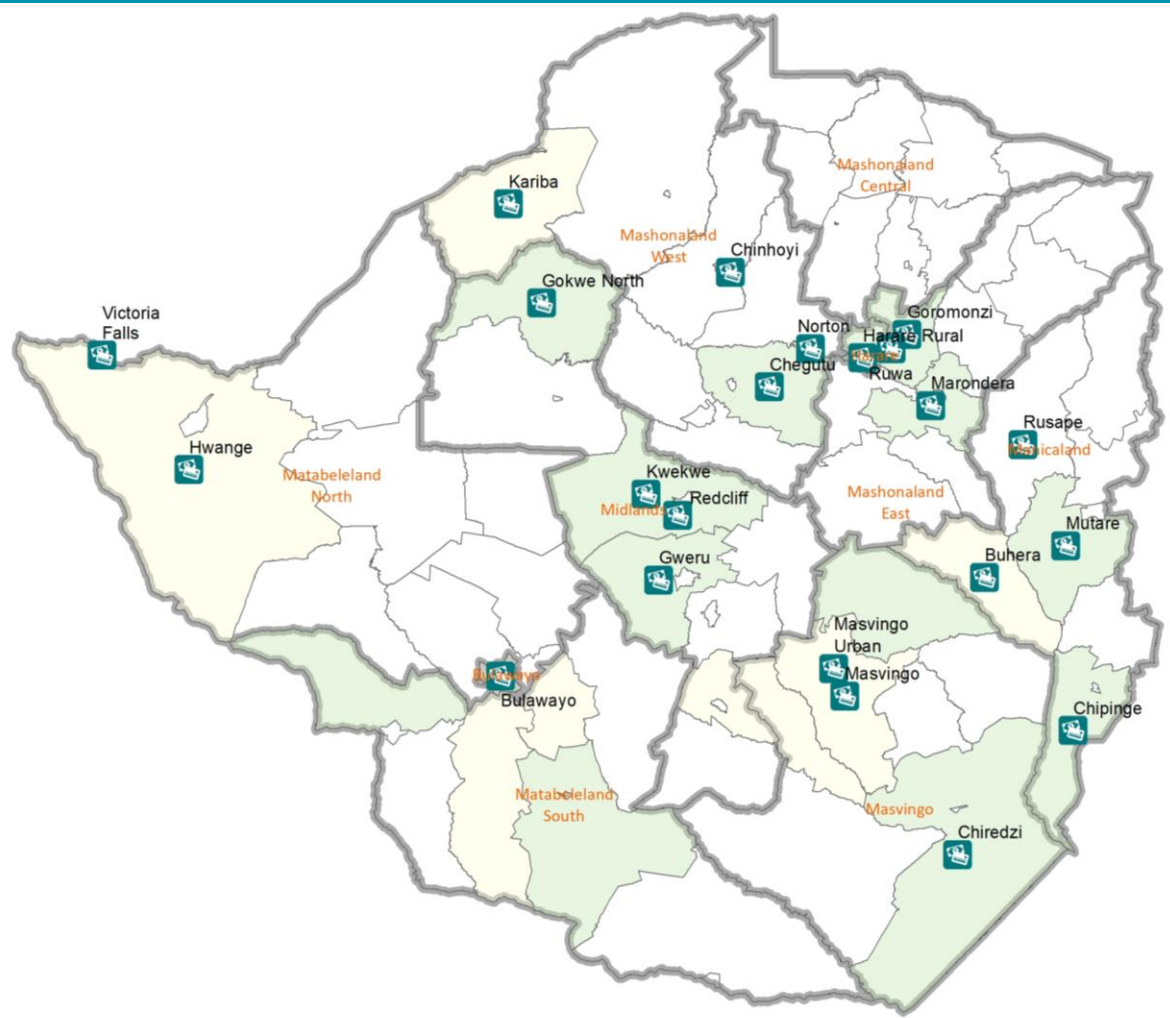


During the month of June 2021, FSL Cluster partners reported to have reached 354,252 people with either in-kind food distribution, cash or vouchers modality in both rural and urban areas. Among them, 276,933 received cash-based support in urban areas, 45,857 in rural areas while the remaining 31,462 beneficiaries received in-kind food assistance.

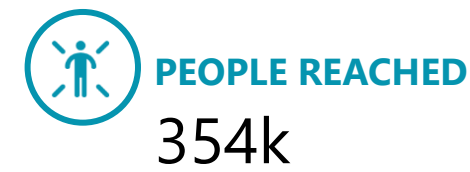
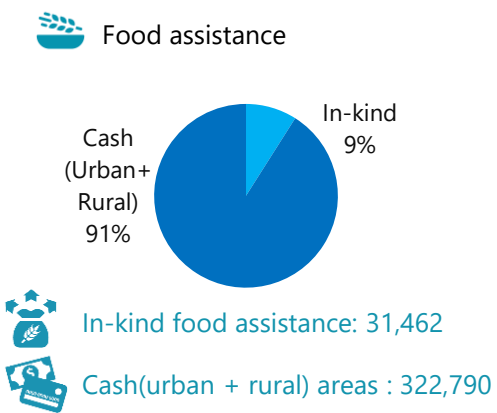
The month of June still shows the continue effort to address vulnerable people who are in need of food assistance regardless how good the harvest season was. This is well represented by the fact that 78% of the people reached this month are in urban areas. The predominant assistance modality is also consistent with the current response, as 91% of the support has been delivered through cash-based support. The number of reporting partners remain low, confirming to be approximately half than during the lean season. Only 41% of beneficiaries in rural areas received food in kind.

COUNTRY RESPONSE MAP



June Reporting Organizations/Implementing Partners
 ADRA Zimbabwe, CARE International, Caritas Bulawayo, Catholic Relief Services, DanChurchAid, GOAL, Jairos Jiri Association (JJA), LEAD, Mercy Corps, OXFAM, Plan International, Terre des Hommes Italia, Welthungerhilfe, World Food Programme, World Vision

RESPONSE



The number of people reached include 265,000 under 2021 HRP.

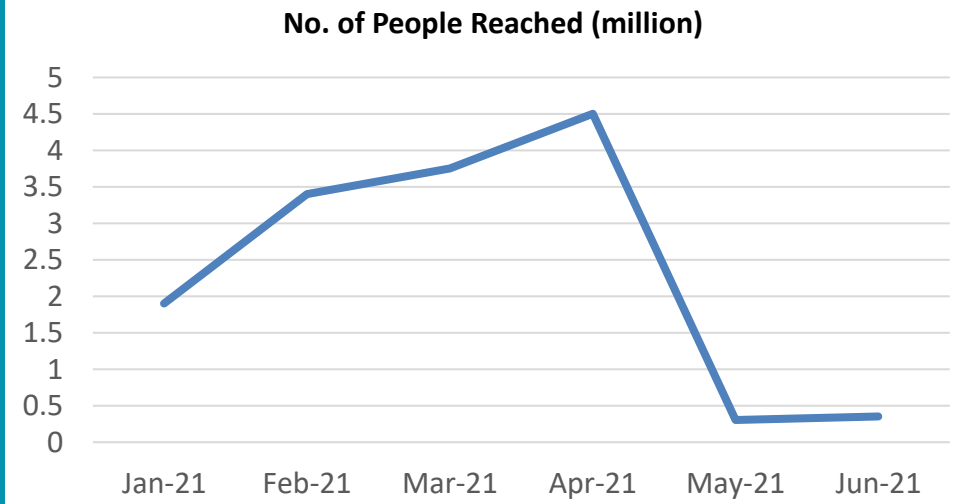
KEY PARTNERS



PEOPLE REACHED BY PARTNERS

Organisations	People Reached
World Food Programme	262,903
Catholic Relief Services	43,175
GOAL	17,790
Terre des Hommes Italia	16,173
OXFAM	6,875
ADRA Zimbabwe	4,654
Jairos Jiri Assoc	2682

PEOPLE REACHED TREND



From January to April, Government data are also represented

Concurrently, a total of 16,500 beneficiaries were supported with agriculture and livelihood assistance. This includes 13,000 receiving training on and inputs for agro-ecology interventions such as soil conservation practices, soil reclamation techniques and restoration of degraded landscapes. 1,347 provided with horticulture seeds and other inputs / materials for household kitchen gardens (and related trainings, cooking demonstrations, etc.). The rest of the beneficiaries received either small livestock inputs, training, extension and advisory services to extension officers and farmers focusing on good agriculture practices with emphasis on climate-smart agriculture or training to support crop pest management, post-harvest handling, storage and processing.

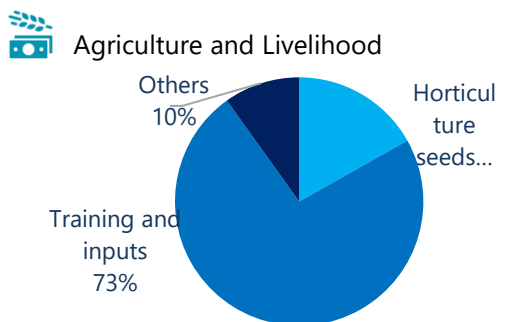
COUNTRY RESPONSE MAP



May Reporting Organizations/Implementing Partners

CAFOD, Caritas Bulawayo, Caritas Gokwe, Caritas Harare, Caritas Masvingo, Caritas Masvingo, Catholic Relief Services, FAO, Jairos Jiri Association (JJA), LEAD, Practical Action, Trócaire, World Vision

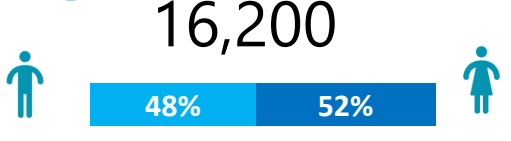
RESPONSE



Training and inputs: 13,402

Horticulture seeds and other inputs / materials: 1,347

PEOPLE REACHED



KEY PARTNERS

6 PARTNERS



PEOPLE REACHED BY PARTNERS

Organisations	People Reached
Practical Action	12,700
Jairos Jiri Associati	1,266
CAFOD	1,222
Trócaire	702
FAO	566
Catholic Relief Services	50

PEOPLE REACHED TREND

