

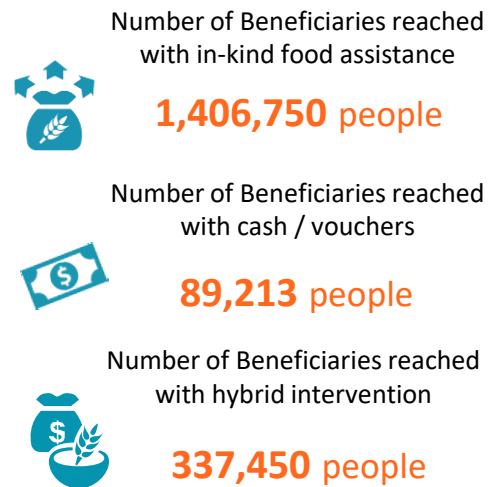
### COUNTRY RESPONSE UPDATE

In March 2020, FSL cluster partners assisted over 1,8 million beneficiaries with emergency food assistance. 77% of the beneficiaries received in-kind food assistance while 5% received Cash and Vouchers support and 17% received hybrid intervention.

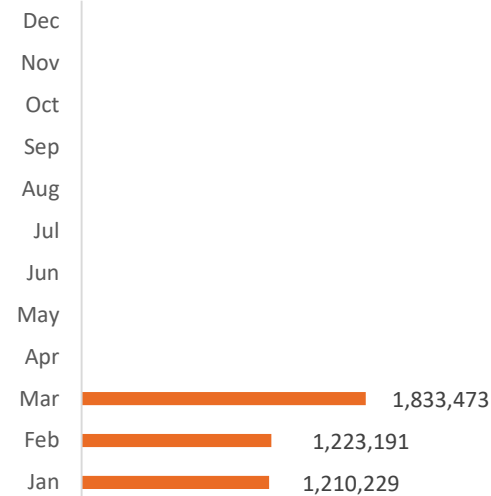
Since January, WFP and FSL partners have reached over 2 million unique beneficiaries with emergency food assistance. On average, 1,4 million beneficiaries are receiving support month on month from a total of 24 different partners.

In the January 2020 IPC update, an estimated 5.29 million people (45% of the population) are likely to face Crisis (Phase 3) acute food insecurity or worse, out of which an estimated 1.11 million people are facing Emergency (Phase 4) acute food insecurity and 40,000 are in Catastrophe (Phase 5). [Click here to download the IPC key messages.](#)

### KEY INDICATORS



### MONTHLY RESPONSE TREND



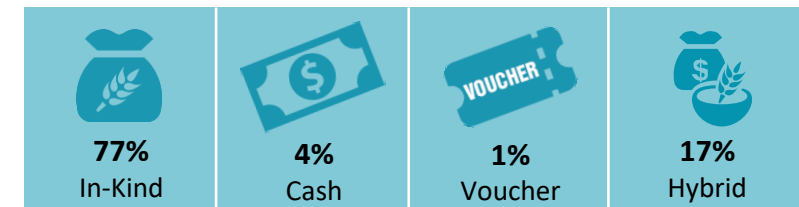
### CLUSTER OBJECTIVES

**CO1: Provide Food Assistance**

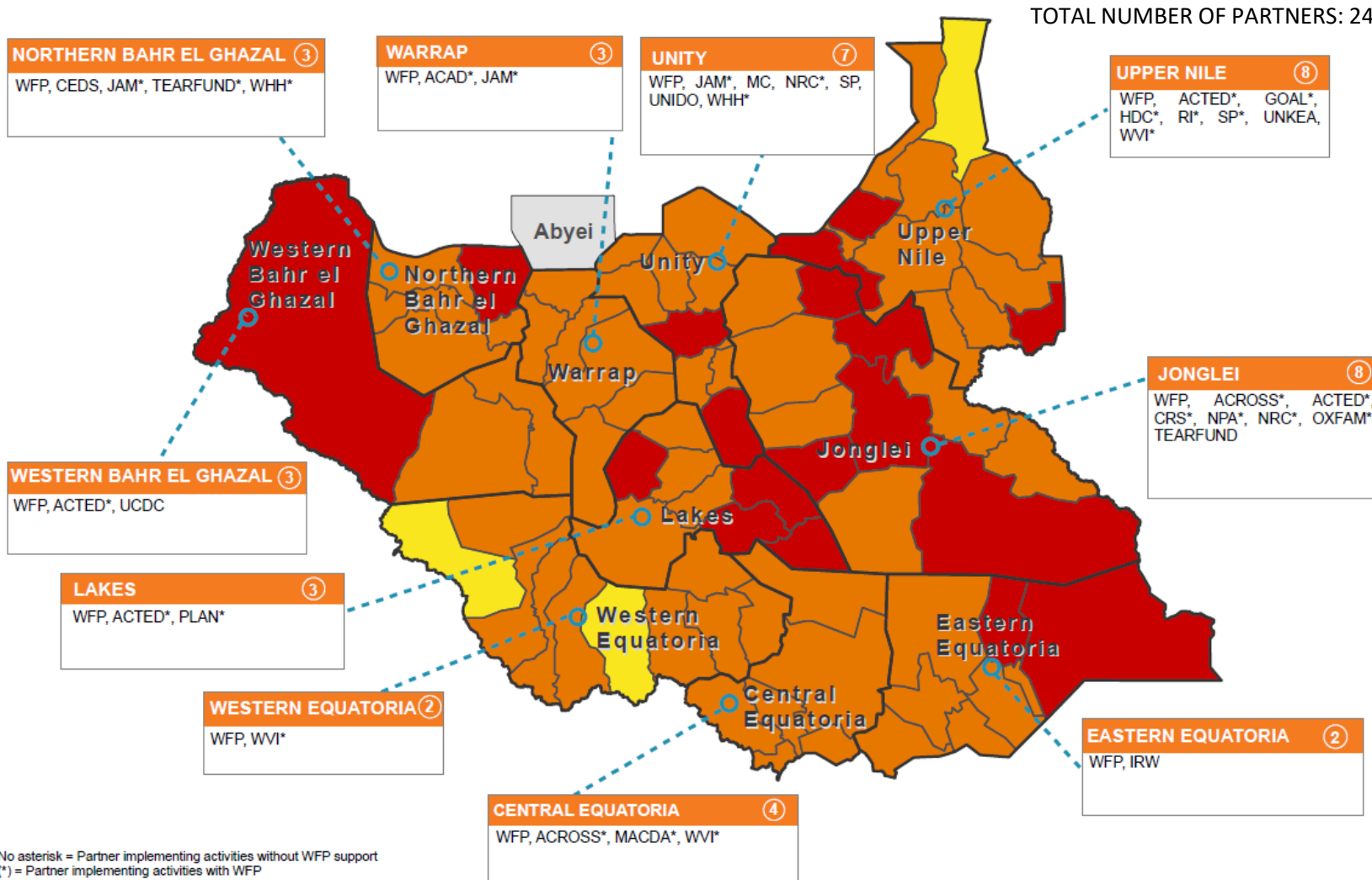
**Requirement: US\$645 million**



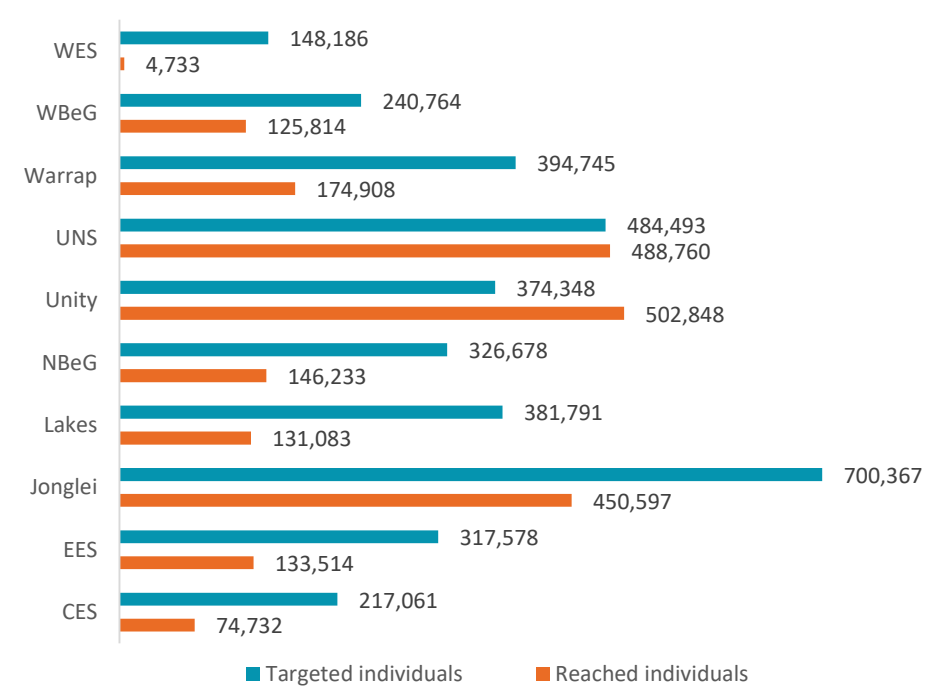
### MARCH RESPONSE



### OPERATIONAL PARTNERS REPORTING (JAN-MAR 2020) - CO1



### ANNUAL TARGET VS PARTNERS RESPONSE - CO1



### IPC Population by State (in %) : January 2020 Update

