

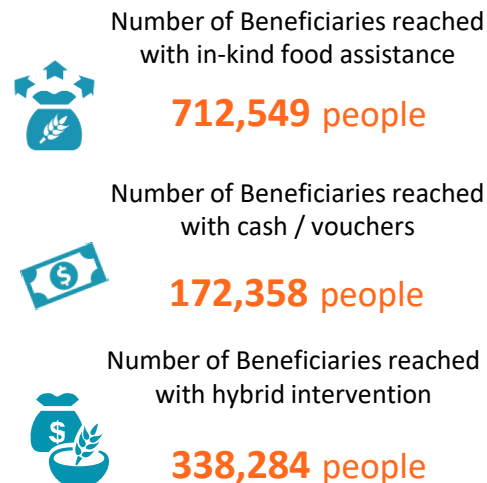
COUNTRY RESPONSE UPDATE

In February 2020, FSL cluster partners assisted over 1,2 million beneficiaries with emergency food assistance. 59% of the beneficiaries received in-kind food assistance while 14% received Cash and Vouchers support and 27% received hybrid intervention.

Since January, WFP and FSL partners have reached over 1,4 million unique beneficiaries with emergency food assistance. On average, 1,2 million beneficiaries are receiving support month on month from a total of 24 different partners.

In the January 2020 IPC update, an estimated 5.29 million people (45% of the population) are likely to face Crisis (Phase 3) acute food insecurity or worse, out of which an estimated 1.11 million people are facing Emergency (Phase 4) acute food insecurity and 40,000 are in Catastrophe (Phase 5). [Click here to download the IPC key messages.](#)

KEY INDICATORS



MONTHLY RESPONSE TREND



CLUSTER OBJECTIVES

CO1: Provide Food Assistance

Requirement: US\$645 million

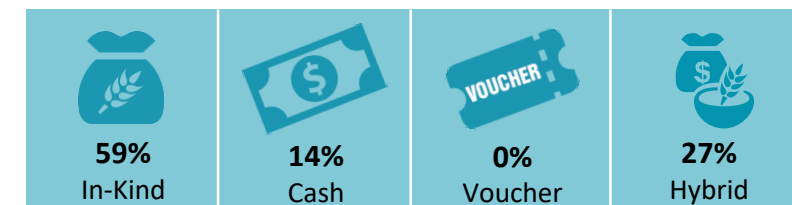
2020 ANNUAL TARGET

3.8 million people

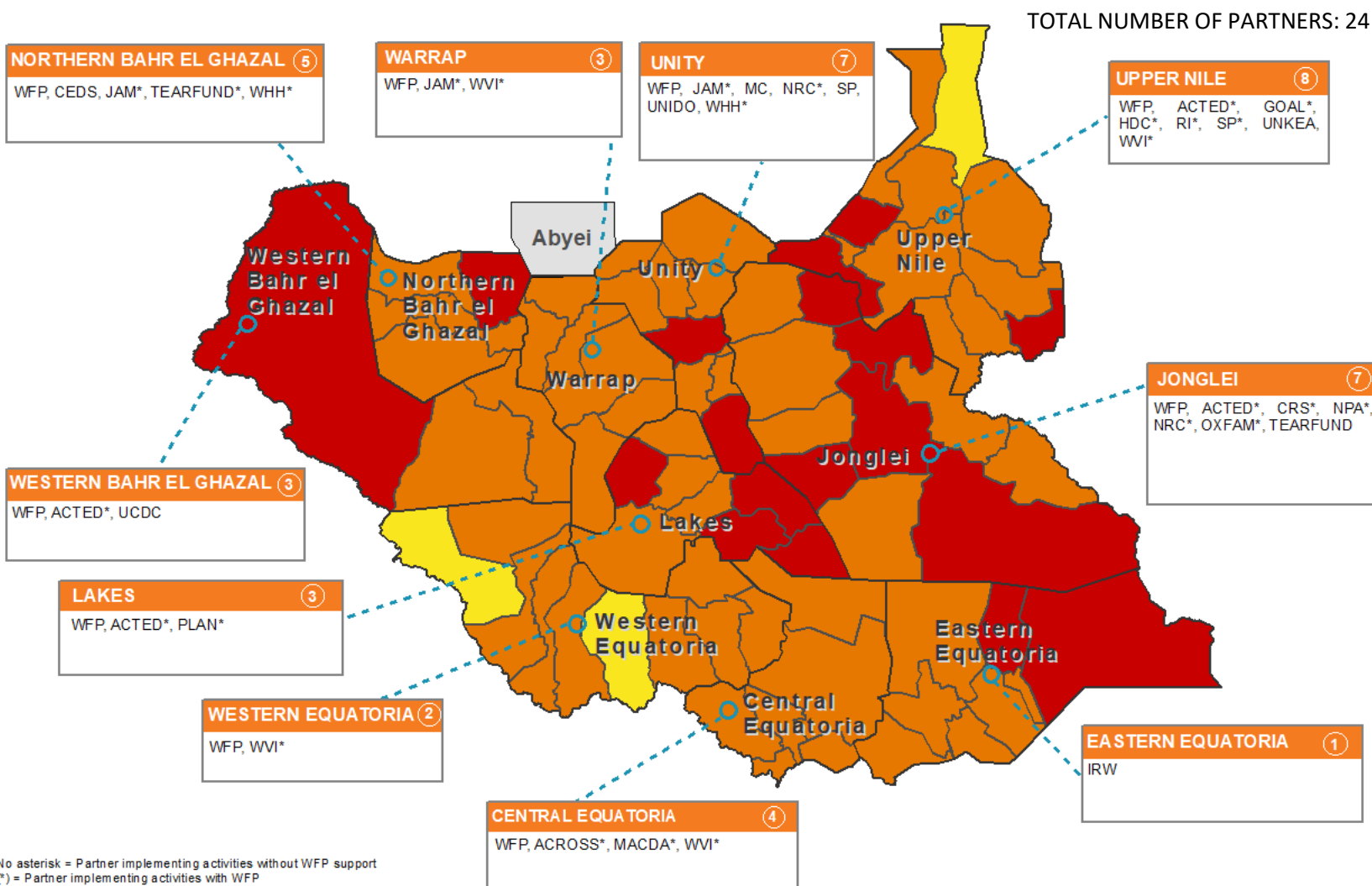
Funded

Funding Gap

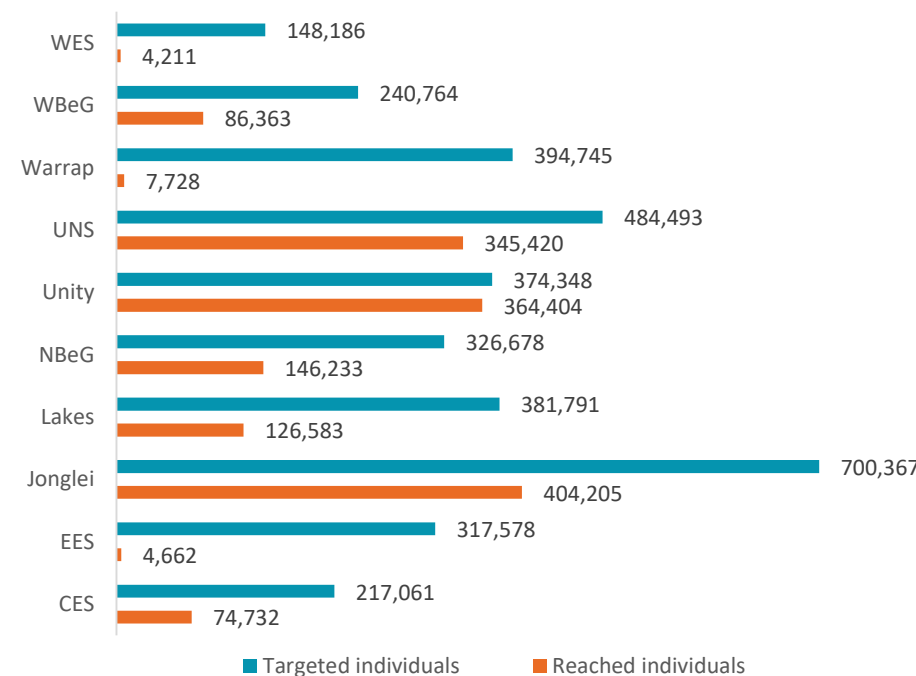
JANUARY RESPONSE



OPERATIONAL PARTNERS REPORTING (JAN-FEB 2020) - CO1



ANNUAL TARGET VS PARTNERS RESPONSE – CO1



IPC Population by State (in %) : January 2020 Update

