



Number of Targeted Beneficiaries Assisted by Region

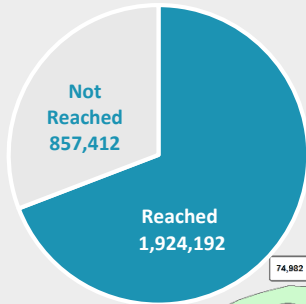


20 Partners Reported

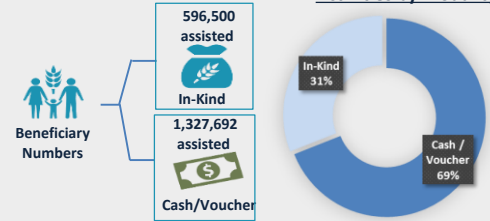


16,238,467 Cash/Vouchers Transferred

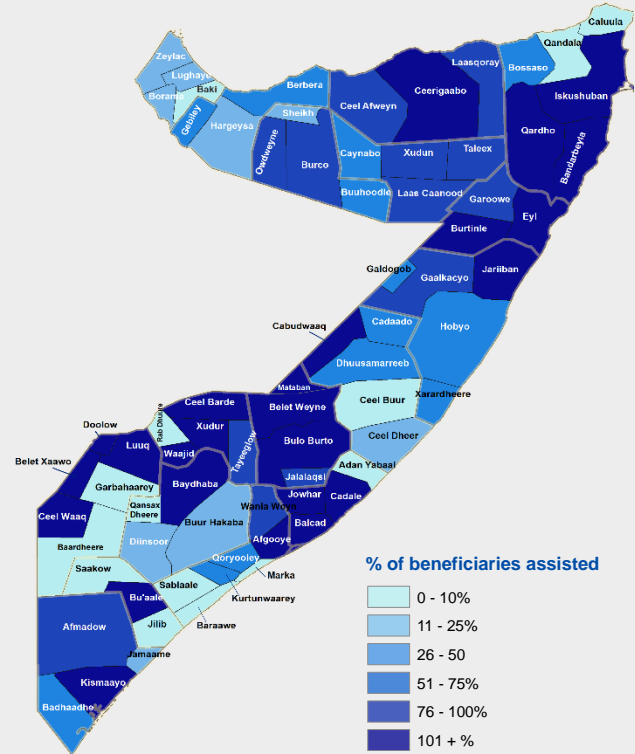
Target 2,781,604



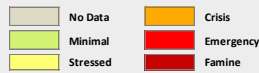
Activities by Modality



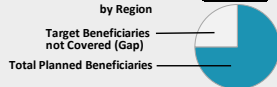
Percentage of Targeted Beneficiaries Assisted per District



IPC Acute Food Security Situation as per FSNAU Jilaa Assessment



Total Beneficiaries targeted by Region



NB: IPC Map revised seasonally based on outcome of FSNAU assessment results i.e. February and August

Strategic Objective 1 Update



Photo Credit: Associated Press, AP

The response has overall reduced by about **150,000 beneficiaries (7%)** as compared to last month. The down-ward trend of IASN response over the last four months is of concern to the cluster particularly in Woqooyi Galbeed, lower Shabelle and Awdal regions where the acute food insecurity was sustained or deteriorated. The level of response in these regions has not only reduced as compared to last month but is significantly lower than the monthly target ranging between **18-30%**

The bulk of the assistance was delivered by three key partners who jointly assisted **83%** of the beneficiaries i.e. WFP (**63%**), SCI (**11%**) and FAO (**9%**). The remaining **17%** of the total assistance was delivered by seventeen partners (**17**) making a total of **20** responders who shared IASN reports in February.

Monthly Trend Line – Beneficiaries Assisted

