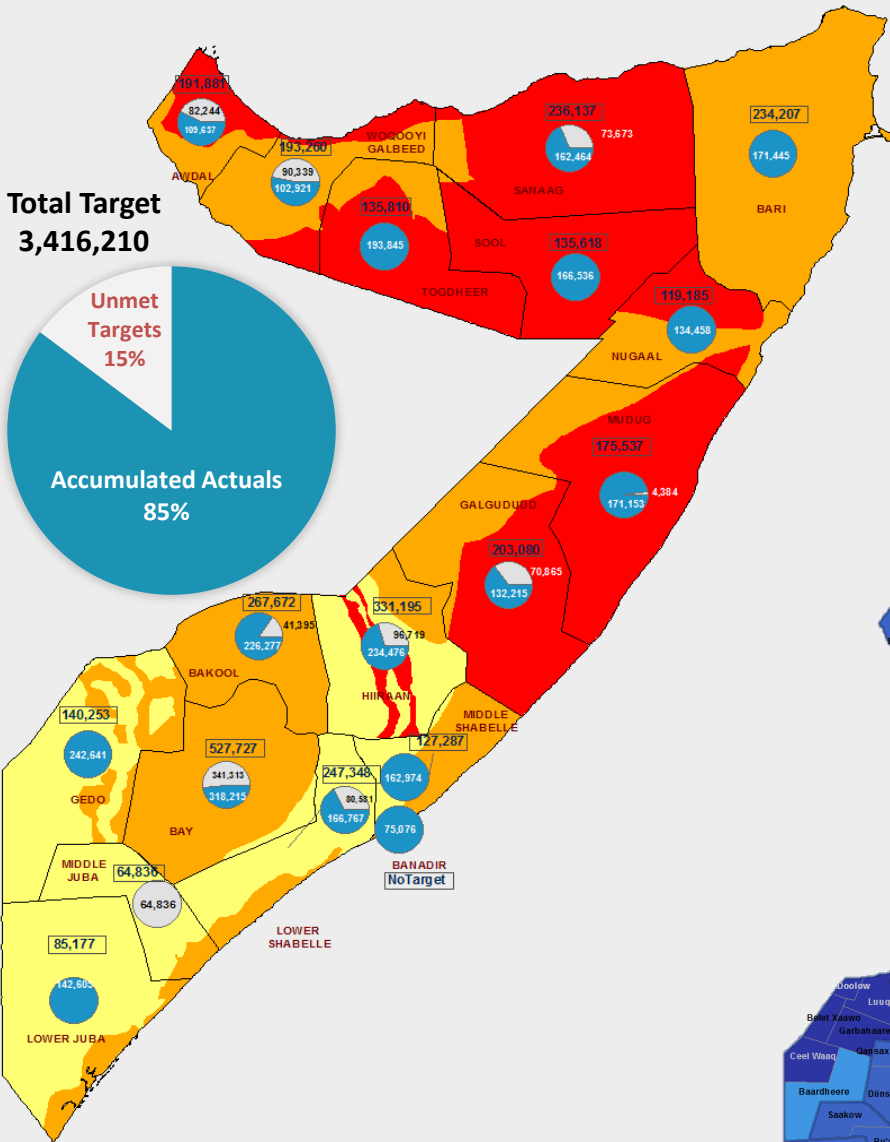
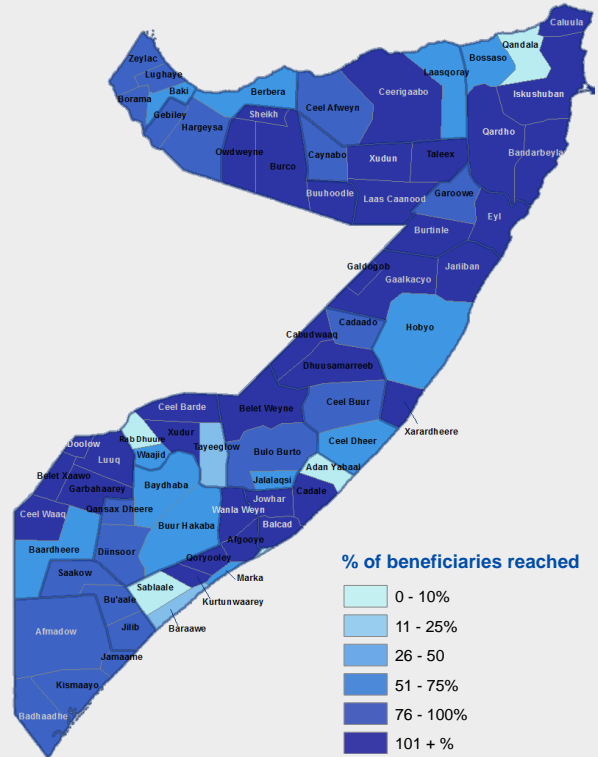


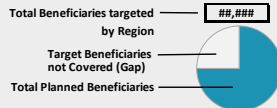
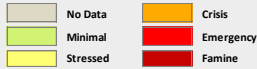
Number of Targeted Beneficiaries Assisted by Region



Percentage of Targeted Beneficiaries Assisted per District



IPC Acute Food Security Situation as per FSNAU Jilaa Assessment



Strategic Objective 3 Update



Boys throw food to feed their goats in a camp for the displaced in Gardho in Somalia's semiautonomous north-eastern state of Puntland. March 2017 (Photo credit AP Photo/Ben Curtis)

FSC partners have continued its livestock assets protection and seasonal inputs support in December. They have collectively assisted about 172,512 beneficiaries in December and increased the level of support to 2,911,905 million beneficiaries cumulatively since the dryer season started (this is 85% of the seasonal target).

The livestock assets protection support account for 83% of the beneficiaries supported in this response objective. Livestock feed/ fodder distribution (rangeland cubes) and livestock treatment were the main activities of the livestock asset protection. The distribution of agricultural input, land preparation support with tractor hour's account for about 17% of beneficiaries support in December.

The livelihoods input and livestock assets protection support were delivered by FAO (73%) and Nomadic Assistance for Peace and Development (21 %).

Beneficiaries Assisted by Input type

