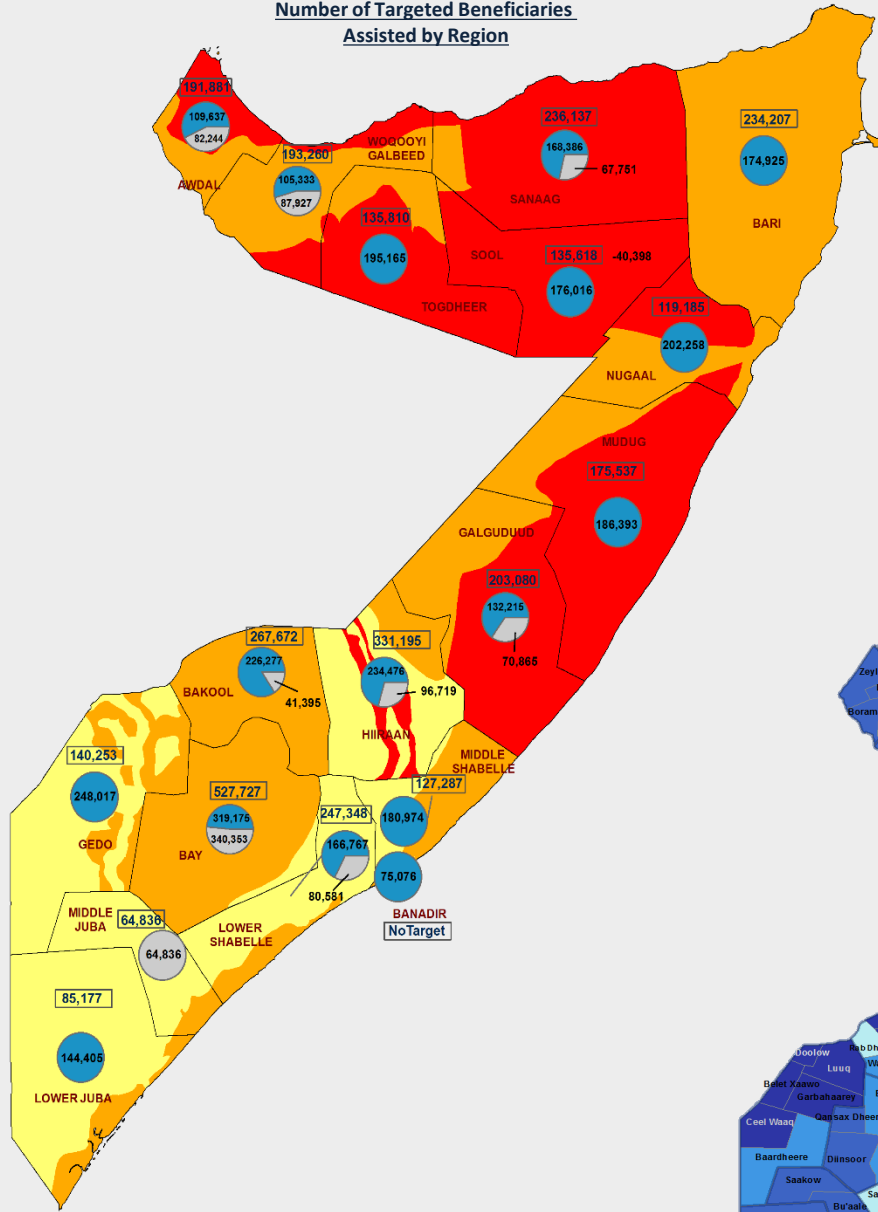


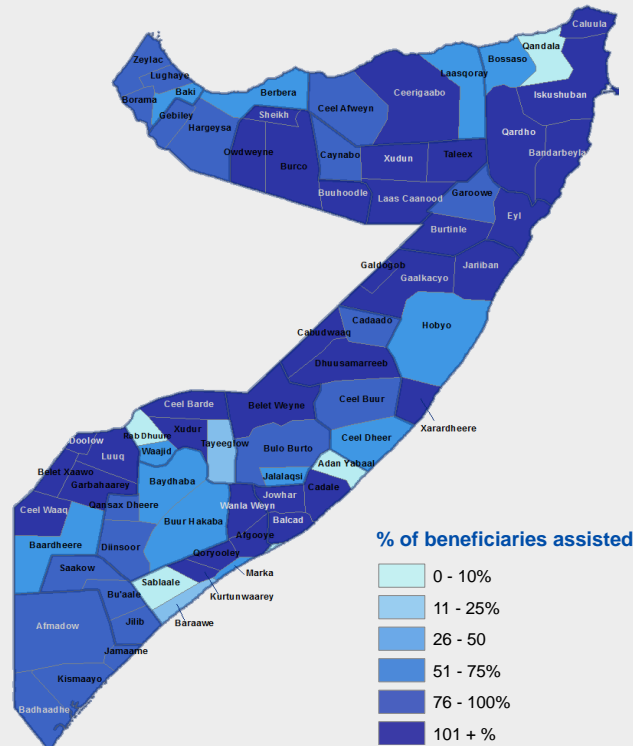


17 Partners Reported

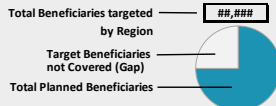
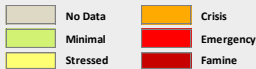
Number of Targeted Beneficiaries Assisted by Region



Percentage of Targeted Beneficiaries Assisted per District



IPC Acute Food Security Situation as per FSNAU Jilaa Assessment



NB: IPC Map revised seasonally based on outcome of FSNAU assessment results i.e. February and August

Strategic Objective 2 Update



Livestock assets protection and fisher folks support represents 85% of the beneficiaries supported while distribution of agricultural input (farm tools) and tractor hours support accounts for the remaining 15% of beneficiaries support in January.

Livestock feed/ fodder distribution (Molasses blocks) and livestock treatment were the main activities of the livestock asset protection.

In total seventeen partners have contributed to this response objective for the entire season. FAO has contributed the highest share of the beneficiaries assisted during the season (92%) followed by NAPAD (2%) and Save-the children (1%).

Beneficiaries Assisted by Input type



Beneficiary Numbers

456,824 Assisted

Agricultural Inputs

2,588,671 assisted

Livestock Support

