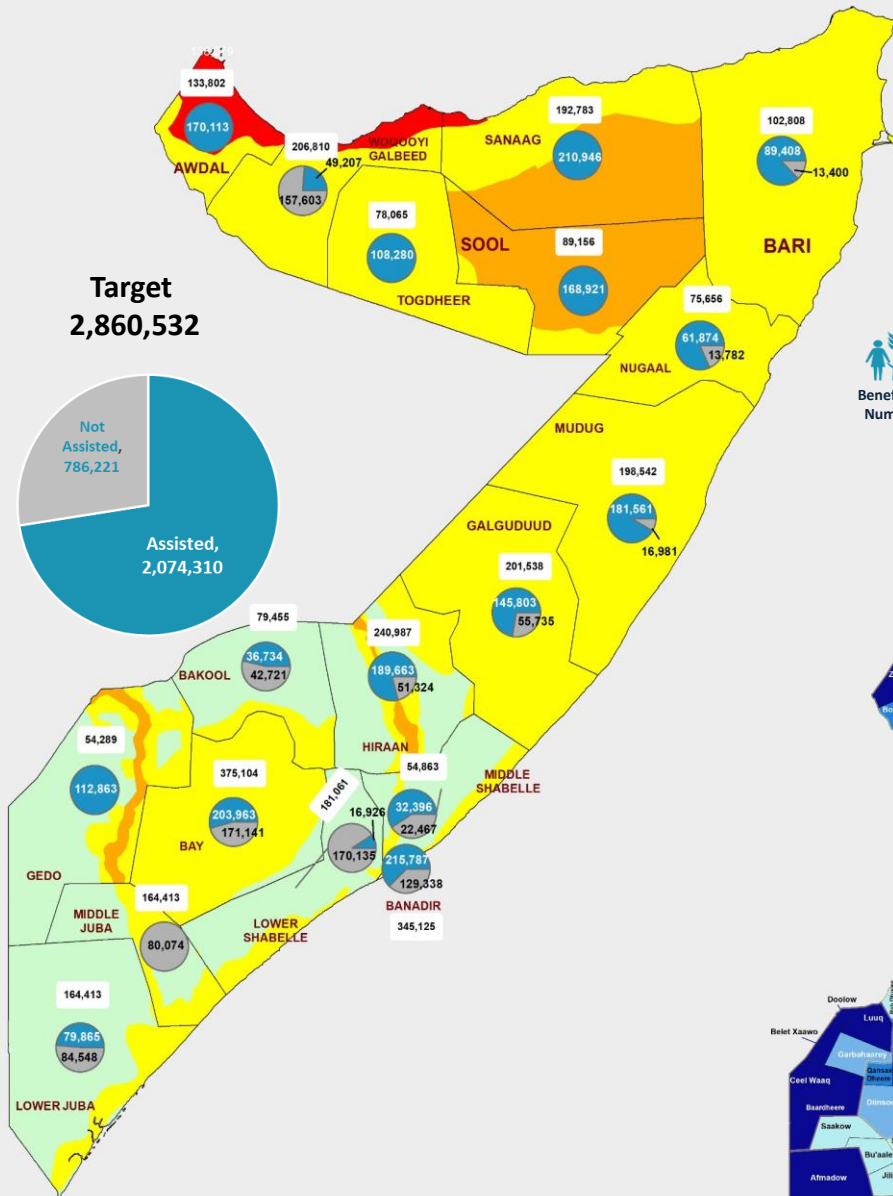
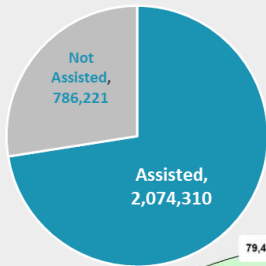


Number of Targeted Beneficiaries Assisted by Region



Target
2,860,532

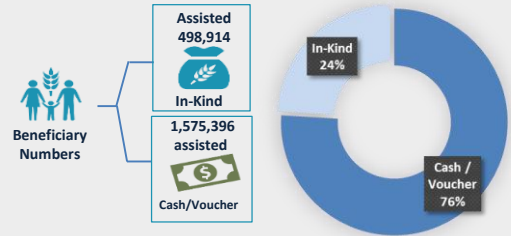


20 Partners Reported

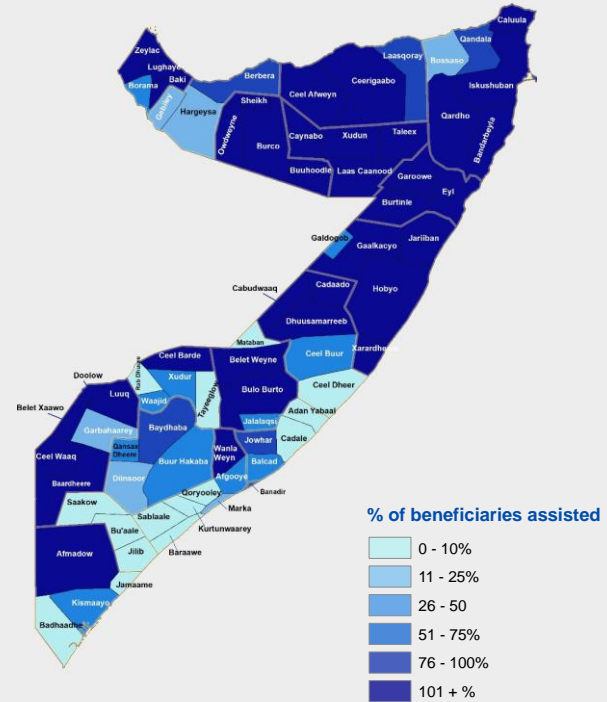


16,666,646
Cash/Vouchers Transferred

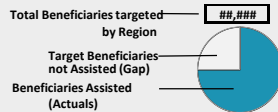
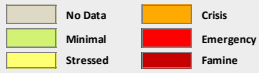
Activities by Modality



Percentage of Targeted Beneficiaries Assisted per District



IPC Acute Food Security Situation as per FSNAU Jilaa Assessment



NB: IPC Map based on Post Gu FSNAU assessment and is revised based on the seasonal assessment.

Strategic Objective 1 Update



Photo credit TONY KARUMBA/AFP/Getty Images

FSC partners assisted 2,074,310 out of 2,860,532 targeted (73%). Of the total number of beneficiaries reached for this objective, 76% were supported through cash/ voucher transfer while 24% received in-kind support.

WFP response constitute 60% of the response: with SCI (13%) DRC (6%), FAO (5%) and the combined responses of NRC, ACTED, CWW and Thirteen (13) other partners contributing the remaining 16%.

The September achievements is 8% higher compared to August when 65% of the targeted beneficiaries were reached. Notably, less than 25% of the targeted beneficiaries were assisted in Lower Shabelle, Middle Juba and Woqooyi Galbeed; this is related both to insecurity as well as availability of resources.

Monthly Trend Line – Beneficiaries Assisted

