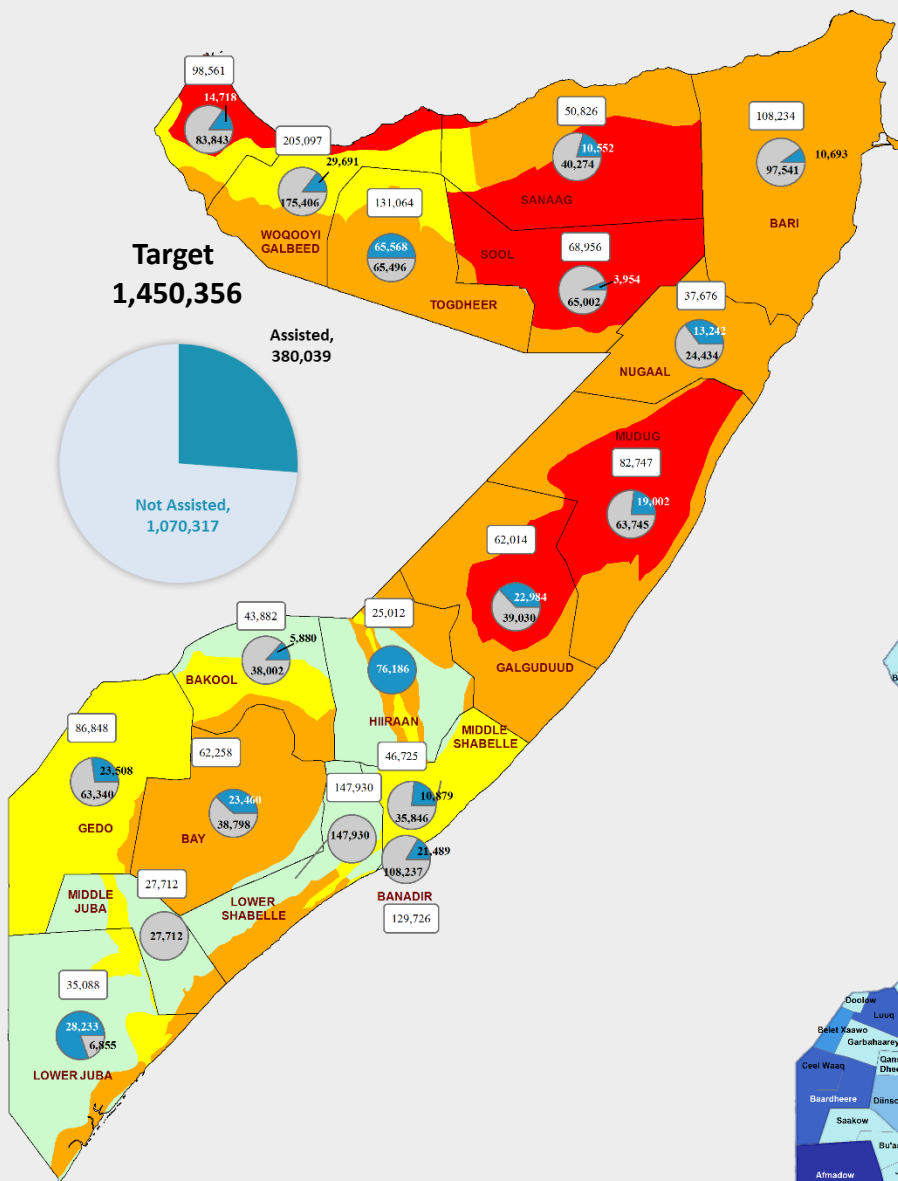


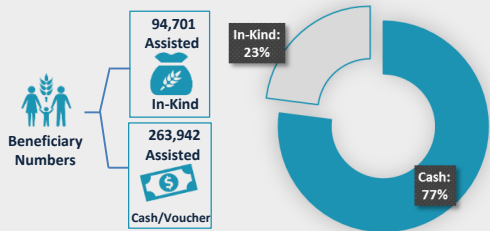
**Number of Targeted Beneficiaries Assisted by Region**



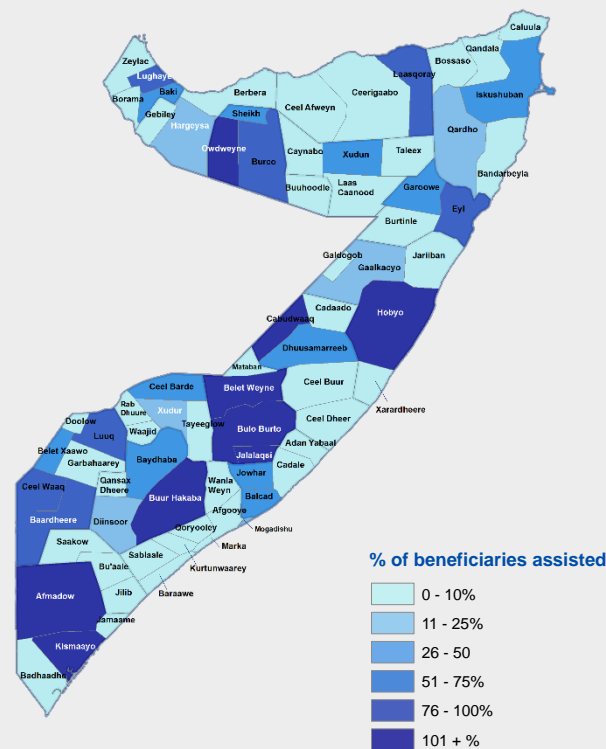
**18 Partners Reported**

**3,140,638 Cash Transferred**

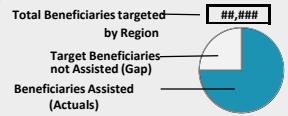
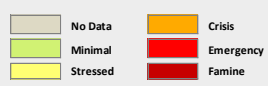
**Activities by Modality**



**Percentage of Targeted Beneficiaries Assisted per District**



IPC acute food security situation as per FSNAU Jilala Assessment



NB: IPC Map based on Post Jilala FSNAU assessment and is revised based on the seasonal assessment.

**Strategic Objective 3 Update**



FSC partners assisted **380,039** beneficiaries compared to the target of **1,450,357** (26% of the target) in supporting livelihoods through conditional transfers objective of the cluster. Of the total number of beneficiaries reached for this objective, 77% were supported through cash/voucher transfer while 23% received in-kind support.

The response in this objective gradually increasing and it has reached to this level for the first time since the beginning of the year. The level of assistance in Hiran, lower Juba and Togdheer significant as compared to target. Response by partners shows that WFP supported 76%, ACTED 11%, DRC 3% with WVI, WRRS, CARE, ADESO, WARDI, Candlelight, CESVI, WHH, ARC and five (5) other partners combined assisted 10% of the total beneficiaries assisted during the month.

Partners have implemented activities, which include rehabilitation of basic infrastructure to support agriculture production such as irrigation canals and water points. As well, capacity building training to equip participants with various life skills were prioritised.

**Monthly Trend Line – Beneficiaries Assisted**

