



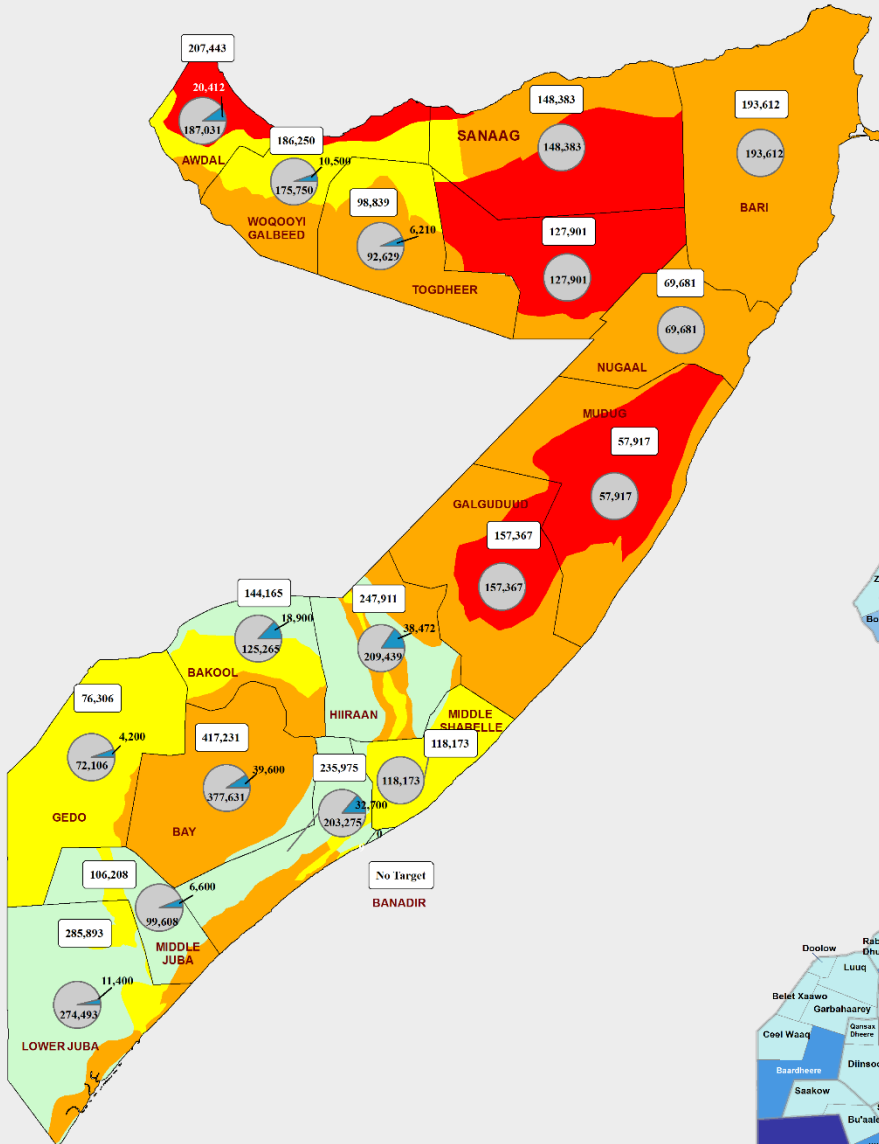
**Number of Targeted Beneficiaries Assisted by Region**



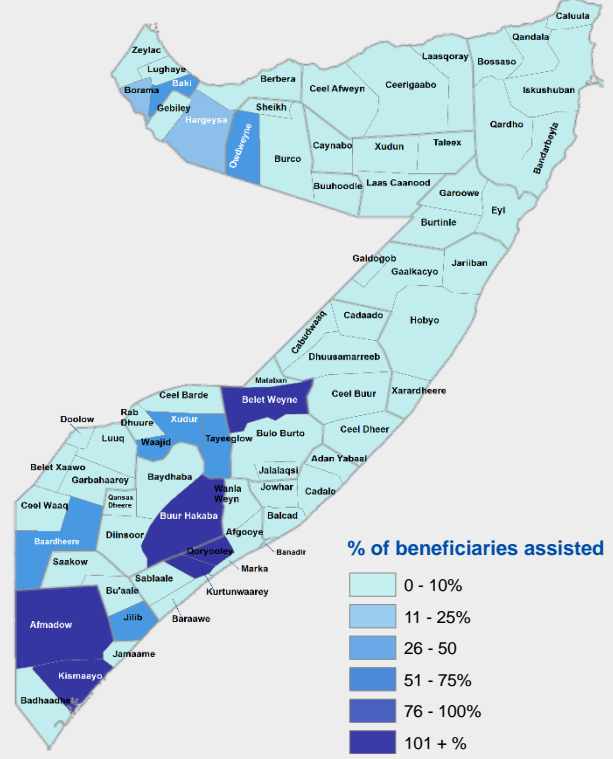
**5 Partners Reported**



**101,400 Voucher Value**



**Percentage of Targeted Beneficiaries Assisted per District**



**IPC Acute Food Security Situation as per FSNAU Jilaa Assessment**

- No Data
- Minimal
- Stressed
- Crisis
- Emergency
- Famine

**Total Beneficiaries targeted by Region** [###,###]  
**Target Beneficiaries not Assisted (Gap)** [###,###]  
**Beneficiaries Assisted (Actuals)** [###,###]

NB: IPC Map based on Post Ji'laal FSNAU assessment and is revised based on the seasonal assessment.

**Strategic Objective 2 Update**



Image Source: FAO

FSC partners assisted **188,994** beneficiaries with seasonal inputs including livestock assets protection related activities (Objective 2 of the cluster). These activities are geared towards supporting production for Dyer season. FAO provided **80%** of the responses-

Relief International **9%**, Save the Children **6%**, WHH **4%** and ARC **2%**. August is the first month for providing such inputs and level of assistance expected to increase in coming months as the season progresses.

**Beneficiaries Assisted by Input type**

