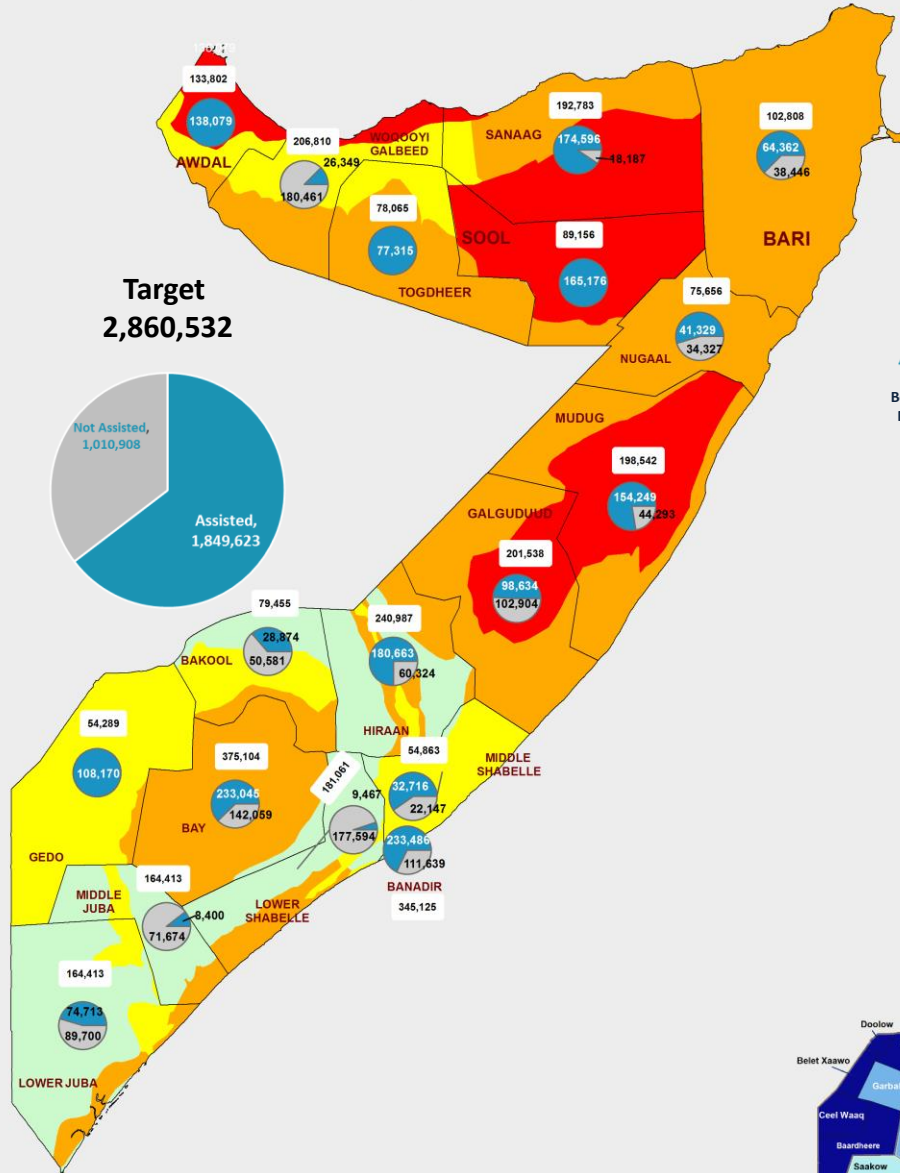
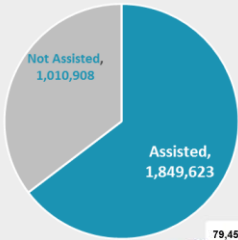


**Number of Targeted Beneficiaries Assisted by Region**



**Target 2,860,532**

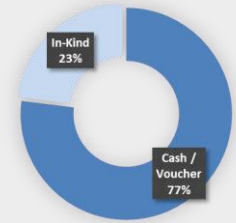
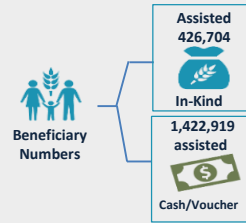


**20 Partners Reported**

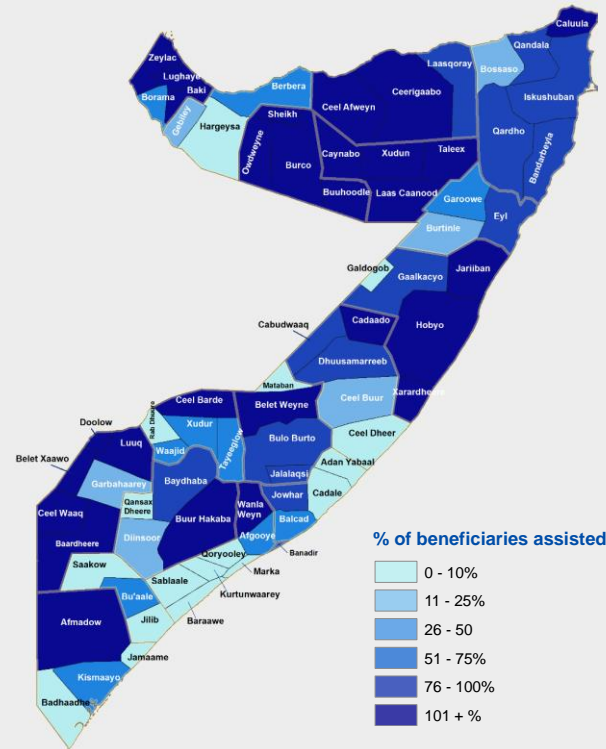


**15,306,838 Cash/Vouchers Transferred**

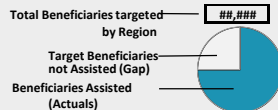
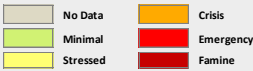
**Activities by Modality**



**Percentage of Targeted Beneficiaries Assisted per District**



**IPC Acute Food Security Situation as per FSNAU Jilaa Assessment**



NB: IPC Map based on Post Jilaa FSNAU assessment and is revised based on the seasonal assessment.

**Strategic Objective 1 Update**



FSC partners assisted **1,849,623** beneficiaries out of **2,860,532** targeted (65% achievement) in improved access to food and safety nets objective of the cluster. The August achievements are **11% (318,000 beneficiaries)** lower compared to July- when 76% of the targeted beneficiaries were assisted.

The level of assistance in August has decreased as compared to July in all the regions in Somalia except Bay and Awdal. Of the total number of beneficiaries assisted for this objective, **77%** were supported through cash/voucher form while **23%** received in-kind support.

WFP response constitutes **60%** of the response: Save the Children (**9%**), FAO (**8%**), DRC (**7%**) and the combined responses of CARE, ACTED, CWV, OXFAM, COOPI, ADESO, SIF and eight (**8**) other partners contributing the remaining **16%**. Notably, less than **20%** of the targeted beneficiaries were assisted in Lower Shabelle, Middle Juba and Woqooyi Galbeed; this is related both to insecurity as well as availability of resources.

Image Source: ADESO

**Monthly Trend Line – Beneficiaries Assisted**

