

738,784
People in Need



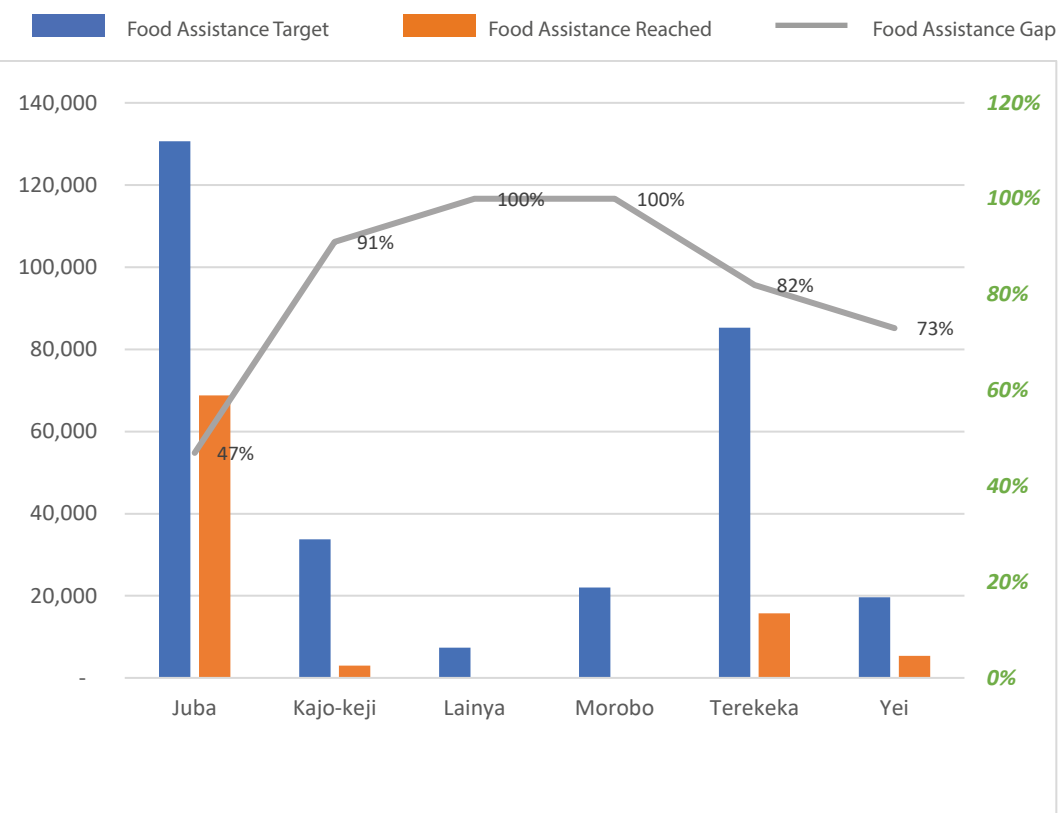
298,759
People Targeted



92,921
People Reached



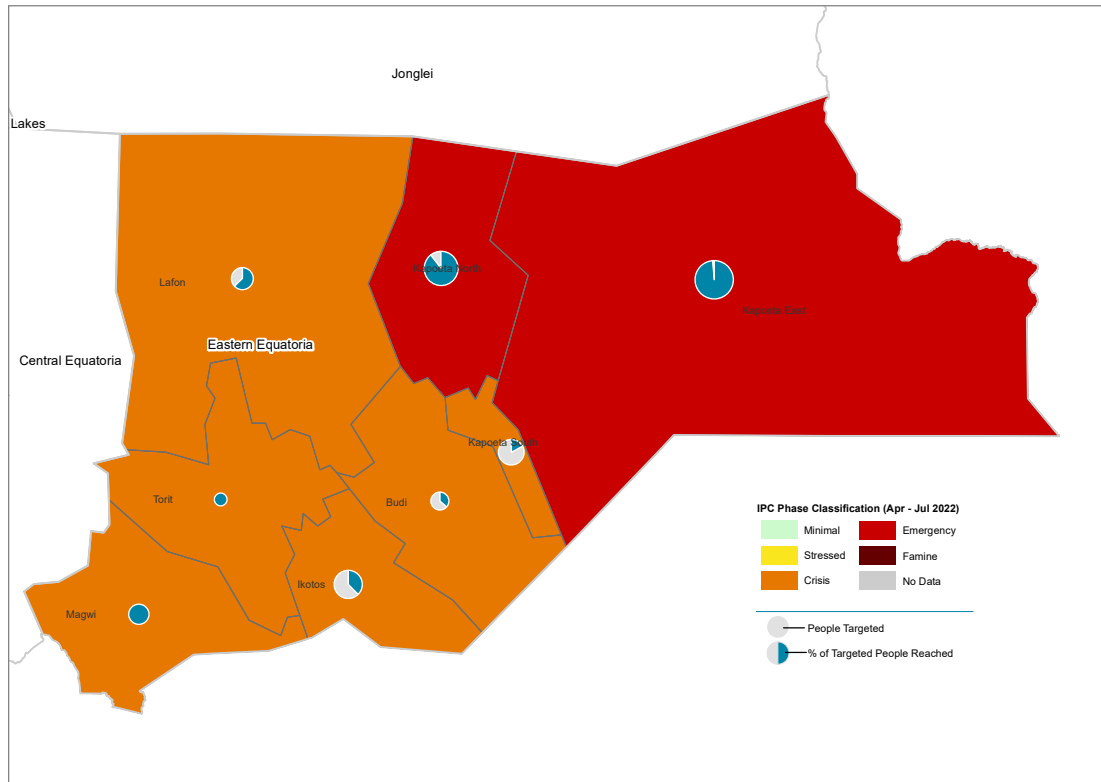
12
Partners



| County | Food Assistance Target | Food Assistance Reach | Food Assistance Gap |
|-----------|------------------------|-----------------------|---------------------|
| Juba* | 130,677 | 68,775 | 47% |
| Kajo-keji | 33,735 | 3,000 | 91% |
| Lainya | 7,391 | | 100% |
| Morobo | 22,043 | | 100% |
| Terekeka | 85,271 | 15,756 | 82% |
| Yei | 19,642 | 5,390 | 73% |

* Gap for local population only. 2,362 Refugees reached with Cash/Voucher in Juba

Partners: AAHI, ADRA, ACROSS, CAFOD, IRW, NPA, OPEN, PLAN, TEARFUND, Titi, WFP, WVI



557,099
People in Need



213,382
People Targeted

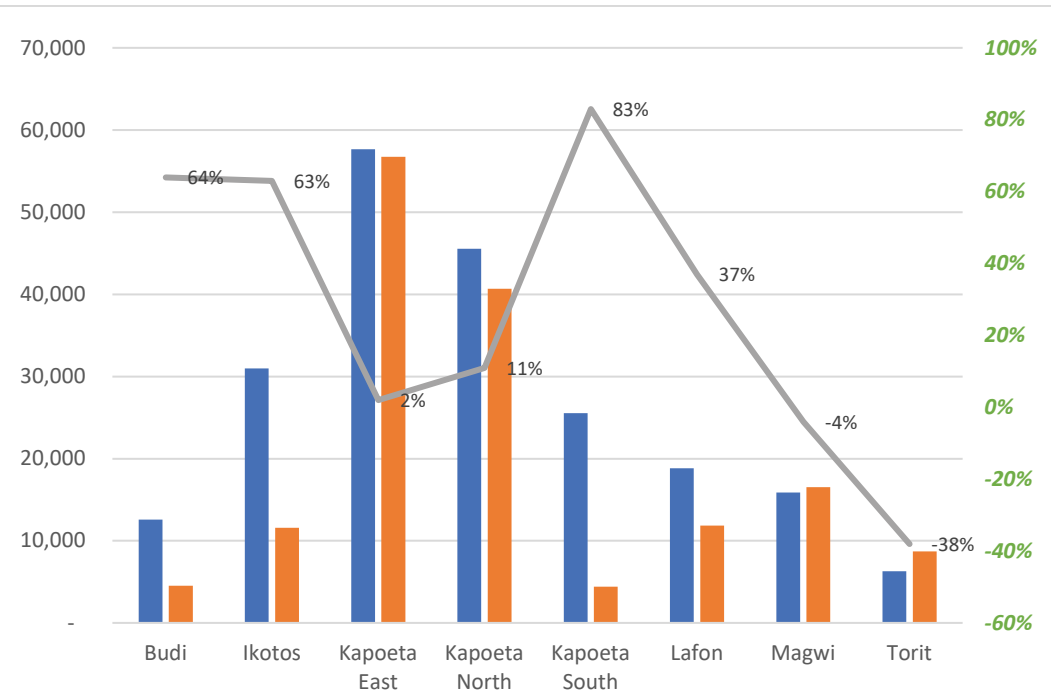


155,027
People Reached

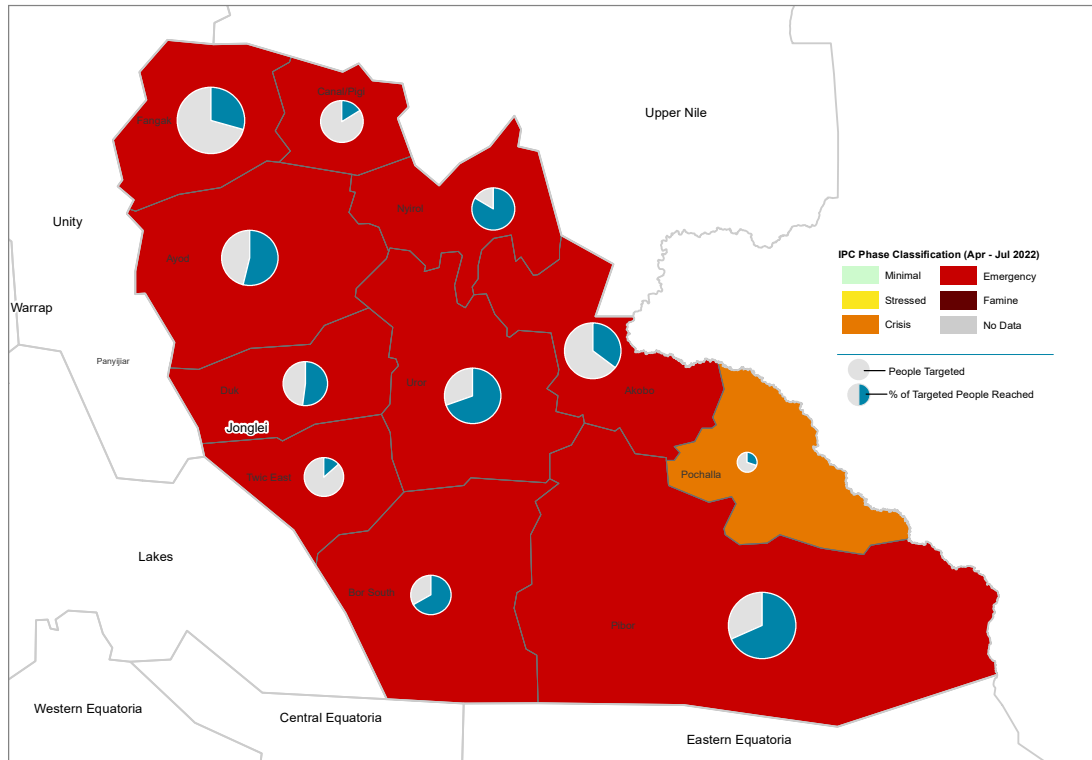


12
Partners

Food Assistance Target Food Assistance Reached Food Assistance Gap



| County | Food Assistance Target | Food Assistance Reach | Food Assistance Gap |
|---------------|------------------------|-----------------------|---------------------|
| Budi | 12,574 | 4,518 | 64% |
| Ikotos | 30,985 | 11,600 | 63% |
| Kapoeta East | 57,683 | 56,748 | 2% |
| Kapoeta North | 45,570 | 40,697 | 11% |
| Kapoeta South | 25,558 | 4,410 | 83% |
| Lafon | 18,822 | 11,840 | 37% |
| Magwi | 15,892 | 16,516 | -4% |
| Torit | 6,298 | 8,698 | -38% |



1,686,968
People in Need



1,112,758
People Targeted

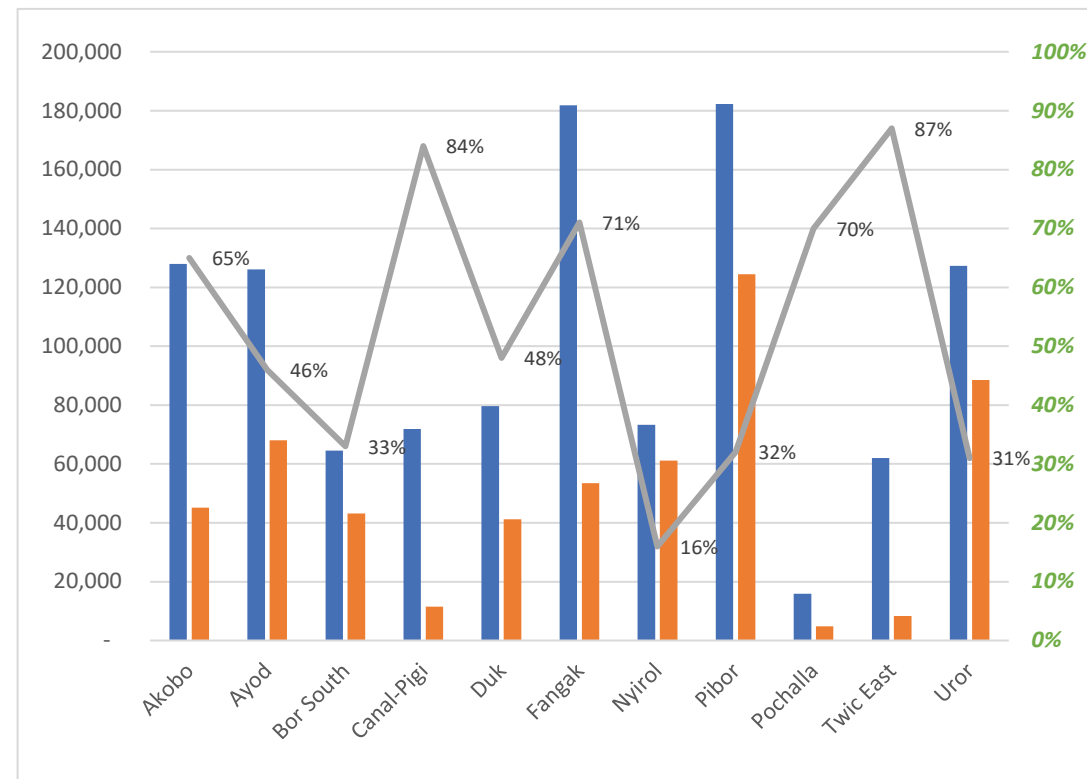


549,953
People Reached

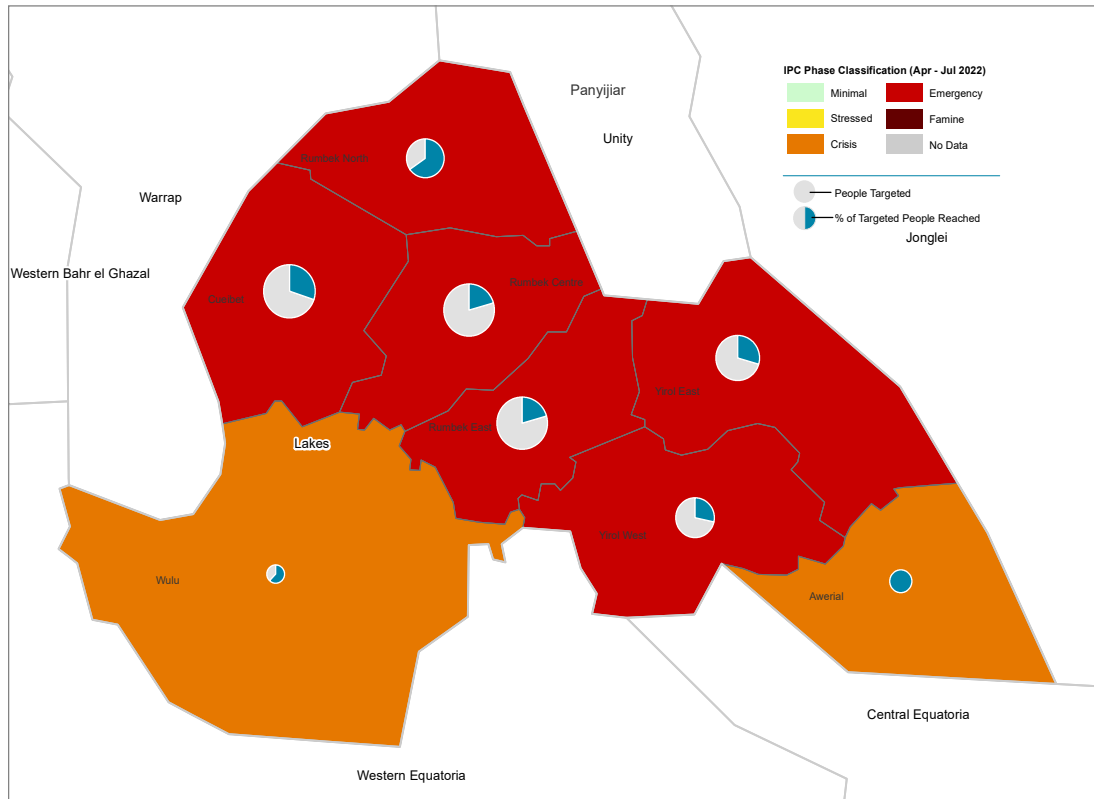


16
Partners

■ Food Assistance Target
 ■ Food Assistance Reached
 — Food Assistance Gap



| County | Food Assistance Target | Food Assistance Reach | Food Assistance Gap |
|------------|------------------------|-----------------------|---------------------|
| Akobo | 128,000 | 45,154 | 65% |
| Ayod | 126,118 | 68,020 | 46% |
| Bor South | 64,527 | 43,149 | 33% |
| Canal-Pigi | 71,836 | 11,564 | 84% |
| Duk | 79,615 | 41,247 | 48% |
| Fangak | 181,833 | 53,466 | 71% |
| Nyirol | 73,257 | 61,185 | 16% |
| Pibor | 182,284 | 124,506 | 32% |
| Pochalla | 15,882 | 4,800 | 70% |
| Twic East | 62,058 | 8,364 | 87% |
| Uror | 127,348 | 88,498 | 31% |



856,400
People in Need



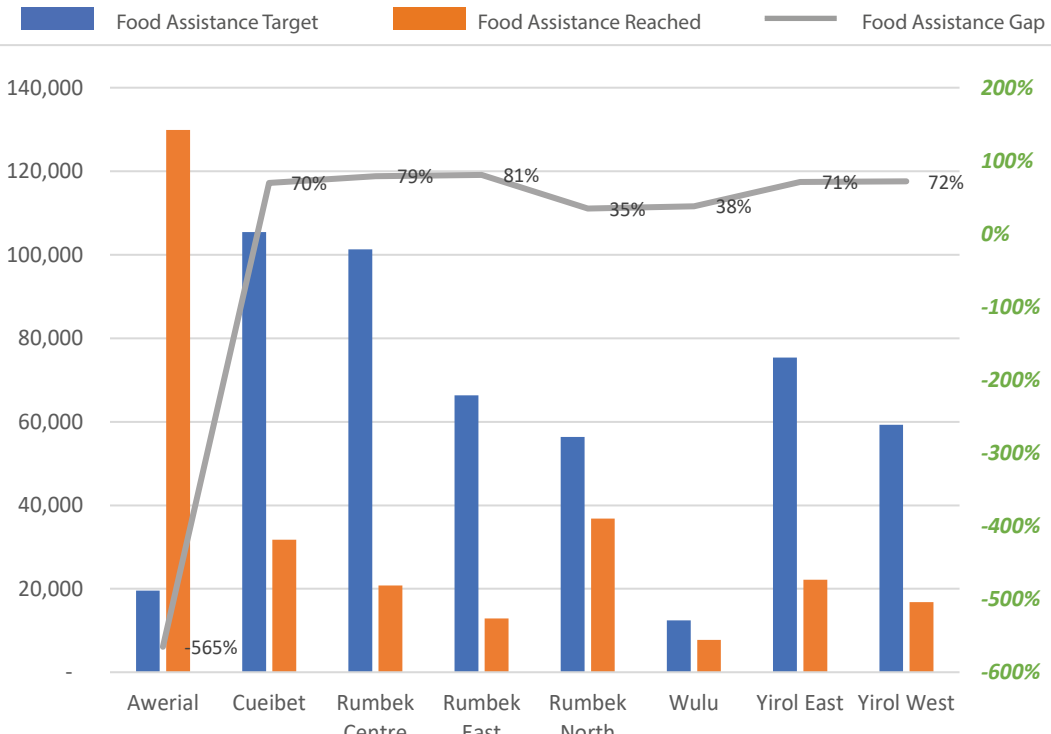
496,153
People Targeted



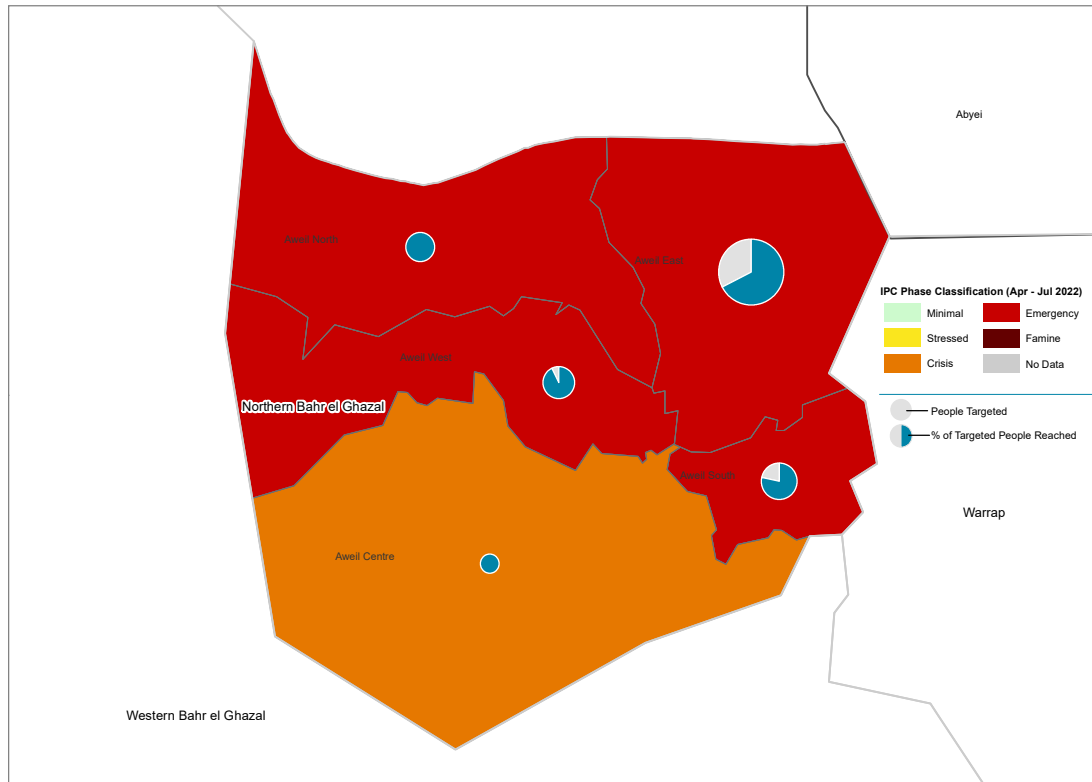
278,943
People Reached



7
Partners



**In Awerial, target population does not take in long term conflict and flood affected IDPs.



587,984

People in Need



306,758

People Targeted



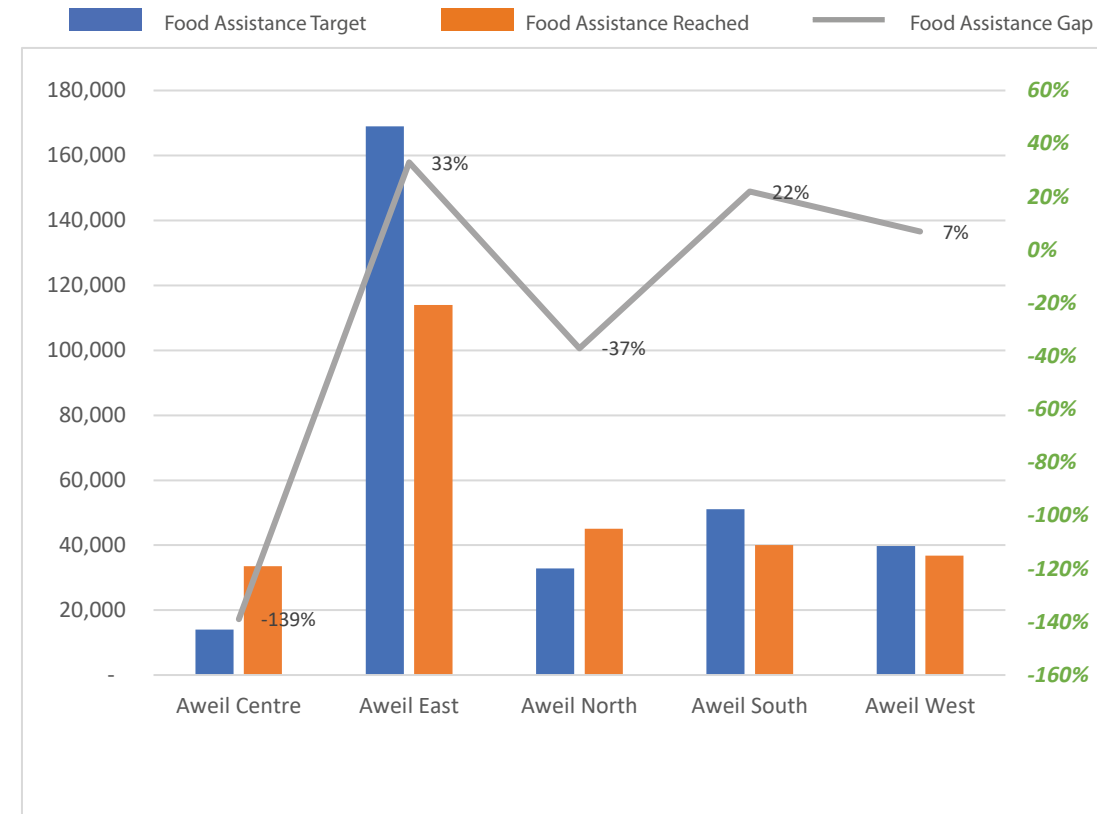
269,439

People Reached

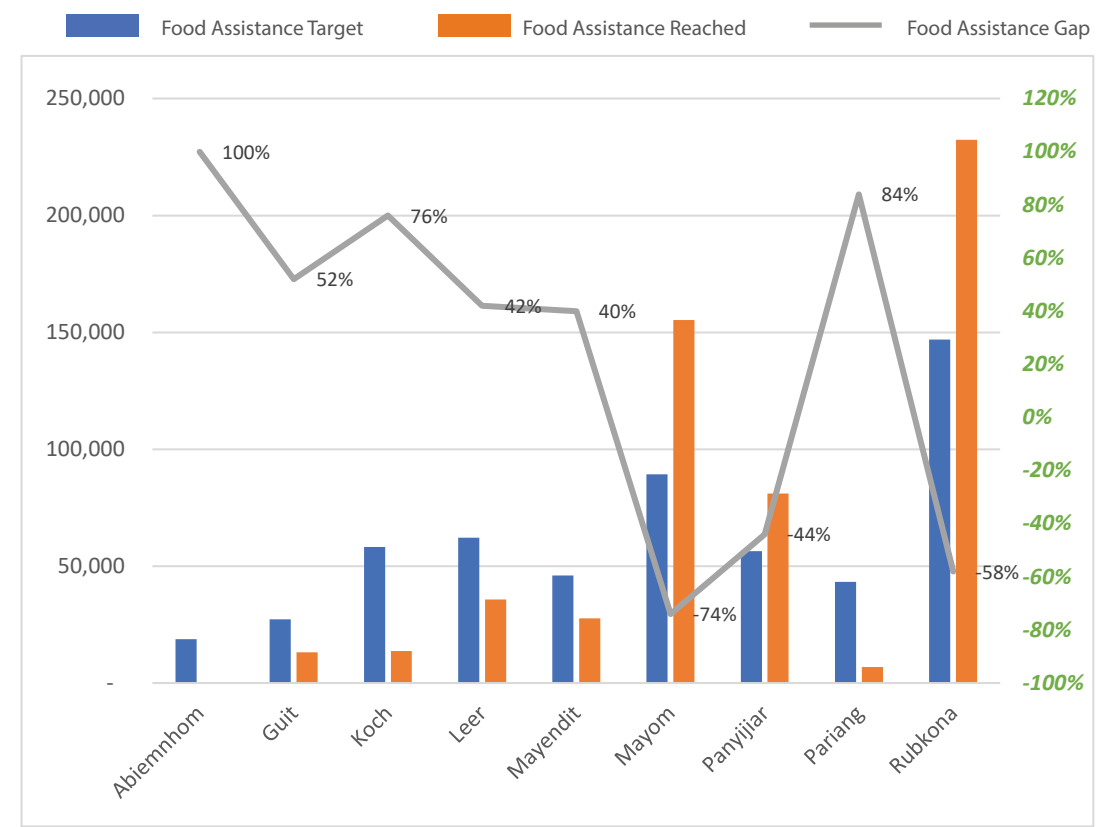
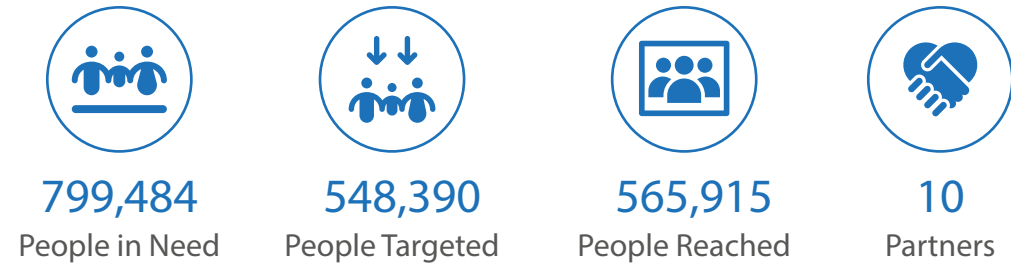
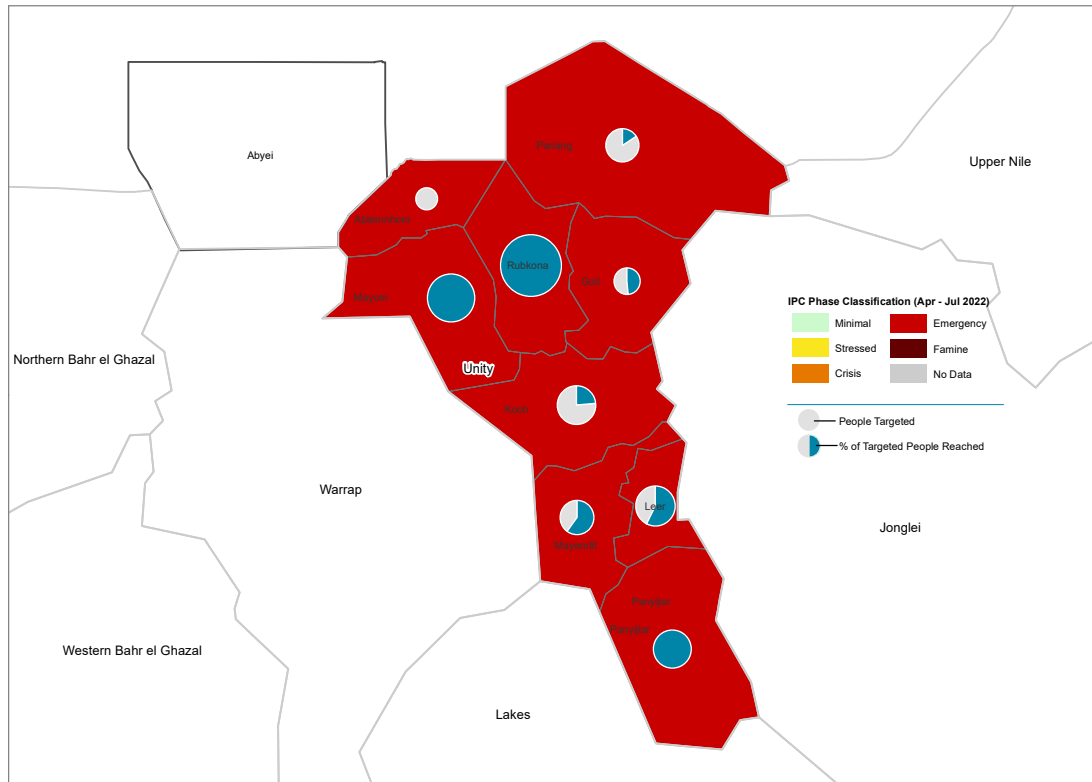


10

Partners



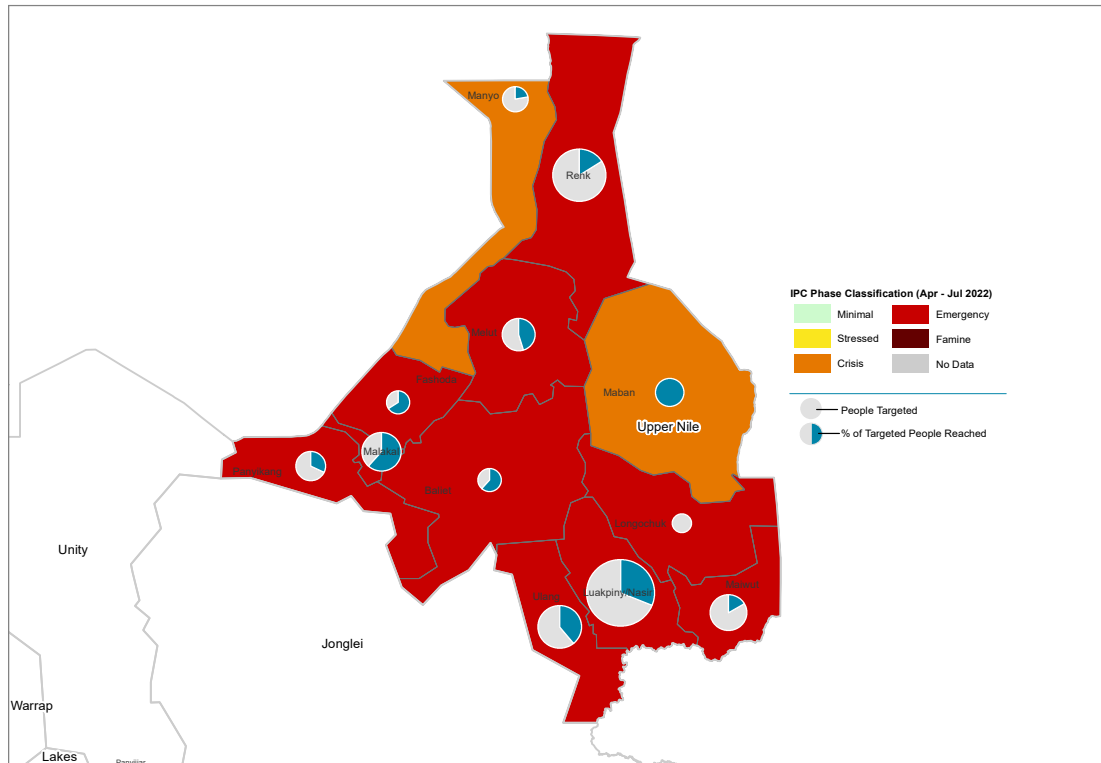
| County | Food Assistance Target | Food Assistance Reach | Food Assistance Gap |
|--------------|------------------------|-----------------------|---------------------|
| Aweil Centre | 14,055 | 33,545 | -139% |
| Aweil East | 168,994 | 114,000 | 33% |
| Aweil North | 32,856 | 45,082 | -37% |
| Aweil South | 51,101 | 39,997 | 22% |
| Aweil West | 39,752 | 36,815 | 7% |



| County | Food Assistance Target | Food Assistance Reach | Food Assistance Gap |
|-----------|------------------------|-----------------------|---------------------|
| Abiemnhom | 18,804 | - | 100% |
| Guit | 27,254 | 13,213 | 52% |
| Koch | 58,212 | 13,689 | 76% |
| Leer | 62,131 | 35,736 | 42% |
| Mayendit | 46,021 | 27,675 | 40% |
| Mayom | 89,319 | 155,239 | -74% |
| Panyijiar | 56,416 | 81,026 | -44% |
| Pariang* | 43,282 | 6,897 | 84% |
| Rubkona | 146,951 | 232,440 | -58% |

*Gap for local population only. 83,263 Refugees reached with Hybrid (In-kind & cash) in Pariang

Partners: CORDAID, DRC, IRC, NPA, NRC, RCDI, SP, UNIDO, WHH, WFP



1,119,204
People in Need



675,922
People Targeted

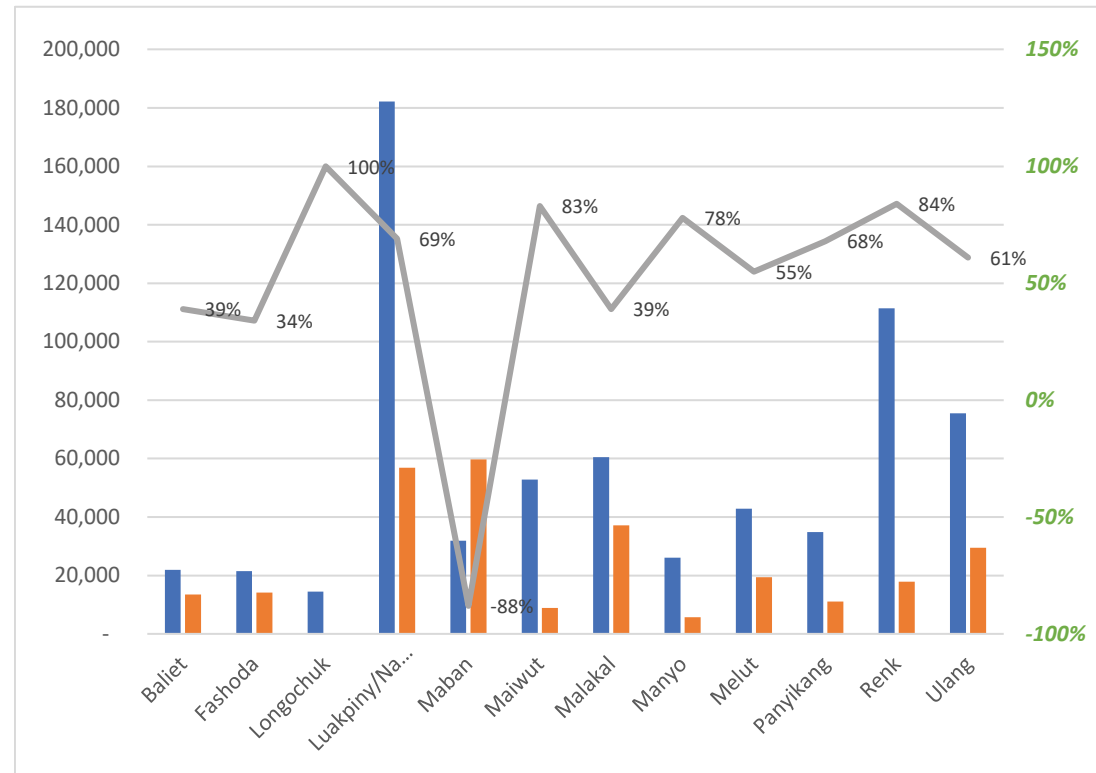


273,989
People Reached



9
Partners

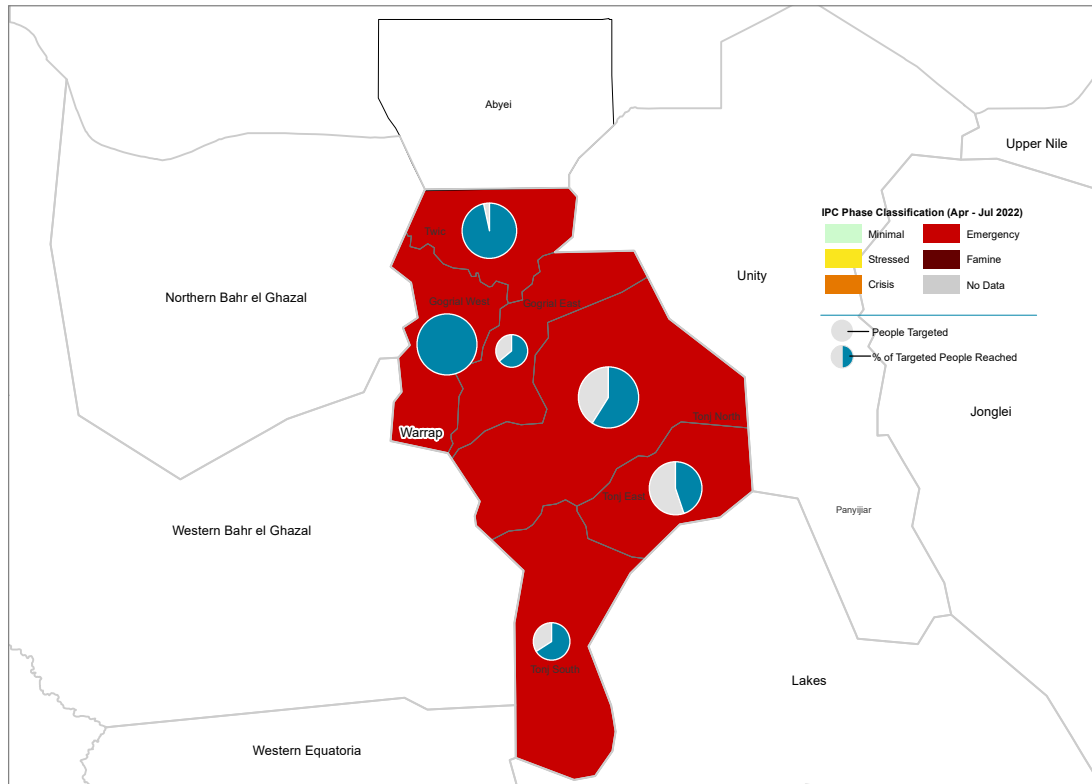
Food Assistance Target (Blue bar), Food Assistance Reached (Orange bar), Food Assistance Gap (Grey line)



| County | Food Assistance Target | Food Assistance Reach | Food Assistance Gap |
|----------------|------------------------|-----------------------|---------------------|
| Baliet | 21,947 | 13,492 | 39% |
| Fashoda | 21,459 | 14,147 | 34% |
| Longochuk | 14,518 | 14,518 | 100% |
| Luakpiny/Nasir | 182,152 | 56,827 | 69% |
| Maban* | 31,855 | 59,741 | -88% |
| Maiwut | 52,854 | 8,906 | 83% |
| Malakal | 60,499 | 37,205 | 39% |
| Manyo | 26,048 | 5,747 | 78% |
| Melut | 42,853 | 19,433 | 55% |
| Panyikang | 34,802 | 11,129 | 68% |
| Renk | 111,428 | 17,902 | 84% |
| Ulang | 75,507 | 29,460 | 61% |

*Figures for local population only. 175,312 Refugees reached with Hybrid(In-kind & cash) in Maban.

Partners: DCA, ACTED, CMD, HDC, NRDC, NH, SP, WFP, WVI



846,117
People in Need



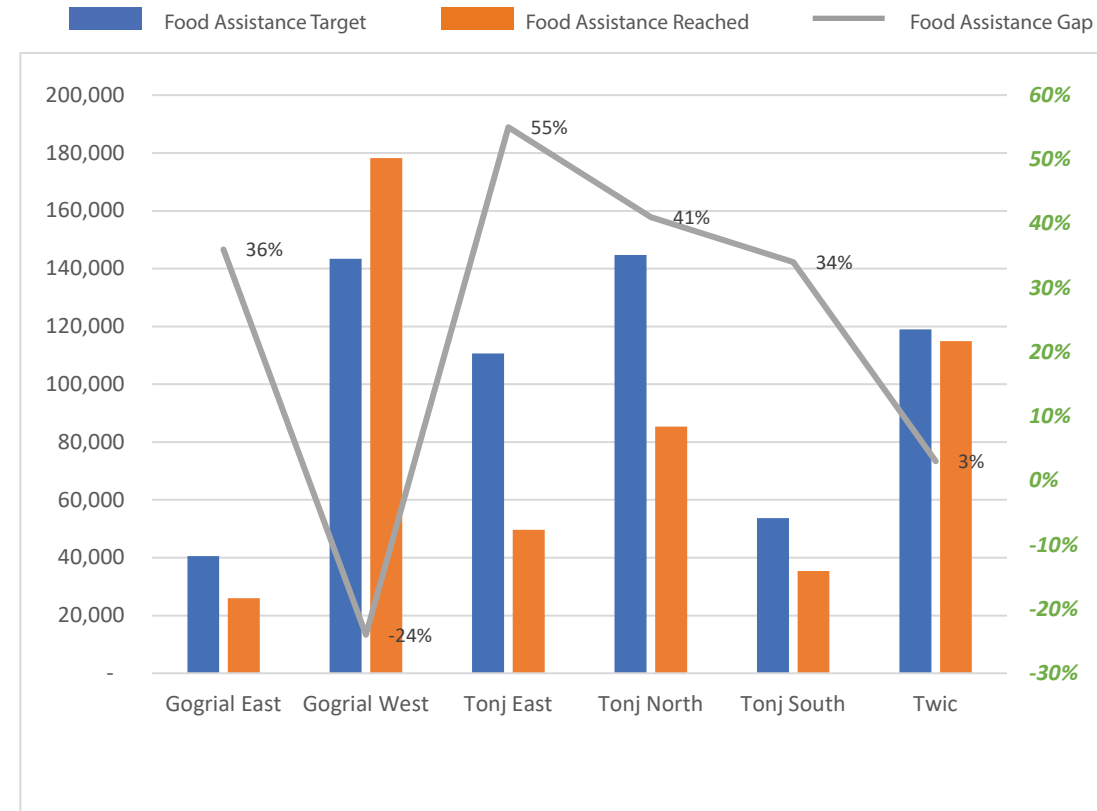
612,001
People Targeted



489,659
People Reached



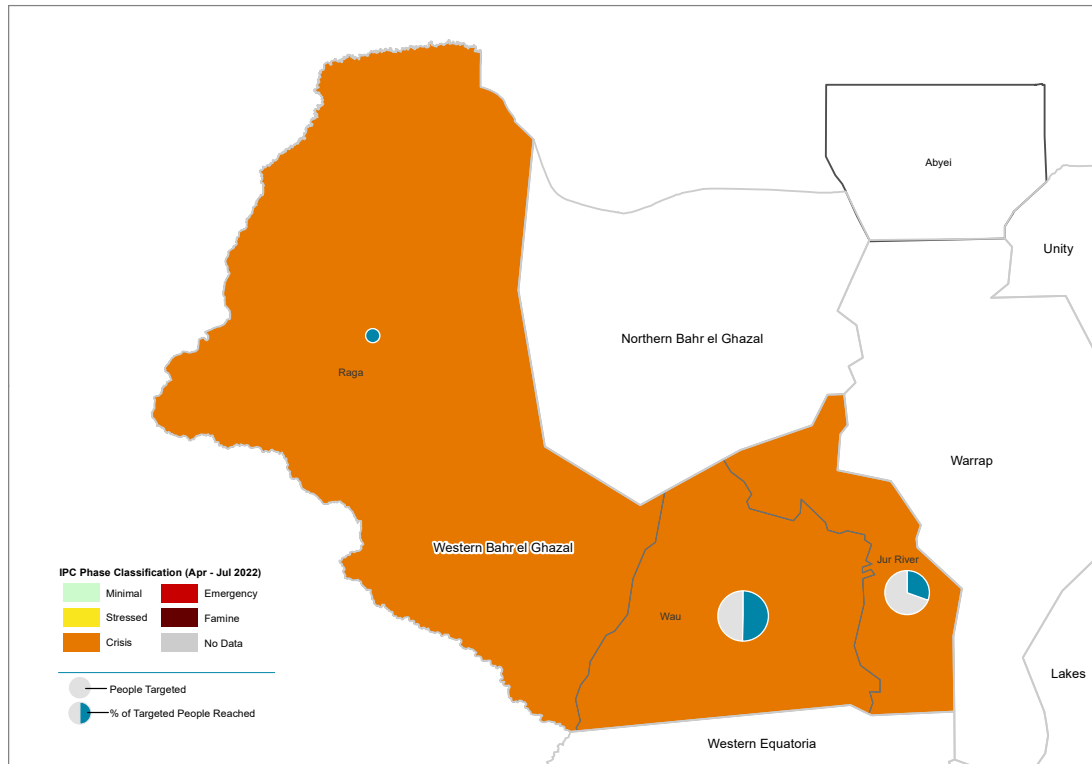
11
Partners



| County | Food Assistance Target | Food Assistance Reach | Food Assistance Gap |
|--------------|------------------------|-----------------------|---------------------|
| Gogrial East | 40,573 | 26,010 | 36% |
| Gogrial West | 143,405 | 178,297 | -24% |
| Tonj East | 110,644 | 49,614 | 55% |
| Tonj North | 144,674 | 85,347 | 41% |
| Tonj South | 53,720 | 35,429 | 34% |
| Twic | 118,985 | 114,962 | 3% |

In Abyei Region, 54,144 people reached.

Partners: ACAD, ADRA, IRW, JAM, MSF, NRC, SAO, SAADO, WDA, WFP, WVI



388,033
 People in Need



189,786
 People Targeted



106,739
 People Reached

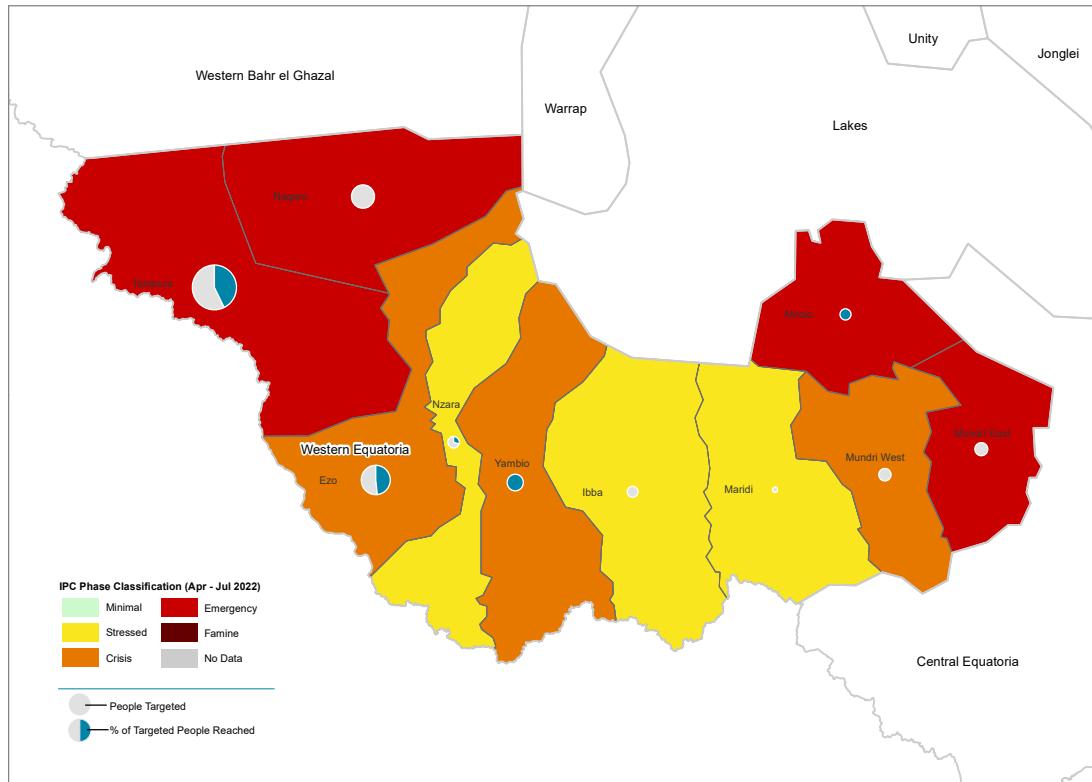


4
 Partners



| County | Food Assistance Target | Food Assistance Reach | Food Assistance Gap |
|-----------|------------------------|-----------------------|---------------------|
| Jur River | 79,304 | 24,213 | 69% |
| Raja | 8,036 | 30,942 | -285% |
| Wau | 102,446 | 51,584 | 50% |

Partners: AD, ACTED, WFP, Zoadorcas



393,731
 People in Need



171,532
 People Targeted

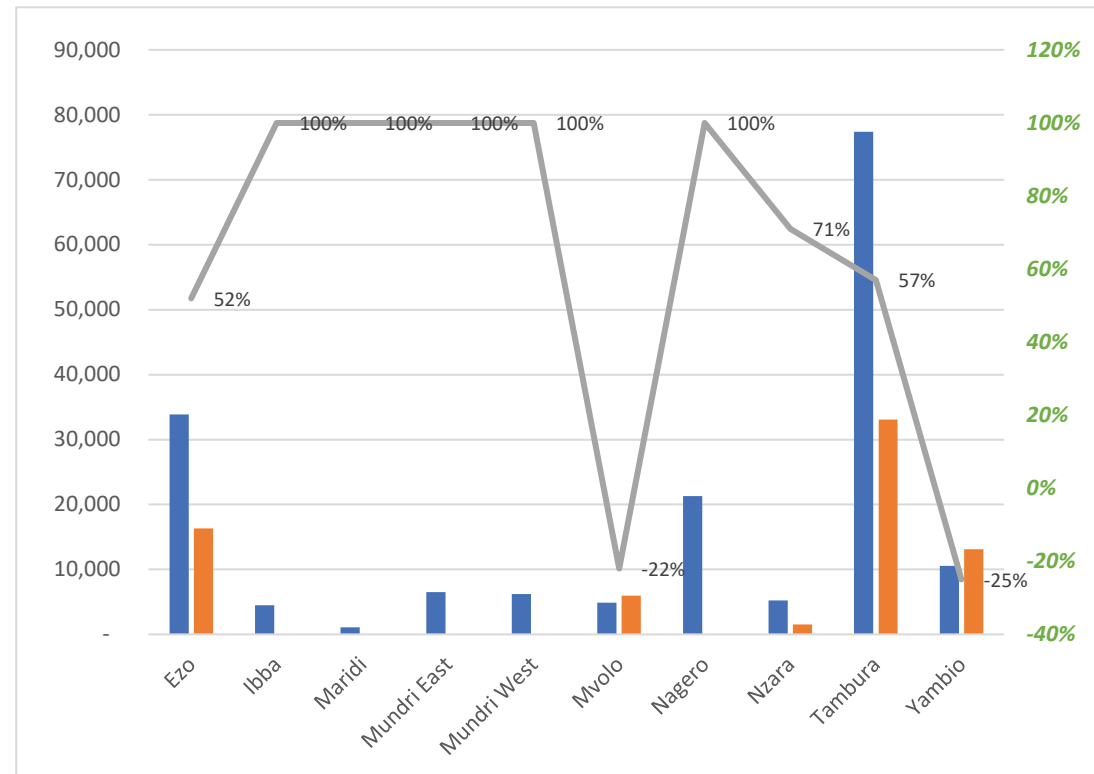


70,052
 People Reached



4
 Partners

■ Food Assistance Target
 ■ Food Assistance Reached
 — Food Assistance Gap



| County | Food Assistance Target | Food Assistance Reach | Food Assistance Gap |
|-------------|------------------------|-----------------------|---------------------|
| Ezo | 33,850 | 16,321 | 52% |
| Ibba | 4,483 | | 100% |
| Maridi | 1,103 | | 100% |
| Mundri East | 6,506 | | 100% |
| Mundri West | 6,209 | | 100% |
| Mvolo | 4,888 | 5,957 | -22% |
| Nagero | 21,315 | | 100% |
| Nzara | 5,225 | 1,539 | 71% |
| Tambura | 77,419 | 33,097 | 57% |
| Yambio* | 10,534 | 13,138 | -25% |

* Figures for local population only. 7,853 Refugees reached with Cash/Voucher in Yambio
 Partners: GRDA, RDAA, WFP, WVI