

2022 HUMANITARIAN NEED OVERVIEW SOUTH SUDAN

AT A GLANCE

People in Need

PEOPLE IN NEED

8.9M

Including refugees

TREND (2017-2022)



WOMEN

24%

CHILDREN

53%

WITH DISABILITY

15%

Severity of needs

MINIMAL

12%

STRESS

19%

SEVERE

42%

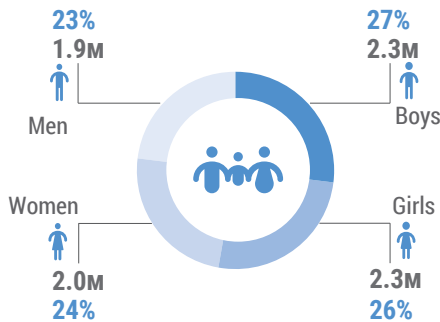
EXTREME

16%

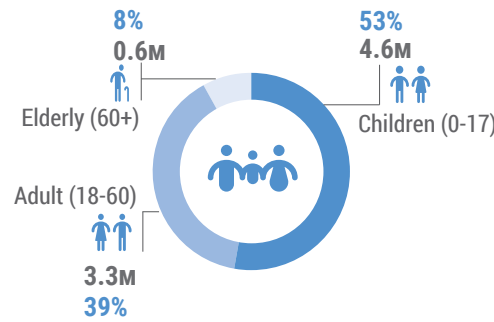
CATASTROPHIC

11%

PiN by Gender



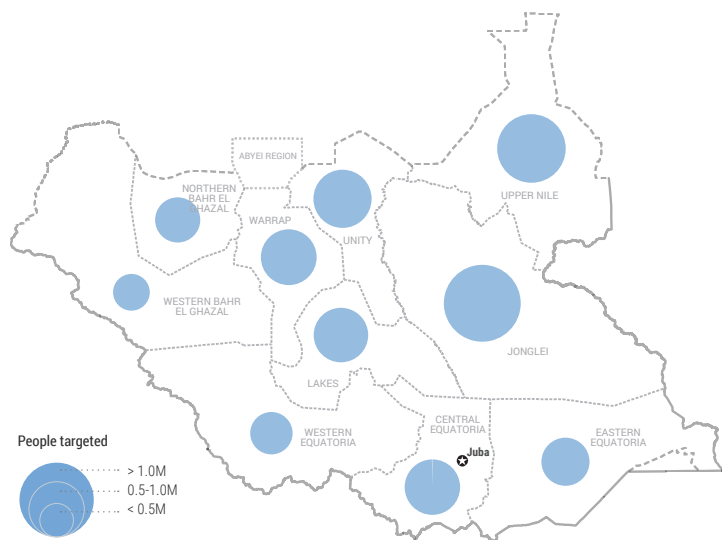
PiN by Age group



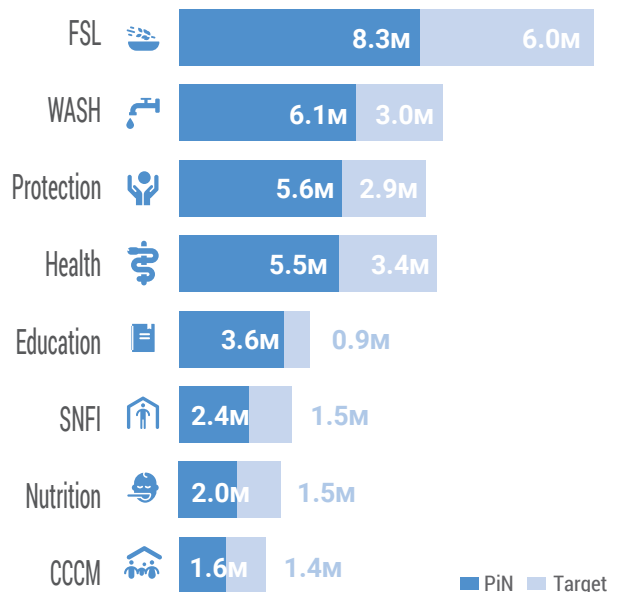
PiN by Population groups

IDPs		1.4M
Returnees		1.2M
Refugees		350k
PWDs		1.3M

2022 Inter-sectoral PiN by State



2022 Sectoral PiN and Target



The administrative boundaries and names shown and the designations used on this map do not imply official endorsement or acceptance by the United Nations. Final boundary between the Republic of Sudan and the Republic of South Sudan has not been determined. Final Status of Abyei area is not yet determined. | Gender and age disaggregation information does not include refugees. | UNHCR recently updated their projections for the expected number of refugees based on a recent verification assessment. This projected number of refugee for 2022 is 350K, an increase from the numbers reflected in the 2022 HNO.