

FSLC Monthly Meeting

Contact:

charles.hopkins@fao.org

&

info.ukraine@fscluster.org

28 October 2021



Photo: Charitable Foundation "Caritas Donetsk"

Agenda



UKRAINE
FOOD SECURITY & LIVELIHOODS CLUSTER
Strengthening Humanitarian Response

1. Self-introduction
3. Monthly partners' update
3. Presentation. "DRC Livelihoods Programming – Systemic Interventions"
4. Presentation of FSLC Q3 2021 dashboard
5. Presentation of FSLC 2022 People in Need caseload and target
6. AOB



Partners' update



Presentation
DRC Livelihoods Programming - Systemic Interventions



UKRAINE

FOOD SECURITY & LIVELIHOODS CLUSTER

Strengthening Humanitarian Response

Presentation of FSLC Q3 2021 dashboard

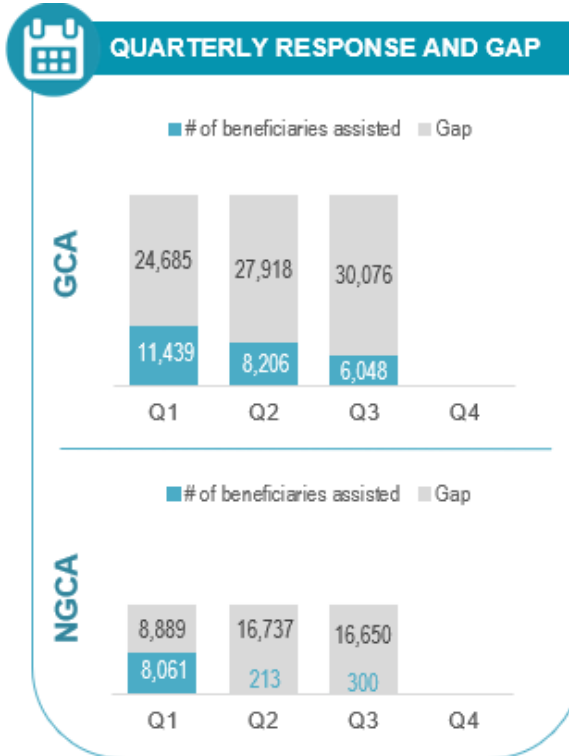
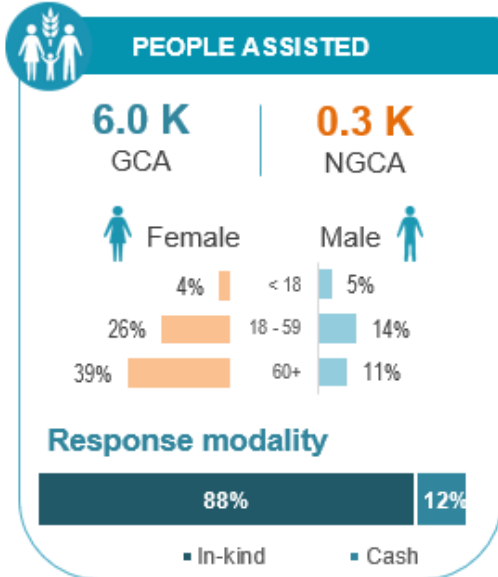


UKRAINE

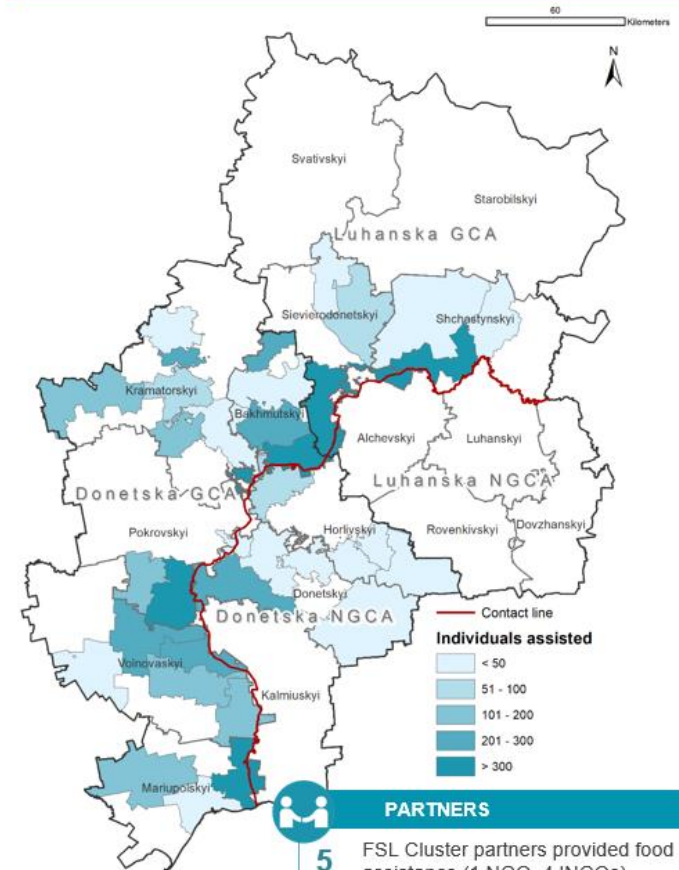
FOOD SECURITY & LIVELIHOODS CLUSTER

Strengthening Humanitarian Response

Cluster Objective 1. ENSURE IMMEDIATE ACCESS TO FOOD



PEOPLE ASSISTED BY HROMADA

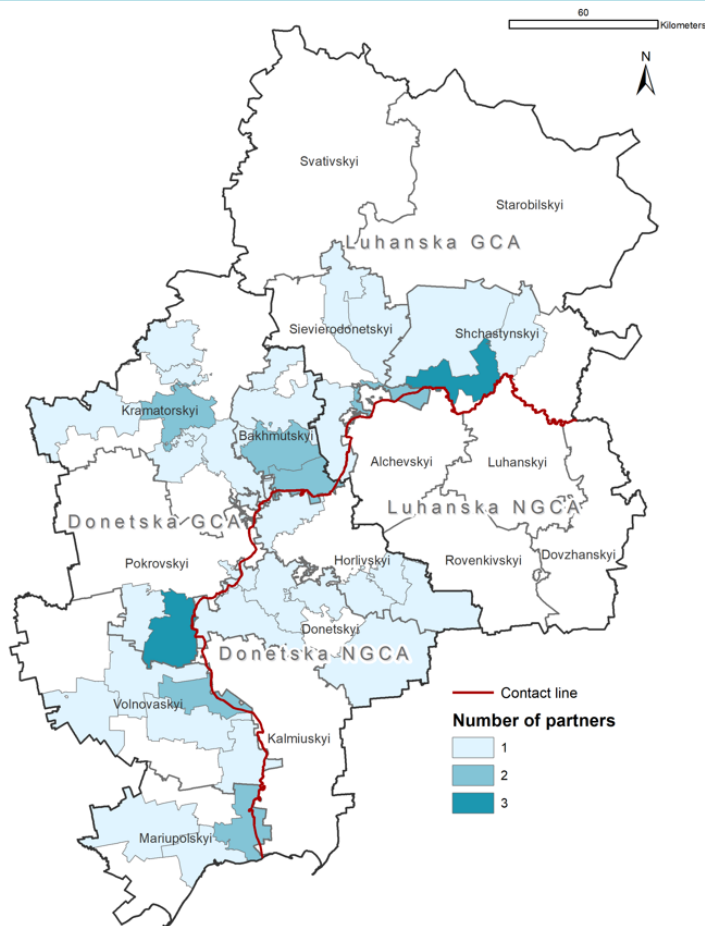




PARTNERS

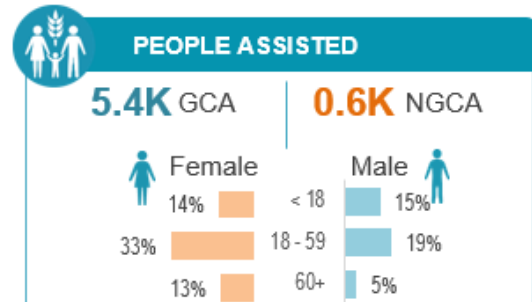
5 FSL Cluster partners provided food assistance (1 NGO, 4 INGOs)

Donetska GCA	Partners
Bakhmutskiy raion	
Bakhmutska	Emmanuel, Proliska
Chasovoivarska	Proliska
Siverska	Emmanuel
Soledarska	Emmanuel
Svitlodarska	Caritas, Emmanuel
Toretska	Emmanuel
Kramatorskiy	
Druzhkivska	Emmanuel
Kostiantynivska	Proliska
Kramatorska	Emmanuel, Proliska
Oleksandrivska	Emmanuel
Slovianska	Emmanuel
Sviatohirska	Emmanuel
Mariupolskiy	
Mariupolska	Emmanuel
Nikolska	Emmanuel
Sartanska	Caritas, Emmanuel
Pokrovskiy	
Avdiivska	Caritas
Kurakhivska	Proliska
Marinska	ACTED, Caritas, Emmanuel
Volnovaskiy	
Myrnska	Emmanuel
Olhynska	Caritas, Proliska
Staromlynivska	Caritas
Volnovaska	Emmanuel
Vuhledarska	Emmanuel

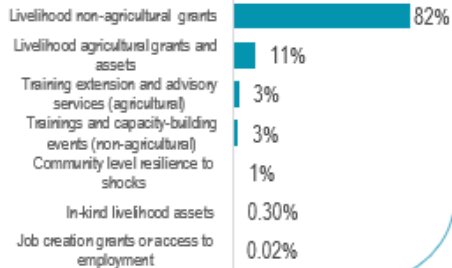


Luhanska GCA	Partners
Shchastynskiy	
Novoaidarska	Emmanuel
Nyzhnoteplivska	Caritas
Shchastynska	ACTED, Caritas, Emmanuel
Sievierodonetskiy	
Hirska	ACTED, Caritas
Popasnianska	Emmanuel
Rubizhanska	Emmanuel
Sievierodonetska	Emmanuel

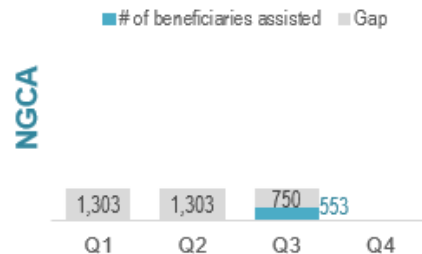
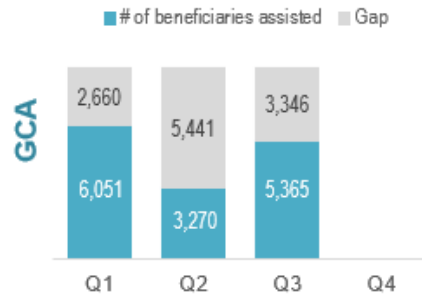
Donetska NGCA	Partners
Donetskiy	
Amvrosvivska	
Donetska	
Khartsyzka	1 FSLC partner
Makiivska	
Yasynuvatska	
Horlivskiy	
Chystiakivska	
Horlivska	1 FSLC partner
Horlivska	
Shakhtarska	



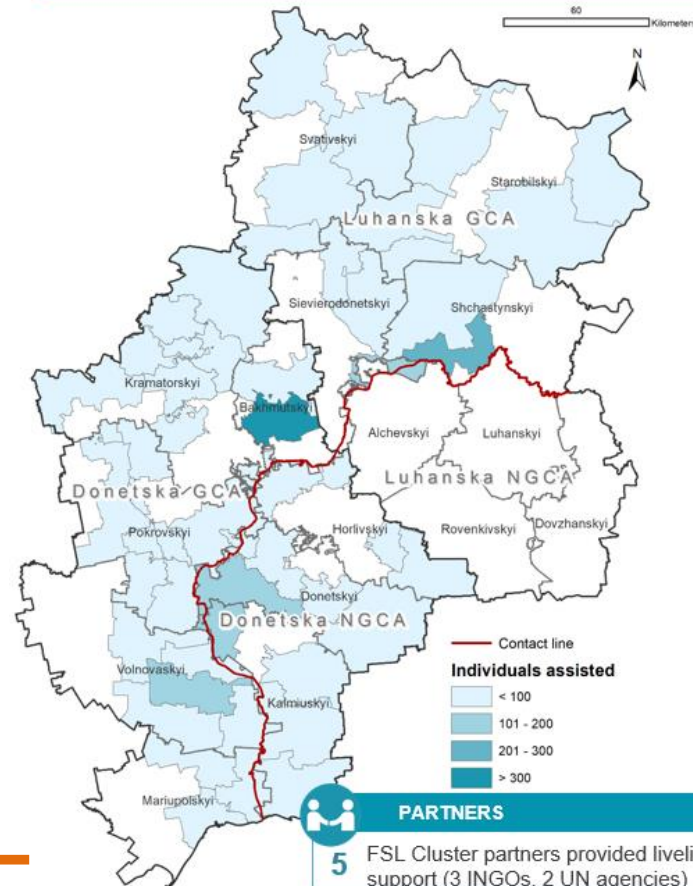
Response modality



QUARTERLY RESPONSE AND GAP

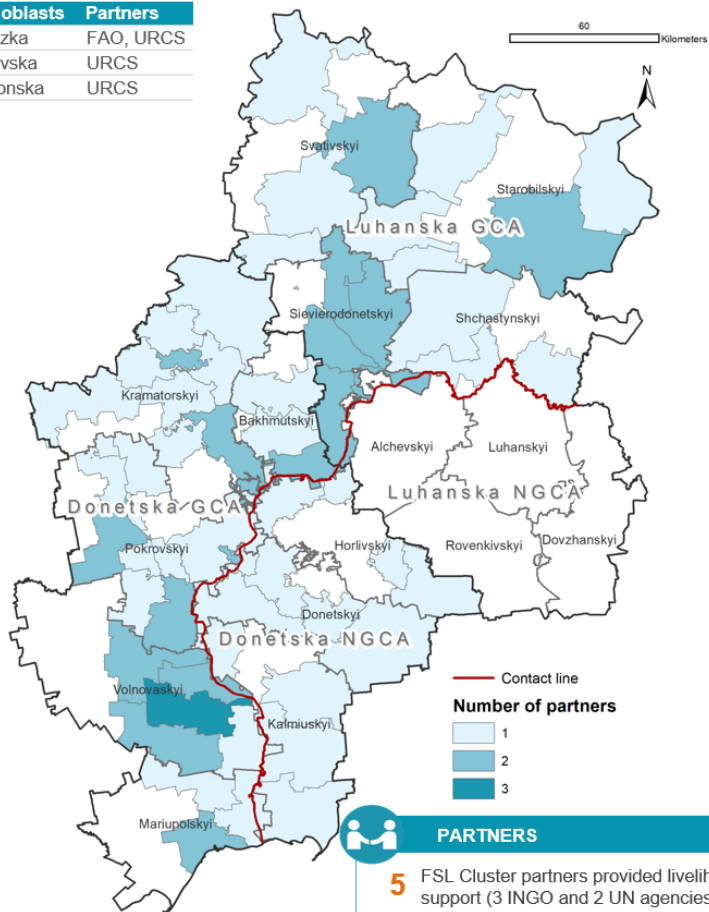


PEOPLE ASSISTED BY HROMADA



Donetska GCA	Partners
Bakhmut'skyi raion	
Bakhmut'ska	NRC
Soledarska	FAO
Svitlodarska	DRC, NRC
Toretska	DRC, NRC
Kramatorskyi	
Cherkaska	IOM
Druzhkiv'ska	DRC
Kostiantyniv'ska	DRC, NRC
Kramatorska	DRC
Lymanska	DRC
Mykolaiv'ska	DRC
Oleksandriv'ska	FAO
Slovianska	DRC, FAO
Sviatohir'ska	DRC
Mariupol'skyi	
Kalchytska	DRC
Mariupol'ska	DRC, FAO
Sartanska	DRC
Pokrov'skyi	
Avdiiv'ska	DRC, NRC
Bilozerska	DRC
Dobropil'ska	DRC
Kurakhiv'ska	IOM
Marinska	DRC, NRC
Myrnograd'ska	DRC
Novohrodiv'ska	DRC
Ocheretyn'ska	NRC
Pokrov'ska	DRC, FAO
Selydiv'ska	FAO
Shakhiv'ska	FAO
Volnovaskyi	
Khlibodariv'ska	DRC, FAO
Myrmenska	NRC
Olhyn'ska	DRC, NRC
Volnovaska	DRC, FAO, NRC
Vuhledarska	DRC, NRC

Other oblasts	Partners
Zaporizka	FAO, URCS
Kharkiv'ska	URCS
Kherson'ska	URCS



Luhanska GCA	Partners
Shchastyn'skyi	
Novoaidarska	NRC
Shchastyn'ska	NRC
Stanychno-Luhanska	NRC
Sievierodonetskyi	
Hir'ska	DRC, NRC
Lysychanska	DRC, NRC
Popasnianska	DRC, NRC
Rubizhanska	DRC, FAO
Sievierodonetska	DRC, NRC
Starobil'skyi	
Bilovodska	DRC, FAO
Milov'ska	FAO
Novopovskova	IOM
Shulhyn'ska	FAO
Starobil'ska	DRC
Svativ'skyi	
Bilokurakyn'ska	DRC, IOM
Krasnorichenska	DRC
Svativ'ska	FAO
Troitska	FAO

Donetska NGCA	Partners
Donetskyi	
Amvrosviv'ska	
Donetska	
Ilovaiska	1 FSLC partner
Makiiv'ska	
Yasynuvatska	
Horliv'skyi	
Chystiakiv'ska	
Debal'tiv'ska	1 FSLC partner
Horliv'ska	
Snizhnianska	
Kalmiuzkyi	
Boikiv'ska	
Dokuchaiev'ska	
Kalmiuzka	1 FSLC partner
Novoazov'ska	



PARTNERS

5 FSL Cluster partners provided livelihood support (3 INGO and 2 UN agencies)

FSLC 2022 People in Need caseload and target



UKRAINE

FOOD SECURITY & LIVELIHOODS CLUSTER

Strengthening Humanitarian Response

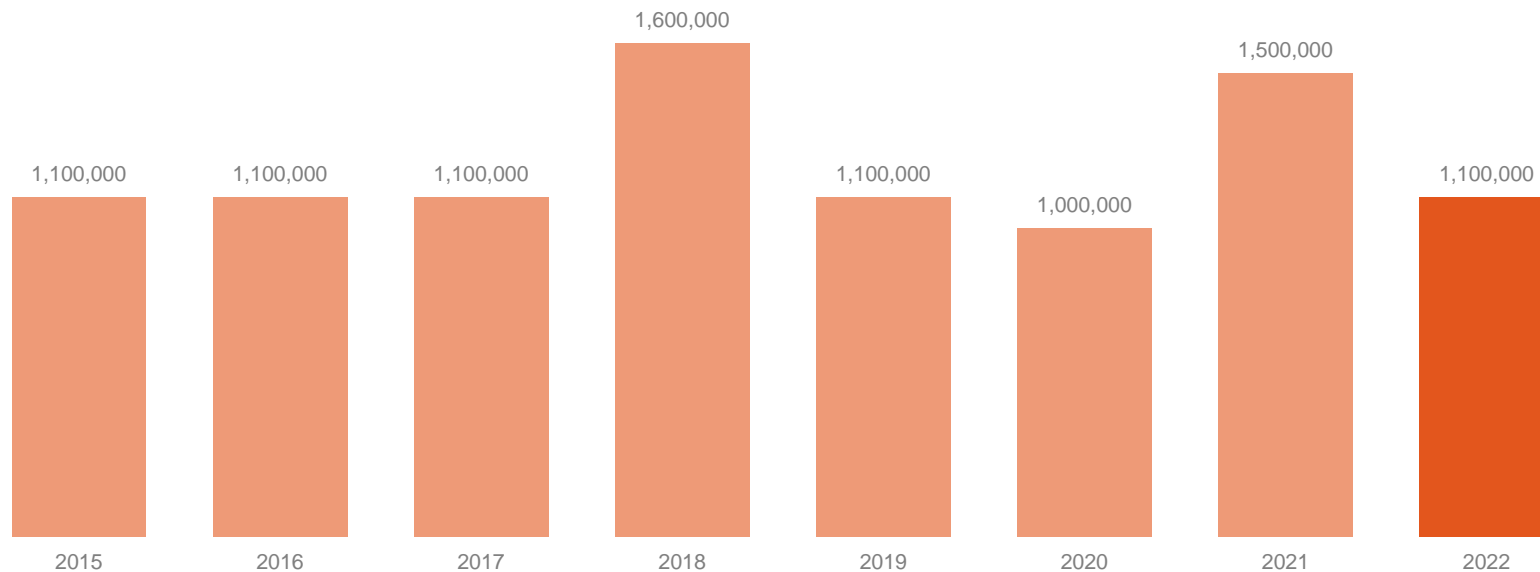
FSLC PiN figures 2021 – 2022 comparison



	2021 Number of PiN	Growth rate Compared to 2021	2022 PiN*
GCA	432,000	-47%	279,000
NGCA	997,000	-16%	835,000
IDPs	92,000	-82%	17,000
Total	1,521,000	-26%	1,131,000
	<ul style="list-style-type: none"> ■ GCA ■ NGCA ■ IDPs 		

* Approach discussed with the FSLC SAG and partners

Dynamics of PiN number



* Preliminary result. TBC with the SAG and partners
Data source: Humanitarian Needs Overview

Why the PiN number dropped



Food Consumption Score Dynamics: data and consultation with partners in the field provided evidence to shift more to livelihoods.



The economy is recovering (5.4% of GDP growth in Q2 2021 compared to Q2 2020)



Did not take IDPs outside of the Eastern Conflict Area

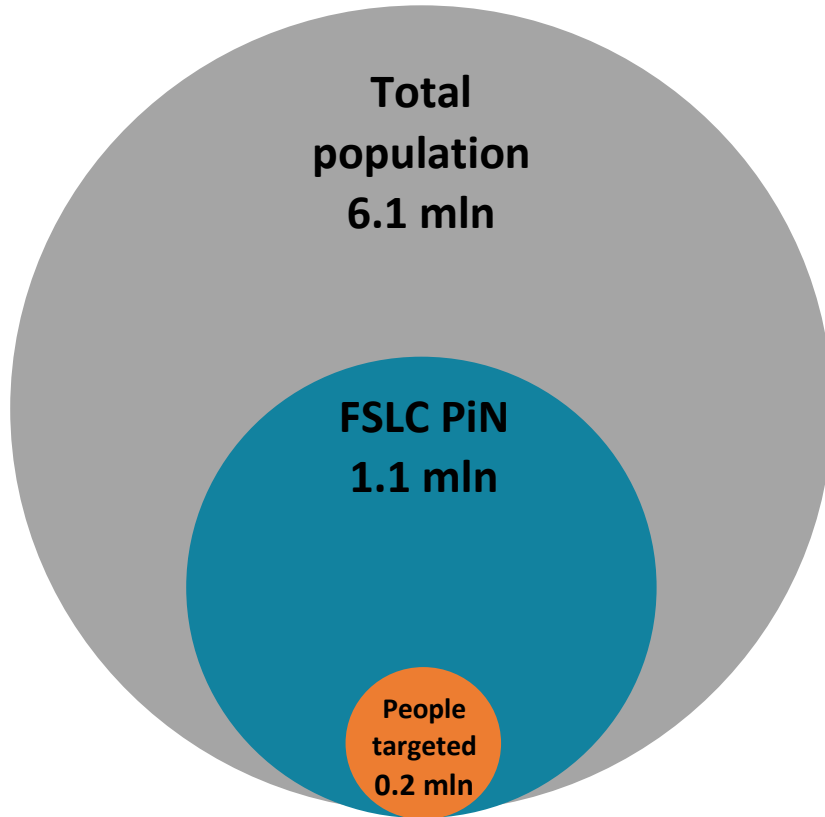


Changes in methodologies in MSNA: geographical coverage, methodology of FCS





Population baseline figures revised

FSLC 2022: people in need and targeted



	2022 People in Need	2022 People Targeted	% of PiN
GCA	279,000	67,000	24%
NGCA	835,000	130,000	16%
IDPs	17,000	5,000	29%
Total	1,131,000	202,000	18%







FSLC Targeting Logic 2022

CLUSTER STRATEGIC OBJECTIVE	TARGET LOGIC	INDICATOR
 <p><i>Immediate access to food</i> Ensure immediate access to food for food insecure people through life-saving assistance</p>	<ul style="list-style-type: none">• 100% in severely food insecure population• 40% moderately food insecure population in rural communities• 10% moderately food insecure population in urban communities	Food Security Index, Food Insecurity Experience Scale
 <p><i>Improve living standard, restore livelihoods</i> Strengthen vulnerable conflict-affected households' self-reliance and contribute to the economic capacity by protecting and restoring agricultural and non-agricultural livelihoods</p>	<ul style="list-style-type: none">• 40% in severely food insecure of rural population• 40% in moderately food insecure of rural communities• 25% in moderately food insecure of urban communities	Food Security Index, Livelihood coping strategy, Food Expenditure Share

FSLC Targeting Logic 2022



Unit-based targeting focuses on actual humanitarian needs based on analysis. FSLC also considered the following:

-  Institutional capacity in the country
-  Humanitarian access and insecurity – FSLC predicts limited humanitarian access will persist in 2022 in NGCA
-  The cluster considered the proportion of the needs met in the previous years
-  Proportion of people FSLC can realistically cover in 2022 outside those met by the government and non-HRP actors
-  FSLC found a compromise and balance between the needs and the capacity, but the question remains - **will FSLC have the capacity if funding is increased? Yes, partners will have the capacity to scale up should the resource be available**
-  FSLC will communicate with non-HRP actors regarding 2022 response and generally with partners about carry over funds in 2022.

FSLC activities – HRP 2022 Costing



FSL Cluster Objective	Number of people targeted	Costing
CO1: Ensure immediate access to food for food insecure people through life-saving assistance	108,000	19.5 M
CO2: Strengthen vulnerable conflict-affected households' self-reliance and contribute to the economic capacity by protecting and restoring agricultural and non-agricultural livelihoods	98,000 (about 46,000 households)	10.2 M
Total	202,000	29.7 M

Why the targeted number increased



The humanitarian community shifted from project-based costing (as a sum of projects submitted by partners) to activity-based costing that reflects not only existing partners capacity, but also humanitarian needs.



2022 targeting figure reduces the discrepancy between FSLC PiN and targeted numbers that took place: in 2021, the FSLC targeted 80K people out of 1.5 mln PiN



The FSLC has more data in 2021 compared to previous years particularly after 2018



The FSLC plans to increase investment in livelihoods.



The FSLC plans to involve other actors to ensure smooth humanitarian-development nexus

FSLC activities – HRP 2022 Costing



FSL Cluster Objective	Activities	Number of people targeted
<p>CO1: Ensure immediate access to food for food insecure people through life-saving assistance</p>	<ul style="list-style-type: none"> 1.1. Food distribution/home distribution (in-kind) 1.2. Wet feeding/daily meal (in-kind) 1.3. Food voucher (FV) 1.4. Unconditional cash transfer (UCT) 	<p>108,000</p>
<p>CO2: Strengthen vulnerable conflict-affected households' self-reliance and contribute to the economic capacity by protecting and restoring agricultural and non-agricultural livelihoods</p>	<ul style="list-style-type: none"> 2.1. Agricultural inputs (seeds and basic tools) and grants 2.2. Livestock and poultry (distribution + treatment + feeding) 2.3. Rehabilitation of community livelihood assets, including cash and food for work modalities 2.4. Trainings (agricultural and non-agricultural) + extension services + capacity-building events 2.5. Provision of livelihood agricultural and non-agricultural grants and assets 2.6. Income generation activities (at community level, agricultural and non-agricultural) 2.7. Job creation grants (enterprise level) or access to employment 2.8. Business grants 2.9. Value chains management and support for conflict-affected households 2.10. Technical Vocational Education Training (TVET) 2.11. Cooperative support in conflict-affected communities 	<p>98,000 (about 46,000 households)</p>

Photo: ©FAO/Viktoriia Mykhalchuk



Thank you!



UKRAINE
FOOD SECURITY & LIVELIHOODS CLUSTER
Strengthening Humanitarian Response