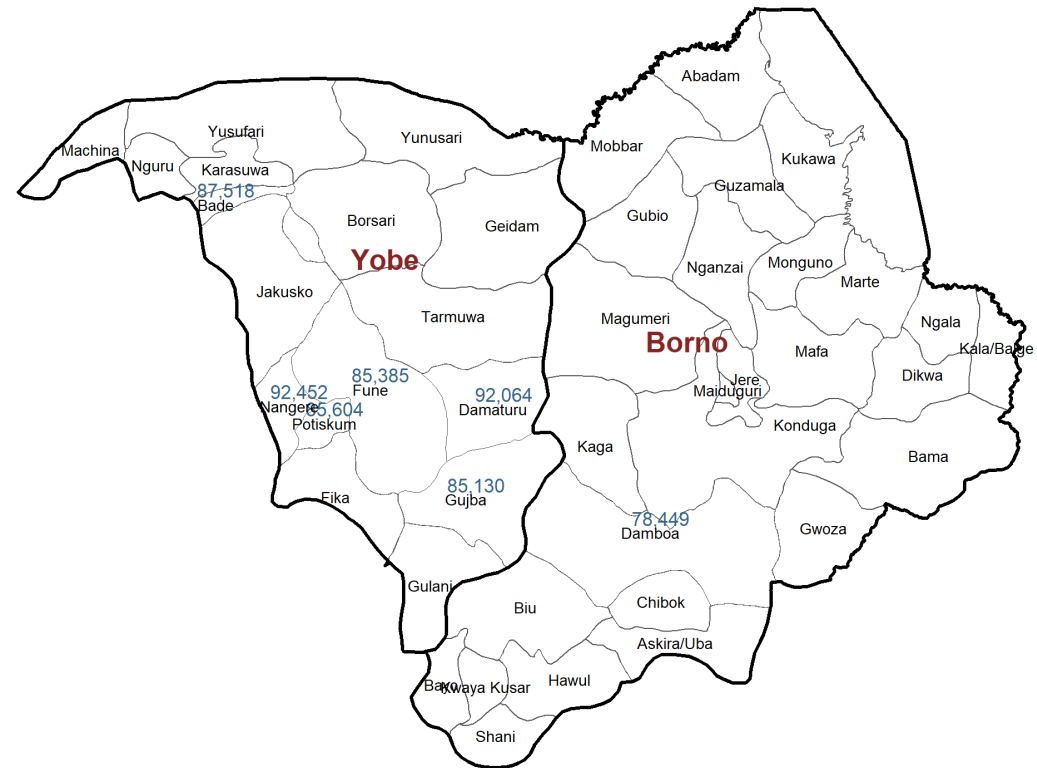




SMEB (100%) per Market Location in BAY States April 2024



Highlights

- The food inflation index increased to 40.53 percent in April from 40.01 percent in March 2024 with a difference of 0.52 percent due to an increase in the prices of some food items¹. In April 2024, the official Naira/Dollar exchange rate closed at ₦1329.7 against the dollar with some stability when compared to the previous month. In the parallel market, the naira depreciated by 7.1 percent (₦1270/\$1 to ₦1360/\$1) in April 2024. This brings the total year-on-year (April 2023 to April 2024) depreciation of the Naira to about 81.3 percent.
- Between March and April, the value of **70% of the cost of a Survival Minimum Expenditure Basket (SMEB)** for a family of five increased by 4% in Damaturu in Yobe State. The April value of 70% of the cost of SMEB for a family of five in Damboba LGA in Borno State represents a decrease of 7% when compared to the previous month. Please refer to *Table 3* for the SMEB values in other LGAs of the BAY states.
- In April, petroleum pump prices were observed to still be on the rise across various outlets. Fuel prices were seen to be highest in Damboba LGA of Borno State with an average price of 1,200 naira per litre, while the lowest price was observed in Potiskum LGA in Yobe State with an average pump price of 735 naira per litre. In comparison to the previous month, Damboba LGA in Borno State witnessed a 48 percent increase from an average price of 810 naira to 1,200 naira per litre. Please refer to *Table 5* for fuel prices in other LGAs of the BAY states.

Survival Minimum Expenditure Basket (SMEB)

TABLE 1: SMEB calculated for 5 households members in Damaturu markets for one month without the ₦2000 for Firewood

Food Item	gms/day/pp	Kc/day/pp	gms/HH/day	gms/HH/month	Kg/HH/month	Price/Kg-Naira(MPM)	Price/HH/month-Naira
Rice	150	540	750	22500	22.5	1410	31,725.00
Maize	250	913	1250	37500	37.5	840	31,500.00
Beans	75	255	375	11250	11.25	1350	15,188.00
Palm Oil	10	88	50	1500	1.5	1600	2,400.00
Groundnuts	15	85	75	2250	2.25	1060	2,385.00
Sugar	10	39	50	1500	1.5	2070	3,105.00
G/nut Oil/ Veg Oil	20	177	100	3000	3	1733	5,199.00
Salt	5	0	25	750	0.75	150	112.00
Onion	8	3	40	1200	1.2	375	450.00
Total		2100					92,064.00
Cost of food basket at 70%		1470					64,444.80
Per Capita based on 70% transfer value							12,888.96

TABLE 2: SMEB calculated for 5 households members in Damboa markets for one month without the ₦2000 for Firewood

Food Item	gms/day/pp	Kc/day/pp	gms/HH/day	gms/HH/month	Kg/HH/month	Price/Kg-Naira(MPM)	Price/HH/month-Naira
Rice	150	540	750	22500	22.5	1200	27,000.00
Maize	250	913	1250	37500	37.5	600	22,500.00
Beans	75	255	375	11250	11.25	1320	14,850.00
Palm Oil	10	88	50	1500	1.5	1467	2,200.00
Groundnuts	15	85	75	2250	2.25	920	2,070.00
Sugar	10	39	50	1500	1.5	2400	3,600.00
G/nut Oil/ Veg Oil	20	177	100	3000	3	1867	5,601.00
Salt	5	0	25	750	0.75	150	112.00
Onion	8	3	40	1200	1.2	429	515.00
Total		2100					78,448.00
Cost of food basket at 70%		1470					54,913.60
Per Capita based on 70% transfer value							10,982.72

Trend in the Cost of 70% SMEB - Damaturu, and Damboa February 2023 to April 2024

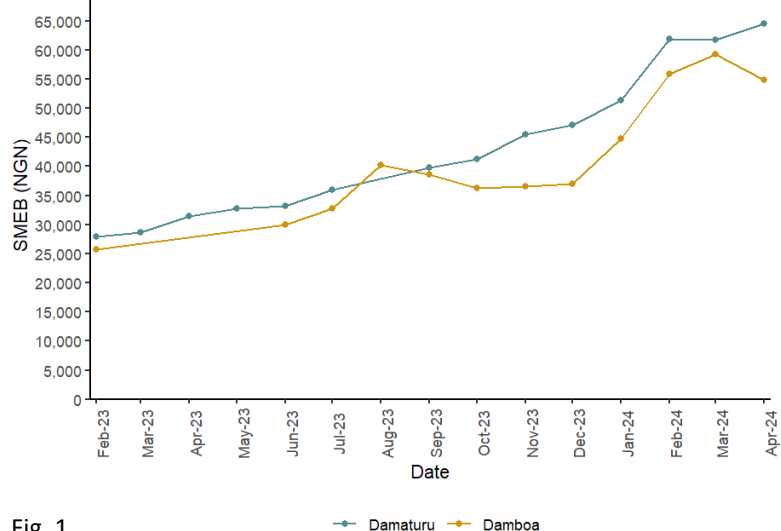


Fig. 1

source: WFP, RAM 2024

Monitoring the prices of food commodities, is essential to understand market functionalities, as well as inform cash based interventions by providing accurate local information on changes in prices. On this premise, WFP undertakes a weekly monitoring of food commodities to gauge how vulnerable and market-dependent households are affected by food price changes and the resulting impact of such changes on the cost of the food basket.

WFP partners monitored a total of 7 markets across 7 LGAs in the April 2024 bulletin. Of these, 1 market was in Borno and the remaining 6 markets, in Yobe State.

Table 3 presents the SMEB values for various LGAs during the month of April 2024, revealing **Nangere LGA in Yobe State with the highest SMEB value (₦92,452)**, followed closely by Damaturu LGA (₦92,064), and Bade LGA (₦87,518) in Borno State. On the other hand Damboa LGA in Borno State had the lowest SMEB value (₦78,449).

Despite the decrease in the cost of SMEB seen in Damboa LGA in Borno State, and Nangere LGA in Yobe State on a month-on-month basis, most of the LGAs monitored in April experienced a marginal increase in the cost of SMEB. **The highest is seen in Potiskum LGA in Yobe State with an 11 percent month-on-month increase from ₦77,209 in March to ₦85,604 in April 2024.**

Compared to three months ago, the cost of SMEB for a family of 5 was seen to experience an increase as high as **48 percent in Potiskum LGA in Yobe State**. This is followed closely by Gujba LGA (35 percent), and Fune LGA (32 percent) both in Yobe State.

Generally, food prices have continued to rise across all monitored markets in Borno and Yobe states. This can be attributed to the increased cost of transportation of foodstuffs across the country. The observed food price increase would likely affect the capacity of market dependent households to meet food needs.

TABLE 3: SURVIVAL MINIMUM EXPENDITURE BASKET (SMEB) ACROSS WFP OPERATIONAL AREAS IN BAY STATES APRIL 2024

STATE	LGA	Reference Market	100% Total Food MEB for HH Size 5	100% Per Capita HH Size 5	70% Total Food MEB for HH Size 5	70% Per Capita HH Size 5	% Change in SMEB (1 month)	% Change in SMEB (3 months)
Borno	Damboa	Damboa Market	78,449	15,690	54,914	10,983	-7.2	22.8
Yobe	Bade	Gashua Market	87,518	17,504	61,262	12,252	5.7	26.9
Yobe	Damaturu	Bayantasha Market	92,064	18,413	64,445	12,889	4.3	25.6
Yobe	Fune	Damagun	85,385	17,077	59,770	11,954	2.6	32.5
Yobe	Gujba	Gujba (Buni Yadi)	85,130	17,026	59,591	11,918	6.2	35.2
Yobe	Nangere	Dawasa Market	92,452	18,490	64,717	12,943	-4.4	23.9
Yobe	Potiskum	Potiskum Grains Market	85,604	17,121	59,923	11,985	10.9	48.0

Trends in the Cost of SMEB

- On a month-on-month basis, the cost of SMEB for a family of five in Damaturu increased by 4 percent. An increase of 26 percent is seen in SMEB value when compared to three months ago and, 105 percent when compared to the same time last year.
- The observed increase in the SMEB value is attributable to the increase in prices of key staples in the food basket which consist of local rice, ground nuts, maize and red beans.
- Despite the decrease seen in the cost of SMEB value in Damboa when compared to the previous month the observed m-o-m decrease was a result of a significant decline in the price of maize, local rice, and imported rice. However, an increase of 23 percent is observed when compared to three months ago.
- The increase in the cost of SMEB in Damboa LGA affects households' access to food by eroding the purchasing power of households, especially market dependent ones who spend a larger proportion of their disposable income and food assistance on meeting food needs.
- The average petroleum pump price is seen to be highest in Damboa LGA in Borno State with an average of ₦1,200 per litre; a sharp increase of 48 per cent from ₦810 in March 2024. This is followed closely by Fune LGA in Yobe State with an increase of 18 percent from ₦804 in March to ₦947 in April 2024.
- It is worthy to note that when compared to the previous month, an increase of 10 percent is observed in the average pump price in Damaturu with Bade, Nangere, and Potiskum LGAs in Yobe State all experiencing a 2 percent increase.

Table 4: April 2024 70% SMEB Comparison

	Current	MoM	3 Months ago
	Apr-24	Mar-24	Jan-24
SMEB Values			
Damaturu	₦ 64,445	₦ 61,766	₦ 51,324
Damboa	₦ 54,914	₦ 59,192	₦ 44,723
Percentage Change			
Damaturu		4	26
Damboa		-7	23

TABLE 5: April 2024 Fuel Price

State	Lga	Fuel Price (Naira)
Borno	Damboa	1,200
Yobe	Bade	748
Yobe	Damaturu	798
Yobe	Fune	947
Yobe	Gujba	756
Yobe	Nangere	748
Yobe	Potiskum	735

Trend in Average Fuel Prices (Litre) - Damaturu & Damboa
February 2023 to April 2024

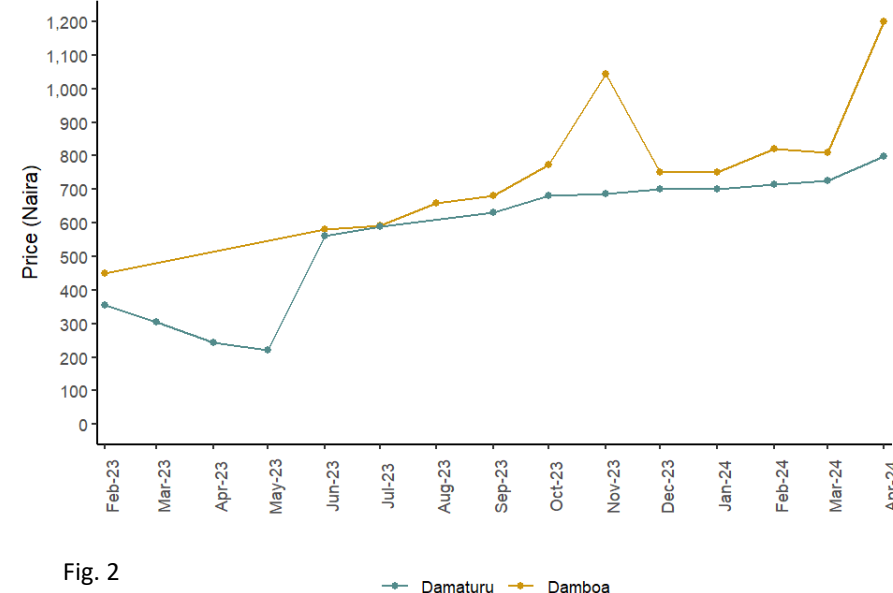


Fig. 2

source: WFP, RAM 2024

Trends in Key Staple Food Prices

Key Food Price Trends for Damaturu (Yobe)

February 2023 to April 2024

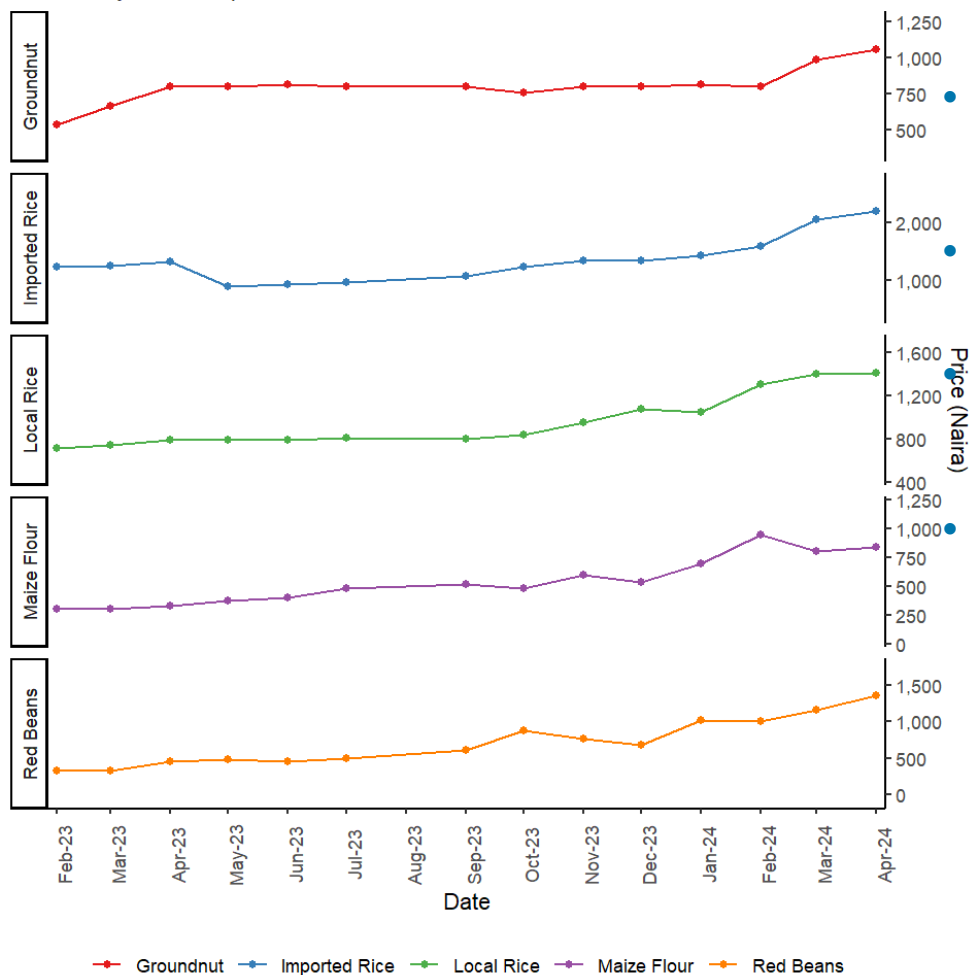


Fig. 3

source: WFP, RAM 2024

In Damaturu market, a marginal to substantial increase is seen in the price of red beans (16 percent), imported rice (7 percent), groundnuts (7 percent), and maize (5 percent) despite the stability seen in the price of local rice on a month-on-month basis.

It is important to note that when compared to three months ago, prices of all key staples in Damaturu market are seen to experience a substantial increase **as high as 35 per cent**. This is expected to accentuate food insecurity among the most vulnerable and market-dependent households.

Prices of all key staples are seen to experience a substantial increase as high as 200 per cent as seen with red beans in comparison to the same time the previous year in Damaturu market.

In Damboa, a decrease was seen in the prices of local rice, imported rice, and maize due to increased supply, on the other hand a marginal to substantial increase in the price of key staples, groundnuts (15 per cent), and red beans (10 percent) on a month-on-month basis.

In comparison to three months ago, the prices of key staples in Damboa market are seen to experience a substantial increase **as high as 40 percent**.

Markets	Food Item	Variation (%) compared to last month	Variation (%) compared to 3 months	Markets	Food Item	Variation (%) compared to last month	Variation (%) compared to 3 months
Damaturu	Maize	↔ 5%	↗ 17%	Damboa	Maize	↘ -18%	↗ 5%
	Red beans	↗ 16%	↗ 24%		Red beans	↘ 10%	↗ 32%
	Rice (Imported)	↔ 7%	↗ 35%		Rice (Imported)	↘ -4%	↗ 22%
	Rice (Local)	↔ 1%	↗ 26%		Rice (Local)	↘ -9%	↗ 24%
	Groundnuts	↗ 7%	↗ 23%		Groundnuts	↗ 15%	↗ 40%
Decrease							
Relative Stability							
Marginal Increase							
Substantial Increase							

Contact: Nsikak Udoh, nsikak.udoh@wfp.org

WFP Nigeria Research, Assessment and Monitoring Unit

<https://dataviz.vam.wfp.org>

