

## PEOPLE TARGETED – 2024 HRP

**4.4** Million People in Need  
(Projected Period: June – August 2024 - Population in Phase 3-5)

3 North-East States

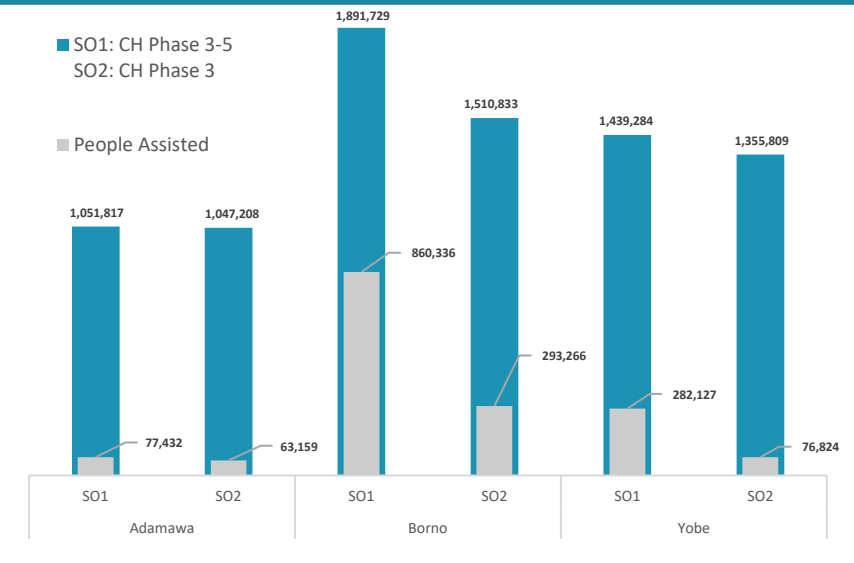
## FUNDING REQUIRED – 2024 HRP

**470\*** MILLION

\$339M Unmet  
\$333M Resourced

Data Source : FSS Sector through partners

## INTERVENTION BY STATE – SO1 & SO2



## SAFE ACCESS TO FUEL & ENERGY

supported with fuel efficient stoves, use/production of alternative energy, production of fuel-efficient stoves, and SAFE & protection awareness raising outreach

**SAFE**  
SAFE ACCESS TO FUEL AND ENERGY

Fuel-Efficient Stoves Distribution in Jere in Borno State to 1,500 households

## FOOD SECURITY OBJECTIVE 1: Food Assistance

**SO1 - Improve the most vulnerable crisis-affected people's access to timely and appropriate food assistance to meet their immediate food needs**

**2.8 M targeted**  
Population in Phase 3-5 (October 2023 Cadre Harmonisé for Projected Period: June – August 2024)

28% Target Reached (calculated on a monthly basis)

**1.2 M assisted**  
Number of people assisted under SO1 (In-Kind and Cash/Voucher)

**215,557** people assisted with In-Kind

**1,004,338** people assisted with Cash/Voucher

**22** Number of Partners who reported Food Assistance interventions including implementing partners

## FOOD SECURITY OBJECTIVE 2: Emergency Agriculture

**SO2 - Strengthen resilience of crisis-affected people by re-establishing, improving and diversifying key agriculture livelihoods**

**2.2M targeted**  
Population in Phase 3 (October 2023 Cadre Harmonisé for Projected Period: June – August 2024)

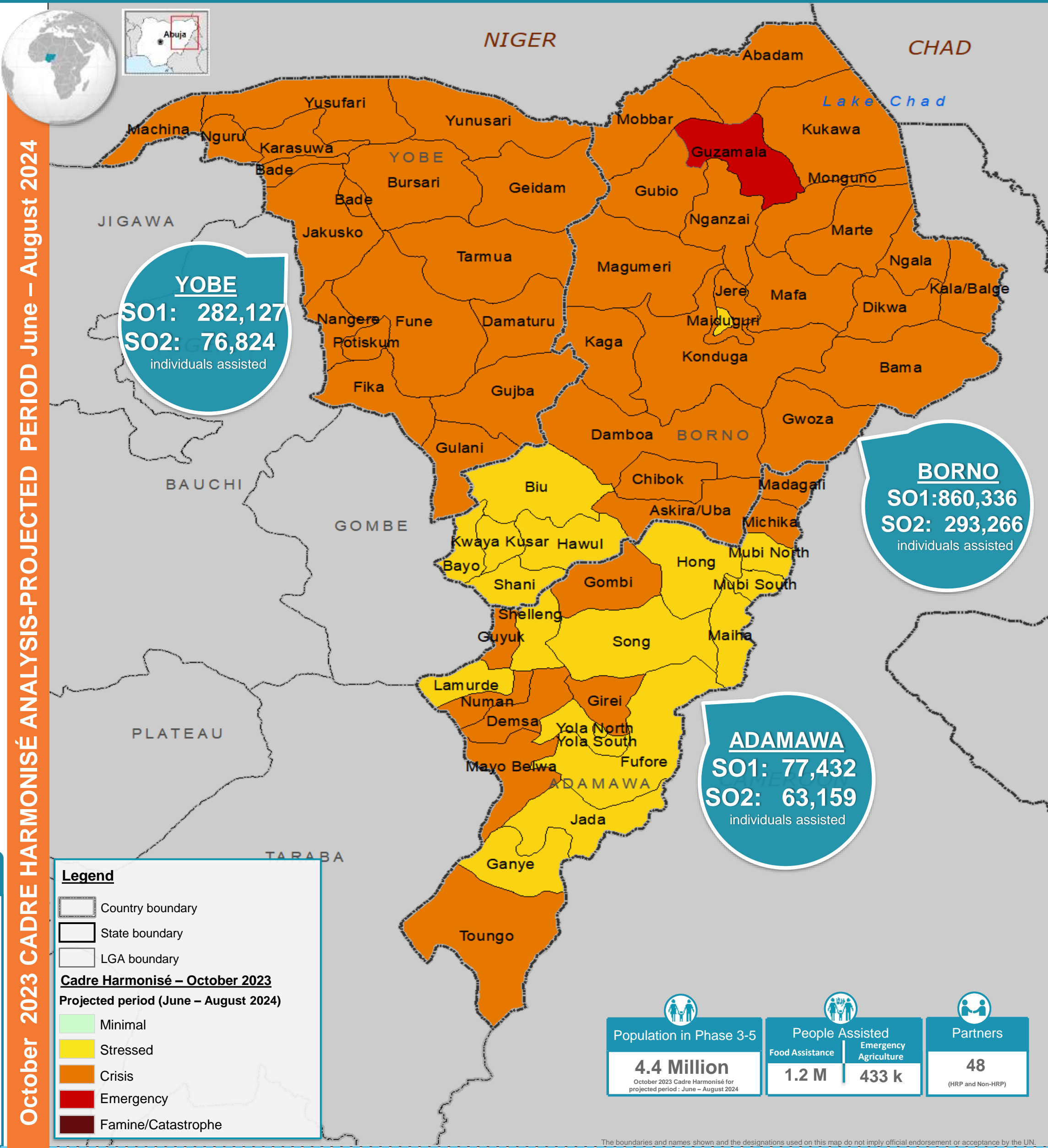
11% Target Reached (calculated on a yearly basis)

**433 k assisted**  
Number of people assisted under SO2 (In-Kind and Cash/Voucher)

**253,301** people assisted with In-Kind

**179,948** people assisted with Cash/Voucher

**39** Number of Partners who reported Agriculture and Livelihoods interventions including implementing partners



October 2023 CADRE HARMONISÉ ANALYSIS-PROJECTED PERIOD June – August 2024

**Legend**

- Country boundary
- State boundary
- LGA boundary

**Cadre Harmonisé – October 2023**  
Projected period (June – August 2024)

- Minimal
- Stressed
- Crisis
- Emergency
- Famine/Catastrophe

Population in Phase 3-5 <b>4.4 Million</b> <small>October 2023 Cadre Harmonisé for projected period: June – August 2024</small>	People Assisted Food Assistance <b>1.2 M</b>	Emergency Agriculture <b>433 k</b>	Partners <b>48</b> <small>(HRP and Non-HRP)</small>
---	--	---------------------------------------	---