



Welcome to DRM-ATF Monthly Cluster Meeting

March 28, 2024





Agendas:

1. Action points from previous meeting-**5 minutes**
2. Belg seasonal Update-**Esayas (MoA-DRM-ATF Chair)-15 minutes**
3. AAP inclusion in the Agriculture response-**Nicholas (OCHA)-15 minutes**
4. Regional Updates-**Shimeles (DRM-ATF)-15 minutes**
5. Information Updates/Agriculture monthly assessments-**Alex (DRM-ATF)/James (FAO)-15 minutes**
6. Cluster Updates (TWG plans, Anticipatory Action, EHF partners meeting, Partner presentation& Impact stories, FTS updates, NGO Co-Coordinator)-**Ntando (DRM-ATF)-15 minutes**
7. AOB-**10 minutes**



Belg Seasonal update

ATF

28/03/2024



ግብርና ሚኒስቴር
MINISTRY OF AGRICULTURE

Agriculture – Belg Season in Ethiopia



- During the Belg season in Ethiopia, significant planting activities take place across various Regions , including cereal crops, pulses crops, and oil crops.
- This period marks a crucial time for farmers to prepare their lands and sow seeds for these essential crops, which contribute significantly to the country's agricultural output and food security.
- Cereal crops, such as **teff, wheat, barley, and maize**, are commonly planted during the Belg season. These crops play a vital role in providing staple foods for the Ethiopian population and are integral to the country's agricultural economy.
- In addition to cereal crops, pulses crops are also planted during the Belg season like lentils, chickpeas, Faba Beans, Field Pease, Haricot beans.....
- Furthermore, the Belg season sees the planting of oil crops, which include crops like sesame, sunflower, Neug, Linseed and Groundnut. These oil crops are valuable for their oil extraction, providing essential cooking oils and contributing to the country's economy through exports.

Agricultural Activities in the Belg Season

1

Land Preparation

Farmers clear and till their fields in preparation for Belg season planting, which typically begins in March.



2

Sowing

Crops are sown during the March-April period, taking advantage of the onset of the Belg rains.



3

Harvesting

Belg crops are typically harvested from May to June, providing an important food and income source.



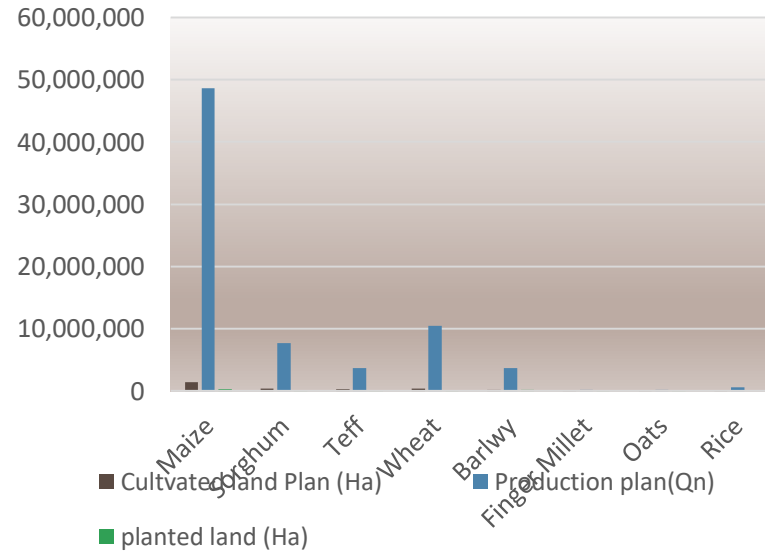
Belg Season Cropping Calendar

Region	Land Preparation	Sowing	Vegetative stage	Harvesting
Oromia	March	Half of march- April	April -Jun	Jun-July
Amhara	March	March-April	half of April -may	May-June
South Ethiopia	Jan-Feb	Feb- March	march-May	May-July
Central Ethiopia	Jan-Feb	Feb- March	march-May	May-Aug
Sidama	Feb- March	March-April	April-May	May-July
Southwest Ethiopia	Jan	Jan-Feb	Feb-April	May-July
Somali	Half of march- April	April -may	Jun-July	July-Oct...
Tigray	Feb- March	March-April	April-May	May -Jun

1

Cereal crop

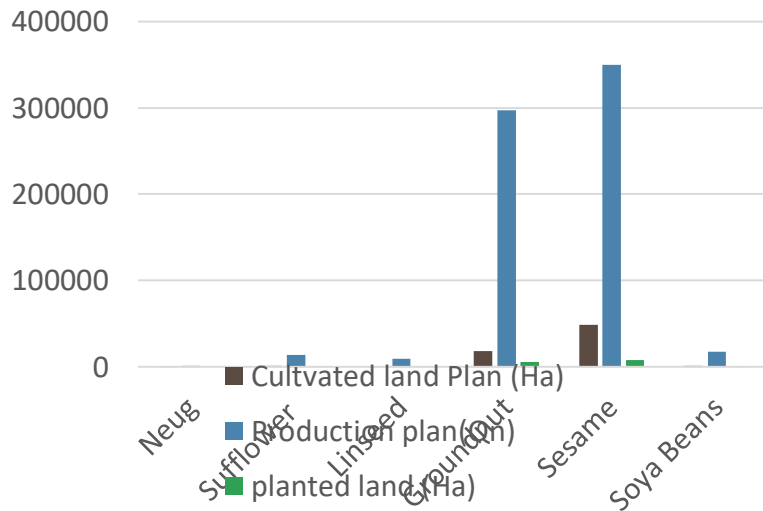
During the Belgian season, 1,810,106 hectares and 56,367,217 Qu were planned, with 280,741 hectares ultimately planted in cereal crops.



3 Oil crop

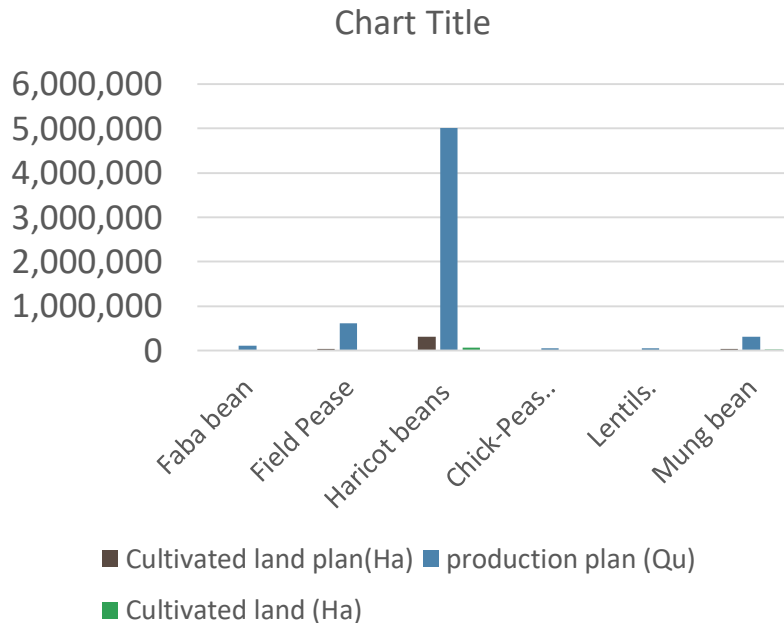
During the Belg season, 70,607 hectares and 689,603 qu were planned, with 14,338 hectares planted in oil crops.

Oil crop



2 Pulse Crop

During the Belg season, 403,481 hectares and 6,202,460 qu were planned, with 108,286 hectares planted in pulses crops.



- 1** **Cultivated land Plan (Ha)**

In the 2015/16 belg season, 3,123,797 hectares of land are planned to be cultivated in the regions of Amhara, Oromia, Tigray, Sidama, South Ethiopia, Central Ethiopia, Southwest and Somalia.
- 2** **Production plan (Qu)**

In the 2015/16 belg season, 81,852,093 quintals of produce are planned in the regions of Amhara, Oromia, Tigray, Sidama, South Ethiopia, Central Ethiopia, Southwest and Somalia.
- 3** **Performance**

The According to the data we received from the regions , Belg seasonal activity's is being done in all belg growing regions, 2,523,161 ha of land has been cultivated and 578,060 ha of land has been covered.

Belg cropping by regions (631k ha)

ተ. ቁ	Region	Plan		Cultivated በሂ/ረ			Planted (Ha)
		Area(ha)	Yield(Qt)	Traditional	Tractor	Total	
1	Amhara	239,509	4,260,370	230,533	1102	231,635	180,617
2	Oormia	1,228,349	28,201,717	746,835	512,781	1,259,616	113,224
3	Tigray	15,350	153,500	14,000	0	14,000	10,504
4	South Ethiopia	590,656	13,754,342	542,910	20,328	563,238	180,699
5	Centre Ethiopia	234,129	10,700,843	72,648	33,676	106,324	28,584
6	Sidama	64,735	3,555,023	65,068	0	65,068	7,536
7	South-west Ethiopia	321,831	11,987,177	277,376	5,904	283,280	110,223
8	Somali	429,238	9,239,621	0	0	0	0
	Total	3,123,797	81,852,593	1,949,370	573,791	2,523,161	631,387

አመሰግናለሁ
Thank You



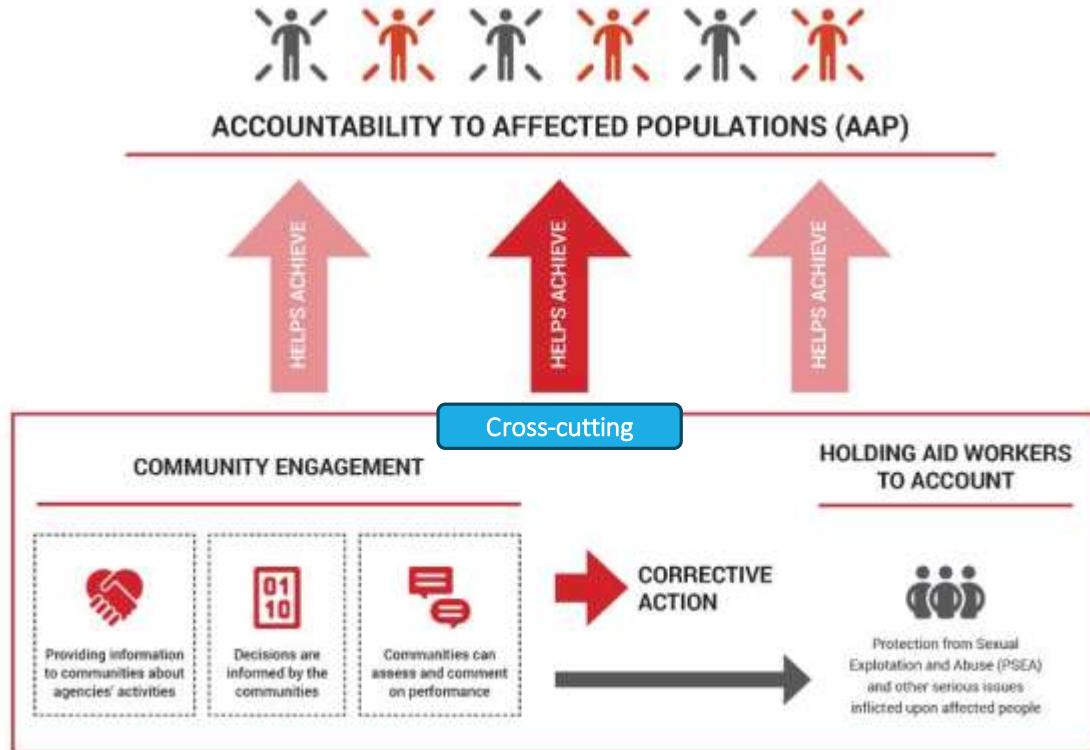
ግብርና ሚኒስቴር
MINISTRY OF AGRICULTURE

ከማምረት በላይ | Beyond Production

Inter-agency AAP Working Group, Ethiopia

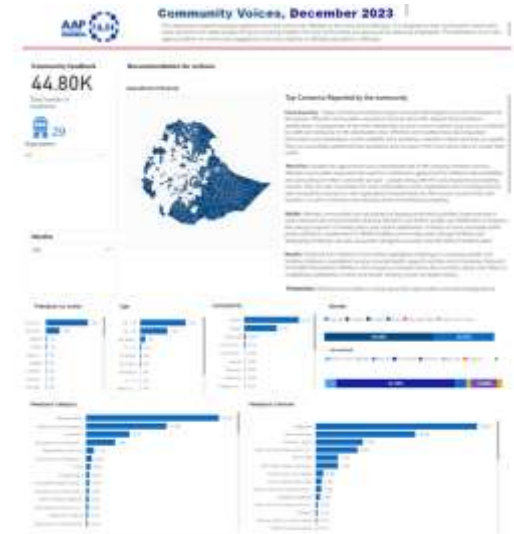
NICHOLAS NJOROGI, AAP ADVISER, OCHA

What is Accountability to Affected Populations (AAP) ?



AAP WG in Ethiopia

- About the Working Group: [The Inter-Agency Accountability Working Group in Ethiopia | ReliefWeb Response](#)
 - Current membership: slightly over 30 active members (50% local orgs.)
 - Currently Chaired by IOM and Co-chaired by Plan International
 - Monthly meetings (first Thursday of every month, 2pm - 3.30pm)
 - HCT Action plan developed and endorsed in Sept - November 2022
- Key actions/activities
 - Management of [Community Voices Dashboard](#) (Power BI)
 - Supporting **Sub-national AAP WGs** (Amhara, Afar, Somali)
 - Regular **collaboration with Clusters/other WGs** (needs-based)
 - Facilitating inter-agency **capacity strengthening trainings**
 - Development of key **community-led advocacy messages**
 - Development of **inter-agency materials (IEC)** in local languages
 - Integrating AAP in **multi-sectoral assessments e.g., MIRA, MSNA**
 - Integration **AAP indicators** in pooled funds for monitoring collective AAP e.g., EHF



Potential collaboration with Agriculture Cluster

1. Planning, implementation, monitoring and evaluation (AAP visibility in Cluster Activities)
 - Nominate Cluster **AAP focal points** to liaise with the AAP WG to support:
 - Integration of AAP questions/indicators/best practices in **standard assessments/PDMs + processes**
 - Integration of AAP indicators in Cluster monitoring framework (amplify visibility of AAP commitments)
 - Test contextual community participation approaches in the implementation and evaluation of agricultural activities
 - Integrating AAP into project proposals (checklist/guidance)
2. Feedback trends to support decision-making
 - Contribute to the Community Voices Dashboard (comparative analysis/triangulation/problem identification)
 - Strengthening **agency CFM/CBFM** to be more accessible, safe and responsive to diverse communities (in collaboration with PSEA Network)
3. Capacity strengthening
 - Support rapid Cluster accountability review/partner self-assessment (strengths + gaps)
 - Integration of AAP/AAP tools in Agriculture Cluster Trainings
 - Participate in peer learning activities (AAP Peer Learning Group)
 - Identify linkages at sub-national level (A-ICCGs etc.)

DRM-ATF March 2024

Regional Updates

Contextual Update

1. Drought

- **Afar region** and parts of **Somali Region** (Fafan and Siti zones) experiencing severe drought.
- Livestock in Afar region and Fafan and Siti zones facing deteriorated body condition and reported deaths.
- Abnormal migration of pastoralists observed from Chifra, Ewa, Dewe, and Hanruke Woredas to Mile woreda.
- **260,000 people** in Fafan zone urgently requiring emergency food assistance.
- Challenge of CCPP, SGP, Camel Pox, and PPR reported in different **zones of Somali Region**.
- **Tigray Region** in need of 18 million doses of veterinary vaccines, 16 million doses of veterinary drugs, and rehabilitation of 153 veterinary clinics.
- Drought-hit areas experiencing increased food costs and decreased livestock prices.
 - ❖ Community need to sell 2-3 medium-sized male goats to purchase a 50kg bag of wheat flour costing 5600 ETB.

2. Belg Farming Activities

- Belg Farm Activities have been ongoing in **Oromia, Amhara, Tigray and South Regions** following the belg rain.
- The distribution of **agricultural inputs** by BOA has been started in belg production areas of Oromia, Amhara and Tigray Regions.
 - ❖ In Oromia **1,331,319 qtl (26%) fertilizer** were distributed.
 - ❖ In Amhara **205,006qt of fertilizer** were distributed.
- In Amhara Region, **180,516 ha** of land, and in Oromia Region, **1,001,997 ha** of land have been successfully cultivated.

3. Weather Condition

- In the second dekad of March 2024, the whole Afar, the whole of Somali, some areas of eastern Amhara, central, eastern, and southern areas of Oromia and southern parts of South Ethiopia and Southwestern Ethiopia Regions were dried.
- Some Part of Oromia Region such **Eluababor, Jimma, East Wollega and Kellem Wollega, Horo Guduru and Buno Bedele** received minimal and normal rainfall in the second and third weeks of March 2024.
- Following the third week of March 2024, some woredas of **Afar and Tigray** have experienced sporadic rainfall, it is important to note that the magnitude and intensity of these rain remain very low.
- Insufficient food assistance has left flood-affected/displaced people, particularly in **Dasenech Woreda of South Omo**, without adequate support.
- Flood alert notifications have been disseminated to communities in flood prone areas.

Key response updates in the regions

- **Afar Region:** FSA supported voucher-based animal health treatment, AISDA conducted cash-for-work activities, and IRE provided multipurpose cash assistance to 1,003 households.
- **Amhara Region:** Care and ORD provided various agriculture and livestock inputs to farmers in Wagmrah, North, and South Gondar zones. ZOA conducted restocking activities in South and North Wello.
- **Oromia Region:** VSF G: Livestock treatment, irrigation-based crop production (Borena zone), WV: Restocking (Dubuluk woreda), CIFA: Multipurpose cash support (Moyale), SOS: Improved crop seed support (West Shewa zone), FAO: Improved seed support (Bale and East Bale zones).
- **Southern and Sidama Region:** FAO provide support improved crop **seeds to different woredas.**
- **Tigray region:** a couple of humanitarian organization have been supported different agricultural inputs and tools in belg farming woredas of the region.

.....Key response updates in the region

Description of activities	location	Total hh reached	implementing partner
Voucher based animal Health service provision	Ewa Woreda	6700	FSA
land rehabilitation activities through cash-for-work initiatives	Ewa, Yallo, and Gulina woredas	145	AISDA
Multipurpose Cash Support	Yangudi Zone	1,003	IRE
Pprovided small ruminant restocking	Yalo and Gullina woredas	30 HHs	OSD
Improved crop seed and vegetable seed support	Wagehimra	600	Care Ethiopia
support restocking of 247 shoat to 42 HH and 162 tin improved vegetable seed to 216HH	South and North Wello	shoat to 42 HH and improved vegetable seed to 216HH ZOA	
Agricultural inputs support	North Gondar and south Gondar	2145	ORDA

..... Key response updates in the region

Description of activities	location	Total hh reached	implementing partner
Distribution of seeds and hand tool	Borena	75 (25 F)	VSF G
Distribution of watering pump for small-scale irrigation	Borena	3 waterpump	VSF G
Capacity Building training on Agricultural Extension for Agro Pastoralist	Borena	75(24 f)	VSF G
Distribution of veterinaries drugs through voucher based livestock treatment for 975 (240 female headed)	Borena	975 (240)	VSF G
Facilitated participatory scenario planning workshop and Weather Advisory Dissemination	E Harareghe (Babile and Gursum) W Hararghe (Gumbi and Meisso)		Care Ethiopia
MPCA	Borena (moyale)		376 CIFA
Restocking	Borena (Dubuluk)		100 WVE
40 Quintal Haircoat bean seed purchased and ready to distribution	West Shewa		SOS Sahel Ethiopia
2994 qtl Wheat seed supplied	Bale and East Bale zone		FAO

Key Challenges and way forward

- The drought situation has been worsening in Afar, Amhara, Tigray and some zones of Somali Region and require urgent support in response to the drought.
- Delay of agriculture inputs (seed and fertilizers) support for some belt Productive areas (**Amhara, Oromia, Tigray, South and Somali Regions**).
- Disease outbreak (**Cholera and Livestock disease**) and limited controlling capacity reported **Somali Region**.
- Limited Access of some areas of **Amhara Region** to provided humanitarian support.

Thank You!!





Information Management Updates

By DRM ATF- IM



Introduction

- Accurate information and data is vital for coordinating the response.
- Operational decision making and prioritization require accurate and timely information

The Information Management Chain



Activity Infor 5Ws Reporting

5Ws and Activity Infor (AI)

Meaning

5W is an acronym that stands for Who's doing What, Where, When and for Whom

Some agencies, sectors use 3W, others use 4W. Others include Why to make it 6W

5W is a component of information management for **effective, coordinated response, activity and gap analysis**

Rationale

5W data is essential for **advocacy** and **resource mobilization** for Humanitarian response

5W data can help to eliminate **duplications**, to **inform decisions**, and **help actors** (donors, government, responders) to **ask better questions**.




Unified reporting platform that's brings together multiple partners (Multisectoral). Centralize information and coordinate partners' reporting by OCHA

Reporting Timelines


JANUARY

MON	TUE	WED	THU	FRI	SAT	SUN
				1	2	3
4	5	6	7	8	9	10
11	12	13	14	15	16	17
18	19	20	21	22	23	24
25	26	27	28	29	30	31





Right timing for sending out the Activity 5Ws request is key, last week of the month is appropriate as most organizations will be ending their monthly interventions at this time.



At this point if a partner has not submitted their 5Ws then a phone call to follow up might be required.

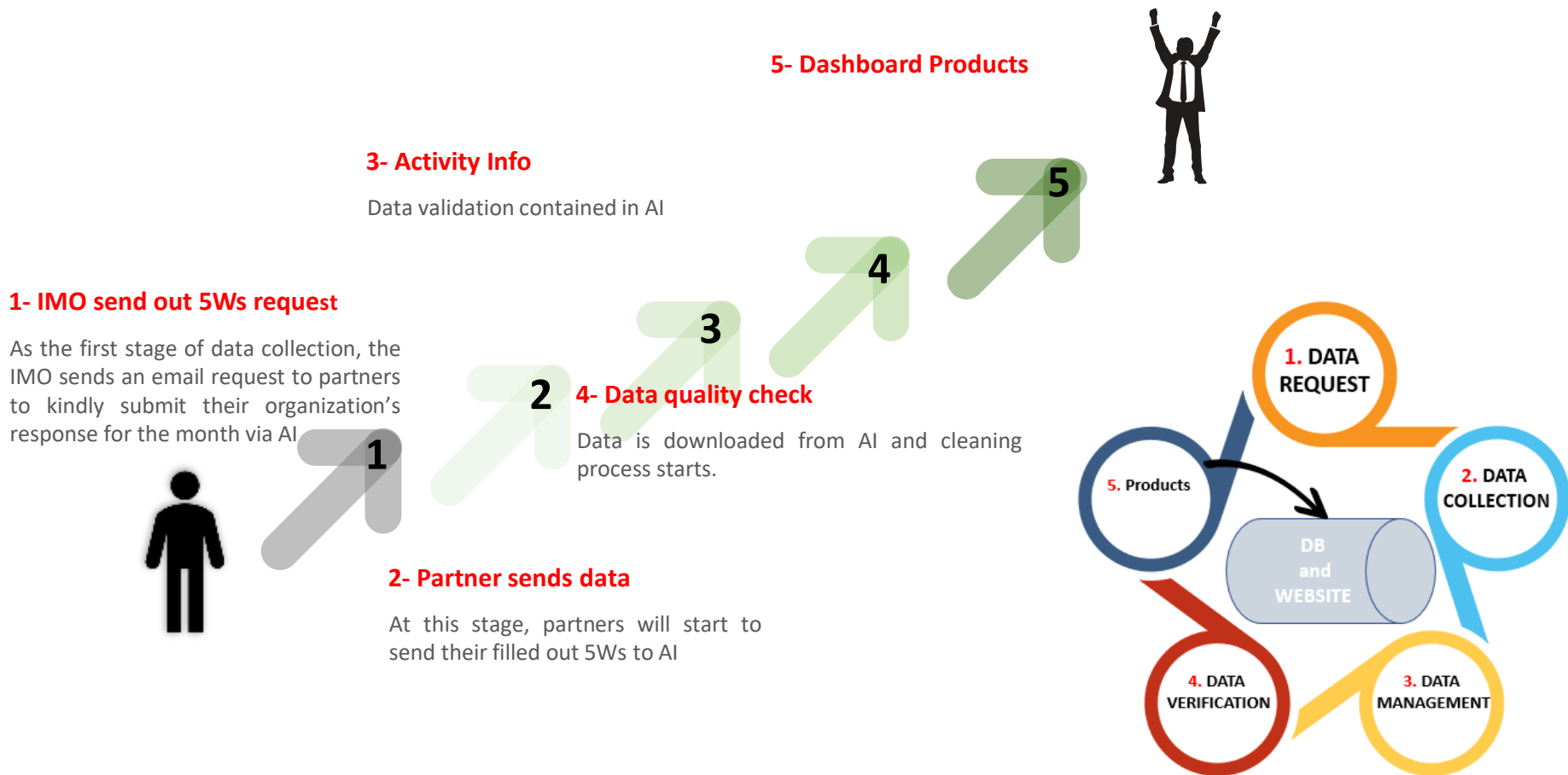
FEBRUARY

MON	TUE	WED	THU	FRI	SAT	SUN
				1	2	3
4	5	6	7	8	9	10
11	12	13	14	15	16	17
18	19	20	21	22	23	24
25	26	27	28	29	30	31

5Ws Submission DEADLINE

IM PRODUCTS READY!

5Ws: Data Collection Process



Ethiopia Agriculture Taskforce (ATF)

- Overview
- Documents**
- Contact Us**

<https://fscluster.org/ethiopiaagric>

13.0M
People in Need

9.1M
People Targeted

72,000
People Reached

\$322.5M
Funding Requested (USD)

Search documents

Document title

Document type

Sources

Content themes

Months covered

Key documents

Publication date



13.0 M

People in Need



9.1 M

People Targeted



USD 322.5 M

Requirements



65

Partners



72 K

Reached by Feb 2024

Working in collaboration with iMMAP

1. Basic Excel (Addis and also to Regions)

- Basic GIS (Q-GIS)
- Kobotoolbox





ETHIOPIA AGRICULTURE TASK FORCE



Thank You



Food and Agriculture Organization
of the United Nations

FAO Ethiopia

Monthly Agriculture Situation Monitoring In Agriculture Intervention Areas

28 March 2024



KEY PARAMETERS FOR INVESTIGATION

- Rainfall situation
- Livestock condition
- Crop situation (cereal, pulses, and vegetables)
- Access to inputs
 - Improved seed
 - Fertilizer.
- Income generated from labor.
- Shocks (hazards) encountered.
- Market prices of some cereal and livestock types



THE TOOL

- Remote data collection - using KOBO Toolbox
- Based on telephone calls
- Information at Woreda level
- Few respondents - generally homogeneous
- Relies on availability of beneficiary information telephone numbers and willingness to respond.



Any partners willing to join the effort for your woredas?

Betam Amasegnalehu

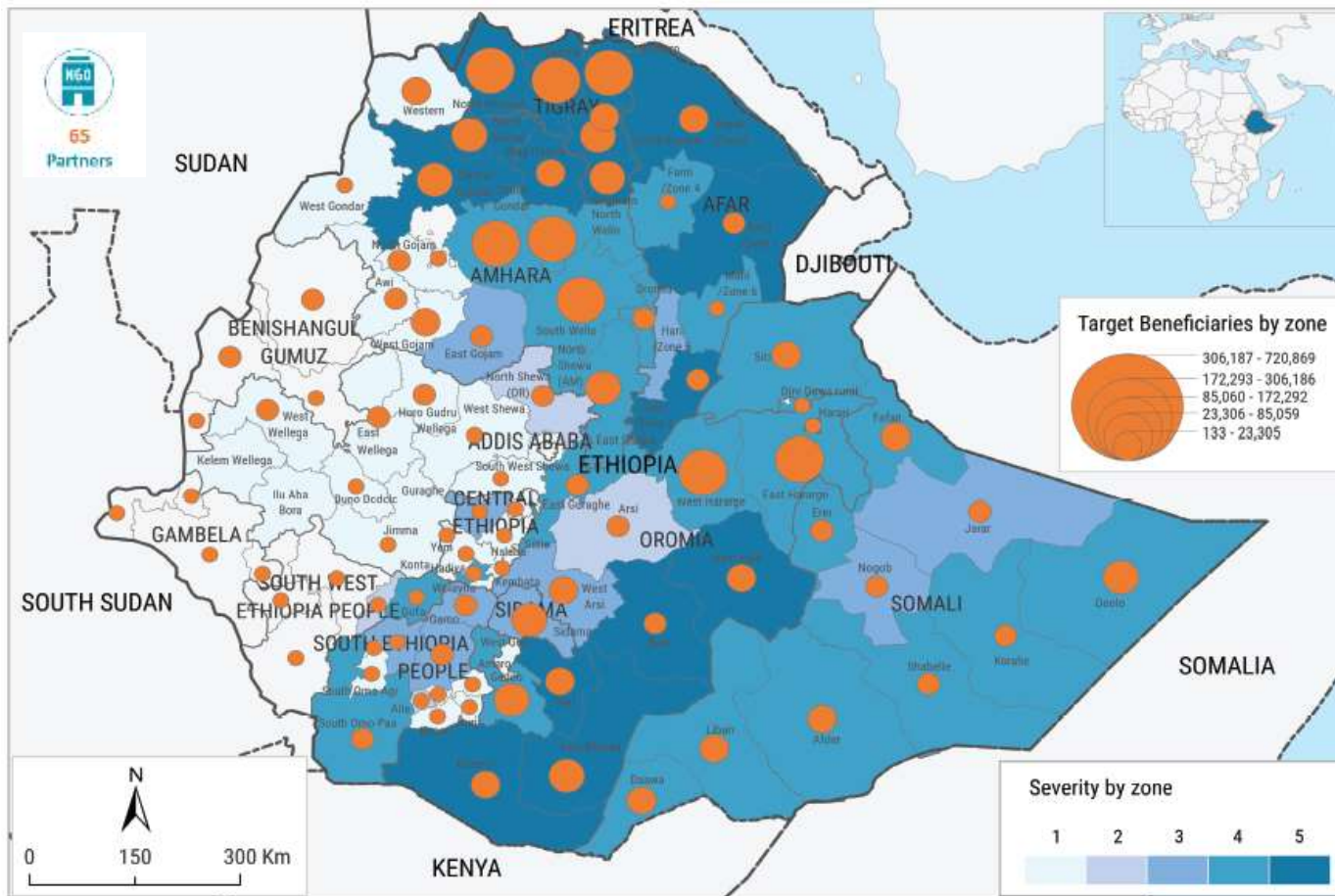
Agriculture cluster Update



Content

1. HRP 2024
2. Belg Performance
3. Cluster Priorities (1st and 2nd Quarter)

Humanitarian Response Plan 2024



13.0 M
People in Need



9.1 M
People Targeted



USD 322.5 M
Requirements

STRATEGIC OBJECTIVE & ACTIVITIES

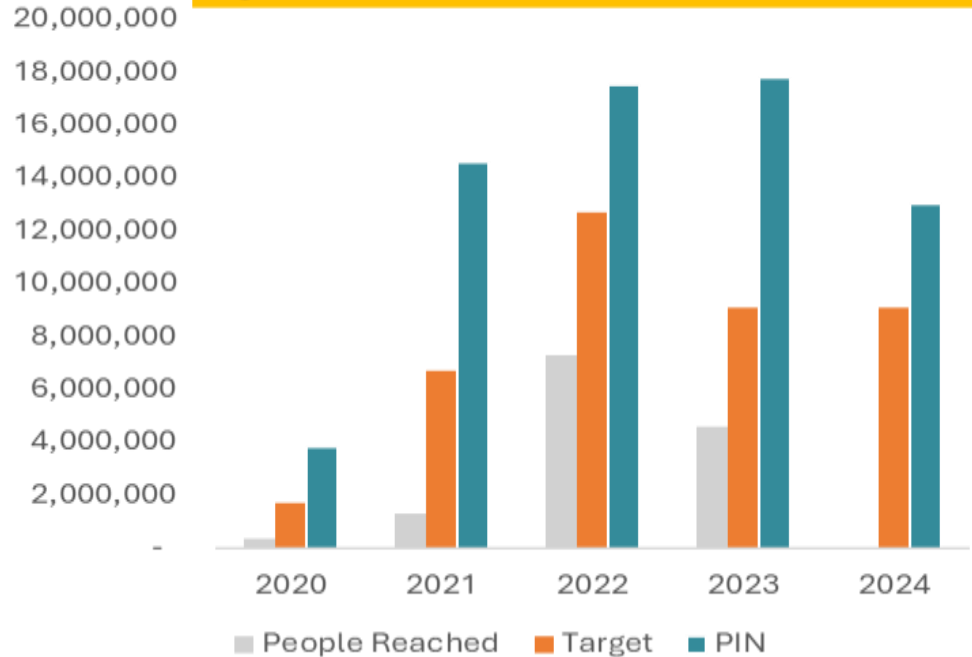


SO1 To protect and sustain core-agricultural livelihoods of households affected by conflict, climate shocks, and displacement in Ethiopia through emergency livelihoods humanitarian interventions in 2024.

Activities:

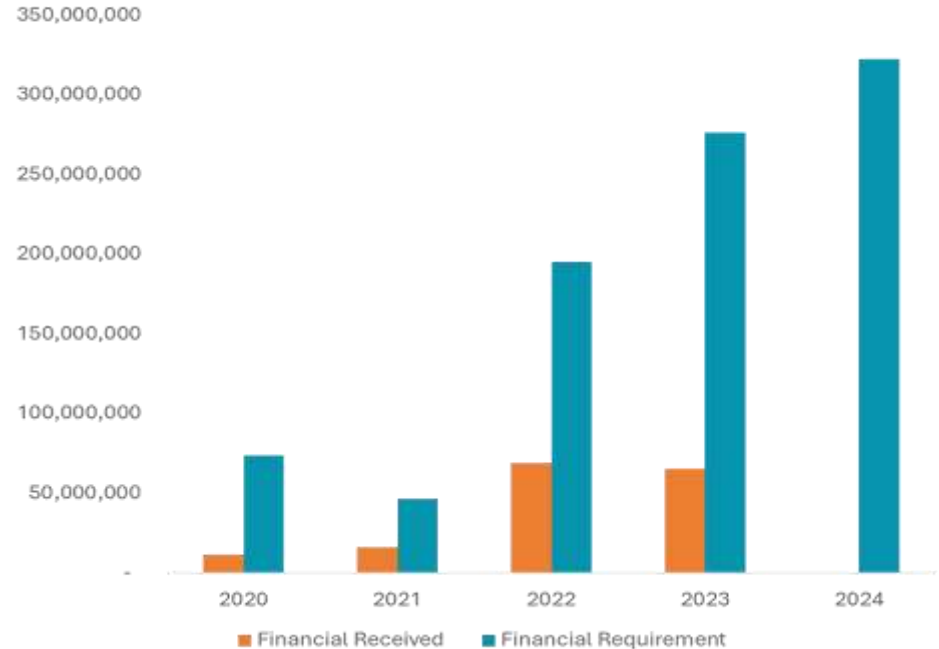
- Provision of multi-purpose cash transfer to the most vulnerable farming and pastoral households.
- Provision of Income Generating Activities to the most vulnerable farming and pastoral households.
- Support restocking/destocking of animals to mitigate large-scale loss of livestock.
- Support treatment and vaccination of animals to mitigate large-scale loss of livestock.
- Provision of supplementary livestock feed to vulnerable pastoral households and agro-pastoral households.
- Provision of improved locally adapted drought tolerant crops (cereals, pulses and vegetables) and fodder seeds together with essential farm tools and equipment.
- Draught power support for effective land preparation activities.

Agriculture Cluster HRP 2020-2024



- The needs continue to increase against limited funding and the cluster can only reach less than 50% of the people in need. **Agriculture is underfunded.** However, with much investment in agriculture the food insecure caseload can be greatly reduced.

Agriculture Cluster Financial 2020-2024



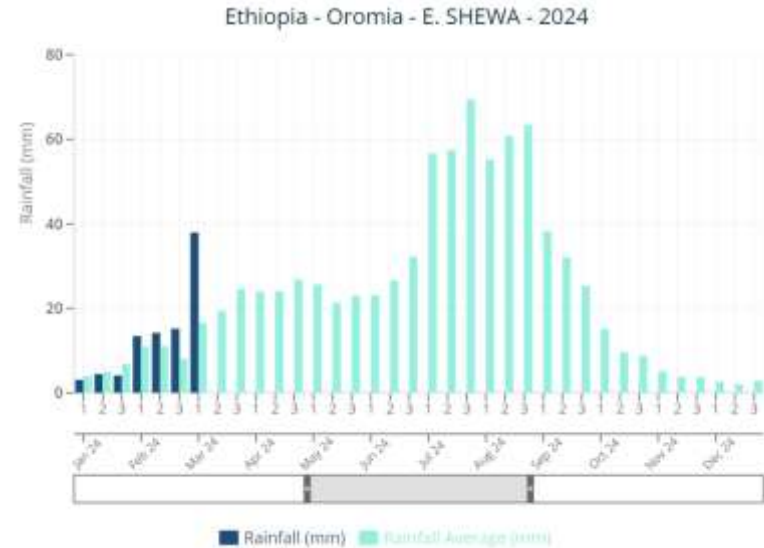
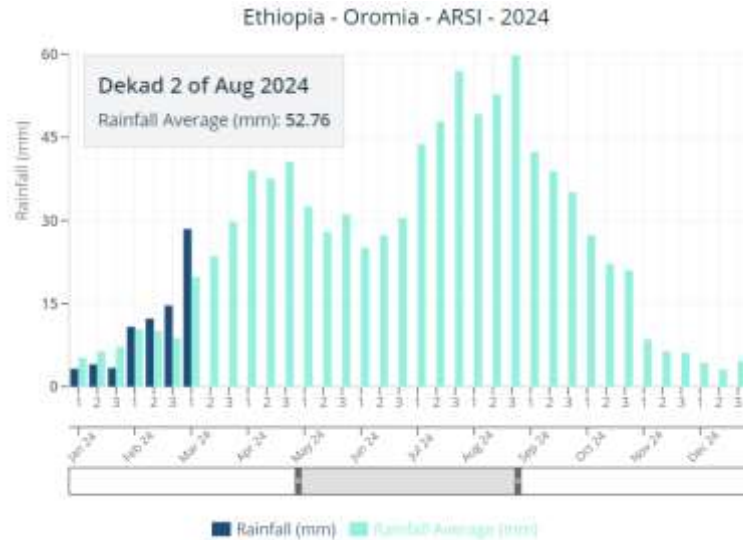
-
- The Agriculture cluster received less than **50%** of the required funding in the last 5 years

Belg Season Update

About 10% planted
as of 8 March
2024.

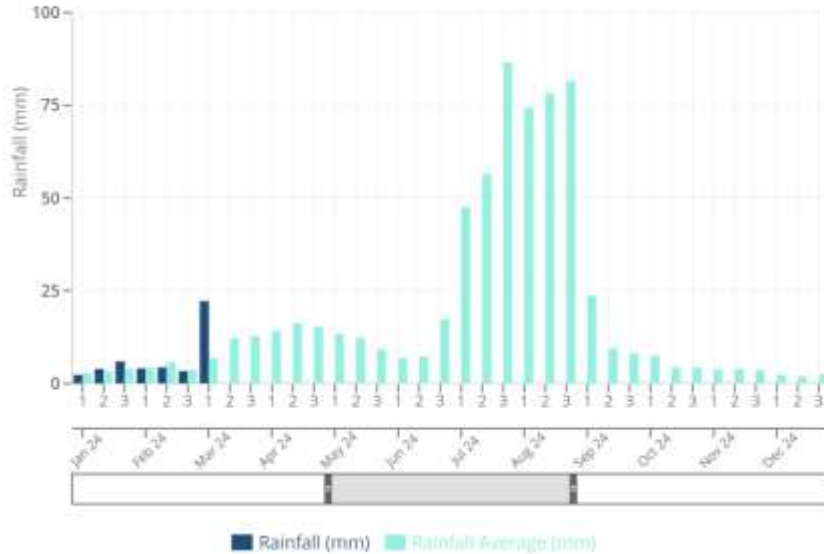
	Region	Plan		Cultivated Land in hector			Planted Land (Hector
		Planting area in Hector	Production plan (qtl)	Conventional	Mechanized	Total	
1	Amhara	239,509	4,260,370	203,285	-	203,285	100,350
2	Oromia	1,228,349	28,201,717	610,399	391,598	1,001,997	20,000
3	Tigray	15,350	153,500	14,000	-	14,000	3,217
4	South Ethiopia	590,656	13,754,342	404,977	20,328	425,305	83,776
5	Central Ethiopia	234,129	10,700,843	43,829	33,676	77,505	4,875
6	Sidama	64,735	3,555,023	54,812	0	54,812	2,949
7	Southeast Ethiopia	321,831	11,987,177	232,288	4,532	236,820	89,438
8	Somali	429,238	9,239,621	-	-	-	-
	Total	3,123,797	81,852,593	1,563,590	450,134	2,013,724	304,605

Rainfall performance



Rainfall performance

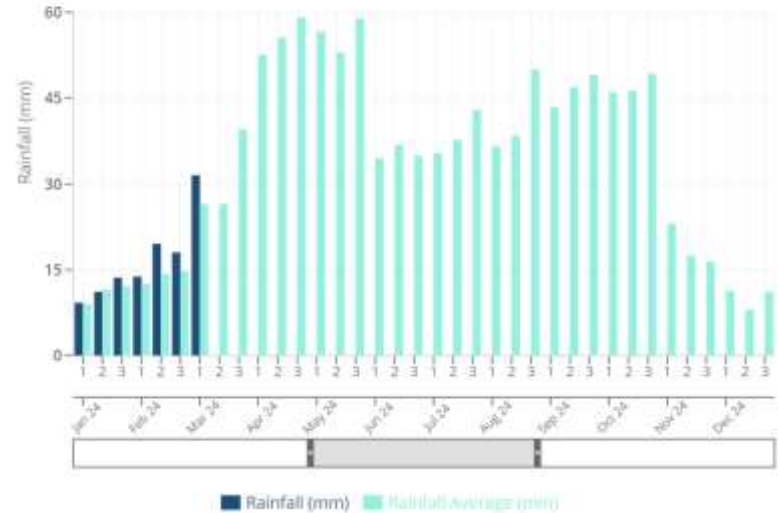
Ethiopia - Tigray - S. TIGRAY - 2024



Rainfall



Ethiopia - SNNPR - SIDAMA - 2024



- The Agriculture cluster drought response in 2024



DROUGHT RESPONSE

To guarantee timely planting and crop production in the most affected areas during the ongoing Belg season (Feb-May), and ahead of the Meher season (May-Sept), as well as strengthen availability and access to food by affected populations in drought-affected areas, ATF partners are aiming to:

- Support crop production.
- Support animal health.
- Support re-stocking activities recommended in poor pastoralist communities.
- Provide cash to mitigate the risk of selling productive assets during the lean season.

- The Agriculture cluster flood response in 2024



FLOOD RESPONSE

To reduce the risk of animal diseases and losses, shortage, or lack of crops inputs shortages (seed, tools, fertilizers), as well as to enable farmers to restore their agricultural productivity and produce food during anticipated floods, the ATF partners are aiming to:

- Support the dissemination of early warning messaging to the community at risk.
- To immediately provide unconditional cash to the most vulnerable and displaced households,
- To immediately proceed to animal health interventions to limit the spread of flood-induced diseases.
- To immediately provide inputs to enable planting.

Cluster updates

1. CCPM validation workshop.- **4 April 2024**
2. Technical Working Groups- **Livestock TWG(11 April 2024), Crop TWG (18 April 2024)**
3. Anticipatory Action cluster meeting **10 April 2024,**
4. EHF partners meeting (**4 April 2024**),
5. Partner presentation& Impact stories,
6. FTS updates,
7. NGO Co-Coordinator

Thank you

AoB



Thank you!

ETHIOPIA

AGRICULTURE

TASK FORCE