

# Inter-agency AAP Working Group, Ethiopia

---

NICHOLAS NJOROGI, AAP ADVISER, OCHA

# What is Accountability to Affected Populations (AAP) ?



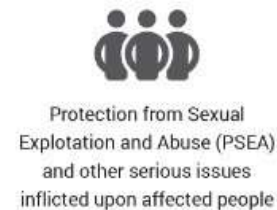
ACCOUNTABILITY TO AFFECTED POPULATIONS (AAP)



Cross-cutting

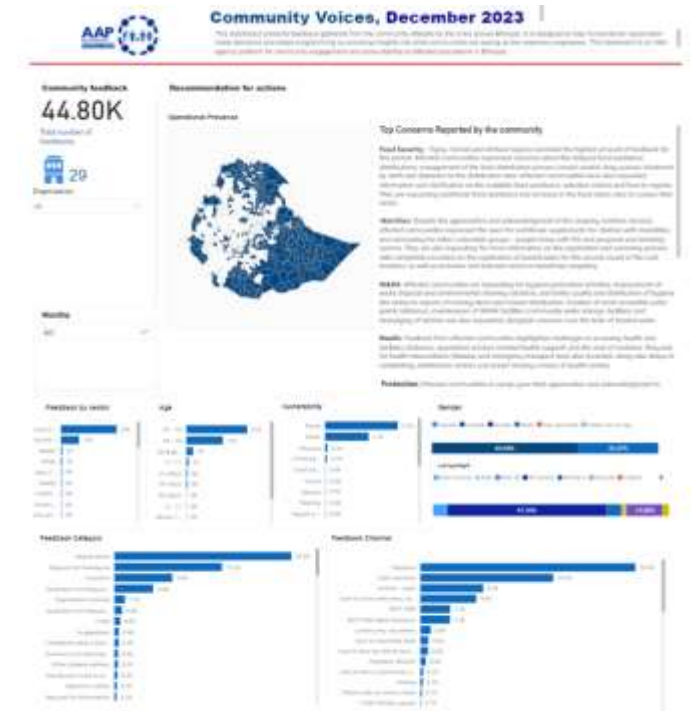
COMMUNITY ENGAGEMENT

HOLDING AID WORKERS TO ACCOUNT



# AAP WG in Ethiopia

- About the Working Group: [The Inter-Agency Accountability Working Group in Ethiopia | ReliefWeb Response](#)
  - Current membership: slightly over 30 active members (50% local orgs.)
  - Currently Chaired by IOM and Co-chaired by Plan International
  - Monthly meetings (first Thursday of every month, 2pm - 3.30pm)
  - HCT Action plan developed and endorsed in Sept - November 2022
- Key actions/activities
  - Management of [Community Voices Dashboard](#) (Power BI)
  - Supporting Sub-national AAP WGs (Amhara, Afar, Somali)
  - Regular collaboration with Clusters/other WGs (needs-based)
  - Facilitating inter-agency capacity strengthening trainings
  - Development of key community-led advocacy messages
  - Development of inter-agency materials (IEC) in local languages
  - Integrating AAP in multi-sectoral assessments e.g., MIRA, MSNA
  - Integration AAP indicators in pooled funds for monitoring collective AAP e.g., EHF



# Potential collaboration with Agriculture Cluster

---

1. Planning, implementation, monitoring and evaluation (AAP visibility in Cluster Activities)
  - Nominate Cluster **AAP focal points** to liaise with the AAP WG to support:
    - Integration of AAP questions/indicators/best practices in **standard assessments/PDMs + processes**
    - Integration of AAP indicators in Cluster monitoring framework (amplify visibility of AAP commitments)
    - Test contextual community participation approaches in the implementation and evaluation of agricultural activities
    - Integrating AAP into project proposals (checklist/guidance)
2. Feedback trends to support decision-making
  - Contribute to the Community Voices Dashboard (comparative analysis/triangulation/problem identification)
  - Strengthening **agency CFM/CBFM** to be more accessible, safe and responsive to diverse communities (in collaboration with PSEA Network)
3. Capacity strengthening
  - Support rapid Cluster accountability review/partner self-assessment (strengths + gaps)
  - Integration of AAP/AAP tools in Agriculture Cluster Trainings
  - Participate in peer learning activities (AAP Peer Learning Group)
  - Identify linkages at sub-national level (A-ICCGs etc.)