

In December 2023, the food security sector assisted around 1.2 million people with food assistance and around 433 thousand people with agriculture and livelihoods, of which 82 percent (1,004,338) and 42 percent (179,948) respectively received support, through cash voucher assistance (CVA). A total of 29 organizations, national, and international non-governmental organizations, and UN agencies used various delivery mechanisms such as cash payments, mobile money transfers, paper vouchers, and electronic vouchers. Borno state 78 percent of the CVA beneficiaries, with Yobe state hosting 22 percent and Adamawa state has 1 percent.

KEY FACTS & FIGURES ON CASH & VOUCHER ASSISTANCE

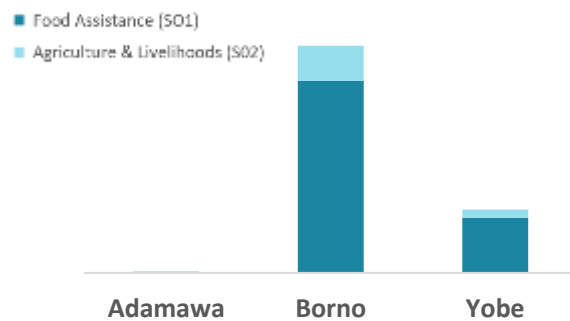


1,004,338
Food Assistance



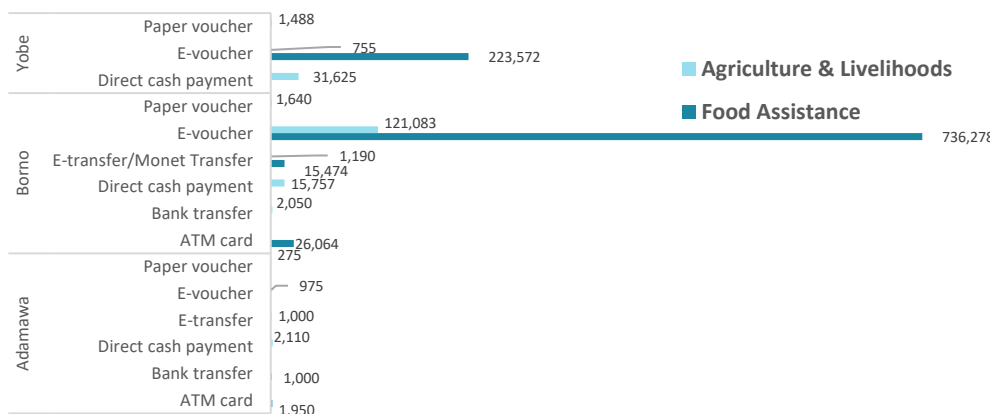
179,948
Agriculture & Livelihood

Cash & Voucher Assistance at State Level

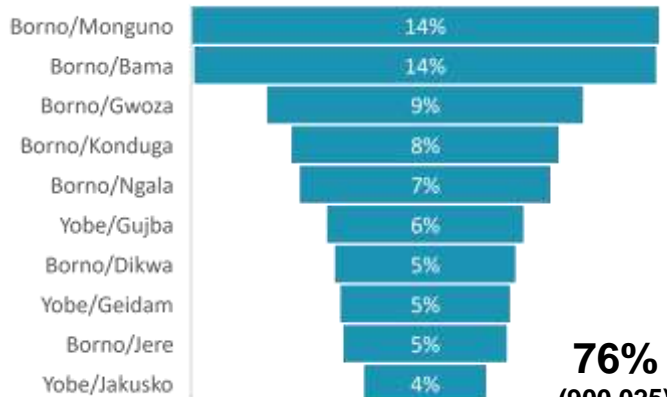


SO1	Adamawa	Borno	Yobe
SO1	2,950	777,816	223,572
SO2	4,360	141,720	33,868

Cash & Voucher Assistance Modalities Used at State Level



Top 10 of the 34 LGAs with Cash Voucher Assistance



76%
(900,025)

MODALITY | PEOPLE ASSISTED

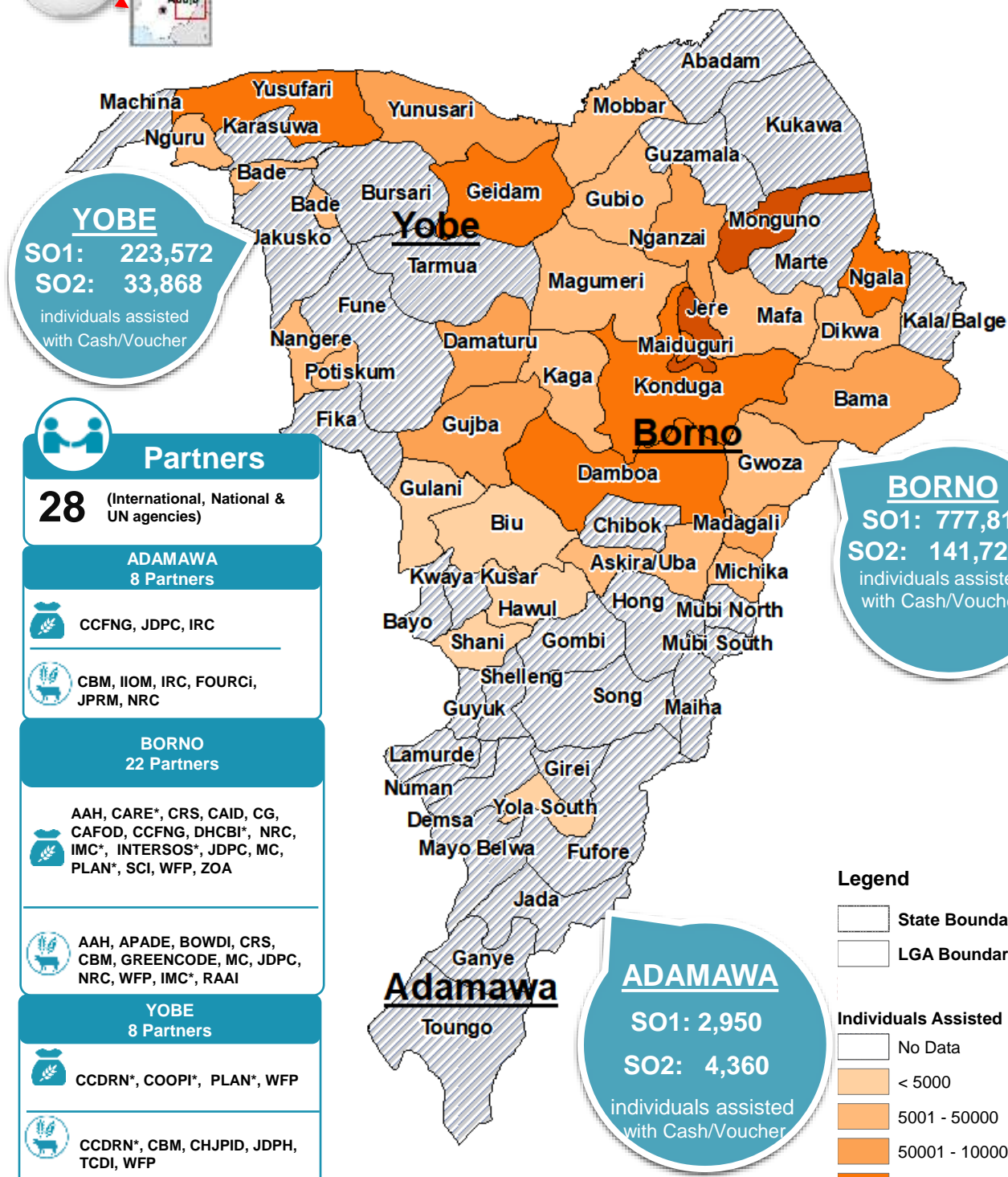
DELIVERY MODE/People Assisted

Modality	People Assisted	Percentage
ATM card	28,014	2%
Bank transfer	3,050	1%
Direct cash payment	49,492	4%
E-voucher	1,082,663	89%
E-transfer/Agent	17,664	1%
Paper voucher	3,403	1%

CONDITIONALITY/People Assisted

Conditionality	People Assisted	Percentage
Conditional	55,966	(5%)
Unconditional	1,128,320	(95%)

CVA INTERVENTION PARTNER PRESENCE MAP



Partners

28 (International, National & UN agencies)

ADAMAWA

8 Partners

CCFNG, JDPC, IRC

CBM, IOM, IRC, FOURCI, JPRM, NRC

BORNO

22 Partners

AAH, CARE*, CRS, CAID, CG, CAFOD, CCFNG, DHCBI*, NRC, IMC*, INTERSOS*, JDPC, MC, PLAN*, SCI, WFP, ZOA

AAH, APADE, BOWDI, CRS, CBM, GREENCODE, MC, JDPC, NRC, WFP, IMC*, RAAI

YOBE

8 Partners

CCDRN*, COOPI*, PLAN*, WFP

CCDRN*, CBM, CHJPID, JDPH, TCDI, WFP

Organization*: Partners who also implement activities WFP and/or FAO

Food Assistance

Agriculture & Livelihoods