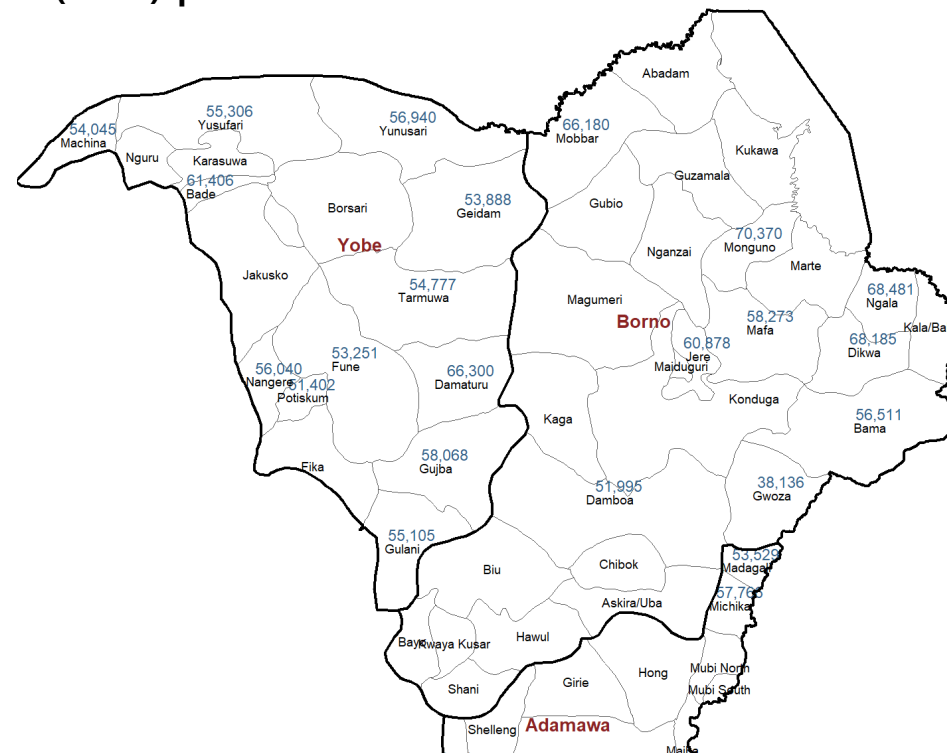




## SMEB (100%) per Market Location in BAY States December 2023



### Highlights

- The food inflation index increased to 33.93 percent in November 2023 on a year-on-year basis from 32.84 percent in October 2023 with a difference of 1.09 percent due to an increase in the prices of some food items<sup>1</sup>. Compared to the parallel market rate of ₦1159/\$1 for the previous month, the Naira depreciated by 5.2% on the parallel market to close at ₦1220/\$1 on the 31st of December. This brings the total year-on-year (December 2022 to December 2023) depreciation of the Naira to 63%.
- Between November and December, the value of **70% of the cost of Survival Minimum Expenditure Basket (SMEB)** for a family of five increased by 3% from 41,292 naira to 42,615 naira in Maiduguri and Jere in Borno State. The December value of 70% of the cost of SMEB for a family of five in Damaturu represents an increase of 4% when compared to the previous month. Please refer to *Table 3* for the SMEB values in other LGAs of the BAY states.
- In December, petroleum pump prices were observed to still be on the rise across various outlets in the country. In comparison to the previous month, Yunusari LGA in Yobe State witnessed an 88% increase from an average price of 692 naira to 1300 naira per litre. Fuel prices were highest in Monguno LGA of Borno State with an average of 1,700 naira per litre, while the lowest price was observed in Mafa LGA in Borno State, with an average of 635 naira/litre in December 2023. Please refer to *Table 5* for fuel prices in other LGAs of the BAY states.
- **The SMEB is seen to be experiencing an increase in the majority of the LGAs in Borno compared to the previous month.** This can be attributed to an increase in the prices of some commodities due to the festivities.

## Survival Minimum Expenditure Basket (SMEB)

TABLE 1: SMEB calculated for 5 households members in MMC & Jere markets for one month without the ₦2000 for Firewood

| Food Item                                     | gms/day/pp | Kc/day/pp   | gms/HH/day | gms/HH/month | Kg/HH/month | Price/Kg- Naira(MPM) | Price/HH/month- Naira |
|---|------------|-------------|------------|--------------|-------------|----------------------|-----------------------|
| Rice  | 150        | 540         | 750        | 22500        | 22.5        | 1006                 | 22,643.00             |
| Maize   | 250        | 913         | 1250       | 37500        | 37.5        | 462                  | 17,341.00             |
| Beans   | 75         | 255         | 375        | 11250        | 11.25       | 785                  | 8,830.00              |
| Palm Oil                                      | 10         | 88          | 50         | 1500         | 1.5         | 1455                 | 2,183.00              |
| Groundnuts                                    | 15         | 85          | 75         | 2250         | 2.25        | 822                  | 1,849.00              |
| Sugar   | 10         | 39          | 50         | 1500         | 1.5         | 1636                 | 2,455.00              |
| G/nut Oil/ Veg Oil                            | 20         | 177         | 100        | 3000         | 3           | 1574                 | 4,723.00              |
| Salt  | 5          | 0           | 25         | 750          | 0.75        | 285                  | 214.00                |
| Onion   | 8          | 3           | 40         | 1200         | 1.2         | 535                  | 641.00                |
| <b>Total</b>                                  |            | <b>2100</b> |            |              |             |                      | <b>60,879.00</b>      |
| <b>Cost of food basket at 70%</b>             |            | <b>1470</b> |            |              |             |                      | <b>42,615.30</b>      |
| <b>Per Capita based on 70% transfer value</b> |            |             |            |              |             |                      | <b>8,523.06</b>       |

TABLE 2: SMEB calculated for 5 households members in Damaturu markets for one month without the ₦2000 for Firewood

| Food Item                                     | gms/day/pp | Kc/day/pp   | gms/HH/day | gms/HH/month | Kg/HH/month | Price/Kg- Naira(MPM) | Price/HH/month- Naira |
|---|------------|-------------|------------|--------------|-------------|----------------------|-----------------------|
| Rice  | 150        | 540         | 750        | 22500        | 22.5        | 1080                 | 24,300                |
| Maize   | 250        | 913         | 1250       | 37500        | 37.5        | 540                  | 20,250                |
| Beans   | 75         | 255         | 375        | 11250        | 11.25       | 680                  | 7,650                 |
| Palm Oil                                      | 10         | 88          | 50         | 1500         | 1.5         | 1500                 | 2,250                 |
| Groundnuts                                    | 15         | 85          | 75         | 2250         | 2.25        | 800                  | 1,800                 |
| Sugar   | 10         | 39          | 50         | 1500         | 1.5         | 1600                 | 2,400                 |
| G/nut Oil/ Veg Oil                            | 20         | 177         | 100        | 3000         | 3           | 2500                 | 7,500                 |
| Salt  | 5          | 0           | 25         | 750          | 0.75        | 300                  | 225                   |
| Onion   | 8          | 3           | 40         | 1200         | 1.2         | 688                  | 825                   |
| <b>Total</b>                                  |            | <b>2100</b> |            |              |             |                      | <b>67,200</b>         |
| <b>Cost of food basket at 70%</b>             |            | <b>1470</b> |            |              |             |                      | <b>47,040</b>         |
| <b>Per Capita based on 70% transfer value</b> |            |             |            |              |             |                      | <b>9,408</b>          |

Trend in the Cost of 70% SMEB - MMC/Jere and Damaturu

December 2022 to December 2023

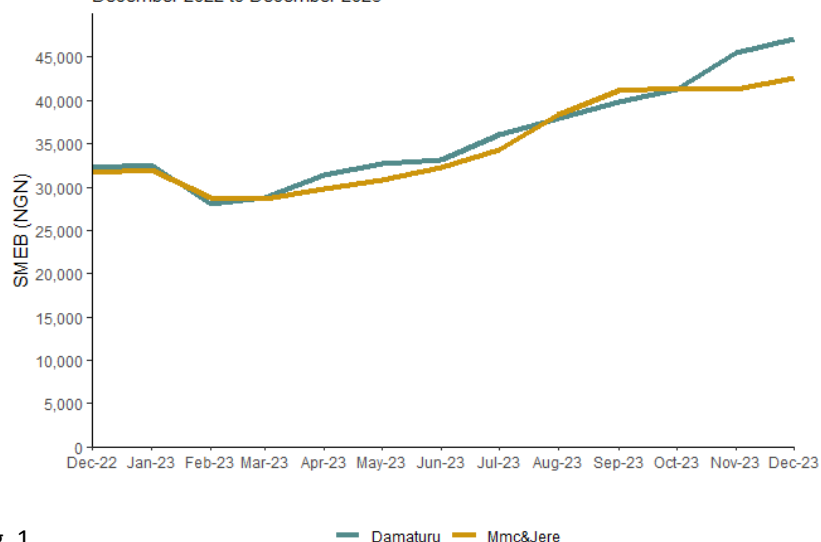


Fig. 1

source: WFP, RAM 2023

Monitoring the prices of food commodities, is essential to understand market functionalities, as well as inform cash based interventions by providing accurate local information on changes in prices. On this premise, WFP undertakes a bi-weekly monitoring of food commodities to gauge how vulnerable and market-dependent households are affected by food price changes and the resulting impact of such changes on the cost of the food basket.

WFP partners monitored a total of 31 markets across 24 LGAs in the December 2023 bulletin. Of these, 2 markets were in Adamawa, 17 markets in Borno (of which eight markets were in MMC and Jere) and the remaining 12 markets were in Yobe State.

Table 3 presents the SMEB values for various LGAs during the month of November 2023, revealing **Monguno LGA with the highest SMEB value (₦70,370)**, followed closely by Ngala (₦68,481), on the other hand Gwoza LGA had the lowest SMEB value (₦38,136) in Borno State.

LGAs of Borno State monitored in December are seen to experience a month-on-month increase in the cost of SMEB **as high as 16 percent in Dikwa LGA** from ₦58,634 in November to ₦68,165 in December, followed closely by Monguno and Ngala LGAs with an increase of 9 percent respectively.

Therefore, prices are generally expected to slightly increase in most LGAs of Borno and Yobe States in the coming month.

TABLE 3: SURVIVAL MINIMUM EXPENDITURE BASKET (SMEB) ACROSS WFP OPERATIONAL AREAS IN BAY STATES DECEMBER 2023

| STATE   | LGA              | Reference Market               | 100% Total Food MEB for HH Size 5 | 100% Per Capita HH Size 5 | 70% Total Food MEB for HH Size 5 | 70% Per Capita HH Size 5 |
|---------|------------------|--------------------------------|-----------------------------------|---------------------------|----------------------------------|--------------------------|
| Adamawa | Madagali         | Madagali                       | 53,529                            | 10,706                    | 37,470                           | 7,494                    |
| Adamawa | Michika          | Michika                        | 57,766                            | 11,553                    | 40,436                           | 8,087                    |
| Borno   | Bama             | Bama                           | 56,511                            | 11,302                    | 39,557                           | 7,912                    |
| Borno   | Damboa           | Damboa                         | 52,895                            | 10,579                    | 37,026                           | 7,405                    |
| Borno   | Dikwa            | Dikwa                          | 68,185                            | 13,637                    | 47,729                           | 9,546                    |
| Borno   | Gwoza            | Gwoza Central                  | 38,136                            | 7,627                     | 26,696                           | 5,339                    |
| Borno   | Mafa             | Mafa                           | 58,273                            | 11,655                    | 40,791                           | 8,158                    |
| Borno   | Mmc & Jere       |                                | 60,878                            | 12,176                    | 42,615                           | 8,523                    |
| Borno   | Mobbar           | Damassack (CBM)                | 66,180                            | 13,236                    | 46,326                           | 9,265                    |
| Borno   | Moguno           | Monguno                        | 70,370                            | 14,074                    | 49,259                           | 9,852                    |
| Borno   | Ngala            | Gamboru                        | 68,481                            | 13,696                    | 47,937                           | 9,587                    |
| Yobe    | Bade             | Gashua Market (Sarkin Hausawa) | 61,406                            | 12,281                    | 42,984                           | 8,597                    |
| Yobe    | Damaturu         | Bayantasha Market              | 67,200                            | 13,440                    | 47,040                           | 9,408                    |
| Yobe    | Fune             | Damagun                        | 53,251                            | 10,650                    | 37,276                           | 7,455                    |
| Yobe    | Geidam           | Geidam                         | 53,888                            | 10,778                    | 37,721                           | 7,544                    |
| Yobe    | Gujba            | Gujba (Buni Yadi)              | 58,068                            | 11,614                    | 40,647                           | 8,130                    |
| Yobe    | Gulani (Tettaba) |                                | 55,105                            | 11,021                    | 38,573                           | 7,715                    |
| Yobe    | Machina          | Machina Central                | 54,045                            | 10,809                    | 37,832                           | 7,566                    |
| Yobe    | Nangere          | Dawasa                         | 56,040                            | 11,208                    | 39,228                           | 7,846                    |
| Yobe    | Potiskum         | Potiskum Grains Market         | 51,402                            | 10,280                    | 35,981                           | 7,196                    |
| Yobe    | Tarmuwa          | Babangida                      | 54,777                            | 10,955                    | 38,344                           | 7,669                    |
| Yobe    | Yunusari         | Yunusari                       | 56,940                            | 11,388                    | 39,858                           | 7,972                    |
| Yobe    | Yusufari         | Yusufari                       | 55,306                            | 11,061                    | 38,715                           | 7,743                    |

## Trends in the Cost of SMEB

- SMEB value for MMC/Jere increased by three per cent compared to the previous month, three percent when compared to three months ago, and 35 percent when compared to the same time last year.
- In Damaturu, SMEB value is seen to experience a 4 per cent increase when compared to the previous month, 18 percent increase when compared to three months ago, and a 46 percent increase when compared to the same time last year.
- The steady increase in the cost of SMEB in Damaturu LGA affects households' access to food by sapping the purchasing power of households who spend a larger proportion of their disposable income and food assistance on meeting food needs.
- In MMC/Jere, fuel prices decreased by 2.3 percent from an average price of ₦710 per litre in November to ₦694 per litre in December. Damaturu LGA observed a decrease of 25 percent from an average price of ₦935 in November to ₦700 in December 2023.
- The average petroleum pump price is seen to be highest in Monguno LGA in Borno State with an average of ₦1,700 per litre. This is followed closely by Ngala LGA in Borno State and Yunusari LGAs in Yobe State with a sharp increase of 14 percent from ₦1,150 in November to ₦1,360 in December and 88 percent from ₦692 in November to ₦1,300 in December respectively.

Trend in Fuel Prices - MMC/Jere & Damaturu

December 2022 to December 2023

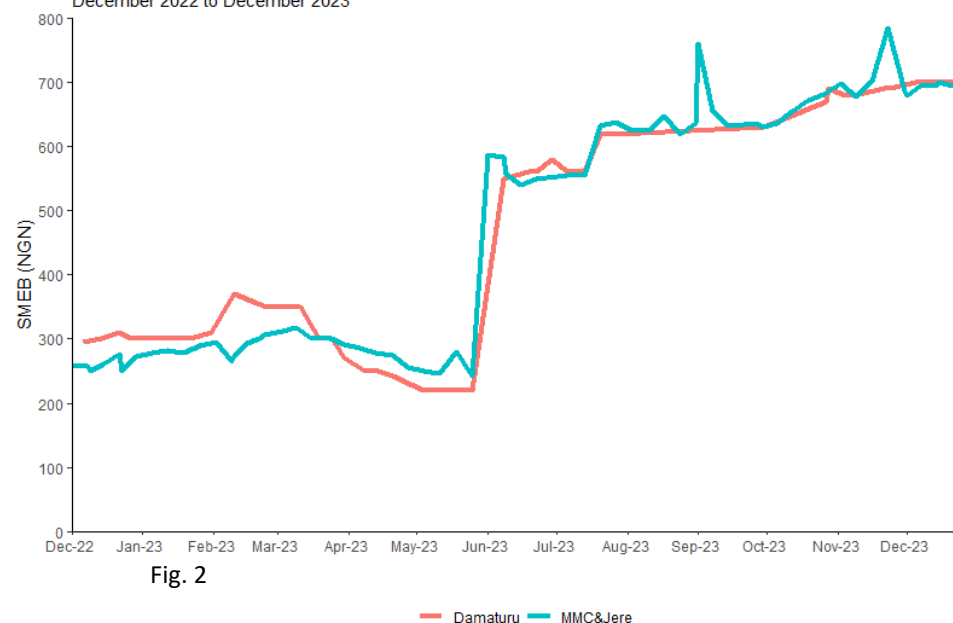


Fig. 2

source: WFP, RAM 2023

TABLE 5: December 2023 Fuel Price

| State   | Lga        | Fuel Price (Naira) |
|---------|------------|--------------------|
| Adamawa | Madagali   | 768                |
| Adamawa | Michika    | 719                |
| Borno   | Mmc & Jere | 694                |
| Borno   | Bama       | 718                |
| Borno   | Damboa     | 750                |
| Borno   | Dikwa      | 975                |
| Borno   | Gwoza      | 747                |
| Borno   | Mafa       | 635                |
| Borno   | Mobbar     | 1,125              |
| Borno   | Moguno     | 1,700              |
| Borno   | Ngala      | 1,360              |
| Yobe    | Bade       | 695                |
| Yobe    | Damaturu   | 700                |
| Yobe    | Fune       | 690                |
| Yobe    | Geidam     | 710                |
| Yobe    | Gujba      | 740                |
| Yobe    | Gulani     | 800                |
| Yobe    | Machina    | 705                |
| Yobe    | Nangere    | 700                |
| Yobe    | Potiskum   | 700                |
| Yobe    | Tarmuwa    | 700                |
| Yobe    | Yunusari   | 1,300              |
| Yobe    | Yusufari   | 900                |

Table 4: December 2023 70% SMEB Comparison

|                          | Current  | MoM      | 3 Months ago | Year on Year | Same period 5 years ago | 5 years average |
|--------------------------|----------|----------|--------------|--------------|-------------------------|-----------------|
|                          | Dec-23   | Nov-23   | Sep-23       | Dec-22       | Dec-18                  | 5 years ago     |
| <b>SMEB Values</b>       |          |          |              |              |                         |                 |
| MMC/Jere                 | ₦ 42,615 | ₦ 41,292 | ₦ 41,187     | ₦ 31,683     | ₦ 20,017                | ₦ 24,354        |
| Damaturu                 | ₦ 47,040 | ₦ 45,443 | ₦ 39,816     | ₦ 32,275     | ₦ 14,541                | ₦ 22,066        |
| <b>Percentage Change</b> |          |          |              |              |                         |                 |
| MMC/Jere                 |          | 3        | 3            | 35           | 113                     | 75              |
| Damaturu                 |          | 4        | 18           | 46           | 223                     | 113             |

# Trends in Key Staple Food Prices

## Key Food Price Trends for MMC&Jere (Borno)

December 2022 to December 2023

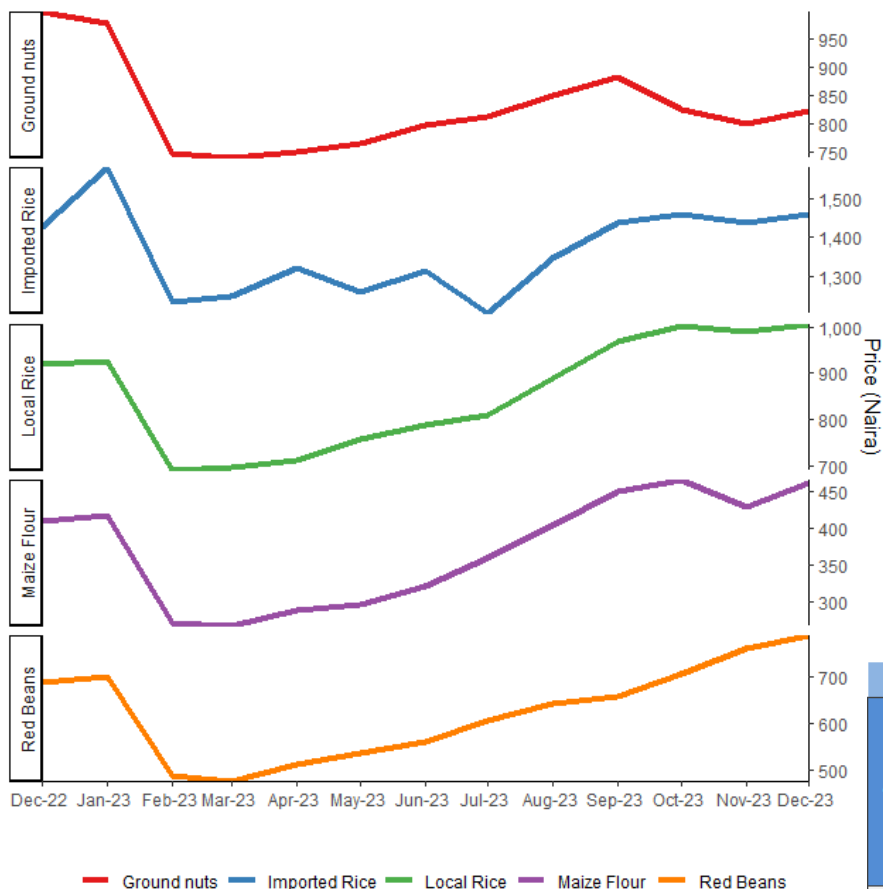


Fig. 3

source: WFP, RAM 2023

- In MMC and Jere markets, a marginal increase of 7 per cent is seen in the price of maize despite the stability seen in the prices of other key staples when compared to the previous month.
- Despite the reduction seen in the price of groundnuts, the price of red beans observed a substantial increase **of 19 per cent** in MMC and Jere markets when compared to three months ago. This is expected to accentuate food insecurity among the most vulnerable market-dependent households.
- In comparison to the same time the previous year, prices of key staples are seen to experience a substantial increase as high as 14 per cent in MMC and Jere markets, despite the reduction seen in the price of groundnuts.
- It is important to note that despite the reduction seen in the prices of maize, and red beans, the Damaturu market is seen to experience an increase **as high as 14 per cent** in the price of local rice when compared to the previous month.
- When compared to the same time three months ago, key staples in Damaturu are seen to experience a substantial increase **as high as 35 per cent**. However, the prices of groundnuts and maize are seen to remain stable when compared to the same time the previous year.

Table 6: Key Staple Food Prices in MMC/Jere and Damaturu

| Markets              | Food Item       | Variation (%) compared to last month | Variation (%) compared to 3 months | Variation (%) compared to same period last year | Markets  | Food Item       | Variation (%) compared to last month | Variation (%) compared to 3 months | Variation (%) compared to same period last year |
|----------------------|-----------------|--------------------------------------|------------------------------------|---|----------|-----------------|--------------------------------------|------------------------------------|---|
| MMC and Jere         | Maize           | 7%                                   | 3%                                 | 13%   | Damaturu | Maize           | -10%                                 | 4%                                 | 22%   |
|                      | Red beans       | 4%                                   | 19%                                | 14%   |          | Red beans       | -11%                                 | 13%                                | -24%  |
|                      | Rice (Imported) | 1%                                   | 1%                                 | 2%  |          | Rice (Imported) | 0%                                   | 25%                                | 20%   |
|                      | Rice (Local)    | 2%                                   | 4%                                 | 9%  |          | Rice (Local)    | 14%                                  | 35%                                | 14%   |
|                      | Groundnuts      | 3%                                   | -7%                                | -18%  |          | Groundnuts      | 0%                                   | 0%                                 | -6%   |
| Decrease             |                 |                                      |                                    |   |          |                 |                                      |                                    |   |
| Relative Stability   |                 |                                      |                                    |   |          |                 |                                      |                                    |   |
| Marginal Increase    |                 |                                      |                                    |   |          |                 |                                      |                                    |   |
| Substantial Increase |                 |                                      |                                    |   |          |                 |                                      |                                    |   |

Contact: Nsikak Udoh, nsikak.udoh@wfp.org

WFP Nigeria Research, Assessment and Monitoring Unit, Nigeria

<https://dataviz.vam.wfp.org>

