



Cabo Delgado
FOOD SECURITY CLUSTER
Strengthening Humanitarian Response

8th March 2023

AGENDA

- Updates on Cyclone Freddy
- Security updates
- Humanitarian updates
- FSL Updates Cabo Delgado
- AOB

Ponto de Situação: Frente fria e Tempestade Tropical Moderada FREDDY 06.03.2023 _ Dados preliminares

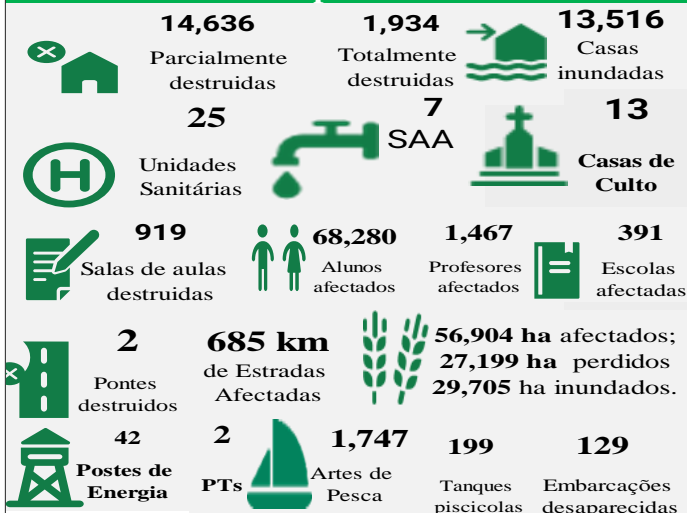


A frente fria associada a um sistema de baixas pressões na região Centro no dia 22 de Fevereiro e a Tempestade Tropical Moderada Freddy que entrou em Mocambique, no dia 24 de Fevereiro, pela parte Sul do distrito de Vilankulo entre as 11 horas e 14:30 horas locais com ventos variando de 50 a 90 Km/h e chuvas associadas, afectaram as províncias de Sofala, Inhambane, Gaza e Maputo Cidade, com seguintes impactos:

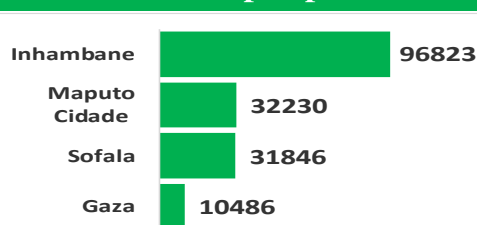
População afectada



Principais danos




Afectados por provincia



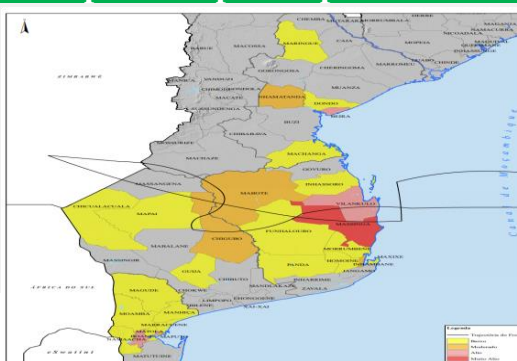
Centros de Acomodacao (CA)

15 CAs (Activos) 5,124 Pessoas
 Gaza 5 CA 1,594 Pessoas
 Inhambane 2 CA 151 pessoas
 Sofala 6 CA 3,296 pessoas
 Maputo Cidade 2 CA 82 pessoas
788 Pessoas Resgatadas

Deslocados /Desaparecidos

 **5,124 Deslocados**





Mapa de Impactos por distritos



Óbitos por provincias



Meios usados

 **4 Barcos**
 **2 Drones**
 **8 Homens das FDS**
 **1 Camião, 2 Machimbombos e 2 Carros Anfíbios**

De 01.10.2022 a 06.03.2023 o CENOE registou em todo País, a ocorrência de Chuvas Intensas, ventos fortes, acompanhados de descargas atmosféricas, queimadas descontroladas, incêndios, Inundações e Tempestada Tropical Moderada FREDDY, que resultaram em danos, com destaque para:

População Afetada

273,190



Pessoas

54,691

Famílias



117

Feridos



117

Óbitos

Principais danos



18,697

Parcialmente
Destruídas

3,780

Totalmente
Destruídas



26,085

Inundadas



686

Salas de
aulas



1,012

Escolas
afetadas

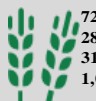


1,036,212

Alunos
afetados

11,895

Professores
Afetados



72,626.9 ha afetadas;
28,603 ha perdidas;
31,378 aves;
1,089 animais perdidos



1747 Artes de pesca
destruídas 1,747
desaparecidas

265 Tanques
pescícolas e 86
Embarcações
desaparecidas

1,208 km, 20
aquedutos e 2
pontes
destruídos



69

Unidades
Sanitárias



192

Postes de
Energia

2

PTs



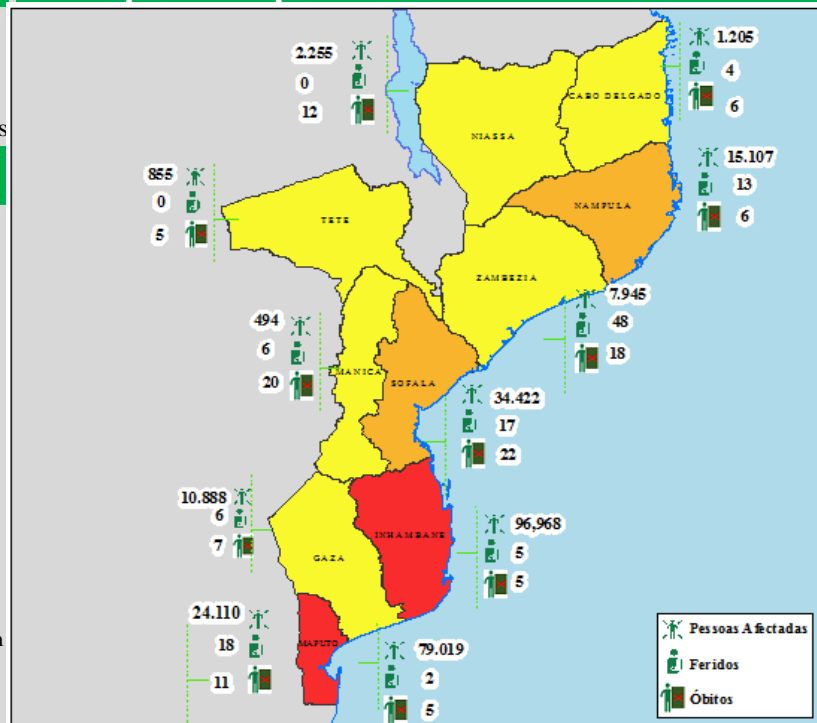
46

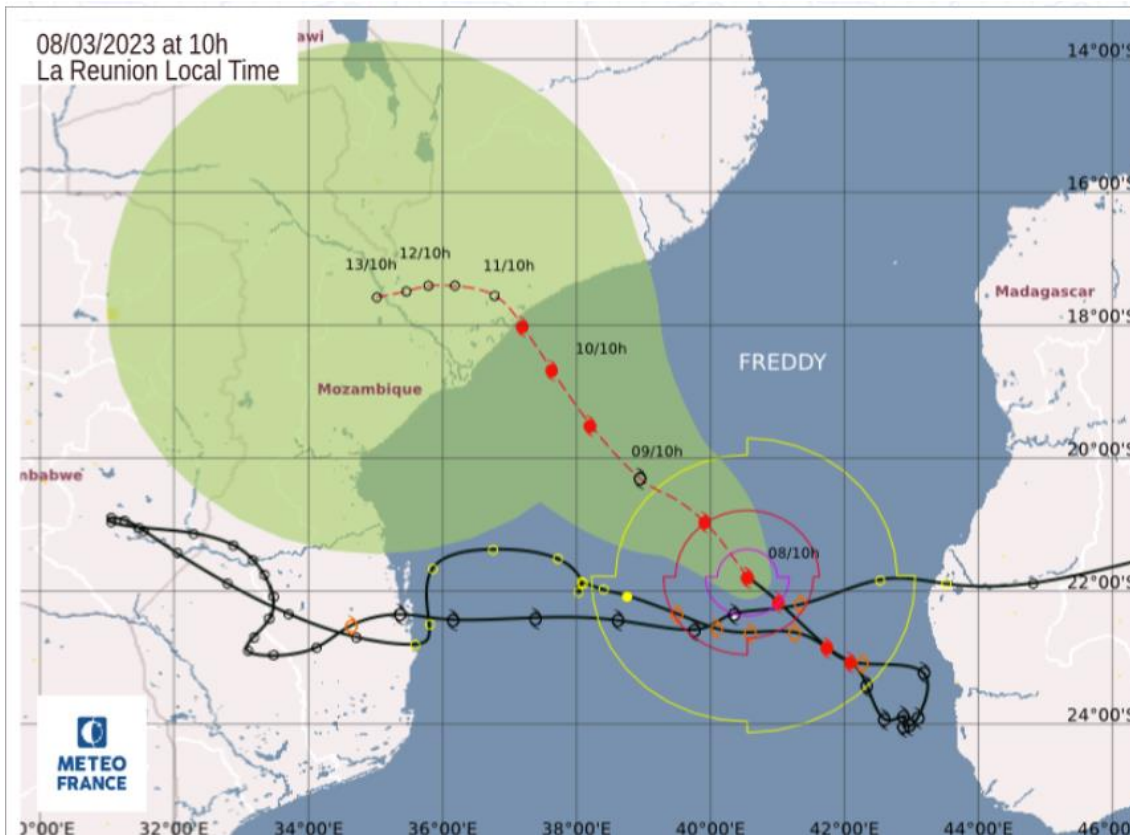
Casas de
Culto

11,250

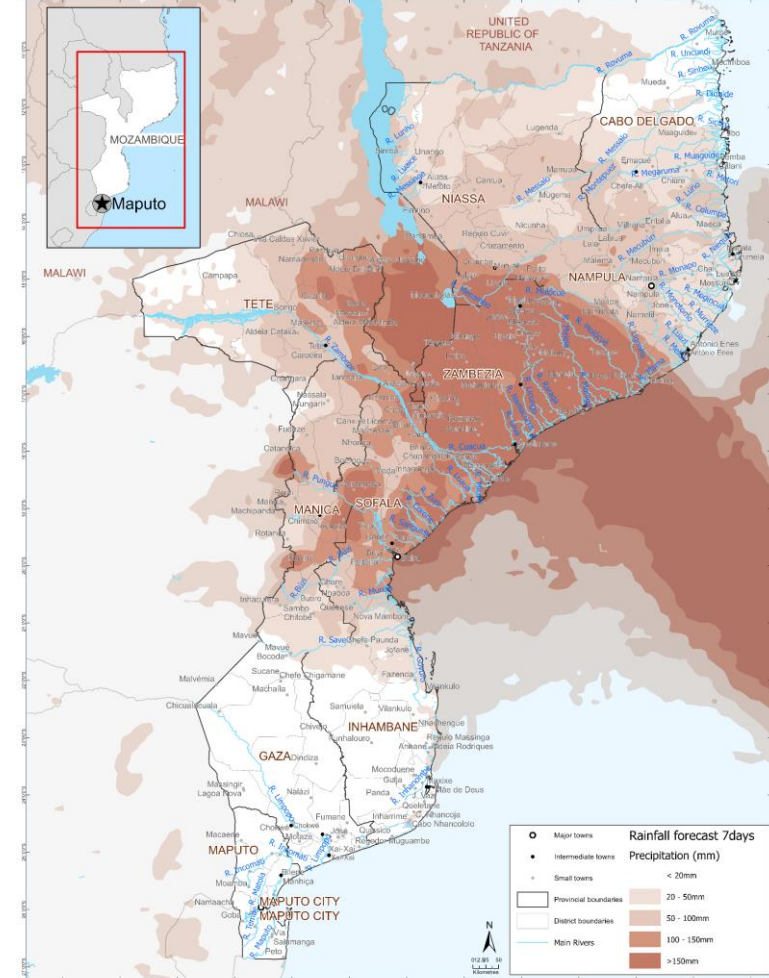
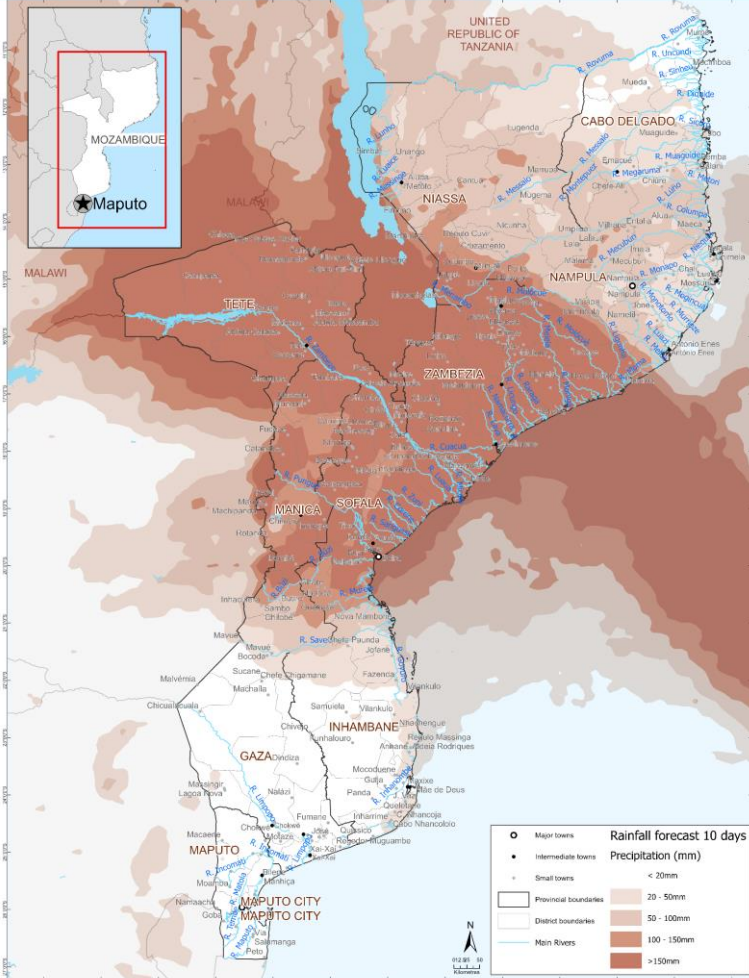
km
estradas
afetadas

Mapa de Impactos Humanos Por Provincia





Rainfall
forecast
WFP





ADAM's forecast
Wind dashboard



TROPICAL STORM

EVENT INFO



Current windspeed: 157.4 km/h

Max. Storm Surge: 0.61 m.

Current Coordinates: Lat: -22.1 Lon: 41.5

Warning ref.: JTWC - Bulletin #51

PEOPLE LIVING IN AREAS AT RISK



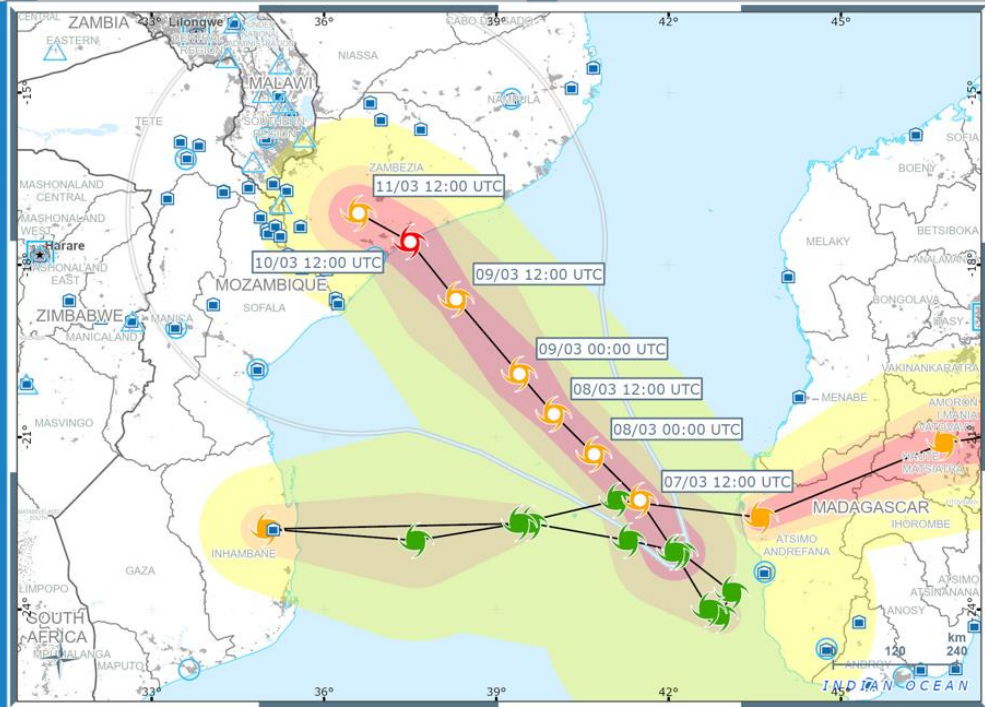
(All Countries Considered)

120 km/h windspeed ● 2,806,703

90 km/h windspeed ● 5,402,138

60 km/h windspeed ● 18,236,380

Tropical Cyclone FREDDY



World Food Programme

- WFP Country Office
- WFP Sub Office
- WFP Field Office
- WFP Warehouse
- Uncertainty
- Wind buffers: 120 km/h, 90 km/h, 60 km/h
- Wind speed: < 110 km/h, 110 - 185 km/h, 185 - 240 km/h, > 240 km/h
- Wind speed (forecast): < 110 km/h, 110 - 185 km/h, 185 - 240 km/h, > 240 km/h
- National Capital
- Major Town
- Intermediate Town
- Densely Populated Area
- International boundary
- Region boundary (adm1 level)
- Undetermined boundary and other boundary
- Coastline

ADM1_NAME	ADM2_NAME	POPULATION			TOTAL
		60 km/h	90 km/h	120 km/h	
Zambezia	Alto Molocue	72,973			72,973
	Chinde	78,268			78,268
	Derre	96,103	96,103	46,816	239,022
	Gile	76,922			76,922
	Gurue	181,602			181,602
	Ile	284,396			284,396
	Inhassunge	92,650	84,698		177,348
	Luabo	31,339			31,339
	Lugela	188,976	81,457	5,773	276,206
	Maganja Da Costa	212,933	212,933	211,892	637,758
	Milange	759,959	27,637		787,596
	Mocuba	467,558	428,339	303,092	1,198,989
	Mocubela	142,995	133,970	33,084	310,049
	Molumbo	86,227			86,227
	Mopeia	217,019	62,084	1,959	281,062
	Morrumbala	515,017	67,291		582,308
	Mulevala	123,528			123,528
	Namacurra	231,650	231,650	231,650	694,950
	Namarroi	186,877			186,877
	Nicoadala	183,476	183,476	164,230	531,182
Pebane	252,165	55,829		307,994	
Quelimane	372,023	372,023	170,877	914,923	

Analysis performed by ADAM (Automated Disaster Analysis and Mapping) on 07-03-2023 at 14:14 UTC.

ACTION POINTS

- OCHA to brief HCT Plus on level of response, gaps, and readiness – **8 March, 11am**
- Clusters to fill-in online template for the finalization of the Operational Plan – **8 March, 5pm**
- OCHA to draft initial CERF RR application (cholera, Freddy I and floods – based on HC’s recommendations) – **9 March, 1pm**
- Clusters to share information on operational presence with OCHA – **9 March, 5pm**
- OCHA to finalize Operational Plan – **10 March, 1pm**
- IMWG to look into the set-up of a 3W to monitor sectoral response – **asap**
- OCHA to share a table with key figures (from INGD) for everyone to be aligned – **regularly**
- Clusters to update templates on presence and deployments – **regularly**
- Clusters to consider pre-deployments to Zambezia – **asap**

KEY MESSAGES/AGREEMENTS

- The Operational Plan will take into account 200,000 people affected,
- Lack of partners and limited resources reported by clusters
- The importance of flexibility to diverge funds, staff, and supplies from Pemba was reiterated

Affected Population: 200,000 Coverage Period: 6 months	Funds Needed
FSL	
3 months general food distribution (1 month full ration + 2 months 50% needs with CBT)	\$12,360,594
3 months conditional food assistance (3 months 50% needs with CBT)	\$8,877,883
seeds & tools - 2nd season cereals & horticultures (36,000 HHs)	\$5,131,432
livestock - vaccination, re-stocking, H2O & supplementary feed for livestock (12,000 HHs)	\$2,199,185
TOTAL	\$28,569,094

MAPUTO:

- Tsu Chi confirmed with food assistance and livelihood support to 20,000 families in Maputo city and province (Boane & Manhica).
- Caritas to assist 600 HHs with food and agricultural inputs in Boane district, and agricultural inputso for 200 HHs in Namaacha and Moamba
- Action Aid to assist next week approx 2100 families in Boane, 600 in Namaacha and 200 in Manhica
- ADRA to assist with food kits next week in Boane. Number of HHs TBC

GAZA:

- Save the Children confirmed capacity to assist a -yet to be determined- number of families in Gaza with agricultural inputs for the second campaign.

INHAMBANE:

- WFP assisted approx 300 HHs with food assistance in the district of Mabote.

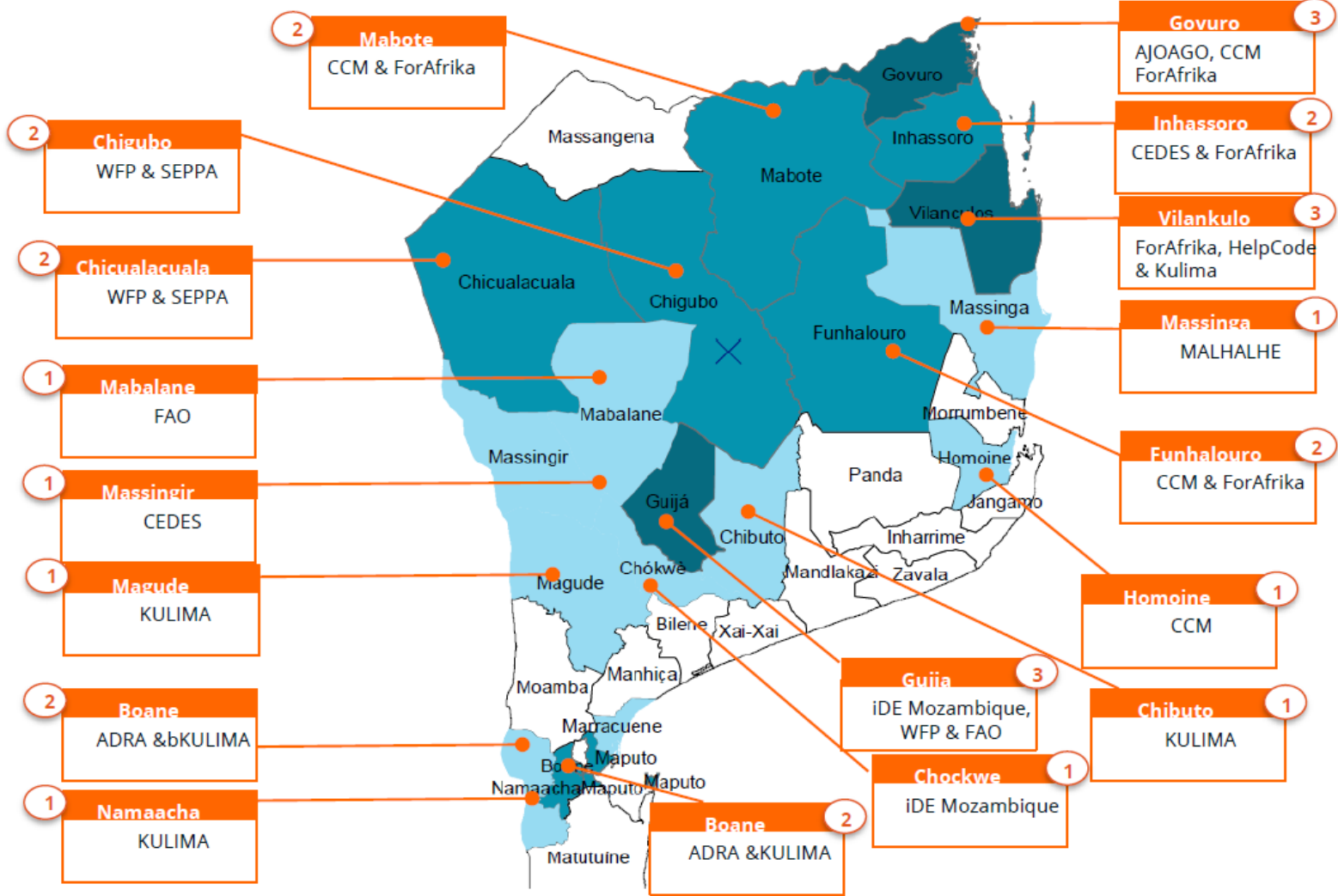
SOFALA:

- The WFP confirmed assistance to 2,263 families in accommodation centers in the cities of Beira and Nhamatanda, with a 14-day course, consisting of cereals, legumes, food oil and salt.
- FOR AFRIKA has around 15.8 Tons of fortified rice available to assist flood victims in the province.

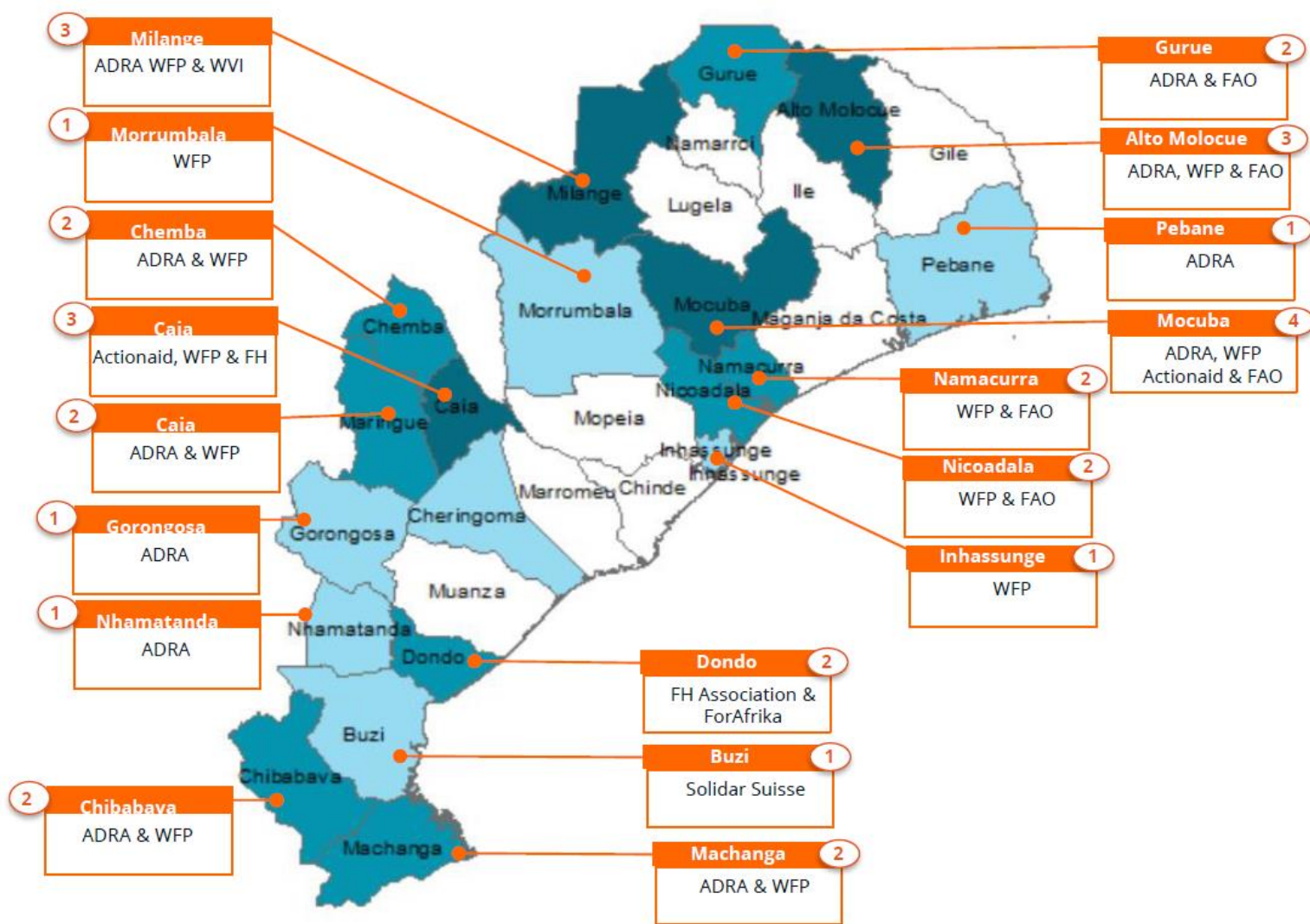


FSC partners presence Gaza & Inhambane

Number of Partners



FSC partners presence Sofala & Zambezia



SECURITY UPDATES

ATTACK(S): The NSAG (Non State Armed Group) attack in Muambula, Muidumbe district, is the first reported incident of this nature in 2023. Notable is that the attack occurred a week after the Mozambican Minister of Defense visited the area-attempting to showcase recent progress of military operations in central Cabo Delgado. The frequency of attacks in the central region of the province has indeed reduced following the launch of “Operation Vulcao IV” earlier in January 2023.

MILITARY ANNOUNCEMENT: In December of 2022, Rwanda had indicated that it was deploying additional military elements to areas experiencing new attacks in Cabo Delgado, as well as Ancuabe district to counter NSAG movement into the southern half of the province. At that time, the RDF’s (Rwandan Defense Force) strength in Mozambique was estimated at about 2,500 troops-now standing at potentially nearly 3,000 soldiers deployed in Mozambique. With around 1,000 soldiers reportedly deployed to Ancuabe, the newly arrived 300 soldiers could be sent to reinforce RDF positions in Palma and Mocimboa districts where kinetic threats of NSAG activity is on the rise.

SECURITY OPERATION(S): Sources reported that 300 additional Rwandan soldiers were deployed to Cabo Delgado to join the Rwandan Defense Forces (RDF) units currently based in the province.

VILLAGE ATTACK: Confirmation was recently received that a group of a dozen or more NSAG militants traversed Muambula village in Muidumbe district on Saturday, 25 February-killing a local farmer. The attack was fast in its duration with gunfire reported during militants exit from the area, likely in attempt to district local security forces stationed within the area. Following the incident, local residents were reported to have begun fleeing westwards towards Miteda and Matambale villages.

Security forces stationed in central Cabo Delgado (Muidumbe, Macomia) will likely pursue active NSAG cells in the area and in attempt to avert the possibility of additional attacks (as in Muambula) and facilitate stability that would allow IDPs to continue returning to their villages. Additional operations in the coming weeks could be seen in Mocimboa, Nangade, and Montepuez districts.

A slower pace of NSAG attacks may continue in the near term, however a high threat of ambushes along the R 698 and N 380 roads remains.



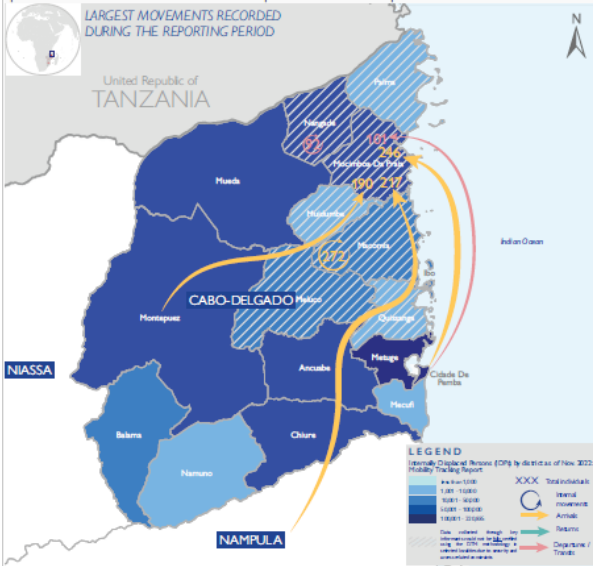
DISPLACEMENT TRACKING MATRIX - Mozambique EMERGENCY TRACKING TOOL (ETT) - Cabo Delgado

DTM Emergency Tracking Tool (ETT) is deployed to track and provide up-to-date information on sudden displacement and other population movements



ETT Report: No. 201/22 - 28 February 2023

During the reporting period (22 to 28 February 2023), a total of 23 movements were recorded - 8 arrivals (736 individuals), 13 departures (623 individuals), 2 transits (9 individuals). The largest arrival movements were recorded in Mocimboa Da Praia (736 individuals). The largest departure movements were recorded in Macomia (272 individuals), Nangade (124 individuals) and Cidade de Pemba (101 individuals). The only transit movement was recorded in Ancuabe (9 individuals). Only 1 per cent of mobile groups were displaced for the first time, 71 per cent for a second time and 28 per cent were displaced at least three times.



The depiction and use of boundaries, geographic names, and related data shown on maps and included in this report are not warranted to be error free nor do they imply judgment on the legal status of any territory, endorsement or acceptance of such boundaries by IOM.
Creation date: 01 March 2023 | Source: IOM ETT | Feedback: DTM@mozambique@iom.int | Displacement@iom.int/Mozambique | @IOM_Mozambique

KEY FIGURES

1,368

PEOPLE ON THE MOVE DURING THE REPORTING PERIOD

-

OF THE TOTAL IDPs RETURNED TO THEIR PLACE OF ORIGIN

51%

OF PEOPLE ON THE MOVE REPORTED ARE CHILDREN

91%

OF THE REPORTED PEOPLE ON THE MOVE ARE LIVING WITH THE HOST COMMUNITY

58

ELDERLY WERE REPORTED, REPRESENTING THE LARGEST VULNERABLE GROUP

DEMOGRAPHICS



MAIN REPORTED NEEDS



MAIN DISTRICTS OF ORIGIN (for arrivals)



DEFINITION OF TERMINOLOGIES

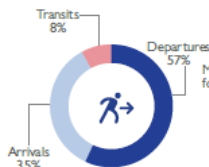
PEOPLE ON THE MOVE: Indicate the individual movements triggered by conflict/attacks, fear of attacks, search of food/livelihoods, access to humanitarian assistance, natural disaster, intended returns, relocation or family reunification.

TYPES OF MOVEMENT FLOWS: To capture the dynamic characteristics of migration, the ETT categorizes 4 types of movement flows: arrivals, departures and transits and returns. Each category is dependent on the recorded triggers of movement, duration of movement as well as movement intentions.

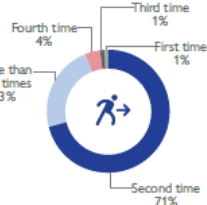
- **ARRIVALS:** Individuals arriving at the point of assessment with intention to stay more than 1 month in current location
- **TRANSITS:** Individuals arriving at the point of assessment, with an intention to spend less than one month at current location.
- **DEPARTURES:** Individuals leaving the point of assessment to another location.
- **RETURNS:** Individuals returning to their locality of origin from previous place of displacement. Please note, the returns category, for the purpose of DTM data collection, is restricted to individuals who returned to the Localities/Bairros of their individual residence, or an adjacent area based on an ofree decision. Mozambique displaced persons having returned to districts of origin without having reached their locality of origin are still displaced and as such not counted in the returns category.

When quoting, paraphrasing, or in any other way using the information mentioned in this report, the source needs to be stated appropriately as follows: "The International Organization for Migration, Displacement Tracking Matrix, February 2023"

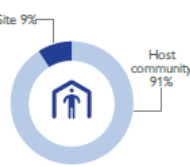
TYPE OF MOVEMENTS



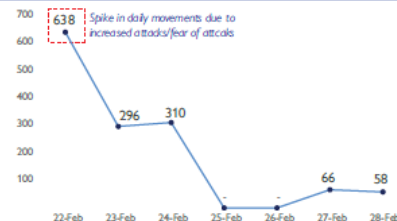
NUMBER OF TIMES DISPLACED



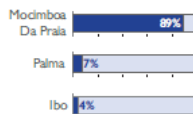
WHERE ARE THEY LIVING



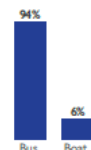
NUMBER OF INDIVIDUALS (22nd to 28th January 2023)



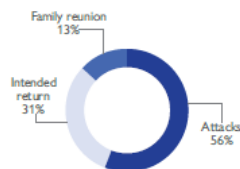
MAIN ARRIVAL DISTRICTS



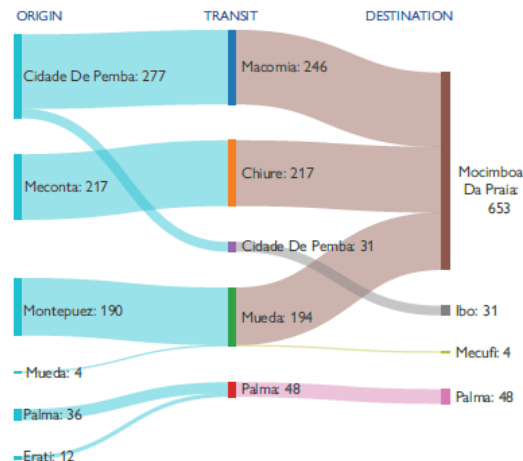
MEANS OF DISPLACEMENT



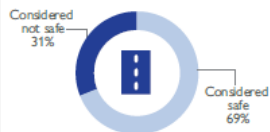
TRIGGERS OF MOVEMENT (for all arrival, return, departures, and transit movements)



DISPLACEMENT FLOWS BY DISTRICTS (ARRIVALS)



SAFETY OF ROADS



MOVEMENT INTENTIONS

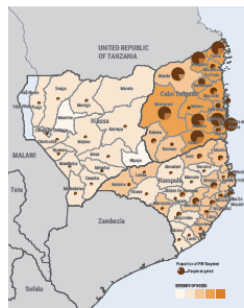


HUMANITARIAN RESPONSE PLAN MOZAMBIQUE

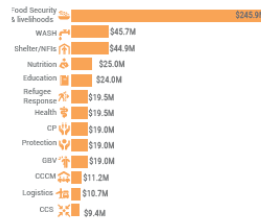
HUMANITARIAN
PROGRAMME CYCLE
2023
FEBRUARY 2023



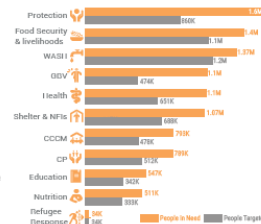
Proportion of People in Need Targeted by District



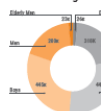
Financial Requirements by Cluster (in millions US\$)



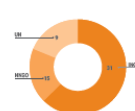
People in Need and Targeted by Clusters



People Targeted by Gender and Age



Operational Partners by Type



CLUSTER	PEOPLE IN NEED	PEOPLE TARGETED	REQUIREMENTS (US\$)	OPERATIONAL PARTNERS	NUMBER PROJECTS
Coordination and Camp Management	793K	478K	110M	4	4
Education	647K	342K	23.9M	15	15
Food Security & Livelihoods	1.4M	1.1M	245.9M	14	14
Health	1.1M	651K	19.5M	11	11
Nutrition	511K	393K	25.0M	10	11
Protection	1.6M	860K	57.0M	22	23
Shelter & NFIs	1.1M	688K	44.9M	10	10
WASH	1.4M	1.2M	45.7M	21	21
Coordination & Common Services	-	-	9.4M	3	6
Logistics	-	-	10.7M	1	1
Refugees Response	34K	34K	10.5M	1	1
Total	2.0M	1.6M	512.9M	55	117

Food Security and Livelihoods



PEOPLE IN NEED	PEOPLE TARGETED	REQUIREMENTS (US\$)	PARTNERS	PROJECTS
1.4M	1.1M	\$245.9M	14	14

Food Security & Livelihoods Objectives, Indicators and Targets

CLUSTER OBJECTIVE	INDICATOR	IN NEED	TARGETED
Life-Saving Objective: Provision of Life-saving food assistance to acutely food insecure population including displaced population, host communities and returnees. Relates to HRP Life-Saving Strategic Objective 1	Number of IDPs assisted disaggregated by age & gender, MT/value of food provided.	1,435,751	1,108,955
	Number of targeted people receiving regular life-saving food assistance by modality disaggregated by age & gender; MT/value of food provided (minimum 10 months covered).	1,435,751	1,108,955
	Number of staff from partners' organizations and government counterparts trained disaggregated by age and gender.	50	50
Life-Sustaining: Emergency Support to recover agriculture-based and diversified livelihoods for acutely food insecure population including displaced population, host communities and returnees. Relates to HRP Life-Sustaining Strategic Objective 2	Number of targeted people receiving livelihood assistance disaggregated by age and gender.	1,435,751	1,051,110
	Number of targeted people with increased access to livelihood inputs for resumed food production and self-reliance.	1,435,751	1,051,110
	Number of targeted people with enhanced food and nutrition security.	1,435,751	1,051,110
	Number of staff from partners' organizations and government counterparts trained disaggregated by age and gender.	50	50

Response Modalities

The FSL response will ensure that needs are met in a manner that responds to the needs of the different target groups while considering access constraints:

- **Immediate Response Rations (IRR):** This response modality of food assistance will primarily target beneficiaries that are newly displaced, on the move or in hard-to-reach areas, covering 100 per cent of daily requirements for 7 days through ready-to-eat rations.
- **Regular General Food Distribution (GFD):** Registered IDPs staying with host communities or in temporary centres will receive in-kind food, commodity vouchers and value voucher modalities depending on local context and market assessment findings. Rations will cover 100 per cent of daily kilocalorie needs for those most in need, and a reduced ration for those who have gained access to other sources of income. Similarly, the current transfer value for the CBT modality is 3,600 MZN and may be subject to change depending on beneficiaries' changing access to livelihoods as well as relevant findings from market assessments
- **Emergency livelihoods support and Food Assistance for Assets (FFA) / Cash for Work (CFW):** Host communities and resettled displaced populations will be receiving support to emergency livelihoods which aims to restore and strengthen productive assets and create livelihood opportunities. Activities include provision of agricultural and fisheries inputs, asset protection, support to household production, income generation opportunities, postharvest and storage infrastructures, rehabilitation of critical infrastructure and associated trainings as well as enhancing communities' capacity to sustain their productive assets through training.

- **FSL updates**

Tiago Coucelo

UPDATES - FOOD ASSISTANCE & LIVELIHOODS

- Cycle of March / April (half rations)

WFP assistance:

- CBT in Mueda and inkind in Ibo already started, to start Friday in Ancuabe and then next week in the remaining districts.
 - Northern districts – 190K (Muidumbe, Nangade, Quissanga, Macomia, Mocimboa da Praia and Palma)
 - Districts (VBT) to start later.
 - Target: 580,000 people (no assistance in Pemba).
- ❖ WFP – V&R from VBT to start in Pemba an Ibo
- Coordination of other partners – food assistance

- JRP / Emergency Assistance being done in Montepuez.
- Compilation of effective assistance provided in this main agricultural season - ongoing.
- Post distribution monitoring to be done by several partners and by cluster via 5w
- Livelihoods activities to be implemented – IGA and others.
- Finalization of planning matrix for 2nd agricultural season – to be sent to partners asap.

- **AOB**

- FSC next meetings 22nd March
- Presential meetings
- Partners presentations

Obrigado



FOOD SECURITY CLUSTER

Strengthening Humanitarian Response