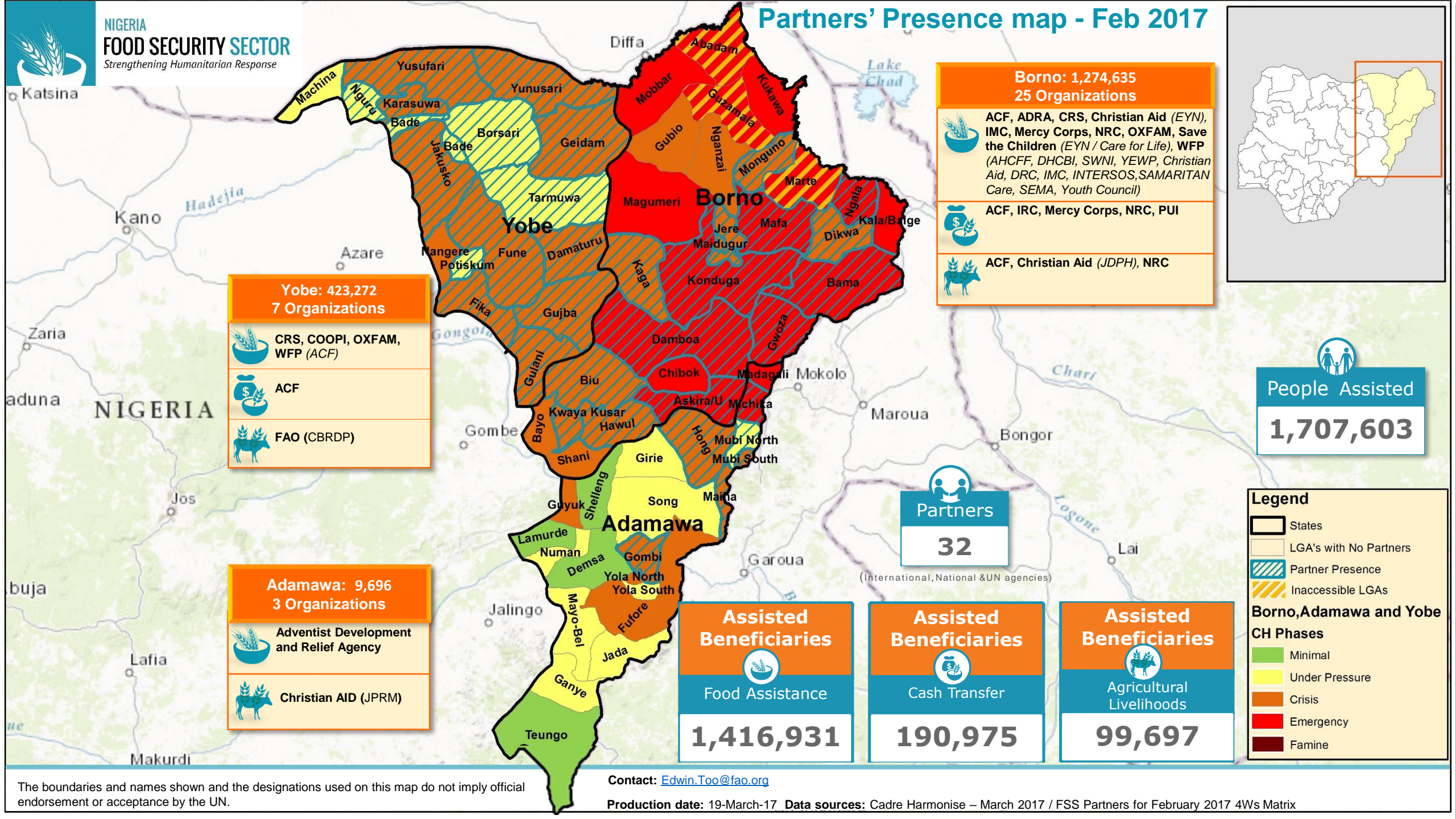


# Partners' Presence map - Feb 2017



**Yobe: 423,272**  
**7 Organizations**

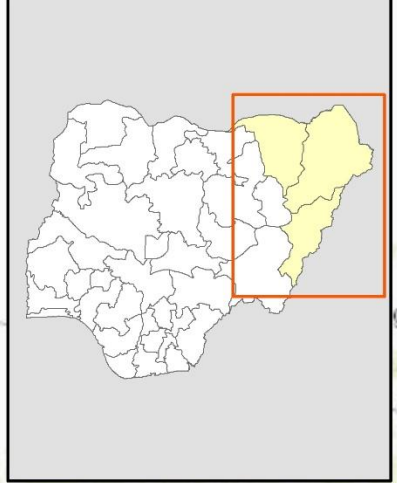
- CRS, COOPI, OXFAM, WFP (ACF)
- ACF
- FAO (CBRDP)

**Adamawa: 9,696**  
**3 Organizations**

- Adventist Development and Relief Agency
- Christian AID (JPRM)

**Borno: 1,274,635**  
**25 Organizations**

- ACF, ADRA, CRS, Christian Aid (EYN), IMC, Mercy Corps, NRC, OXFAM, Save the Children (EYN / Care for Life), WFP (AHCFF, DHCBI, SWNI, YEWP, Christian Aid, DRC, IMC, INTERSOS, SAMARITAN Care, SEMA, Youth Council)
- ACF, IRC, Mercy Corps, NRC, PUI
- ACF, Christian Aid (JDPH), NRC



**People Assisted**  
**1,707,603**

**Partners**  
**32**  
 (International, National & UN agencies)

**Assisted Beneficiaries**  
 Food Assistance  
**1,416,931**

**Assisted Beneficiaries**  
 Cash Transfer  
**190,975**

**Assisted Beneficiaries**  
 Agricultural Livelihoods  
**99,697**

**Legend**

- States
- LGA's with No Partners
- Partner Presence
- Inaccessible LGAs

**Borno, Adamawa and Yobe CH Phases**

- Minimal
- Under Pressure
- Crisis
- Emergency
- Famine

The boundaries and names shown and the designations used on this map do not imply official endorsement or acceptance by the UN.

Contact: [Edwin.Too@fao.org](mailto:Edwin.Too@fao.org)

Production date: 19-March-17 Data sources: Cadre Harmonise – March 2017 / FSS Partners for February 2017 4Ws Matrix

# Partners' Presence in Borno State – Feb 2017

**Assisted Beneficiaries**

Food Assistance

**1,096,776**

**Assisted Beneficiaries**

Cash Transfer

**120,828**

**Assisted Beneficiaries**

Agricultural Livelihoods

**57,031**

**Partners**

**25**

(International, National & UN agencies)

**Jere: 197,131**  
12 Organization

CRS, IMC, NRC, Save the Children (EYN, Care for life), WFP (Christian Aid, DRC, YFWP), ACF, IRC, ACF, NRC

**Kaga: 52,502**  
3 Organization

WFP (DRC, IMC)

**Damboa: 141,918**  
2 Organization

OXFAM, Mercy Corps, Mercy Corps

**Biu: 46,396**  
3 Organizations

Mercy Corps, Save the children (EYN)

**Kwaya Kusar: 4,673**  
3 Organization

Mercy Corps, Christian Aid (CHJPID)

**Monguno: 117,857**  
2 Organization

ACF, WFP

**Dikwa: 121,860**  
1 Organization

WFP

**Ngala: 120,060**  
1 Organization

WFP

**Mafa: 19,800**  
2 Organization

WFP (DRC)

**Maiduguri: 238,885**  
13 Organization

ADRA, IMC, NRC, Save the Children (EYN), WFP (Christian Aid, AHCFF, DHCPI, SEMA), ACF, IRC, NRC, PUI, ACF, NRC

**Konduga: 111,976**  
9 Organization

Christian Aid (EYN), OXFAM, WFP (DRC, IMC, SAMARITAN CARE, Youth Council), NRC

**Bama: 32,849**  
3 Organization

WFP (DRC, INTERSOS)

**Gwoza: 52,868**  
2 Organization

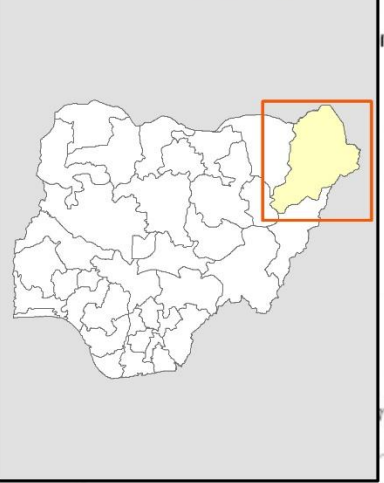
WFP (SWNI)

**Askira Uba: 3,570**  
1 Organization

OXFAM

**Hawul: 12,290**  
3 Organization

Mercy Corps, Christian Aid (CHJPID)



**People Assisted**

**1,274,635**

**Legend**

- States
- LGA - NO Partner Presence
- LGA - Partner Presence
- Inaccessible LGAs

**Borno Current Situation**

**CH Phases (March - May 2017)**

- Minimal
- Under Pressure
- Crisis
- Emergency
- Famine

The boundaries and names shown and the designations used on this map do not imply official endorsement or acceptance by the UN.

Contact: [Edwin.Too@fao.org](mailto:Edwin.Too@fao.org)

Production date: 19-March-17 Data sources: Cadre Harmonise – March 2017 / FSS Partners for February 2017 4Ws Matrix

# Partners' Presence in Yobe State

Feb 2017

**Yusufari: 18,405**  
1 Organizations

WFP

**Nguru: 6,003**  
1 Organizations

WFP

**Karasuwa: 10,756**  
4 Organization

CRS (NIRA, FOMWAN, NEYIF)

**Bade: 22,791**  
5 Organizations

WFP

ACF

FAO (ADP Yobe, FADAMA III Yobe)

**Jakusko: 89,344**  
8 Organizations

CRS (NIRA, FOMWAN, NEYIF), WFP

FAO (ADP Yobe, FADAMA III Yobe)

**Potiskum: 12,751**  
2 Organizations

COOPI

ACF

**Assisted Beneficiaries**

Food Assistance

**318,055**

**Assisted Beneficiaries**

Cash Transfer

**70,147**

**Assisted Beneficiaries**

Agricultural Livelihoods

**35,070**

**Fika: 4,384**  
2 Organization

COOPI, OXFAM

**Yunusari: 25,847**  
1 Organizations

WFP

**Bursari: 24,424**  
4 Organization

CRS (NIRA, FOMWAN, NEYIF)

**Geidam: 42,435**  
1 Organization

WFP

**Tarmuwa: 8,288**  
1 Organization

ACF

**Fune: 7,721**  
1 Organization

ACF

**Damaturu: 25,052**  
3 Organizations

COOPI, WFP

ACF

**Gujba: 80,277**  
5 Organizations

WFP(ACF)

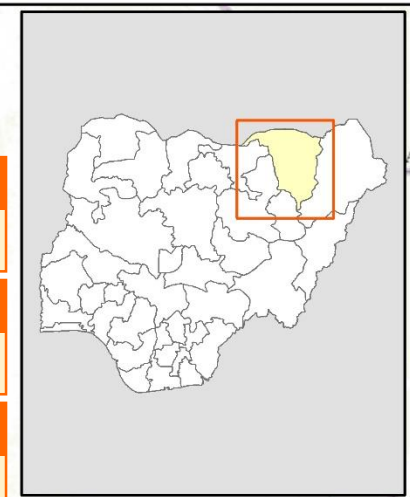
ACF

FAO (ADP Yobe, FADAMA III Yobe)

**Gulani: 7,000**  
5 Organization

WFP(ACF)

FAO (ADP Yobe, FADAMA III Yobe)



**People Assisted**

**423,272**

**Partners**

**7**

**Legend**

- States
- LGA - NO Partner Presence
- LGA - Partner Presence

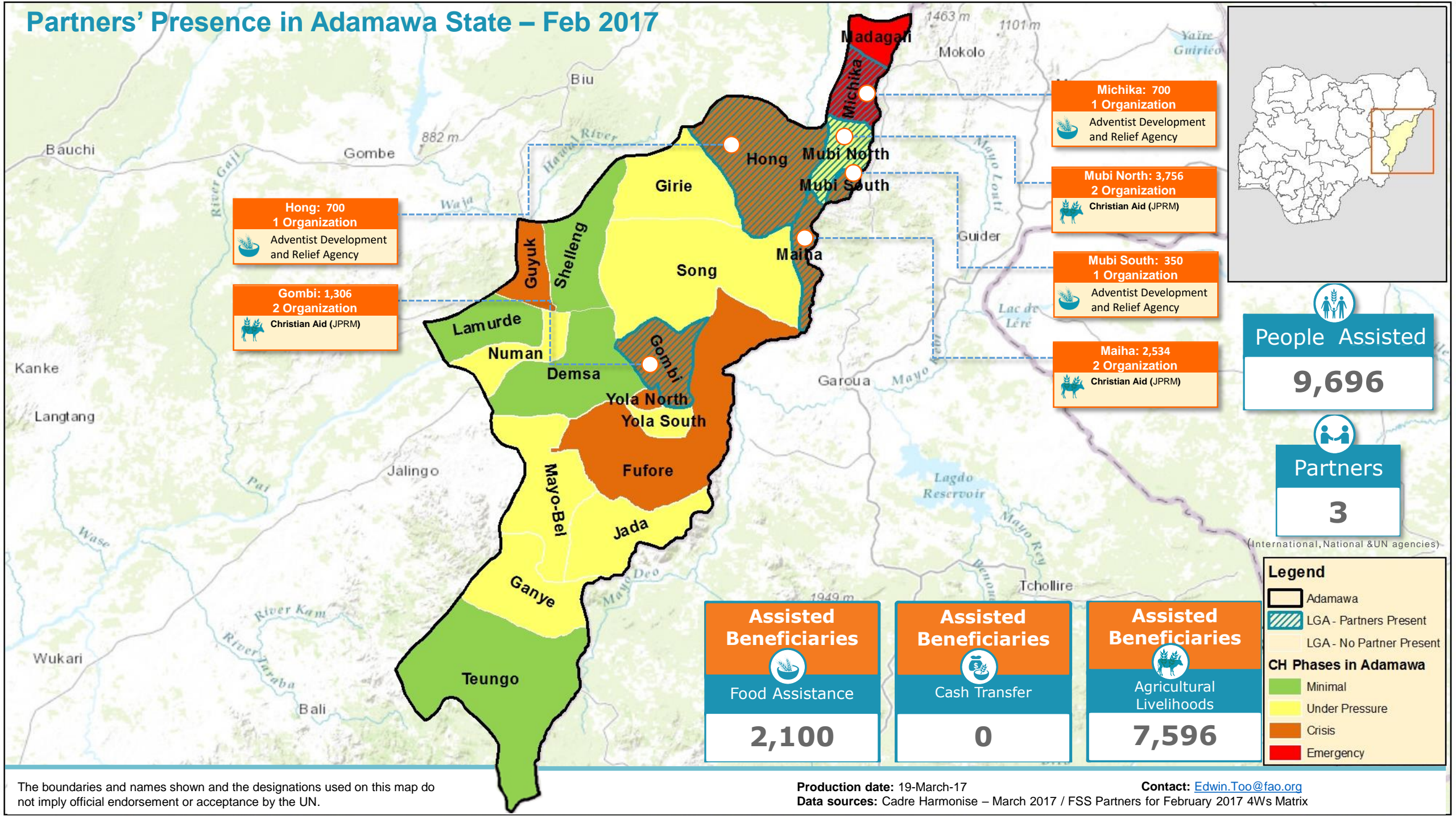
**Yobe Current Situation**

**CH Phases (March - May 2017)**

- Minimal
- Under Pressure
- Crisis
- Emergency

The boundaries and names shown and the designations used on this map do not imply official endorsement or acceptance by the UN.

# Partners' Presence in Adamawa State – Feb 2017



The boundaries and names shown and the designations used on this map do not imply official endorsement or acceptance by the UN.

Production date: 19-March-17

Contact: [Edwin.Too@fao.org](mailto:Edwin.Too@fao.org)

Data sources: Cadre Harmonise – March 2017 / FSS Partners for February 2017 4Ws Matrix