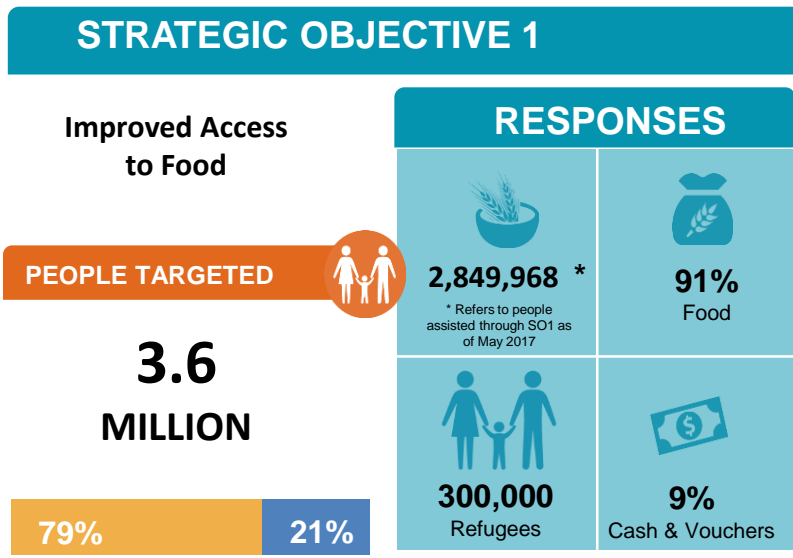


COUNTRY RESPONSE UPDATE

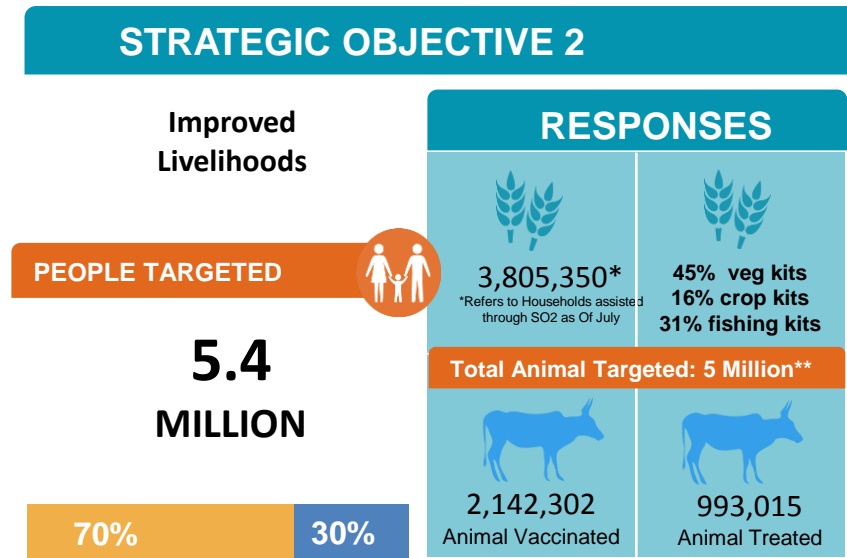
As of July, FSL cluster assisted over 2.84 million people for strategic objective 1 with activities aimed at improving access to food through different modalities in all States of South Sudan. 91% of beneficiaries received food and 9% received Cash and Vouchers. In addition, under strategic objective 2 more than 634,225 households are being assisted with livelihood and livestock inputs/assistance to improve resilience of the rural population. According to the May IPC 2017, there are 3.6 million people in need of direct food assistance and 5.4 million people (900 thousand households) in need of livelihood support in South Sudan.

After the February declaration of famine in Central Unity a scaled up response was mounted. The recent review after the scaled up response by WFP and partners in August 2017 considered this response was effective with a number of lessons learnt. Conflict induced food insecurity however in the first half of 2017 had intensified humanitarian needs especially in central and Northern Jonglei (IPC 4 and 3 locations).

Out of US\$ 689.5 million requested in the HRP funding totalling 73% (i.e. \$503 million) has so far been received as per the Financial Tracking System(FTS).



**Targets are generated based on partners target and IPC data as of May 2017.*

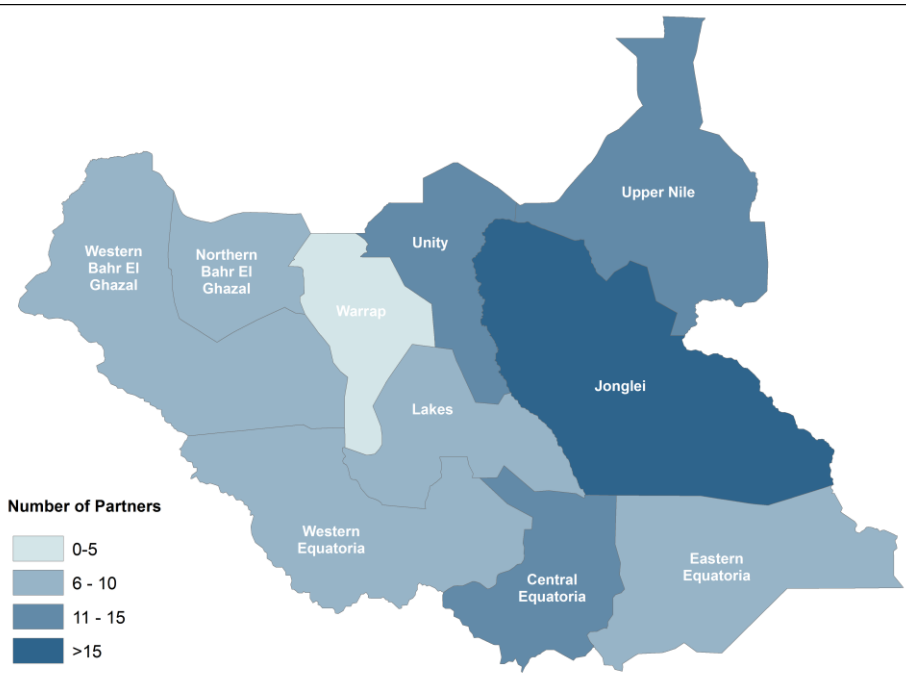


***Animal target is based on FAO target*

PARTNERS PRESENCE

82 TOTAL NUMBER OF PARTNERS

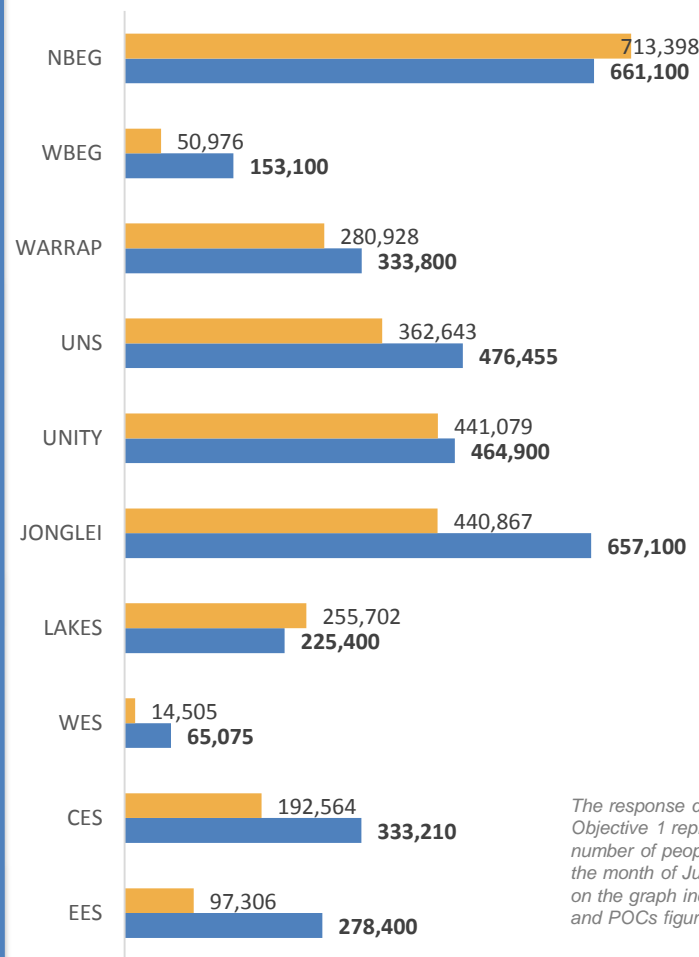
SOUTH SUDAN: PARTNERS' PRESENCE MAP



FUNDING STATUS

Total Appeal \$689.5M (503 M) **73 % Funded** **27 % Unmet**

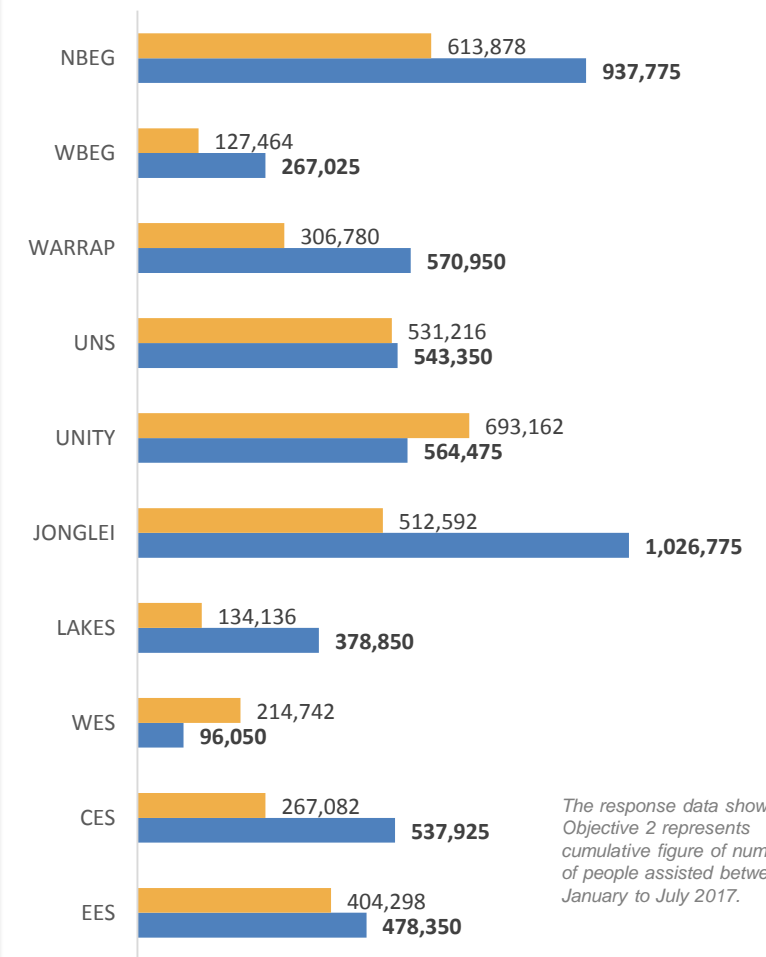
TARGET VS RESPONSE-OBJECTIVE 1



The response data shown for Objective 1 represents the number of people assisted in the month of July. The figures on the graph include Refugee and POCs figures.

XX- TARGET

TARGET VS RESPONSE-OBJECTIVE 2



The response data shown for Objective 2 represents cumulative figure of number of people assisted between January to July 2017.

XX ASSISTED