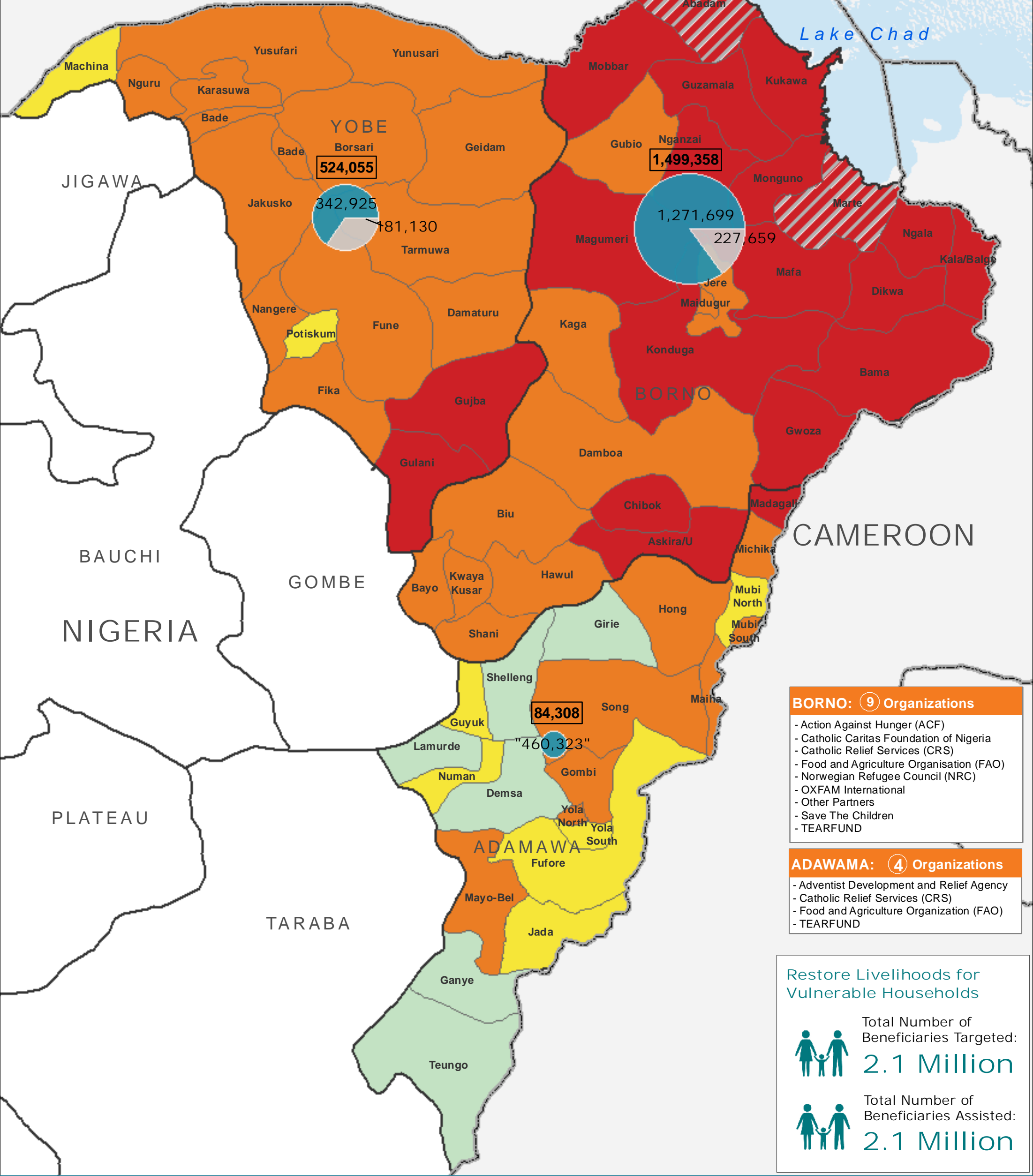




**YOBE: 3 Organizations**  
Catholic Relief Services (CRS)  
Food and Agriculture Organization (FAO)  
Other Partners



**BORNO: 9 Organizations**

- Action Against Hunger (ACF)
- Catholic Caritas Foundation of Nigeria
- Catholic Relief Services (CRS)
- Food and Agriculture Organisation (FAO)
- Norwegian Refugee Council (NRC)
- OXFAM International
- Other Partners
- Save The Children
- TEARFUND

**ADAWAMA: 4 Organizations**

- Adventist Development and Relief Agency
- Catholic Relief Services (CRS)
- Food and Agriculture Organization (FAO)
- TEARFUND

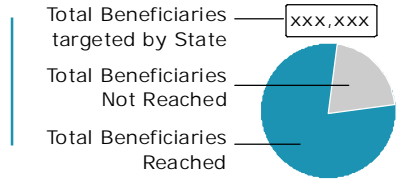
**Restore Livelihoods for Vulnerable Households**

Total Number of Beneficiaries Targeted: **2.1 Million**

Total Number of Beneficiaries Assisted: **2.1 Million**

Date Created: 14 October 2017  
Contact: Sara.Netzer@fao.org  
Website: <http://fsccluster.org/nigeria>  
Prepared by: FSS Nigeria

Map Reference:  
nga\_fss\_SO2\_GapAnalysis\_A3P\_September2017



**Cadre Harmonise**  
June - August 2017 (Projection)

- No Data
- Minimal
- Stressed
- Crisis
- Emergency
- Famine

- National Capital
- Major Town
- Intermediate Town
- Small Town
- Adamawa, Borno and Yobe States
- State Boundary

Data sources: WFP, UNGIWI, GeoNames, GAUL

The boundaries and names shown and the designations used on this map do not imply official endorsement or acceptance by the United Nations.