

## PEOPLE TARGETED – 2021 HRP



**4.3**

**Million People in Need**  
(March Period: March – May 2021 – Population in Phase 3-5)

3 North-East States

## FUNDING REQUIRED – 2021 HRP

**354\***

MILLION

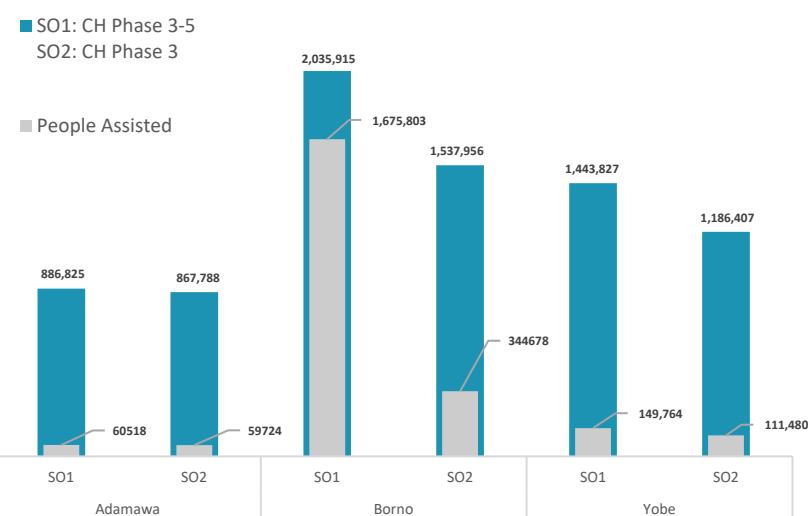


\$XXM  
Unmet

\$XX  
Resourced

Data Source: OCHA Financial Tracking System (FTS) (as of 25 April 2021)

## INTERVENTION BY STATE – SO1 & SO2



## SAFE ACCESS TO FUEL & ENERGY



**57 HHs**

supported with fuel efficient stoves, use/production of alternative energy, production of fuel-efficient stoves, and SAFE & protection awareness raising outreach

400 beneficiaries were trained in the production of briquette in Maiduguri LGA, Borno State



## FOOD SECURITY OBJECTIVE 1: Food Assistance

**SO1 - Improve the most vulnerable crisis-affected people's access to timely and appropriate food assistance to meet their immediate food needs**



**3.5M targeted**

Population in Phase 3-5 (March 2021 Cadre Harmonisé for current period: March – May 2021)



**1.9M assisted**

Number of people assisted in April 2021 under SO1 (In-Kind and Cash/Voucher)



**898,019** people assisted with In-Kind



**993,066** people assisted with Cash/Voucher



**29**

Number of Partners who reported **Food Assistance** interventions in April 2021 including implementing partners

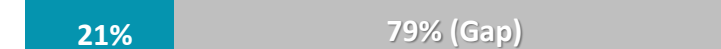
## FOOD SECURITY OBJECTIVE 2: Agriculture and Livelihoods

**SO2 - Strengthen resilience of crisis-affected people by re-establishing, improving and diversifying key agriculture livelihoods**



**3.0M targeted**

Population in Phase 3 (March 2021 Cadre Harmonisé for current period: March – May 2021)



**516k assisted**

Number of people assisted in April 2021 under SO2 (In-Kind and Cash/Voucher)



**383,087** people assisted with In-Kind



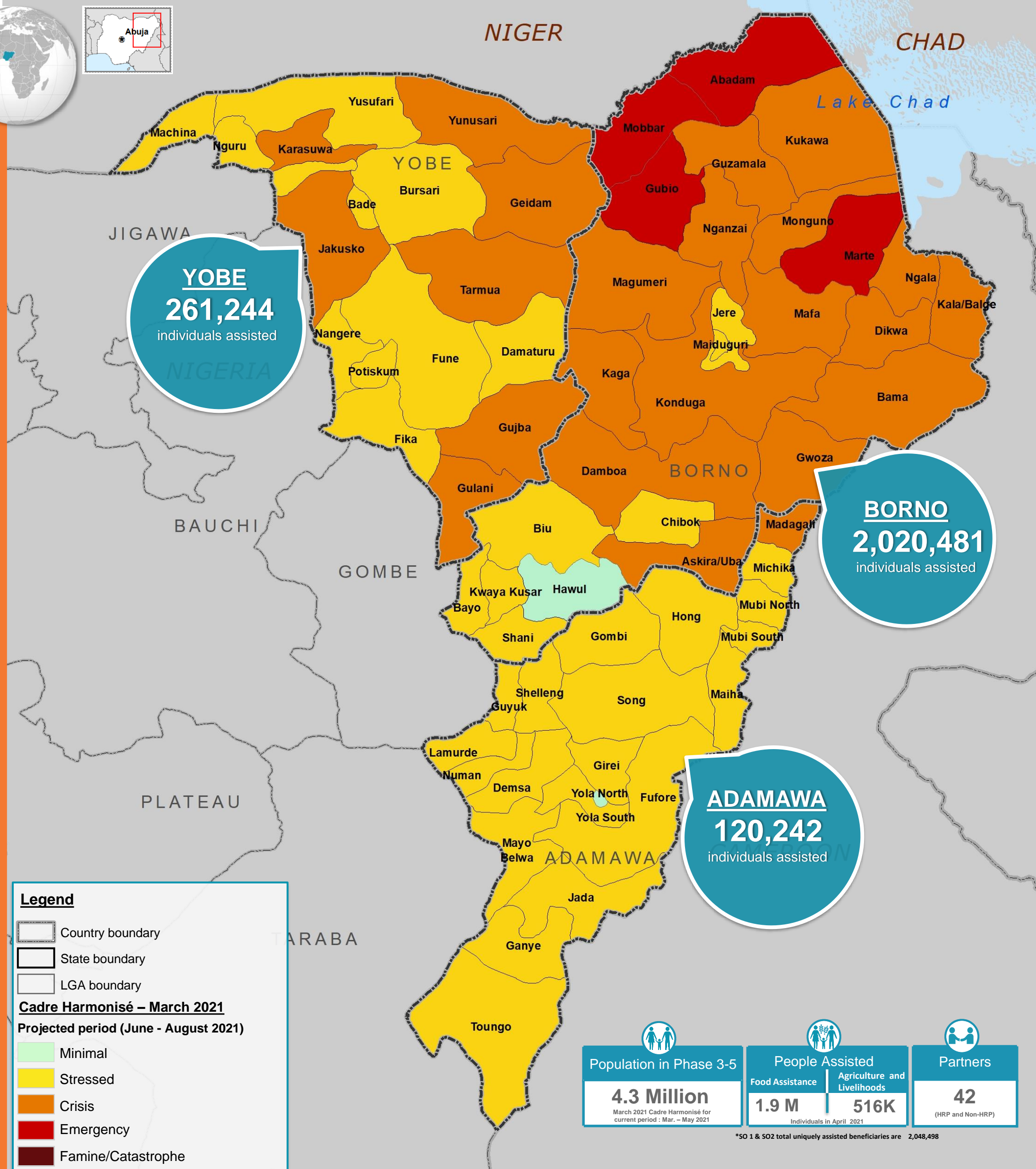
**132,795** people assisted with Cash/Voucher



**26**

Number of Partners who reported **Agriculture and Livelihoods** interventions in April 2021 including implementing partners

MARCH 2020 CADRE HARMONISÉ ANALYSIS-PROJECTED PERIOD (March – May 2021)



### Legend

- Country boundary
- State boundary
- LGA boundary

### Cadre Harmonisé – March 2021

Projected period (June - August 2021)

- Minimal
- Stressed
- Crisis
- Emergency
- Famine/Catastrophe

Population in Phase 3-5	People Assisted	Partners
<b>4.3 Million</b> March 2021 Cadre Harmonisé for current period: Mar. – May 2021	<b>1.9 M</b> Food Assistance Individuals in April 2021	<b>42</b> Agriculture and Livelihoods (HRP and Non-HRP)

\*SO 1 & SO2 total uniquely assisted beneficiaries are 2,048,498

The boundaries and names shown and the designations used on this map do not imply official endorsement or acceptance by the UN.

Sector's online dashboard:

<https://public.tableau.com/profile/ng.food.security.sector#/vizhome/shared/S4CCXRC39>

**Disclaimer:** This dashboard captures information available at the moment of production based on partners' reporting.

**Production Date:** 30 May 2021

**Data sources:** FSS 5Ws: April 2021, Cadre Harmonisé March 2021

**Contact:** Nigeria Food Security Sector  
[info.nigeria@fscluster.org](mailto:info.nigeria@fscluster.org)