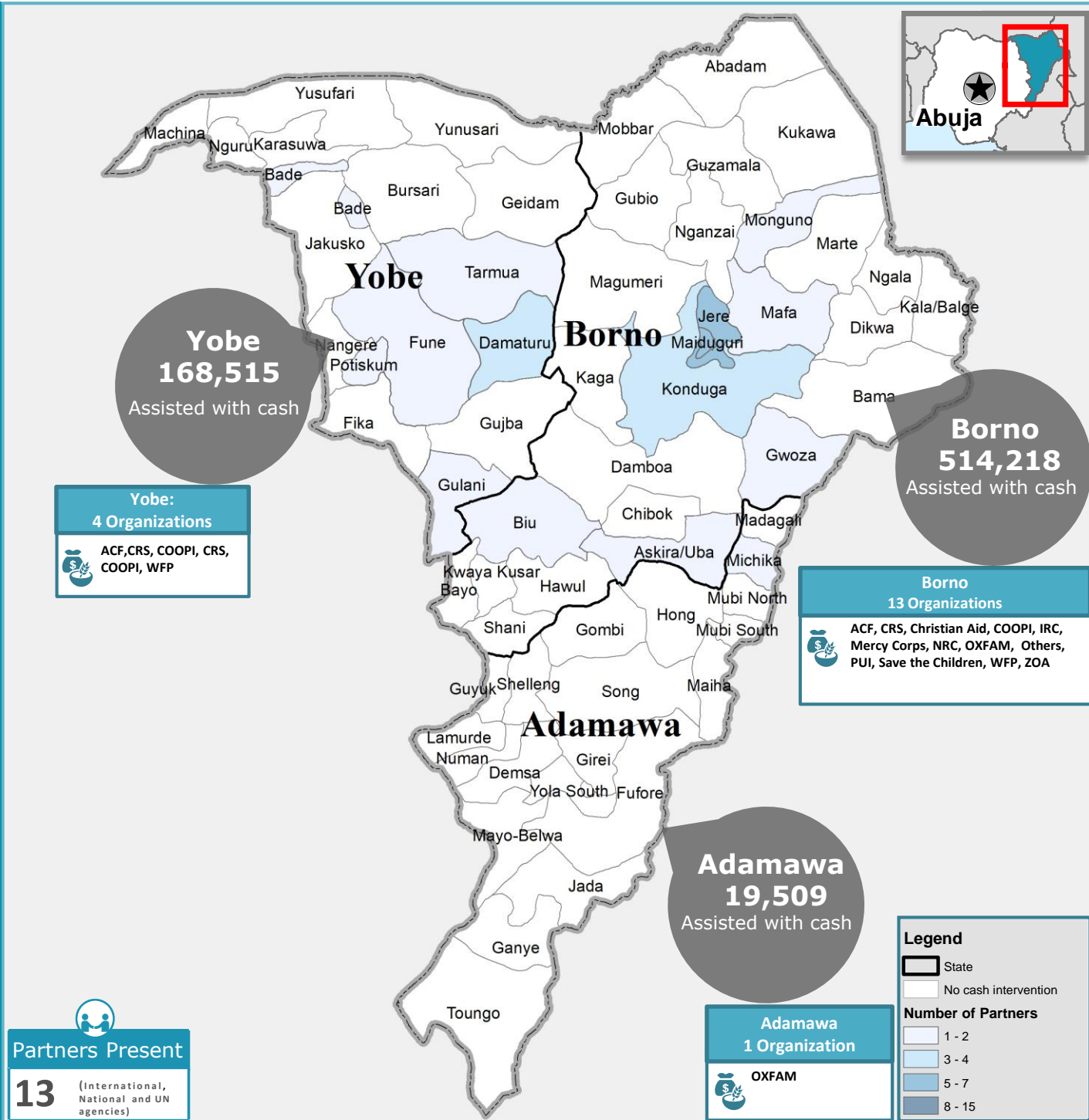
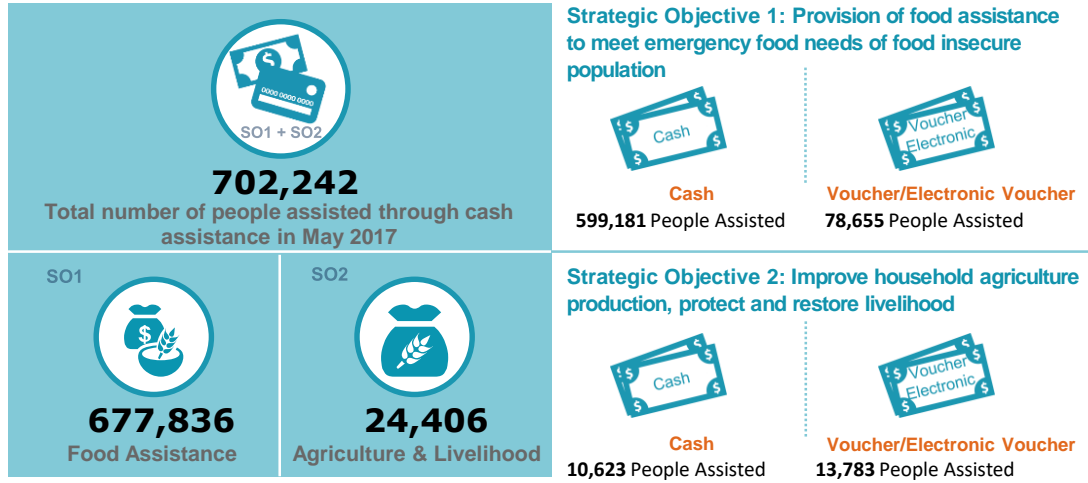


In May 2017, the Food Security Sector assisted **2,288,950** people of which **31%** were assisted through cash based transfers, including vouchers and electronic vouchers. Of those assisted with cash based transfers, 97% were for SO 1 (Food Assistance), with the remaining for SO 2 (Agriculture and Livelihoods). Cash based transfers are being utilized primarily in Borno State in Jere and Maiduguri LGAs. The Cash Working Group based in Maiduguri is exploring how best to assist partners interested in scaling in other LGAs.

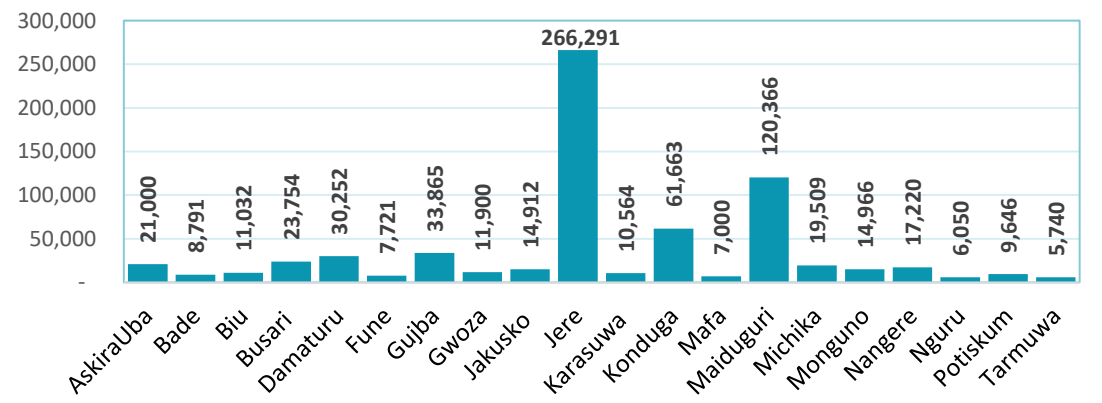
NORTH EAST NIGERIA CASH RESPONSE PARTNERS MAP



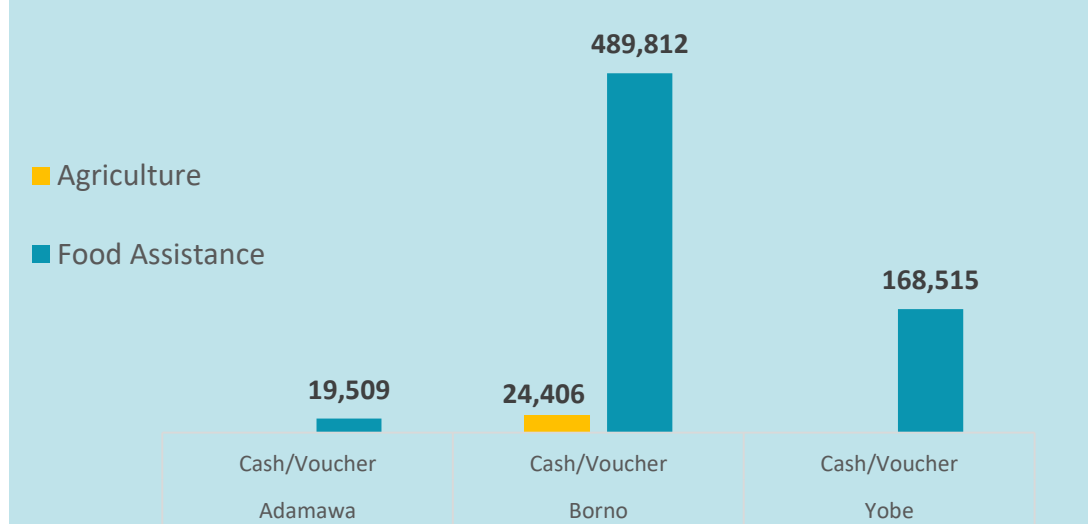
KEY FACTS & FIGURES ON CASH RESPONSES – MAY 2017



CASH BENEFICIARIES BY LOCAL GOVERNMENT AREA (LGA)



CASH RESPONSE BY STATE



The boundaries and names shown and the designations used on this map do not imply official endorsement or acceptance by the UN.