

In July 2022, the Food Security Sector assisted 1,618,462 individuals with food assistance (SO1) and 744,543 individuals for agriculture & livelihoods (SO2), of whom 57% (928,532 and 7% (53,491) received support through Cash Voucher Assistance (CVA) for SO1 and SO2 respectively. Twenty-five organizations, including national and international NGOs and UN agencies, used different transfer delivery mechanisms, such as cash in hand, mobile money transfers, paper vouchers, and electronic vouchers. Borno state hosts the highest caseload, approximately 87% of the CVA beneficiaries, compared to 11% and 2% in Yobe and Adamawa states, respectively.

## KEY FACTS & FIGURES ON CASH & VOUCHER ASSISTANCE



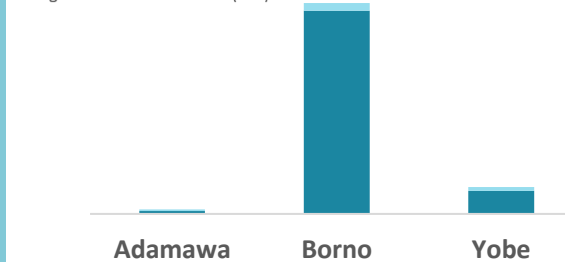
**928,532**  
Food Assistance



**53,491**  
Agriculture & Livelihood

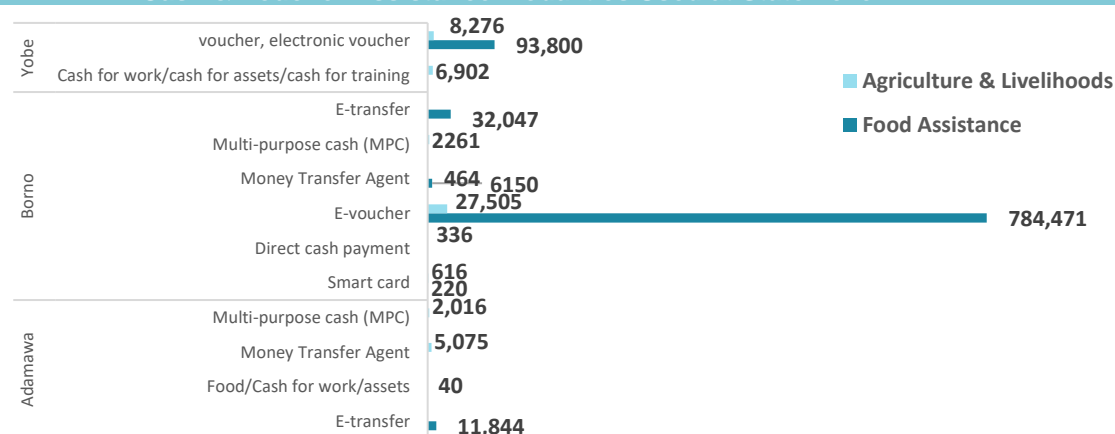
### Cash & Voucher Assistance at State Level

■ Food Assistance (SO1)  
■ Agriculture & Livelihoods (SO2)

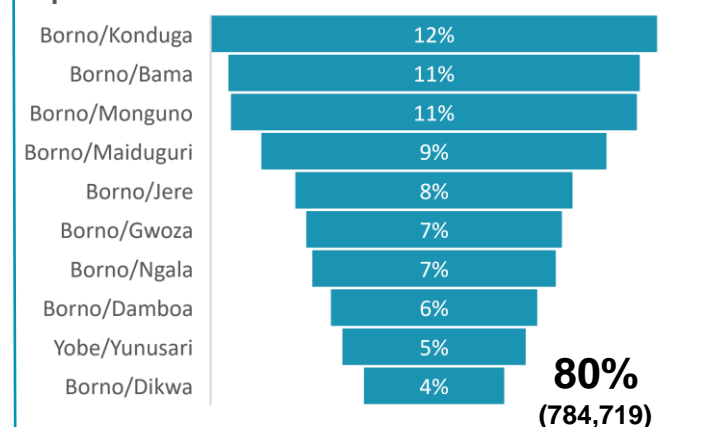


SO1	11,844	822,888	93,800
SO2	7,131	31,182	16,178

### Cash & Voucher Assistance Modalities Used at State Level



### Top 10 of the 24 LGAs with Cash Voucher Assistance



### MODALITY | PEOPLE ASSISTED

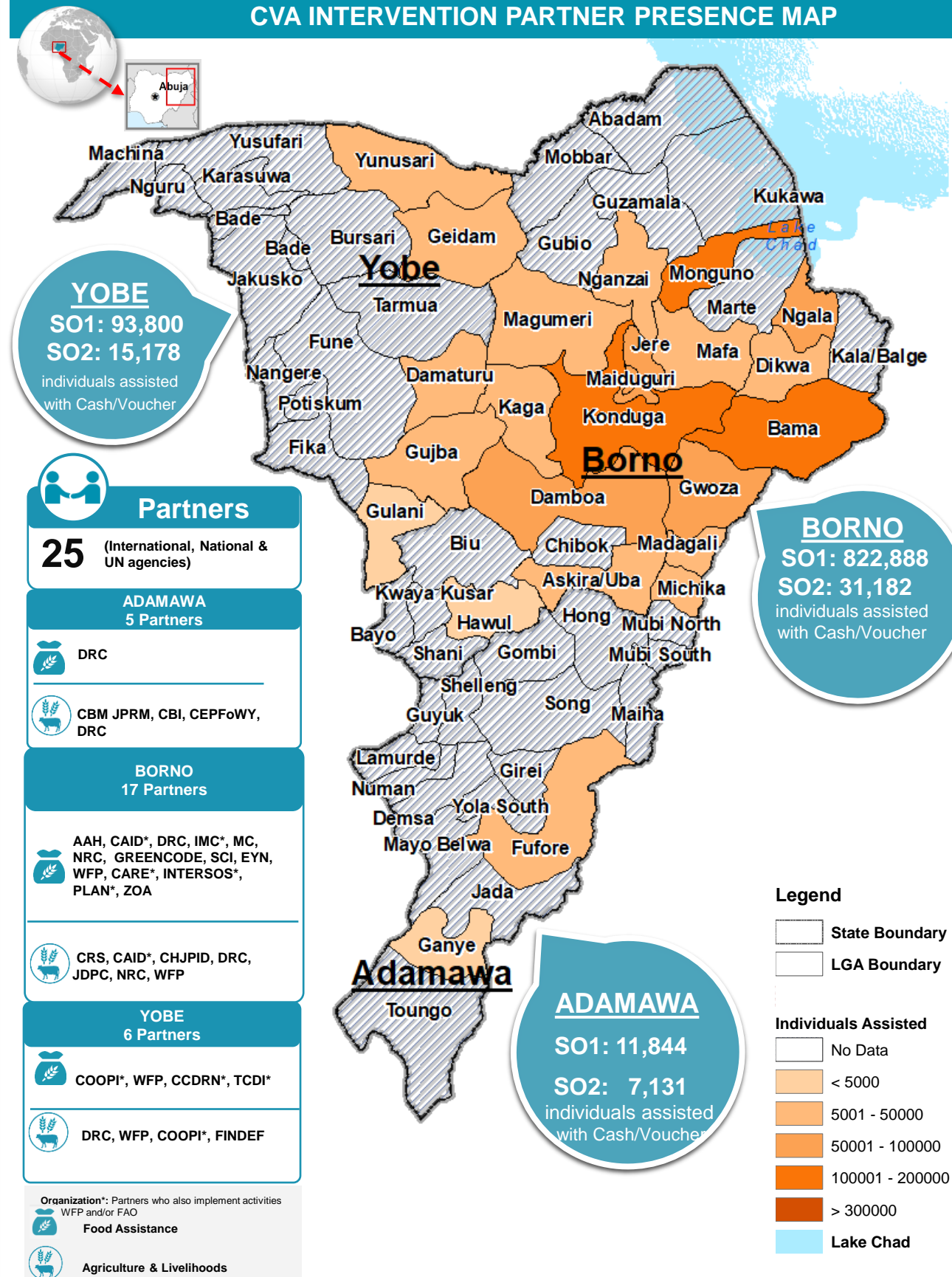
#### DELIVERY MECHANISM/People Assisted

Direct cash payment	336 (0.03%)
E-transfer	43,891 (4.47%)
E-voucher	914,052 (93.08%)
Food/Cash for work/assets	6,942 (0.71%)
Money Transfer Agent	11,689 (1.19%)
Multi-purpose cash (MPC)	4,277 (0.44%)
Smart Card	836 (0.09%)

#### CONDITIONALITY/People Assisted

Conditional	26,805 (3%)
Unconditional	955,218 (97%)

## CVA INTERVENTION PARTNER PRESENCE MAP



Sector's online dashboard:

<http://fscluster.org/nigeria> [Nigeria, North East Food Security Sector Dashboard](#)

Production date: 26 August 2022  
Data sources: FSS 5Ws data for July 2022/FSS Partners  
Contact: [info.nigeria@fscluster.org](mailto:info.nigeria@fscluster.org) | Nigeria Food Security Sector

**Disclaimer:** This dashboard captures information available at the moment of production based on partners' reporting. The boundaries and names shown, and the designations used on this map do not imply official endorsement or acceptance by the UN.