



In August 2020, the Food Security Sector assisted **3,357,352** unique individuals, of whom **53% (1,785,338)** received assistance through Cash Voucher Assistance (CVA). Thirty-three organizations, including national and international NGOs and UN agencies, applied various transfer delivery mechanisms, such as cash in hand, mobile money transfers, paper vouchers and electronic vouchers. Of those assisted with CVA, **57% (1,017,738)** were under SO1 (Food Assistance) while **43% (767,600)** under SO2 (Agriculture and Livelihoods). Borno state hosts the highest caseload, approximately 71% of the CVA beneficiaries, compared to 27% and 2% in Yobe and Adamawa states, respectively.

## KEY FACTS & FIGURES ON CASH & VOUCHER ASSISTANCE – as of August 2020



**1,785,338**

Total number of people assisted through Cash/Voucher as of August 2020



**1,017,738**

Food Assistance



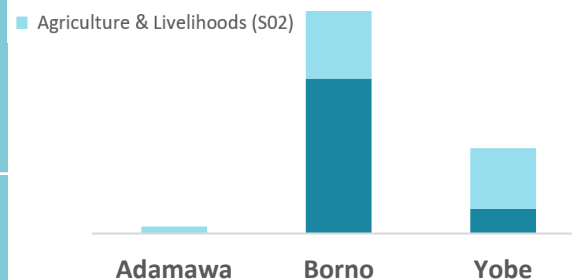
**767,600**

Agriculture & Livelihood

### Cash & Voucher Assistance at State Level

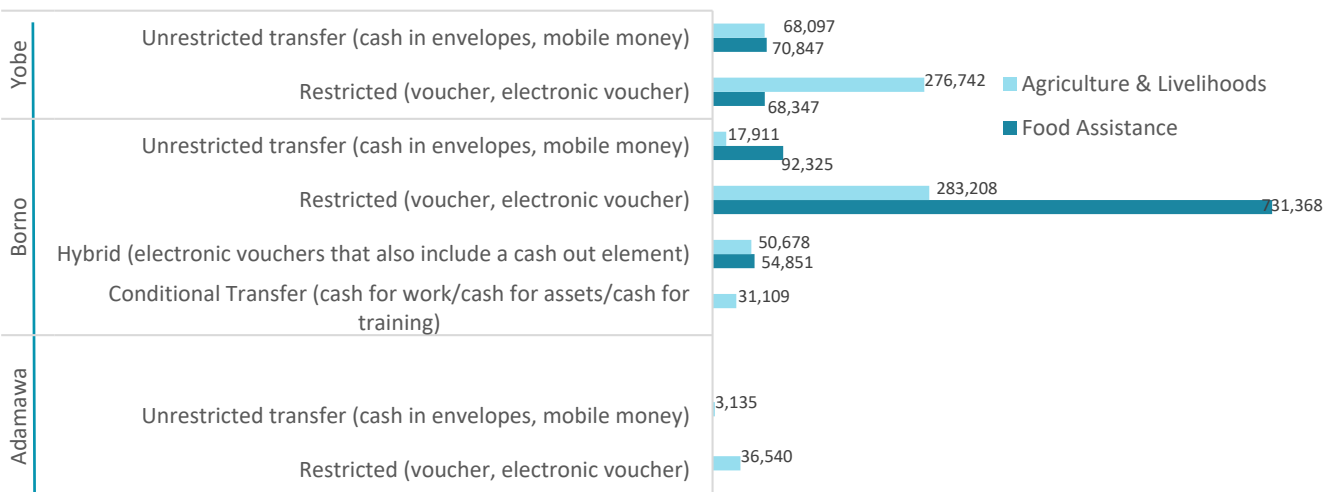
■ Food Assistance (SO1)

■ Agriculture & Livelihoods (SO2)

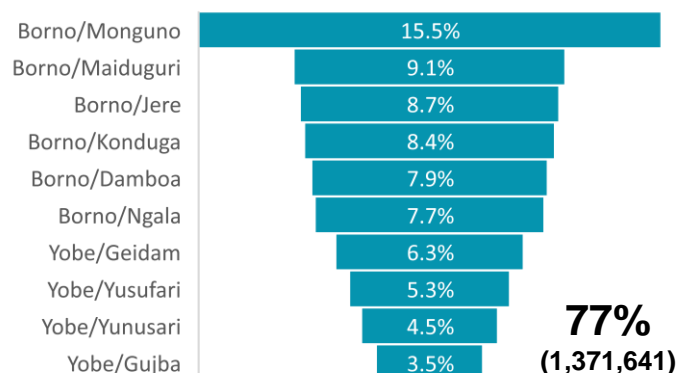


	Adamawa	Borno	Yobe
SO1	0	878,544	139,194
SO2	39,855	382,906	344,839

### Cash & Voucher Assistance Modalities Used at State Level



### Top 10 of the 30 LGAs with CVA in August 2020



**77%**  
**(1,371,641)**

### MODALITY | PEOPLE ASSISTED

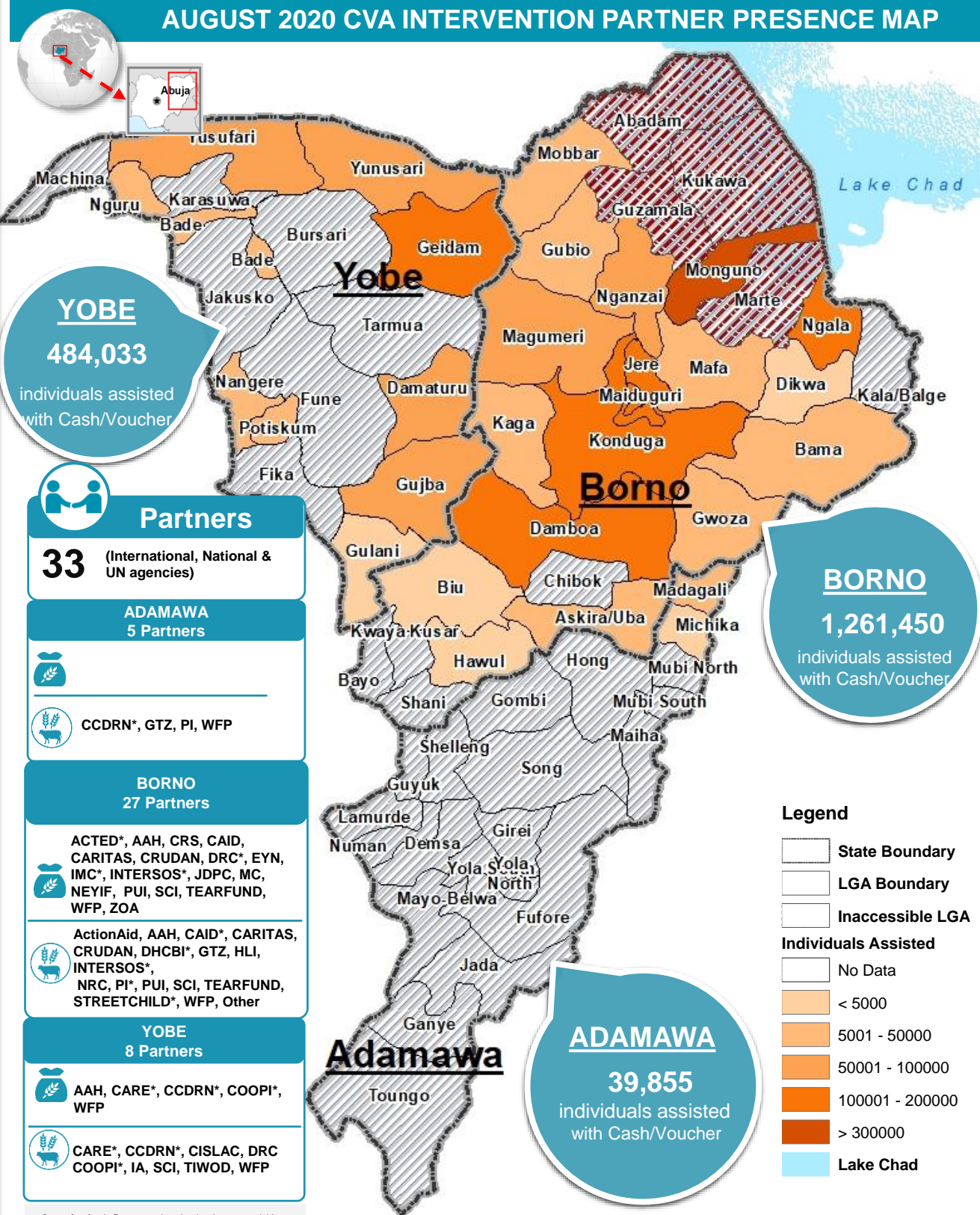
#### RESTRICTION/People Assisted

Restricted	1,385,943 (78%)
Unrestricted	293,866 (16%)
Hybrid	105,529 (6%)

#### CONDITIONALITY/People Assisted

Conditional	710,534 (40%)
Unconditional	1,074,804 (60%)

## AUGUST 2020 CVA INTERVENTION PARTNER PRESENCE MAP



Sector's online dashboard:

<http://fscluster.org/nigeria> <https://public.tableau.com/profile/ng.food.security.sector#!/vizhome/shared/S4CCXRC39>

Production date: 31 September 2020

Data sources: FSS 5Ws data for August 2020/FSS Partners

Contact: [info.nigeria@fscluster.org](mailto:info.nigeria@fscluster.org) | Nigeria Food Security Sector

**Disclaimer:** This dashboard captures information available at the moment of production based on partners' reporting. The boundaries and names shown and the designations used on this map do not imply official endorsement or acceptance by the UN.