



World Food
Programme

SAVING
LIVES
CHANGING
LIVES

YEMEN FOOD SECURITY UPDATE

September 2023

Highlights



Despite the 200-million-dollar deposit announced in CBY-Aden by early August 2023, the Yemeni riyal in IRG-controlled areas continued to depreciate against the USD by around four percent compared to the preceding month, and by 23 percent compared to year before, reaching YER 1,453/USD at the end of August. On the other hand, the local currency exchange rate remained unchanged at YER 526/USD in areas under Sana'a-based authorities compared to a month earlier, while it appreciated by six percent year-on-year. [Click Here](#)



In IRG-controlled areas, pump prices for petrol and diesel increased by two and seven percent respectively compared to the previous month, while being unchanged in areas under Sana'a-based authorities. The monthly increase in fuel prices in the south was primarily attributed to the ongoing currency depreciation. However, fuel prices exhibited an annual decline across the country, particularly in the north. [Click Here](#)



In August, the global FAO Food Price Index slightly decreased by two percent from the previous month, while registering a decline of 12 percent compared to a year before. All sub-indexes witnessed an annual decline except for sugar, which rose by 34 percent on year-on-year basis. This increase is largely driven by the growing fears about the impact of the El Niño weather phenomenon on global production prospects. In Yemen, sugar prices also saw an annual increase by two percent in the north and by 32 percent in the south. [Click Here](#)



The cost of the minimum food basket (MFB) remained unchanged across the country compared to the preceding month, while it witnessed an annual decline by five percent in IRG-controlled area and by 21 percent in areas under Sana'a-based authorities. The notable decline in the north was mainly driven by the annual decrease in the prices of vegetable oil and wheat flour, down by 34 and 21 percent, respectively. Nonetheless, local food prices continued to be reported as a main impediment for adequate diets by 18 percent of the surveyed households in the south and seven percent in the north. [Click Here](#)



For more details, you can visit:

[WFP Yemen food security and market monitoring dashboard](#)



Fuel supply has significantly improved via the Red Sea ports since the activation of the truce. During January-August 2023, the total volume of fuel imported through the northern ports of Al-Hodeidah and As-Salif was 44 percent higher than the level recorded during the same period in 2022. [Click Here](#)



During January-August 2023, the overall volume of food imports has increased by three percent via Red Sea ports and by 21 percent through the southern ports of Aden and Mukalla, when contrasted with the corresponding period in 2022. [Click Here](#)



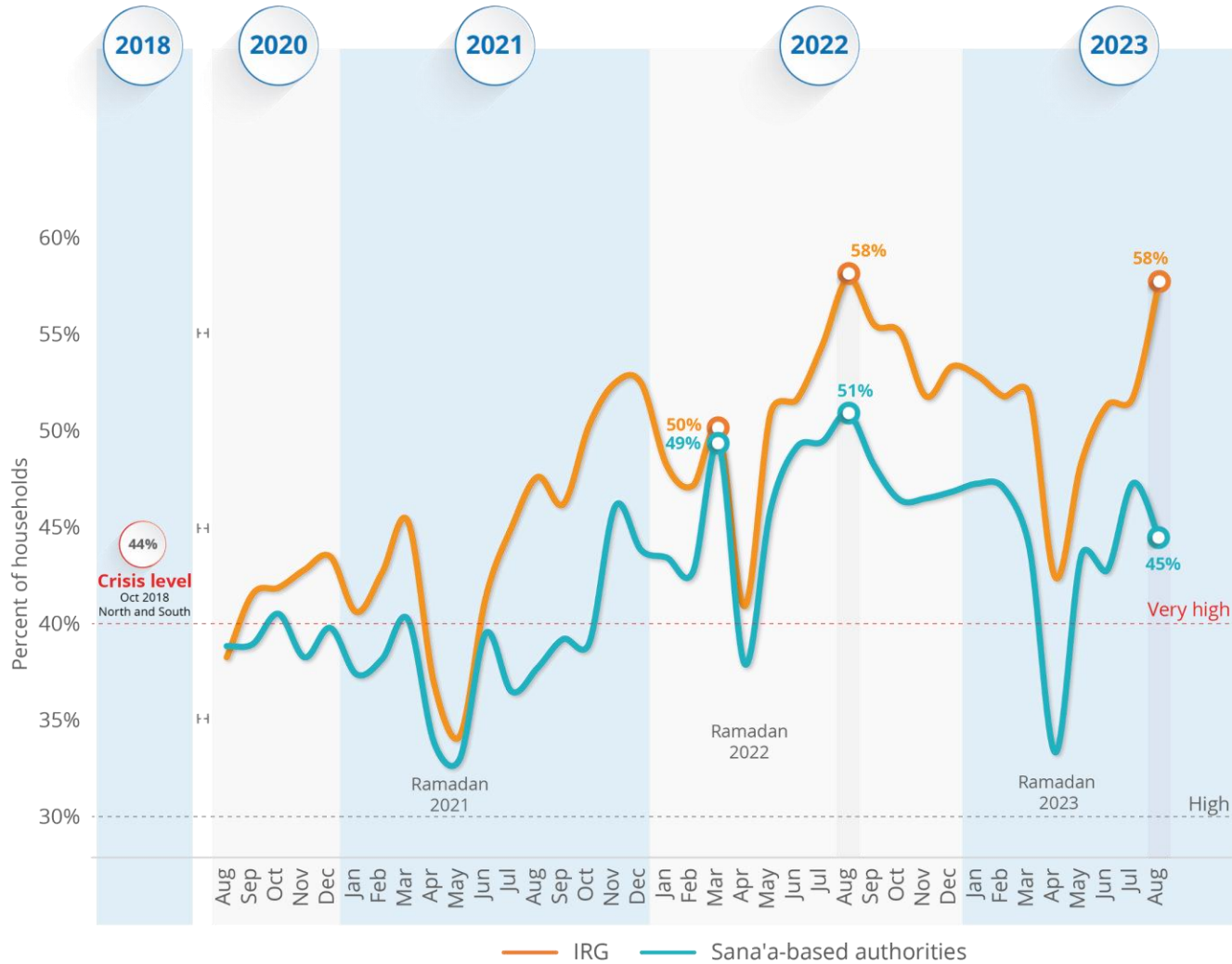
WFP aims to reach 13 million people with each food distribution cycle until the end of August, but funding constraints have forced it to reduce rations to 41 percent of the standard food basket per cycle. The WFP's needs-based plan for October 2023 to March 2024 is only 15 percent funded, and the ongoing funding crisis could force WFP to reduce even further. [Click Here](#)



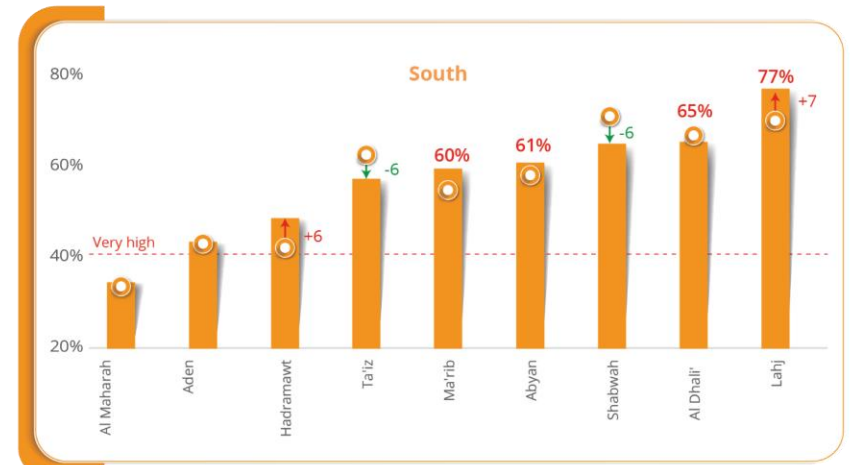
In August 2023, around 58 percent of the surveyed households in IRG-controlled areas were unable to access adequate diet, representing an increase by six percentage points from the preceding month, while remaining at the same level of August 2022. On the other hand, the prevalence of inadequate food consumption in areas under Sana'a-based authorities saw a decrease by two percentage points from a month earlier and by six percentage points year-on-year, reaching 45 percent in August 2023. Nationally, this trend is expected to remain elevated at critical levels until the beginning of Q4-2023. [Click Here](#)



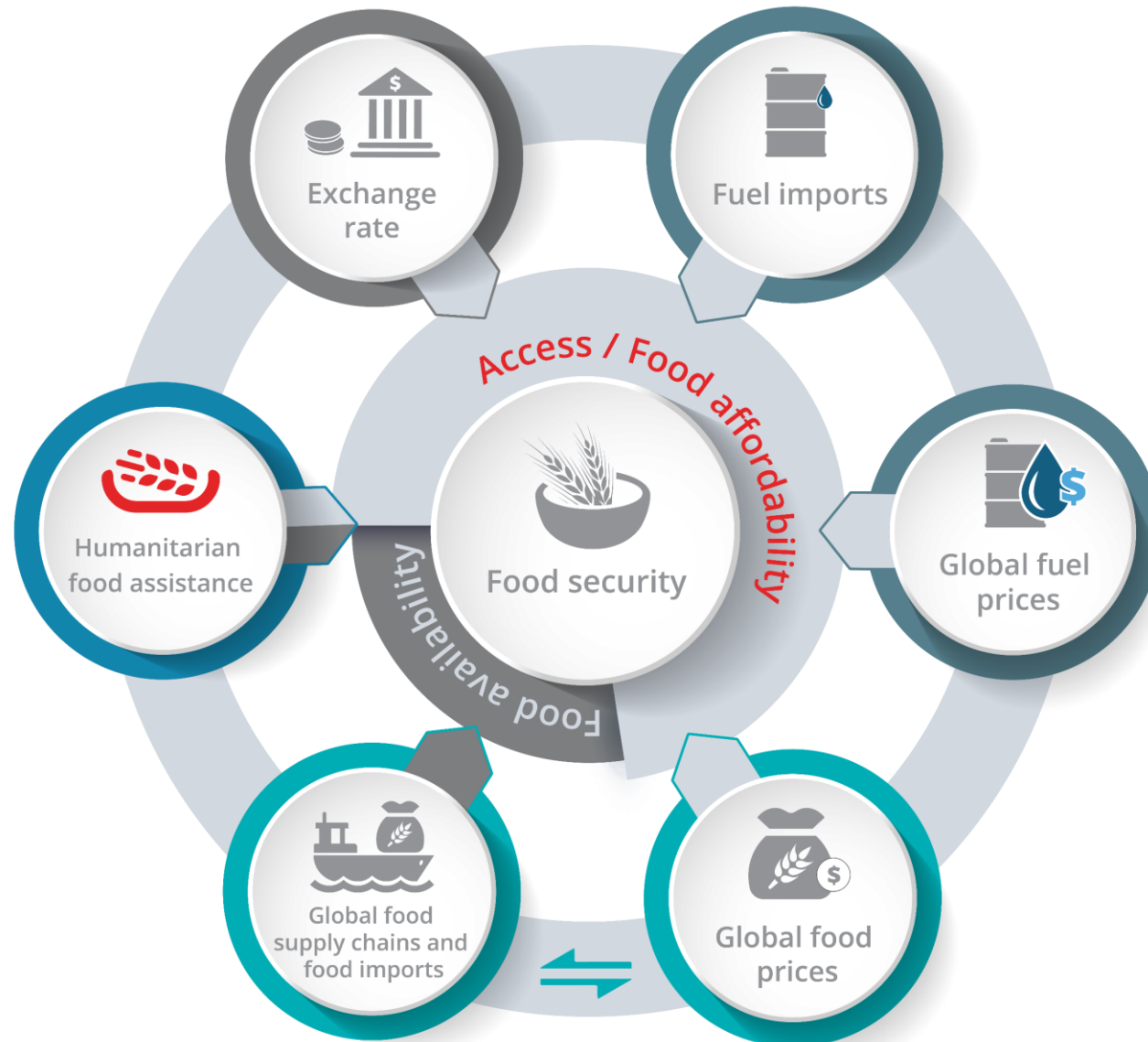
Food security outcomes (inadequate food consumption by governorate)



Source: WFP monitoring data

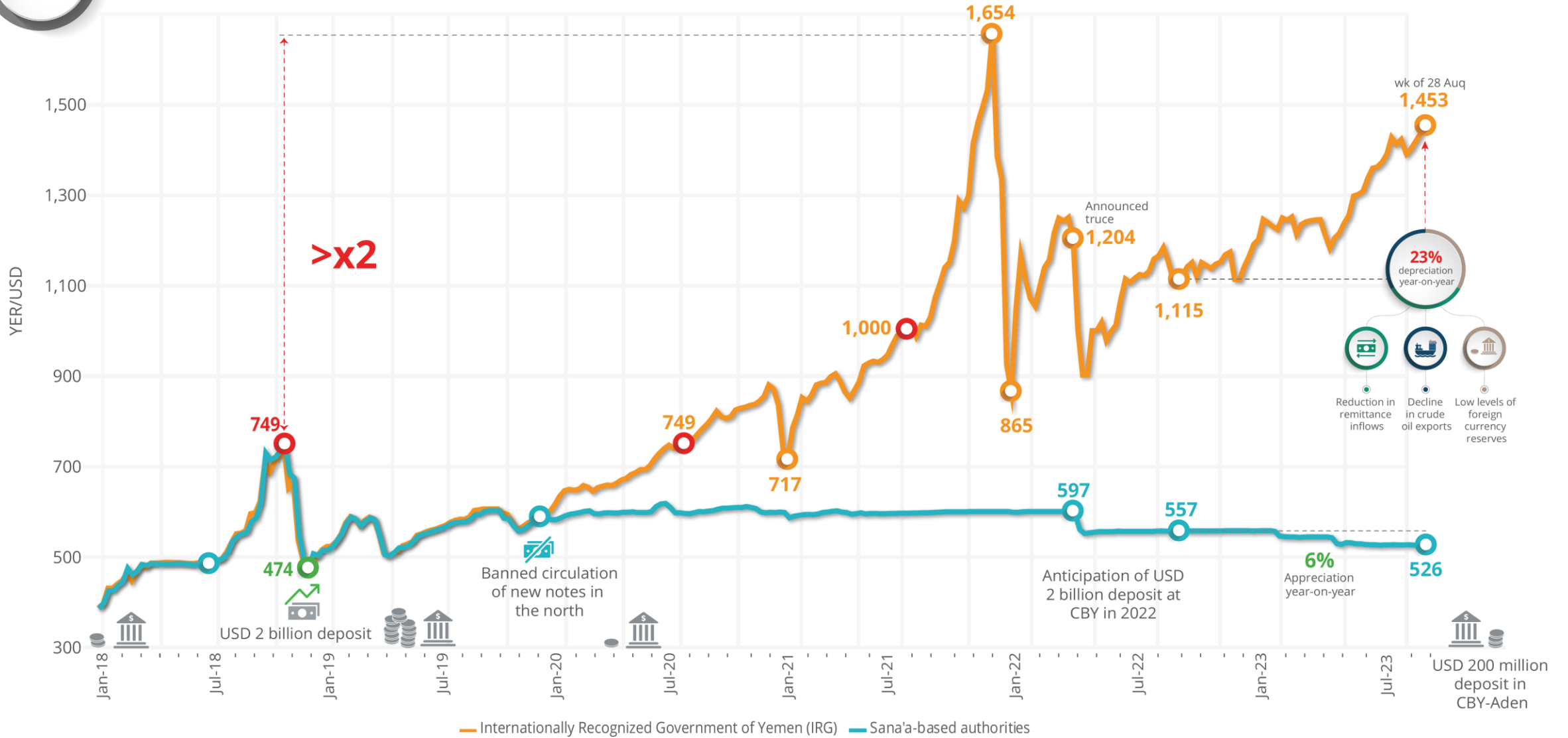


Drivers of food insecurity, beyond conflict





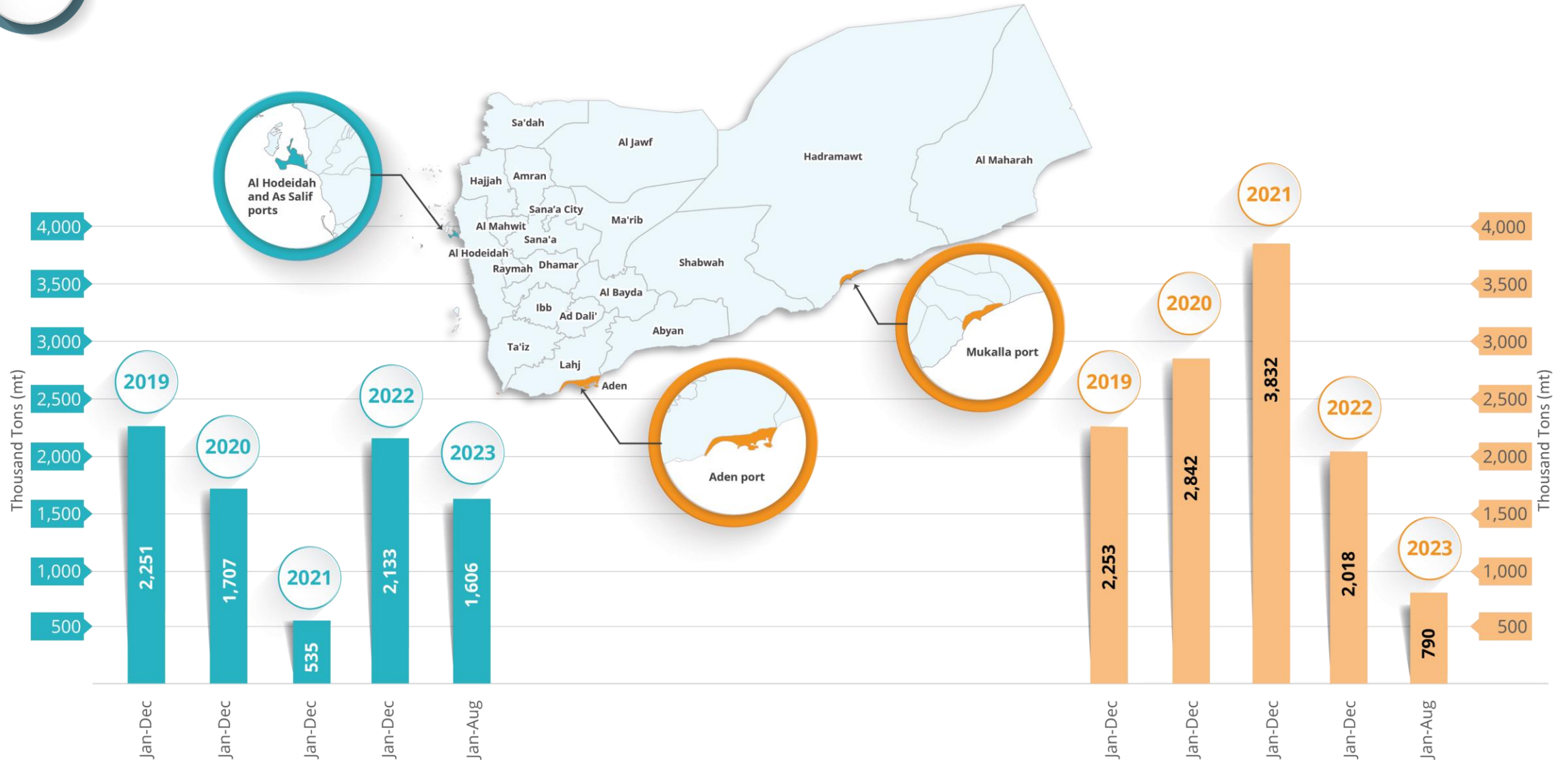
Exchange rate



Source: weekly WFP monitoring data (average weekly exchange rates)



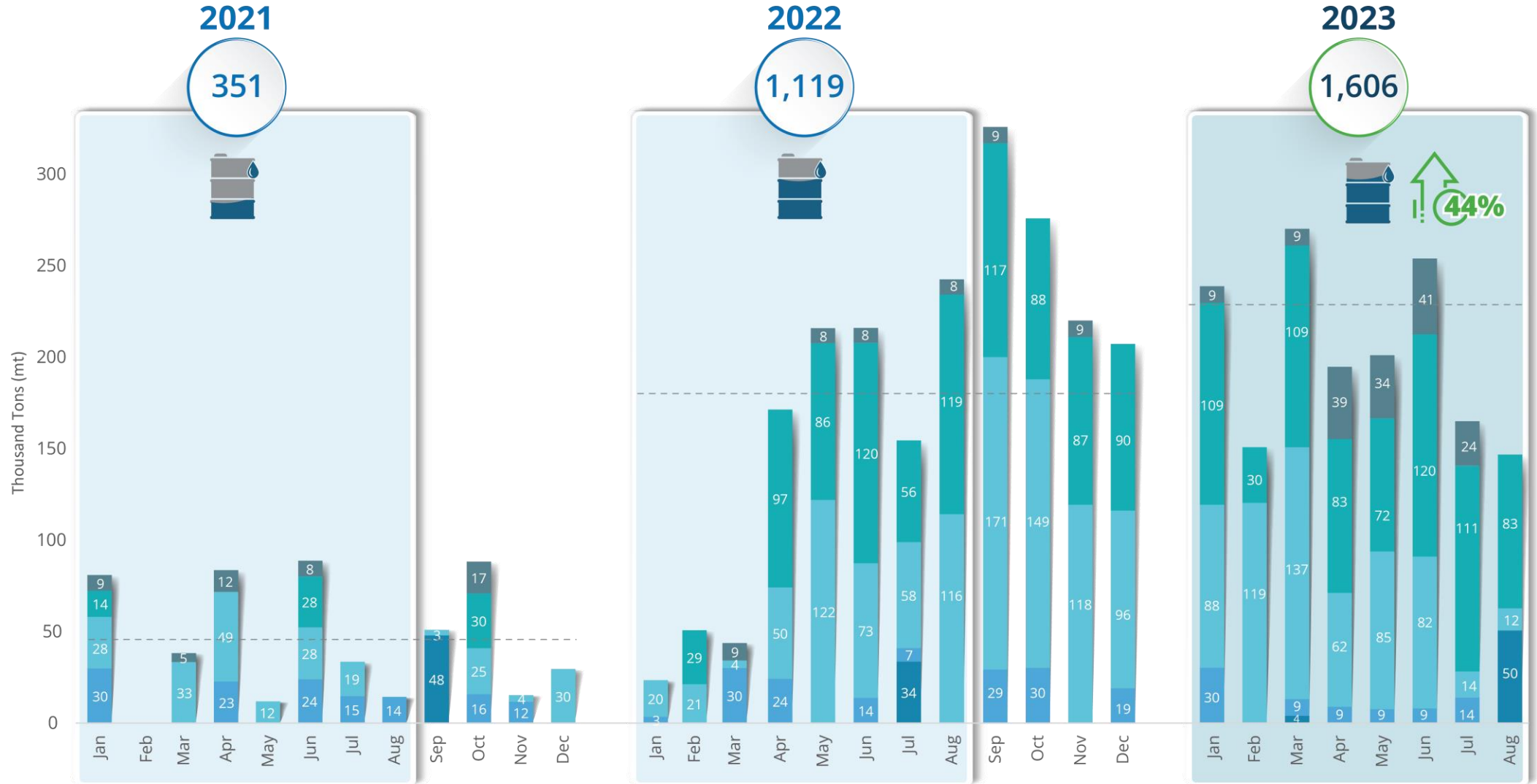
Fuel imports through Al Hodeidah and As Salif, Mukalla and Aden ports



Source: UNVIM and shipment data from Wilhelmssen



Fuel imports through Al Hodeidah and As Salif ports

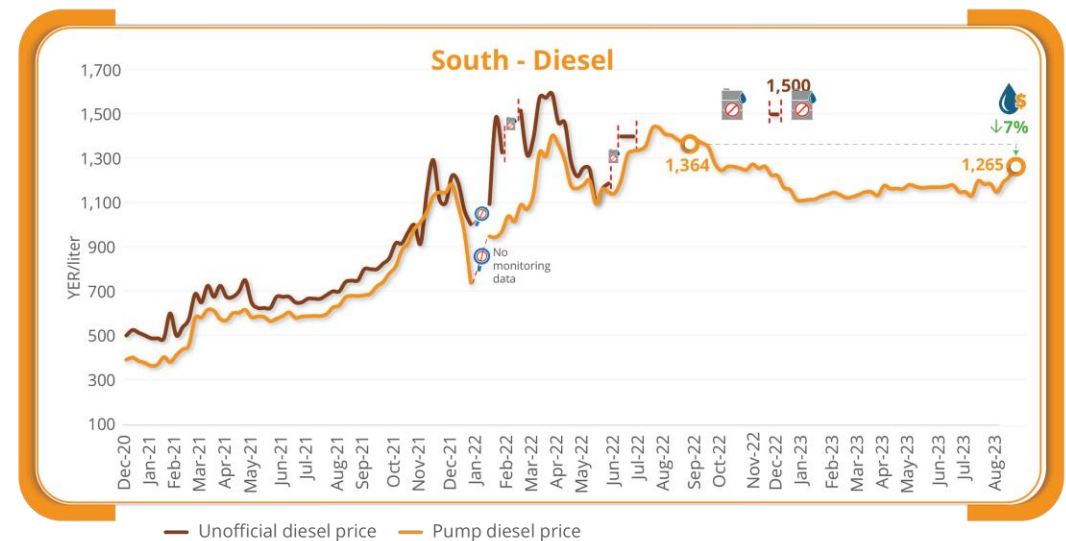
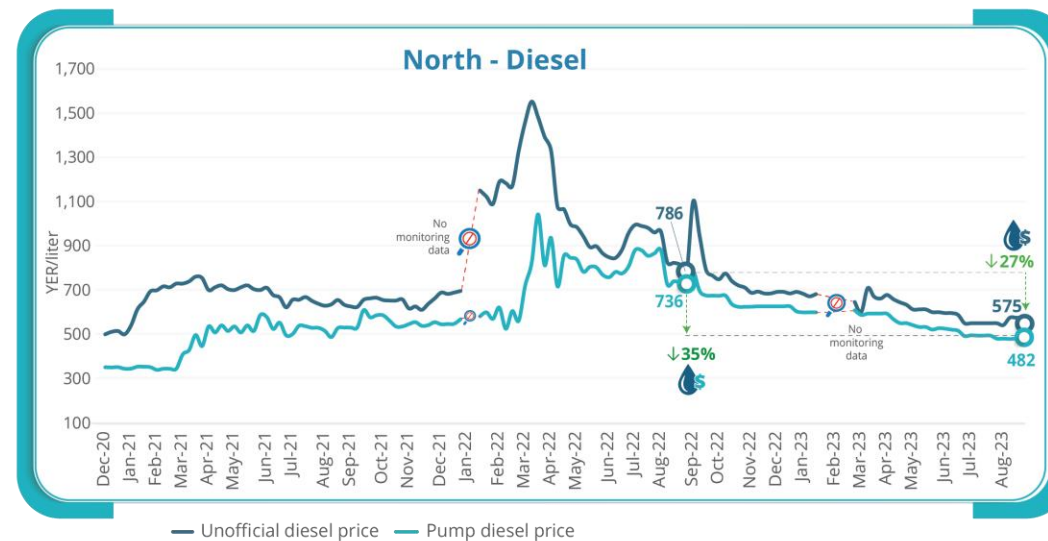
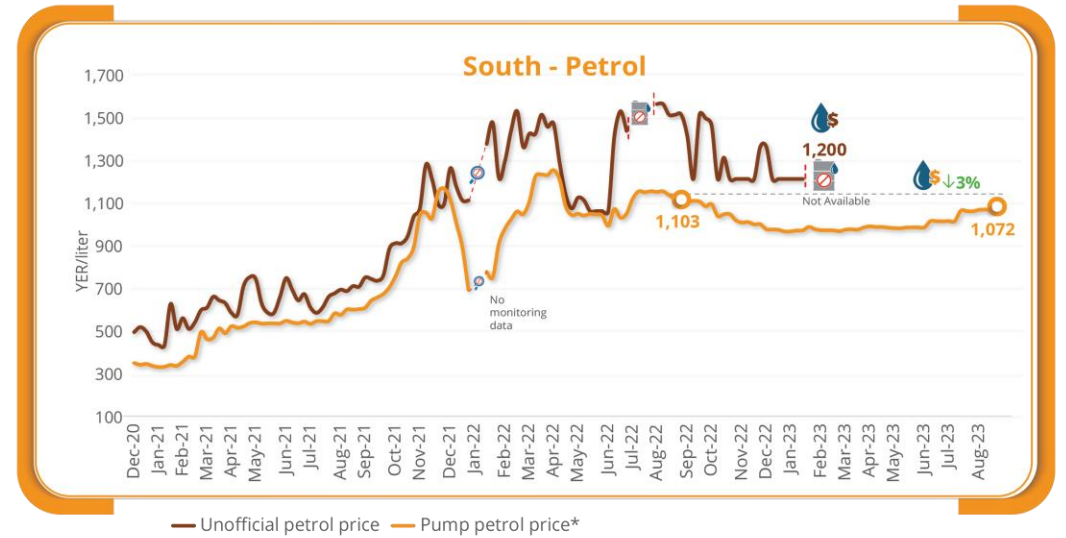
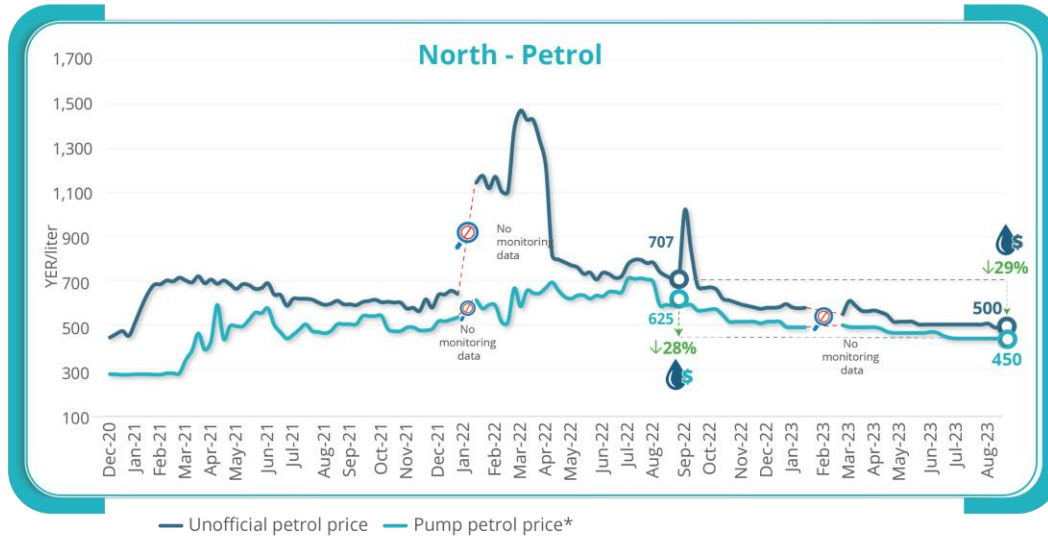


■ Kerosene
 ■ LPG
 ■ Gasoline
 ■ Gas Oil
 ■ Fuel Oil
 ■ Coal
 ■ Fuel discharged
 ○ Total for Jan-Aug (Thousand Tons)
 ---- Average monthly imports per year (Thousand Tons)

Commercial imports through Al Hodeidah and As Salif ports
 Source: UNVIM data
 The figures of May-Aug 2023 are based on the data from Yemen Red Sea Ports Corporation
 Data of fuel imports through Red Sea ports during July 2023 was revised and updated by the shipping agents



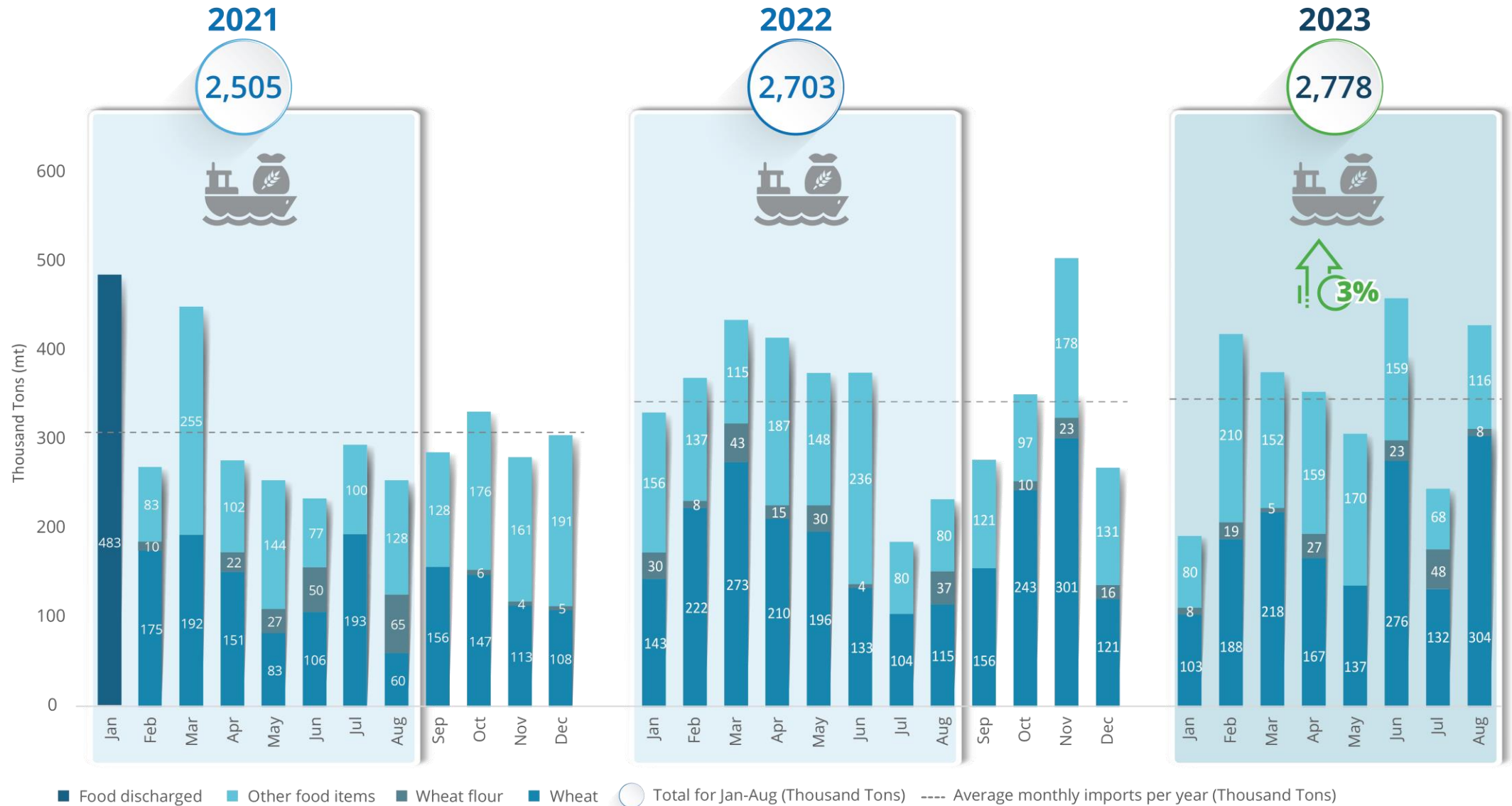
Fuel prices



Pump price: The average price of the official and commercial petrol/diesel sold through the gas stations



Food imports through Al Hodeidah and As Salif ports



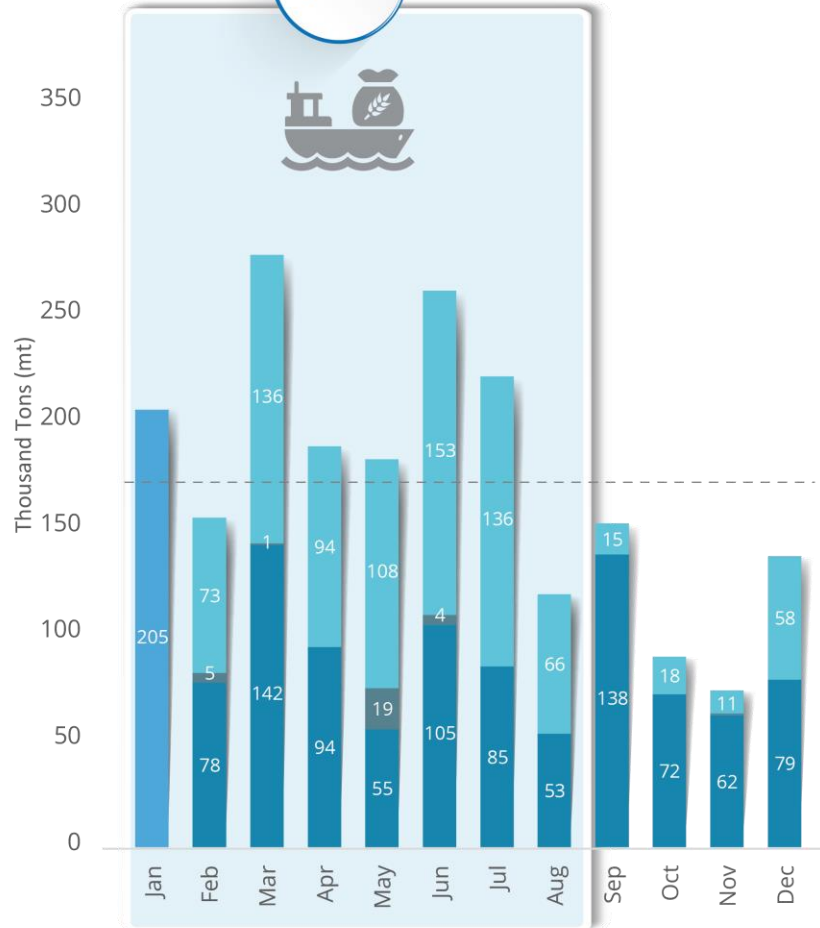
Source: UNVIM data
 The figures of May-Aug 2023 are based on the data from Yemen Red Sea Ports Corporation
 Data of food imports through Red Sea ports during July 2023 was revised and updated by the shipping agents



Food imports through Aden and Mukalla Ports

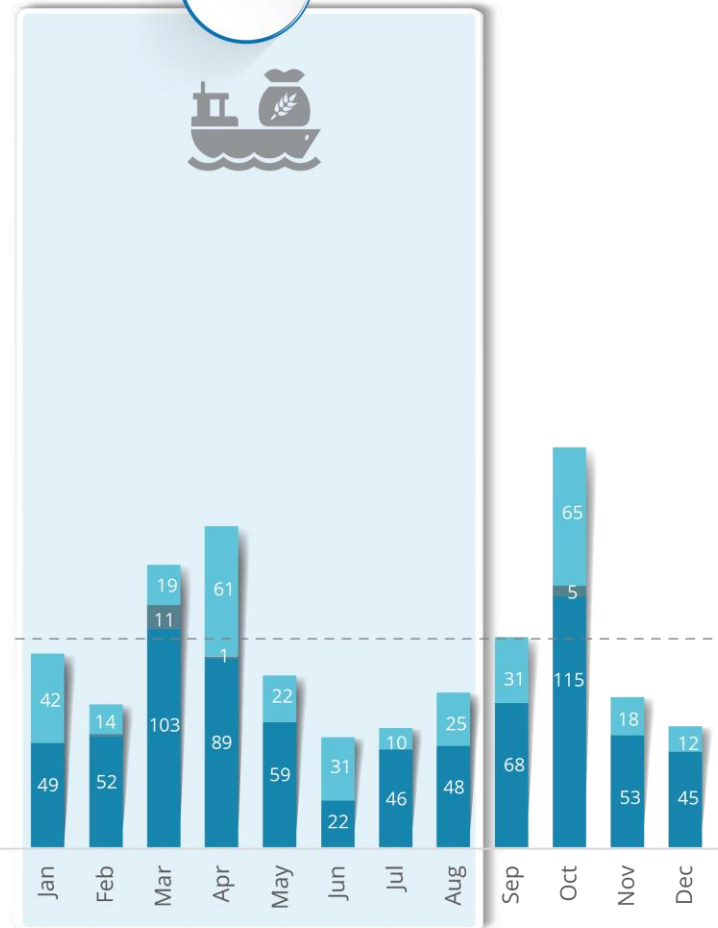
2021

1,612



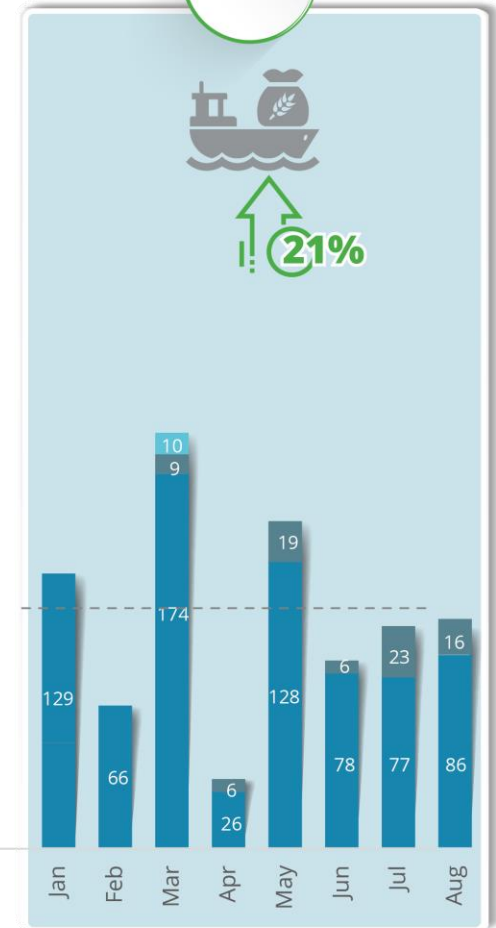
2022

704



2023

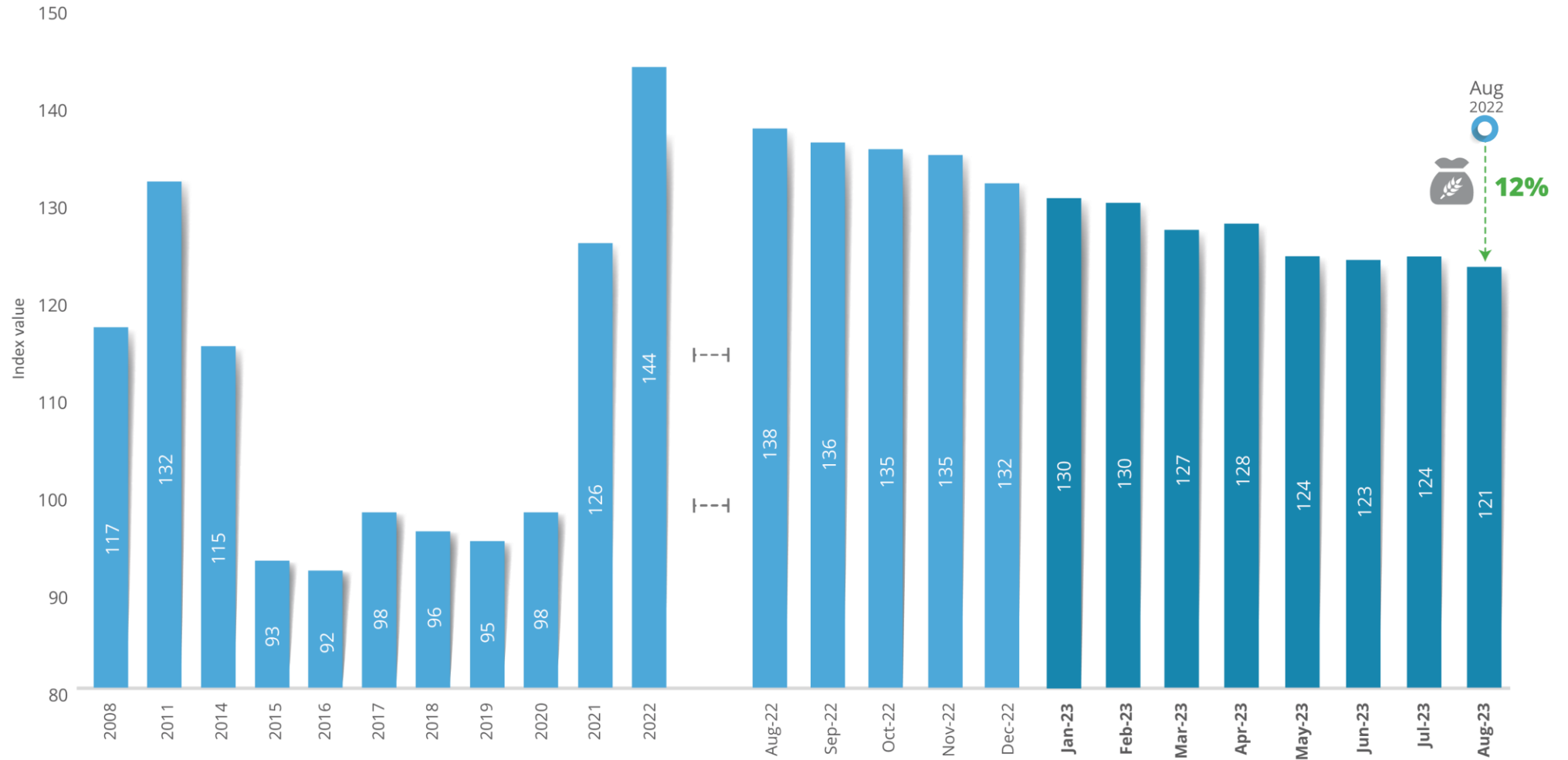
853



■ Food discharged
 ■ Other food items
 ■ Wheat flour
 ■ Wheat
 Total for Jan-Aug (Thousand Tons)
 ---- Average monthly imports per year (Thousand Tons)



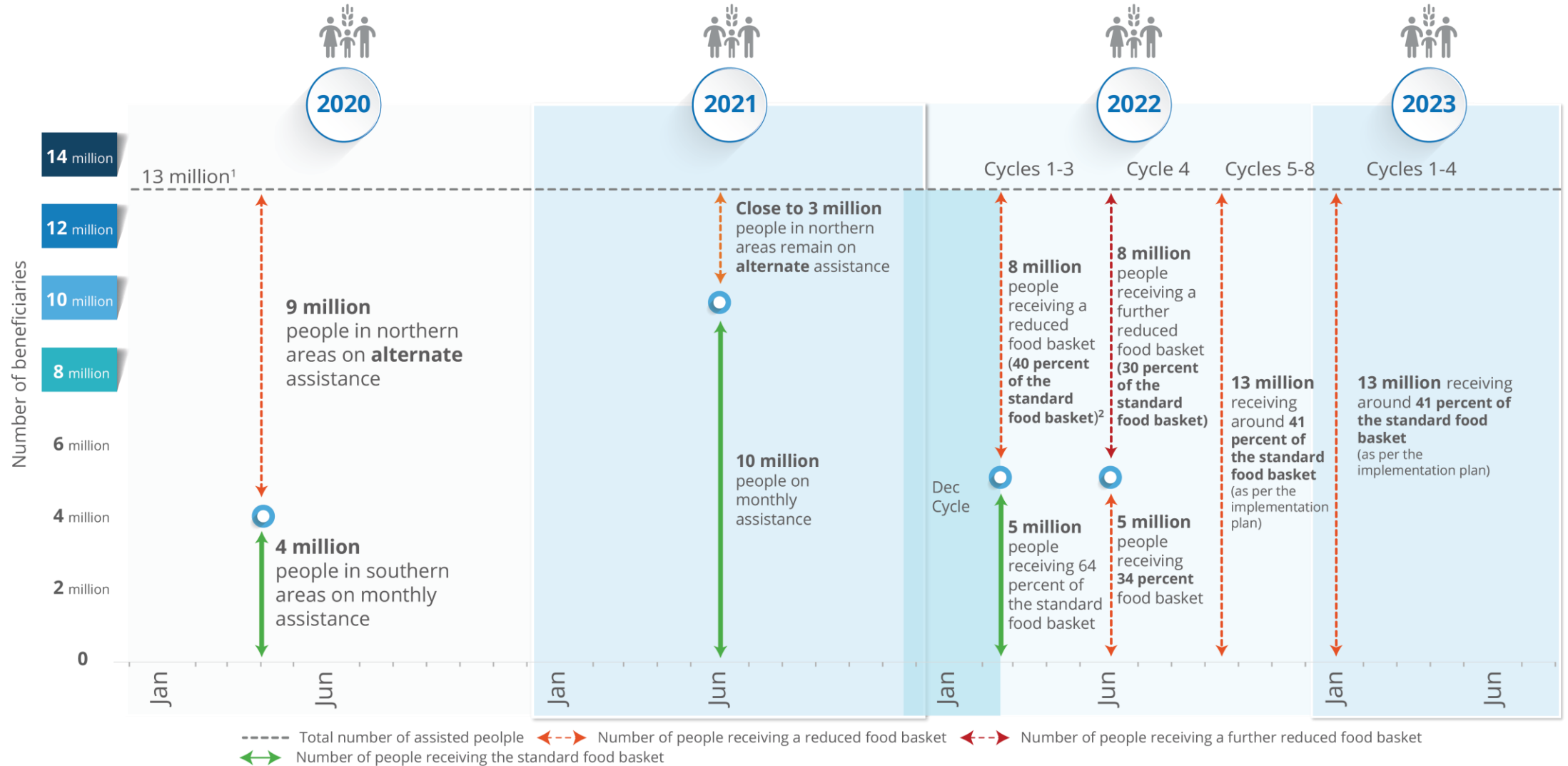
Global food prices



Source: FAO global food price index (FFPI)
The decline of the global FFPI during Aug 2022 - Aug 2023 was mainly driven by the decrease in the subindexes for oils, dairy and cereals by 23, 12 and 14 percent respectively



Humanitarian food assistance*



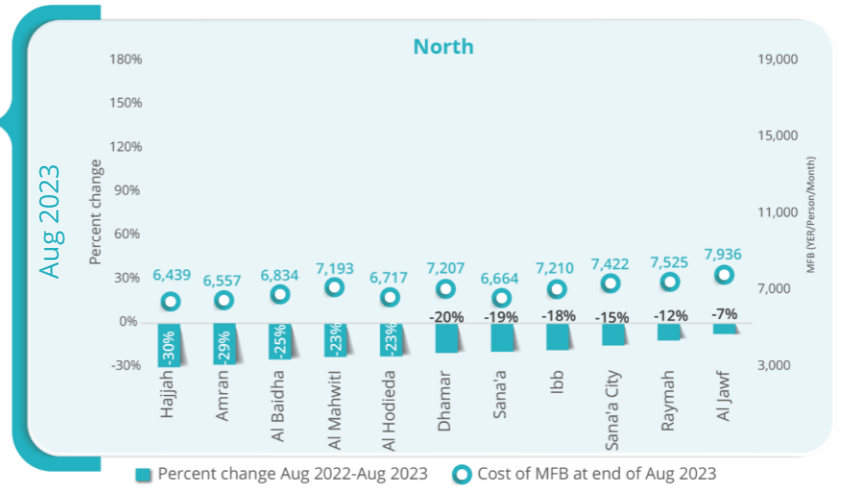
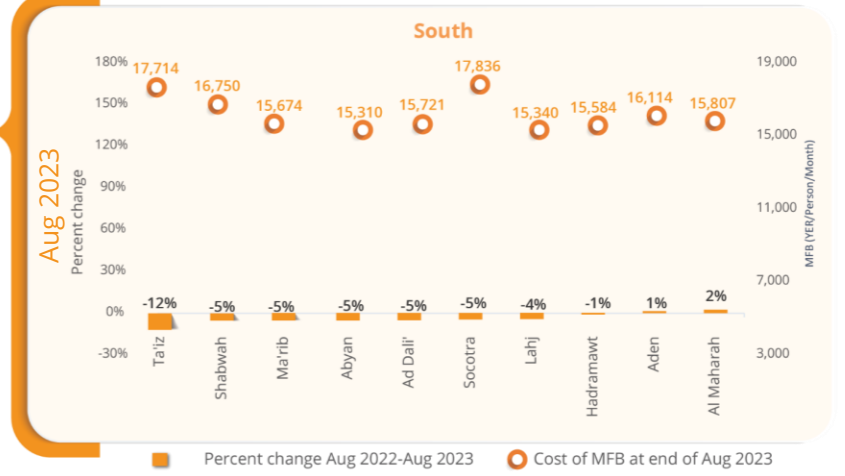
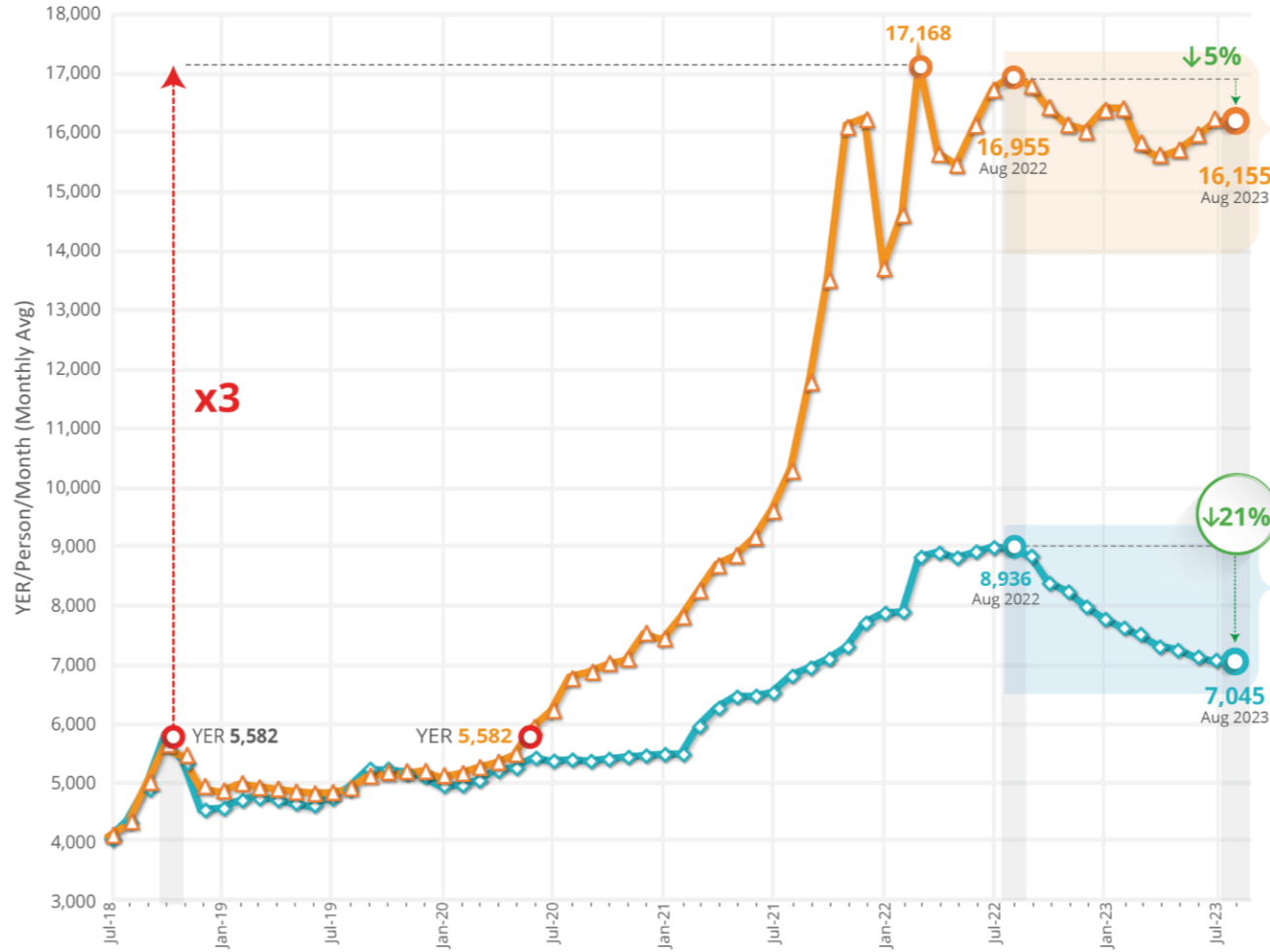
*WFP food assistance, all figures are rounded

¹ The figures reflect the implementation plan

² The standard full a is equivalent to 1,745 Kcal per person per day for a period of 30 days. Since 2022, food assistance is provided on a cycle basis (45 days) rather than monthly basis.



Average cost of minimum food basket (food affordability)



Source: Weekly WFP monitoring data
 The minimum food basket includes 10.71 kg wheat flour, 1.43 kg red beans, 1.14 L vegetable oil, 0.36 kg sugar and 0.14 kg salt per person per month
 Prices data for Sa'dah is not available

© WFP 2023, 3 Oct 2023.

Contact information:

Richard Ragan, WFP Country Director, wfp.sanaa@wfp.org

Riham Abuismail, Head of Research Assessment and Monitoring (RAM), riham.abuismail@wfp.org

Fawad Raza, Head of VAM, RAM Unit, fawad.raza@wfp.org

Abdelrahman Hamza, Food security analyst, RAM Unit, abdelrahman.hamza@wfp.org

Design/layout: Abdullah Alharazi, OIM Unit, abdullah.alharazi@wfp.org