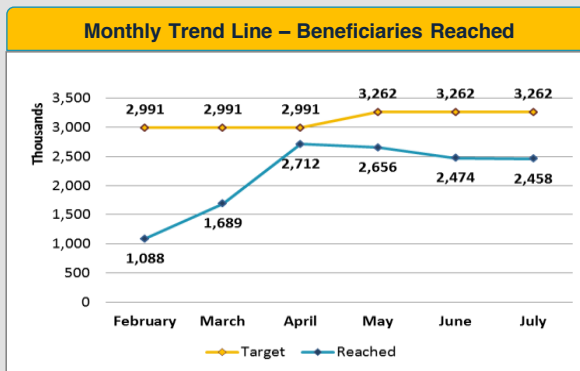
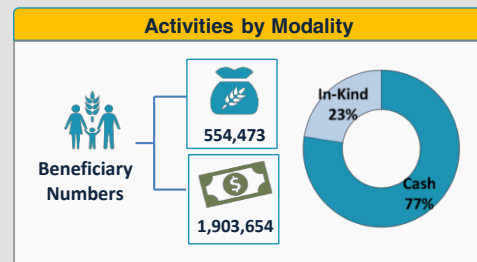
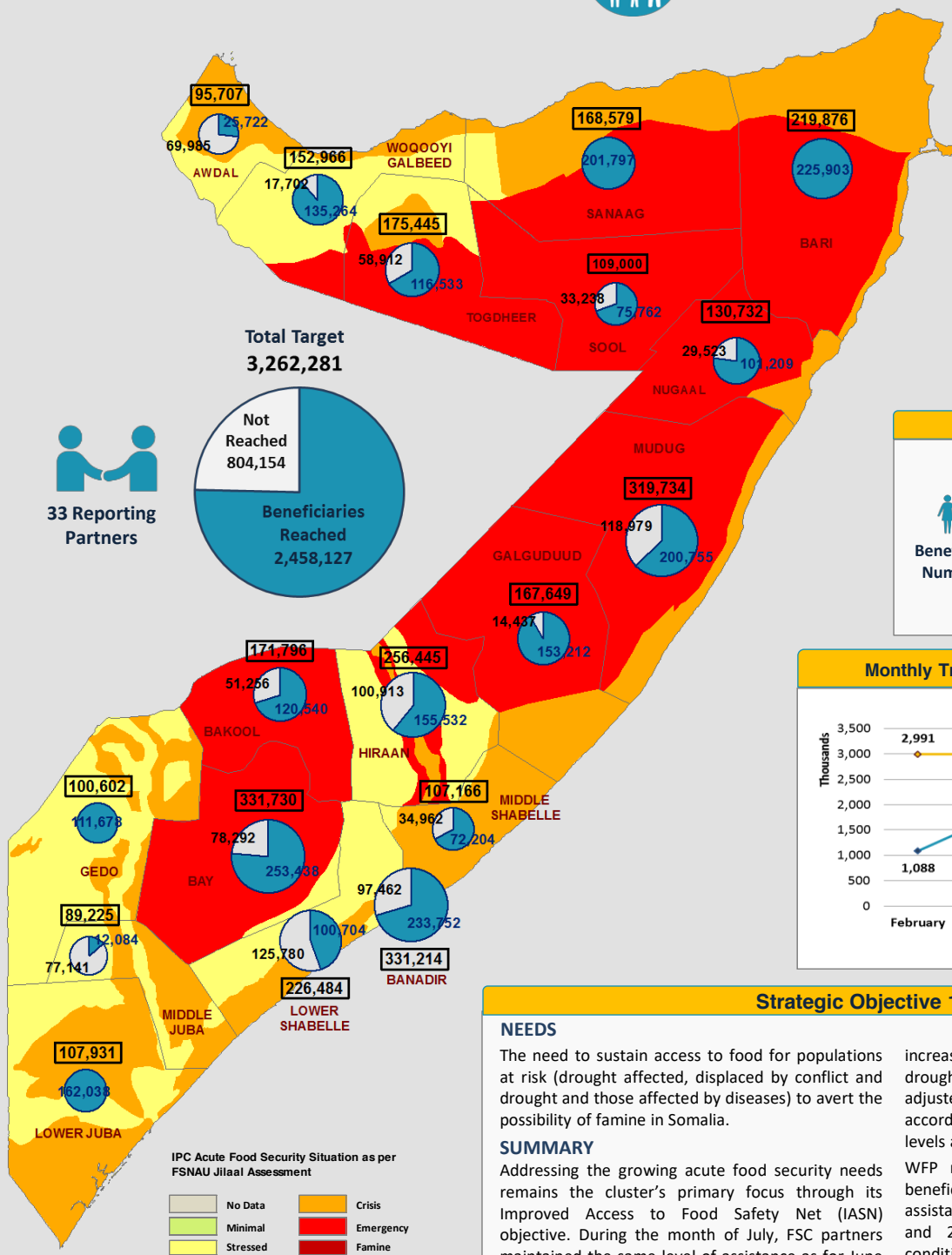




Reaching Beneficiaries

Progress against Targets



**Strategic Objective 1 Update**

**NEEDS**

The need to sustain access to food for populations at risk (drought affected, displaced by conflict and drought and those affected by diseases) to avert the possibility of famine in Somalia.

**SUMMARY**

Addressing the growing acute food security needs remains the cluster's primary focus through its Improved Access to Food Safety Net (IASN) objective. During the month of July, FSC partners maintained the same level of assistance as for June (2.5 million people) with increases in previously underserved areas with growing food insecurity including those with reported AWD cases including Galgaduud, Lower and Middle Shabelle, Sanaag, Togdheer and Woqooyi Galbeed. Modest increases were reported in Middle Juba (14% of the target) during this period.

The assistance has been through Unconditional transfers (Food Assistance and cash plus) 77% and conditional transfers (Cash /Food for work) 23% ensuring immediate access to food for populations at risk. Conditional cash transfers have also enabled households to restore community assets and

increase capacity to cope with the impact of the drought. Throughout the period, partners have adjusted levels and modalities of assistance according to the severity of the food insecurity levels and the local context to meet the needs.

WFP reached 63 % (1.55 million) of the total beneficiaries assisted through unconditional assistance, with FAO reaching 8% of the caseload and 29 % supported by other partners. On conditional assistance, FAO, WFP, and CARE-Somalia contributed to 57%, 17% and 16 % of the total beneficiaries assisted in July 2017 respectively.

**GAPS**

Significant gaps in funding mean that the level of assistance in addressing acute food insecurity needs may not be sustainable over time with the threat to reverse gains in famine prevention.

Limited humanitarian access in conflict affected areas has had an adverse impact on the response particularly in Middle Juba, Lower Shabelle, Bakool (Tieglo) and Bay (Qasax Dheer, Buur Hakaba contributing to the growing displacements in Baidoa and Mogadishu in search of life-saving assistance.



Registration for cash-based assistance from WFP via a smartcard.