

**Sector Objective 1: Improve the food security status of assessed food insecure people by emergency humanitarian life-saving and regular life sustaining food assistance**

**PEOPLE IN NEED**

**Food & Livelihood Assistance**

**9 Million**

Humanitarian Needs Overview (HNO) - 2017

September 2015 8.7 Million  
 June 2016 9.4 Million  
 September 2016 9.0 Million

**LIFE SUSTAINING AND LIFE SAVING FOOD ASSISTANCE (SO1) TARGET**

**7 Million**  
 Food Basket, Cash & Voucher - life sustaining

**2 Million**  
 Emergency Response

**OVERALL TARGET SO1**

**9 Million**

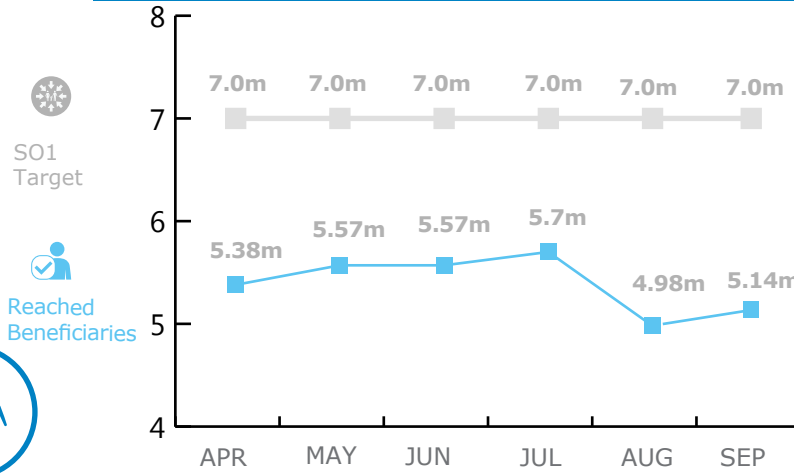
**SEP 2017 PLAN RESPONSE**

Food Basket, Cash & Voucher  
**5.14 Million**  
 (73%) of SO1 Target  
 Humanitarian Response Plan (HRP) - 2017

**BENEFICIARIES WHOLE OF SYRIA**

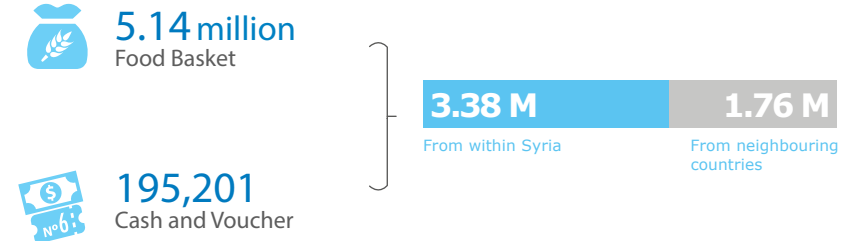


**SO1 RESPONSE**

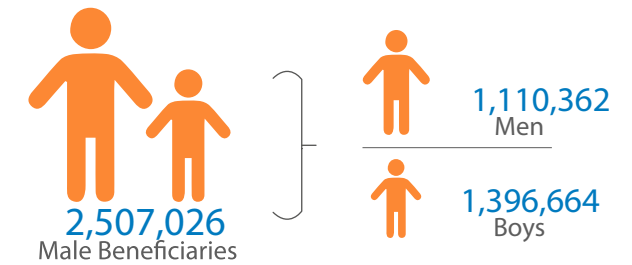
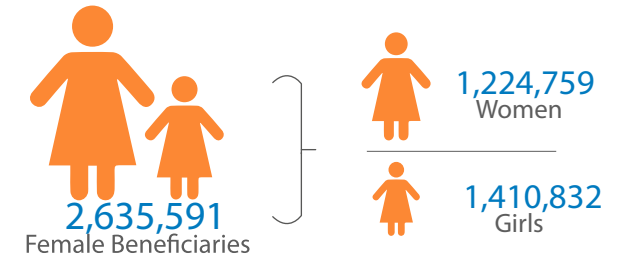


**BENEFICIARIES REACHED BY MODALITIES AND ORIGIN**

**SEPTEMBER 2017 PLAN CYCLE**



Additionally, Bread - Flour and Ready to Eat Rations were also Provided



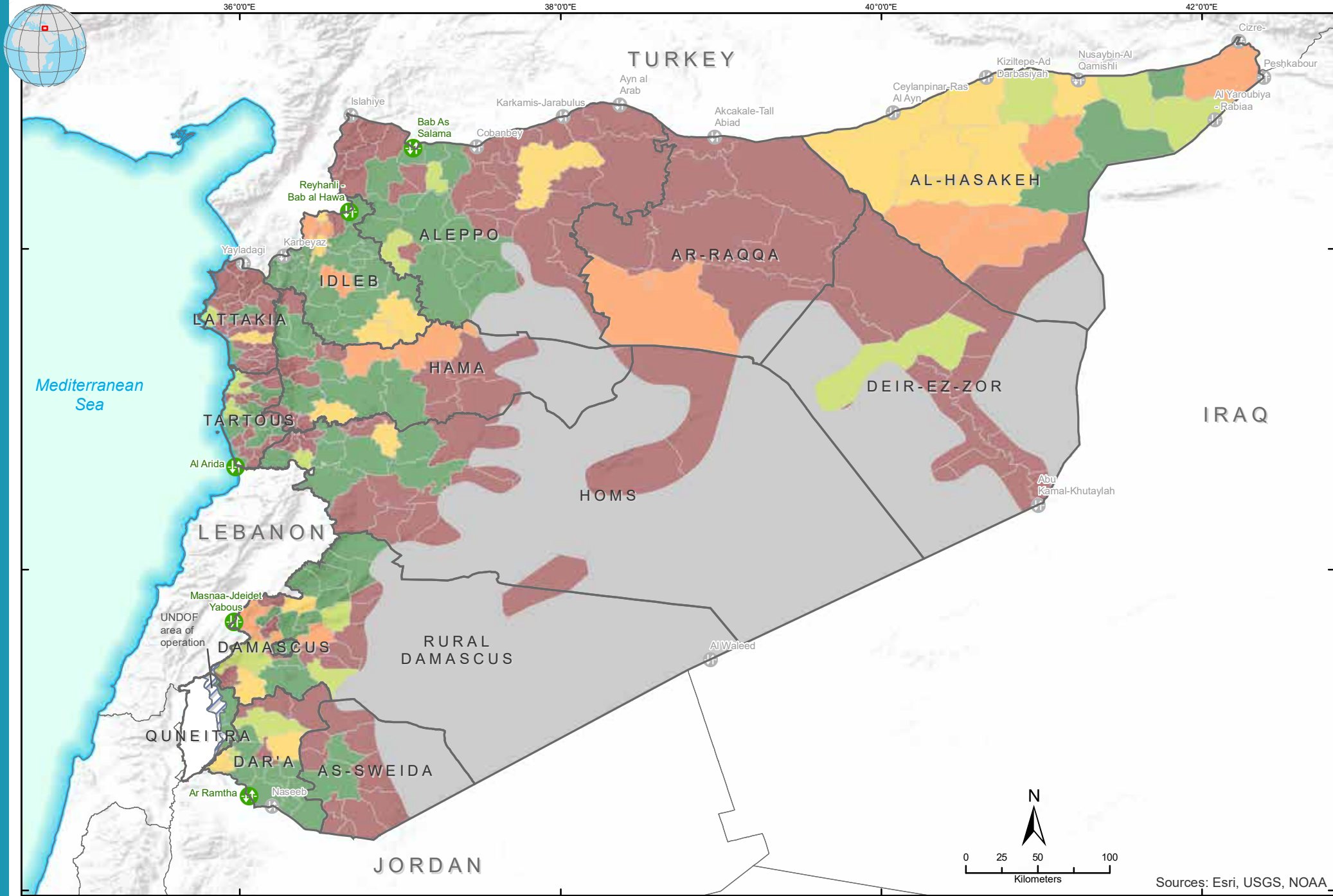
\*Note: SADD is based on ratio of 49:51 for male/female due to lack of consistent data across partners. SADD information provided is for food assistance only.

**Key Resources: (Click Below)**

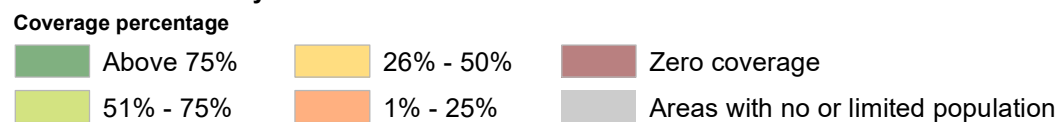
1. Revised Rapid Assessment Tool
2. Sector standards for targeting, selection criteria & response package revised as of 2017

For more information & resources, please visit:  
<http://fscluster.org/syria>

Information visualized on this map is based on data collected from 3 hubs and Iraq/NES, provided by WFP and 18 orgs.



**SO1 Beneficiaries by Sub-District**



**Border Crossing**



Sources: OCHA, WFP, GLCSC, UNGIWG, UNHCR, Geonames  
 The designations employed and the presentation of material in the map(s) do not imply the expression of any opinion on the part of WFP concerning the legal or constitutional status of any country, territory, city or sea, or concerning the delimitation of its frontiers or boundaries.

This dashboard is based on best available information at the time of production. Future updates may vary as new information becomes available.

Contact: [info.wos@fscluster.org](mailto:info.wos@fscluster.org)  
 Syria Emergency Page on: <http://fscluster.org/syria>

Sector Objective 2 & 3: Support the life-saving livelihoods of affected households by increasing agricultural production, protecting and building productive assets and restoring or creating income generating opportunities & Improve the capacity to deliver essential services for improved linkages with value chain through the rehabilitation/ building of productive infrastructure as well as supporting services

## PEOPLE IN NEED

### Food & Livelihood Assistance

9 Million

Humanitarian Needs Overview (HNO) - 2017

September 2015 8.7 Million  
 June 2016 9.4 Million  
 September 2016 9.0 Million

Sector Objective 2 & 3  
 agricultural production, asset protection & income generating activities

### OVERALL TARGET SO2 & SO3

5.1 Million  
 2.4 Million  
 5.1 Million

### SEP 2017 PLAN RESPONSE

agriculture and livelihoods  
**826,576**  
 (16%) of SO2+SO3 Target

provision of services & restoration of productive infrastructure

Humanitarian Response Plan (HRP) - 2017

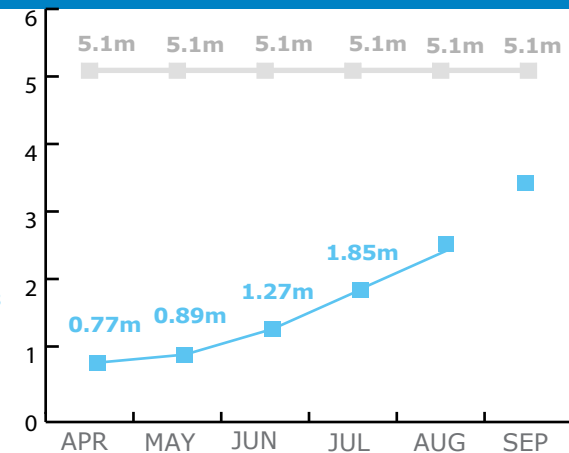
## BENEFICIARIES



WHOLE OF SYRIA

## SO2 & SO3 RESPONSE

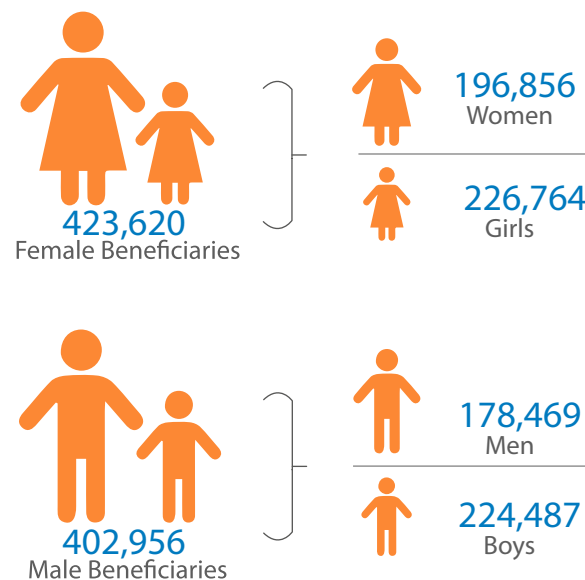
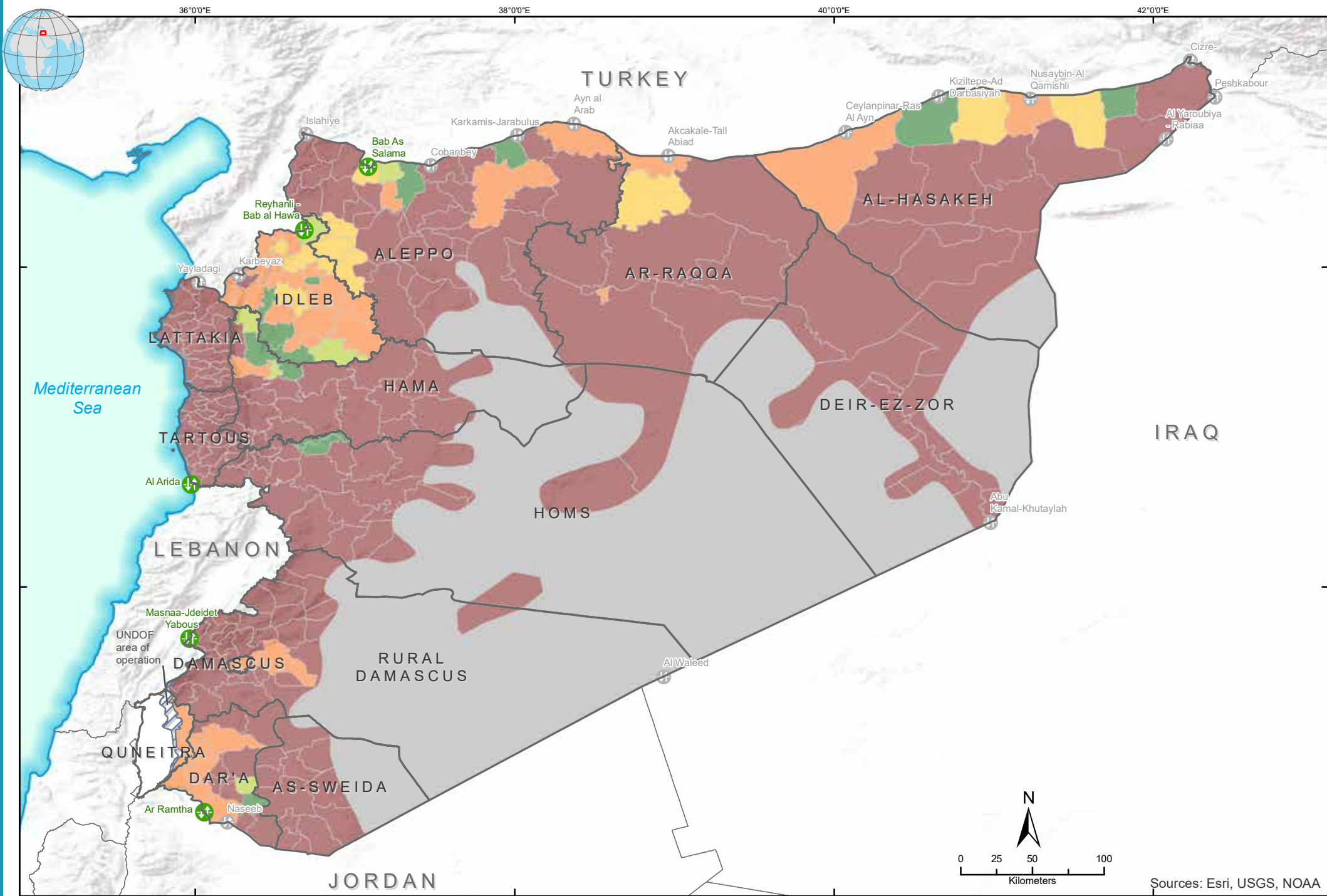
SO2 & SO3 Target  
 Reached Beneficiaries



## BENEFICIARIES REACHED BY MODALITIES AND ORIGIN

## SEPTEMBER 2017 PLAN RESPONSE

136,872 Agriculture inputs	From within Syria	136,872 From neighbouring countries
11,845 Small-scale food production	From within Syria	11,845 From neighbouring countries
75,399 Asset building and protection	From within Syria	75,399 From neighbouring countries
64,199 Veterinary support	From within Syria	64,199 From neighbouring countries
25,798 Income generation activities	From within Syria	25,798 From neighbouring countries
512,463 Rehabilitation of infrastructure & provision of services	From within Syria	512,463 From neighbouring countries



\*Note: SADD is based on ratio of 49:51 for male/female due to lack of consistent data across partners.

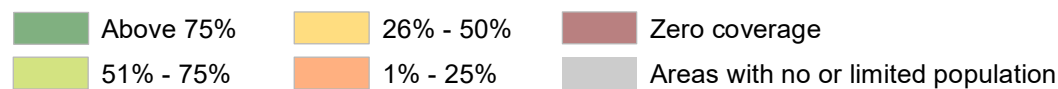
### Key Resources: (Click Below)

1. Revised Rapid Assessment Tool
2. Sector standards for targeting, selection criteria & response package revised as of 2017

For more information & resources, please visit:  
<http://fscluster.org/syria>

Information visualized on this map is based on data collected from 3 hubs and Iraq/NES, provided by FAO and 18 orgs.

### SO2&3 Beneficiaries by Sub-District



### Border Crossing



Sources: OCHA, WFP, GLCSC, UNGIWG, UNHCR, Geonames  
 The designations employed and the presentation of material in the map(s) do not imply the expression of any opinion on the part of WFP concerning the legal or constitutional status of any country, territory, city or sea, or concerning the delimitation of its frontiers or boundaries.

This dashboard is based on best available information at the time of production. Future updates may vary as new information becomes available.

Contact: [info.wos@fscluster.org](mailto:info.wos@fscluster.org)  
 Syria Emergency Page on:  
<http://fscluster.org/syria>