



Vegetable garden Abyei Administrative Area

FSL Cluster Meeting

27th June 2023

Venue: Virtual (MS Teams)

Time: 11:00 AM – 12:30 PM

Agenda



Chair: Jean-Loic Guieze (FSLC)

Meeting Agenda:

- 1. FSLC Dashboards May 2023 – Jeanloic Guieze (FSLC) – 5 mts**
- 2. Ongoing Sudan Crisis Response – brief update by Alexander Riley (FSLC) – 20mts**
- 3. Update on stakeholders' consultations, including community engagement for a multi-year HRP (2024-2026) by Jean-Loic (FSLC) – 20mts**
- 4. FSL Cluster SAG and NGO Co-Lead Membership Elections – July 2023 by Isaac Jebaseelan (FSLC) – 10mts**

AOB:

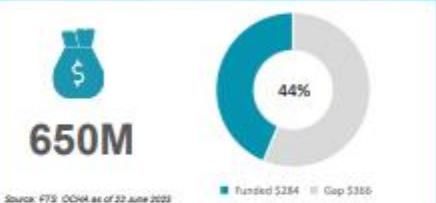
- FSL Cluster Members (if any) – 10mts**



HRP 2023 TARGET



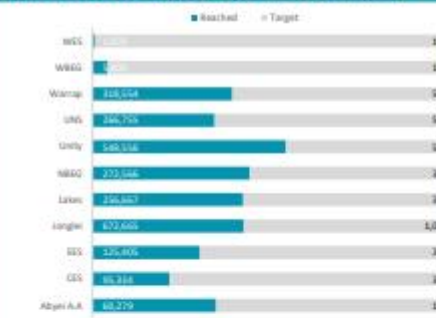
HRP 2023 FUNDING REQUIREMENT (USD)



FOOD ASSISTANCE RESPONSE KEY FACTS & FIGURES



RESPONSE BY STATE (Targeted Vs Reached)



RESPONSE BY MONTH



RESPONSE BY MODALITY



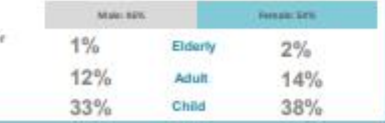
BENEFICIARY TYPE



REFUGEES RESPONSE

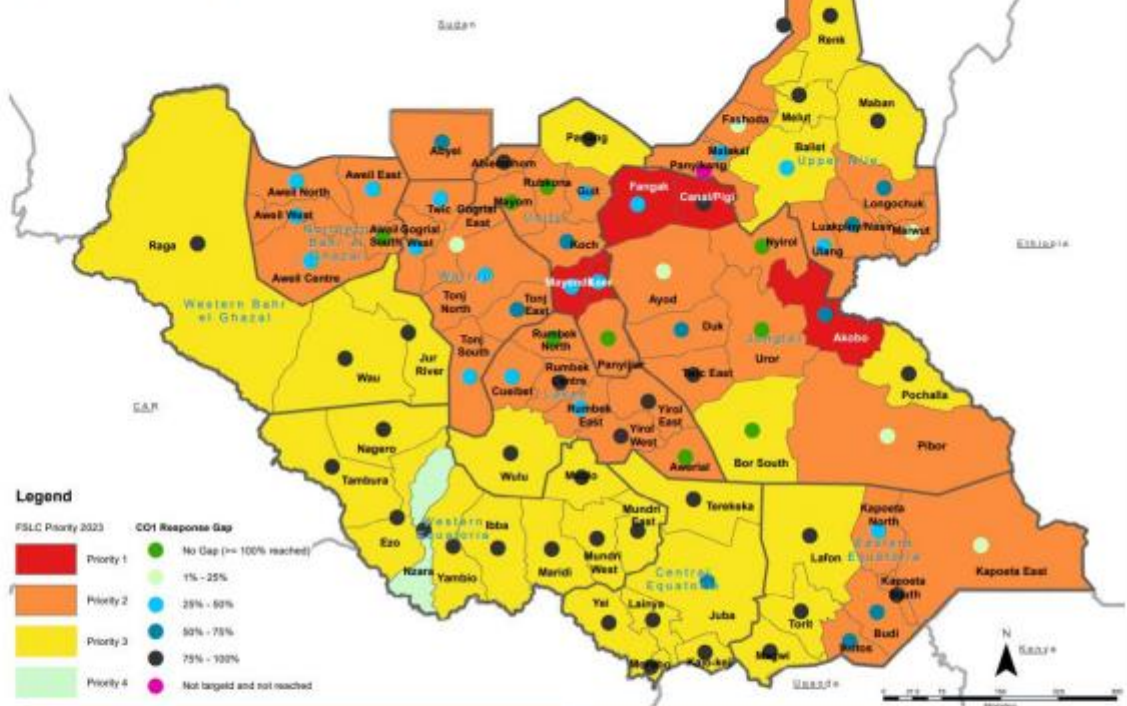


GENDER / AGE



FSLC HRP 2023 prioritization and food assistance (CO1) gaps as of May 2023

Note: The gap is calculated on the people targeted in HRP 2023 minus people reached as of April 2023.



CONTEXT UPDATE

IPC Classification In the lean season projection period of April to July 2023, an estimated 7.8 million people (this figure excludes Abyei) will likely face Crisis (IPC Phase 3) or worse acute food insecurity (63% of the population), with 43,000 people likely to be in Catastrophe (IPC Phase 5) acute food insecurity in Akobo, Canal/Pigi and Fangak counties of Jonglei State; and Leer and Mayendit counties of Unity State. During this period, an estimated 2.90 million people are likely to face Emergency (IPC Phase 4) acute food insecurity in South Sudan. [Click here](#) to read more.

Inter-sectoral needs severity classification as of June 2023: According to the latest Needs Analysis Working Group classification, the needs severity is the highest in the six counties (Akobo, Fangak, Canal/Pigi, Leer, Mayendit and Malakal) with pockets of IPC Phase 5 during the lean season. Likewise, due to violent conflicts that have exacerbated needs and negatively affected the delivery and pre-positioning of food aid in late 2022 and early 2023, the risk of IPC phase 4 population falling into IPC phase 5 is high in Pibor county. In Kapoeta East, three consecutive years of severe drought has wiped out the crops on which the population's food security depends on.

OPERATIONAL PARTNERS BY STATE – CO1

State	Operational Partners
Abyei A.A	WFP, ACAD
EES	WFP, ForAfrica, Malteser, SAADO, WVI, ACROSS, IRW, NPA, AAH
EES	WFP, ADRA, NPA, PLAN, SCI, CODAID, OPRD, AIF
Jonglei	WFP, CRS, FCA, GRDA, HFO, LWF, NPA, NRC, OXFAM, APA, ADA
Lakes	WFP, NPA, PLAN
NBEG	WFP, NRC, VSF-S, WHH, WVI, AAH, CWV, FLDA, ForAfrica
Unity	WFP, WHH, SP, NRC, IRC, DRC, RCDI
UNS	WFP, WVI, NRDC, CMD, SP, GOAL, RI, ACTED, ADA
Warap	WFP, ForAfrica, WVI, SAADO, NRC, ACAD
WBG	WFP, IRW, Malteser, NRC, ZOA Dorcas
WES	WFP, WVI, STO



HRP 2023 TARGET



HRP 2023 FUNDING REQUIREMENT (USD)



LIVELIHOOD SUPPORT RESPONSE KEY FACTS & FIGURES

FSL Cluster Objective 2 (CO2): Enhance and sustain emergency food production through complementary vegetable and crop livelihood inputs, fishing and livestock support in IPC 3, 4 and 5.



RESPONSE BY STATE (Targeted Vs Reached)



RESPONSE BY MODALITY



BENEFICIARY TYPE

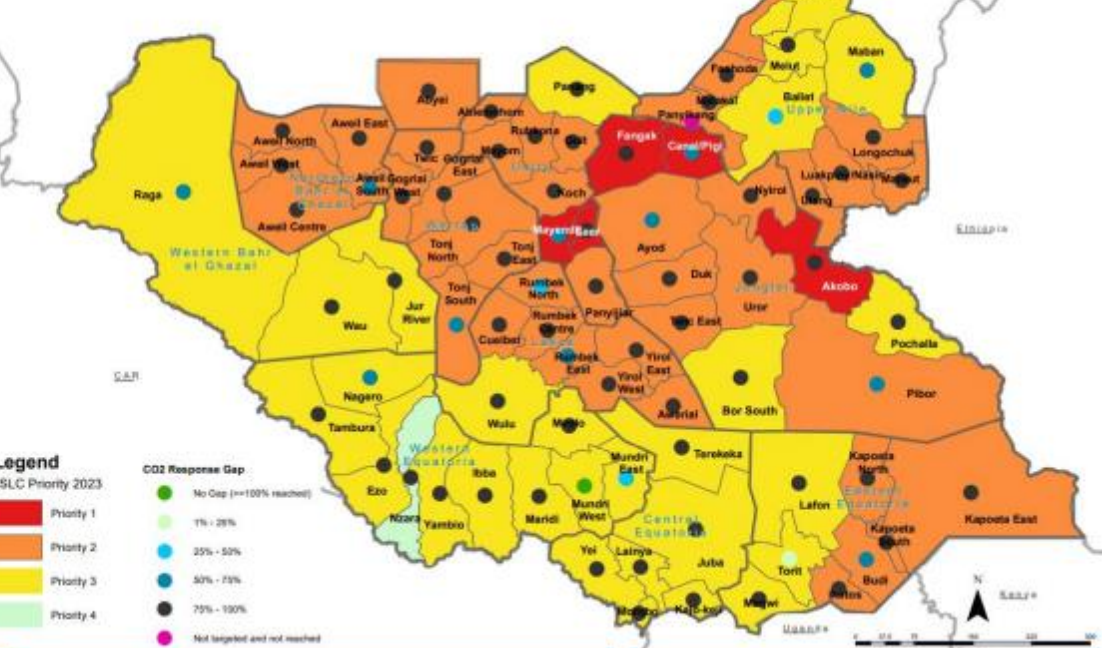


GENDER / AGE



FSLC HRP 2023 prioritization and Livelihood support (CO2) gaps as of May 2023

Note:
The gap is calculated as the people targeted (All IPC 4+ population and 60% of IPC 3) minus people reached with livelihood support (Crop, Vegetable and fishing kits).

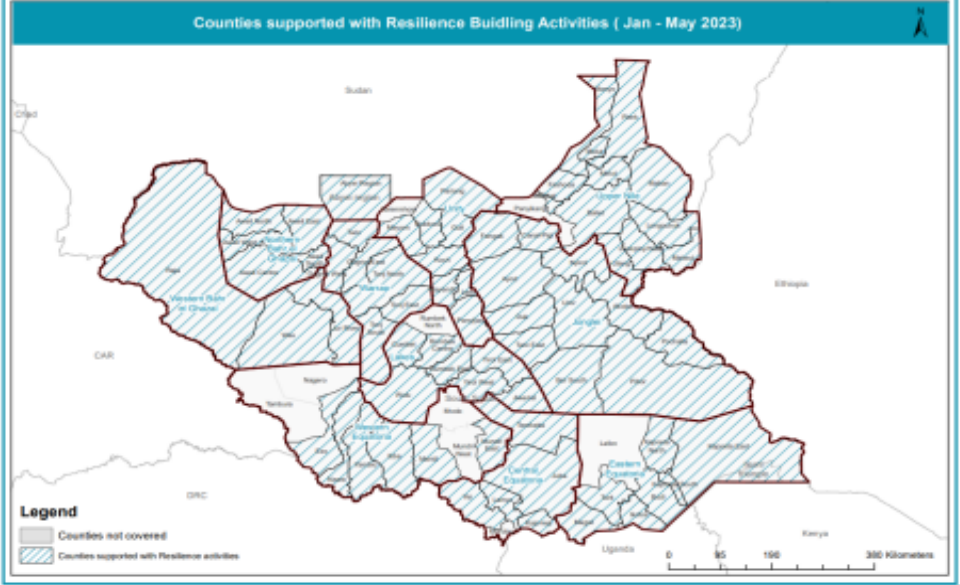
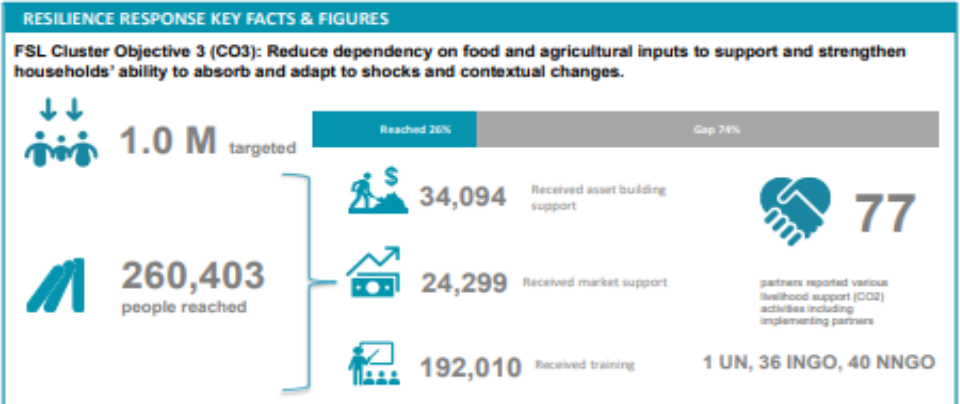
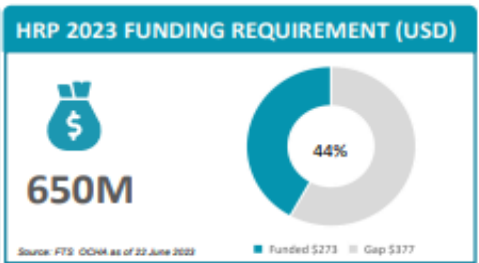
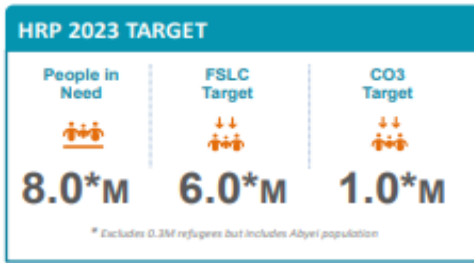


LIVELIHOOD KITS DISTRIBUTED BY MONTH

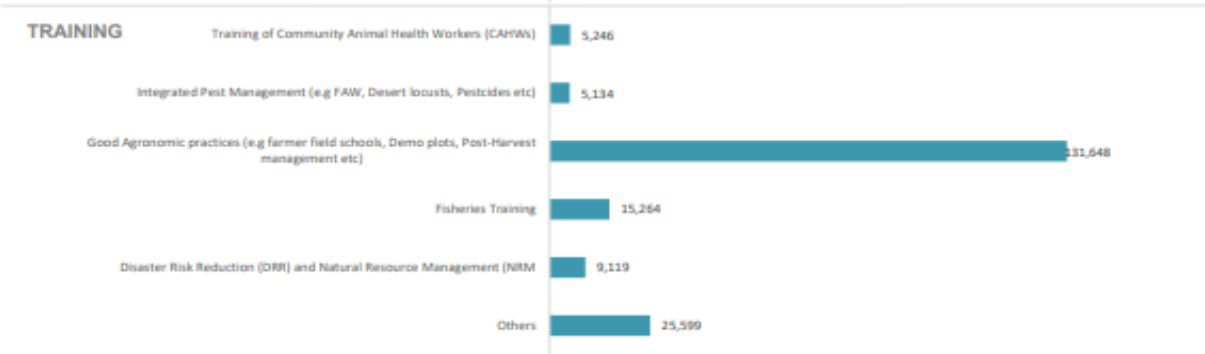
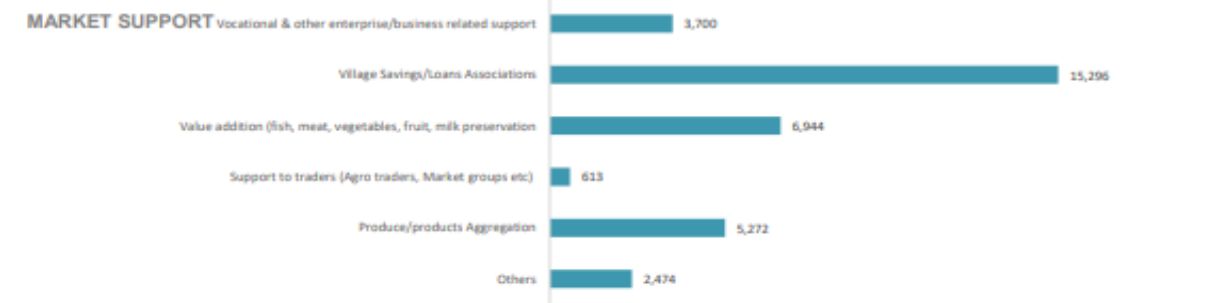
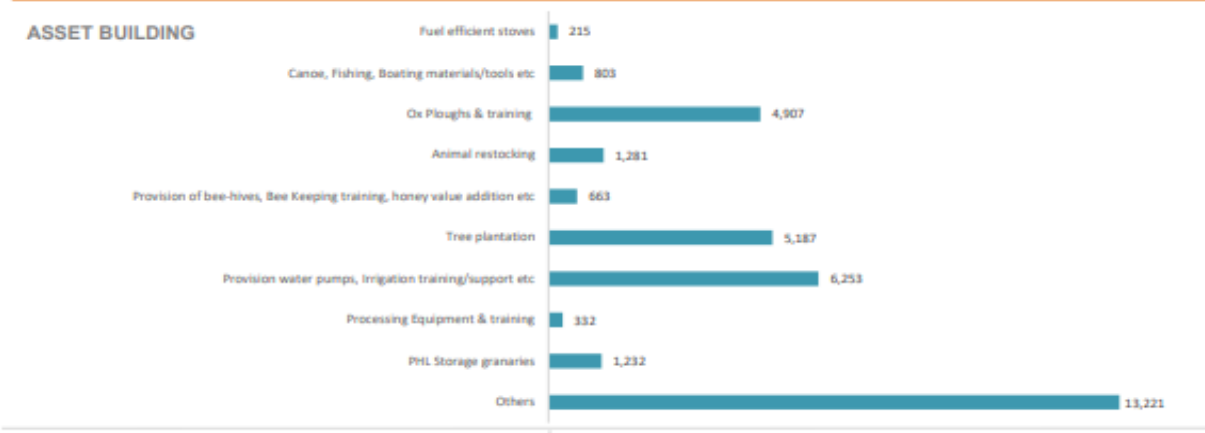


OPERATIONAL PARTNERS BY STATE - CO2

State	Operational Partners
Abyei A.A	FAO
CES	FAO, IRC, IRW, NPA, NRC, PH, SAADO, SDMIC, VSF-G, VSF-S, WVI, GEWLP, MI, FAA, AVSI, Tearfund
EES	AVSI, Caritas I, Caritas S, CDSS, CORDAID, CRS, CRSF, FAO, IRW, RAAH, VSF-G, WHH, SCI
Jonglei	AAH, ACRA, ALO, CMD, CRS, CRSF, FAO, NPA, NRC, VSF-G, ForAfrica, VSF-S, CAO, SLDA, ARSS, HFD, OXFAM, FAA, ADA
Lakes	CINA, HELP, VSF-G, FAO, NPA, ILIDD
NBEG	CWW, FAO, ForAfrica, HRY, NRC, SAADO, VSF-S, AAH, WVI, KCDA
Unity	CWW, FAO, IRC, NRC, SP, VSF-S, WHH
UNS	ACRA, AHC, FAO, RuCADP, SI, VSF-G, VSF-S, WVI, CMD, NRDC, RI, ADA
Warrap	AAH, FAD, IRW, SCI, ZDADORCAS, NRC, WVI, ADRA
WBEG	ASCO, FAO, II, NRC, ZDADORCAS, MI, PCO
WES	CORDAID, WVI, FAO, STO



CO3: RESILIENCE (Number of people reached through various Resilience building activities)



CO3 OPERATIONAL PARTNERS

FCA , AAHI , AAH , ADRA , AHC , ACTED , ARSS , ALD , ASCO , APEBA , AVSI , CTP , CARE , Caritas L , Caritas S , CRS , CCS , CEF , CRSF , CMD , CH , CAD , CAFAD , CARD , CINA , CIDO , CWW , CSDRO , CORDAID , DRC , FARMSTEW , FLDA , FAO , FAA , ForAfrica , GRDA , GARD , HFO , Help , HRSS , ICP , ILIDO , IRC , IRW , II , LDO , Malteser , MC , NRDC , NH , NSDO , NPA , NRC , OPEN , ORBIT , OXFAM , PCO , PH , PLAN , Ri , RuCADP , SLDA , SP , SCI , SAADO , SDMIC , SI , STO , TEARFUND , TOCH , Titi , USHO , VSF-G , VSF-S , WHH , WWI , ZOADORCAS

Renk Returnee Response



- Distributions of in-kind assistance in the returnee sites Zero, Abu-Khadra School, and Riverside Collective Centre since June 20th
- Scope registration underway in the Transit Centre
- Duplication of host community in scope system
- Planned scope registrations at Zero, Abu-Khadra School, and Riverside Collective Centre
- Wrist bands being provided at Joda border point to identify returnees
- Questions over the continued provision of hot meals at the TC – new arrivals likely to be most affected
- High energy biscuits have been exhausted and are awaiting resupply
- Renk town has experienced significant rains. As a result, several of the communal shelters were affected with water coming inside due to flooding

Paloich Returnee Response



- A second distribution of in-kind commodities took place in Paloich, beginning 16th June
- Total of 117 metric tons of assorted food commodities was distributed to around 6,500 returnees
- Increase of the caseload since the first distribution on May 28th
- Not intending to switch modality to cash in Paloich due to distance to market
- Discussions underway regarding the potential movement of the returnees to another site in Paloich
- Still low capacity for onward movement from Paloich – only flights
- Limited movement options pose a challenge in terms of assistance access and may act as a pull factor and increased congestion if onward movement isn't improved

Malakal Returnee Response



- WFP completed simultaneous June food distributions in Malakal town and the PoC on the 15th June, providing 45,389 individuals were provided with 395MT of assorted foodstuffs.
- Between 8th and 14th June no food assistance was provided to the returnee population.
- As of 23 June 2023, approximately 37,000 people remain in Malakal PoC. Around 80 remain in the buffer zone near the humanitarian hub perimeter, while over 6,000 people have reportedly moved to Malakal town.
- Security situation in the PoC remains tense. i) On June 20th, a male resident of the Malakal PoC injured two people before being killed, ii) On 22nd June, 6 armed men breached the perimeter of the UNMISS compound.
- High likelihood for food assistance to be disrupted if insecurity continues.



How can we contribute to reduce humanitarian needs by 2026 ?

FOOD SECURITY AND LIVELIHOODS CLUSTER

JUNE 2023

Development of a multi-year strategy by FSLC stakeholders

TIMELINE

June-July	Early August	End of August	September
Draft a FSLC 2024-2026 strategy	Draft a 2024-2026 action plan	Develop FSLC plan and guidelines	Develop the HRP
<u>Consultations</u> with key stakeholders: FSLC partners, Gvt., Communities , Donors, gFSC, ICCG, HDP actors, private sector	1 <u>Workshop</u> to validate the strategy, draft and action plan	Develop the action plan and FSLC guidelines	Integrate the HRP in a 2024-2026 HDP strategy

Consultation of the Communities

Terms of reference of the Community consultation



TOR Community
consultation

Step 1: FGDs and KIs with the communities (by FSL partners, in each county)

Vision: How would you like to see the food security of your community by 2026, how would it look like?					
	List of food security and livelihood challenges based on severity (1 being most severe)	How can these challenges be addressed?			Comments from the Key Informants Interview
		How can the community help to address each challenge mentioned (focus on livelihood building rather than food assistance)	How can the government help to address each challenge mentioned (focus on livelihood building rather than food assistance)	How can humanitarians help to address each challenge mentioned (probe on different types of livelihood interventions) (focus on livelihood building rather than food assistance)	
1)					
2)					
3)					
4)					
5)					

Consultation of the communities

Timeline:

Date/Time	Event	Activity	Responsibility
27 th June at 11:00am	FSLC Meeting	Announce the design of FSL Cluster's community engagement process	FSLC / INGO
27 th June at 02:00pm	Virtual meeting with State FPs	<ul style="list-style-type: none"> - Rollout & orient "Community Engagement TOR" - Provide guidance and discuss the budget to conduct FGDs 	FSLC CCs and State FPs
29-30 June	Sub National ad-hoc FSLC Meeting	Orientation on the guidance note, to the partners	State FPs and partners
3- 7 th July	FGDs with the community	Partners to organize and conduct Focus Group Discussions (Ref. Point 4, 5 and the table in the process above)	FSL Cluster Members
10-13 th July	Compilation of the feedback	Consolidate and document state-wise profiles and provide a 3-year timeline (Ref. Point 6 and the table above)	State FPs (WFP/FAO)
14 th July	Submission of compiled tables	Send the copies of the inputs from their respective Counties together with the State Profiles (79 counties and 10 States, plus Abyei)	State FSL FPs
18 th to 20 th July	Series of Virtual Meeting (1hr each)	State FPs' debriefing and consolidation of the inputs from 10 States + Abyei.	FSL Cluster and State FPs



FSLC Roles for the term 2024 & 2025 (2 years)

1. FSL Cluster Strategic Advisory Group (SAG) Membership

- **National NGO – 1 position**
- **International NGOs – 2 positions**

2. FSL Cluster INGO Co-Lead Membership – (Cluster Co-Coordinator)

- **International NGO – 1 position**



1. Existing SAG:

- 2 NNGOs (**CH & AHC**) – CH for re-election (2 years served); for AHC, 1 more year to go
- 2 INGOs (**Save the Children & VSF–Suisse**) – Both are up for **re-election** (2 years served)
- Existing **SAG** will serve their term **until end of August 2023**
- New SAG will start with **2024 HNO & HRP Process** in September 2023

2. Election Process:

- FSLC accepts the EoI / Nominations for SAG membership from **FSLC Operational Partners ONLY** (implementing FSL programs for **over 3yrs. & regular attendance at meetings**)
- Submit **One-page agency brief on SUITABILITY** to info.southsudan@fslcluster.org and cc Monika.Shrestha@wfp.org by **COB on Friday, the 7th July 2023** (No prescribed template/format)



3. Selection Criteria

- **Experience** in providing an advisory role
- Extensive **knowledge** of South Sudan
- Technical **competence** in emergency response of **food assistance & livelihood support**
- Available **time & staff capacity** (at a suitable level): **attend meetings/ review documents** etc.

4. Election by simple Microsoft Forms Online:

- Cluster Team will announce the **names of the contesting NGOs**, on **12th July**
- The **One-Pager** and the **Polling link** will be sent **ONLY** to FSLC Operational Partners on **17th July**
- **NNGOs vote for one representative** and **INGOs vote for two representatives** to the **SAG**
- **One vote ONLY per agency**, respectively – i.e. NNGOs vote for NNGO contestants only
- Polling closes on **31st July by 5:00pm**, results to be announced on **9th August** in the **FSLC meeting**



- Elections to take place mid-year (**July 2023**) and for the current position to run until the end of the year (**December 2023**) enabling new INGO, the time to recruit & mobilize resources to start in **January 2024**, for a full FSL Cluster Biennial Cycle.

Currently:

- INGO Co-Coordination position – due for election
- NNGO Co-Coordination position – will not be up for re-election until **July 2024** as needs to complete two years.



1. Process:

- Nominations from FSL Operational (INGO) Partners ONLY (implementing FSL programmes for more than 3 years and **regular attendance** at meetings)
- Contesting **INGOs** need to submit **One-page agency brief** to info.southsudan@fslcluster.org and cc Monika.Shrestha@wfp.org by **COB on Friday, the 7th July 2023**. (No prescribed template/format)

2. Selection Criteria:

- **Experience** as an FSL partner in South Sudan
- **Contribution to the FSL Cluster** during this time
- **Technical knowledge** in emergency response of food assistance & livelihood support
- And most importantly your **ability to fill the role and fund the position for a 24 months period**



3. Election by simple Microsoft Forms Online:

- Cluster will announce the names of **INGOs** contesting, on **12th July**
- **Polling link**, together with “**One-Pager Agency Brief**” will be sent **ONLY** to the **FSL Operational Partners (INGOs)** on **17th July**
- **INGOs elect their new INGO Co-Lead Agency** to the Cluster (1 position)
- **One vote only per agency** and this is for INGO Co-Lead, so, only INGOs can cast their votes
- Polling closes on **31st July by 5:00pm**, results to be announced on **9th August** in the **FSLC meeting**