






Context – operational challenges

 **Ongoing insecurity** continues to affect access in some parts of the country, especially the Greater Equatoria region.

 **The closure of major banks** is affecting the payment of field trainers.

 While the height of the rainy season is over, **flooding continues** to affect FAO operations with rapid response missions being conducted by air through the Logistics Cluster.

Highlights

- 8 050 households reached through seed fairs in Yambio in August and September.
- Following the completion of post-planting assessments in August, harvest assessments are ongoing throughout the country, and finalized in Northern Bahr el Ghazal, Western Bahr el Ghazal and Warrap.
- FAO participated in the International Rabies Day through conducting a vaccination campaign in Protection of Civilian sites in Juba.
- FAO led foot-and-mouth disease investigation missions in late August and throughout September in Northern Bahr el Ghazal (16 camps in the region), Lakes (four different locations) and Jonglei (four camps).
- FAO is reopening offices in Yambio and Maban to support new resilience projects.

Joint FAO and WFP Rapid Response Mission to Haat center, Haat *payam*, Ayod county (15 – 22 September 2017)

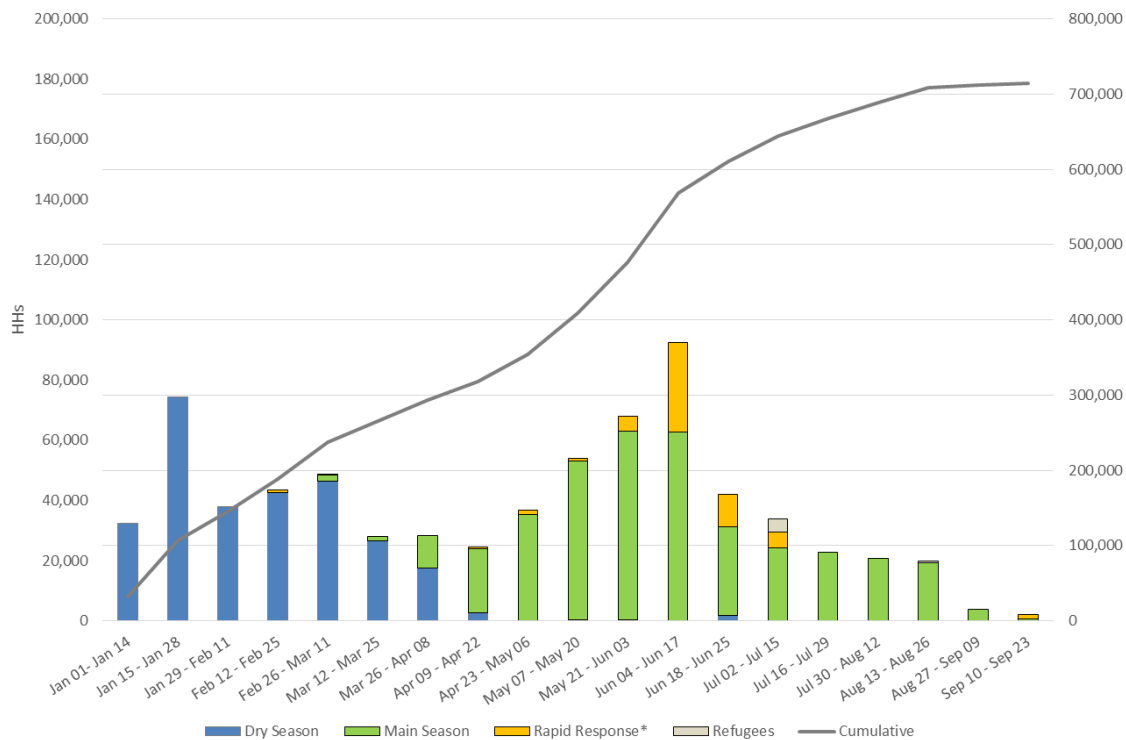
Aim: To deliver life-saving livelihood assistance to severely food insecure populations in a remote Suud location in Jonglei.

Delivery: 1 680 households reached through the distribution of 1 680 rapid response kits (three types of fast-maturing vegetable seeds, one hand tool, and one fishing kit).



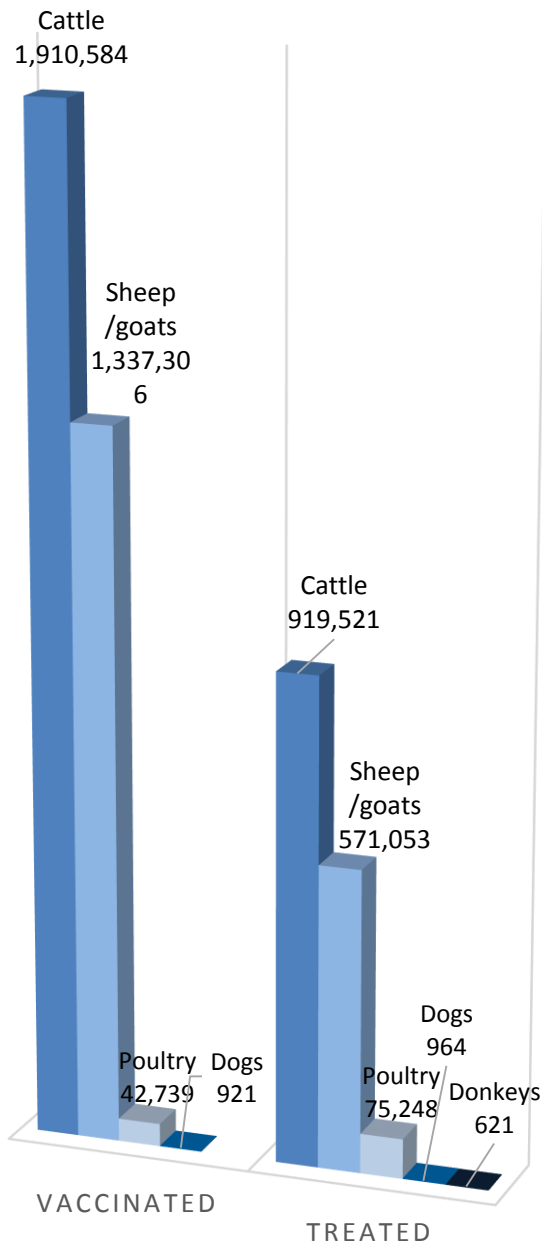
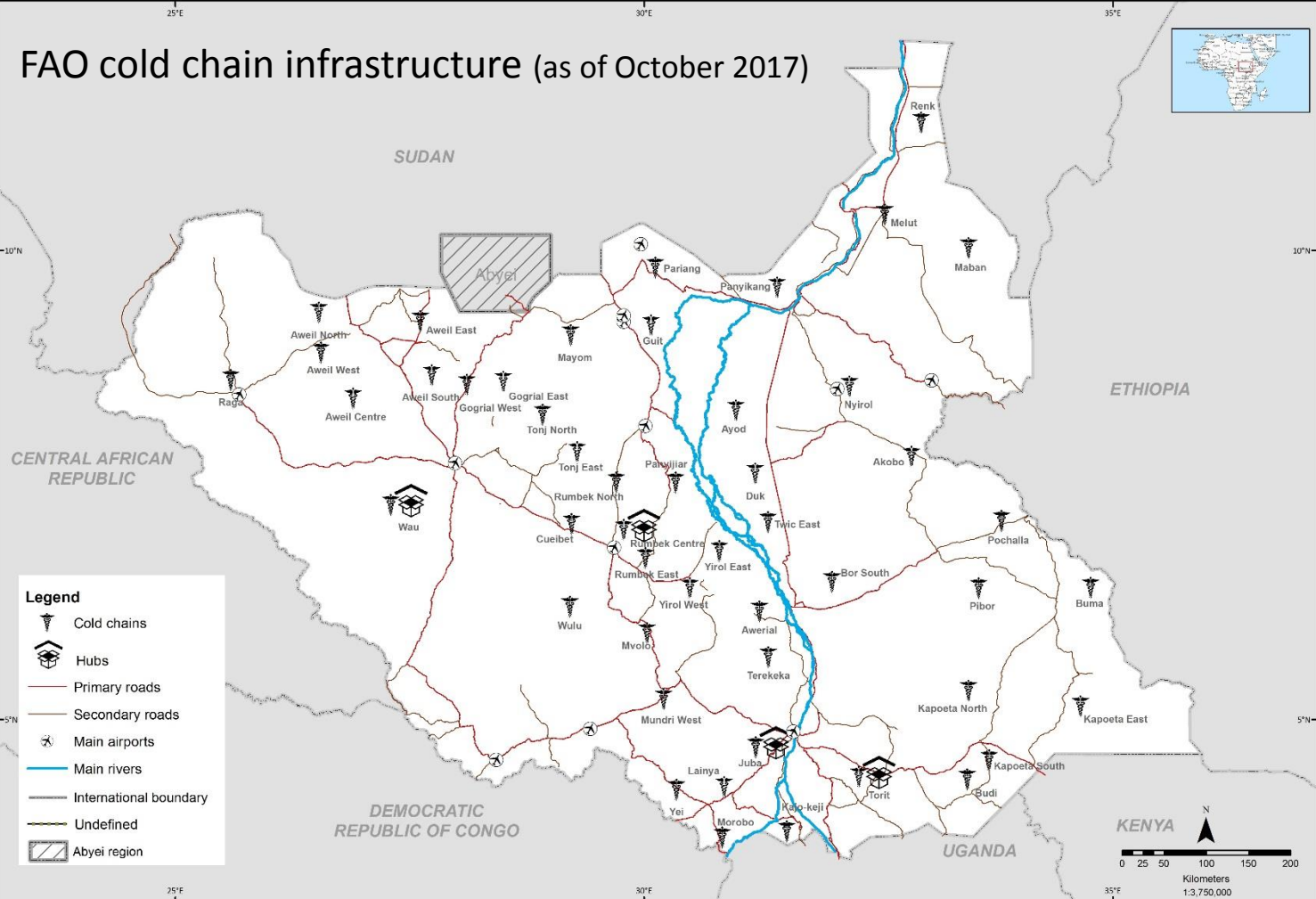
RRM, Haat center, 23 September 2017. Photo by Yoal Bum

Emergency livelihood kit distribution by household: January – October 2017



Emergency livestock interventions

4.8 million animals have been treated and vaccinated under the 2017 ELRP. Contributing to the treatment and vaccination campaigns, FAO has 49 functional kerosene and solar refrigerators throughout the country providing the necessary support to veterinary medicine and vaccine storage.



Date Created: October 2017 Final boundary between the Republic of Sudan and the Republic of South Sudan has not yet been determined. Final status of the Abyei area is not yet determined. The boundaries and names and the designations used on this map do not imply official endorsement or acceptance by the United Nations/UNFAO. Some map data not verified, use at your own risk. ProjData: Geographic/192384

CONTACT

Pierre Vauthier | Deputy FAO Representative | Juba, South Sudan | Pierre.Vauthier@fao.org
 Lieke Visser | Communications Officer | Lieke.Visser@fao.org | Fenella Henderson-Howat | Reporting Officer | Fenella.HendersonHowat@fao.org