



Cholera Daily SitRep as of 10th October 2017

Borno State Ministry of Health

Highlights

- 41 additional cases were reported.
- 1 death reported.
- No Alert.

Epidemiological summary

- Total number of suspected cases of cholera reported stands at 4788, with 61 deaths (CFR = 1.3%); 2391 cases in the Muna corridor (Jere LGA), 735 cases in Dikwa, 1618 cases in Monguno, cases in MMC and Mafa stands at 38 and 6 respectively
- Out of the 144 samples taken, 119 (83%) were RDT positive and 107 (74%) were culture positive.

Table 1: Number of suspected cholera cases reported as of 10th October 2017

	Jere	MMC	Mafa	Dikwa	Monguno	Total
Cases						
New cholera suspected cases	29	0	0	3	9	41
Cumulative cholera suspected cases	2391	38	6	735	1618	4788
Deaths						
New deaths	1	0	0	0	0	1
Cumulative deaths	43	2	0	13	3	61
Laboratory						
Number of specimen collected	57	20	2	29	35	144
Specimen Positive RDT	52	17	2	19	29	119
Specimen Positive Culture	45	15	2	18	27	107

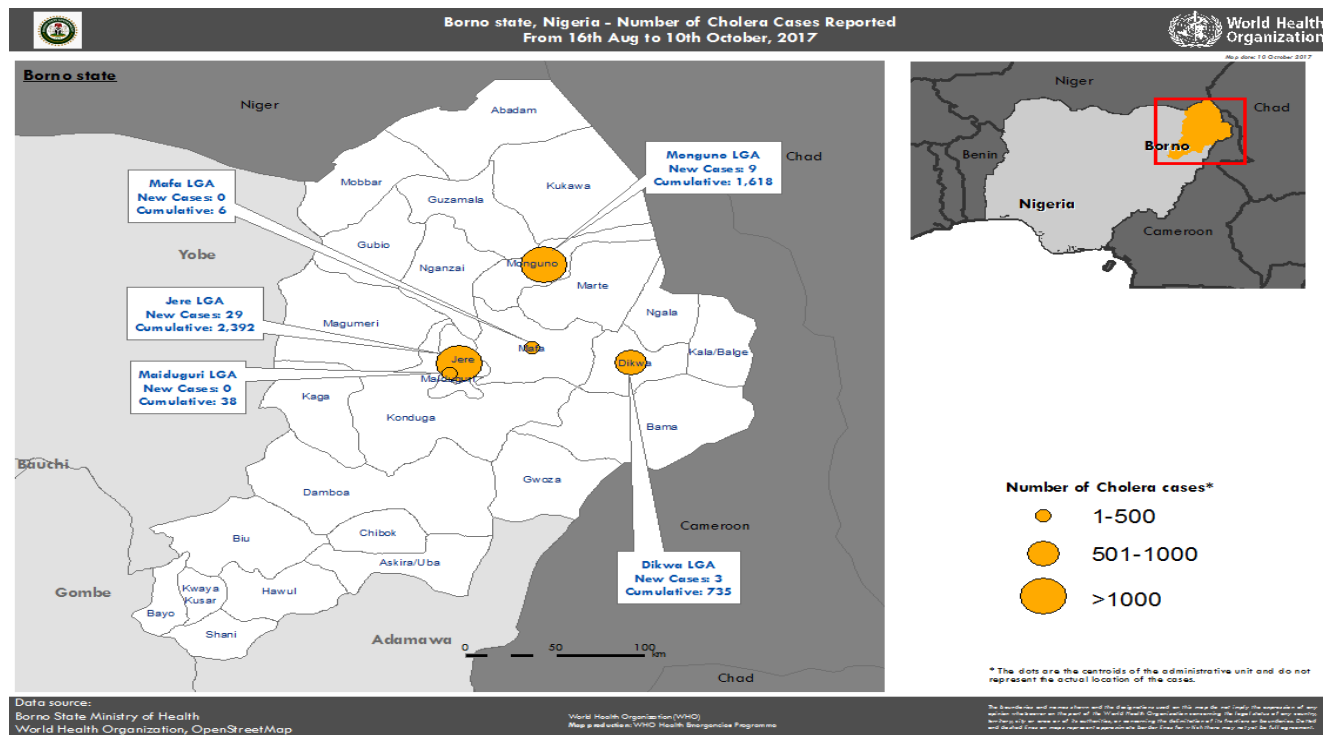


Fig1. Map of Borno state showing affected LGAs.

The total number of suspected cholera cases reported on 10th October 2017 shows a slight decrease compared to the number of cases reported on the 9th October 2017 and remains below 50 cases (Fig 2), the total number of suspected cases in the state has plateaued. Monguno and Dikwa LGAs reported 9 and 3 cases respectively same as was reported on the 9th October 2017, while Monguno has plateaued, Dikwa has reported below 5 cases for 4 days in a row, signalling a possible end to the outbreak there (Fig. 4). The number of cases reported in Jere also shows a slight decrease when compared to number reported from the previous day, 9th October 2017 (Fig. 3).

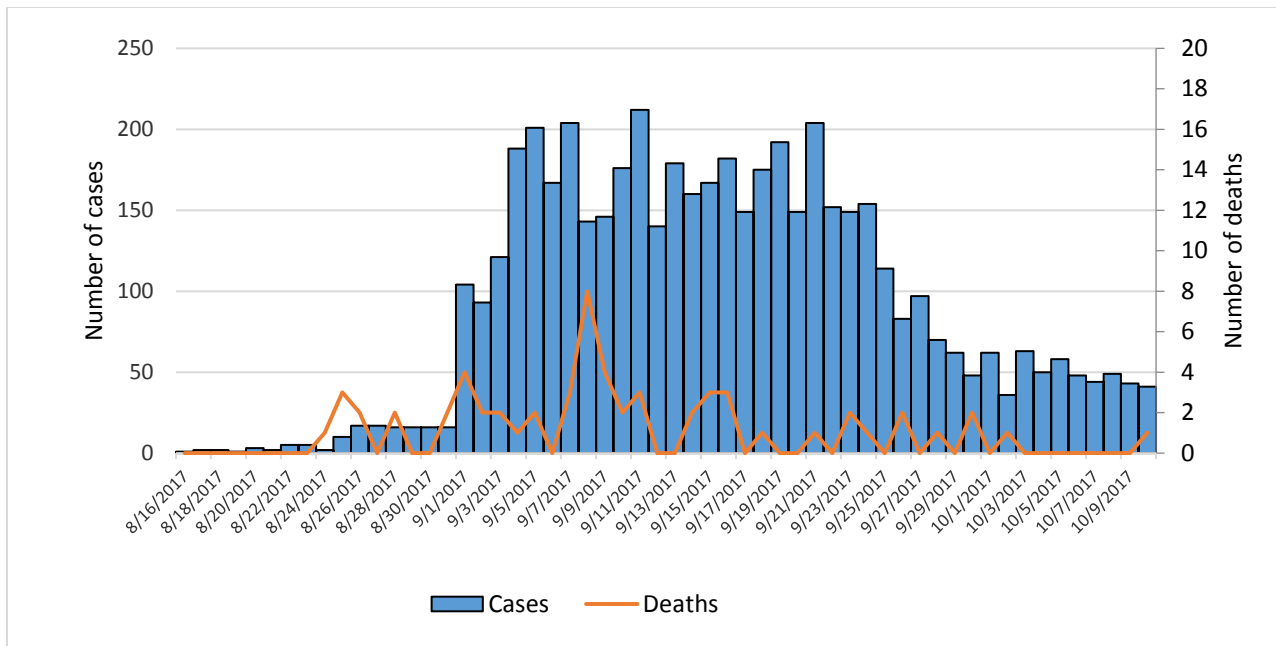


Fig 2a: Daily Epi-curve of cholera cases and line-curve showing number of suspected cholera deaths in Borno state

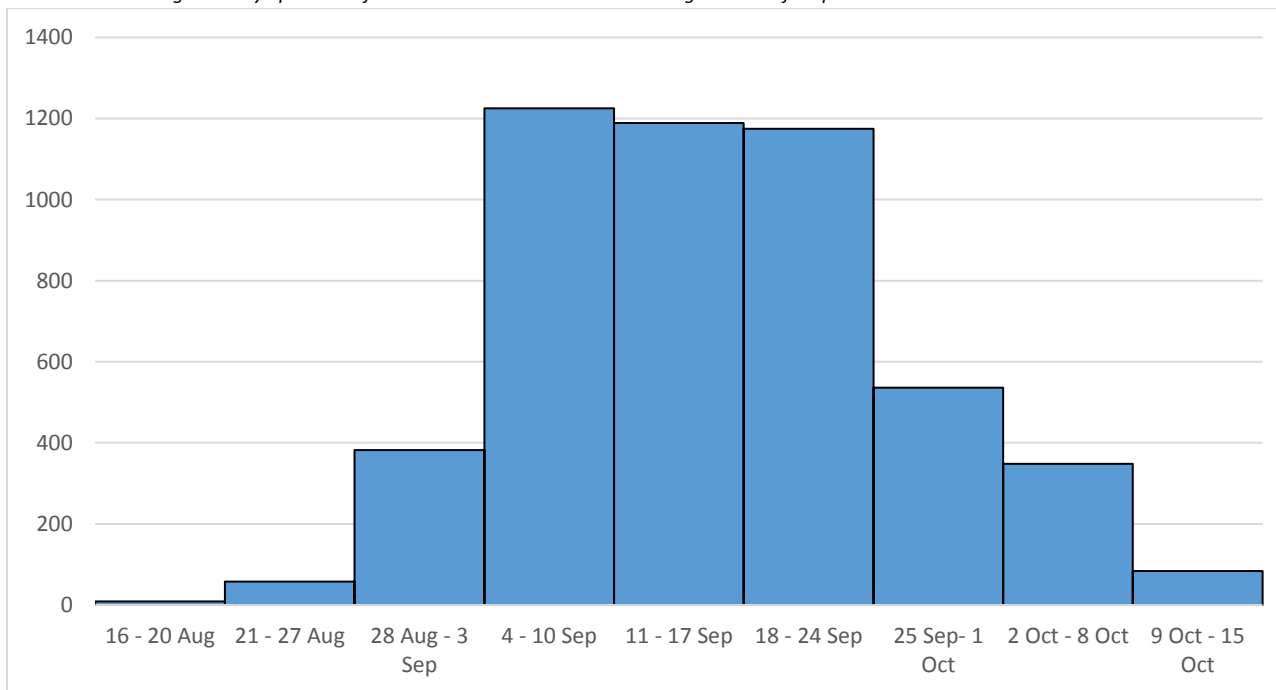


Fig.2b: Weekly Epi-curve of cholera cases in Borno state by weeks

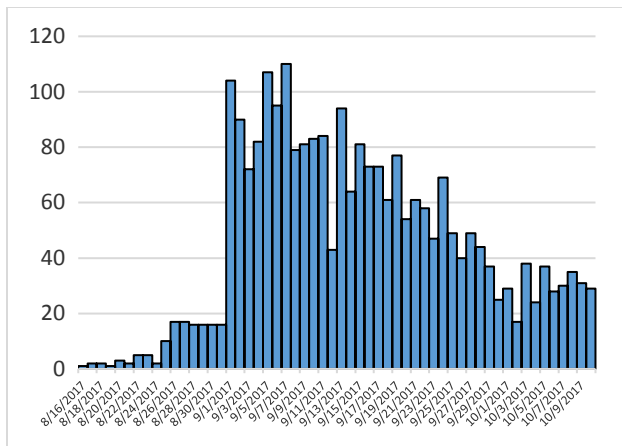


Fig.3b: Daily Epi-curve of suspected cholera cases in Jere and MMC

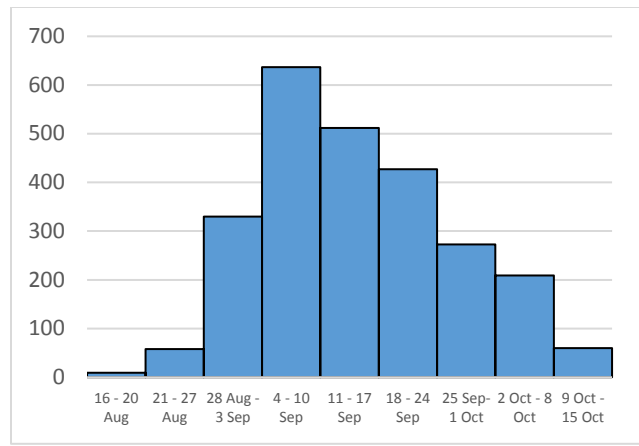


Fig.3b: Weekly Epi-curve of suspected cholera cases in Jere and MMC

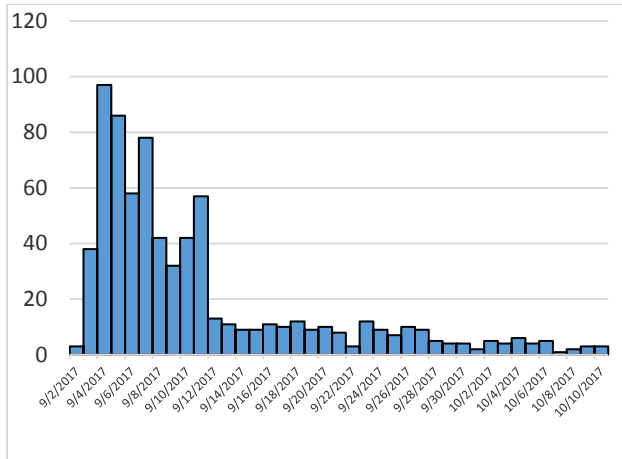


Fig 4a: Daily Epi-curve of suspected cholera cases in Dikwa LGA

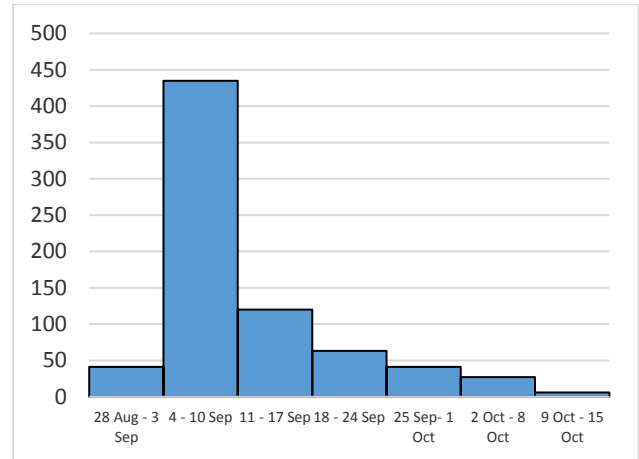


Fig 4b: Weekly Epi-curve of suspected cholera cases in Dikwa LGA

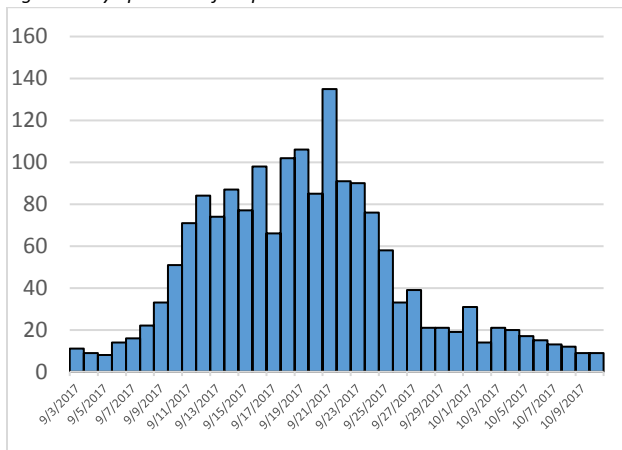


Fig.5a: Daily Epi-curve of suspected cholera cases in Monguno

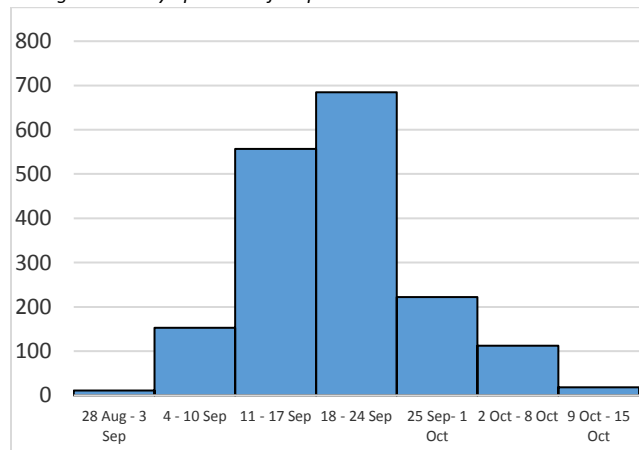


Fig.5b: Weekly Epi-curve of suspected cholera cases in Monguno

NB: The last bar on the weekly epidemiological curves above are not complete data for week 41

Response

1. Surveillance

- Active case search continues in hot spots and high-risk areas
- NO ALERT
- 2 cases found in Shuwari 2 during community case search and 1 referred to MSF Muna CTC
- Update from visit by Surveillance Team to Damasak, Mobbar LGA
 - No active case seen in the MCH clinic Damasak
 - Last suspected cholera case seen on 7/10/2017
 - No case found in community during Community case search

- Awaiting Samples culture results from UMTH/NCDC Lab
- Surveillance worked with Laboratory, 26 samples collected
 - 21 were RDT Positives
 - 5 were RDT Negatives
 - Samples will be sent to NCDC National Lab for culture
- Priority locations identified and communicated to WASH and risk communication teams for priority intervention in Jere LGA: Dikwa lowcost (14 cases), Zannari (2 cases), Shuwari (2 cases), Simari (4), El minskin (1), Forestry (2), Costum house (1).

2. Case management

Table 2: In-patient admissions to CTCs

	Jere	MMC	Dikwa	Monguno	Mafa	Total
Admissions						
New admissions	35	0	3	9	0	47
Number on Admission	88	0	5	23	0	116
New Discharges	36	0	2	20	0	58

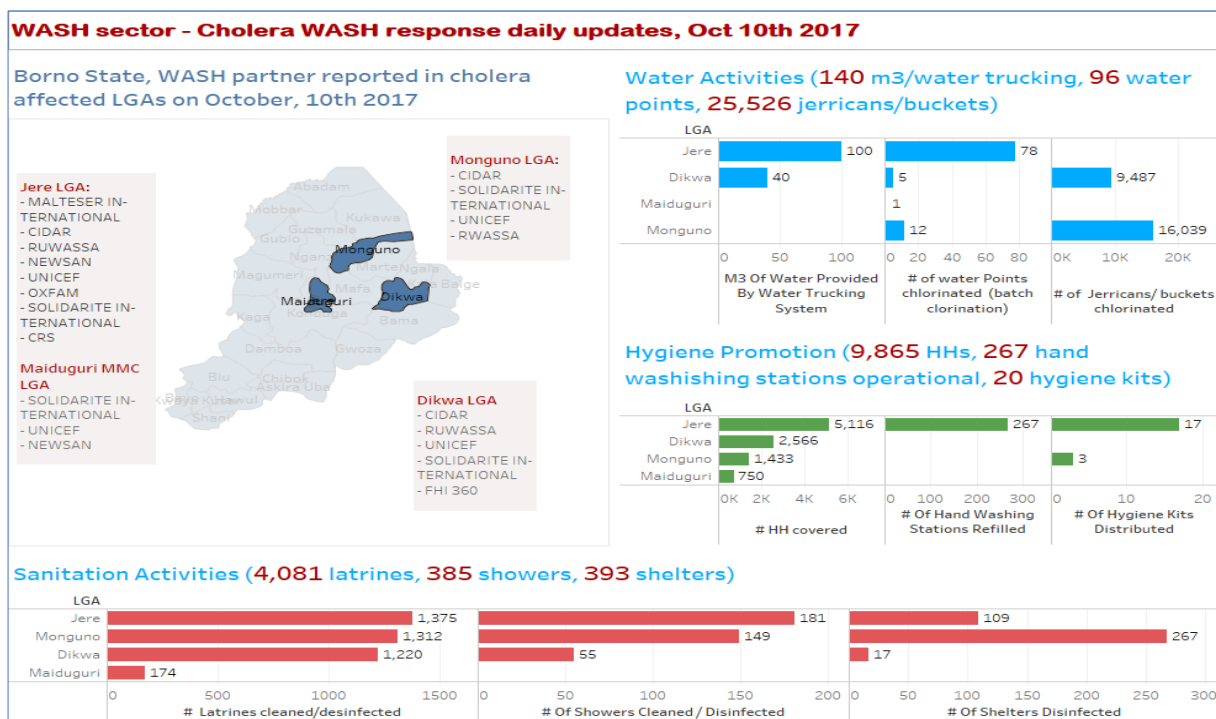
- MSF Spain to set up CTC in Mafa LGA
- 4 CTCs and 7 ORPs are fully functional across the state. **NB. 6 ORPs have been discontinued (5 in Dikwa and 1 in Monguno).**

3. WASH

Following guidance from surveillance data of 9th October, WASH sector partners conducted the following activities in the identified hotspots on 10th October:

- 2,975 HHs covered by Hygiene promotion and other WASH services in Jere, Maiduguri and Dikwa
- 272 latrines cleaned and disinfected in Jere
- 1,347 Jerry cans/buckets chlorinated in Dikwa
- 55 shelters disinfected in Jere and Maiduguri

WASH achievements in all areas:



4. Vaccination

- To Include Damasak in the microplan for OCV
- OCV campaign to hold in Rann, Bama, Banki, Pulka, Ngala and Damasak
- Need to intensify WASH activities in all the high risk areas for OCV
- To prioritize campaign depending on the quantity of OCV
- State and partners to agree on the operational cost

5. Risk Communication and Social Mobilization

- Custom House IDP sensitization continued , with CIDAR volunteers helping to open up drainages for water to flow away
- Door-to-door and street-to-street sensitisation at Shuwari 2
- Sensitization for traditional and religious leaders at Yerwa Clinic
- Women mobilisers at Bakassi IDP Camp demonstrated key household practices to female IDPs
- Sensitization of women at Muna Garage on how to wash vegetables with salt and water at Muna Garage IDP Camp
- Intensified sensitization and social mobilisation on cholera prevention , personal hygiene and environmental sanitation in all locations