

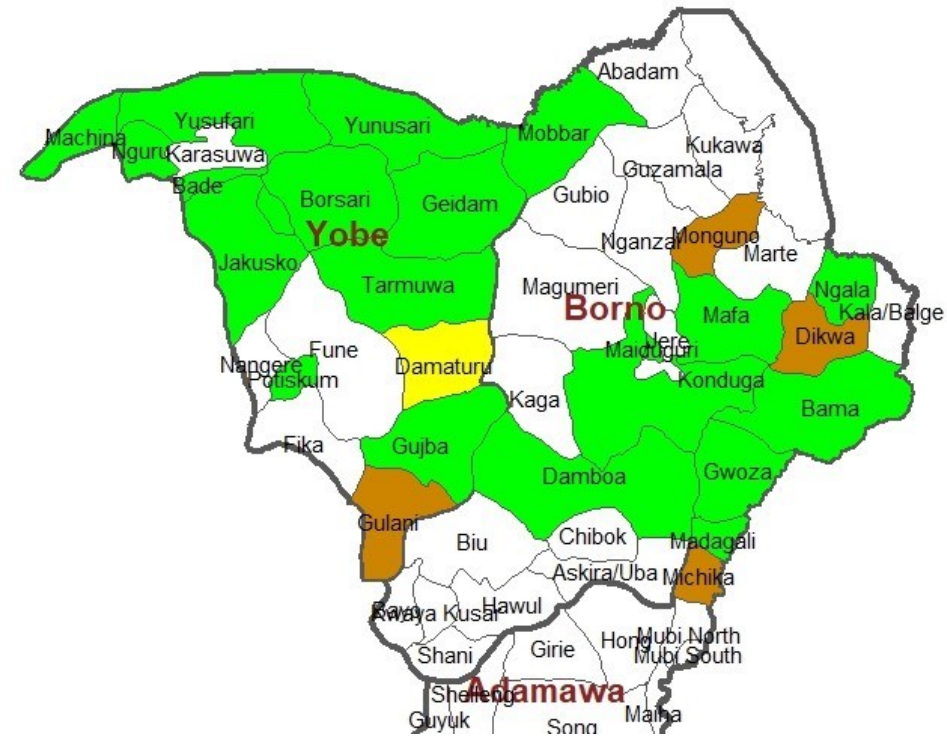


# NIGERIA

## Borno, Adamawa and Yobe States Market Monitoring

JUNE 2023 - ISSUE 73

### SMEB (100%) per Market Location in BAY States June 2023



■ Below Reference SMEB (< ₦47,327)    
 ■ Marginally Higher than Ref. SMEB (1% - 10%)    
 ■ Reference SMEB (₦47,327)

### Highlights

- The Naira depreciated by 1.35 percent at the parallel market as it closed at N770/\$1 on the 30th of June 2023 compared to N760/\$1 the previous month. When compared to its rate recorded at the same time last year, the Naira lost by 25 percentage points.
- Between May and June, the cost of the **70 percent Survival Minimum Expenditure Basket (SMEB)** for a family of five increased by 5 percent from 30,845 naira to 32,311 naira in Maiduguri and Jere in Borno State. Similarly, in Damaturu the SMEB increased by 4.2 percent from 32,755 naira in May to 33,130 naira in June. Please refer to *Table 3* for the SMEB values in other LGAs of the BAY states.
- Fuel prices are seen to experience a sharp increase (by almost 300 percent) since the removal of fuel subsidies. Fuel price is observed to be highest in Mobbar LGA of Borno State with an average of 1,100 naira per litre. While lowest prices were observed in Bursari and Gujba LGAs both in Yobe State with an average of 542 naira in June 2023. Please refer to *Table 5* for fuel prices in other LGAs of the BAY states.
- **The increase in SMEB is linked to a rise in the price of staples compared to the previous month**, resulting from increased fuel prices, increase in transportation cost, reduced market supplies and increased demand.

## Survival Minimum Expenditure Basket (SMEB)

WFP partners monitored a total of 41 markets across 26 LGAs in the June 2023 bulletin. Of these, two markets were in Adamawa, 24 markets in Borno (of which eight markets were in MMC and Jere) while the remaining fifteen markets in Yobe State.

Table 3 presents the SMEB values for various LGAs during June 2023, revealing **Monguno LGA in Borno State with the highest SMEB value (₦51,344)**, followed closely by Dikwa (₦49,020) and the continuous upward trend in Gulani LGA in Yobe State with SMEB value of ₦47,904 while Madagali LGA in Adamawa State had the lowest SMEB value (₦36,165).

TABLE 1: SMEB calculated for 5 households members in MMC & Jere markets for one month without the ₦2000 for Firewood

Food Item	gms/day/pp	Kc/day/pp	gms/HH/day	gms/HH/month	Kg/HH/month	Price/Kg-Naira(MPM)	Price/HH/month-Naira
Rice	150	540	750	22500	22.5	789	17,756.00
Maize	250	913	1250	37500	37.5	322	12,090.00
Beans	75	255	375	11250	11.25	560	6,300.00
Palm Oil	10	88	50	1500	1.5	1312	1,968.00
Groundnuts	15	85	75	2250	2.25	797	1,794.00
Sugar	10	39	50	1500	1.5	971	1,457.00
G/nut Oil/ Veg Oil	20	177	100	3000	3	1442	4,327.00
Salt	5	0	25	750	0.75	130	97.00
Onion	8	3	40	1200	1.2	308	369.00
<b>Total</b>		<b>2100</b>					<b>46,158.00</b>
<b>Cost of food basket at 70%</b>		<b>1470</b>					<b>32,310.60</b>
<b>Per Capita based on 70% transfer value</b>							<b>6,462.12</b>

TABLE 2: SMEB calculated for 5 households members in Damaturu markets for one month without the ₦2000 for Firewood

Food Item	gms/day/pp	Kc/day/pp	gms/HH/day	gms/HH/month	Kg/HH/month	Price/Kg-Naira(MPM)	Price/HH/month-Naira
Rice	150	540	750	22500	22.5	795	17,888.00
Maize	250	913	1250	37500	37.5	400	15,000.00
Beans	75	255	375	11250	11.25	445	5,006.00
Palm Oil	10	88	50	1500	1.5	1200	1,800.00
Groundnuts	15	85	75	2250	2.25	815	1,834.00
Sugar	10	39	50	1500	1.5	918	1,376.00
G/nut Oil/ Veg Oil	20	177	100	3000	3	1350	4,050.00
Salt	5	0	25	750	0.75	288	216.00
Onion	8	3	40	1200	1.2	131	158.00
<b>Total</b>		<b>2100</b>					<b>47,328.00</b>
<b>Cost of food basket at 70%</b>		<b>1470</b>					<b>33,129.60</b>
<b>Per Capita based on 70% transfer value</b>							<b>6,625.92</b>

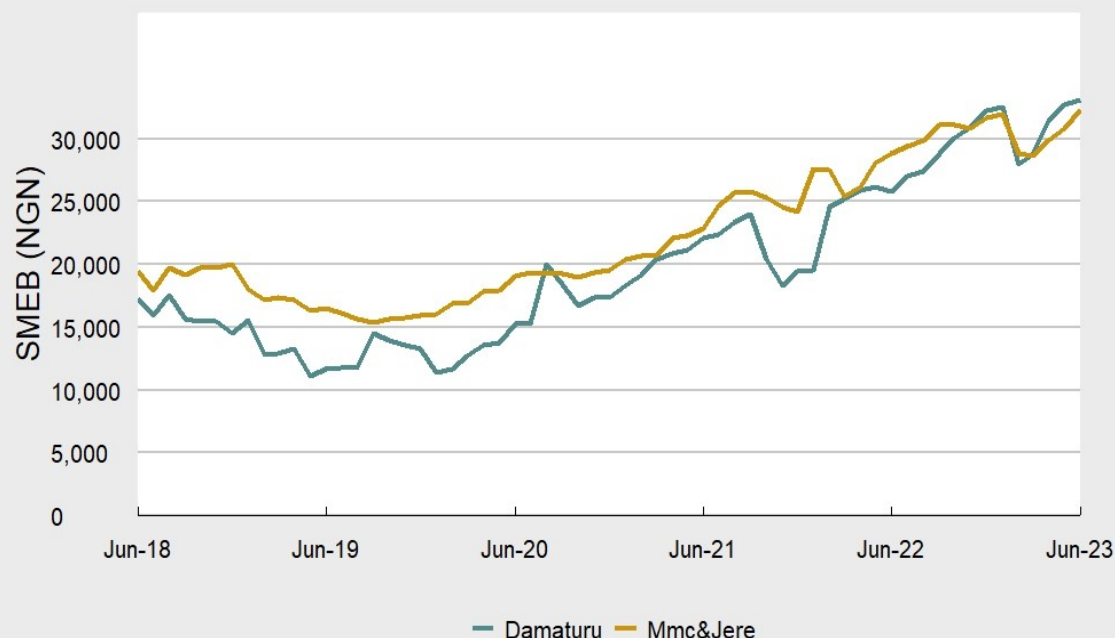
TABLE 3: SURVIVAL MINIMUM EXPENDITURE BASKET (SMEB) ACROSS WFP OPERATIONAL AREAS IN BAY STATES JUNE 2023

STATE	LGA	Reference Market	100% Total Food MEB for HH Size 5	100% Per Capita HH Size 5	70% Total Food MEB for HH Size 5	70% Per Capita HH Size 5
Adamawa	Madagali	Madagali	36,165	7,233	25,315	5,063
Adamawa	Michika	Michika	48,124	9,625	33,687	6,737
Borno	Bama	Bama	45,897	9,179	32,128	6,426
Borno	Damboa	Damboa	42,755	8,551	29,929	5,986
Borno	Dikwa	Dikwa	49,020	9,804	34,314	6,863
Borno	Gwoza	Gwoza Central	44,551	8,910	31,186	6,237
Borno	Konduga	Konduga	40,869	8,174	28,609	5,722
Borno	Mafa	Mafa	46,235	9,247	32,365	6,473
Borno	Mmc & Jere		46,158	9,232	32,311	6,462
Borno	Mobbar	Damassack (CBM)	41,513	8,303	29,059	5,812
Borno	Moguno	Monguno	51,344	10,269	35,941	7,188
Borno	Ngala	Gamboru	42,865	8,573	30,006	6,001
Yobe	Bade	Bade (Gashua)	43,164	8,633	30,215	6,043
Yobe	Bursari	Dapchi	43,312	8,662	30,319	6,064
Yobe	Damaturu	Bayantasha	47,327	9,465	33,129	6,626
Yobe	Geidam	Geidam	46,529	9,306	32,570	6,514
Yobe	Gujba	Gujba (Buni Yadi)	43,885	8,777	30,719	6,144
Yobe	Gulani	Gulani (Tetta)	47,904	9,581	33,533	6,707
Yobe	Jakusko	Jakusko	43,823	8,764	30,676	6,135
Yobe	Machina	Machina Central	42,190	8,438	29,533	5,907
Yobe	Nguru	Nguru Central Market	40,515	8,103	28,361	5,672
Yobe	Potiskum	Potiskum	38,508	7,702	26,955	5,391
Yobe	Tarmuwa	Babbangida market	47,049	9,410	32,934	6,587
Yobe	Yunusari	Yunusari	44,191	8,838	30,934	6,187
Yobe	Yusufari	Yusufari	42,243	8,449	29,570	5,914



### Trend in the Cost of 70% SMEB - MMC/Jere and Damaturu

June 2018 to June 2023



source: WFP, RAM 2023

Table 4: June 2023 70% SMEB Comparison

	Current	MoM	3 Months ago	Year on Year	Same period 5 years ago	5 years average
	Jun-23	May-23	Mar-23	Jun-22	Jun-18	5 years ago
<b>SMEB Values</b>						
MMC/Jere	₦ 32,311	₦ 30,845	₦ 28,613	₦ 28,838	₦ 19,454	₦ 22,331
Damaturu	₦ 33,130	₦ 32,755	₦ 28,712	₦ 25,753	₦ 17,308	₦ 19,865
<b>Percentage Change</b>						
MMC/Jere		5	13	12	66	45
Damaturu		1	15	29	91	67

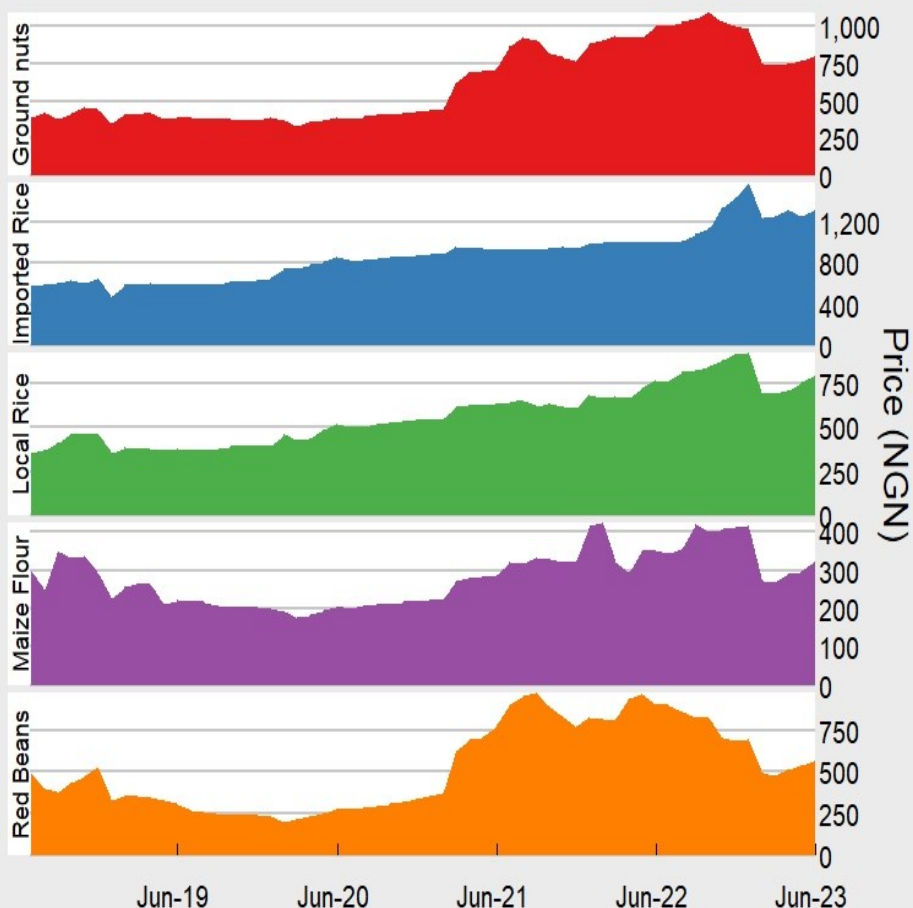
- SMEB value for MMC/Jere increased by five percent compared to the previous month, thirteen percent when compared to three months ago, and twelve percent compared to the same time last year.
- On a month-on-month basis, MMC and Jere experienced a higher percentage increase in the cost of SMEB compared to Damaturu LGA.
- In Damaturu, the SMEB value increased by one percent compared to the previous month, fifteen percent compared to three months ago and 29 percent compared to the same time year.
- The steady increase in the cost of SMEB across MMC/Jere and Damaturu LGAs affects households' access to food by sapping the purchasing power of households who spend a larger proportion of their disposable income and food assistance on meeting food needs.
- The removal of fuel subsidies by the Government has led to a sharp increase in fuel prices (by about 300 percent) compared to the previous month. Mobbar LGA in Borno State had the highest fuel price of ₦1,100 per litre.

Table 5: Fuel Prices by LGAs

State	Lga	Fuel Price (Naira)
Adamawa	Madagali	671
Adamawa	Michika	552
Borno	Mmc & Jere	565
Borno	Bama	820
Borno	Damboa	580
Borno	Dikwa	762
Borno	Gwoza	640
Borno	Konduga	564
Borno	Mafa	563
Borno	Mobbar	1100
Borno	Moguno	1067
Borno	Ngala	805
Yobe	Bade	569
Yobe	Bursari	542
Yobe	Damaturu	562
Yobe	Geidam	587
Yobe	Gujba	542
Yobe	Gulani	607
Yobe	Jakusko	570
Yobe	Machina	800
Yobe	Nguru	549
Yobe	Potiskum	545
Yobe	Tarmuwa	550
Yobe	Yunusari	558
Yobe	Yusufari	578

## Key Food Price Trends for MMC&Jere (Borno)

June 2018 to June 2023



■ Ground nuts ■ Imported Rice ■ Local Rice ■ Maize Flour ■ Red Beans

source: WFP, RAM 2023

- In MMC and Jere markets, a marginal increase (**as high as 9%**) in the prices of key staple food commodities was experienced on a month-on-month basis. The prices of Maize, and Groundnuts in MMC and Jere markets remained stable.
- As compared to three months ago, the prices of Maize and Red beans in MMC and Jere markets are seen to experience a substantial increase **as high as 21 percent**.
- In Damaturu market, an upward trend is seen in the price of Maize is seen with a marginal increase of six percent when compared to the previous month. The prices of Local rice, Groundnuts and Imported rice remained stable.
- Despite the increase in the price of Red beans in Damaturu market as compared to the previous month, it is important to note that when compared to its price three months ago, Red beans is seen to experience a **35 percentage point increase**.

Table 6: Key Staple Food Prices in MMC/Jere and Damaturu

Markets	Food Item	Variation (%) compared to last month	Variation (%) compared to 3 months	Variation (%) compared to same period last year	Markets	Food Item	Variation (%) compared to last month	Variation (%) compared to 3 months	Variation (%) compared to same period last year
MMC and Jere	Maize	↔ 9%	↑ 21%	↓ -8%	Damaturu	Maize	↔ 6%	↑ 31%	↔ 10%
	Red beans	↔ 4%	↑ 18%	↓ -38%		Red beans	↓ -7%	↑ 35%	↓ -36%
	Rice (Imported)	↔ 5%	↔ 6%	↑ 32%		Rice (Imported)	↔ 2%	↓ -26%	↓ -8%
	Rice (Local)	↔ 4%	↔ 14%	↔ 3%		Rice (Local)	↔ 0%	↔ 7%	↔ 14%
	Groundnuts	↔ 4%	↔ 8%	↓ -20%		Groundnuts	↔ 2%	↑ 22%	↓ -9%
	Decrease								
	Relative Stability								
	Marginal Increase								
	Substantial Increase								

Contact: Nsikak Udoh, nsikak.udoh@wfp.org

WFP Nigeria Research, Assessments and M&E unit, Nigeria

<https://dataviz.vam.wfp.org>