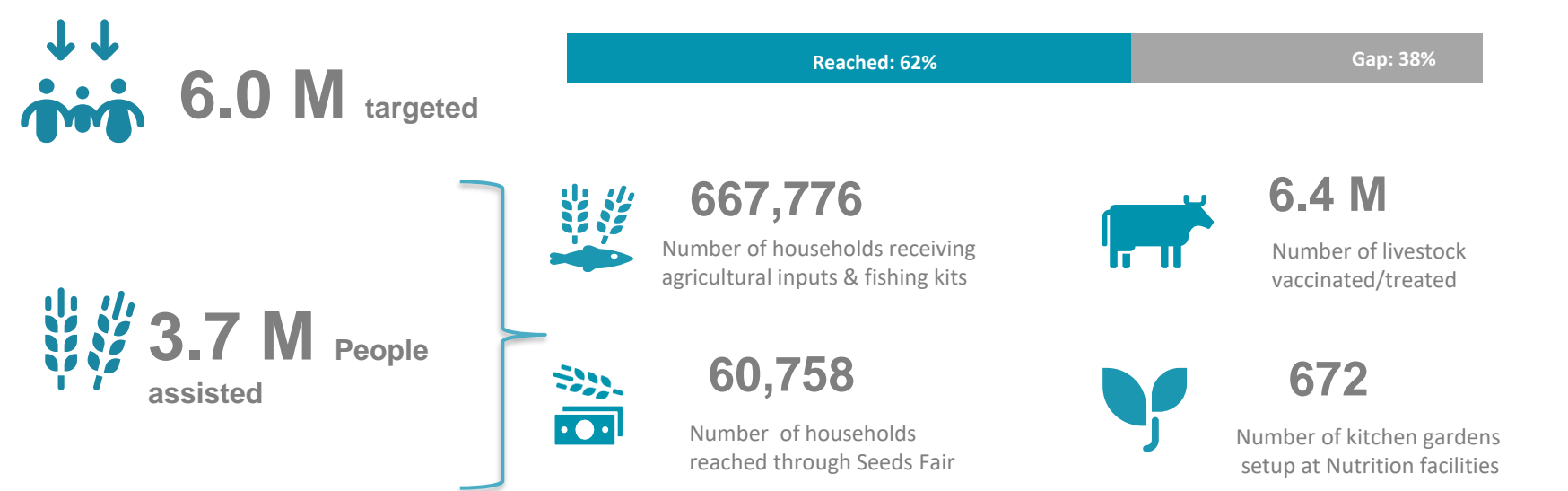
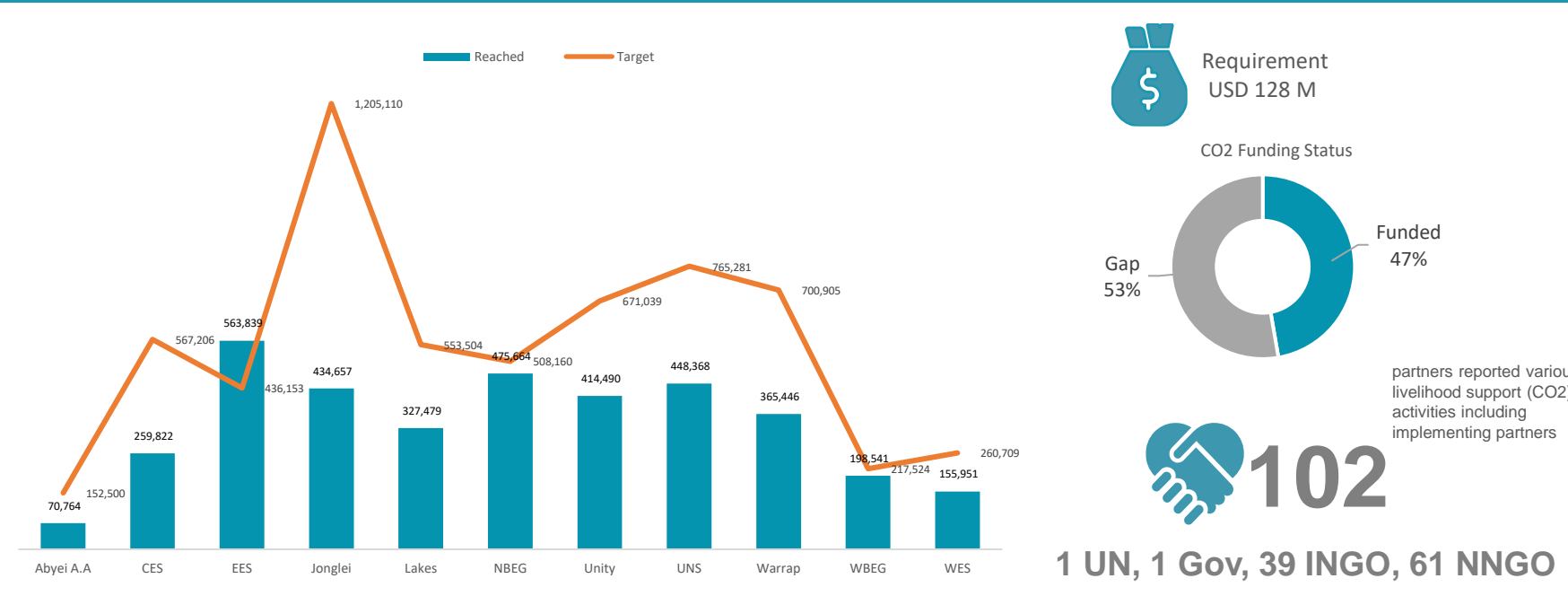


### LIVELIHOOD SUPPORT RESPONSE KEY FACTS & FIGURES

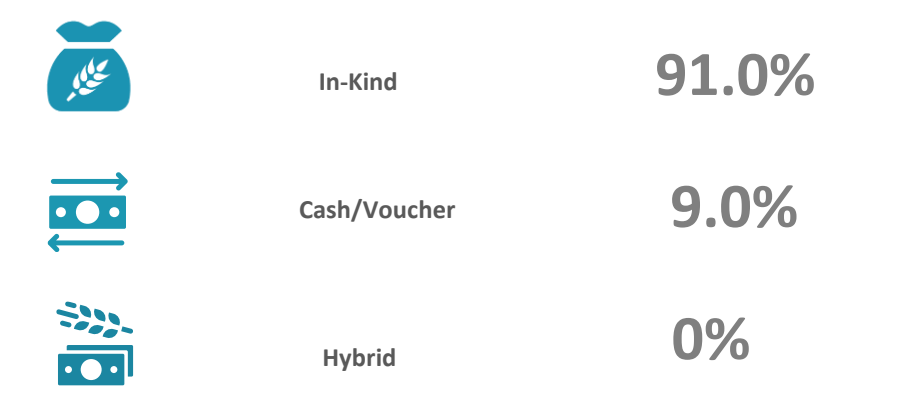
**FSL Cluster Objective 2 (CO2): Enhance and sustain emergency food production through complementary vegetable and crop livelihood inputs, fishing and livestock support in IPC 3, 4 and 5.**



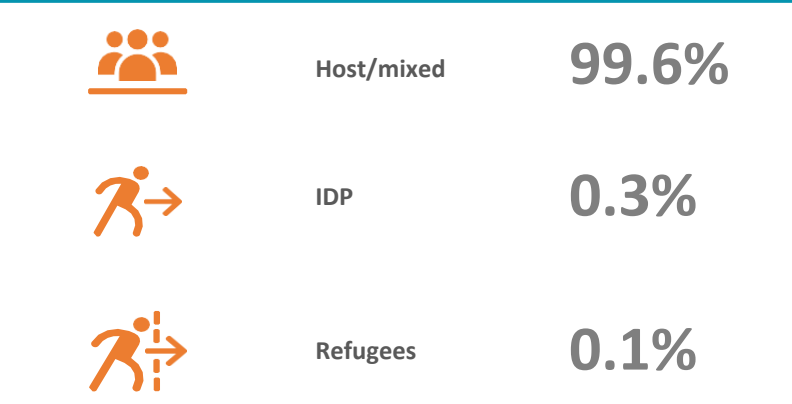
### RESPONSE BY STATE (Targeted Vs Reached)



### RESPONSE BY MODALITY

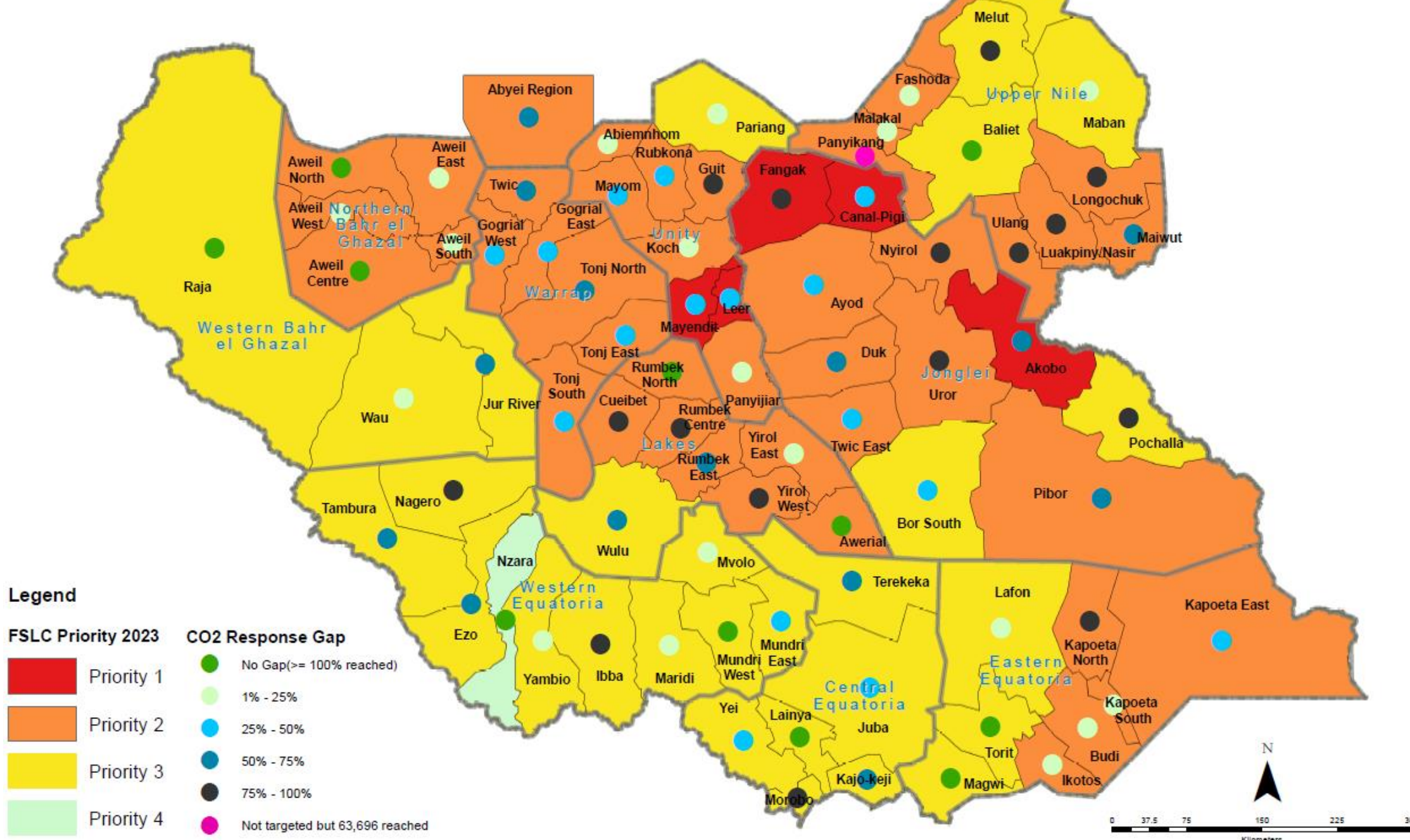


### BENEFICIARY TYPE

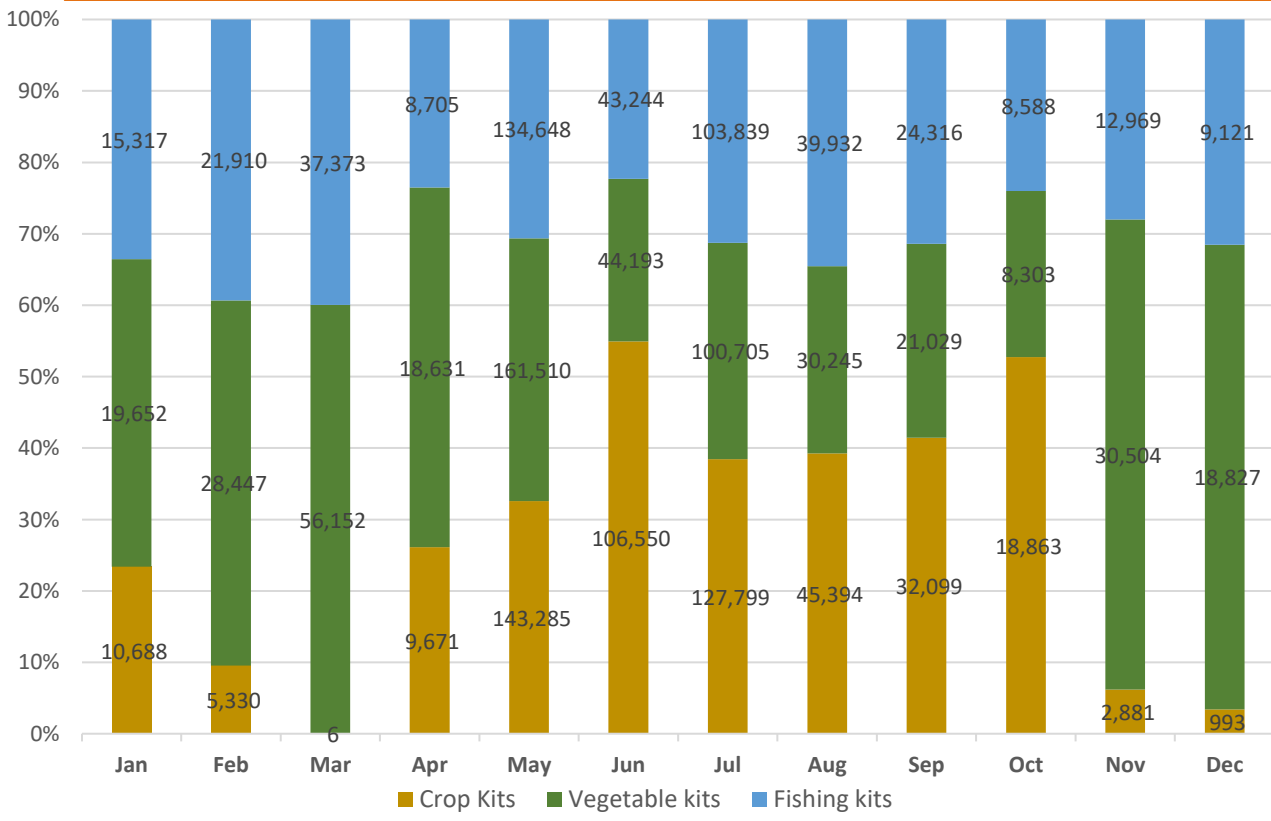


### FSLC HRP 2023 prioritization and Livelihood support (CO2) gaps as of December 2023

**Note:**  
The gap is calculated as the people targeted (All IPC 4+ population and 60% of IPC 3) minus people reached with livelihood support (Crop, Vegetable and fishing kits).



### LIVELIHOOD KITS DISTRIBUTED BY MONTH



### OPERATIONAL PARTNERS BY STATE – CO2

Abyei A.A	FAO
CES	FAO, IRC, IRW, NPA, NRC, PH, SAADO, SDMIC, VSF-G, VSF-S, WVI, GEWLP, MI, FAA, AVSI, Tearfund, Caritas-S, OFAO, SLDA, RWD, SPEDP
EES	AVSI, Caritas L, Caritas S, CDSS, CORDAID, CRS, CRSF, FAO, IRW, RAAH, VSF-G, WHH, SCI, GEWLP, LWF, CMD, FSDA, GA, SW
Jonglei	AAH, ACRA, ALO, CMD, CRS, CRSF, FAO, NPA, NRC, VSF-G, ForAfrika, VSF-S, CAO, SLDA, ARSS, HFO, OXFAM, FAA, ADA, HCI, Tearfund, ASIMO, AHP, CARE, DRC, NRDC, WART, WR
Lakes	CINA, HELP, VSF-G, FAO, NPA, ILIDO, CTP, HAGI, CRS, CAFOD, DPNEF
NBEG	CWW, FAO, ForAfrika, HRY, NRC, SAADO, VSF-S, AAH, WVI, KUCDA, FLDA, WHH, CAWDC, RCDI, SSGID
Unity	CWW, FAO, IRC, NRC, SP, VSF-S, WHH, MC, LU, HAD, HACO, RCDI, WART, AFAA, CH, CIDA, Cfh, DRC, WR
UNS	ACRA, AHC, FAO, RuCAPD, SI, VSF-G, VSF-S, WVI, CMD, NRDC, RI, ADA, SAADO, ACTED, GTA, NRDO, SCO, SP, SSSA
Warrap	AAH, FAO, IRW, SCI, ZOADORCAS, NRC, WVI, ADRA, CTP, HARD, TOCH, LCAD, MADA, CaritasL, IWIN, SAADO, SSGID, SPEDP
WBEG	ASCO, FAO, JI, NRC, ZOADORCAS, MI, PCO, ACTED, HCI, WCHO, IRW, COER, MoA, RESAD, SSGID, SEM, SPEDP
WES	CORDAID, WVI, FAO, STO, RESAD, SEM, REDO