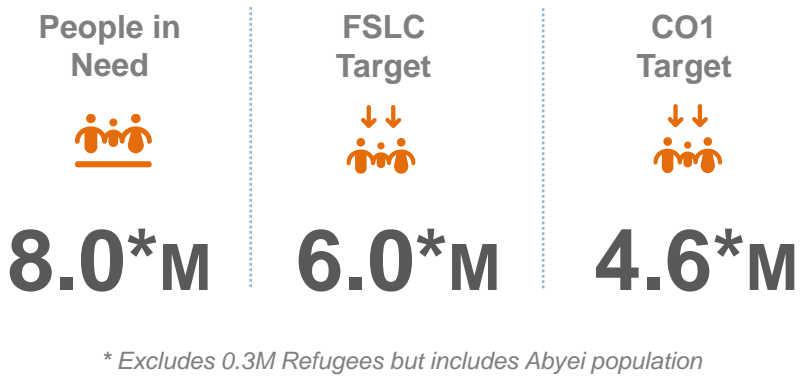
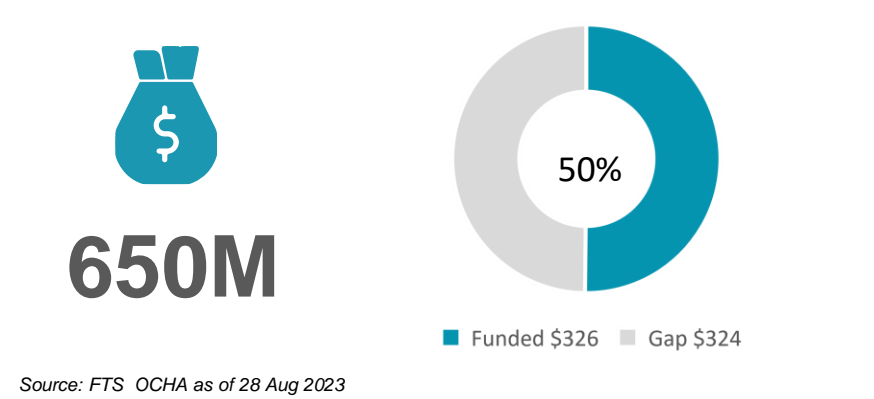


HRP 2023 TARGET

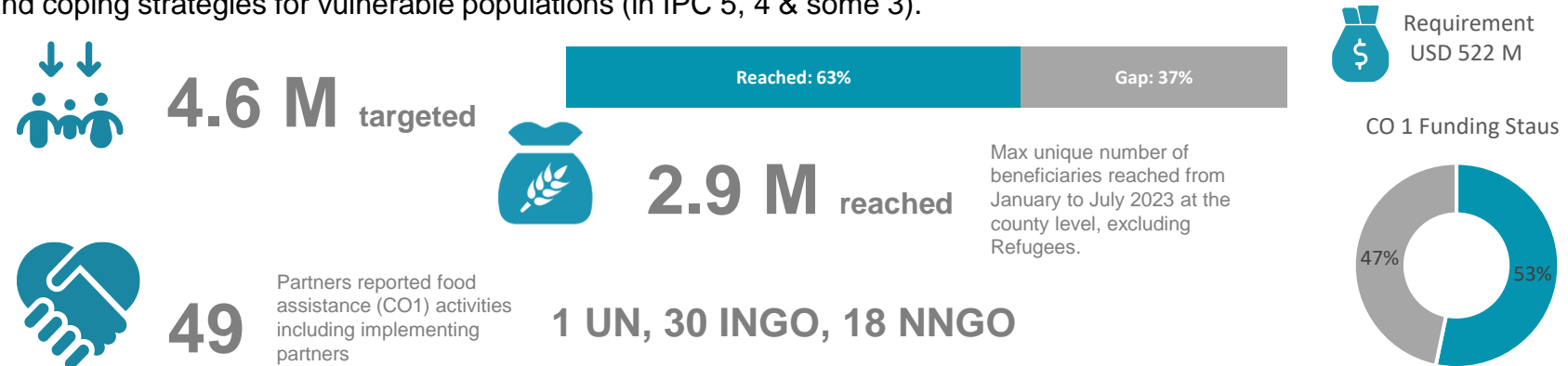


HRP 2023 FUNDING REQUIREMENT (USD)

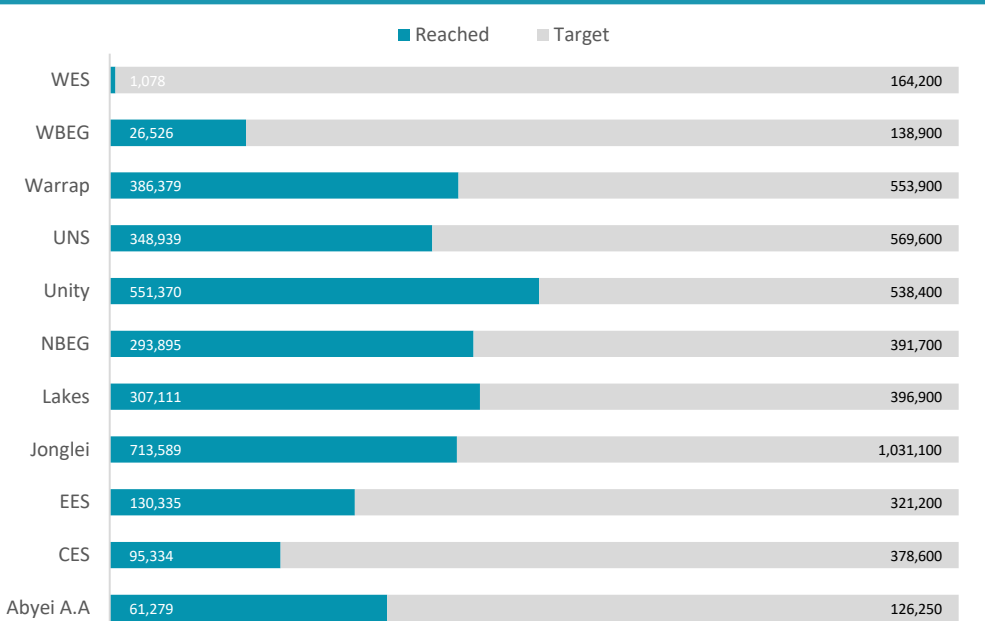


FOOD ASSISTANCE RESPONSE KEY FACTS & FIGURES

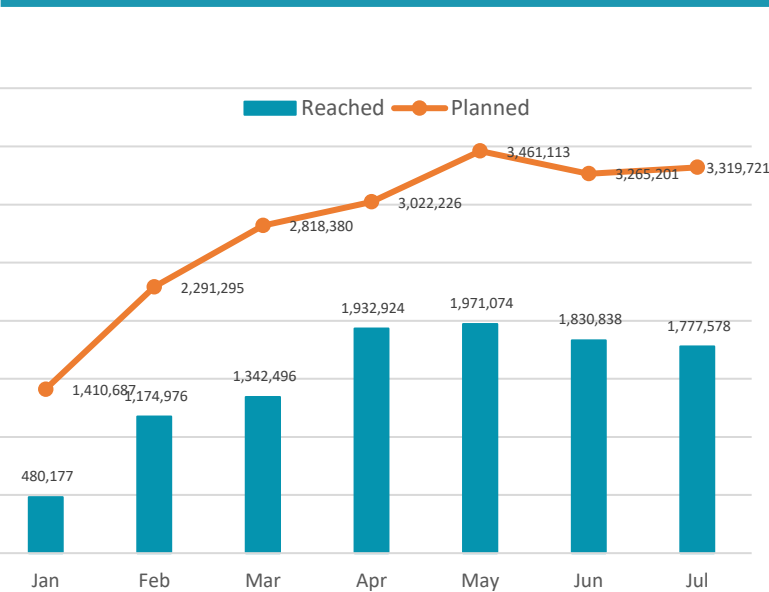
FSL Cluster Objective 1 (CO1): Provide food assistance to prevent famine and improve food consumption, dietary diversity and coping strategies for vulnerable populations (in IPC 5, 4 & some 3).



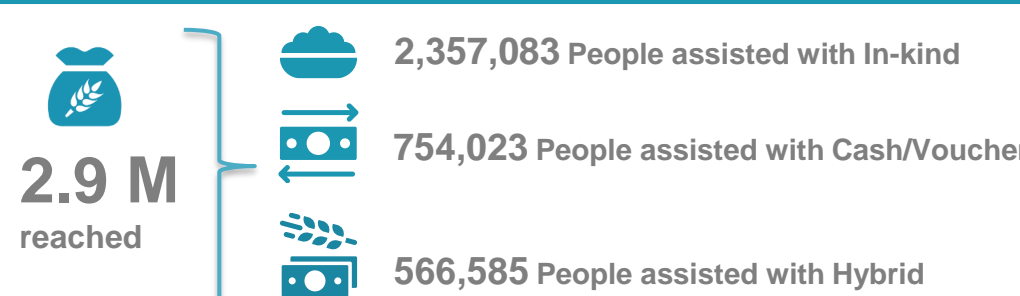
RESPONSE BY STATE (Targeted Vs Reached)



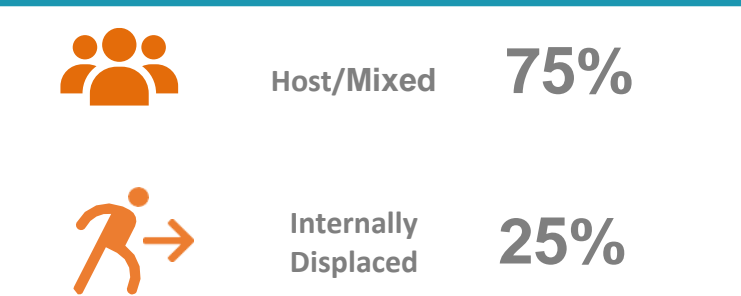
RESPONSE BY MONTH



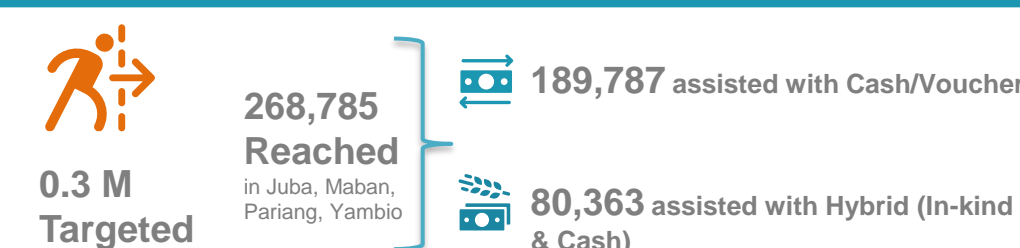
RESPONSE BY MODALITY (The overall total for the three modalities is higher than the total reached as some of the HHs are covered by multiple modalities)



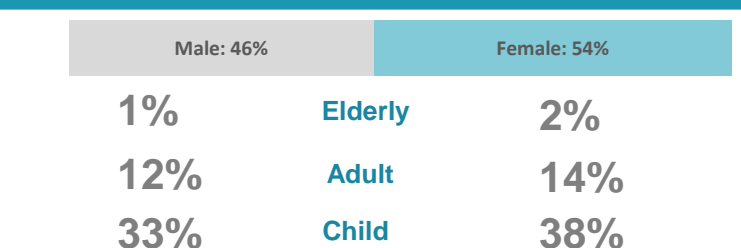
BENEFICIARY TYPE



REFUGEES RESPONSE

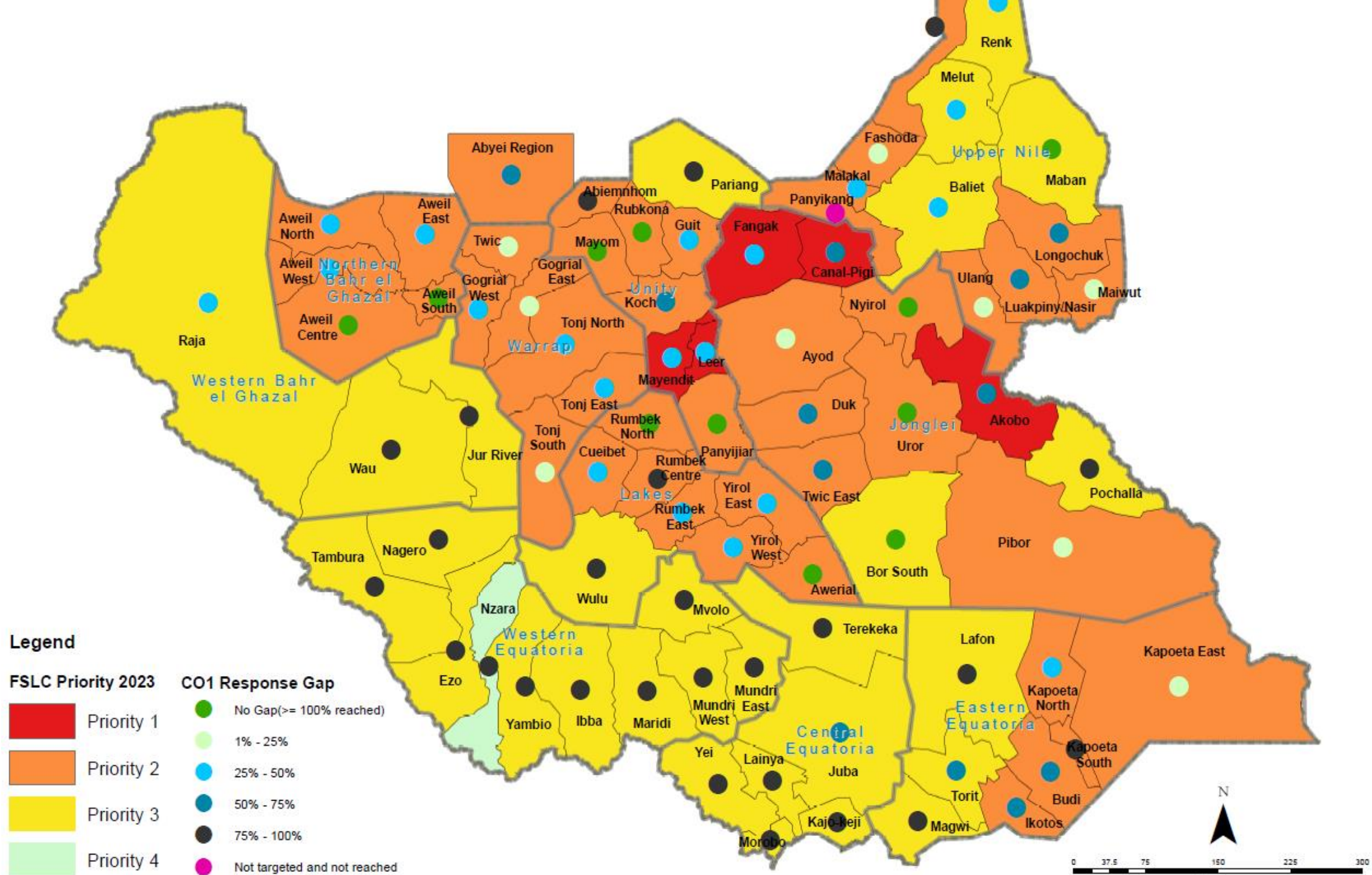


GENDER / AGE



FSLC HRP 2023 prioritization and food assistance (CO1) gaps as of July 2023

Note: The gap is calculated as the people targeted in HRP 2023 minus people reached as of July 2023.



CONTEXT UPDATE

IPC Classification In the lean season projection period of April to July 2023, an estimated 7.8 million people (this figure excludes Abyei) will likely face Crisis (IPC Phase 3) or worse acute food insecurity (63% of the population), with 43,000 people likely to be in Catastrophe (IPC Phase 5) acute food insecurity in Akobo, Canal/Pigi and Fangak counties of Jonglei State; and Leer and Mayendit counties of Unity State. During this period, an estimated 2.90 million people are likely to face Emergency (IPC Phase 4) acute food insecurity in South Sudan. [Click here](#) to read more.

Inter-sectoral needs severity classification as of July 2023: According to the latest Needs Analysis Working Group (NAWG) classification, needs were highest in the counties of Akobo, Fangak, Canal/Pigi, Leer, Mayendit, all of which have pockets of IPC Phase 5 populations in April to July period. In addition, Renk, Malakal and Rubkona are also classed as experiencing extreme inter-sectoral needs, due to existing underlying vulnerabilities being compounded by the protected impacts of the Sudan displacement crisis, with all three locations becoming important transit hubs, and areas of final settlement.

OPERATIONAL PARTNERS BY STATE - CO1

State	Operational Partners
Abyei A.A	WFP, ACAD
CES	WFP, ForAfrika, Malteser, SAADO, WVI, ACROSS, IRW, NPA, AAHI
EES	WFP, ADRA, NPA, PLAN, SCI, CODAID, OPRD, AfH, IRW, CRS, Caritas-L, WFP, CRS, FCA, GRDA, HFO, LWF, NPA, NRC, OXFAM, APA, ADA, VSF-G, PLAN, AAH
Jonglei	WFP, NPA, PLAN
Lakes	WFP, NPA, PLAN
NBEG	WFP, NRC, VSF-S, WHH, WVI, AAH, CWW, FLDA, ForAfrika
Unity	WFP, WHH, SP, NRC, IRC, DRC, RCDI, MC, AAHI
UNS	WFP, WVI, NRDC, CMD, SP, GOAL, RI, ACTED, ADA, DCA
Warrap	WFP, ForAfrika, WVI, SAADO, NRC, ACAD, CTP, ADRA, TOCH, HARD,
WBEG	WFP, IRW, Malteser, NRC, ZOA Dorcas, SPEDP, ACTED,
WES	WFP, WVI, STO