



Food Security & Livelihoods Coordination Meeting

25 January 2021

Cox's Bazar, Bangladesh



**COX'S BAZAR
FOOD SECURITY
SECTOR**

Photo: ISCG / Saikat Mojumdur

Action Points

COVID 19 Restriction

[GoB \(Cabinet Division\) Circular on Restrictions of overall activities/movement](#) | Unofficial Translation | Latest Cabinet Division Circular and RRRC letter | 21, 23 and 25 January 2022

FSS JRP 2022 Update

- JRP process is ongoing, Comments from ISCG, RRRC and Donors comments were incorporated in FSS JRP 2022 and submitted to MOFA.

Next Steps: 25 Jan – MOFA

- Dhaka JRP Launch – End of February

28 organizations (54 individuals) in attendance ;		
AMAN	ICCO	Shushilan
BRAC	IOM	SS
CAB	ISCG	UNHCR
CGIAR	IVY Japan	VSO
CODEC	NGO-Platform	WFP
CWW	PIB	WR
DRC	PC	WVI
FAO	Prantic	YPSA
GIZ	RIC	
Helvetas	SCI	

Partners Reusable Mask Distribution Status

- FSS to collect reusable Mask production capacity by the partners and stock status **by 31 January 2022**
- Partners to provide status on Reusable mask production capacity and stock **by 31 January 2022**

28 organizations (54 individuals) in attendance ;		
AMAN	ICCO	Shushilan
BRAC	IOM	SS
CAB	ISCG	UNHCR
CGIAR	IVY Japan	VSO
CODEC	NGO-Platform	WFP
CWW	PIB	WR
DRC	PC	WVI
FAO	Prantic	YPSA
GIZ	RIC	
Helvetas	SCI	

Action Points

Country Cluster Performance Monitoring Survey (CCPM):

Partners to fill and submit Country Cluster Performance Monitoring Survey (CCPM) **by 4th February 2022**

Only one survey questionnaire should be submitted per partner organization

The survey can be accessed through the following link:

https://survey.sjc1.qualtrics.com/jfe/preview/SV_38Er3silxIF3j94?Q_CHL=preview&Q_SurveyVersionID=current

28 organizations (54 individuals) in attendance ;		
AMAN	ICCO	Shushilan
BRAC	IOM	SS
CAB	ISCG	UNHCR
CGIAR	IVY Japan	VSO
CODEC	NGO-Platform	WFP
CWW	PIB	WR
DRC	PC	WVI
FAO	Prantic	YPSA
GIZ	RIC	
Helvetas	SCI	

Action Points

Livestock

- FSS to incorporate and finalize livestock activities in FSS 5W response tracker, service mapping template and dashboard for the livestock initiatives to be shared with FSS partners **by mid-February 2022**

FSS monthly site visit

- FSS to organize partners activities visit on Aggregation Centers and Farmers Groups on 9 February 2022
- Interested partner colleagues to register for joining FSS site visit team through this [link](#) by 3 February 2022

28 organizations (54 individuals) in attendance ;		
AMAN	ICCO	Shushilan
BRAC	IOM	SS
CAB	ISCG	UNHCR
CGIAR	IVY Japan	VSO
CODEC	NGO- Platform	WFP
CWW	PIB	WR
DRC	PC	WVI
FAO	Prantic	YPSA
GIZ	RIC	
Helvetas	SCI	

Action Points

FSS partners capacity building Initiatives

- FSS to develop partners training plan and share with FSS partners **by 3 February 2022**
- FSS to organize partners' site visit follow-up workshop **on 14 February 2022**

FSS Information Management

- FSS to share latest FSS 5W Response tracker, monthly and interactive dashboard **by 31 January 2022**
- Partners to provide NID to FSS for checking duplication ID, Deduplication exercise [template](#) with 2022 target beneficiaries' NID - see [SOP and concept note](#)

28 organizations (54 individuals) in attendance ;		
AMAN	ICCO	Shushilan
BRAC	IOM	SS
CAB	ISCG	UNHCR
CGIAR	IVY Japan	VSO
CODEC	NGO- Platform	WFP
CWW	PIB	WR
DRC	PC	WVI
FAO	Prantic	YPSA
GIZ	RIC	
Helvetas	SCI	

Action Points

FSS Reporting

- [5W FSS Response Tracker](#) | 6 January 2022
- [Template for Volunteer and CfW Information, September 2021](#) | request for action by 10 January 2022

FSS upcoming events

- Next SDTWG Meeting | 31 January 2022 | 3:00 – 4:00 pm
- EETWG monthly meeting | 1 February 2022 | 15:30-17:00
- FSS Bi - Weekly Coordination Meeting | Tuesday 8 February 2022 from 11:00 – 12:30
- Livestock Partners Monthly Meeting | Wednesday, 23 February 2022

28 organizations (54 individuals) in attendance ;		
AMAN	ICCO	Shushilan
BRAC	IOM	SS
CAB	ISCG	UNHCR
CGIAR	IVY Japan	VSO
CODEC	NGO-Platform	WFP
CWW	PIB	WR
DRC	PC	WVI
FAO	Prantic	YPSA
GIZ	RIC	
Helvetas	SCI	

Agenda



Meeting agenda

- FSS Updates
 - JRP update 2022
 - Fire updates
 - IM
 - Livelihood/Self-Reliance
- Presentations:
 - Digital Partnerships in humanitarian assistance (WFP)
 - Vitamin-A Enriched Orange Fleshed Sweet Potato for Smallholders' Nutrition and Income: A Preliminary Results from the Farmers' Practices in Cox's Bazar (FAO/CIP)
- Partners' Updates
- AOB

FSS updates

➤ Partners to adhere:

[GoB \(Cabinet Division\) Circular on Restrictions of overall activities/movement | Unofficial Translation](#) | on 23 January 2022

Restrictions:

- All government/semi-government/autonomous/private offices should be run with half number of officers/employees following hygiene rules. Other officers/employees should stay in their respective duty station and perform their duties virtually (through e-nothi, e-tender, e-mail SMS, WhatsApp and other platforms).
- The Bangladesh Supreme Court will issue necessary directions to the court
- Bangladesh Bank and Financial Institutions Division will provide necessary instructions regarding banks/insurance and financial institutions.

➤ Partners to adhere:

[GoB \(Cabinet Division\) Circular on Restrictions of overall activities/movement | Unofficial Translation](#) | on 21 January 2022

Restrictions:

- All schools, colleges and equivalent educational institutions will remain close from 21 January 2022 to 6 February 2022
- University will take similar action in their respective ground/field
- No more than 100 people can attend any social/political/religious/state events
- Officers/Employee of government/non-government officers, industries must receive vaccination Certificate. The concern authorities bear the responsibility in this regard.

Restrictions:

- Proper hygiene including the use of masks must be followed in all public gatherings in market/shopping mall, mosque, bus stand, Launch station, railway station etc and
 - The local administration and law enforcement agencies will monitor the issues/matter
- Government Information | COVID-19 Vaccination Booster Doses | [letter 2501](#) | [Unofficial Translation](#) | 26 December 2021

Reusable Mask Distribution (Round 3)



Health Sector is considering 3rd round of reusable masks distribution.

To cover all households (192 908) with 8 masks (6 adult size and 2 child size) = 1 543 264 masks are needed.

FSS is checking production capacity of partners and available stock.

Available stock: 130 000 masks (FSS) + 126 500 (WHO)

Production capacity FSS partners: 150 000 masks/ month

Please, report your production capacity to: Raiyan Hossain (hossain.raihan@brac.net, +8801844559309).

Please, do not start production until distribution is officially confirmed.

Country Cluster Performance Monitoring Survey (CCPM)



Country Cluster Performance Monitoring Survey | **Deadline: 4 February 2022**

The Country Cluster Performance Monitoring (CCPM) 2021 survey has been launched to enable Food Security Cluster/Sector partners to evaluate to what extent their Cluster/Sector has achieved its core functions between the period of January-December 2021.

Survey Link: [Here](#)

- It should take no longer than 10 minutes to complete the survey.
- Please choose “**Bangladesh – COX’S BAZAR**” under Country and choose “**Sub-National**” under level of coordination structure.
- **Deadline | 4th February 2022**

FSS JRP - 2022 updates

- JRP process is ongoing:
- ✓ Comments from ISCG, RRRC and Donors comments were incorporated
- ✓ 25 Jan – MOFA, Dhaka
- ✓ JRP Launch – End of February

Fire Updates

Fire in Camp 5 | 18 January



UNHCR reported a fire broke out in Camp 5, Blocks B and D, in the early hours of 18 January 2022.

All affected HHs received hot meals and fortified biscuits from WFP/YPSA

Hot meals assistance:

Total HH: 26

Individuals : 135

Emergency hot meals distribution was completed on 24 January 2022.

Fire in Camp 16 | 9 January

IOM reported a large fire in Camp 16 (Potibonia/Bagghona) of the Cox's Bazar Rohingya camps on Sunday (9 January 2022) at 5pm.

1,988 individuals affected

358 shelters destroyed

44 partially damaged

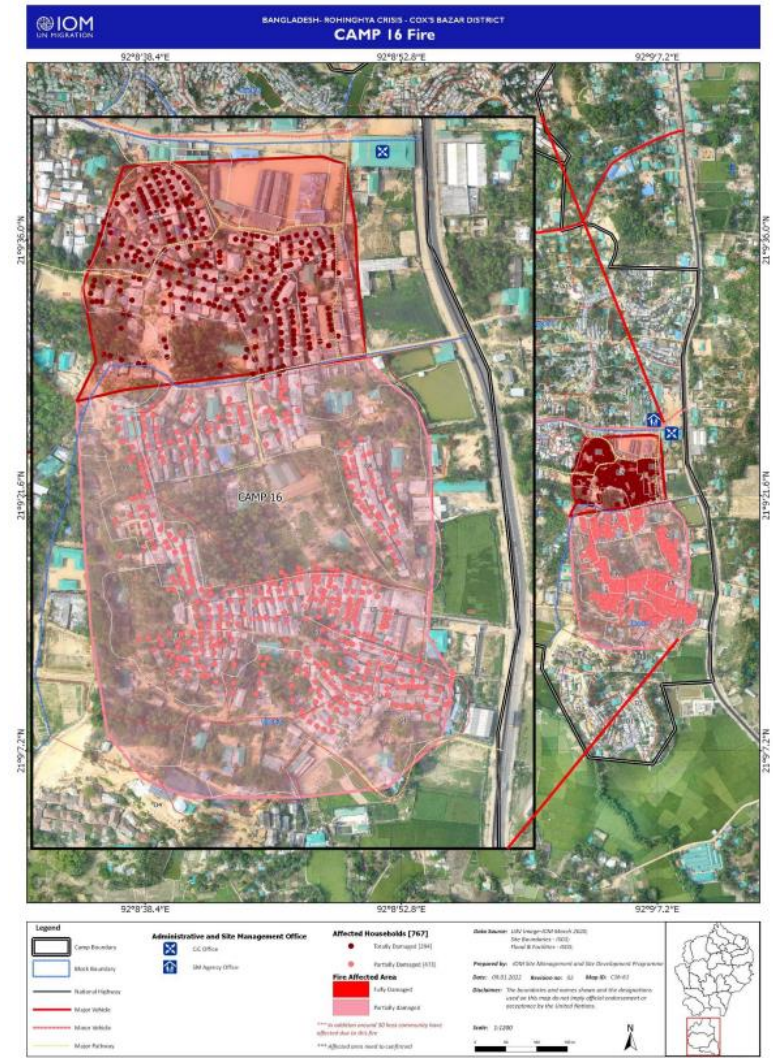
229 facilities damaged (2 learning centers, 1 distribution point, 188 WASH facilities)

FSS partners responded immediately to the needs of populations affected by providing fortified biscuits and hot meals.

MSI distributed breakfast,

*WFP/RIC/WVI distributed fortified biscuits, lunch and dinner

Emergency hot meals distribution was completed on 14 January 2022.



[IOM map](#) as per 9 Jan 2022 shared within the first 3 hours of the fire

Information Management Update

- Updates to 5Ws upcoming
 - Adding activities: **Livestock** and **Climate Smart Agriculture**
 - Slight formatting change – aligning with ISCG and gFSC
 - Effective **1 Feb** – starting with reporting month January of 2022
- December Static Dashboard shared 24 January, Interactive dashboard being updated
- Aggregation Centre/Farmer Group mapping – received data from partners – map to be produced & shared next week (30 Jan)
- **deduplication exercise to continue-** template to analyze who receives what – please fill in the [template](#) with 2022 target beneficiaries' NID - see [SOP and concept note](#)
- FSS will continue 5W and IM relevant training to FSS partners
- Training Needs Assessment

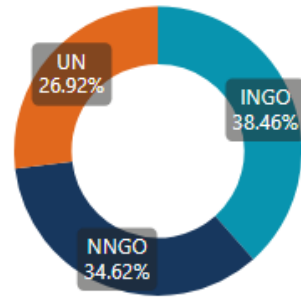
FSS Training needs survey

Training Needs Assessment Overview

Number of responses

26

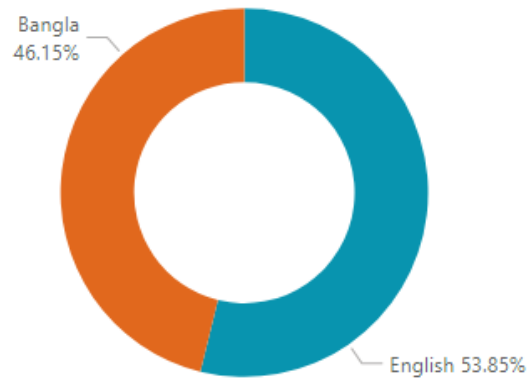
Organization Types



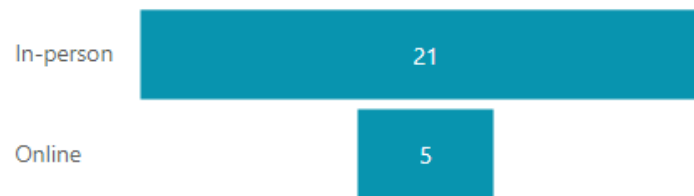
Most Interested Training Topics

Most Interested Training Topics	%	Relevant Designation
Emergency Preparedness and Response	92.31	DRR
Integrating Nutrition into Food Security and Livelihoods	84.62	Cross Cutting
Report Writing	84.62	Reporting
Writing Project Proposals	80.77	Reporting
Climate Smart Agriculture	76.92	DRR/Livelihood
Accountability to Affected Populations (AAP)	73.08	Cross Cutting
IM - Microsoft Excel	73.08	IM/MEAL
Monitoring Evaluation Accountability and Learning (MEAL)	73.08	IM/MEAL

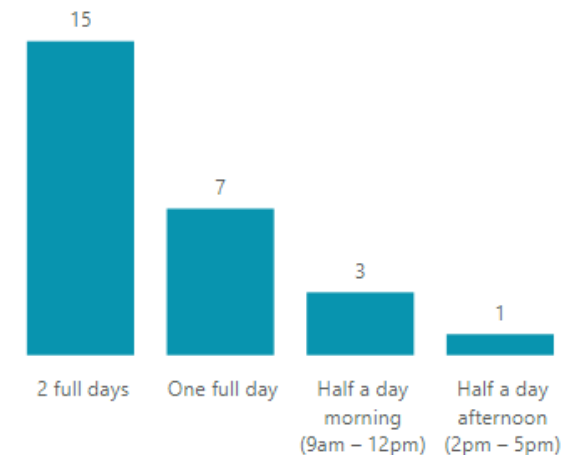
Preferred Language



Preferred Training Modality



Preferred Duration of Trainings



Livelihoods and Self-Reliance

1. Homestead Agriculture

Thursday 13 January 2022

Focus on climate resiliency and innovative practices

20 participants from 10 different organizations

5 Sites:

- UNHCR/ Mukti Cox's Bazar
- WFP/ BRAC
- WFP/ ActionAid
- WFP/ CODEC
- CWW



Aggregation Centers and Farmers Groups

Wednesday 9 February 2022 ([registration link](#))

Focus on key challenges and lessons learnt

Max number of participants: 20

4 Sites:

- UNHCR/ CNRS
- WFP/ Shushilan
- FAO/ Shushilan
- DCA

FSS Partners' Site Visit | 9 February 2022 | Teknaf



Tentative itinerary:

Time	Location	Activity type (e.g. handicraft production)	Organization	Implementing Partner
7:00	WFP Shaibal Luxury Cottage	Travel from Cox's Bazar	FSS	
8:30 - 10:00	Baharchara, Teknaf Latitude: 21.064483 Longitude: 92.153976	Aggregation Center Introduction of participations and daily program	WFP	Shushilan
10:00 - 10:20		Transit (20')		
10:20 - 11:20	Horikhola Collection Centre Whykong, Ward 4, Teknaf Latitude: 21.10200000 Longitude: 92.16681400	Vegetable Collection Centre	UNHCR	CNRS
11:20 - 11:40		Transit (20')		
11:40 - 12:40	Whykong Ward 3, Teknaf Latitude: 21.106459 Longitude: 92.201916	Lambabil farmer producer group 1	DCA	DCA
12:40 - 13:15		Transit (35')		
13:15 - 14:15	Paschim Ulochamari, Nhila, Teknaf Latitude: 20.99812698 Longitude: 92.24145899	Aggregation Center	FAO	Shushilan
14:15 - 14:30		Closing/wrap-up	FSS	
14:30 - 16:30		Travel back to CXB		

FSS Partners' Site Visit | Follow up workshop



Date: 14 February 2022

Location: Cox's Bazar (exact location will be confirmed)

Number of participants: max. 35
(UN, INGOs, NNGOs, government counterparts)

Time	Agenda
8:30 – 9:00	Registration
9:00 – 9:30	Opening remarks
9:30 – 11:00	Session I Aggregation centers and farmer groups – field visit Good practices and lessons learned: Planning and assessment Design Availability of additional services Social safety nets
11:00 – 11:15	Coffee/tea break
11:15 – 13:00	Session II Market linkages Available channels Challenges Opportunities
13:00 – 14:00	Lunch
14:00 – 15:30	Session III Improved production
15:30 – 15:45	Coffee/tea break
15:45 – 17:00	Way forward

Going forward (tentative key focus area):

- March 9: Self-Reliance NFI Production (Camps)
- April 13: Livelihoods NFI Production (Host Communities)

Livestock

- FSS prepared an excel file to develop a service map and dashboard for the livestock activity.
- Scheduled Next Monthly Meeting: Tomorrow, Wednesday, 26 January 2022 at 1100-1200 hrs.

Skill Development TWG updates

Skill Development Working Group



Skills Development Technical Work Group (SDTWG) is a multi-sectoral technical working group aiming at building synergies amongst stakeholder efforts and initiatives across all sectors engaging in Skill Development in the refugee camps and host community.

SDTWG's main objective is to establish an effective network with the relevant partners and agencies to collect quality information regularly and in a timely manner; to **ensure cooperation** among different partners to avoid duplication, share lessons learnt, build synergies and ensure a harmonized approach.

Skills Development Technical Working Group – Contacts of Co-Chairs

- 1. Joseph Falcone** Food Security Sector/Skills Development focal point
joseph.falcone@wfp.org WFP work mobile: +8801730309883
WhatsApp: +8801531339092
- 2. Ashraful Rahman** Education Sector/Youth Working Group co-chair
mdrahman@unfpa.org
mobile / WhatsApp: +8801760748034
- 3. Immad Ahmed** Education Sector/Youth Working Group co-chair
immad@hap.consulting
mobile / WhatsApp: +8801729748252

Skill Development WG updates



Skills Activities Mapping

- Early next week – Kobo form will be sent to partners to collect information on Skills Development activities

If interested in SDTWG mailing list, reach out Zolboo Bold-Erdene | FSS IMO – zolboo.bold-erdene@wfp.org

Next SDTWG Meeting will be held on Monday, 31 January 2021

EETWG updates

Energy & Environment Technical Working Group updates



- Workshop held on 24 January on **Human Centered Design** – by Humanitarian Assistance Program (HAP) & Youth Working Group (YWG) - strategy and recommendations on engaging refugee and host communities in building community-based solutions and awareness activities.
- GIS Training held on 18 January for EETWG partners
- Planning for 2022 plantation season - meeting between plantation partners and IOM and UNHCR site planners later this week (if any FSS partners have planting plans, reach out to Fenella ASAP)
- Energy field visit planned for early Feb

Meetings: First Tuesday of every month from 15:30-17:00 (next meeting: **Tuesday, 1 February**)

Contact person: Fenella Henderson-Howat, Interim Coordinator, Fenella.Hendersonhowat@wfp.org



*Information Request from EETWG from FSS Partners engaged

- Energy and Environment Team of UNHCR conducting a study (in partnership with communities, GoB agencies and academic institutions) on bamboo demand since 2018.
- The study aims to understand the amount of bamboo used for different purposes and ultimately identify any gaps in the value chain from a more 'supply-demand' driven approach.
- Request the partners who have used bamboo in their operations to complete the below information
- UNHCR is already in communication with IOM therefore those partners funded by IOM or UNHCR need not fill in the information.

The deadline for submission of this information is **31 January 2022**.

Energy & Environment Technical Working Group updates



*Information Request from EETWG from FSS Partners engaged

Partner name	E.g. WFP	YEAR			
Funding partner name	E.g. ECHO	2018	2019	2020	2021
Borak/Baijja	# of pieces	e.g. 1,000			
	Uses	e.g. nutrition center & community-center			
Muli	# of pieces				
	Uses				
Other	# of pieces				
	Uses				

Digital Partnerships in
humanitarian
assistance (WFP)

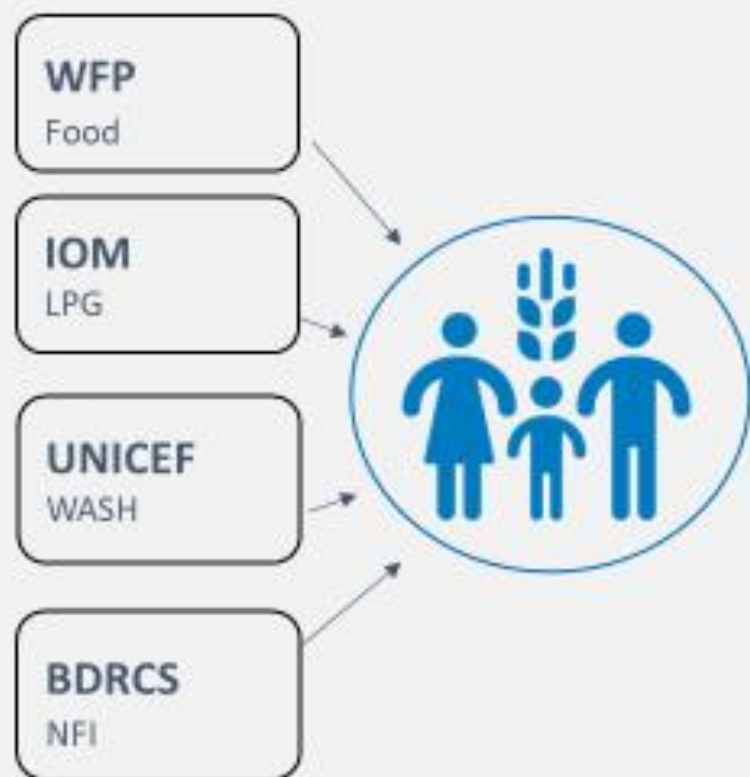


January 2022

Multi-Wallet

WFP's Partner Services

What is multi-wallet?



Single platform for beneficiaries to receive multi-sector assistance from different actors

Why Multi-Wallet?

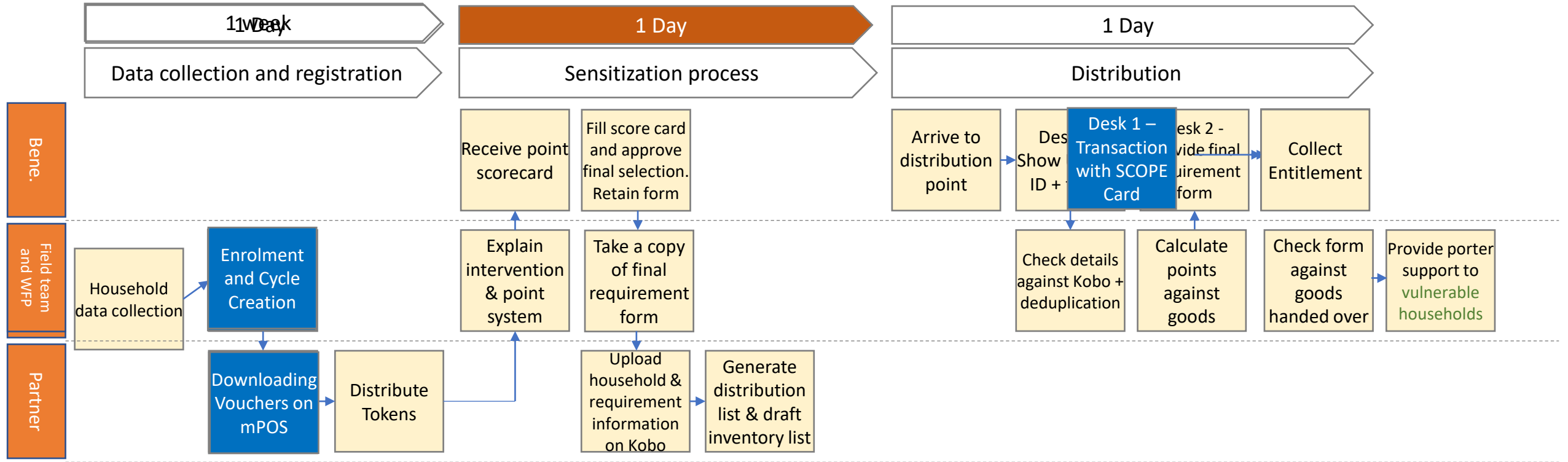
Distribution conducted by:

	Total	Signature of IOM Representative:
Husna Begum		
MD Shefik F-21	5	4
Sub ulwan Roshid F-13	5	3
Rohmat ulloh F-21	5	4
Shah Hussain F-21	5	4
Mazed F-21	5	4
6-17	5	4

Handwritten notes and fingerprints are visible on the table.

Distribution Workflow (Before)

Distribution Workflow (After)



Effective and appropriate targeting



Time-Saving



More Cost-effective



Ease of reconciliation with retailers

Non-Food Item

The Shelter/ NFI Common Pipeline is Supported



Canada

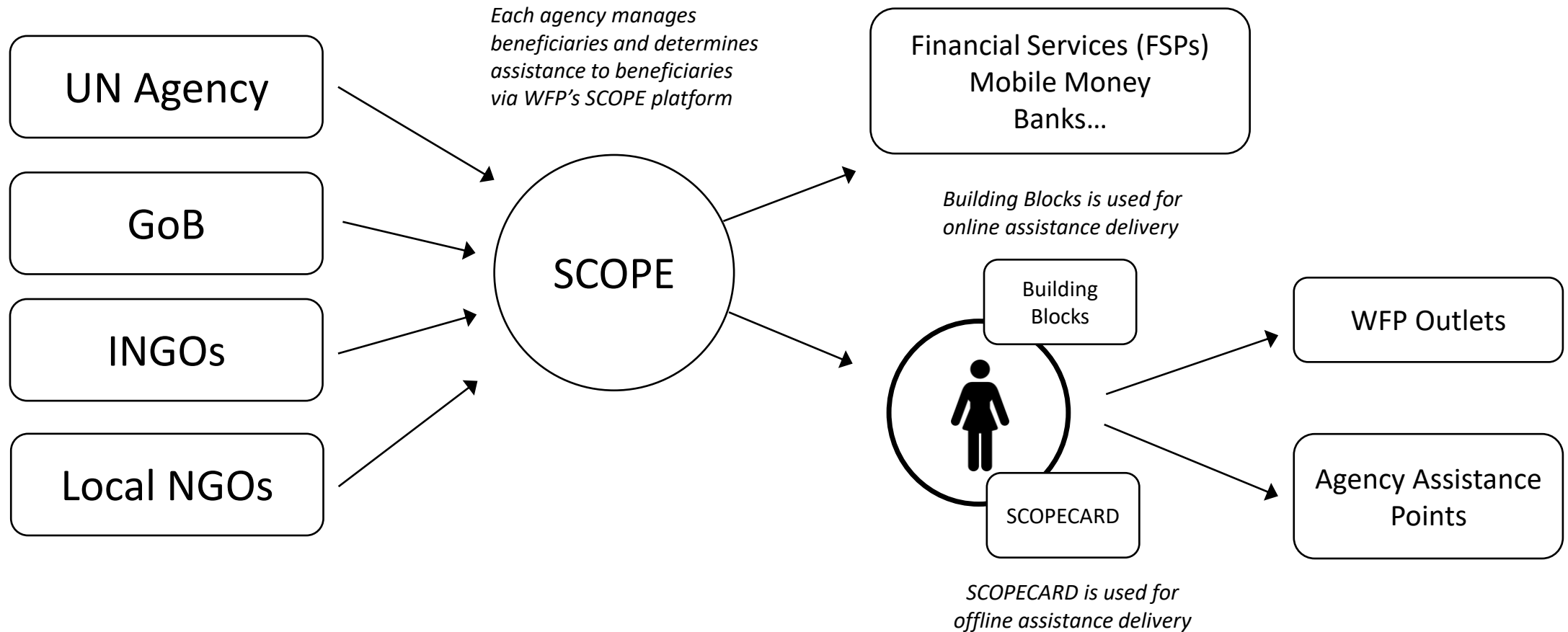
European Union
Civil Protection and
Humanitarian Aid



Schweizerische Eidgenosse
Confédération suisse
Confederazione Svizzera
Confederaziun svizra

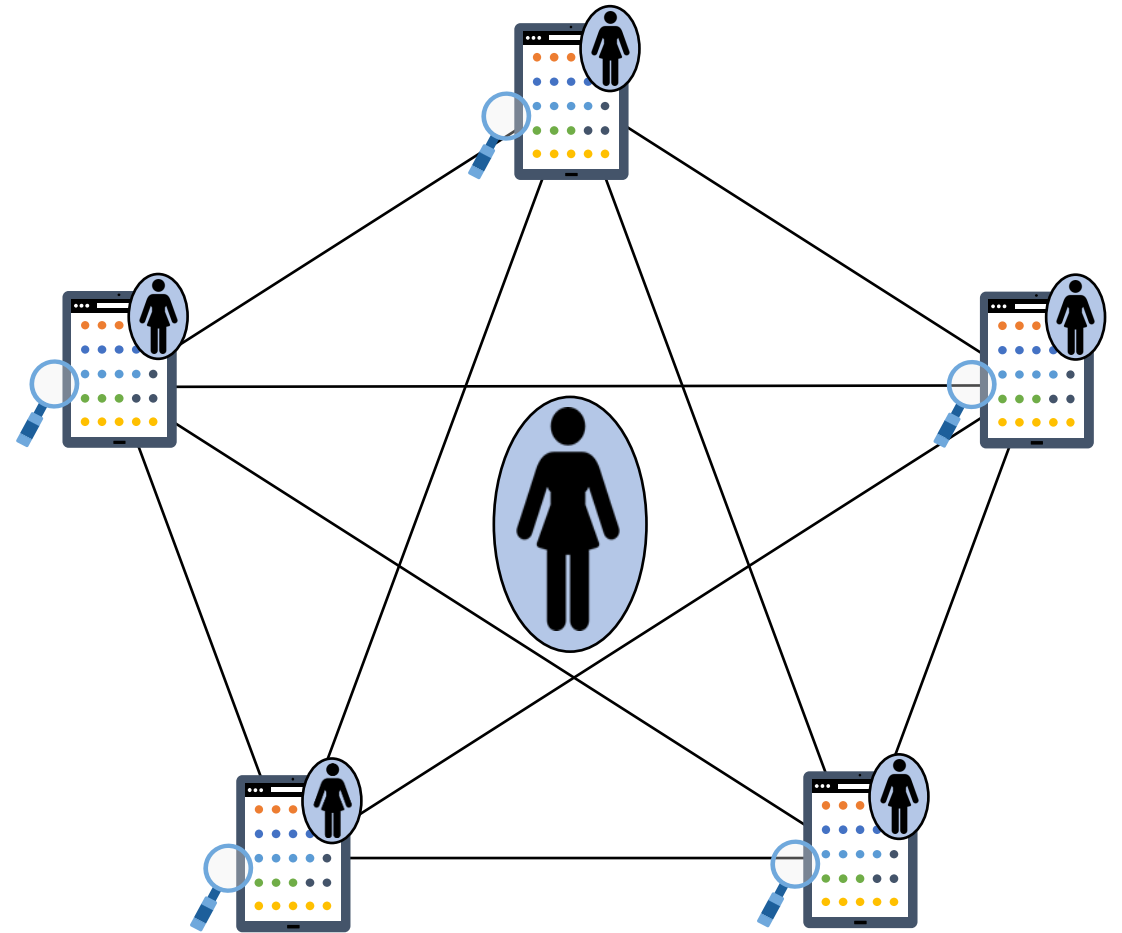
Swiss Agency for Development
and Cooperation SDC





Building Blocks: A Humanitarian Blockchain

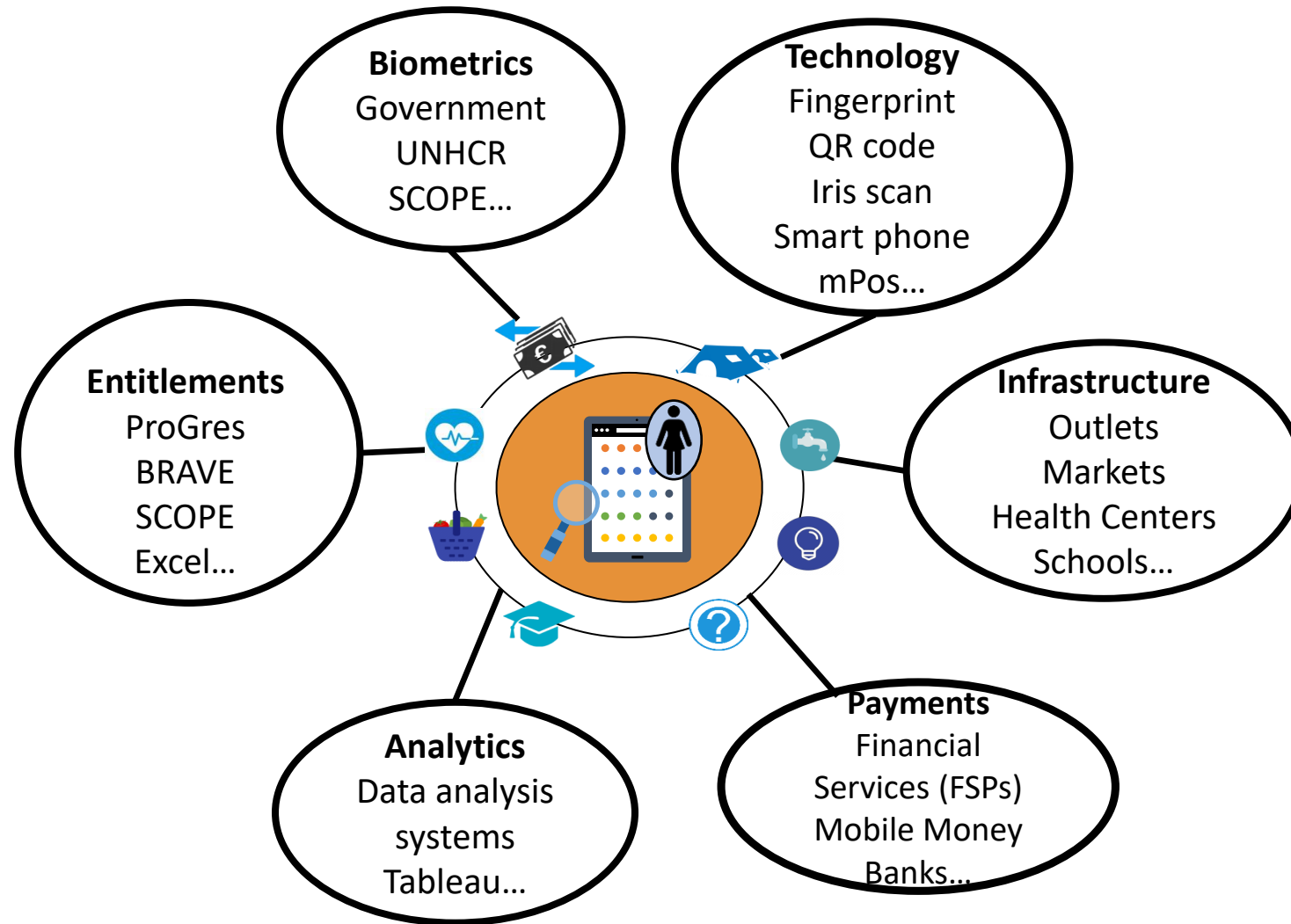
- ❑ **Building Blocks** is a **beneficiary-centric blockchain-based humanitarian network**
- ❑ No hierarchy : **all members are 100% equal co-owners, co-operators, and co-governors**
- ❑ Applications or 'smart contracts' deployed on the Building Blocks common network, available for free to all network members, e.g., for value transfer



Assistance Harmonization & Redemption Visibility



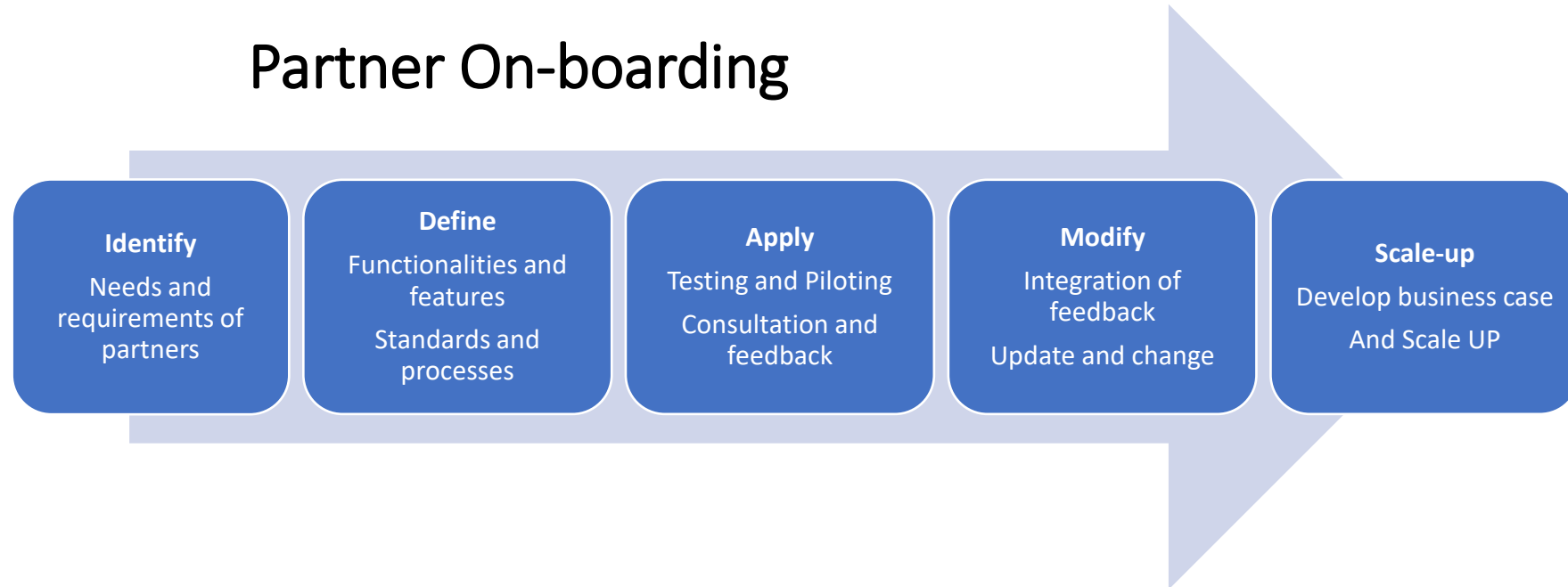
Building Blocks: Modular Design



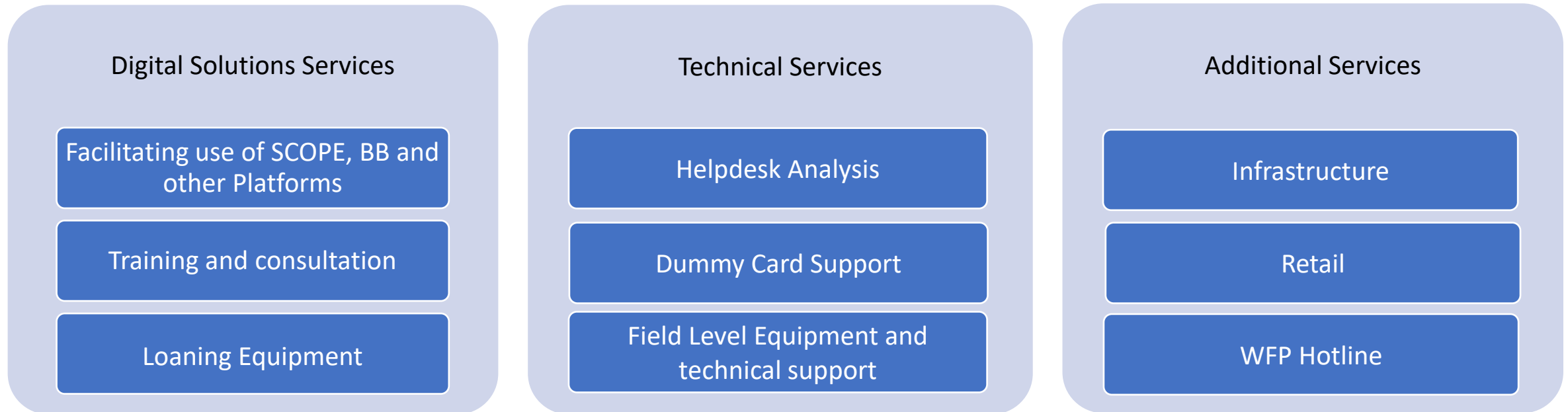
Partner On-boarding

How does it work today?

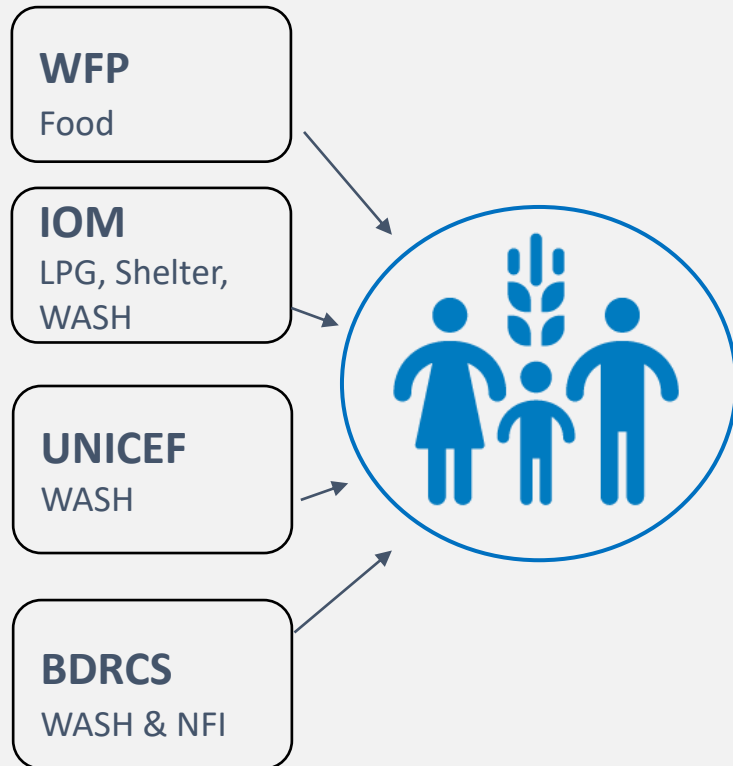
- The partner approaches and requests COs to use WFP's digital tools and services. The request is defined and Service Agreements or Data-sharing Agreements are signed with support of CO/RB/HQ.



Partner Services



WFP's Digital Partnerships



IOM

LPG, WASH, Shelter & NFI (Platform - SCOPE)

- IOM manages their own supply chain and logistic
- WFP sets up & manages the interventions on SCOPE
- WFP provides on-site technical support

UNICEF

WASH (Platform - BB and SCOPE)

- UNICEF signs contracts with WFP's retailers
- Piggy-backing on WFP's LTAs and infrastructure
- WFP sets up and manages interventions on SCOPE and through BB
- WFP provides technical and back-end support

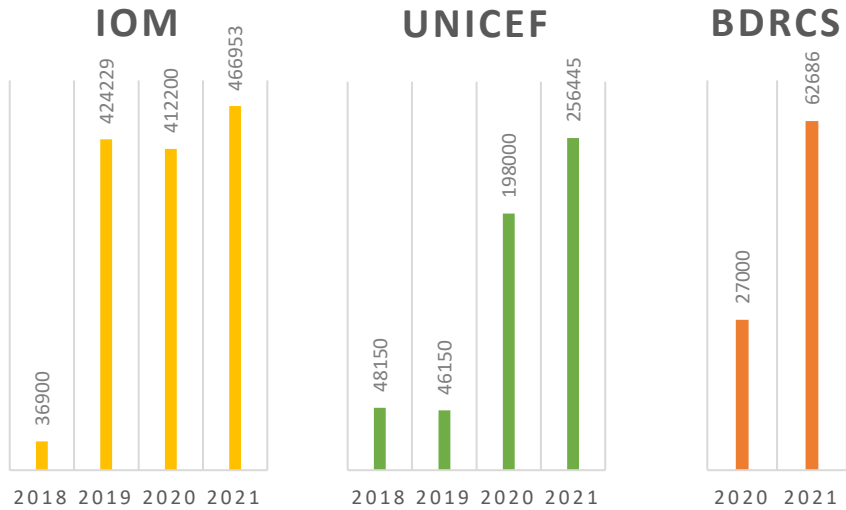
BDRCS

WASH and NFI (Platform - SCOPE)

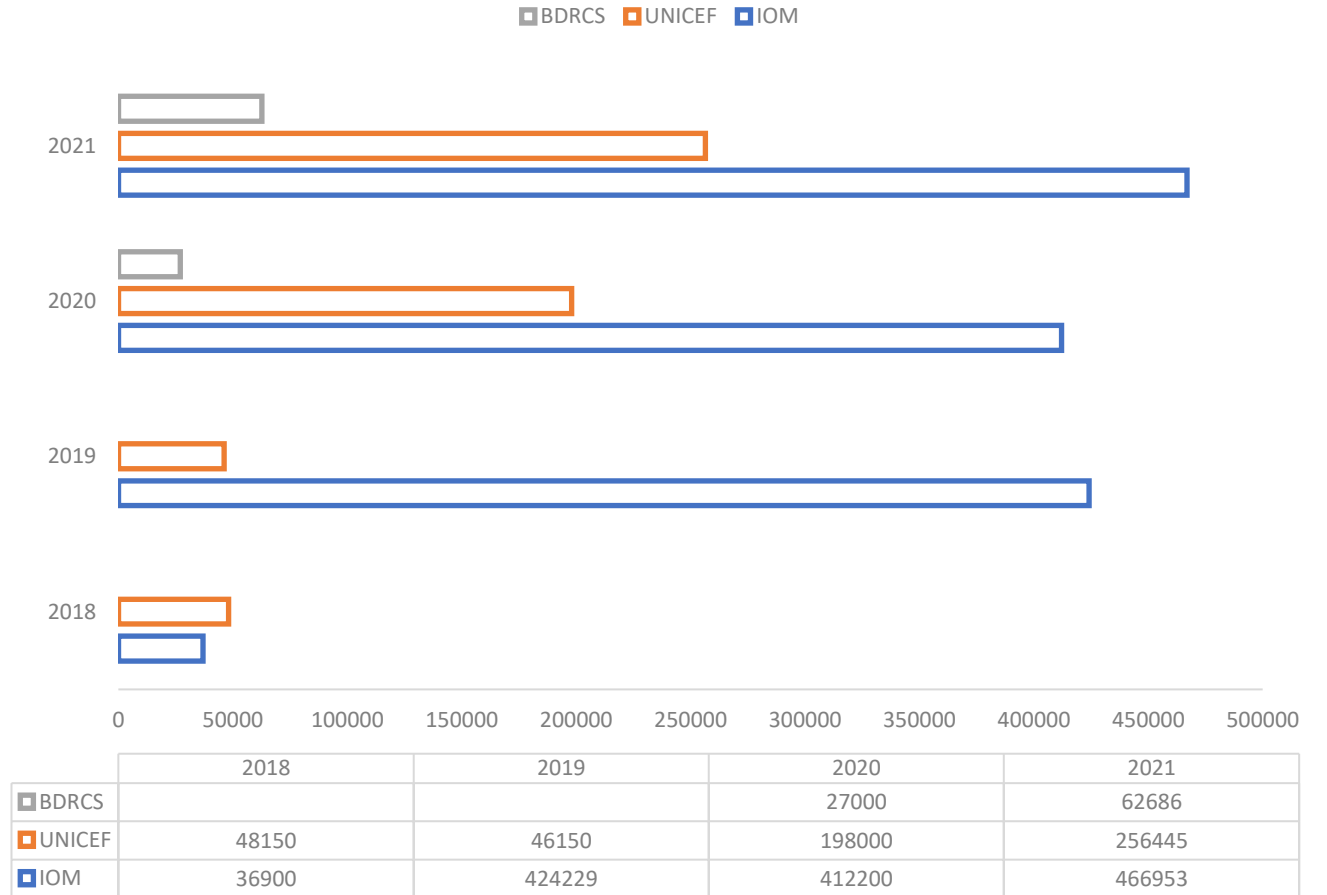
- BDRCS manages their own supply chain and logistic
- WFP sets up and manages interventions on SCOPE
- WFP provides technical and back-end support



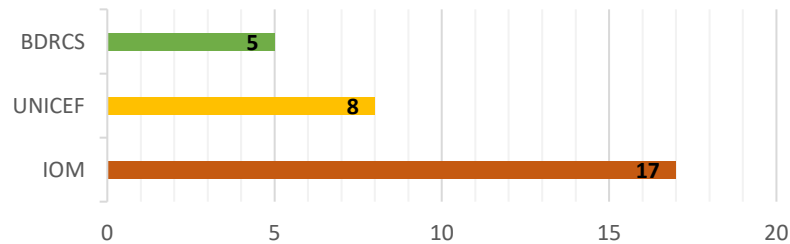
Beneficiary Coverage 2018-2021



Multi-wallet Scale up 2018-2021



Camp Coverage



THANK
YOU

The image features the words "THANK YOU" in a light blue, sans-serif font. The letters are arranged in two rows: "THANK" on top and "YOU" on the bottom. Each letter is a cutout with a hole at the top, through which a thin white string is threaded. The strings are suspended from the top of the frame. The letters have a subtle 3D effect with a slight shadow on the surface below them. The background is a solid, medium-blue color.

Vitamin-A Enriched Orange
Fleshed Sweet Potato for
Smallholders' Nutrition and
Income: A Preliminary Results
from the Farmers' Practices in
Cox's Bazar (FAO/CIP)



Food and Agriculture
Organization of the
United Nations



CIP
INTERNATIONAL
POTATO CENTER



Vitamin-A Enriched Orange Fleshed Sweet Potato for Smallholders' Nutrition and Income: A Preliminary Results from the Farmers' Practices in Cox's Bazar



Cox's Bazar, Bangladesh
25 January 2022

Dr. Bidyuth Mahalder, FAO
Dr. Moin Us Salam, FAO
Dr. Debashish Chanda, CIP

Associated Authors:

Mr. Mufazzal Hossain, FAO
Md. Moksed Ali, FAO
Md. Ashraful Haque, Shushilan

FAO-CIP Orange Flesh Sweet Potato Trials in Cox's Bazar



ABOUT THE INITIATIVE

Sweet potato is a resilient crop, often known as a classic food security crop. It can be grown in stressed environments such as dry spells and poor soils, requiring small resources - labor, irrigation and chemical fertilizers. The Orange Fleshed Sweet Potato (**OFSP**) varieties are rich in beta-carotene (the precursor to **Vitamin A**). It is a good source of nutrition from relatively cheap investment; and an option for cheap nutritious solution for nutritionally poor low-income population of countries like Bangladesh. Yields 30-40 t/ha within 130-140 days production cycle.

OFSP: NUTRIENT CONTENT (100 g)

Nutrient composition	Roots
Water (g)	70-75
Carbohydrate (g)	20-21
Protein (g)	2
Fiber (g)	3.3
Sugar (g)	3-6
Calcium (mg)	34
Phosphorus (mg)	54
Iron (mg)	0.5
Zinc (mg)	0.2
Potassium (mg)	298
Vitamin A (µg)	800-900

Source: Quality and Nutrition Lab, CIP, USDA SR-21 and TCRC, BARI, Gazipur



Farmers' capacity building in growing vitamin-A enriched OFSP varieties

Engage women in production systems

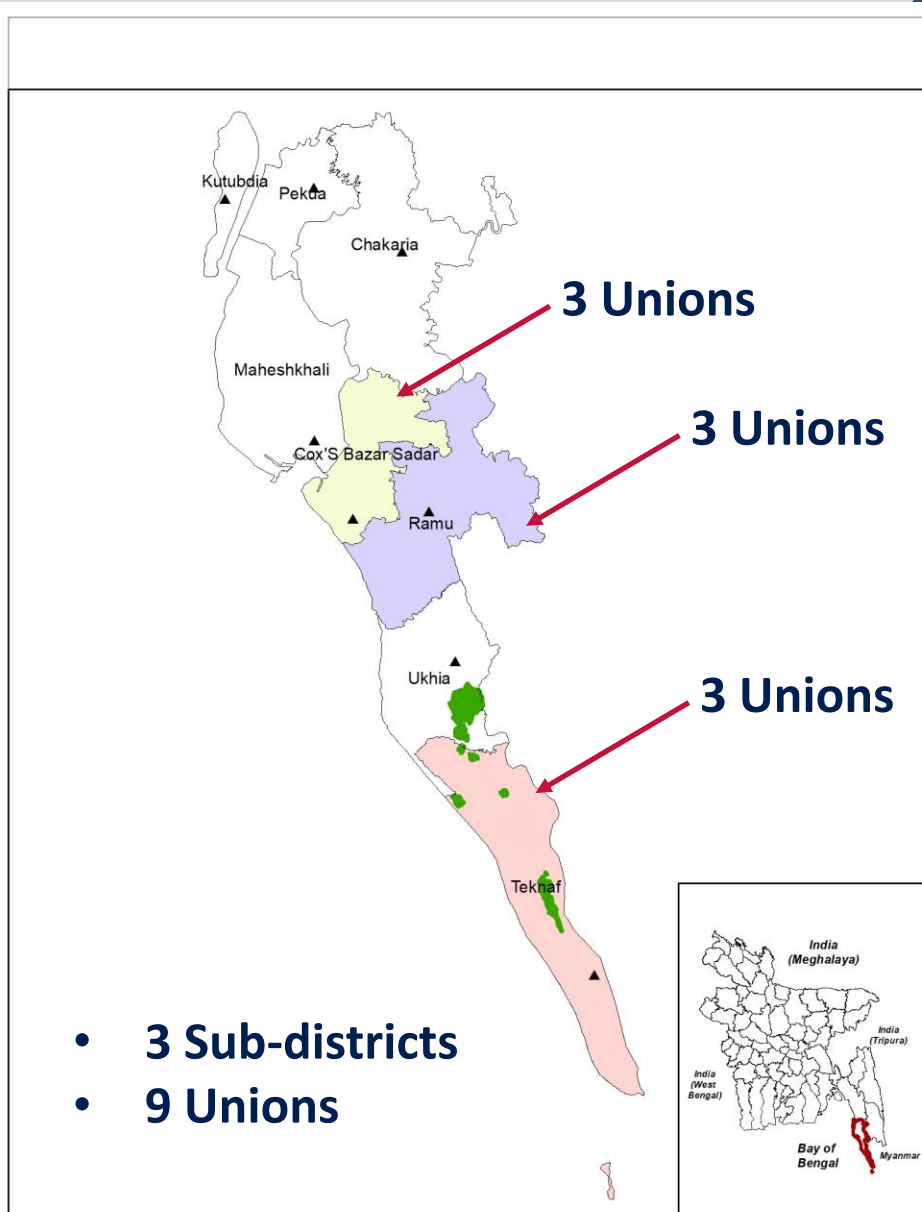


Develop better market access for the farmers for higher income

Organize mass awareness campaigning about high nutritious value of the improved varieties

FAO-CIP Partnership Project

FAO-CIP Project



- **Total 810 households;**
- **Marginal and smallholder farmers (with 30% women);**
- **270 HHs per Sub-district**
- **90 HHs per Union;**
- **225 vines per farmer;**
- **One decimal (i.e. 436 sq. feet) homestead land for each HH**

Geographic Coverage

Target Beneficiaries

Field Trial Protocol

Genotype (G) -

Variety (3): BARI SP 4
BARI SP 8
BARI SP 12

Environment (E) -

Location (3): Cox's Bazar Sadar
Ramu
Teknaf

Management (M) -

Agronomic practice (3): Low management
Moderate management
High management

Unions	Female	Male	Grand Total
Coxs_Bazar_Sadar	39	61	100
Idgaon	2	8	10
Jhilwanja	21	24	45
Patali Machhuakhali	16	29	45
Ramu	53	57	110
Garjania	15	5	20
Joarianala	28	42	70
Kauarkhop	10	10	20
Teknaf	26	70	96
Nhilla	25	65	90
Sabrang	1	5	6
Grand Total	118	188	306

Replication (Multiple): Farmers' field

Design: RCB

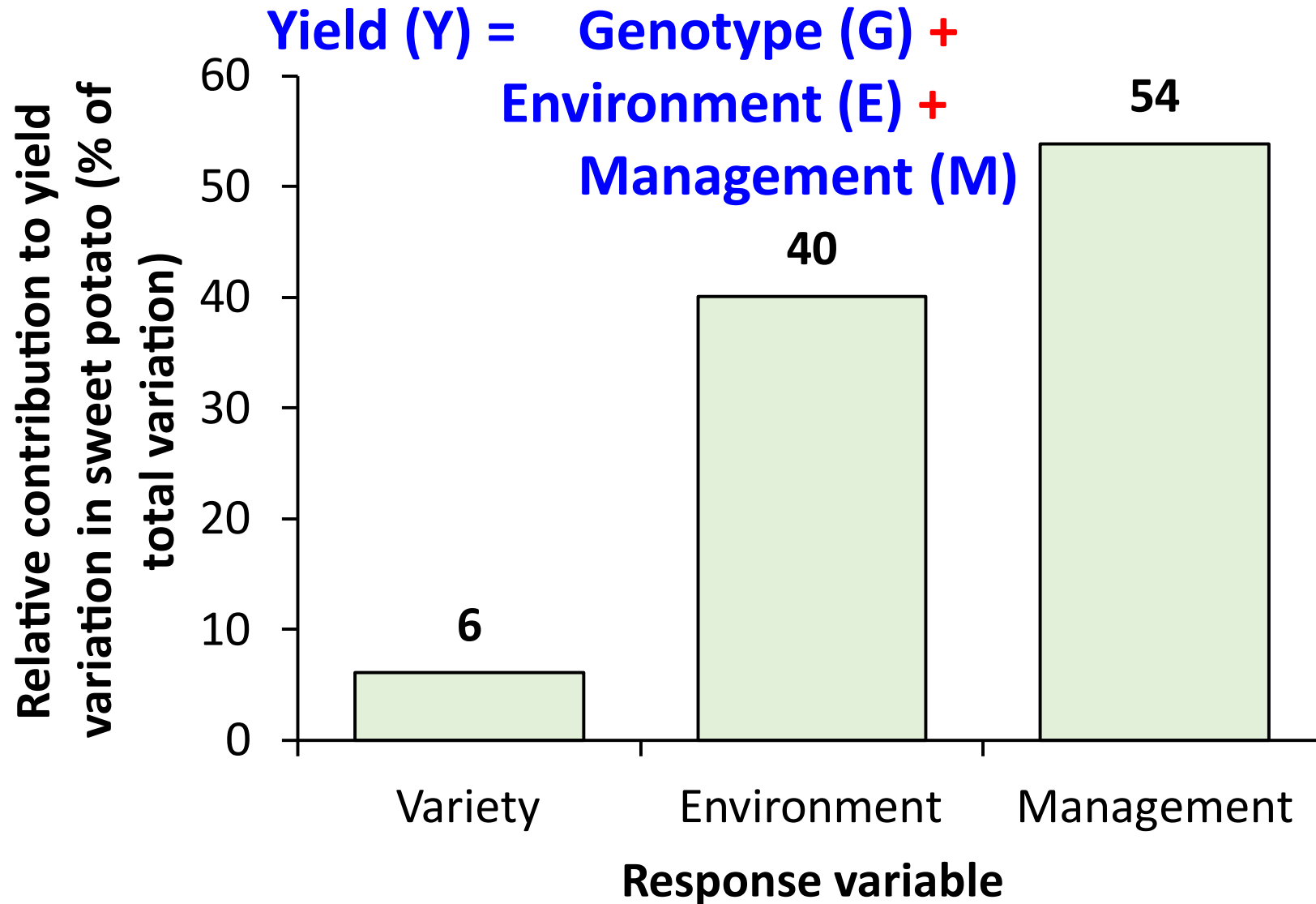
Year (1): 2020/2021

Key questions intending to address

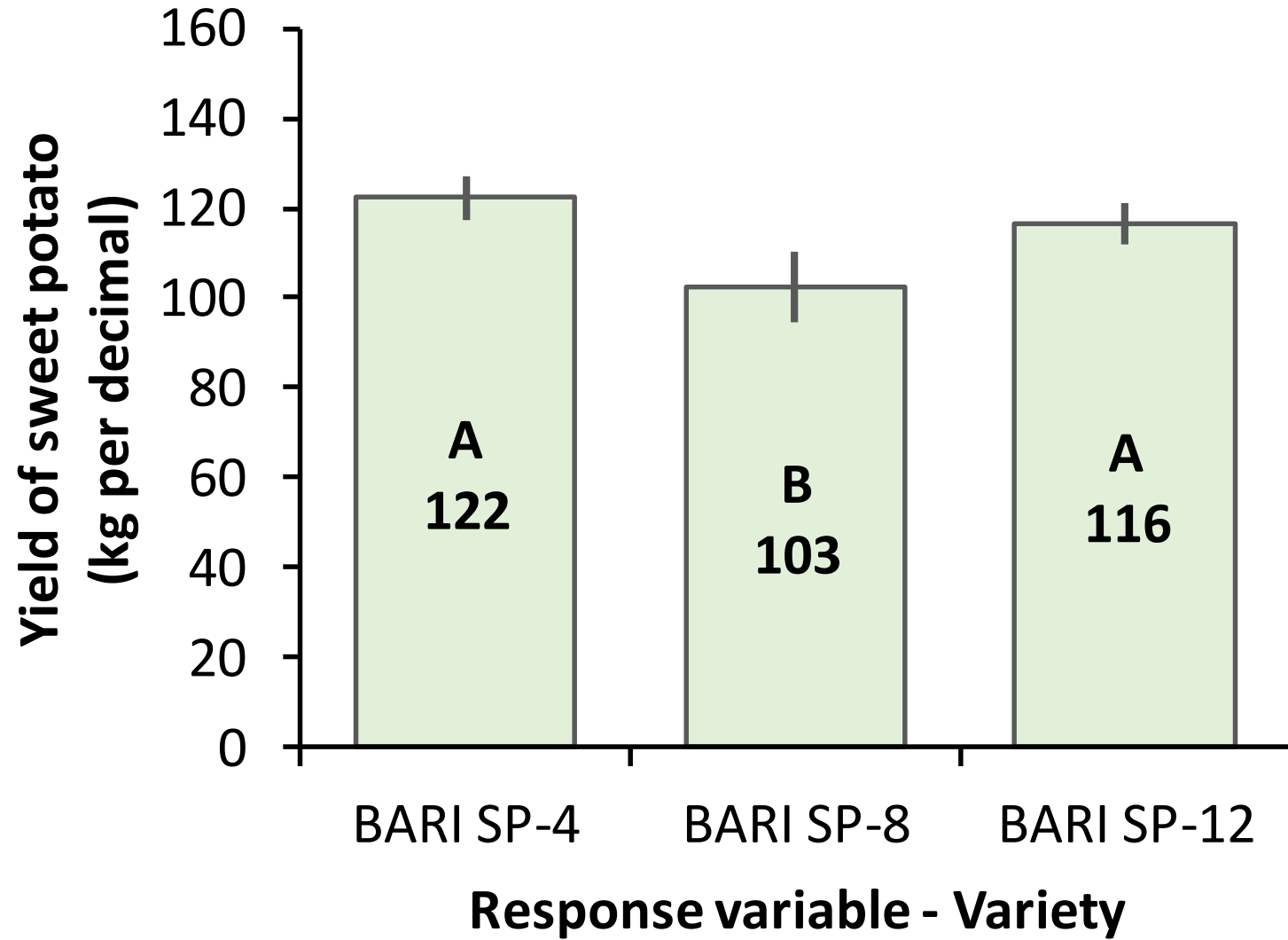
- **Did 'G' (variety) play any role in yield variation?**
- **Did 'E' (location) play any role in yield variation?**
- **Did 'M' (key practices) play any role in yield variation?**
- **What agronomic characteristics influenced the yield variation?**
- **Message to**
 - **Farmers & development agencies**
 - **Research institutes (e.g. BARI, BINA)**

G = Genotype; E = Environment; M = Management

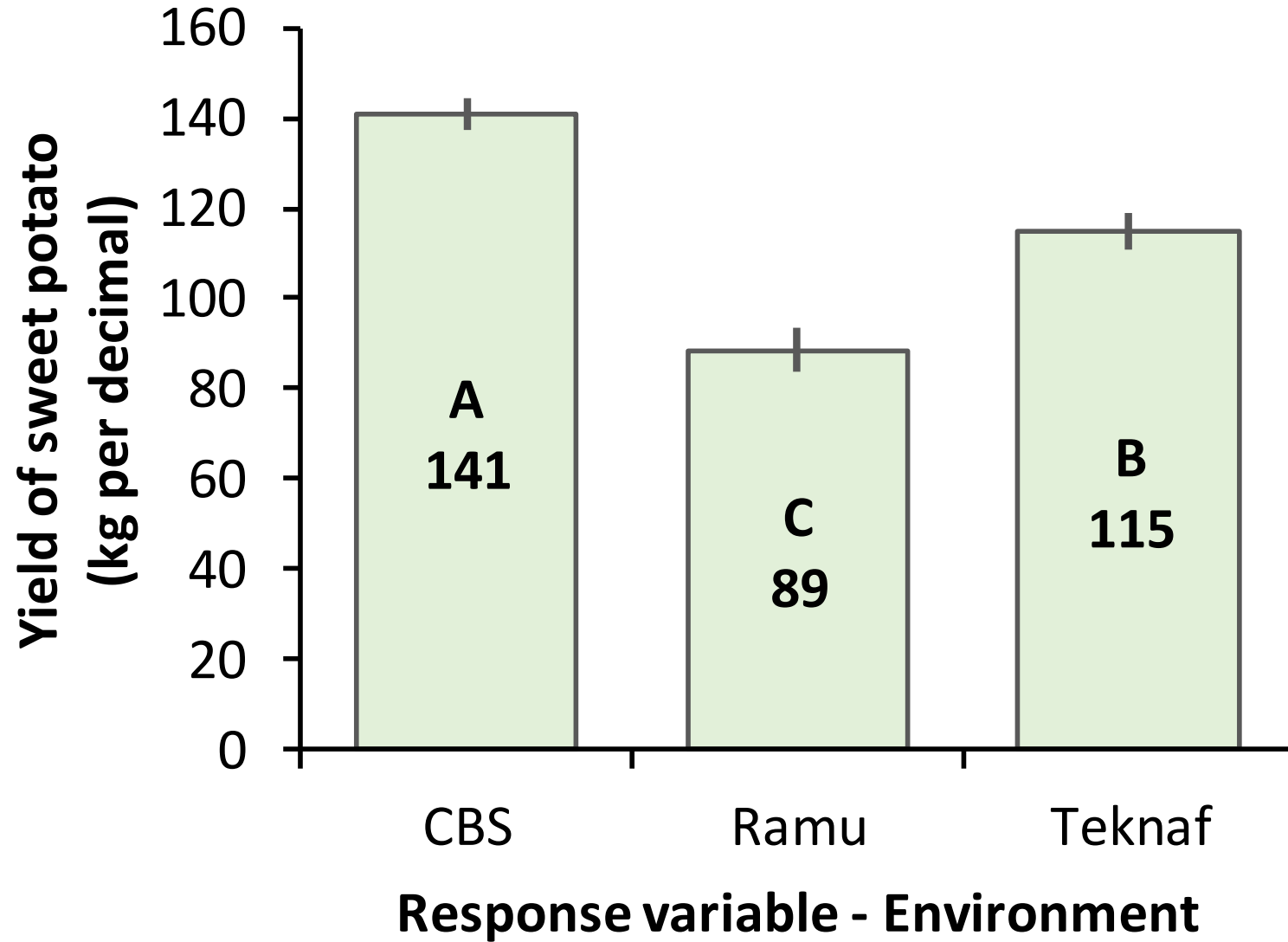
Field Trial Results: Yield



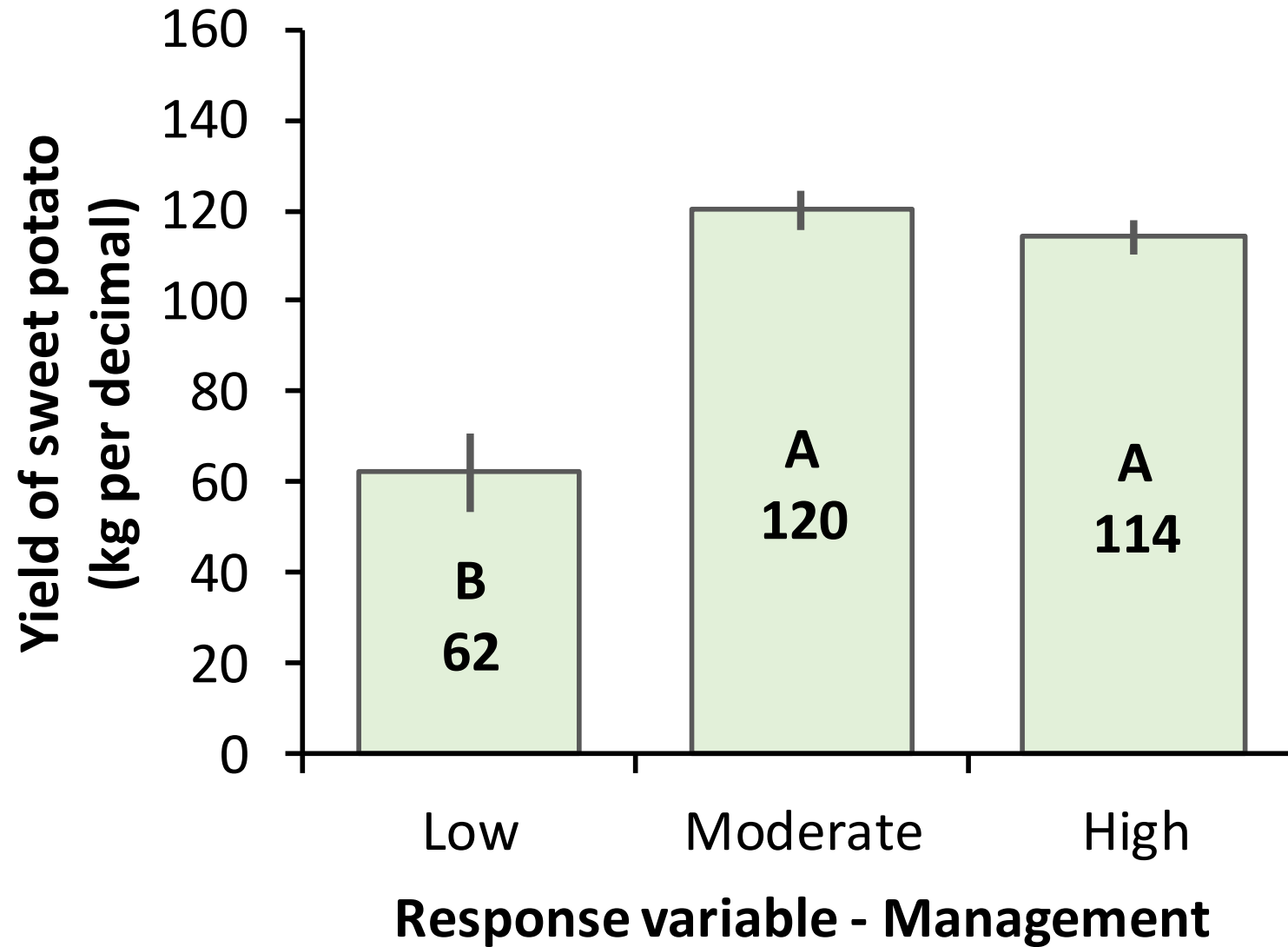
Field Trial Results: Variety



Field Trial Results: Environment

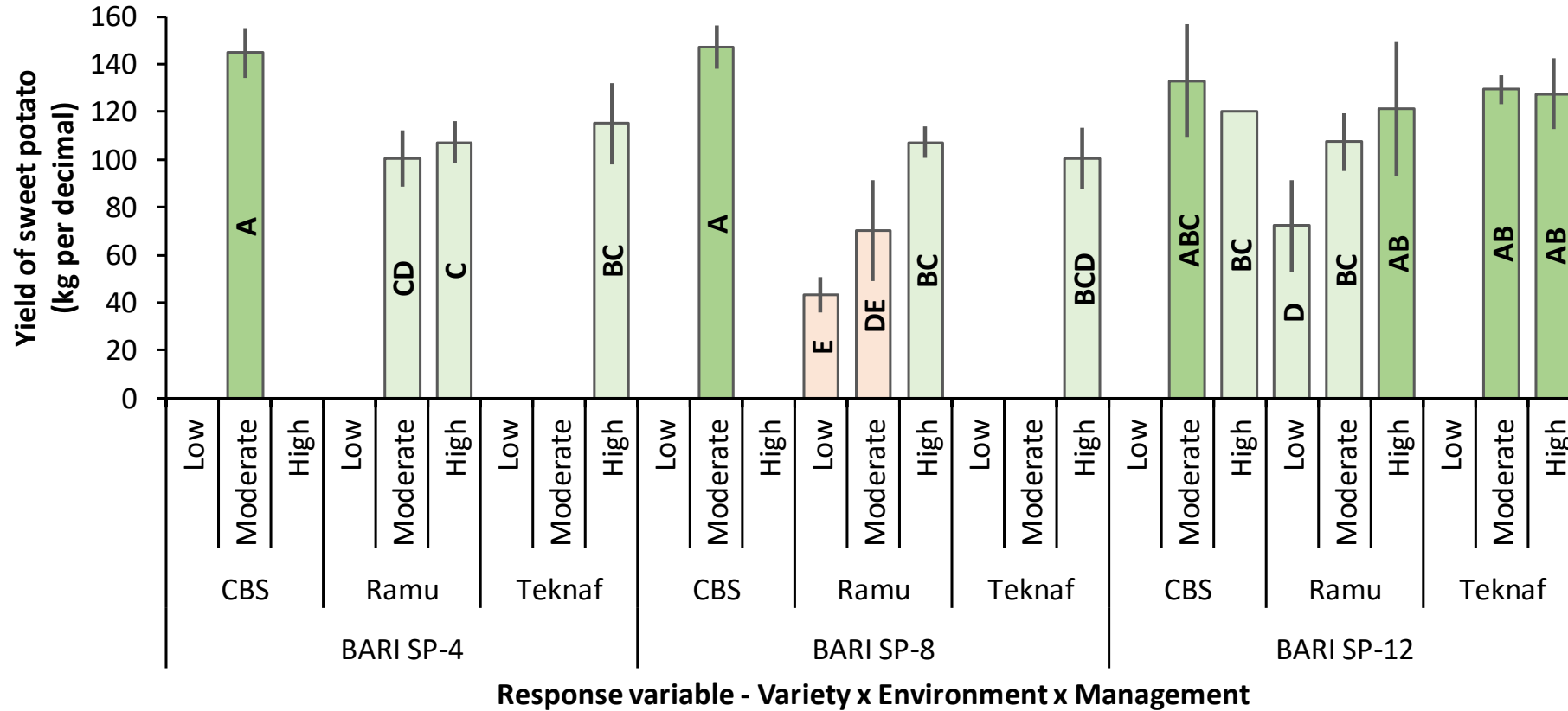


Field Trial Results: Management



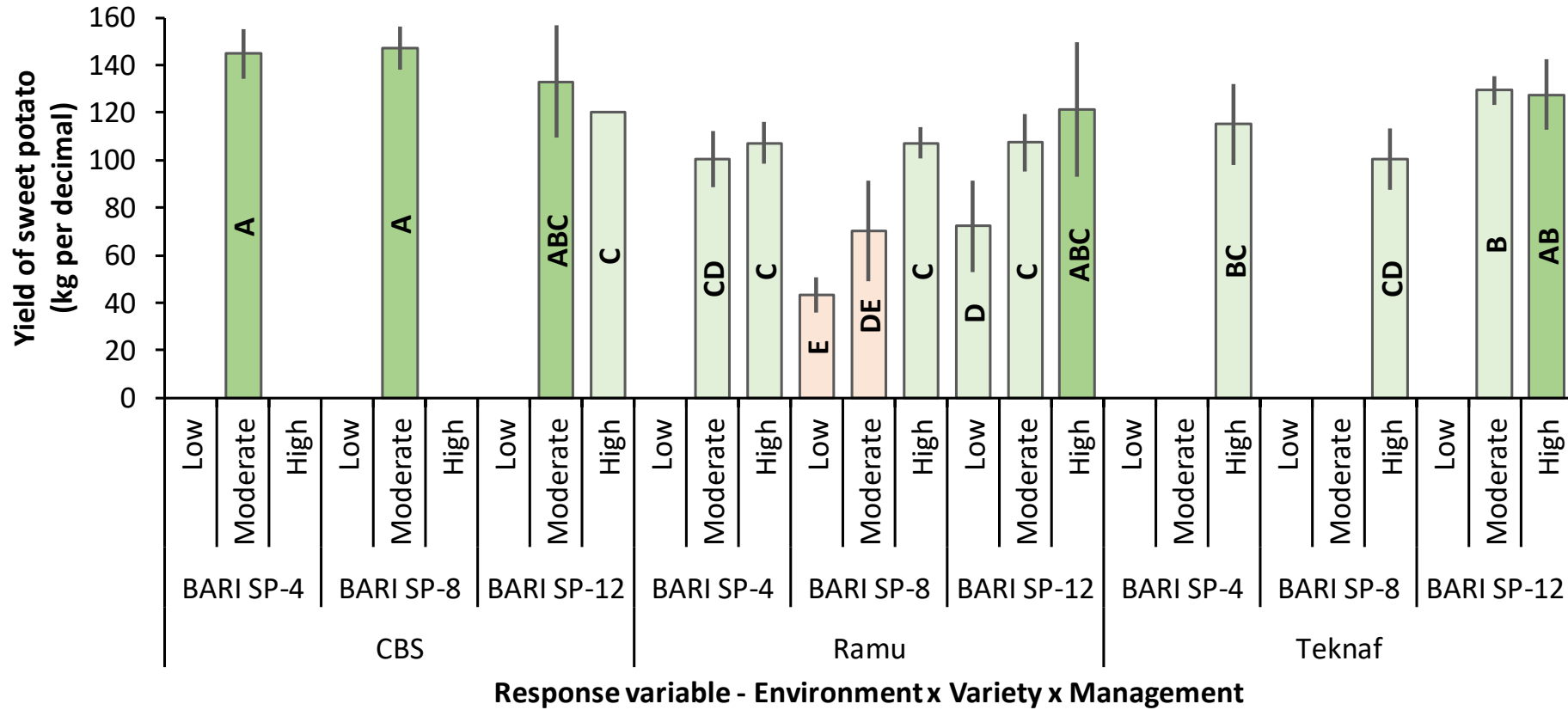
Field Trial Results: Interactions

Variety → Environment → Management



Field Trial Results: Interactions

Environment → Variety → Management



OVERALL FINDINGS

+ FUTURE PRACTICES



1 Contribution to Yield

Management / Practices contributed to 54% of the total yield variation followed by Environment (40%) and Genotype / Variety (6%).

2 Varietal Performance

BARI SP 4 (122 kg dec⁻¹) and **BARI SP 12 (116 kg dec⁻¹)** performed equally well and showed better results than BARI SP 8 (103 kg dec⁻¹) irrespective to environment and management practices.

3 Environment

The three varieties irrespective to management practices performed the best in **Cox's Bazar Sadar (141 kg dec⁻¹)**, followed by Teknaf (115 kg dec⁻¹) and least in Ramu (89 kg dec⁻¹). It will be further explored the reasons why the performance is poor in Ramu.

4 Management Practices

Both **moderate and high management** practices produced statistically similar and higher yields (120 kg dec⁻¹ and 114 kg dec⁻¹, respectively), compared to low management 62 kg dec⁻¹ .

EXPANSION



The improved sweet potato varieties will be expanded in other sub-districts and target the Rohingya communities.

SUSTAINABILITY



- Sustainability factors includes farmers being more engaged in production systems.
- Farmers are expected to adapt the improved farming technology
- Self-confidence and better extension services;
- More technological support;

GENDER



Female farmers falling under the eligibility criteria will get priority in production and marketing

MAJOR RISKS

- Better opportunities and profitability of cultivating other crops;
- Natural disasters can affect farmers' production
- Not getting better market price and unavailability of quality vine
- Lack of systematic monitoring during project period



A man in a dark shirt and light-colored shorts stands in a field, holding a large bunch of harvested sweet potatoes. The background shows rows of corn plants and some trees under a clear sky. The entire image has a blue tint. A yellow rectangular box is overlaid on the center, containing the text "THANK YOU" in bold, black, uppercase letters.

THANK YOU

Partners Update

- Concern Worldwide has distributed clothes to fire victim's male, female, and child (Lungi, Shawl, women's cloth, sweater for Child and sandal) with consultation with respective CiC.
- WV Bangladesh provided skill development training on Machinery and bamboo concentric to 595 Rohingya youth under community service program in Catchment-C and provided homestead gardening training to 440 beneficiaries under emergency food security program, establishment of Multipurpose facilitation center is ongoing.
- Partners were requested to share operational updates to FSS at info.coxsbazar@fscluster.org

AOB

AOB



- Update on FSS files: all files from 2021 have been archived [here](#)
- Next FSS coordination meeting modality is hybrid, (in-person in ISCG conference room or online)