



Number of Targeted Beneficiaries Reached by Region

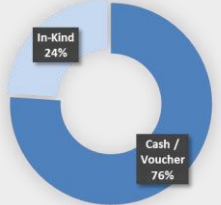


24 Partners Reported

Activities by Modality



Beneficiary Numbers

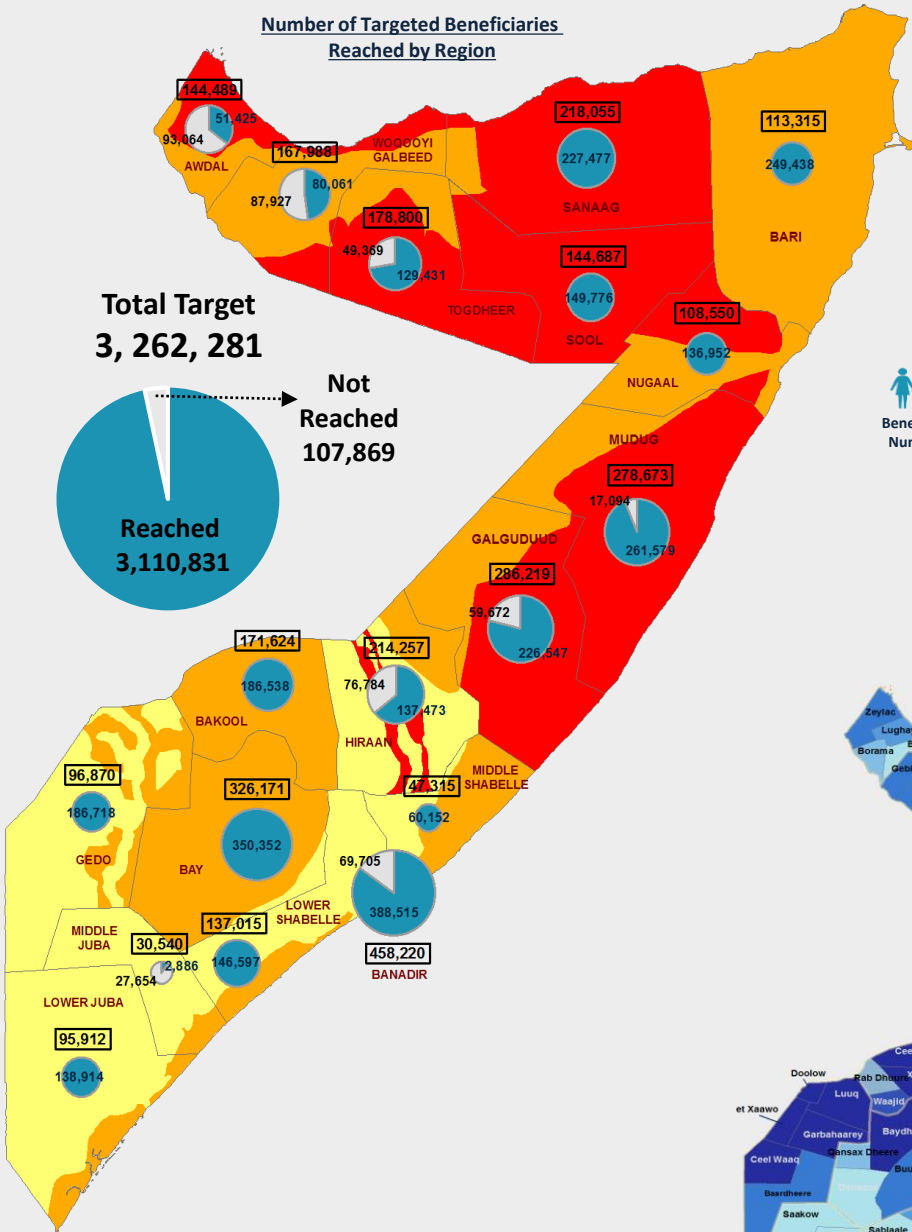
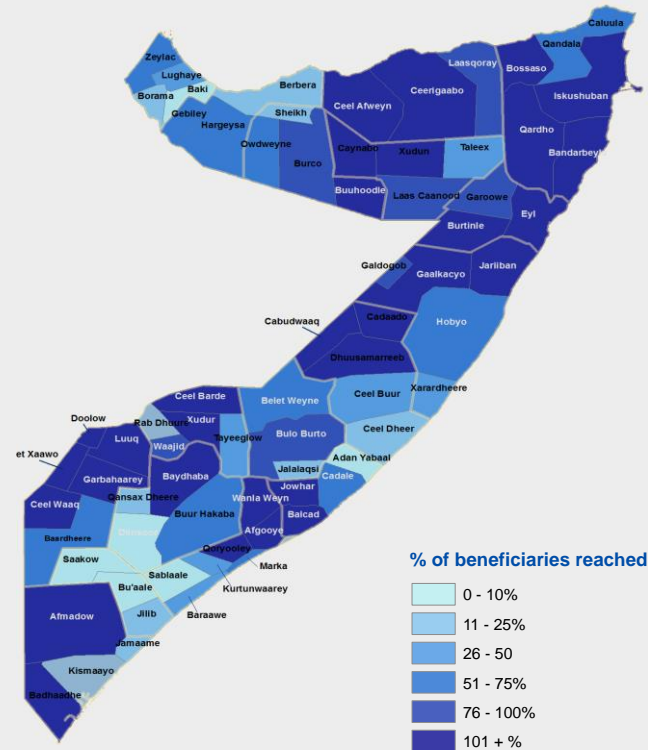


Total Target 3, 262, 281

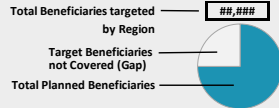
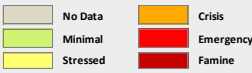
Not Reached 107,869

Reached 3,110,831

Percentage of Targeted Beneficiaries Reached per District



IPC Acute Food Security Situation as per FSNAU Jiilal Assessment



Strategic Objective 1 Update



FSC partners assisted **3,110,831** (97% of beneficiaries targeted), which is a 4% increase from September.

The following regions demonstrated an increase in the number beneficiaries assisted: Galgaduud, Sool, Awdal, Banadir, Gedo, Lower Shebelle, Togdheer and Woqooyi Galbeed.

Middle Juba is considered a "hard to reach" area with October marking the third report from partners who assisted 9% of the monthly target.

WFP (56%), CWV (11%) and both FAO & NRC (5%) lead the contributions in October

Internally displaced Somali women receive food aid rations at a distribution centre at a refugee camp in Somalia. Source Public Radio International

Monthly Trend Line – Beneficiaries Reached

