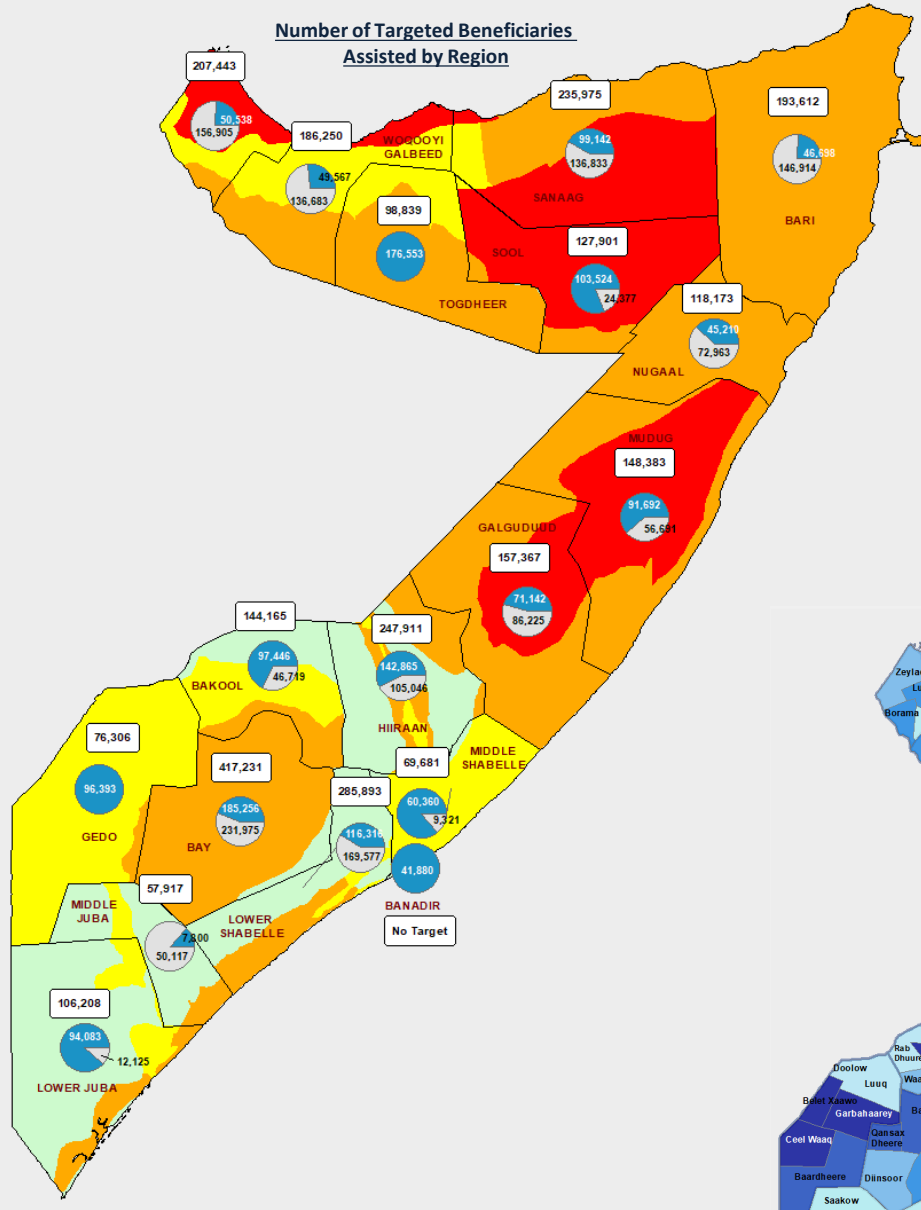




Number of Targeted Beneficiaries Assisted by Region

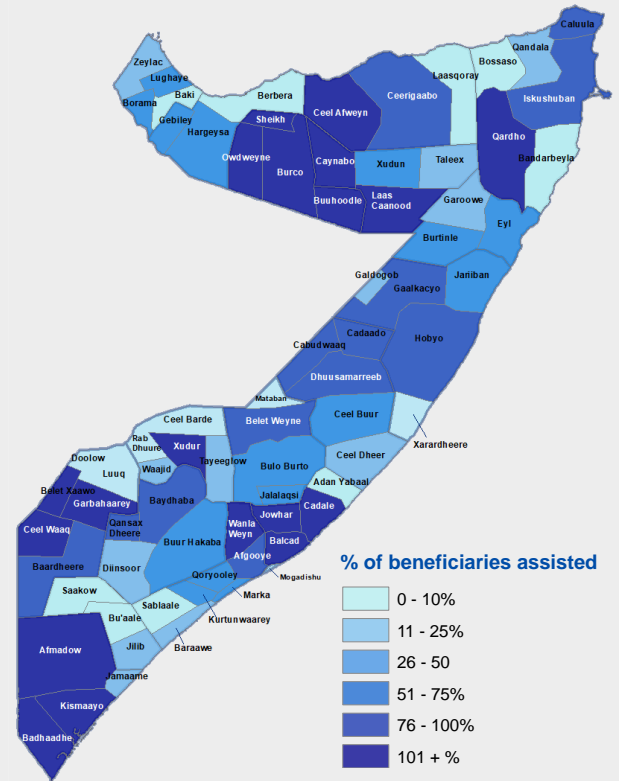


7 Partners Reported

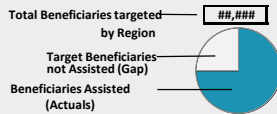
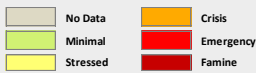


301,690 Voucher Value

Percentage of Targeted Beneficiaries Assisted per District



IPC Acute Food Security Situation as per FSNAU Jilaa Assessment



NB: IPC Map revised seasonally based on outcome of FSNAU assessment results i.e. February and August

Strategic Objective 2 Update



A total of 890,297 beneficiaries were assisted in May under the seasonal input and livestock assets protection objective. The Contagious Caprine Pleuropneumonia (CCPP) vaccination was the main assistance of the month to protect the livestock assets from contagious diseases. FAO have contributed the highest share of the beneficiaries assisted in May (99%) and the remaining 1% was contributed by NAPAD and ADD.

Cumulatively (Feb - May) 1,576,481 beneficiaries have been supported since the beginning of the GU Season.

Vaccination/animal treatment, agricultural input (seed and tools distribution) and irrigation and tillage support constitute the bulk of the responses so far. The FSC has reached 55% of the seasonal target (i.e. 2,879,257) in this objective.

Beneficiaries Assisted by Input type

