



Food and Agriculture
Organization of the
United Nations

CADRE HARMONISE



Cadre Harmonisé



CADRE HARMONISE Analysis and identification of areas and populations affected by Food and Nutrition Insecurity in Adamawa, Borno and Yobe state Nigeria

28th March 2017,

CONFERENCE HALL, BORNO STATE MINISTRY OF AGRICULTURE, MAIDUGURI, BORNO STATE

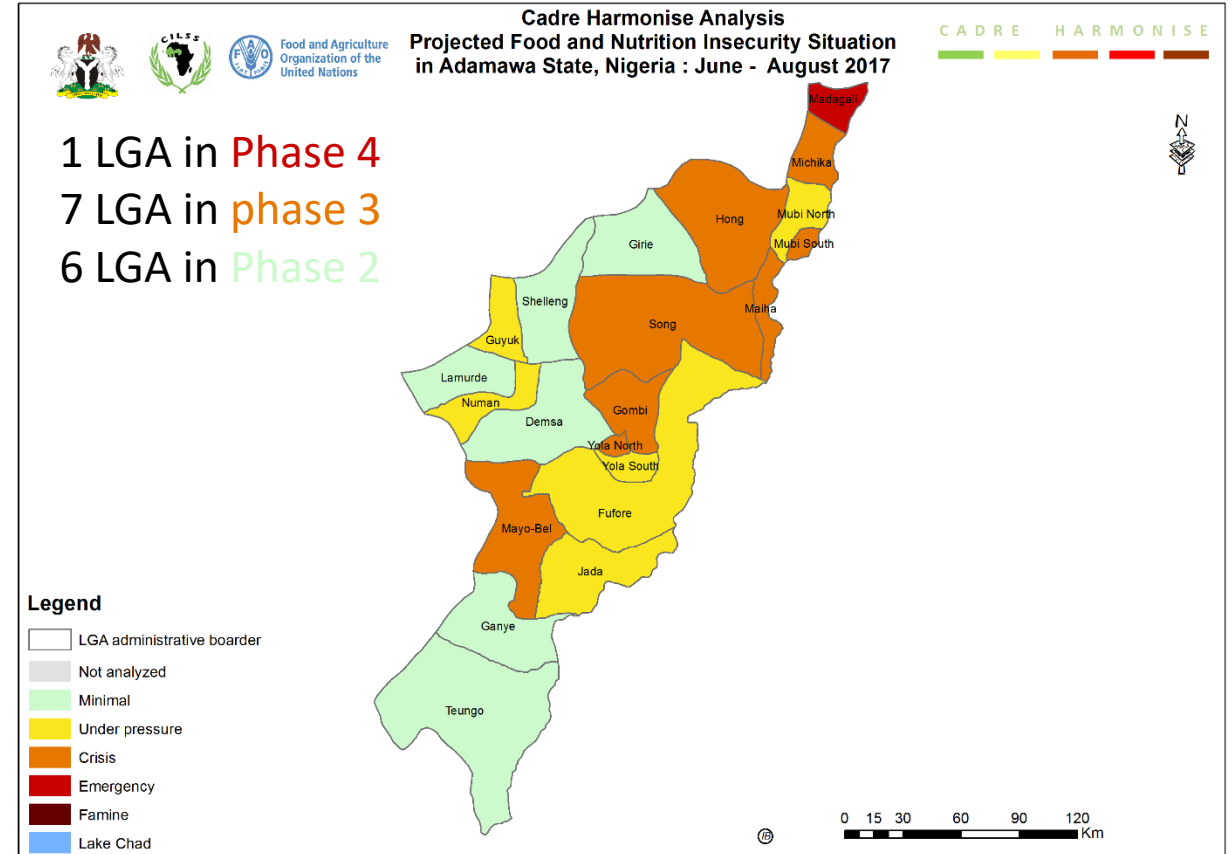
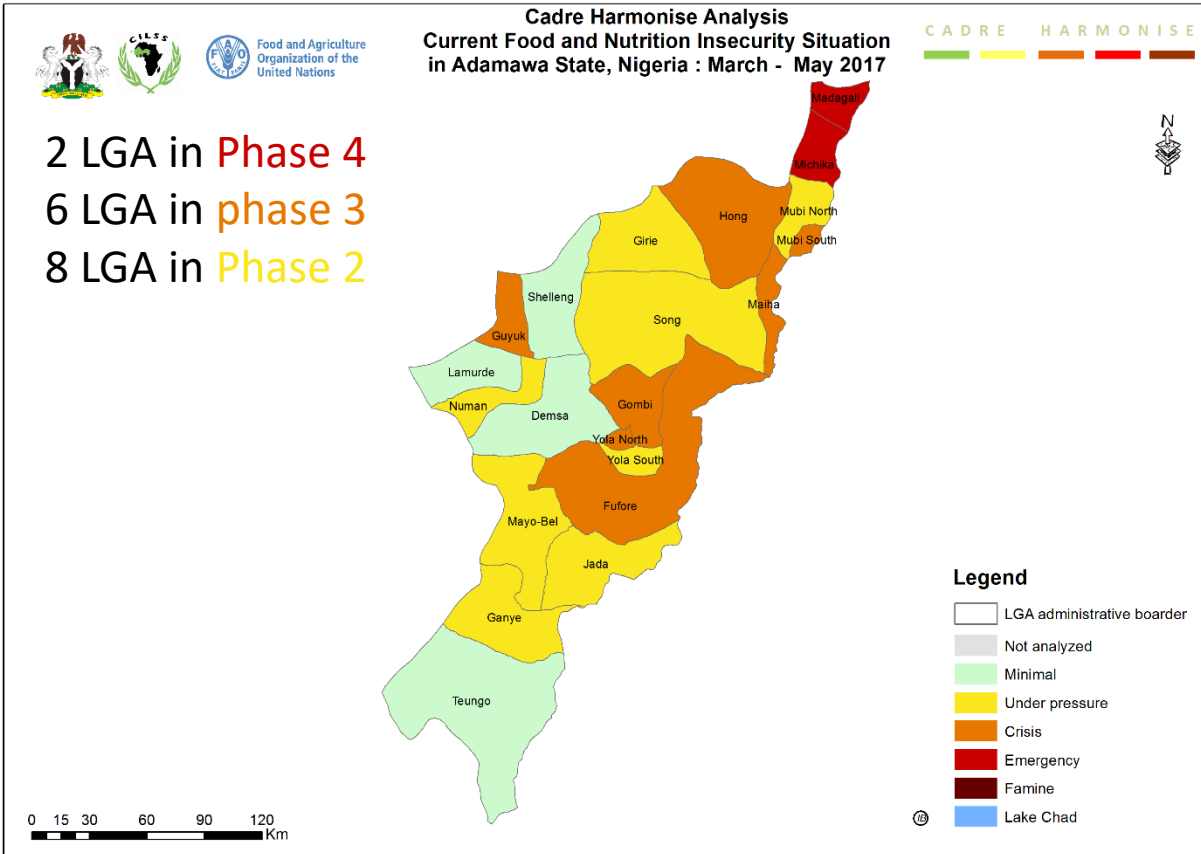
NIGERIA

FOOD SECURITY SECTOR

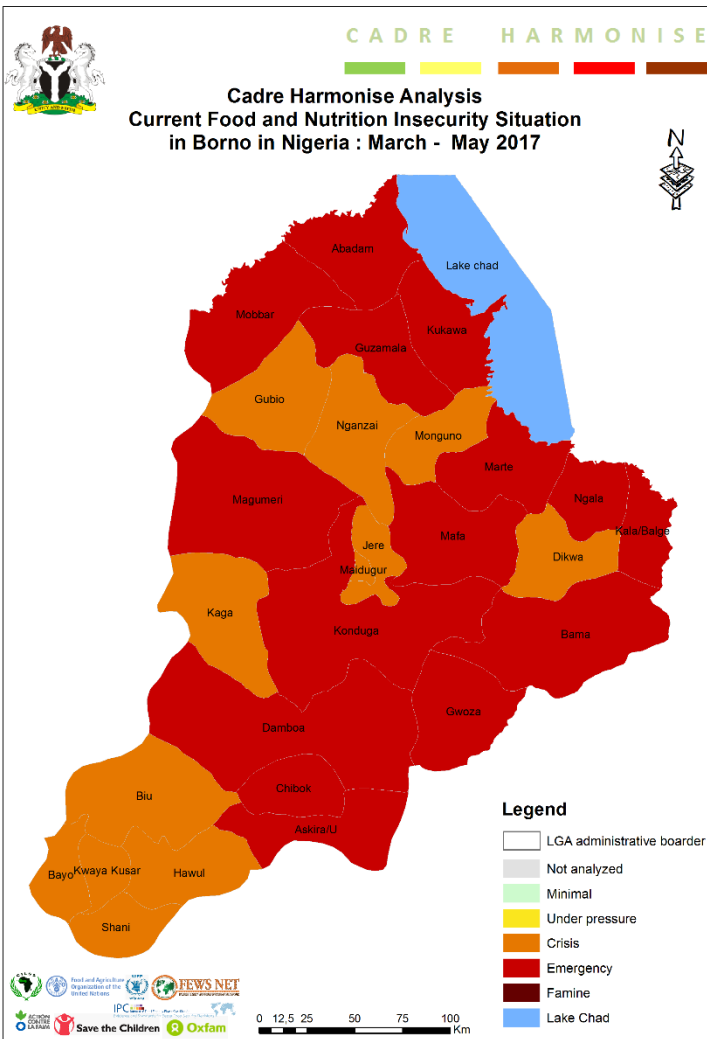
Strengthening Humanitarian Response



ADAMAWA STATE



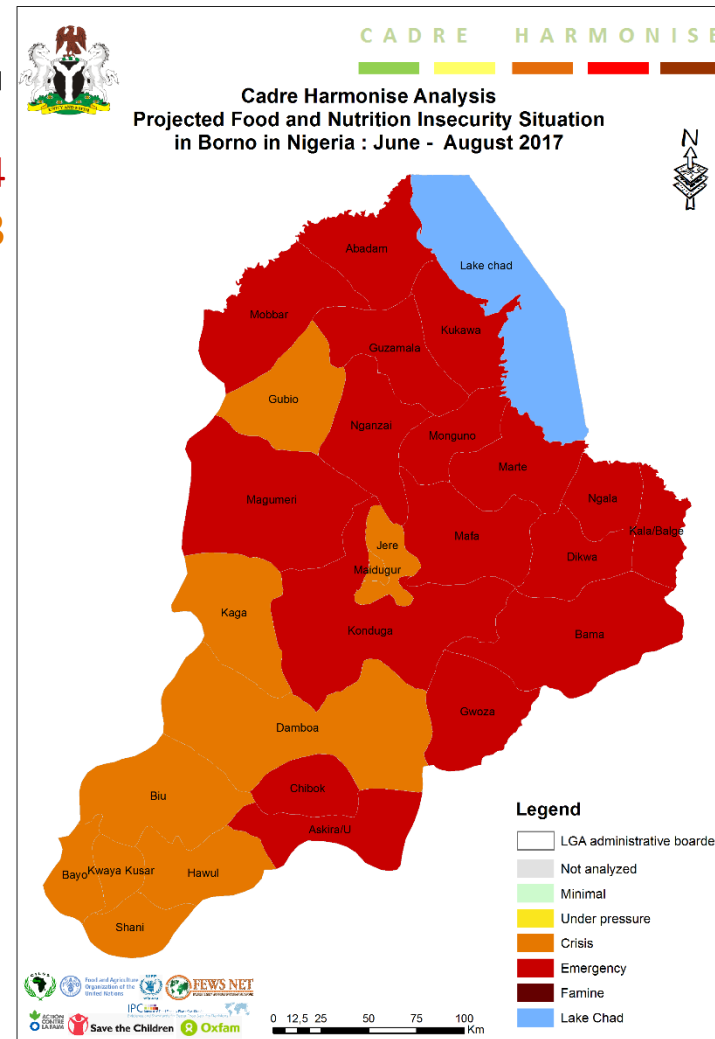
Period	Total population in Phase 3	Total population in Phase 4	Total population in Phase 5	Total population in Phase 3 to 5
March-May 2017	583 468	197 099	5 815	786 383
June – August 2017	575 648	91 314	3 690	670 652



BORNO STATE

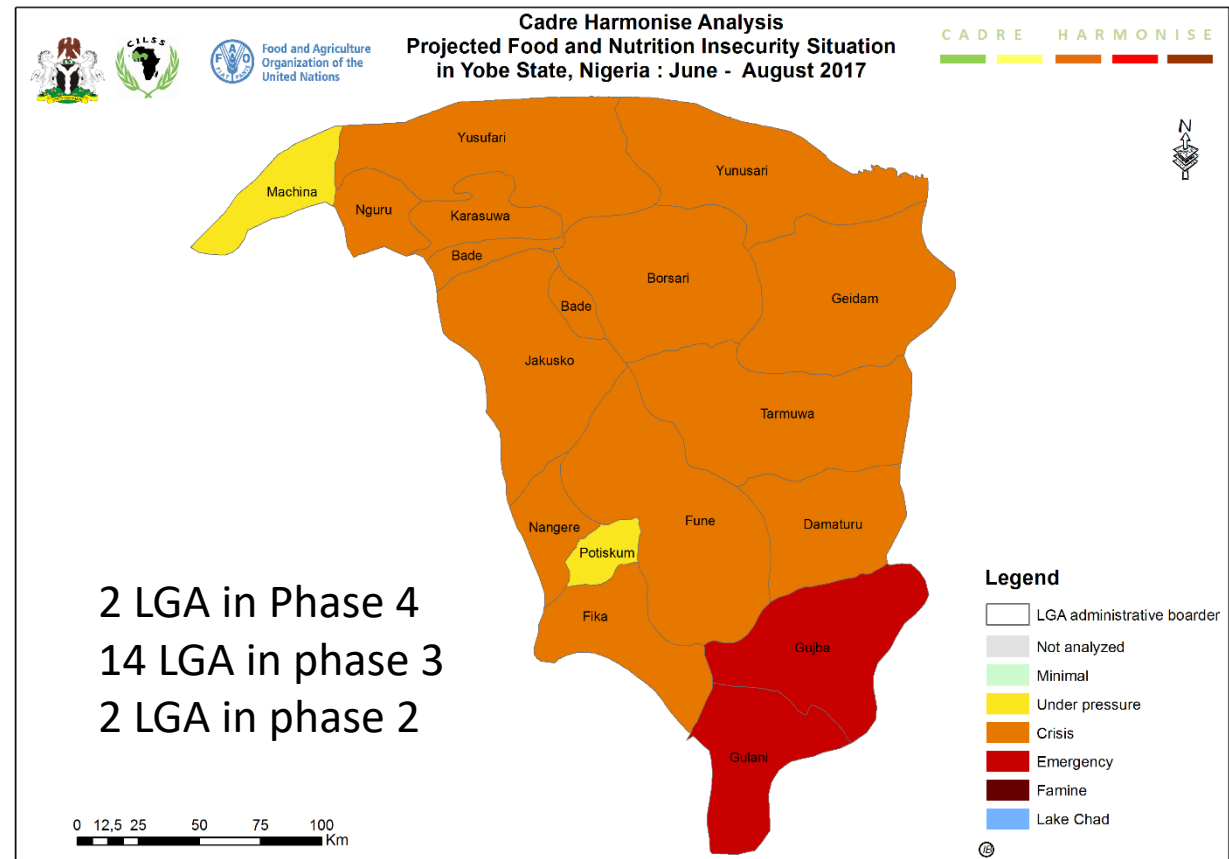
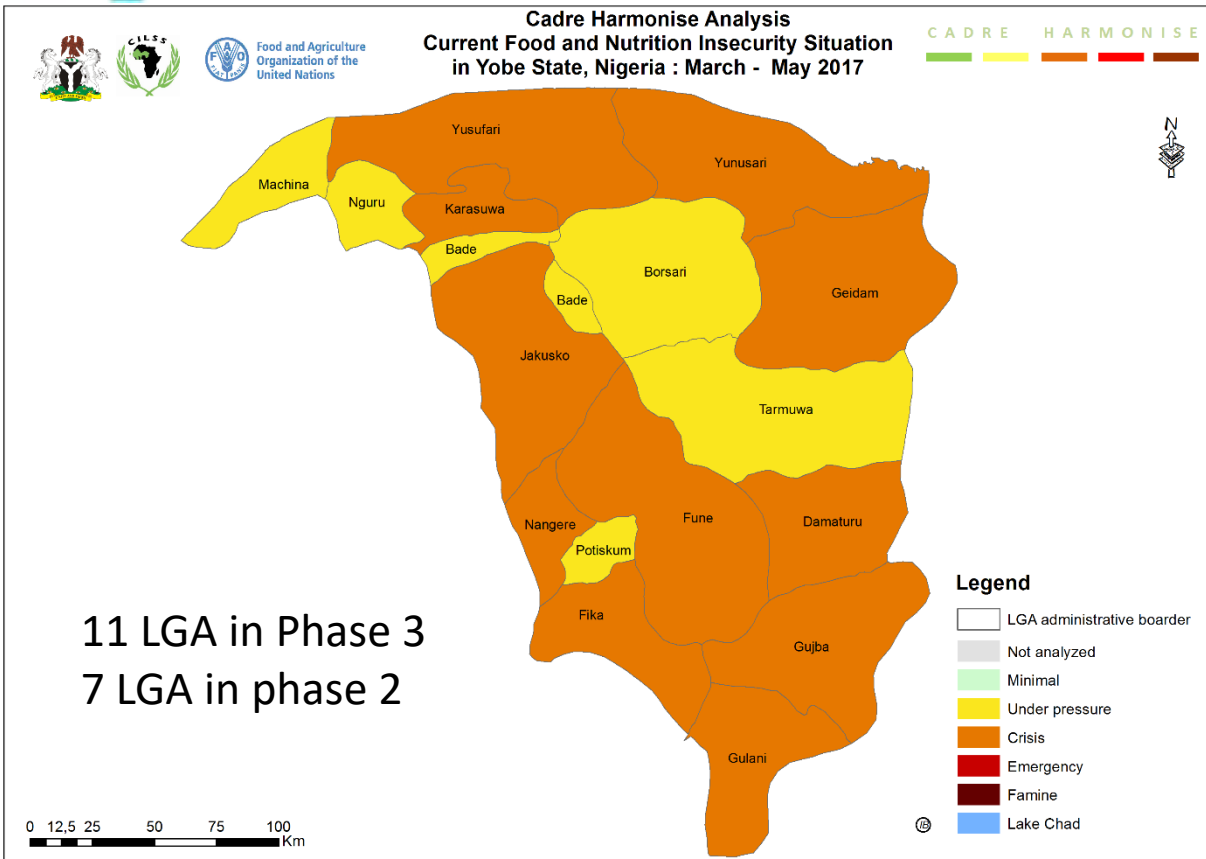
15 LGA in Phase 4
12 LGA in Phase 3

17 LGA in Phase 4
10 LGA in Phase 3



Period	Total population in Phase 3	Total population in Phase 4	Total population in Phase 5	Total population in Phase 3 to 5
March-May 2017	2 118 059	1 098 842	38 078	3 254 980
June – August 2017	2 442 029	1 204 541	43 066	3 689 636

YOBE STATE

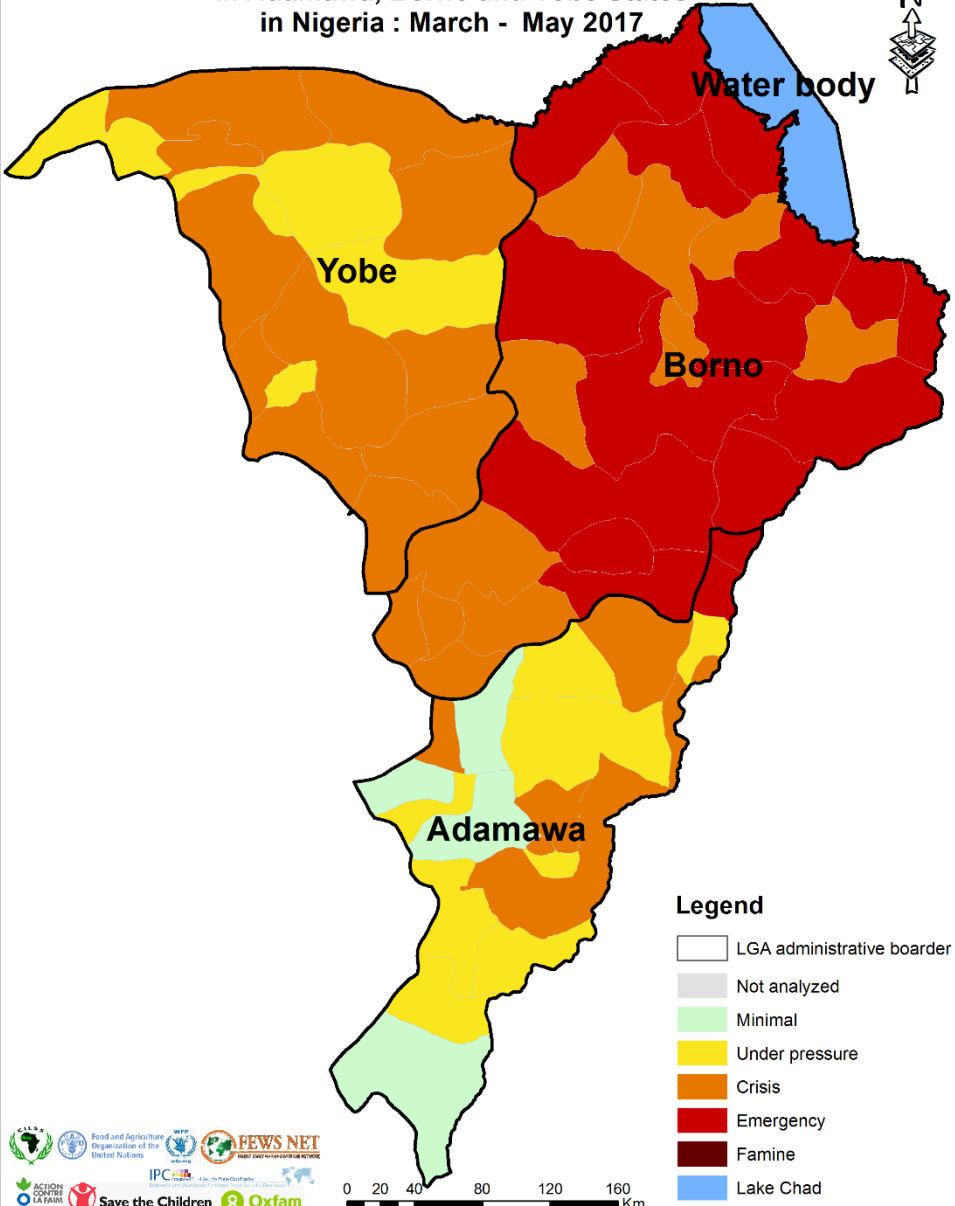


Period	Total population in Phase 3	Total population in Phase 4	Total population in Phase 5	Total population in Phase 3 to 5
March-May 2017	538 405	87 948	-	626 353
June – August 2017	698 509	186 234	3 295	888 038

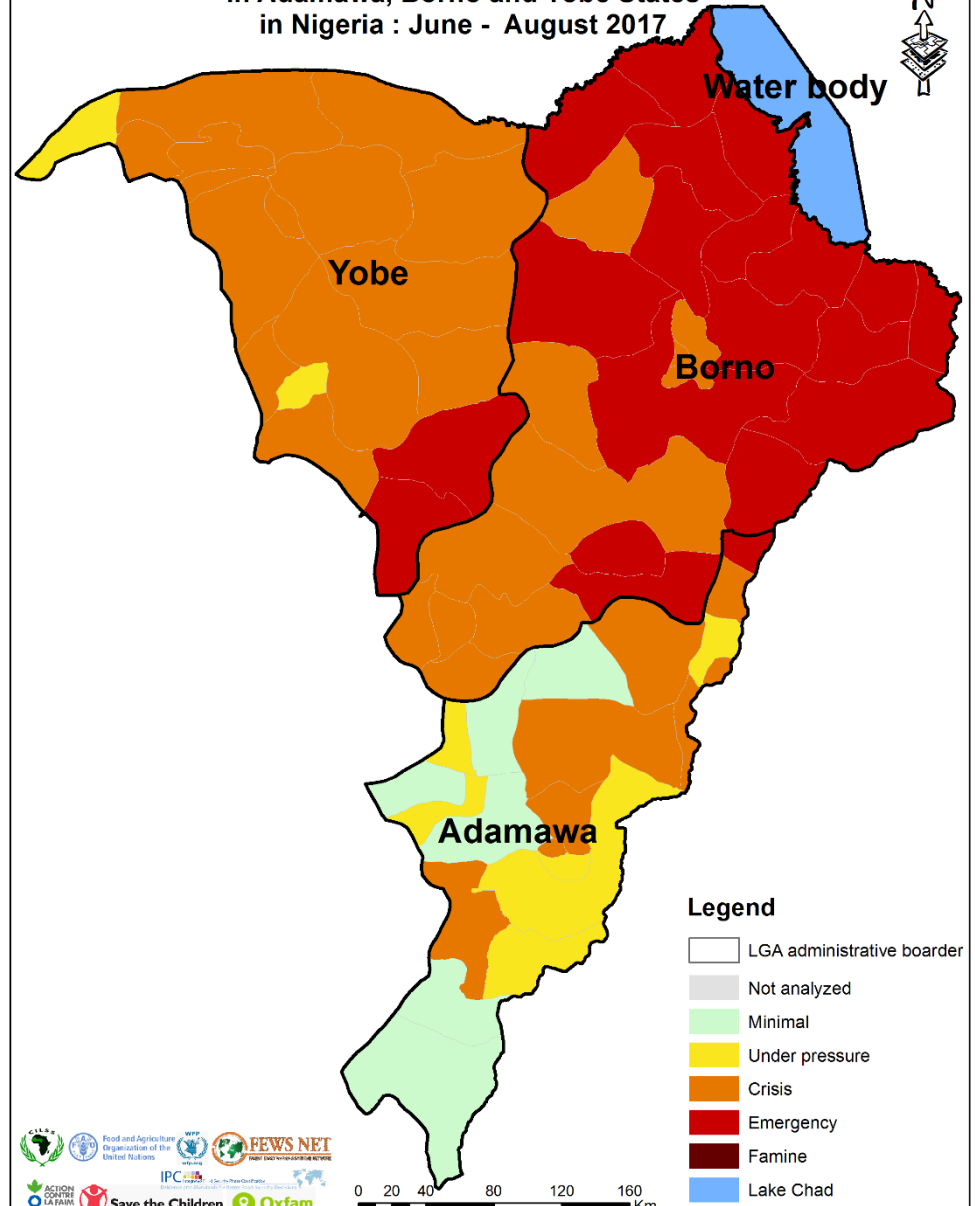
Situation in the 3 northern East States of Nigeria - Adamawa, Borno & Yobe



Cadre Harmonise Analysis
Current Food and Nutrition Insecurity Situation
in Adamawa, Borno and Yobe States
in Nigeria : March - May 2017



Cadre Harmonise Analysis
Projected Food and Nutrition Insecurity Situation
in Adamawa, Borno and Yobe States
in Nigeria : June - August 2017



The 3 States	Total population	CURRENT SITUATION: MARCH TO MAY 2017					
		Total population in Phase 1	Total population in Phase 2	Total population in Phase 3	Total population in Phase 4	Total population in Phase 5	Total population in Phase 3 to 5
ADAMAWA	4 335 341	2 390 020	1 158 938	583 468	197 099	5 815	786 383
BORNO	7 946 371	2 128 187	2 558 752	2 118 059	1 098 842	38 078	3 254 980
YOBE	3 274 833	1 618 062	1 030 419	538 405	87 948	-	626 353
TOTAL	15 556 545	6 136 269	4 748 109	3 239 932	1 383 889	43 893	4 667 716

The 3 States	Total population	PROJECTED SITUATION: JUNE TO AUGUST 2017					
		Total population in Phase 1	Total population in Phase 2	Total population in Phase 3	Total population in Phase 4	Total population in Phase 5	Total population in Phase 3 to 5
ADAMAWA	4 335 341	2 375 863	1 283 500	575 648	91 314	3 690	670 652
BORNO	7 946 371	1 904 193	2 352 042	2 442 029	1 204 541	43 066	3 689 636
YOBE	3 274 833	1 039 119	1 353 517	698 509	186 234	3 295	888 038
TOTAL	15 556 545	5 319 175	4 989 059	3 716 186	1 482 089	50 051	5 248 326

**Current Period
March to May 2017**

	Borno	Adamawa	Yobe
1	Abadam	Demsa	Bade
2	Askira/Uba	Fufore	Bursari
3	Bama	Ganye	Damaturu
4	Bayo	Girie	Fika
5	Biu	Gombi	Fune
6	Chibok	Guyuk	Geidam
7	Damboa	Hong	Gujba
8	Dikwa	Jada	Gulani
9	Gubio	Lamurde	Jakusko
10	Guzamala	Madagali	Karasuwa
11	Kala/Balge	Maiha	Karawa
12	Gwoza	Mayo-Belwa	Machina
13	Hawul	Michika	Nangere
14	Kaga	Mubi North	Nguru
15	Konduga	Mubi South	Potiskum
16	Kukawa	Numan	Tarmua
17	Jere	Shelleng	Yunusari
18	Kwaya Kusar	Song	Yusufari
19	Mafa	Toungo	
20	Magumeri	Yola North	
21	Maiduguri	Yola South	
22	Marte		
23	Mobbar		
24	Monguno		
25	Ngala		
26	Nganzai		
27	Shani		

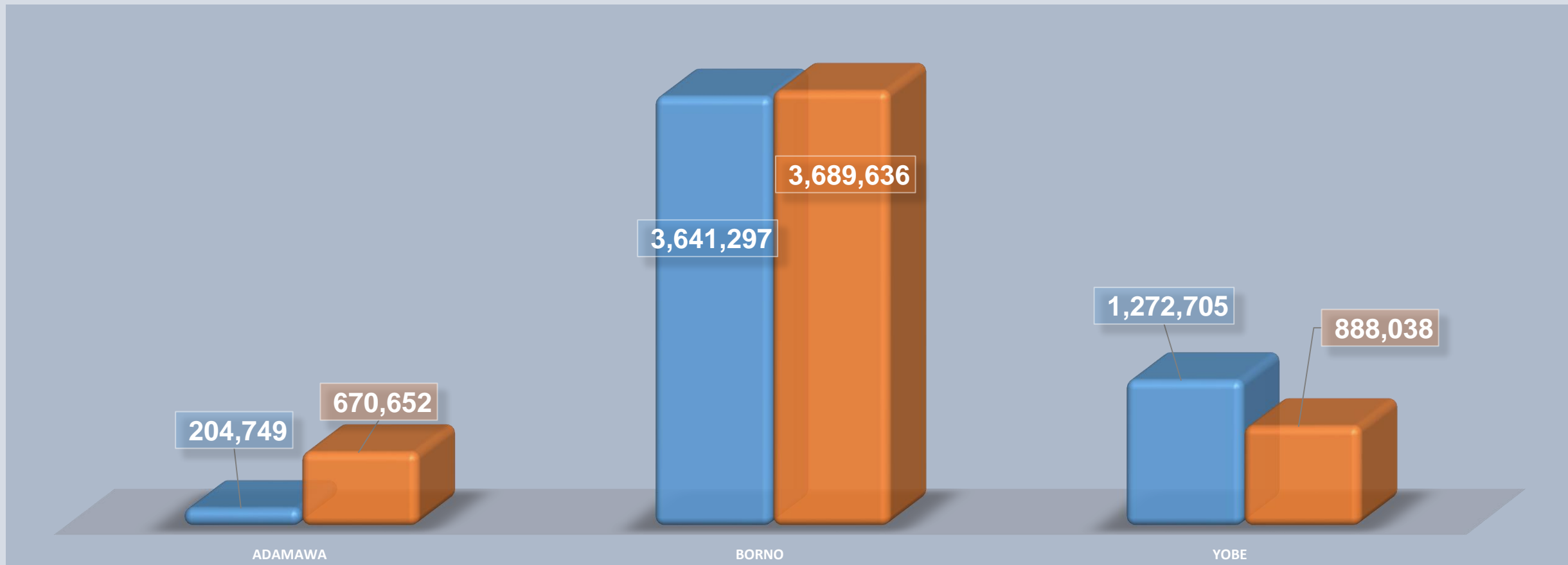
**Projected Period
June to August 2017**

	Borno	Adamawa	Yobe
	Abadam	Demsa	Bade
	Askira/Uba	Fufore	Bursari
	Bama	Ganye	Damaturu
	Bayo	Girie	Fika
	Biu	Gombi	Fune
	Chibok	Guyuk	Geidam
	Damboa	Hong	Gujba
	Dikwa	Jada	Gulani
	Gubio	Lamurde	Jakusko
	Guzamala	Madagali	Karasuwa
	Kala/Balge	Maiha	Karawa
	Gwoza	Mayo-Belwa	Machina
	Hawul	Michika	Nangere
	Kaga	Mubi North	Nguru
	Konduga	Mubi South	Potiskum
	Kukawa	Numan	Tarmua
	Jere	Shelleng	Yunusari
	Kwaya Kusar	Song	Yusufari
	Mafa	Toungo	
	Magumeri	Yola North	
	Maiduguri	Yola South	
	Marte		
	Mobbar		
	Monguno		
	Ngala		
	Nganzai		
	Shani		

Phase 1	
Phase 2	
Phase 3	
Phase 4	
Phase 5	

COMPARISON: CADRE HARMONISE RESULTS OCTOBER 2016 VS. MARCH 2017

■ October 2016 CH ■ March 2017 CH



The 3 States	Phase 3		Phase 4		Phase 5		Phase 3 - 5	
	Oct-16	Mar-17	Oct-16	Mar-17	Oct-16	Mar-17	Oct-16	Mar-17
ADAMAWA	202,904	575,648	1,845	91,314	-	3,690	204,749	670,652
BORNO	2,021,909	2,442,029	1,503,677	1,204,541	115,711	43,066	3,641,297	3,689,636
YOBE	801,458	698,509	465,668	186,234	5,579	3,295	1,272,705	888,038
Total	3,026,271	3,716,186	1,971,190	1,482,089	121,290	50,051	5,118,751	5,248,326

To decision makers and Partners:

- 1. Scale up emergency humanitarian assistance to improve food and nutrition security situation, save lives and protect livelihood conditions.**
- 2. Strengthen the ongoing responses to malnutrition in the sixteen states, particularly in the three north east States before the next lean season.**
- 3. Improve food access for the poorest people especially those living in the remote areas.**

Reliability of Data of CH - Nigeria_March 2007

	Borno		Adamawa		Yobe				
	LGAs	Reliability	LGAs	Reliability	LGAs	Reliability			
	Food Consumption & Evolution of livelihoods	Nutritional status & Mortality	Food Consumption & Evolution of livelihoods	Nutritional status & Mortality	Food Consumption & Evolution of livelihoods	Nutritional status & Mortality			
1	Abadam	R3	R2	Demasa	R2	R2	Bade	R3	R3
2	Askira/Uba	R3	R3	Fufore	R3	R2	Bursari	R3	R3
3	Bama	R2	R2	Ganye	R3	R2	Damaturu	R3	R3
4	Bayo	R3	R3	Girie	R3	R2	Fika	R3	R3
5	Biu	R3	R3	Gombi	R3	R2	Fune	R3	R3
6	Chibok	R3	R3	Guyuk	R3	R2	Geidam	R2	R3
7	Dambo	R2	R2	Hong	R2	R2	Gujba	R3	R3
8	Dikwa	R3	R2	Jada	R3	R2	Gulani	R3	R3
9	Gubio	R3	R2	Lamurde	R2	R2	Jakusko	R3	R3
10	Guzamala	R3	R2	Madagali	R3	R2	Karasuwa	R3	R2
11	Kala/Balge	R3	R2	Maiha	R3	R2	Karawa	R3	R2
12	Gwoza	R2	R2	Mayo-Belwa	R3	R2	Machina	R3	R2
13	Hawul	R2	R3	Michika	R3	R2	Nangere	R3	R3
14	Kaga	R3	R2	Mubi North	R3	R2	Nguru	R2	R2
15	Konduga	R2	R2	Mubi South	R3	R2	Potiskum	R3	R3
16	Kukawa	R3	R2	Numan	R3	R2	Tarmua	R3	R3
17	Jere	R3	R3	Shelleng	R2	R2	Yunusari	R3	R2
18	Kwaya Kusar	R3	R3	Song	R2	R2	Yusufari	R3	R2
19	Mafa	R2	R2	Toungo	R2	R2			
20	Magumeri	R3	R2	Yola North	R3	R2			
21	Maiduguri	R3	R3	Yola South	R3	R2			
22	Marte	R3	R2						
23	Mobbar	R3	R2						
24	Monguno	R3	R2						
25	Ngala	R2	R2						
26	Nganzai	R3	R2						
27	Shani	R3	R3						

Cadre Harmonisé criteria for assessing the reliability score of evidence

Score	Criteria
1. Reliability unconfirmed	Data from experts judgment, source, method, or reasonable temporality but questionable
2. Fairly reliable	Data from validated reports or ancient data from surveys or censuses, deriving from pretty reliable data sources, using a scientific method and, data reflecting the current or projected situation
3. Reliable	Recent data from surveys or censuses recently validated, which the source, method, and the data temporal relevance are indisputable.