

PEOPLE TARGETED – 2023 HRP

4.4 Million People in Need
(Projected Period: June – August 2024 - Population in Phase 3-5)

3 North-East States

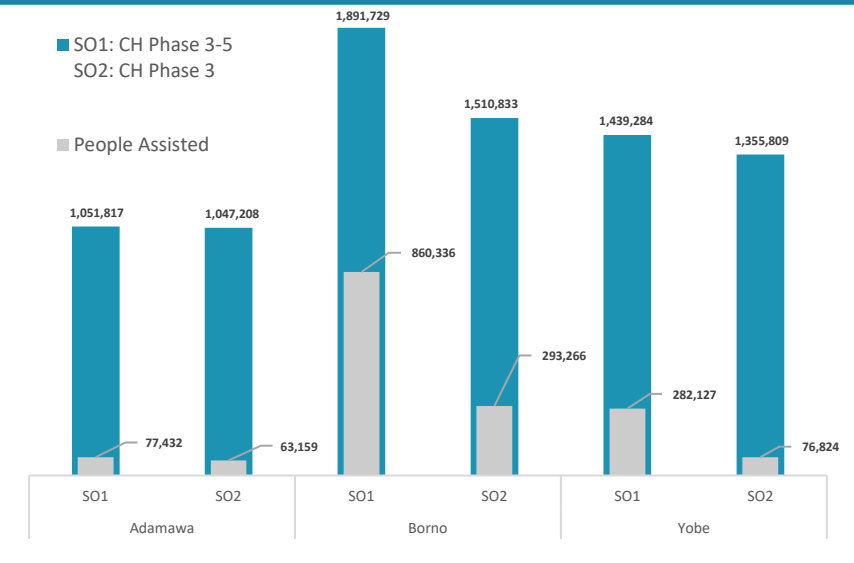
FUNDING REQUIRED – 2023 HRP

470* MILLION

\$339M Unmet
\$333M Resourced

Data Source : FSS Sector through partners

INTERVENTION BY STATE – SO1 & SO2



SAFE ACCESS TO FUEL & ENERGY

supported with fuel efficient stoves, use/production of alternative energy, production of fuel-efficient stoves, and SAFE & protection awareness raising outreach

SAFE
SAFE ACCESS TO FUEL AND ENERGY

Fuel-Efficient Stoves Distribution in Jere in Borno State to 1,500 households

FOOD SECURITY OBJECTIVE 1: Food Assistance

SO1 - Improve the most vulnerable crisis-affected people's access to timely and appropriate food assistance to meet their immediate food needs

2.8 M targeted
Population in Phase 3-5 (October 2023 Cadre Harmonisé for Projected Period: June – August 2024)

28% Target Reached (calculated on a monthly basis)

1.2 M assisted
Number of people assisted under SO1 (In-Kind and Cash/Voucher)

215,557 people assisted with In-Kind

1,004,338 people assisted with Cash/Voucher

22 Number of Partners who reported Food Assistance interventions including implementing partners

FOOD SECURITY OBJECTIVE 2: Emergency Agriculture

SO2 - Strengthen resilience of crisis-affected people by re-establishing, improving and diversifying key agriculture livelihoods

2.2M targeted
Population in Phase 3 (October 2023 Cadre Harmonisé for Projected Period: June – August 2024)

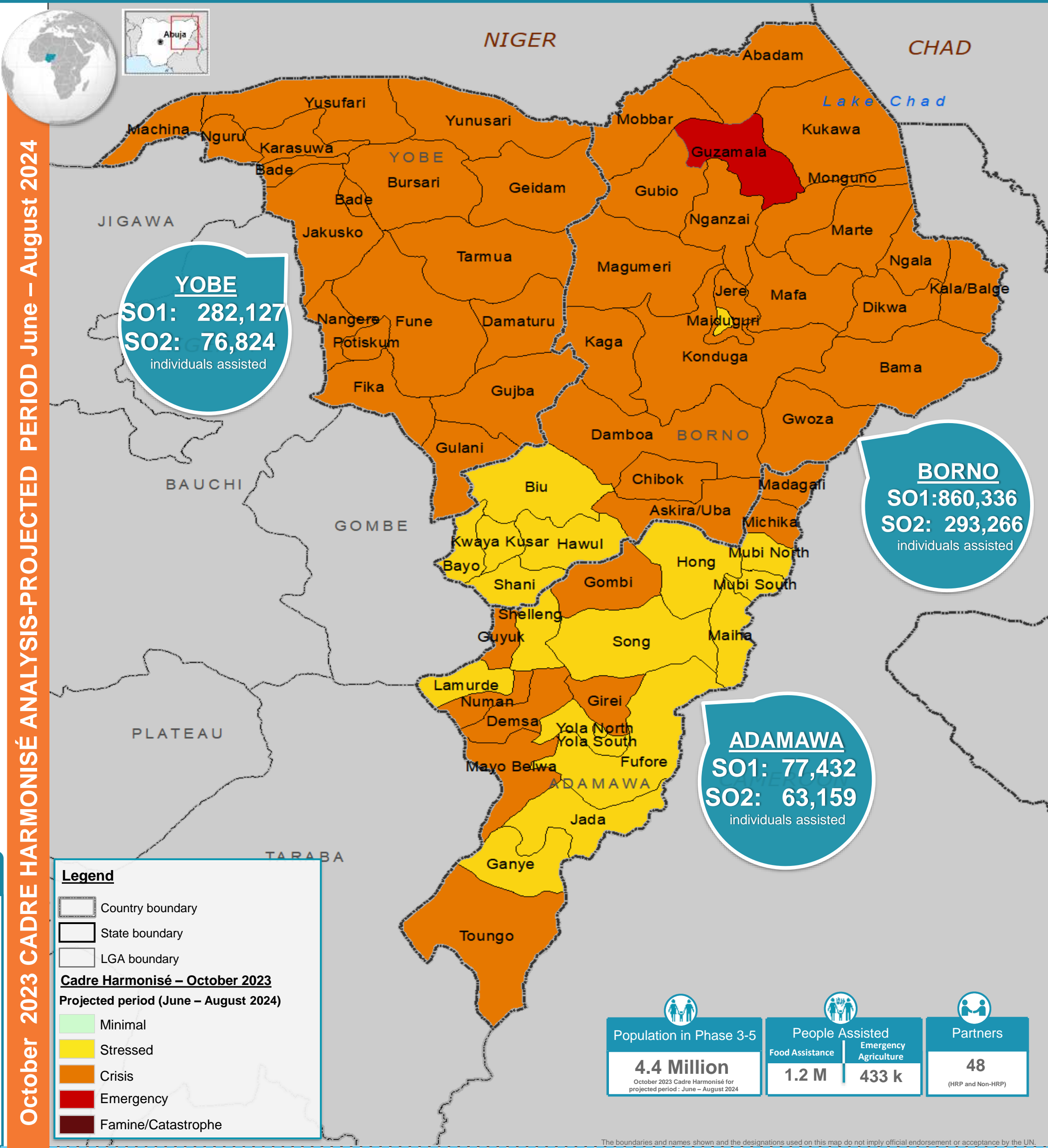
11% Target Reached (calculated on a yearly basis)

433 k assisted
Number of people assisted under SO2 (In-Kind and Cash/Voucher)

253,301 people assisted with In-Kind

179,948 people assisted with Cash/Voucher

39 Number of Partners who reported Agriculture and Livelihoods interventions including implementing partners



October 2023 CADRE HARMONISÉ ANALYSIS-PROJECTED PERIOD June – August 2024

Legend

- Country boundary
- State boundary
- LGA boundary

Cadre Harmonisé – October 2023
Projected period (June – August 2024)

- Minimal
- Stressed
- Crisis
- Emergency
- Famine/Catastrophe

| | | | |
|---|--|---------------------------------------|---|
| Population in Phase 3-5 4.4 Million <small>October 2023 Cadre Harmonisé for projected period: June – August 2024</small> | People Assisted Food Assistance 1.2 M | Emergency Agriculture 433 k | Partners 48 <small>(HRP and Non-HRP)</small> |
|---|--|---------------------------------------|---|