

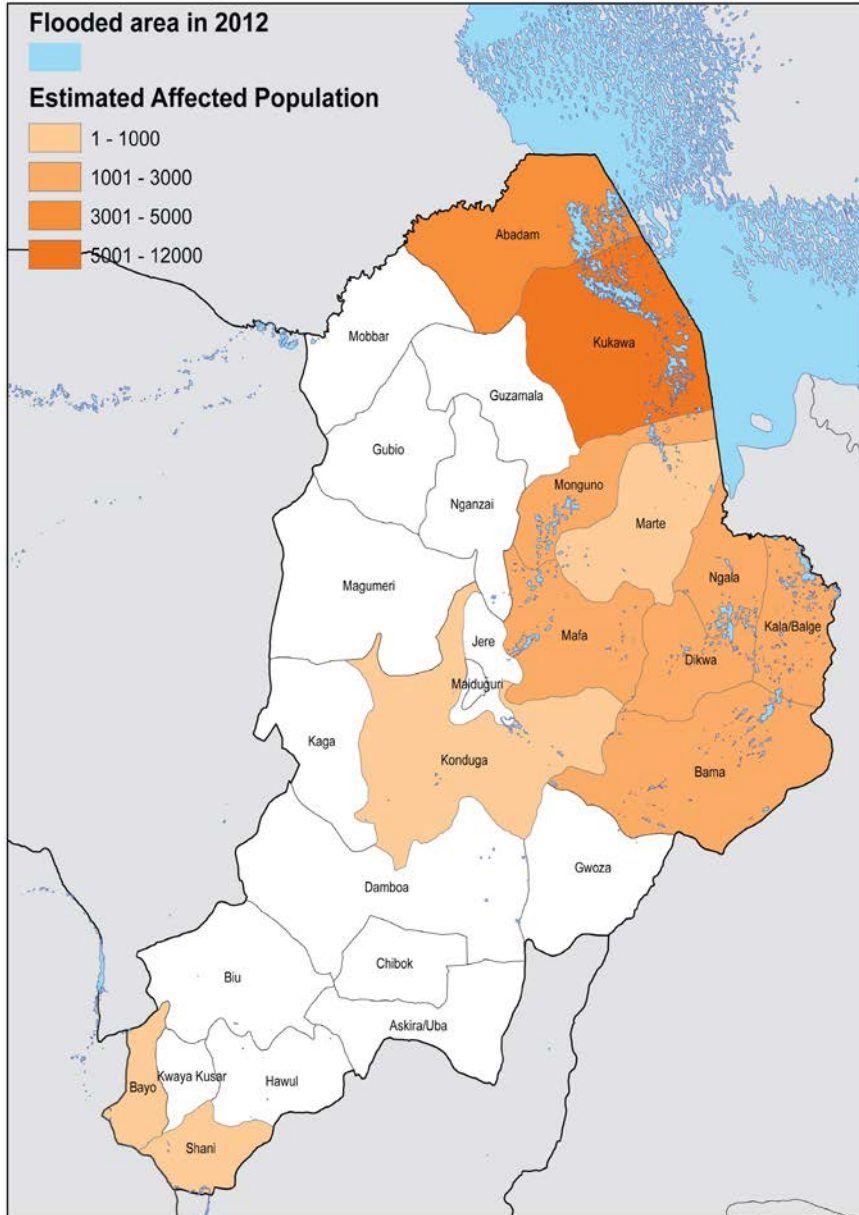


ISWG – Flood Contingency Planning

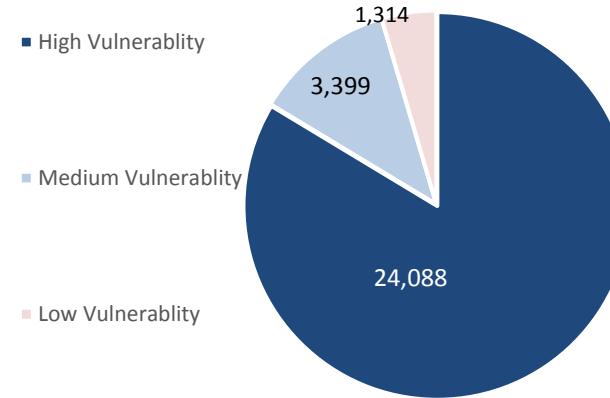
19 March 2018



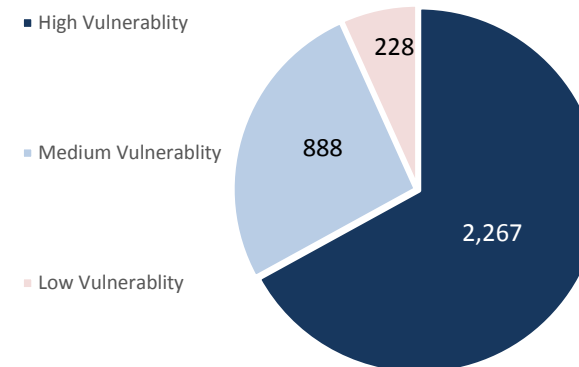
2017 flood contingency plan scenario



Est. number of households living in makeshift shelters in flood-vulnerable camp sites in Borno

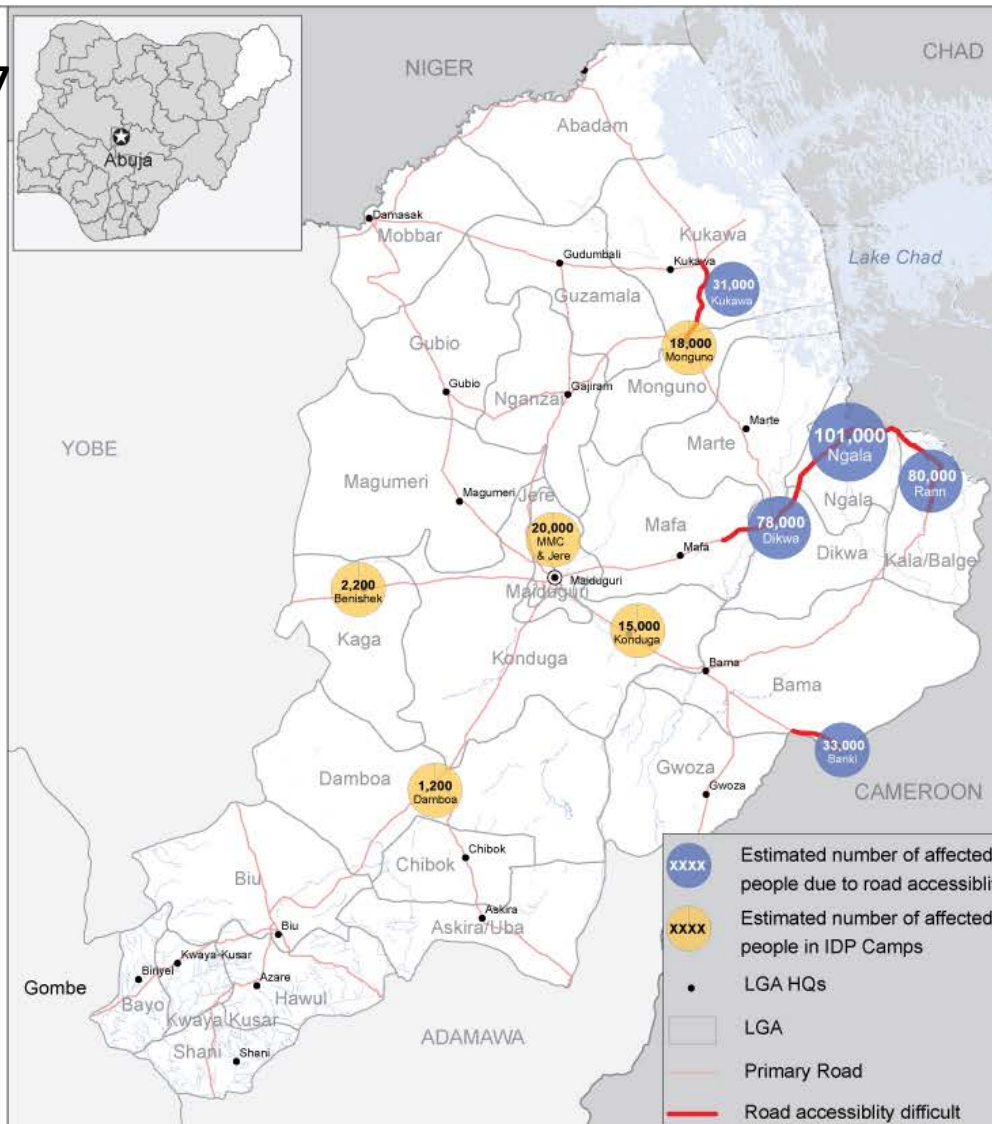


Est. number of households not living in shelters in flood-vulnerable camp sites in Borno



2018 planning based on lessons learned from 2017

- Areas that could not be accessed at all or difficult to access in 2017
- IDP camps that were affected by flood/storm in 2017
- Flood-prone areas based on water flow and elevation (analysis by CCCM)



The boundaries, names shown and the designations used on this map do not imply official endorsement or acceptance by the United Nations. Developed only for humanitarian activities purposes.

2018 flood contingency planning figures

LGA	Town	Population potentially affected by flood	Population Source
Ngala	Nagala	101,516	IDPs +Returnees
Kala/Bage	Rann	80,000	Total poplation
Dikwa	Dikwa	78,909	IDPs +Returnees
Bama	Banki	33,081	IDPs DTM 21 = Total Population
Kukawa	Baga/Kukawa/Cross Kauwa	31,491	IDPs +Returnees
Monguno	Monguno	18,495	CCCM/IOM Camps (20% of IDP pop in camp)
Konduga	Konduga	15,003	CCCM/IOM Camps (20% of IDP pop in camp)
Jere	Jere	10,539	CCCM/IOM Camps (20% of IDP pop in camp)
Maiduguri	Maiduguri	9,961	CCCM/IOM Camps (20% of IDP pop in camp)
Kaga	Benishek	2,207	CCCM/IOM Camps (20% of IDP pop in camp)
Damboa	Damboa	1,279	CCCM/IOM Camps (20% of IDP pop in camp)
Magumeri	Gajigana	614	CCCM/IOM Camps (20% of IDP pop in camp)
Gwoza	Gwoza	588	CCCM/IOM Camps (20% of IDP pop in camp)

Total: 383,683

End

